



United States
Environmental Protection
Agency

Region 10

Construction Update

Wyckoff/Eagle Harbor Superfund Site

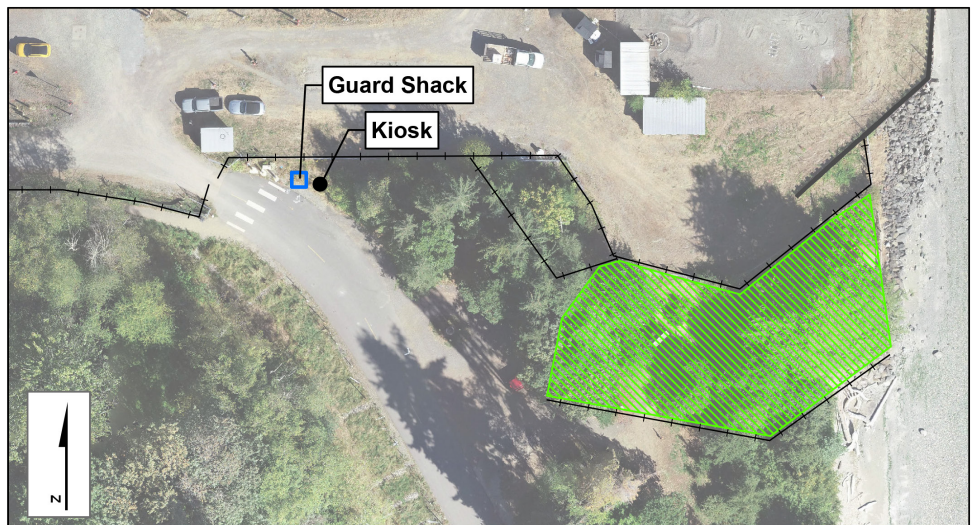
August 2024

Construction activities are ramping up at the Wyckoff/Eagle Harbor Superfund Site.

EPA is starting the wellfield replacement project and active construction will begin in August. Safety fencing will be put up with a 50-foot buffer around the southeast corner of the site to protect the public (shown as green hash marks on figure below). The fencing will remain in place throughout the wellfield replacement project, which is anticipated to last through the end of 2024. During this time, the public will not be able to access the southeast corner area, including the Creosote Park Bench. EPA will reassess public access to the park and Creosote Place NE during future phases of construction in late 2024 or early 2025.

EPA is installing two informational kiosks onsite to display fact sheets and other information from EPA about the project. The first kiosk was installed at the entrance to the fenced area and the second kiosk will be near the entrance to the site on Eagle Harbor Drive. EPA has installed a guard shack at the entrance to the fenced area to support construction traffic management and site security.

As a reminder, construction traffic and support vehicles require unabated access along Creosote Place NE. Parking along the shoulder of the road is prohibited and unauthorized parking may result in warnings, tickets, and/or being towed. Unauthorized parking along the shoulder of Creosote Place NE may result in the closure of this road access. Parking is still allowed in the parking lot at the base of Creosote Place NE and additional parking and access to the beach is available at the Pritchard Park Parking Area, on the west side of the park, adjacent to the Bainbridge Island Japanese American Exclusion Memorial.



Aerial photo of SE corner of Wyckoff site showing the guard shack and kiosk locations, and area that will not be accessible to the public (by Jacobs Engineering).

For more information, contact:

Bernadette Wright

Remedial Project Manager
wright.bernadette@epa.gov
office: (206) 553-1834
mobile: (206) 771-3106

Debra Sherbina

Community Involvement Coordinator
sherbina.debra@epa.gov
office: (206) 553-0247
mobile: (206) 858-1892



Visit the Wyckoff/Eagle Harbor website: www.epa.gov/superfund/wyckoff-eagle-harbor