

# River Mile 11 East Project

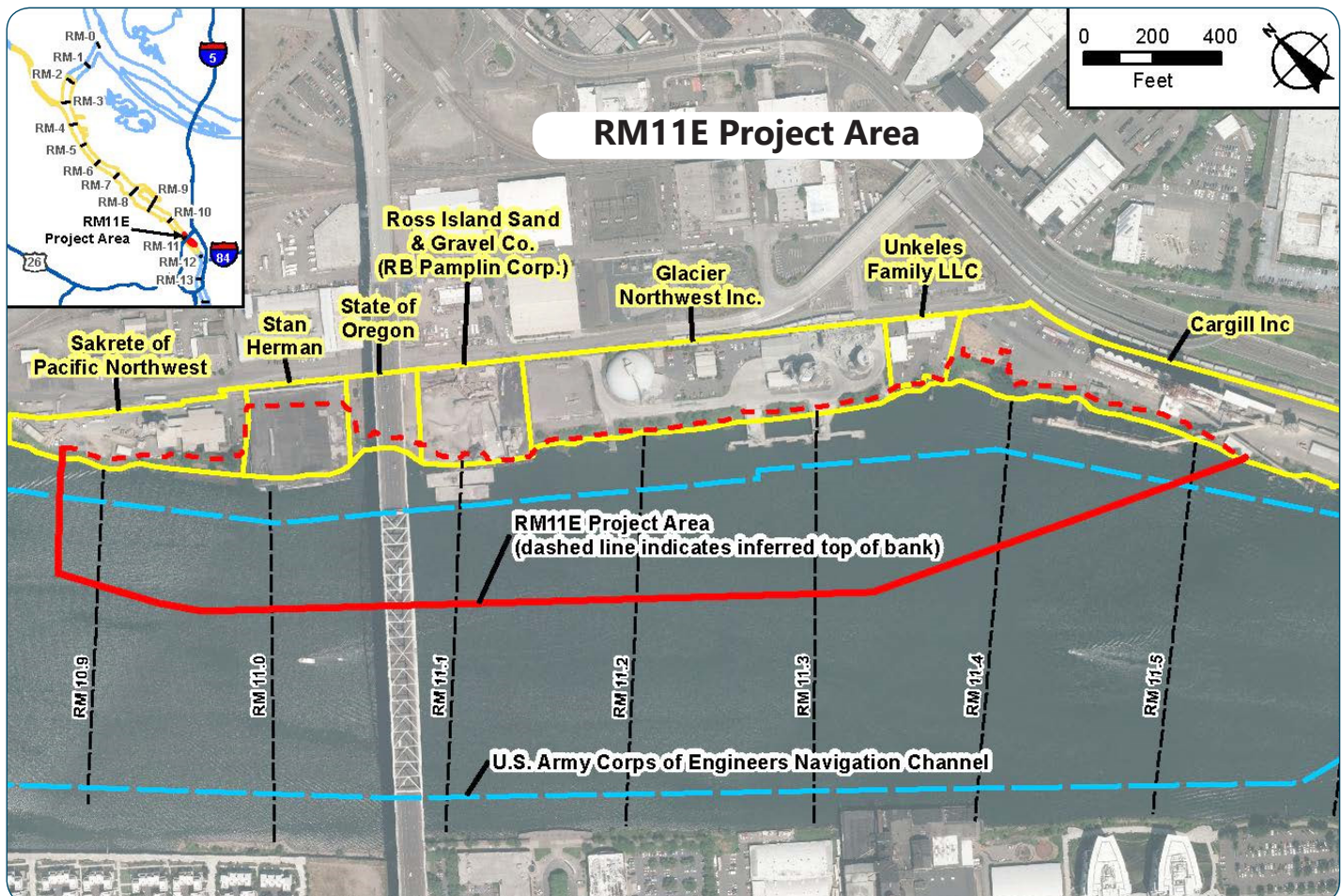
Portland Harbor Superfund Site

June 2019

The U.S. Environmental Protection Agency (EPA) and the River Mile 11 East (RM11E) Group have prepared this fact sheet to provide community members with updated information concerning the RM11E project area which is part of the Portland Harbor Superfund Site (see figure below). The site-wide Portland Harbor Remedial Investigation indicates that there is potential for long-term health risks from eating fish taken from the RM11E project area. EPA issued the Record of Decision (ROD) for the Portland Harbor in January 2017. The ROD requires cleanup in the RM11E area.

## Project Area Description

The RM11E project area is located along the east bank of the Willamette River between approximately RM 10.9 and RM 11.6, just south of the Fremont Bridge, and includes approximately 38 acres of river bottom and shoreline. RM11E is within the historic Albina area, which has hosted a wide variety of industrial facilities and overwater operations, in addition to many ongoing industrial and marine operations, for more than 100 years. The Willamette River in this area has been redirected, straightened, filled, and deepened during the last century to make it usable for navigation and commercial shipping. Artificial fill has been added to much of the project area over the years.



Source: RM11E Group

## River Mile 11E Group

The River Mile 11E Group is a small group of parties who either have in the past or currently own property and/or have business operations in the vicinity of the RM11E project area. These six parties have stepped forward to work with EPA and its partners to perform additional work that advances the cleanup.

Members of the RM11E Group include:

- Cargill, Inc.
- CBS Corporation
- City of Portland
- DIL Trust
- Glacier Northwest, Inc.
- PacifiCorp

An Administrative Settlement and Order on Consent (ASOC or AOC) between EPA and the RM11E Group was finalized on April 15, 2013. The AOC required the RM11E Group to pay for and conduct investigation activities specific to RM11E that supplemented the larger Portland Harbor Remedial Investigation/Feasibility Study. The additional work performed at RM11E over the past several years allows design and construction of the final remedy for the RM11E project area to begin more quickly than at other areas within the Portland Harbor Superfund Site. An AOC Amendment was signed with EPA in January 2018, in which the group committed to perform the engineering studies and do the work needed to design the full remedy for the RM11E project area.

Information regarding work performed at the Portland Harbor Superfund Site, including RM11E, is available at EPA's website: [www.epa.gov/superfund/portland-harbor](http://www.epa.gov/superfund/portland-harbor)

## River Mile 11E Work Completed to Date

The RM11E Group has collected and evaluated data to better understand the implementability considerations of a remedy, as well as the potential for recontamination after the active remedy for the RM11E project area is completed. While the ROD provides a general outline for how the Portland Harbor Superfund Site will be cleaned up, additional details specific to many of the smaller areas within the site, such as RM11E, need to be refined to ensure the overall remedy is successful. The implementability study for the RM11E project area looked at how the unique physical site features, river dynamics, existing structures and ongoing business operations in this area may impact and be impacted by the remedy. The recontamination assessment, which was finalized and approved by EPA in November 2018, evaluates whether potential sources of contamination, such as chemicals in industrial discharges, upland groundwater, stormwater and riverbank erosion, have been adequately controlled to prevent future recontamination.

The RM11E Group is now working on designing the remedy. In February 2019, the RM 11E submitted a Basis of Design Report to EPA, which is the next step in the remediation process.

## Questions?

**Cindy Ryals**

503-823-5830



[cindy.ryals@portlandoregon.gov](mailto:cindy.ryals@portlandoregon.gov)

**Laura Knudsen**

206-553-1838

[knudsen.laura@epa.gov](mailto:knudsen.laura@epa.gov)

*If you need materials in an alternative format, please contact Laura Knudsen at 800-424-4372, ext. 1838*

*TTY users: please call the Federal Relay Service: 800-877-8339 and ask for Laura Knudsen*