



EPA Community Information Webinar

Proposed Explanation of Significant Differences (ESD)

Portland Harbor Superfund Site

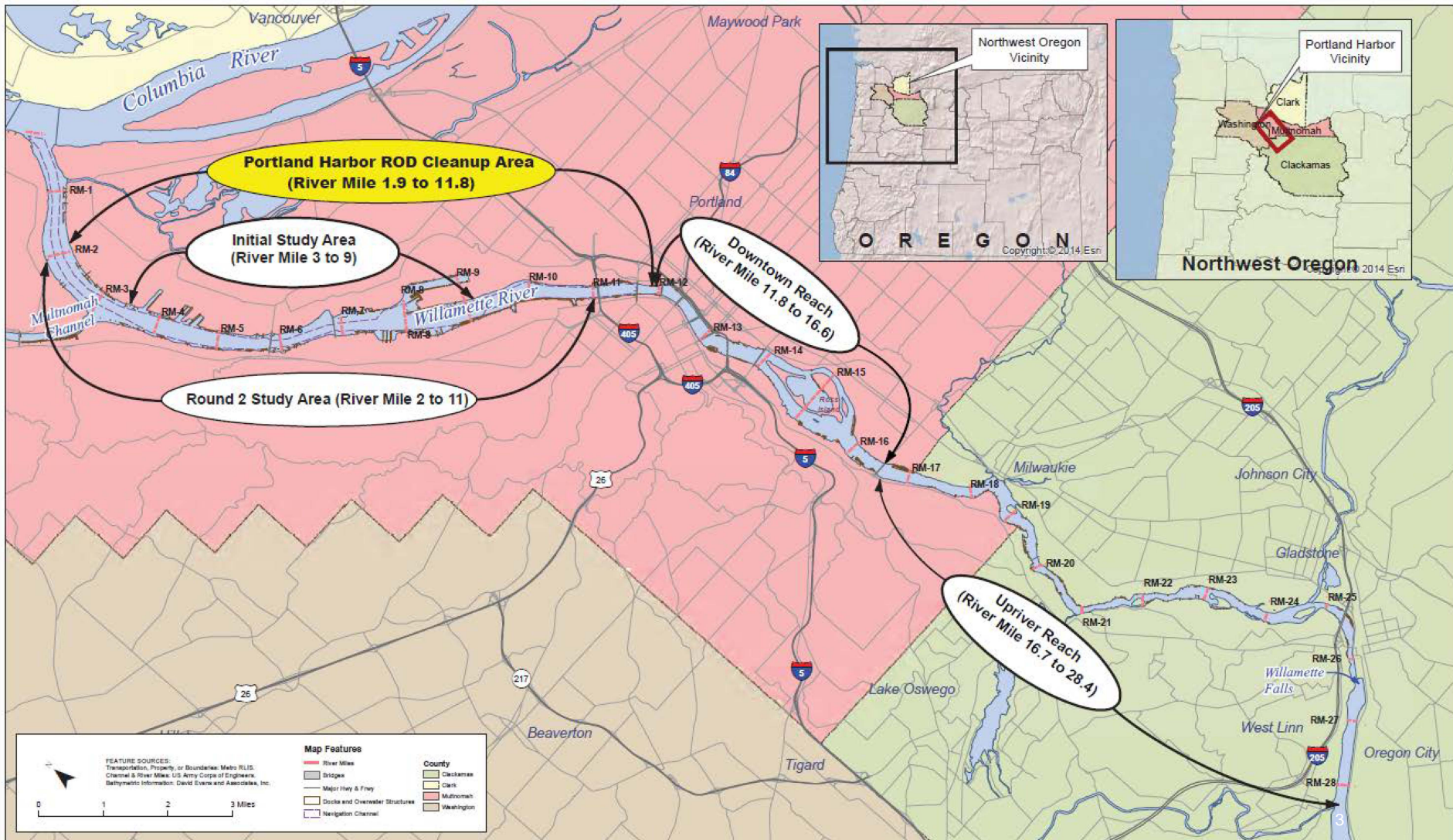


Sean Sheldrake and Laura Knudsen, U.S. EPA Region 10

November 1st, 2018 • 6–7:30pm

- **Site background**
- **Why is there a proposed ESD (Explanation of Significant Differences)?**
- **What does this change mean for the Portland Harbor Superfund Site?**
- **Question and answer session**

Site Background



Site Background

These Focused COCs are:

- The most widespread
- Have the most associated risk
- Address other COCs

- **Focused Contaminants of Concern**

- **Polychlorinated Biphenyl (PCBs)**

- ☆ **Where Do They Come From?** Used in electrical equipment, oil, plastics

- **Polycyclic Aromatic Hydrocarbons (PAHs)**

- ☆ **Where Do They Come From?** Produced when coal, oil, and gas are burned, spilled, etc....

- ☆ **Benzo(a)pyrene (BaP) is a PAH.** BaP cancer risk is used to assess cancer risk for other carcinogenic PAHs

- **DDx (DDT, DDE, DDD)**

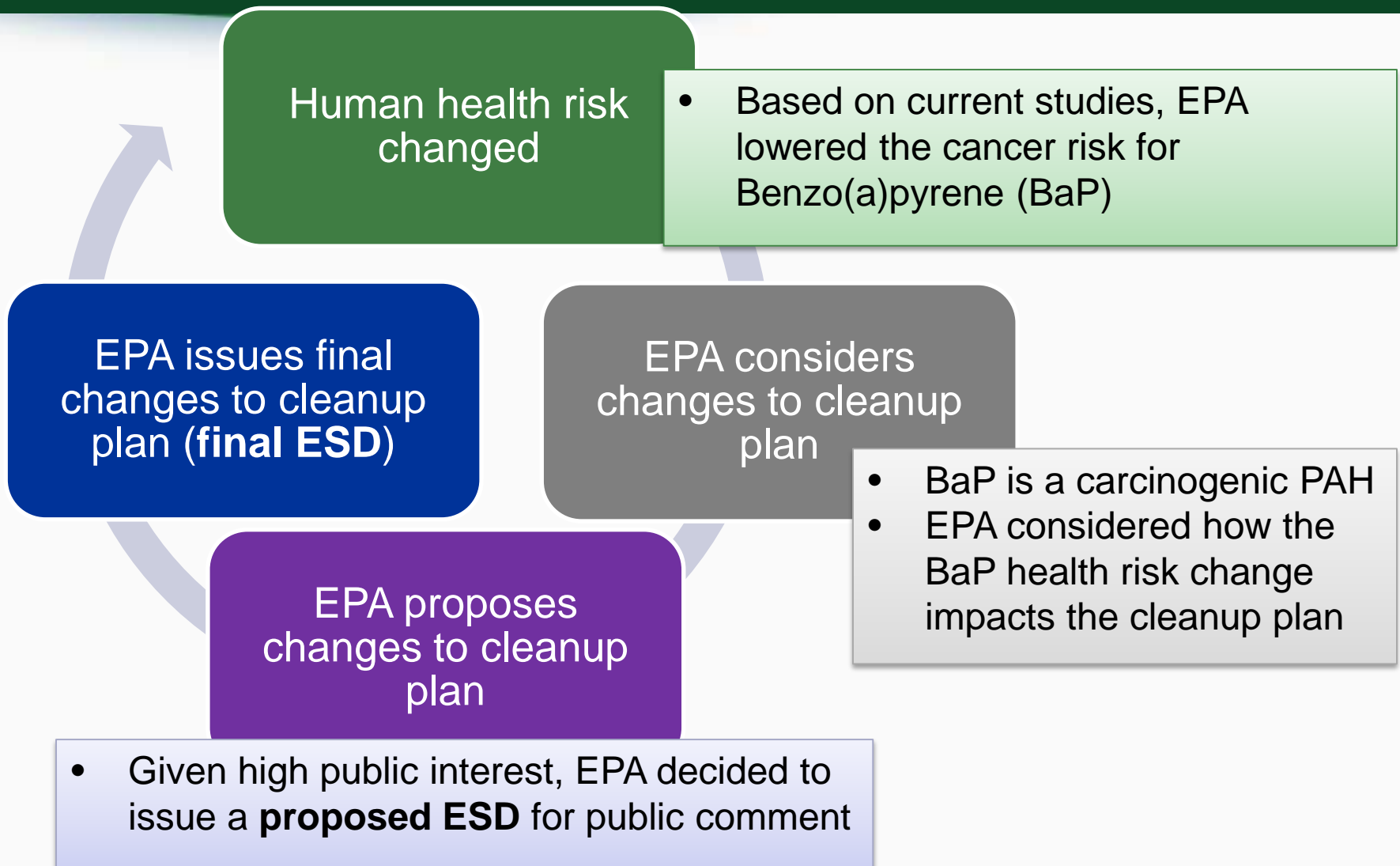
- ☆ **Where Do They Come From?** Commonly used in pesticides

- **Dioxins/Furans**

- ☆ **Where Do They Come From?** Created when certain products are made, like herbicides, pulp/paper, or when products are burned.

Why is there a proposed Explanation of Significant Differences?

Proposed ESD (Explanation of Significant Differences?): What is it and why?



Why did the Benzo(a)pyrene health risk change?



- EPA's Integrated Risk Information System (IRIS) updated their BaP assessment in 2017
- EPA's IRIS program has worked for over 10 years on this assessment
- The BaP IRIS assessment was extensively reviewed with many agencies and scientists (next slide)
- Current studies show that cancer risk for BaP is about seven times less toxic for people who contact or ingest the chemical

What is the EPA IRIS Program?

- **Created in 1985** to provide a database of human health assessments for chemicals
- **Goal:** Foster consistency in the evaluation of chemical toxicity across EPA

Who reviewed this BaP cancer health risk change?



- **Some of the other Agencies who reviewed:**
 - Agency for Toxic Substances and Disease Registry
 - Department of Defense
 - National Aeronautics and Space Administration (NASA)
 - National Institute for Occupational Safety and Health
- **Public comments:** Assessment released for public comment in 2013
- **Peer review by 27 independent, expert scientists including:**
 - University of Washington, Seattle WA
 - University of California, Irvine CA
 - University of New Mexico, Albuquerque NM
 - Harvard School of Public Health, Boston MA
 - The University of Texas at Austin, Austin TX
 - University of Illinois, Chicago IL
 - National Institute of Health, Bethesda MD
 - Department of Statistics and Evaluation, American Cancer Society, Atlanta GA



What does this BaP change
mean for the Portland Harbor
Superfund Site?

What are PRGs, PTW and RALs?



- **Cleanup Levels:** Long-term contaminant concentrations that the cleanup must achieve to meet the Remedial Action Objectives. These also may be referred to as Preliminary Remediation Goals (PRGs).
 - Developed for all contaminants of concern on a media-specific (sediment, water, clam tissue, etc...) basis
- **Highly Toxic Principal Threat Waste (PTW):** Contaminant source material that requires special management due to high toxicity
- **Remedial Action Levels (RALs):** Define areas where capping and/or dredging must be conducted to facilitate natural recovery throughout the site
 - Separate RALs established in Portland Harbor for Navigation Channel and nearshore sediments

What does this mean for the Portland Harbor Superfund Site?



★ = Affected by change

RAO		Media
H u m a n	RAO 1	Sediment ★
	RAO 2	Biota ★
	RAO 3	Surface Water
	RAO 4	Groundwater
E c o	RAO 5	Sediment
	RAO 6	Biota
	RAO 7	Surface Water
	RAO 8	Groundwater
H&E	RAO 9	Riverbanks

Remedial Action Objectives (RAOs)

- **RAOs:** Media specific goals for protecting human health and the environment
- Cleanup plan established RAOs and cleanup levels for sediment, groundwater, surface water, and river bank soils
- Any change in remedial action levels must consider impact on all RAOs

What does this mean for the Portland Harbor Superfund Site?



“BIG PICTURE”

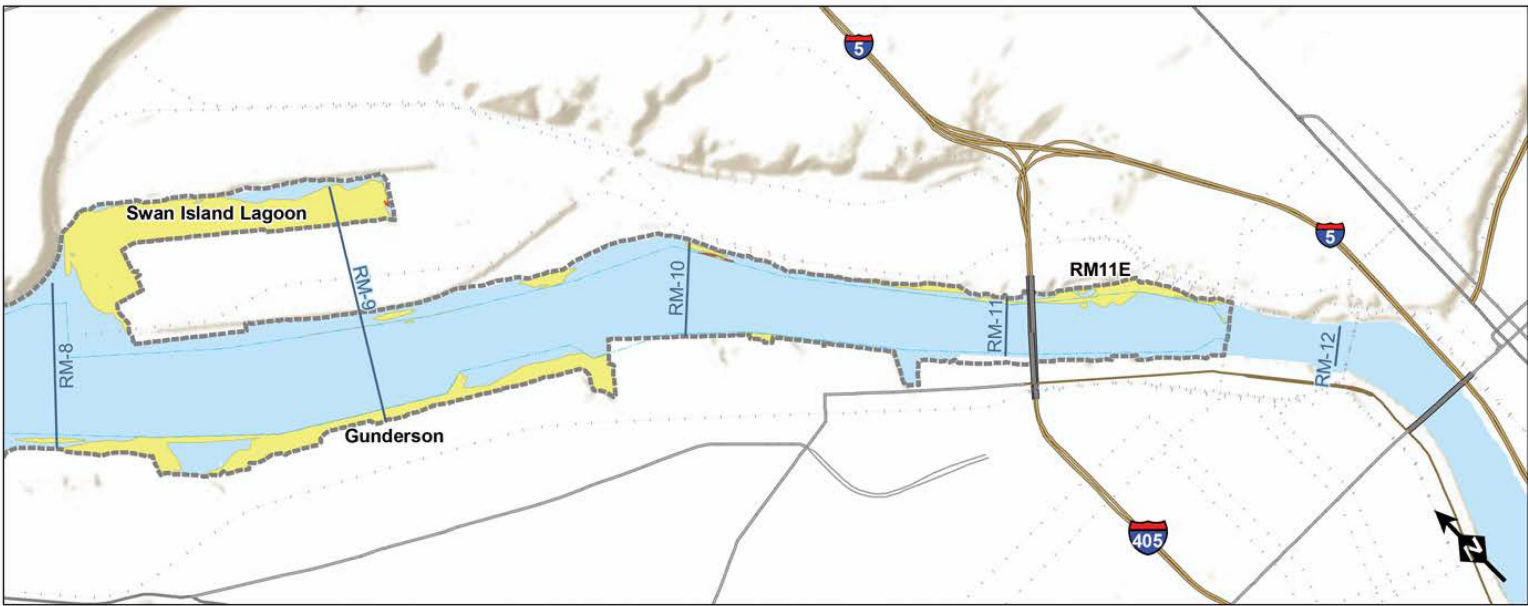
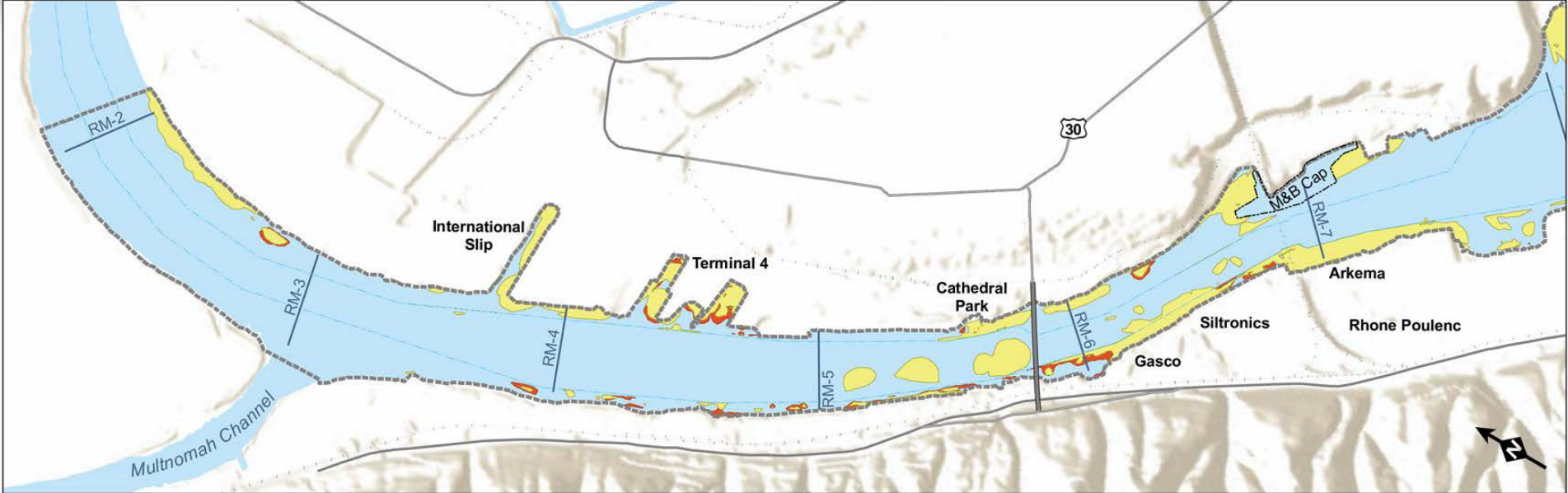
	Total Remedial Area (Acres)	Cost
ROD	~364	~\$1.05 billion
Proposed ESD	~347	~\$1.015 billion
Change <i>From ROD to Proposed ESD</i>	~17 <i>4.67% decrease</i>	~\$35 million <i>3.33% decrease</i>

What does this mean for the Portland Harbor Superfund Site?



Scenario	Impacted Area	ROD Value	Updated Value
Direct Contact cPAH Beach Sediment cleanup level	Beach Areas	12 µg/kg (parts per billion)	85 µg/kg
Direct Contact cPAH In-Water Sediment cleanup level	Nearshore sediment (excluding beach areas)	Not Included (106 µg/kg)	774 µg/kg
Clam Tissue Consumption cPAH Target Level	Site-Wide	7.1 µg/kg	51.6 µg/kg
Clam Consumption cPAH Sediment cleanup level	Site-Wide	3,950 µg/kg <i>(This should have been 39.5 µg/kg)</i>	1,076 µg/kg
Benthic Risk total PAH Sediment cleanup level	Site-Wide	23,000 µg/kg	23,000 µg/kg <i>No Change Proposed</i>
Highly Toxic cPAH PTW Threshold	Site-Wide	106,000 µg/kg	774,000 µg/kg
Nearshore total PAH RAL	Nearshore Sediment (Outside the Navigation Channel)	13,000 µg/kg	30,000 µg/kg
Navigation Channel total PAH RAL	Navigation Channel Sediment	170,000 µg/kg	170,000 µg/kg <i>No Change Proposed</i>

What does this mean for the Portland Harbor Superfund Site?



Legend

- Proposed (New) Remedial Area in ESD
- Remedial Area Change (Reduction) from ROD
- Navigation Channel
- Site Area

0 1,000 2,000 3,000 4,000
Feet



Source Credits: Sources: Esri, HERE, Garmin, Intermap, increment P Corp., GEBCO, USGS, FAO, NPS, NRCAN, GeoBase, IGN, Kadaster NL, Ordnance Survey, Esri Japan, METI, Esri China (Hong Kong), swisstopo, © OpenStreetMap

How can I be involved?



- **Provide written comments to EPA on the proposed ESD until Friday, December 21st:**
 - Send comments via **e-mail** to HarborComments@epa.gov
 - **Mail Comments:** Attn: Portland Harbor Superfund Comments, U.S. Environmental Protection Agency, 805 SW Broadway, Suite 500, Portland OR 97205
- **Review the webinar recording of the proposed ESD presentation on EPA's website:** www.epa.gov/superfund/portland-harbor
- **Attend an in-person proposed ESD community information session**
 - **Day & Time:** Tuesday, November 20, 6-8:30pm
 - **Location:** Ecotrust Building, 721 NW 9th Ave, Portland OR 97209
- **Attend EPA's December 12th public forum**

More Questions?



- **Sean Sheldrake**, EPA Remedial Project Manager
 - **E-mail:** sheldrake.sean@epa.gov
 - **Phone:** 206-553-1220
- **Laura Knudsen**, EPA Community Involvement Coordinator
 - **Email:** knudsen.laura@epa.gov
 - **Phone:** 206-553-1838