



**UNITED STATES ENVIRONMENTAL PROTECTION AGENCY  
REGION 10**

1200 Sixth Avenue, Suite 900  
Seattle, WA 98101-3140

**OFFICE OF  
ENVIRONMENTAL  
CLEANUP**

**MEMORANDUM**

**SUBJECT: Errata for 2010 and 2015 Five-Year Reviews (FYR) for Ketchikan Pulp Company (KPC) Site, Ketchikan, AK**

**DATE: August 8, 2016**

**FROM: Karen Keeley, RPM**

**TO: KPC Site File/Link Document to FYR**

In the 2010 and 2015 FYRs for the KPC Superfund Site, Figure 2 (shown below) incorrectly shows the boundary of the Marine Operable Unit (OU). The blue-dashed line does not show the boundaries of the Marine OU; instead, the blue-dashed line shows the boundary of the Area of Concern (AOC).

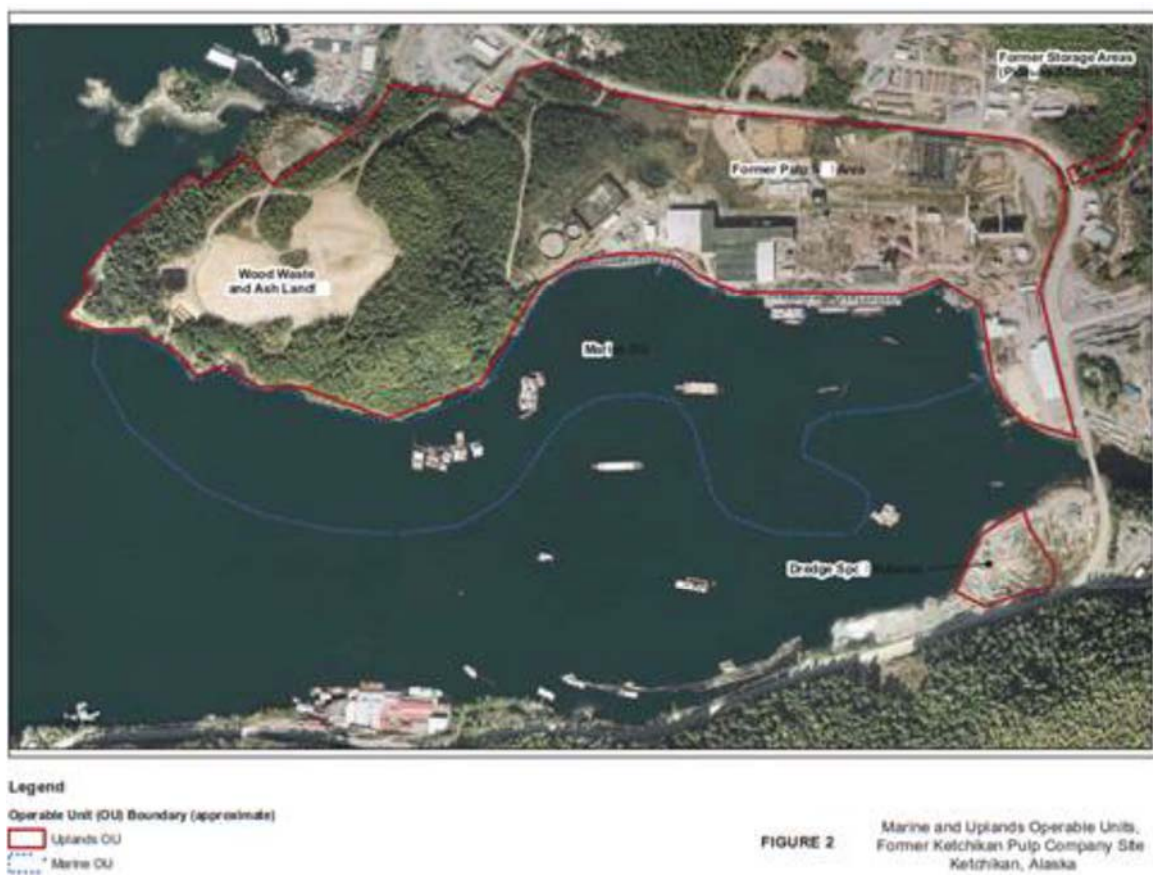


Figure 2 of the FYRs should show the boundary of the Marine OU as shown below in red:

