

BASIN BULLETIN



Updates on the Coeur d'Alene River Basin Cleanup

July 2016

Lower Burke Canyon Repository Waste Management: EPA Responds to Community Input

After carefully considering community input, the U.S. Environmental Protection Agency has decided to allow some additional project waste to be brought to the Lower Burke Canyon Repository. Doing so will reduce transportation costs and improve overall project efficiency for specific projects in the Upper Basin. At the same time, the agency believes it can make changes to its operations to help address public concerns and limit the impact on local residences.



Photo: Maureen Gilbert

The EPA estimates that this change will result in about 10 more trucks each day using the repository. This number is in addition to the trucks already using the repository as part of regular operations. Regular operations are already in full swing this construction season. Two ICP projects have been sending waste to LBCR as planned under the original scope of the repository. One is the sewer project in Wallace. The other is an AT&T fiber optic line installation in Mullan. Up to 60 truckloads a day have recently come from these two projects

The EPA's responses to issues and questions raised by community members can be found at <http://go.usa.gov/xx97d>. Community members provided public input from March 31 to May 13, 2016. The EPA also hosted an Open House in Wallace on April 27. The EPA takes community input very seriously. This informal comment period is part of our commitment to give full consideration to the needs and concerns of the community.

Even though our process does not require it, we want to hear from people to find ways to make the repository less of a burden. We understand that the repository operation and other cleanup activities impact local people, sometimes in negative ways.

We are committed to finding ways to address concerns, whenever possible, while we work to protect people's health and the environment for the long term. The agency also has a responsibility to spend resources wisely and run an efficient cleanup.

CONTACT: **Bill Adams**
EPA Project Manager
206-553-2806
• 800-424-4372 ext. 2806.
Email adams.bill@epa.gov.

Parents: Protect Your Child's Health Free Blood Lead Screening July 25-30

The Panhandle Health District will offer free blood lead testing July 25–30. Children under 18 and pregnant women living in the area can be tested. Families will receive a \$30 incentive for children between 6 months and 6 years old getting tested. Testing will occur at Shoshone Medical Center, 25 Jacobs Gulch Road, Kellogg. **Why test?** Lead can cause health problems, especially for young children and pregnant women. Soils contaminated with heavy metals are being cleaned up, but people can still come into contact with lead. Testing is free, easy, and fast.

CONTACT: Panhandle Health District, 208-783-0707



Central Treatment Plant Upgrades: Contract Awarded



Photo: Maureen Gilbert

The U.S. Army Corps of Engineers has awarded a contract to upgrade and expand the Central Treatment Plant near Kellogg, Idaho. The work is part of the EPA's efforts to clean up contamination in the basin. AMEC Foster Wheeler Environmental & Infrastructure, Inc., was awarded a \$48 million design-build contract.

The contract is currently stayed, however, while a protest from another bidder is considered. The contract includes installation of a groundwater collection system along the Central Impoundment Area and upgrades to the Central Treatment Plant.

"When finished, the groundwater collection system and upgraded treatment plant will reduce the single highest source of dissolved zinc pollution to the South Fork of the Coeur d'Alene River by up to 90 percent," said Sheryl Bilbrey, director of EPA's Superfund cleanup office in Seattle. "For Silver Valley communities, the local jobs and project-related spending will be enjoyed over the life of the project."

The project is expected to take about four years. During construction, the public access trail that skirts the northern edge of the Slag Pile Area and Central Impoundment Area will be closed. Also, increased traffic on nearby streets is expected.

CONTACTS: **Ed Moreen**, EPA Project Manager • 208-664-4588 • moreen.ed@epa.gov
Kim Prestbo, EPA Project Manager • 206-553-0239 • 800-424-4372 ext. 0239 • prestbo.kim@epa.gov.

Local Landowners: Have Property Soils Tested Now — Before Program Downsizes

Landowners: Have your property tested for soil contamination before the Basin Property Remediation Program is downsized. If you wait, you may face significant delays.

Sampling and any cleanup is done at no cost to you. The program will be fully staffed only through 2018. The EPA is setting aside a limited budget each year for this program due to the decreasing number of eligible properties. Priority will be given to properties where pregnant women or young children live.



After receiving consent, the Coeur d'Alene Trust, working on behalf of the EPA, will contact you to develop a sampling plan. Once results are in, you will receive a copy. Results may show that no cleanup action is needed. If remediation is needed, a representative will explain the process with you.

Remediation often enhances a property's appearance and will reduce exposure to heavy metals. Sampling or remediation documents may assist you with future real estate transactions. Without these records, loans, sale, or transfer of title may be delayed. Most importantly, completing this work helps protect the health of your family and your community.

CONTACT: Call the **IDEQ Kellogg** office at 208-783-5781 to discuss eligibility, request consent forms, and get program information.

Fishing for Health

Sometimes, a day fishing on the water isn't just for food or fun. Field crews from the Coeur d'Alene Tribe, Idaho Department of Fish and Game, and Idaho Department of Environmental Quality are collecting samples of commonly eaten fish species. The goal is to provide the multi-agency Idaho Fish Consumption Advisory Program and the Coeur d'Alene Tribe with data about cadmium, lead, mercury, and arsenic levels in the fish. This will help determine if new or revised fish consumption advisories are needed.

Current fish advisories for Lake Coeur d'Alene are based on data taken 13 years ago. There is also a statewide advisory for bass consumption based on mercury concentrations. Previous sampling did not include today's popular game species such as northern pike, nor samples from other CDA Basin waterbodies located closer to historic mining areas.



By August, crews will have collected a total of 300 fish from nine different locations along the South Fork CDA River, CDA River and chain lakes, Coeur d'Alene Lake, and Spokane River in Idaho. Laboratory analysis will take place in the fall and winter. A findings report and any further guidance for healthy fish consumption for families fishing in the CDA Basin will be prepared during 2017.

Know your waterways, portion size, and safe eating guidelines for your family. Find current fish advisories in the Fish Consumption Guide on the Internet at <http://go.usa.gov/x34rm>.

The sampling plan and collection is a collaborative effort of many organizations: EPA, IDEQ, Idaho Fish and Game, the Coeur d'Alene Tribe, Idaho Department of Health and Welfare, Panhandle Health District, and the Idaho Fish Consumption Advisory Program.

CONTACT: **Dana Swift**, IDEQ • 208-373-0296 • dana.swift@deq.idaho.gov.

Working Together on Infrastructure



Mullan's Copper Street neighborhood will see lots of construction work this summer. The EPA and the local jurisdictions are carefully coordinating both utility work and 'remedy protection' work. That coordination will create efficiencies and stretch resources. Several activities will take place. The City of Mullan will be replacing portions of the sewer system. East Shoshone County Water District will be replacing water lines. The EPA's Remedy Protection Program will be installing storm water pipe and catch basins, and replacing the Boulder Creek culverts under School Street.

The work will be paced and timed to benefit all projects. Avista has already completed upgrades to gas lines in the area. After remedy protection and utility work is complete, the CDA Trust will repave portions of School, Copper, and Montana Streets. The remedy protection work is aimed at protecting people's health by keeping already-cleaned-up areas clean. Good work, everyone! A great example of coordination to allow more improvements to be done in the Silver Valley.

CONTACT: **Anne McCauley**, EPA Project Manager • 206-553-4689 • 800-424-4372 ext. 4689
• Email mccauley.anne@epa.gov.

Habitat in Progress...

The Idaho Department of Fish and Game hosted a planting event in June at the Robinson Creek wetlands restoration site. Over the last year, work has been under way to convert the hay field back into healthy wetlands for wildlife habitat – especially waterfowl. It's an especially valuable location because it escaped the lead contamination so prevalent in the lower Coeur d'Alene Basin.



Photo: IDEQ

The site is located between Rose Lake and Medimont. It is managed by IDFG as part of the Coeur d'Alene Wildlife Management Area. It's just across Highway 3 from the Schlepp wetlands restoration site.

Site excavation and grading was completed last fall. IDFG and IDEQ planted 3,000 woody trees and shrubs in May 2016. During the June planting event, staff and volunteers planted several thousand native rushes and sedges. The planting plan also includes plants such as wapato (water potato) with cultural significance to the Coeur d'Alene Tribe, a partner in the project.



Photo: Maureen Gilbert



Photo: IDEQ

at Robinson Creek Wetland



Photo: Maureen Gilbert

The Coeur d'Alene Basin Restoration Partnership and the Bonneville Power Administration provided funding for acquiring the property. Idaho Transportation Department also donated land at the project site. Funding for restoration actions is provided through IDEQ and EPA as wetlands mitigation for Page Repository expansion.

Improving this area to a healthy wetland habitat will provide valuable waterfowl nesting and feeding areas, and will enable necessary expansion of the Page Repository. It's a real win-win. Cheers to all the partners and volunteers!

CONTACT: **Bruce Schuld**, IDEQ • 208-783-5781
• bruce.schuld@deq.idaho.gov



Photo: Maureen Gilbert



Photo: IDEQ



Public Health
Prevent. Promote. Protect.

Panhandle Health District

Panhandle Health District – Helping to Protect Public Health

A big *Thank You* to Panhandle Health District for their ongoing quality work and dedicated service to the local community! PHD runs important programs related to the CDA Basin Cleanup.

The Institutional Controls Program, or ICP, is a locally-enforced set of rules to ensure that barriers placed over contaminants are maintained. The ICP issues permits for activities involving excavation, grading, construction, building demolition, and certain interior remodeling projects. The ICP also provides education, sampling assistance, clean soils for small projects, pick-up of soil removed from small projects, and disposal sites for contaminated soils. The purpose of the ICP is to protect public health and assist local land transactions within the Superfund site.

Panhandle Health District also manages the Lead Health Intervention and Blood Lead Screening programs. The District offers free blood lead screening for children and pregnant women (See Page 1). They hold a blood lead screening every summer when the risk for exposure is highest. Families may receive a monetary incentive for children when they have their blood lead levels checked. Testing is voluntary and results are kept confidential. PHD sends out mailers, runs newspaper and radio ads, and uses social media to promote the screening program. The District also does lead health education in schools and in the community. Keep a lookout for mascots Riley Raccoon and family. They are helping to spread the word: Keep Clean, Eat Clean, Play Clean.

CONTACT: **Andy Helkey** • 208-783-0707 • ahelkey@phd1.idaho.gov

Meet our Friends at PHD

Mary Rehnberg, Environmental Science Specialist

Mary has worked for the ICP since 2012. She attended Saint Martin's University. She has been married for 12 years and has a son and a daughter. She says, "We love living in the beautiful Silver Valley surrounded by our friends and family."

Jason Guardipee, Environmental Science Specialist

Jason is a lifelong resident of the Silver Valley and worked in mining and plumbing, before coming to Panhandle Health.

Valerie Wade, Environmental Health Specialist

Val has a degree in Geology from EWU and worked most of her career in the mining industry around the Silver Valley. She says, "I am lucky to live and work in such a beautiful place with so many interesting and warm hearted people!"

Candy Bailey, Financial Technician

Candy was born and raised in the Prichard area. She has worked for Panhandle Health for 28 years.

Donna Poulson, Administrative Assistant

Donna grew up in the Silver Valley, and has made it her home along with her husband of 17 years. She has worked at Panhandle Health District for 10 years. She says, "I feel fortunate to have a job that I believe supports the community where we have chosen to make our home."



Photo: PHD

PHD staff from left to right: Valerie Wade, Mary Rehnberg, Jason Guardipee, Donna Poulson, Andy Helkey. NOT SHOWN Candy Bailey

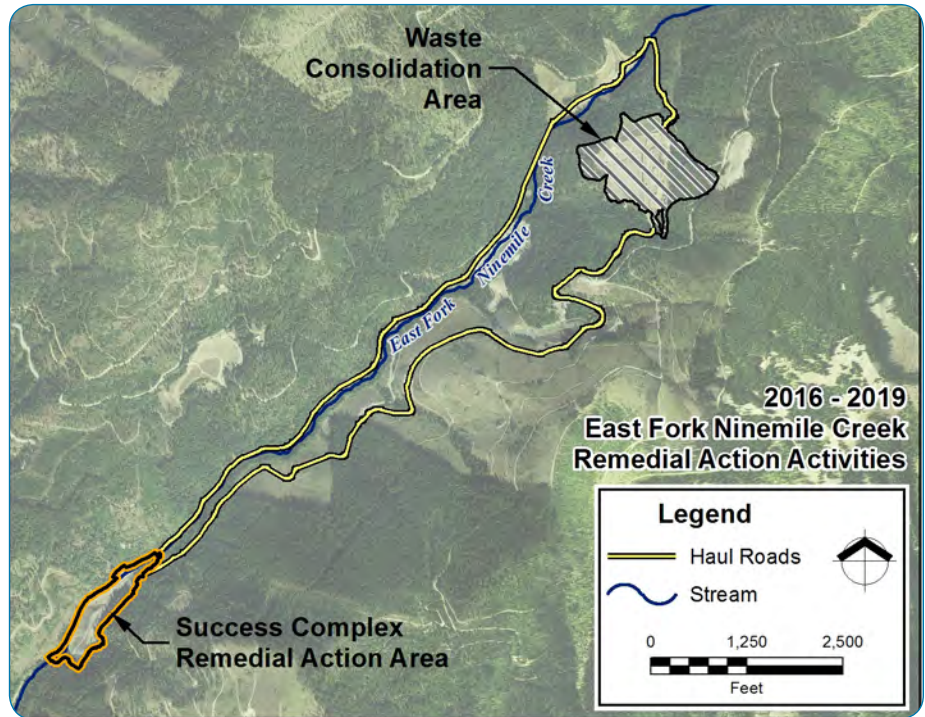
Andy Helkey, Program Manager

Andy has an Environmental Science degree from the University of Idaho and resides in Wardner with his daughter. He says, "I am proud to have a staff dedicated to providing a high level of customer service to the communities of the Silver Valley."

Cleanup at Success Mine Begins

Cleanup work at the old Success Mine started in June. The CDA Work Trust expects the Success cleanup to take 4 years. Trucks will haul contaminated material like soil and mine tailings from Success and place it in the Waste Consolidation Area. The WCA is a much smaller, isolated location that will store contaminated material from work in East Fork Ninemile. The project will help control sources of heavy metals like lead. The work protects the local ecology, people recreating, and communities downstream.

Regular local roads will remain open. The access roads between the Success Complex and the Waste Consolidation Area will close to the public during work hours.



The complex is located up in the East Fork Ninemile area. Work is being carried out under the EPA's Record of Decision for the Superfund cleanup. People in the area may have heard blasting at the WCA quarry in June and July. Several blasts were loaded and set off at the same time. The booms lasted for up to 30 seconds.

CONTACTS: **Tracy Chellis**, EPA Project Manager • 206-553-6326 • 800-424-4372 ext. 6326 • chellis.tracy@epa.gov
Dan Meyer, CDA Work Trust • 208-783-0222

Mapping the River's Bed



Photo: CH2M Hill

You may have seen the boat *Solmar Hydro* in the CDA River last month. Crews were doing river bed surveys. The slow-moving boat made several passes to do multi-beam sonar scans of the river bottom. Neither the river bed nor banks were disturbed during the work. This information will be used to observe how the channel bed has changed over time. This type of information could also help inform any potential future remedial actions in this area. This work was done as part of the EPA's investigation and cleanup of the Coeur d'Alene Basin.

CONTACT: **Ed Moreen**,
 EPA Project Manager • 208-664-4588
 • Email moreen.ed@epa.gov

Citizen Coordinating Council Evaluation

Wendy Green Lowe of The Participation Company is interviewing people to support an evaluation of the Citizen Coordinating Council and its support to the Basin Environmental Improvement Project Commission. Wendy has interviewed 30 people so far. The CCC was created under the 2002 Memorandum of Agreement that resulted in the creation of the Basin Commission. The MOA called for formation of the CCC to “serve as a primary conduit to and from the Basin Commission on citizen/community issues, concerns, and opportunities for input related to Commission activities.” If you would like to be interviewed as part of this effort, please contact Wendy by August 5.

To view the MOA, www.basincommission.com/BEIPC-MOA.pdf.

CONTACT: **Wendy Green Lowe** • 208-520-5338.



Wendy Green Lowe

Communities Continue Road, Utility Work



Photo: IDEQ

The EPA has provided Silver Valley Communities with \$10.7 million for work under local roads contracts this summer. City and county jurisdictions select their own engineers and contractors. The funds are from settlement dollars managed by EPA and the Coeur d' Alene Work Trust for the Paved Roads Board to repair or replace pavement on roads as an effective barrier to contamination. The work will result in about 19 miles of public roadway being repaved this summer.

Residents in some communities are taking advantage of the roads work by passing bond elections for utility repair that will occur before replacement of the road surfaces. Coordinating utility contracts with Paved Roadway Remediation contracts make the work more cost effective. Crews began infrastructure work in preparation for paving in April this year. Most of the concrete asphalt and soils generated by roads and utility work is being placed in Limited Use Repositories and other fill locations that meet siting criteria and that could benefit from additional elevation for redevelopment, such as Government Gulch.

CONTACT: **IDEQ, Kellogg Office** • 208-783-5781

Welcome Dan Smith, Air Quality Project Manager



Dan Smith

Photo: IDEQ

Welcome, Dan Smith, new Air Quality Project Manager for IDEQ. Dan comes to IDEQ with more than 20 years of experience in building partnerships, collaborative planning, and land use management. He looks forward to working to improve air quality in the Silver Valley. He'll be working with the community to replace older inefficient wood-burning stoves, fund community development of alternatives to open burning of yard debris, coordinate home energy improvements, and develop community based outreach and education. Dan is based in the Kellogg Superfund office.

CONTACT: **Dan Smith**, IDEQ • 208-783-5781

Email • dan.smith@deq.idaho.gov.

Jet Boat Races: EPA Sampling

Did you go watch the Jet Boat Races? EPA crews were there, collecting water samples. The samples are being tested to see if the races stirred up contaminated sediments from the river bed and banks. Sampling conditions were not ideal. Rain before the event increased the river's flow and kicked up some sediment. That might make it harder to measure the effect of the boats. Even so, early indications are that the jet boats had little detectable impact. Jet boats typically produce small wakes compared to recreational boats.

CONTACT: **Ed Moreen**, EPA Project Manager • 208-664-4588 • moreen.ed@epa.gov



Photo: Maureen Gilbert

Fireworks Launch from CIA



Photo: Maureen Gilbert

Once again, fireworks blasted off the Central Impoundment Area, this Fourth of July. The CIA is the large, closed tailings impoundment next to the freeway in Kellogg. The EPA and IDEQ have approved the use of the space each year for launching the fireworks show for about the last 8 years. Safety measures, including fire suppression procedures, were in place to protect people and property. Rick Gilbert, Silver Valley Pyrotechnics, said, "We're glad to be able to launch from the CIA. It allows for a phenomenal display because of the elevation. The community loves it!" Show organizers coordinate with the City of Kellogg, Idaho Department of Lands, and Shoshone Fire District No. 2.

CONTACT: **Jan Olsen**, IDEQ • 208-783-5781

Email • jan.olsen@deq.idaho.gov

New Limited Use Repositories Coming On Line

Two new limited use repositories will be taking in waste materials from the cleanup's roads program. One is located at the Shoshone County Transfer Station. The other is located east of Silver Hills Elementary in Osburn. When the latter is completed, it will cut down on dust next to the school. The LURs will take in base materials and asphalt from local road projects. Typically, road waste has lower levels of lead contamination than other cleanup materials. This disposal option helps save room in the regular repositories for more contaminated waste. When the LURs are closed and capped, they will be flat spaces ready for redevelopment by businesses. Environmental covenants will help protect people's health and the environment.



Photo: Maureen Gilbert



Photo: Maureen Gilbert

CONTACTS:

Bruce Schuld, IDEQ

• 208-783-5781

• bruce.schuld@deq.idaho.gov

Craig Cameron, EPA

• 509-376-8665

• cameron.craig@epa.gov

Want Timely Updates? Visit us on Facebook!



One of the best ways to stay up-to-date on the cleanup work is to sign up for our Facebook page. Watch for two or three short posts a week. We invite you to check it out!

<https://www.facebook.com/CDAbasin>

Documents

North Idaho College Library

Molstead Library
1000 Garden Avenue – Coeur d'Alene, ID 83814
208-769-3355

Wallace Public Library

415 River Street – Wallace, ID 83873
208-752-4571

Spokane Public Library

906 West Main Avenue – Spokane, WA 99201
509-444-5336

EPA Field Office

1910 Northwest Boulevard, Suite 208
Coeur d'Alene, ID 83814
208-664-4588

EPA Seattle Office

Superfund Record Center
1200 Sixth Avenue – Seattle, WA 98101
206-553-4494 or 800-424-4372

St. Maries Library

822 W. College Avenue – St. Maries, ID 83861
208-245-3732

Kellogg Public Library

16 West Market Avenue – Kellogg, ID 83837
208-786-7231

Opportunities to Get Involved

Basin Environmental Improvement Project Commission (BEIPC)

EXECUTIVE DIRECTOR:

Terry Harwood

208-783-2528

<http://www.basincommission.com>

Citizens Coordinating Council (CCC)

CHAIR:

Jerry Boyd

509-220-1453

<http://www.basincommission.com/cc.asp>

The Basin Bulletin is published by the U.S. Environmental Protection Agency three times a year. The Basin Bulletin offers updates on the Superfund cleanup in the Coeur d'Alene Basin. For mailing list changes, to send comments on this newsletter, contact the editors, or submit articles for consideration, contact Andrea Lindsay as noted. Mention of trade names, products, or services does not convey, and should not be interpreted as conveying, official EPA approval, endorsement, or recommendation.

Alternative formats are available.

For reasonable accommodation, please call

Andrea Lindsay at 206-553-1896

TTY users, please call the Federal Relay Service at 800-877-8339.



EPA Community Involvement Contact

Andrea Lindsay

Lindsay.Andrea@epa.gov 1-800-424-4372 ext. 1896



Inside...

- Lower Burke Canyon Repository: EPA Responds to Community Input
- Free Blood Lead Screening July 25-30
- Central Treatment Plant Upgrades Coming
- Fishing for Health Clues
- Habitat in Progress: Robinson Creek
- Much More



**Learn More About the
Coeur d'Alene Basin Cleanup
on the Web**

[http:// osemite.epa.gov/r10/cleanup.nsf/sites/bh](http://osemite.epa.gov/r10/cleanup.nsf/sites/bh)