



Coming In 2016: Copper Street Neighborhood and Boulder Creek Drainage Improvement Project



Coeur d'Alene Basin Cleanup

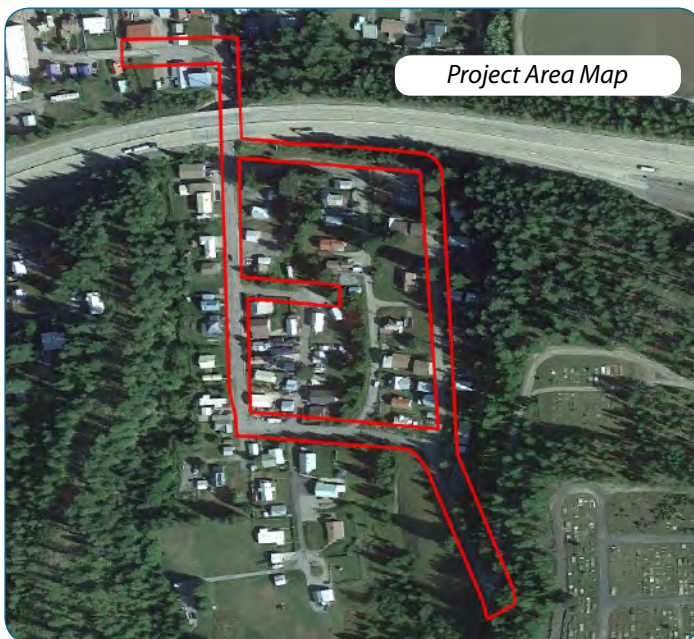
March 2016 2016

Construction of drainage improvements in the Copper Street neighborhood and in Boulder Creek at School Street will take place this summer. The project will protect completed cleanup work. Work is expected to begin in June and be completed in the fall. The project site is on the southeast side of Mullan, south of Interstate 90. Storm water in the neighborhood bounded by Idaho, 8th, Montana, and Copper Streets runs down roadways and gravel shoulders causing erosion of clean barriers. The Boulder Creek culverts at School Street are in very poor condition.

The project will include:

- Constructing a system of underground storm water pipes with catch basins and manholes along Montana, Idaho, Copper, and School Streets
- Rebuilding roadside drainage ditches along Cemetery Road, Idaho, Montana, and 8th Streets
- Rebuilding 8th Street with a new curb and gutter
- Resurfacing the roadways that will be disturbed during installation of the new storm drain system
- Replacing the Boulder Creek culverts at School Street with a new concrete box culvert.

Once work starts in June, working hours will be between 7:00 a.m. and 7:00 p.m. You will notice big construction equipment and trucks. Temporary road closures and traffic detours will be necessary. The contractor will notify affected residents before closing roads or limiting property access. We know that work poses an inconvenience to residents. Thank you for your patience while we work in your neighborhood. Please contact us if you have concerns.



The Work Helps Keep Cleaned Up Areas Clean

Remedy Protection projects like this one help to protect work already done as part of the Coeur d'Alene Basin Cleanup. They help keep cleaned up areas clean and reduce the chance that people will be exposed to contamination. These upgrades to local infrastructure also help protect private and public property from flooding and stormwater runoff.

The Coeur d'Alene Trust, the Idaho Department of Environmental Quality, and the EPA coordinate this and other Remedy Protection projects with local jurisdictions and property owners. The project is funded by settlement money and does not use local funds.

For More Information Contact:

Jim Finlay, Assistant Program Manager, 783-0222

Rene Gilbert, EPA Community Liaison, 659-5237

WEB: <http://yosemite.epa.gov/R10/cleanup.nsf/sites/bh>

FACEBOOK: <http://www.facebook.com/CDAbasin>