

**PHASE 2 PHYSICAL HAZARDS MITIGATION
FORMER ABANDONED URANIUM MINE SITES
SMITH LAKE AND MARIANO LAKE CHAPTERS, MCKINLEY COUNTY, NEW
MEXICO**

SFUND RECORDS CTR
2389821

JUNE 2018



BLACK JACK NO. 1



BLACK JACK NO. 2



MAC NO. 1



MAC NO. 2

Prepared for:



BARRICK



Prepared by:



iiná bá, Inc.

1812 Schofield Lane
Farmington, NM
Phone: (505) 327-1072
Fax: (505) 327-1517

***iiná bá* Project No.: 17-001-03**

PHASE 2 PHYSICAL HAZARDS MITIGATION
FORMER ABANDONED URANIUM MINE SITES
SMITH LAKE AND MARIANO LAKE CHAPTERS, MCKINLEY COUNTY, NEW
MEXICO

TABLE OF CONTENTS

<u>TITLE</u>	<u>PAGE</u>
EXECUTIVE SUMMARY	ES-1
LIST OF ACRONYMS	LOA - 1
1.0 INTRODUCTION	1
1.1 Purpose and Intent.....	1
1.2 Site History.....	1
1.3 Current Site Characteristics.....	3
1.4 Clearances, Notifications, and Permits.....	3
1.5 Health and Safety.....	4
2.0 HAZARDS MITIGATION ACTIVITIES	5
2.1 Basis for Hazards Mitigation.....	5
2.2 Physical Hazards Definition.....	5
2.3 Physical Hazards Mitigation Activities.....	6
2.3.1 Mitigation of Sharp Metal Objects.....	6
2.3.2 Mitigation of Open Pits and Holes.....	7
2.3.3 Mitigation of Sharp Metal Debris.....	7
2.3.4 Installation of Mitigation Signage.....	8
2.3.5 Installation of Additional Fencing.....	8
3.0 HAZARDS MITIGATION RESULTS	9
4.0 HAZARDS MITIGATION CONCLUSIONS	10

APPENDICES

APPENDIX 1

FIGURES

Figure 1 – Site Location Map

Figure 2 – Hazards Location Map (Black Jack No. 1)

Figure 3 – Hazards Location Map (Black Jack No. 2)
Figure 4 – Hazards Location Map (MAC No. 1)
Figure 5 – Hazards Location Map (MAC No. 2)
Figure 6 – Hazards Warning Sign Location Map (Black Jack No. 1)
Figure 7 – Hazard Warning Sign Location Map (Black Jack No. 2
and MAC No. 2)
Figure 8 – Hazard Warning Sign Location Map (MAC No. 1)

APPENDIX 2 TABLES

Table 1: Abandoned Uranium Mine Hazards Summary
Table 2: Barrick Gold Hazards Mitigation Sign Locations

APPENDIX 3 PHOTOGRAPHIC DOCUMENTATION

APPENDIX 4 SUPPORTING DOCUMENTATION

Jobsite Safety Meeting Forms (9)
Flowable Fill Delivery Tickets (9)
Site Hazards Sign

**PHASE 2 PHYSICAL HAZARDS MITIGATION
FORMER ABANDONED URANIUM MINE SITES
SMITH LAKE AND MARIANO LAKE CHAPTERS, MCKINLEY COUNTY, NEW MEXICO**

LIST OF ACRONYMS

AOC	Agreement and Order on Consent
CFR	Code of Federal Regulations
CPG	Certified Professional Geologist
cy	cubic yards
GPS	global positioning system
(HL)	hole
HMC	Homestake Mining Company
Inc.	Incorporated
LLC	Limited Liability Company
MI	mine shaft
NAML	Navajo Abandoned Mine Lands
NNEPA	Navajo Nation Environmental Protection Agency
No.	number
NV	North Vent
OH	open hole
PPE	personal protective equipment
PHA	Physical Hazards Mitigation
Psi	pounds per square inch
SOW	Scope of Work
USEPA	United States Environmental Protection Agency
WCA	Water Code Administration

PHASE 2 PHYSICAL HAZARDS MITIGATION
FORMER ABANDONED URANIUM MINE SITES
SMITH LAKE AND MARIANO LAKE CHAPTERS, MCKINLEY COUNTY, NEW
MEXICO

1.0 INTRODUCTION

Homestake Mining Company (HMC) of California, in concert with the United States Environmental Protection Agency (USEPA) Region 9; the Navajo Nation Environmental Protection Agency (NNEPA), and the Navajo Abandoned Mine Lands (NAML) Reclamation Department, requested, under Purchase Order No. 111011/O, the performance of Phase 2 *Physical Hazards Mitigation* (PHM) at the former Black Jack Nos. 1 & 2 and MAC Nos. 1 & 2 mine sites in accordance with the *Administrative Settlement Agreement and Order on Consent* (AOC), dated August 27, 2014, and the *iiná bá, Inc. (iiná bá) Cost Proposal for Site Hazards Mitigation on Abandoned Uranium Mine Lands* dated November 2017. The location of the subject sites is shown on **Figure 1 in Appendix 1**, with their relationship to the Smith Lake Chapter and the Mariano Lake Chapter.

1.1 Purpose and Intent

The purpose of this effort was to:

- Mitigate (eliminate or remove) physical hazards at the former mine sites to make the subject sites safer from significant harm in the event human interaction occurs.

The intent of this effort was to:

- Perform hazard mitigation measures to be in compliance with or in accordance with mandates specified under the AOC between HMC and the USEPA.

1.2 Site History

Black Jack No. 1

Black Jack No. 1 is a closed underground uranium mine located in the Northeast 1/4 of the Northeast 1/4 of the Southwest 1/4 of Section 12, Township 15 North, Range 13 West, in McKinley County, New Mexico. The mine workings consisted

of an 825-foot, three-compartment shaft with multiple drifts. The mine was operated from 1959 through 1967, although uranium deliveries from the mine continued until 1971. In total, the mine produced approximately 1.44 million tons of ore yielding approximately 6,447,000 pounds of uranium concentrate. Mining operations ceased on June 30, 1967. In July 1967, the vent holes and mine shaft were sealed with half-inch steel plates, which were welded in place.

Black Jack No. 2

Black Jack No. 2 is a closed underground uranium mine located in the Northwest 1/4 of Section 18, Township 15 North, Range 13 West, in McKinley County, New Mexico. The mine workings consisted of a 330-foot vertical shaft with drifts. The mine was operated from 1960 through 1964, although uranium deliveries from the mine continued until 1970. Upon information and belief, deliveries from 1964 (after closure) through 1970 were from ore stockpiles, not the resumption of mining at Black Jack No. 2. In total, the mine produced 247,613 tons of ore yielding 1,129,004 pounds of uranium concentrate. In August 1964, Homestake-Sapin Partners requested permission from the United States Department of the Interior to extract the shaft pillars, backfill the shaft and seal the mine. After the United States Department of the Interior granted such permission in August 1964, the shaft pillars were extracted, the shaft was backfilled and the mine's vent holes and shaft were sealed with half-inch steel plates. Subsequently, the mine shaft was covered with a concrete slab.

MAC No. 1

Mac No. 1 is a closed underground uranium mine located in the Northeast 1/4 of the Southeast 1/4 of Section 12, Township 15 North, Range 14 West, in McKinley County, New Mexico. The mine workings consisted of a 515-foot vertical shaft with two levels. The mine was operated from 1968 through April 1971, although uranium deliveries from the mine continued until 1979 or 1980. Upon information and belief, deliveries from 1971 (after closure) through 1979 or 1980 were from ore stockpiles, not the resumption of mining at Mac No. 1. In total, the mine produced approximately 400,000 pounds of uranium concentrate.

The mine was closed in 1971, and the shaft was backfilled and covered with a concrete slab.

MAC No. 2

Mac No. 2 is a closed underground uranium mine located in the Northeast 1/4 of the Southeast 1/4 of the Southeast 1/4 of Section 18, Township 15 North, Range 13 West, in McKinley County, New Mexico. The mine workings consisted of a 288-foot vertical shaft with multiple drifts. The mine was operated from 1968 through 1970. In total, the mine produced 31,194 tons of ore yielding 109,009 pounds of uranium concentrate. The mine was closed in 1970, and the shaft was backfilled and concreted over.

1.3 Current Site Characteristics

Currently, all four (4) sites are abandoned with only certain physical features remaining as the result of past mining operations and site occupation. The following summarizes the general features remaining on the subject sites that were a part of this hazards mitigation:

- Former mine shafts;
- Former mine vents;
- Former utility raises;
- Concrete slabs;
- Former utility infrastructures (including water wells/septic tanks and diversion ditches);
- Former (abandoned) mine buildings; and,
- Miscellaneous open holes.

The primary mine site features mitigated under this PHM were obtained from documentation contained within a *Phase 2 Physical Hazards Assessment*, conducted by *iiná bá* (November 2017)

1.4 Clearances, Notifications, and Permits

Prior to the performance of this hazards mitigation, notification was given to the Smith Lake Chapter house before entering the subject properties. Access to the subject properties was in place prior to performing this effort through notification letters with the

allotees. The USEPA and NNEPA were notified in advance of the proposed field schedule for data collection and granted approval to proceed with the effort via e-mail on Thursday, November 16, 2017. No other clearances or permits were required to perform the subject effort since no intrusive (ground disturbing) activities were to be performed.

1.5 Health and Safety

The work performed under this effort was conducted in Level D personal protective equipment (PPE). A First Aid kit and fire extinguisher were in the support vehicle during the performance of mitigation activities. Daily *Job Site Safety Meeting Forms* were prepared prior to each mitigation activity. Copies of these forms are included in **Appendix 4**.

2.0 HAZARDS MITIGATION ACTIVITIES

2.1 Basis for Hazards Mitigation

The basis for this PHM is in accordance with the AOC between HMC and the USEPA. Per the *Scope of Work (SOW)* in *Appendix A* of the AOC, the following “areas” were to be addressed:

- Open holes related to the Sites; and,
- Exploratory holes within the Sites.

The SOW further states under Section 4.2, paragraph 4.2.1 that all vent holes, openings and other surface features related to a mine that pose a physical threat to humans or animals must be assessed.

2.2 Physical Hazards Definition

Based on the intent of the AOC and SOW, the mitigation of “physical threats” (hazards) is to be performed at the subject sites. With regards to the *Occupational Safety and Health Administration* (29 CFR 1910.120), there are several major categories associated when performing a *Hazard Determination*, which this effort is, in part, intended to meet on a limited basis. A *Hazard Determination* focuses on many hazard types that can include:

- Physical hazards (fire hazards, reactive hazards, explosion hazards, bodily injury);
- Health hazards; and;
- Ionizing hazards.

To meet the intent of the AOC and SOW, this effort focused on only the physical hazard category. Any health-related hazards or ionizing (radiation) hazards associated with the remaining mine site features will be assessed under Phase 3 activities – the removal site evaluation. For purposes of this PHM, the following definition for “Hazard Determination” was used when evaluating an existing mine surface feature:

“a hazard that is an actual or potential cause or source of serious harm.”

Serious harm can further be defined or understood to be:

- Any harm that results in hospitalization;
- Broken bones (fractures), lacerations, or crushing;
- Amputation of body part;
- Loss of vision or penetrating eye wound; or,
- Permanent loss of bodily function or temporary severe loss of bodily function.

It should be noted that the evaluation of a significant physical hazard is not based on any perceived level of risk or any level of probability that an injury will occur. The assessment of risk is entirely separate from determining the level or severity of a physical hazard. All significant physical hazards are judged the same with regards to this effort. The probability of whether one hazard is likely to occur vs. another hazard is dependent upon many factors, which are not considered for this PHM.

2.3 Physical Hazard Mitigation Activities

Physical hazards were mitigated in phases in according to the following sequence of activities:

1. Removal of sharp metal objects or protrusions;
2. Infilling, capping, covering of open pits or holes;
3. Fencing of sharp physical objects that cannot be removed; and,
4. Installation of physical hazard mitigation signage.

Table 1 in **Appendix 2** summarizes the specific physical hazards mitigated during this effort and photographs depicting the mitigation methods and final results are included in **Appendix 3**. The following sections summarize the mitigation methods conducted.

2.3.1 Mitigation of Sharp Metal Objects

Mine site features with sharp metal edges or protrusions that could result in a significant puncture injury were mitigated by cutting the features flush with a surrounding level surface such as a concrete slab or ground surface using a reciprocating saw, cutting wheel, or acetylene cutting torch. These features were removed from the four (4) mine sites between Tuesday and Wednesday, November 28 and 29, 2017 and on Saturday, December 2, 2017. Photographs of the hazards during and after the mitigation efforts are included in **Appendix 3**.

2.3.2 Mitigation of Open Pits and Holes

Mine site features consisting of subsided or open holes that could result in a significant fall injury were mitigated by covering/filling the holes with native soils or filling with flowable fill from a commercial off-site source. These features were mitigated from the four (4) mine sites on Thursday, November 30, Monday, December 4 and Tuesday, December 5, 2017. The Open Hole (HL) and Utility Raise U4 at Black Jack No. 1, and Utility Raise U3 at Black Jack No. 2 were sealed using a 6" diameter inflatable hole packer inflated to approximately 30 pounds per square inch (psi). Photographs of the installed packer are included in **Appendix 3**. The subsidence at North Vent Shaft (NV) at Black Jack No. 1 and partially buried mine shaft at MAC No. 2 were mitigated by moving native soils mounded around the steel vent shafts using a John Deere 328E skid-steer in to the subsided area and compacting the soils in place until the original grade was restored (see **Appendix 3**). The open pits in the floor of the concrete slab of the Hoist House at Black Jack No. 1 and the subsided mine shaft (MI) at Black Jack No. 2 were filled with a flowable fill mixture provided by Michele's Ready Mix of Gallup, New Mexico. A total of 90 cubic yards (cy) of fill were required to mitigate these features (see *Delivery Tickets* in **Appendix 4**). The Open Holes (OH1 and OH2) at MAC No. 2 were filled using native soils from the area surrounding the holes to land surface and compacted in place (see **Appendix 3**).

2.3.3 Mitigation of Sharp Metal Debris

The mine waste (Debris) pile located at MAC No. 2 was mitigated from potential exposure by installing a chain-link fence around the debris until its final determination on disposal is made. On Monday, December 11, Wednesday, December 13, and Friday, December 15, 2017, a total of 150 lineal feet of chain-link fencing was installed at the subject site. A six-foot fence with corner posts and top-rail was installed by auguring a hole into overburden soils using a John Deere 329E skid-steer with auger attachment. Concrete mix was prepared onsite with a portable mixer to set the line poles. The fence was installed after

24-hours of curing time to complete the fence around the subject hazard. Photographs of the fencing mitigation effort are included in **Appendix 3**.

2.3.4 Installation of Mitigation Signage

A total of 40 hazard warning signs (see **Appendix 4**) were installed across the four (4) mine sites between Monday, January 29 and Wednesday, January 31, 2018. Each sign was mounted to a six-foot "T"-post driven into native soils using a T-post driver. Sheet metal screws were used to attach each sign to a post at a location designated by the USEPA and Homestake based on the outline of impacted soil areas as depicted on **Figures 6 to 8** in **Appendix 1**. Four (4) biological hazard warning signs were installed on the two (2) steel buildings located at the MAC No. 1 mine site. A sign was installed using sheet metal screws to each main entry point to the Service Building (B1) and the Hoist House (B2). Photographs of the signs and installation process are included in **Appendix 3**. **Table 2** in **Appendix 2** summarizes the coordinates (State Plane and Latitude/Longitude) for all 40 signs installed.

2.3.5 Installation of Additional Fencing

At the request of Mr. Jacob Phipps with the USEPA, the filled Mine Shaft (MI) feature at Black Jack No. 2 was secured with a permanent chain-link fence on Thursday, June 7, 2018. A total of 120 lineal feet of chain-link fencing was installed at the subject site. A six-foot fence with corner posts and top-rail was installed by hand into overburden soils using a post-hole digger. Concrete mix was prepared onsite with potable water. As an additional note, the filled shaft feature with flowable fill was still intact and at the same elevation as when it was put in place in December 2017. Photographs of the fencing mitigation effort are included in **Appendix 3**.

3.0 HAZARDS MITIGATION RESULTS

The following summarizes the statistics related to the mitigation of physical site hazards at the Black Jack No. 1, Black Jack No. 2, MAC No. 1 and MAC No. 2.

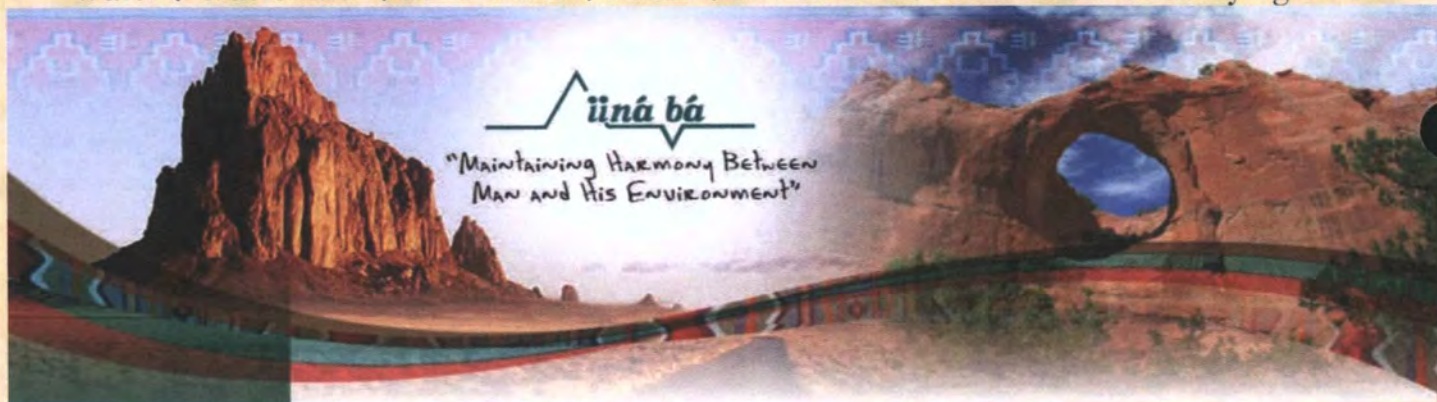
- Significant physical hazards related to sharp or protruding metal features were mitigated in three (3) working days;
- Significant physical hazards related to open holes, shafts, or pits were mitigated in three (3) working days;
- A total of 90 cubic yards of flowable fill were required to mitigate open or partially open vent/mine shafts;
- A total of 270 lineal feet of chain-link fencing was installed to mitigate sharp metal debris and filled mine shaft features in four (4) working days; and,
- A total of 40 hazard warning signs (and four biohazard warning signs) were installed as part of the hazard mitigation effort in three (3) working days.

4.0 HAZARD MITIGATION CONCLUSIONS

Based on the results from the Phase 2 Physical Hazards Mitigation conducted at the four (4) subject mine site locations, the following conclusions were drawn:

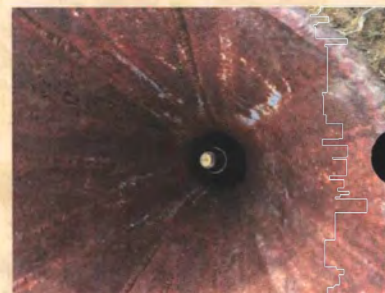
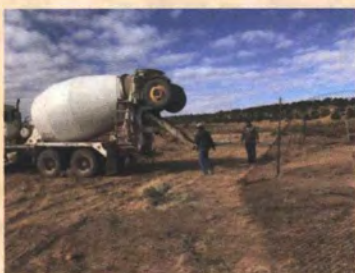
- The mitigation measures implemented as part of this Hazard Mitigations were implemented in accordance with the AOC and SOW and are in compliance with the intent of the AOC and SOW; and,
- The subject mine sites are free from the recognized significant physical hazards related to past mine activities that are protective of human health and the environment.





APPENDIX 1 — FIGURES
PHASE 2 HAZARDS MITIGATION REPORT
FORMER BLACK JACK NOS. 1 & 2, AND MAC NOS. 1 & 2
SMITH LAKE AND MARIANO LAKE CHAPTERS, MCKINLEY COUNTY, NEW MEXICO

PURCHASE ORDER No. 111010/0



PREPARED FOR:
HOMESTAKE MINING COMPANY OF CALIFORNIA (BARRICK)
P. O. BOX 980
ELKO, NV 89830

PREPARED BY:
IINÁ BÁ, INC.
1812 SCHOFIELD LANE
FARMINGTON, NM 87401
www.iinábá.com
PHONE: (505) 327-1072
FAX: (505) 327-1517
JUNE 2018



SOURCE: GOOGLE EARTH IMAGE (2016)
CONTOUR INTERVAL = 20 FEET

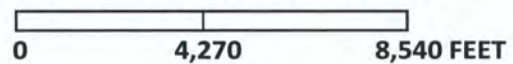
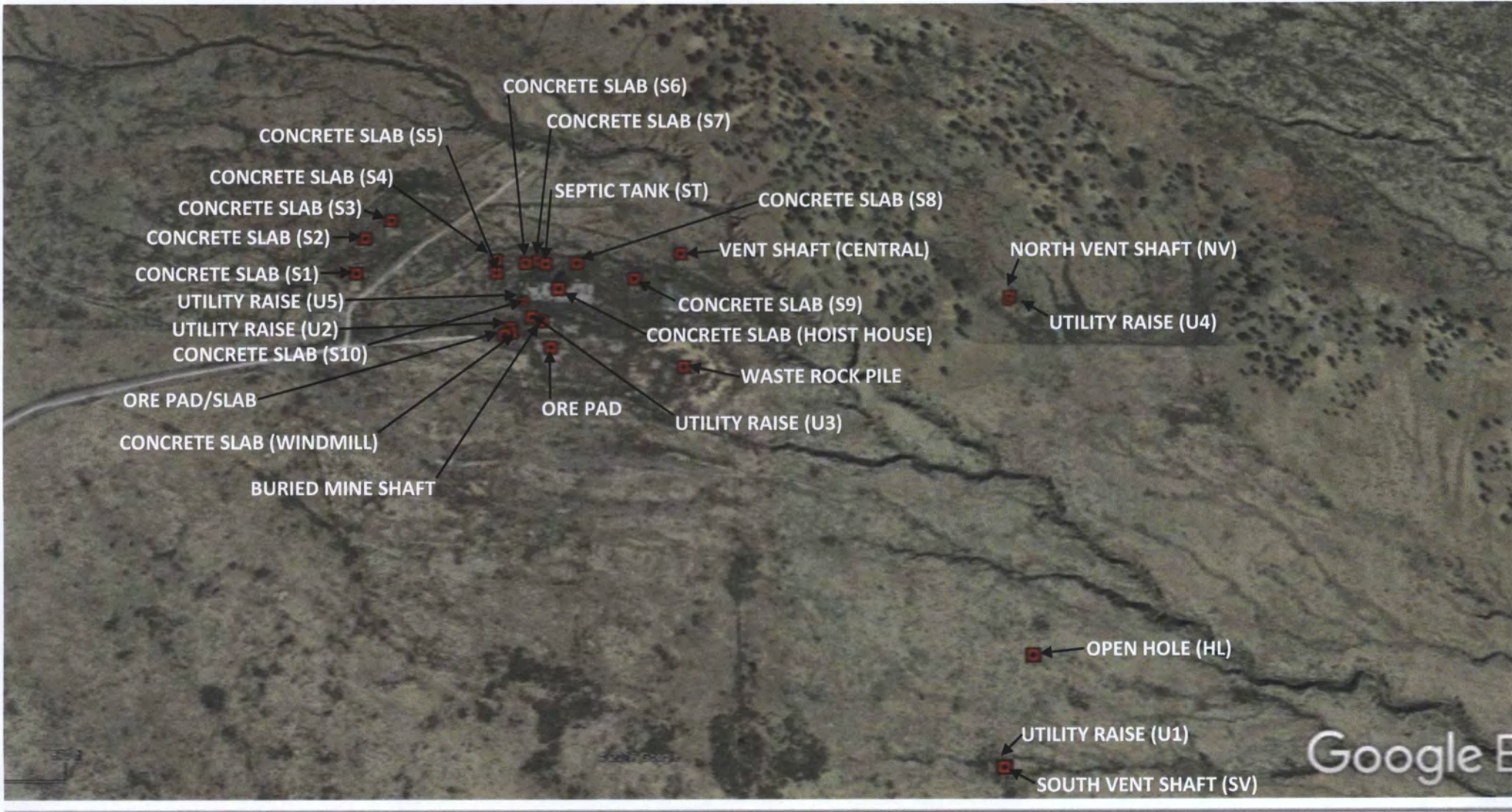


FIGURE 1: SITE LOCA



SOURCE: GOOGLE EARTH IMAGE (10/62016)

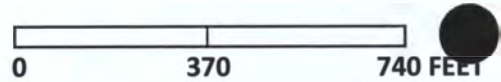
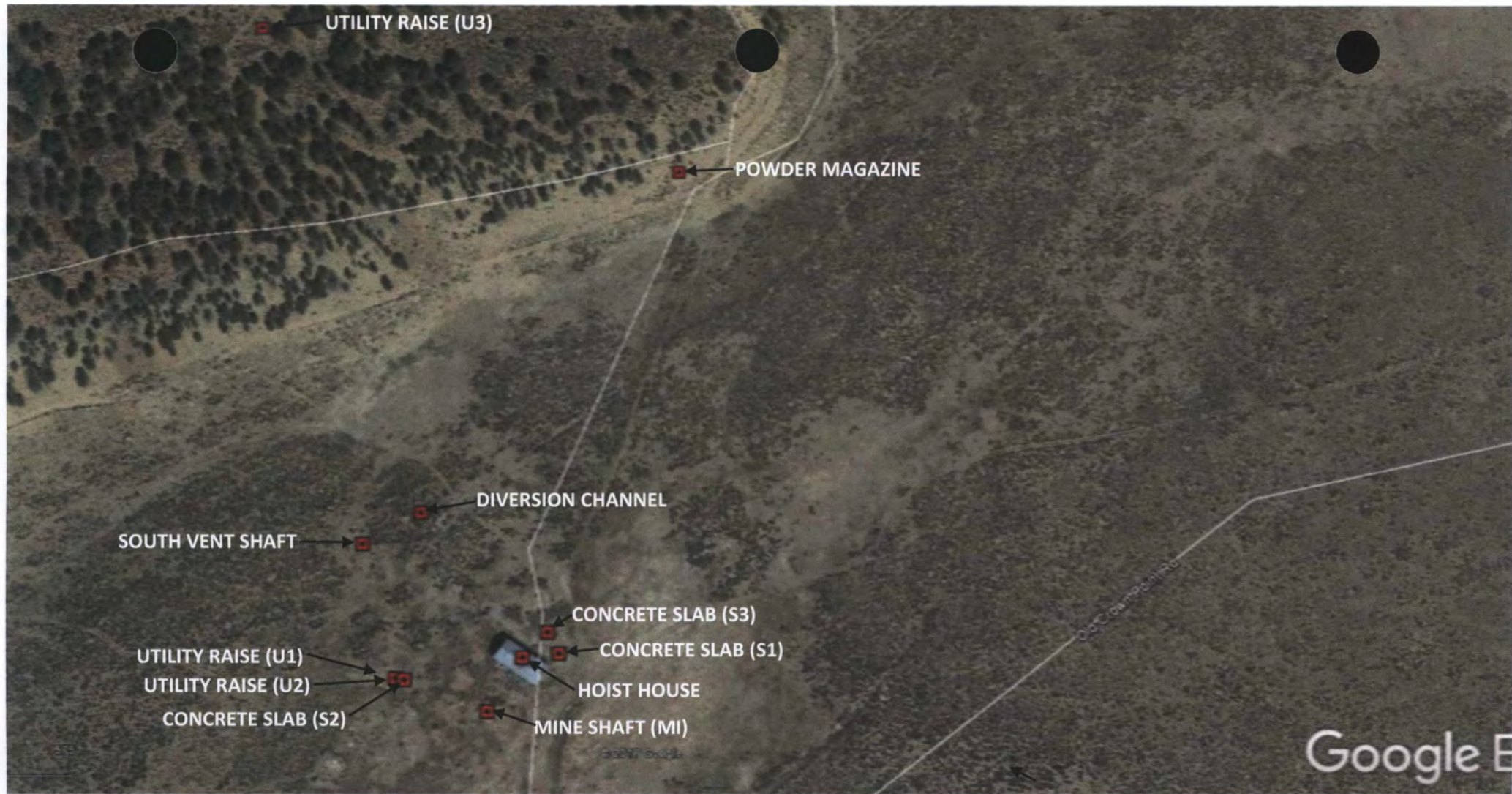


FIGURE 2: HAZARDS LOCATION MAP (BLACK JACK MINE)



SOURCE: GOOGLE EARTH IMAGE (10/62016)

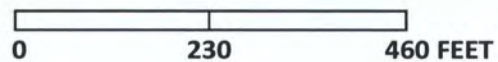


FIGURE 3: HAZARDS LO
(BLACK JACK M



SOURCE: GOOGLE EARTH IMAGE (10/6/2016)



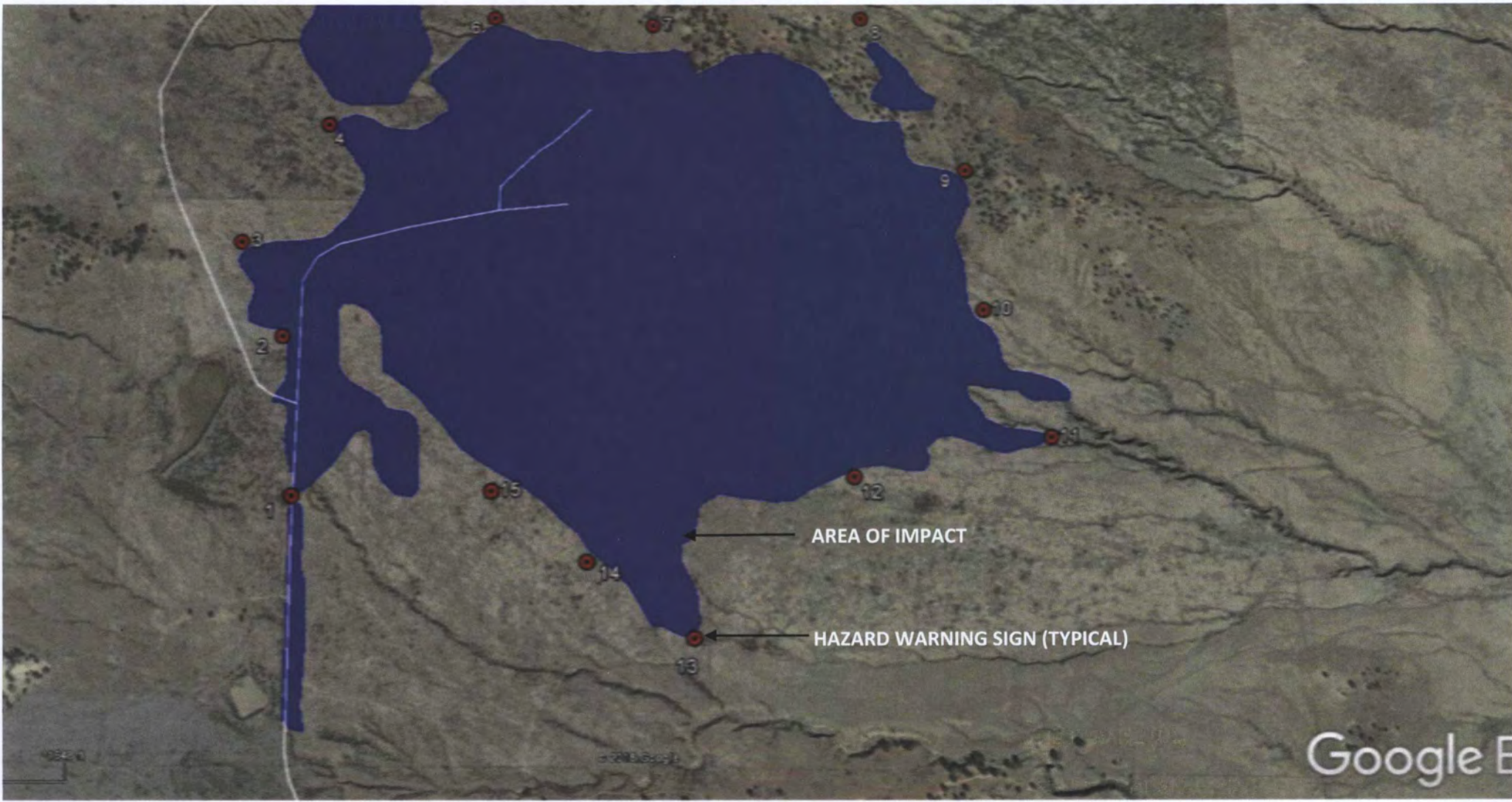
FIGURE 4: HAZARDS LO (MAC NO. 1)



SOURCE: GOOGLE EARTH IMAGE (10/6/2016)



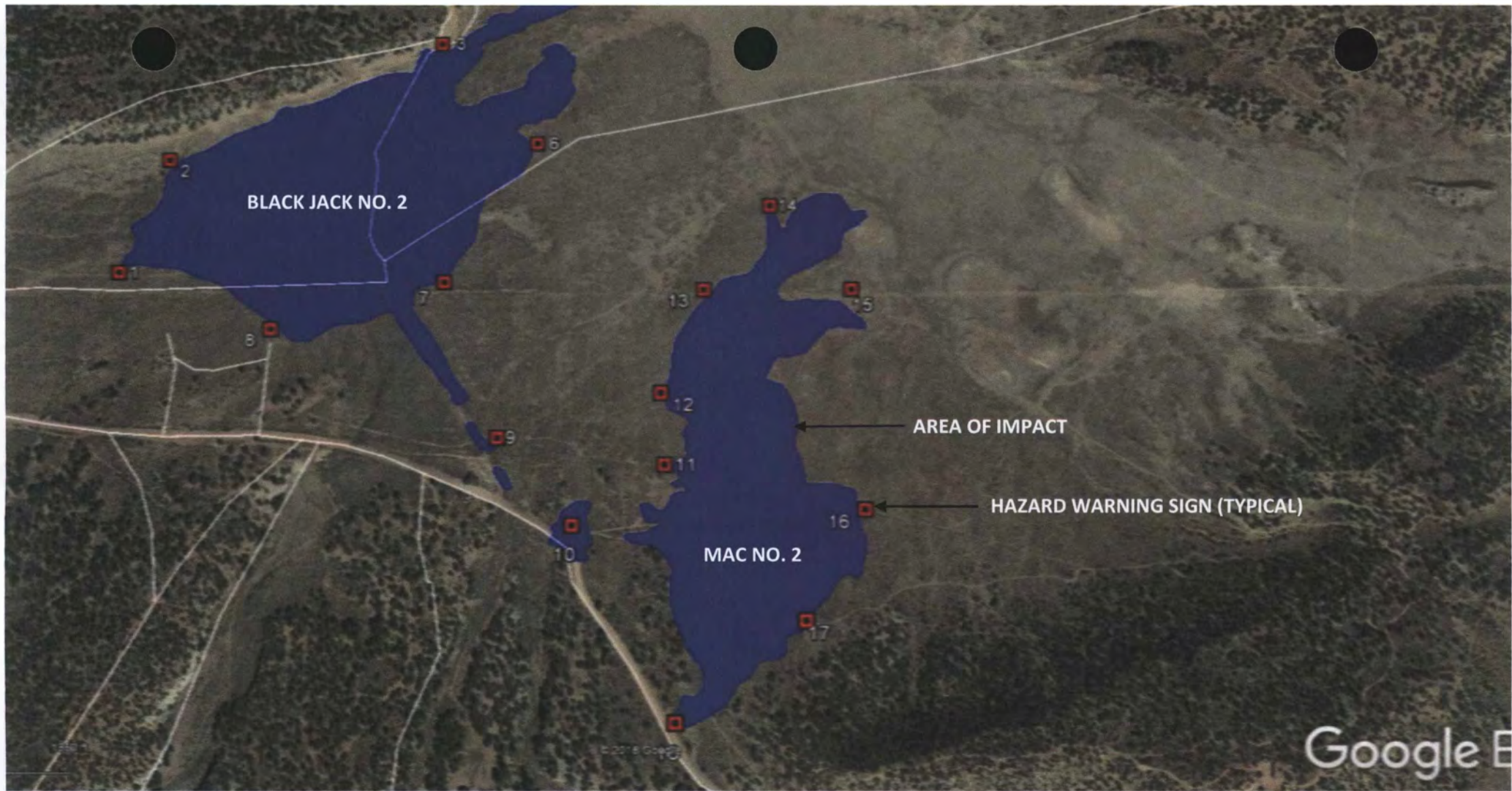
FIGURE 5: HAZARDS LO
(MAC NO. 2)



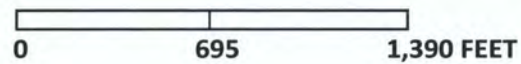
SOURCE: GOOGLE EARTH IMAGE (10/6/2016)



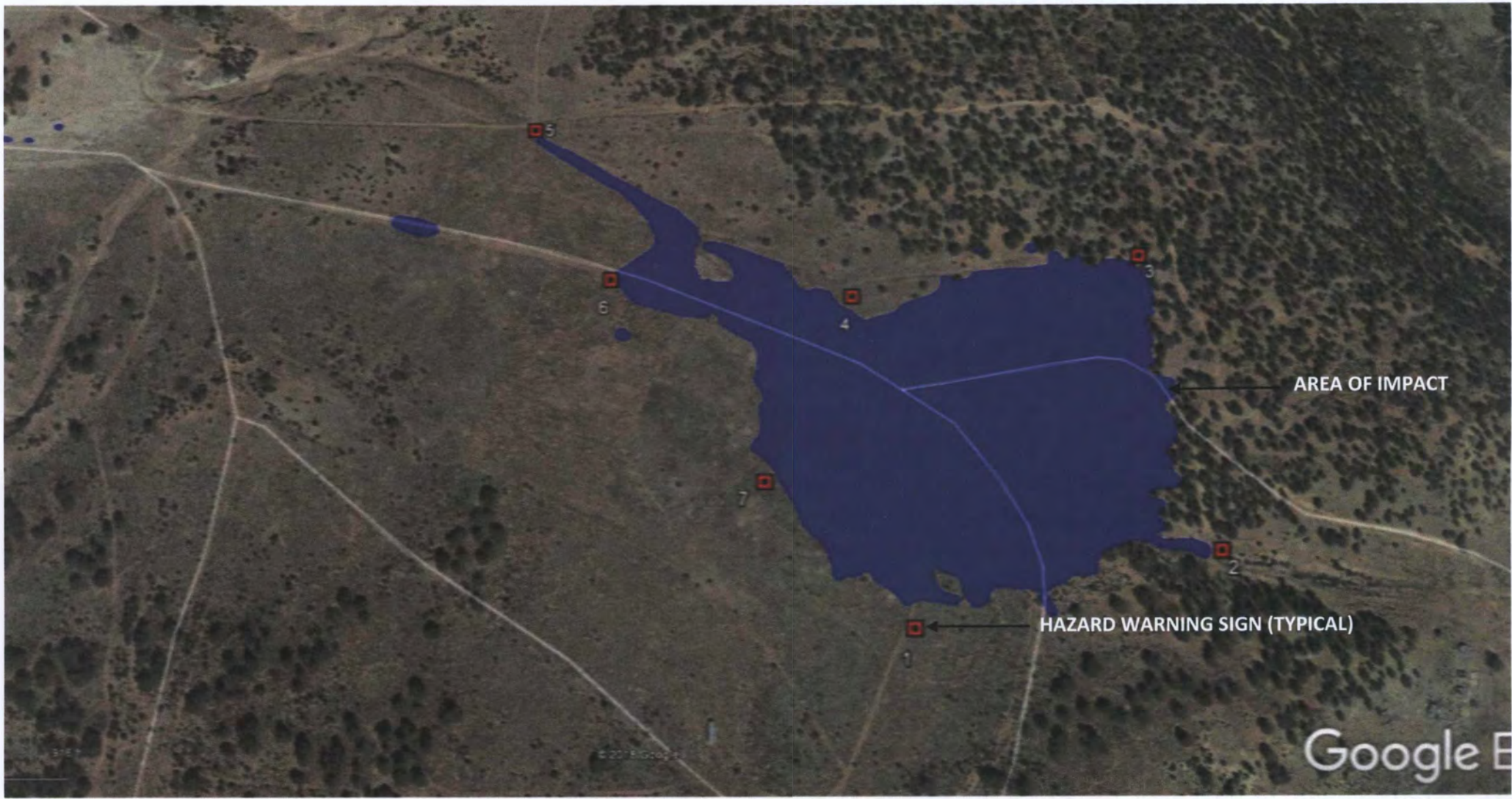
FIGURE 6: HAZARD WARNING SIGN (BLACK JACK M...)



SOURCE: GOOGLE EARTH IMAGE (10/6/2016)



**FIGURE 7: HAZARDS WARNING SIGN LOCATIONS
(BLACK JACK NO. 2 AND MAC NO. 2)**



SOURCE: GOOGLE EARTH IMAGE (10/6/2016)

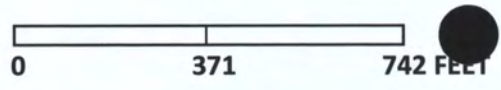
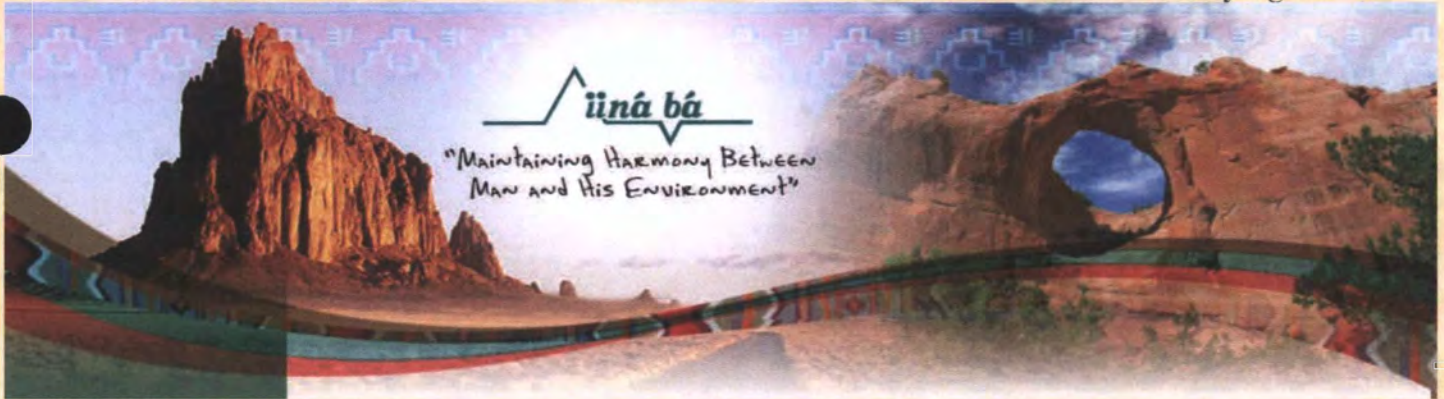


FIGURE 8: HAZARD WARNING SIGN (MAC NO. 1)



APPENDIX 2 — TABLES
PHASE 2 HAZARDS MITIGATION REPORT
FORMER BLACK JACK NOS. 1 & 2, AND MAC NOS. 1 & 2
SMITH LAKE AND MARIANO LAKE CHAPTERS, MCKINLEY COUNTY, NEW MEXICO

PURCHASE ORDER No. 111010/O



PREPARED FOR:
HOMESTAKE MINING COMPANY OF CALIFORNIA (BARRICK)
P. O. Box 980
ELKO, NV 89830

PREPARED BY:
IINÁ BÁ, INC.
1812 SCHOFIELD LANE
FARMINGTON, NM 87401
www.iinábá.com
PHONE: (505) 327-1072
FAX: (505) 327-1517
JUNE 2018



TABLE 1: ABANDONED URANIUM MINE HAZARDS SUMMARY



FORMER HOMESTAKE MINING COMPANY SITES
Smith Lake and Mariano Lake Chapters, McKinley County, New Mexico
Barrick Purchase Order No. 111010/O
iiná bá, Inc. Project No. – 17-001-03

Site Name	Site Feature	Latitude	Longitude	Observed Hazards	Significant Hazards Identified	Description of Significant Hazards	Corrective Measure
Black Jack No. 1	Ore Pad/Slab	35° 32' 43.70"N	108° 10' 6.99"W	Slip-trip-fall, metal objects penetrating slab	Yes	Sharp metal edges with laceration/puncture potential	Cut metal edges flush with surface
	Concrete Slab (Windmill)	35° 32' 43.72"N	108° 10' 6.64"W	Slip-trip-fall, metal objects penetrating slab	Yes	Sharp metal edges with laceration/puncture potential	Cut metal edges flush with surface
	Concrete Slab (S1)	35° 32' 45.44"N	108° 10' 11.75"W	Slip-trip-fall, metal objects penetrating slab	Yes	Sharp metal edges with laceration/puncture potential	Cut metal edges flush with surface
	Concrete Slab (S2)	35° 32' 46.51"N	108° 10' 11.57"W	Slip-trip-fall, metal objects penetrating slab	Yes	Sharp metal edges with laceration/puncture potential	Cut metal edges flush with surface
	Concrete Slab (S3)	35° 32' 47.09"N	108° 10' 10.79"W	Slip-trip-fall, metal objects penetrating slab	Yes	Sharp metal edges with laceration/puncture potential	Cut metal edges flush with surface
	Concrete Slab (Hoist House)	35° 32' 45.12"N	108° 10' 5.57"W	Slip-trip-fall, metal objects penetrating slab	Yes	Open pits in floor, sharp metal edges with laceration/puncture potential	Fill/cover open pits, cut metal edges flush with surface
	Concrete Slab (SL9)	35° 32' 45.40"N	108° 10' 2.98"W	Slip-trip-fall, metal objects penetrating slab	Yes	Sharp metal edges with laceration/puncture potential	Cut metal edges flush with surface

TABLE 1 continued: ABANDONED URANIUM MINE HAZARDS SUMMARY

FORMER HOMESTAKE MINING COMPANY SITES

Smith Lake and Mariano Lake Chapters, McKinley County, New Mexico

Barrick Purchase Order No. 111010/O

iiná bá, Inc. Project No. – 17-001-03

Site Name	Site Feature	Latitude	Longitude	Observed Hazards	Significant Hazards Identified	Description of Significant Hazards	Corrective Measure
Black Jack No. 1	Vent Shaft (central)	35° 32' 46.20"N	108° 10' 1.50"W	Slip-trip-fall, metal objects penetrating hoist anchors	Yes	Sharp metal edges with laceration/puncture potential	Cut metal edges flush with surface
	Utility Raise (U2)	35° 32.73'N	108° 10.114'W	Slip-trip-fall, metal object above grade	Yes	Sharp metal edges with laceration/puncture potential	Cut metal edges flush with surface
	North Vent Shaft (NV)	35° 32' 44.93"N	108° 9' 51.20"W	Slip-trip-fall, subsided ground creating depression	Yes	Open trench/pit with bodily injury possible	Fill/cover (cap)
	Utility Raise (U4)	35° 32.750'N	108° 9.852'W	Slip-trip-fall	No	Not Applicable	Plug*
	Utility Raise (U5)	35° 32' 44.74"N	108° 10' 6.44"W	Slip-trip-fall, metal object above grade	Yes	Sharp metal edges with laceration/puncture potential	Remove metal from ground
	Utility Raise (Open Hole)	35° 32' 35.44"N	108° 9' 51.68"W	Slip-trip-fall	No	Not Applicable	Plug*
Black Jack No. 2	Mine Shaft (MI)	35° 31' 57.37"N	108° 15' 14.82"W	Slip-trip-fall, open pit	Yes	Open shaft with bodily injury and entrapment	Fill/cover (cap)
	Utility Raise (U1)	35° 31' 58.11"N	108° 15' 16.83"W	Slip-trip-fall, metal edges above grade	Yes	Sharp metal edges with laceration/puncture potential	Cut metal edges flush with surface
	Utility Raise (U2)	35° 31' 57.88"N	108° 15' 16.52"W	Slip-trip-fall, metal edges above grade, open hole	Yes	Sharp metal edges with laceration/puncture potential, leg/foot injury potential	Cut metal edges flush with surface, install plug

FORMER HOMESTAKE MINING COMPANY SITES

Smith Lake and Mariano Lake Chapters, McKinley County, New Mexico

Barrick Purchase Order No. 111010/O

iiná bá, Inc. Project No. – 17-001-03

Site Name	Site Feature	Latitude	Longitude	Observed Hazards	Significant Hazards Identified	Description of Significant Hazards	Corrective Measure
Black Jack No. 2	Diversion Channel	35° 32' 0.56"N	108° 15' 16.26"W	Slip-trip-fall, metal edges on exposed channel liner	Yes	Sharp metal edges with laceration/puncture potential	Remove exposed metal liner
	Utility Raise (U3)	35° 32' 9.69"N	108° 15' 20.37"W	Slip-trip-fall	No	Not Applicable	Plug*
MAC No. 1	Partially Buried Mine Shaft	35° 32' 35.01"N	108° 15' 56.77"W	Slip-trip-fall, deep open pit, metal edges exposed	Yes	Bodily injury or entrapment, laceration/puncture potential	Fill/cover/cap
	Service Building (B1)	35° 32' 36.18"N	108° 15' 57.67"W	Potential exposure to biohazard (fecal material)	Yes	Exposure to potential Hanta Virus	Keep structure locked and secured, place visible hazard warnings
	Hoist House (B2)	35° 32' 35.82"N	108° 15' 56.55"W	Slip-trip-fall, shallow open floor sumps with sharp metal protrusions, potential exposure to biohazard (fecal material)	Yes	Bodily injury with laceration/puncture potential, exposure to potential Hanta Virus	Keep structure locked and secured, place visible hazard warnings
	Concrete Slab (S2)	35° 32' 35.61"N	108° 15' 56.58"W	Slip-trip-fall, metal penetrations in slab	Yes	Laceration/puncture potential	Cut metal edges flush with surface
	Concrete Slab (S3)	35° 32' 35.70"N	108° 15' 56.56"W	Slip-trip-fall, metal penetrations in slab	Yes	Laceration/puncture potential	cut metal edges flush with surface
	Septic Tank (ST)	35° 32' 36.03"N	108° 15' 58.10"W	Slip-trip-fall, open cavity or pit	Yes	Potential leg/foot injury	Backfill/cover cavity (cap)

FORMER HOMESTAKE MINING COMPANY SITES
 Smith Lake and Mariano Lake Chapters, McKinley County, New Mexico
 Barrick Purchase Order No. 111010/O
iiná bá, Inc. Project No. – 17-001-03

Site Name	Site Feature	Latitude	Longitude	Observed Hazards	Significant Hazards Identified	Description of Significant Hazards	Corrective Measure
MAC No. 2	Mine Waste (debris) Pile (W3)	35° 31' 37.86"N	108° 14' 50.26"W	Slip-trip-fall, exposed sharp metal edges (rusty)	Yes	Laceration/puncture potential	Fence off pile until characterized
	Mine Waste Pile (W2)	35° 31' 38.98"N	108° 14' 48.38"W	Slip-trip-fall, exposed metal rods	Yes	Laceration/puncture potential	Cut metal edges flush with surface or remove
	Concrete Slab (S1)	35° 31' 35.99"N	108° 14' 47.46"W	Slip-trip-fall, exposed metal with sharp edges	Yes	Laceration/puncture potential	Cut metal edges flush with surface
	Concrete Slab (S2)	35° 31' 35.68"N	108° 14' 47.55"W	Slip-trip-fall, exposed metal with sharp edges	Yes	Laceration/puncture potential	Cut metal edges flush with surface
	Open Hole (OH1)	35° 31' 37.00"N	108° 14' 50.00"W	Slip-trip-fall	Yes	Possible foot/leg injury	Fill/plug hole
	Open Hole (OH2)	35° 31' 37.00"N	108° 14' 50.00"W	Slip-trip-fall	Yes	Possible foot/leg injury	Fill/plug hole
	Vent Shaft-borehole (V1)	35° 32.781'N	108° 10.025'W	Slip-trip-fall	Yes	Possible foot/leg injury	Fill/plug hole

Footnotes:

*Feature is not considered a significant physical hazard, but was mitigated (plugged) this phase for potential Radon emission prior to other Phase 3 mitigation measures.

TABLE 2: BARRICK GOLD HAZARDS MITIGATION SIGN LOCATIONS

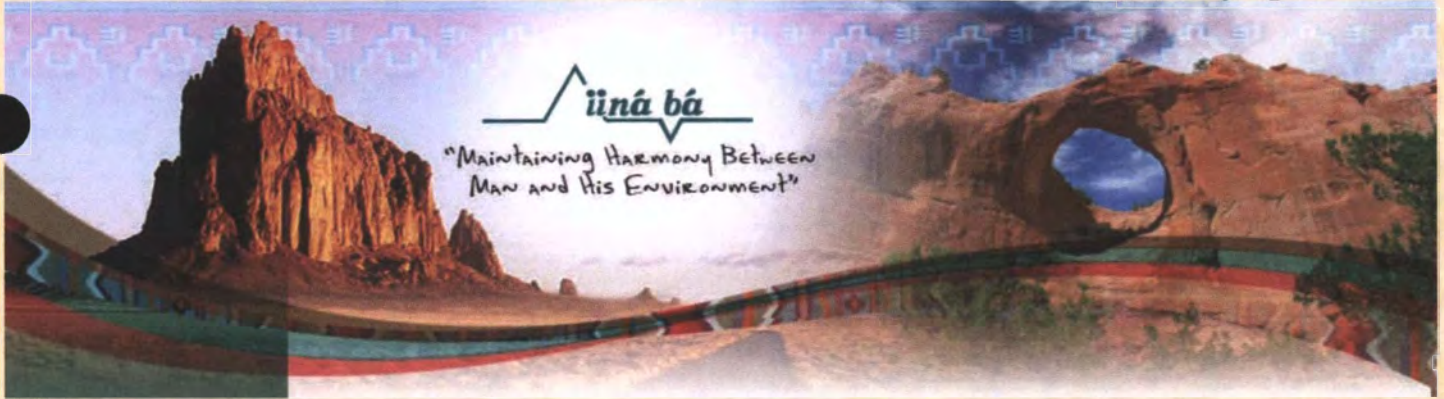
PROJECT : 17-001-03

COORDINATE SYSTEM: STATE PLANE COORDINATES, NM WEST, NAD 83

WGS 1984

LOCATION: ALL POINTS

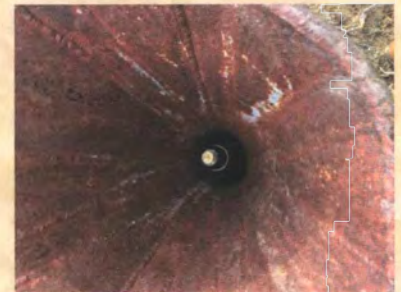
POINT	NORTHING	EASTING	LATITUDE	LONGITUDE	DESCRIPTION
100	1652739.91	2594143.23	35 32 29.92223	108 16 00.43466	SIGN POST
101	1652944.96	2594930.55	35 32 31.98440	108 15 50.91823	SIGN POST
102	1653763.37	2594822.54	35 32 40.07410	108 15 52.26854	SIGN POST
103	1653663.50	2594049.96	35 32 39.05289	108 16 01.61254	SIGN POST
104	1654212.20	2593188.13	35 32 44.44206	108 16 12.07121	SIGN POST
105	1653721.13	2593402.24	35 32 39.59456	108 16 09.45385	SIGN POST
106	1653129.09	2593793.79	35 32 33.75614	108 16 04.68391	SIGN POST
107	1648882.99	2596618.04	35 31 51.88239	108 15 30.28586	SIGN POST
108	1649605.70	2596809.64	35 31 59.03852	108 15 28.00526	SIGN POST
109	1650404.07	2598308.89	35 32 06.99814	108 15 09.90606	SIGN POST
110	1650830.05	2597422.33	35 32 11.17383	108 15 20.65550	SIGN POST
111	1651111.15	2599174.75	35 32 14.02779	108 14 59.46524	SIGN POST
112	1649716.75	2598878.20	35 32 00.22419	108 15 02.98218	SIGN POST
113	1648822.42	2598390.26	35 31 51.35839	108 15 08.84011	SIGN POST
114	1647903.60	2598707.82	35 31 42.28418	108 15 04.95071	SIGN POST
115	1647417.14	2599102.07	35 31 37.48945	108 15 00.15583	SIGN POST
116	1647750.36	2599579.31	35 31 40.80506	108 14 54.39871	SIGN POST
117	1648163.34	2599564.23	35 31 44.88892	108 14 54.60226	SIGN POST
118	1648778.67	2599803.80	35 31 50.98476	108 14 51.73489	SIGN POST
119	1649312.57	2600184.34	35 31 56.28104	108 14 47.15771	SIGN POST
120	1648783.58	2600608.86	35 31 51.06669	108 14 41.99454	SIGN POST
121	1647497.36	2600603.38	35 31 38.34519	108 14 41.99583	SIGN POST
122	1646905.10	2600271.18	35 31 32.47377	108 14 45.98503	SIGN POST
123	1646387.46	2599615.09	35 31 27.32688	108 14 53.89649	SIGN POST
124	1652576.81	2622052.12	35 32 29.39171	108 10 22.70200	SIGN POST
125	1653331.33	2621966.30	35 32 36.85128	108 10 23.77195	SIGN POST
126	1653800.53	2621746.07	35 32 41.48437	108 10 26.45669	SIGN POST
127	1654417.33	2622123.79	35 32 47.59777	108 10 21.91146	SIGN POST
128	1655169.71	2622036.18	35 32 55.03613	108 10 23.00310	SIGN POST
129	1655022.92	2622911.61	35 32 53.61407	108 10 12.40238	SIGN POST
130	1654974.52	2623698.37	35 32 53.16181	108 10 02.87900	SIGN POST
131	1655009.66	2624729.79	35 32 53.54374	108 09 50.39823	SIGN POST
132	1654189.08	2625203.61	35 32 45.44349	108 09 44.63084	SIGN POST
133	1653475.46	2625244.07	35 32 38.38687	108 09 44.11240	SIGN POST
134	1652856.37	2625512.99	35 32 32.27258	108 09 40.83309	SIGN POST
135	1652664.29	2624595.63	35 32 30.34243	108 09 51.92640	SIGN POST
136	1651934.24	2623856.80	35 32 23.09731	108 10 00.83716	SIGN POST
137	1652274.64	2623382.75	35 32 26.44806	108 10 06.58755	SIGN POST
138	1652596.37	2622950.50	35 32 29.61556	108 10 11.83152	SIGN POST
139	1648544.43	2597470.10	35 31 48.57017	108 15 19.95899	SIGN POST



**APPENDIX 3 — PHOTOGRAPHIC DOCUMENTATION
PHASE 2 HAZARDS MITIGATION REPORT**

**FORMER BLACK JACK NOS. 1 & 2, AND MAC NOS. 1 & 2
SMITH LAKE AND MARIANO LAKE CHAPTERS, MCKINLEY COUNTY, NEW MEXICO**

PURCHASE ORDER No. 111010/0



**PREPARED FOR:
HOMESTAKE MINING COMPANY OF CALIFORNIA (BARRICK)
P. O. BOX 980
ELKO, NV 89830**

**PREPARED BY:
IINÁ BÁ, INC.
1812 SCHOFIELD LANE
FARMINGTON, NM 87401
www.iinábá.com
PHONE: (505) 327-1072
FAX: (505) 327-1517
JUNE 2018**

PHOTOGRAPHIC DOCUMENTATION OF SITE ACTIVITIES
Phase 2 Physical Hazards Mitigation
Smith Lake and Mariano Lake Chapters, McKinley County, New Mexico

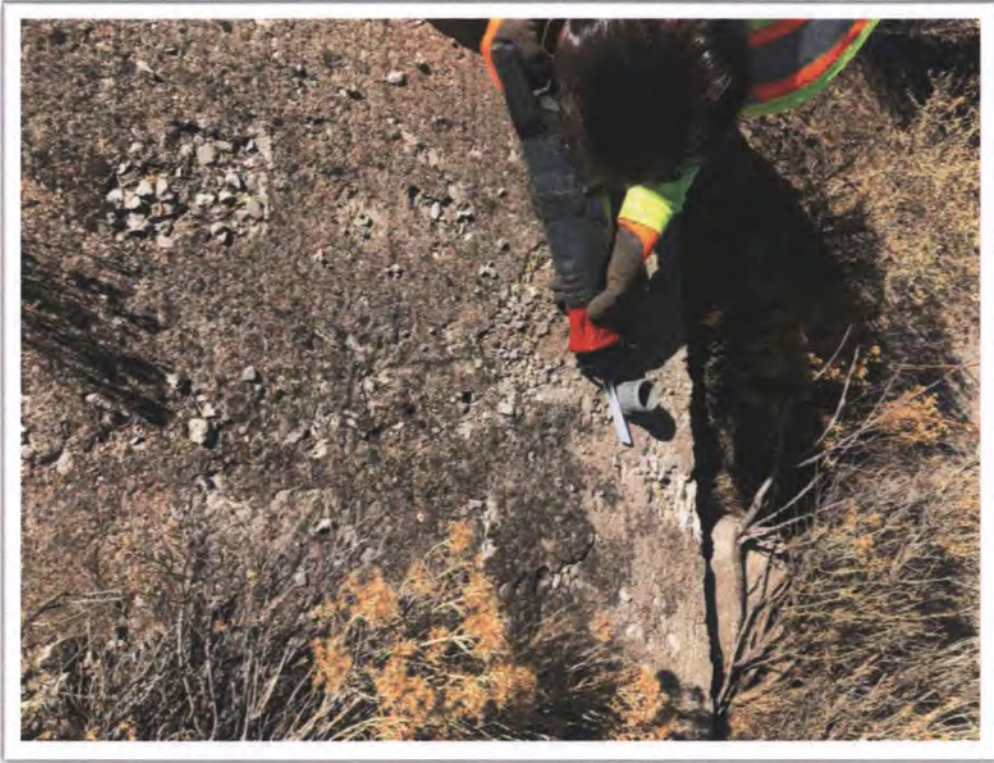


Photographed by: John R. Isham, CPG, Antonita Nunes, Lemuel Spean (*iiná bá, Inc.*)

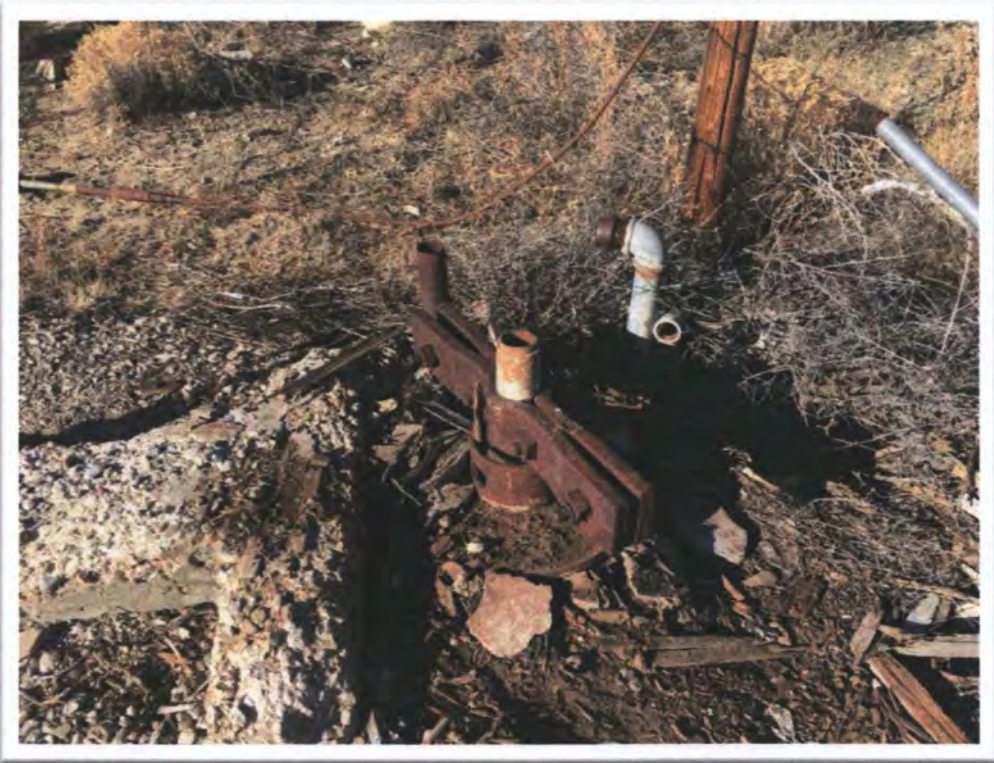
Photograph Period: November 2017 to June 2018

Barrick Contract: 111011/O

Contract Owner: Homestake Mining Company of California (Barrick Gold)



Photograph 1: View of typical cutting of metal protrusions flush with concrete slab at Ore Pad/Slab at Black Jack No. 1.



Photograph 2: View of typical cutting of anchor bolts flush with concrete slab at windmill concrete slab at Black Jack No. 1.



Photograph 3: View of typical cutting of wall anchor bolts flush with concrete slab at S1.



Photograph 4: View of typical cutting of wall anchor bolts flush with concrete slab at S2.



Photograph 5: View of typical wall anchor bolt cut flush with concrete slab at S3.



Photograph 6: View of typical Hoist House anchor bolts cut flush with concrete at Black Jack No. 1.



Photograph 7: View of typical placement of flowable fill into pits of Hoist House at Black Jack No. 1.



Photograph 8: View of typical wall anchor bolts cut flush with concrete slab at SL9 at Black Jack No. 1.



Photograph 9: View of typical cutting of hoist anchor bolts flush with concrete at central Vent Shaft at Black Jack No. 1.



Photograph 10: View of typical cutting of "T"-handle at Utility Raise (U2) at Black Jack No. 1.



Photograph 11: View of typical backfilling, compaction, and grading at North Vent Shaft (NV) at Black Jack No. 1.



Photograph 12: View of typical inflatable hole plug installed in Open Hole (HS) and Utility Raise U4 at Black Jack No. 1.



Photograph 13: View of typical inflatable packer (hole plug) installed in Utility Raise U4 at Black Jack No. 1.



Photograph 14: View of typical removal of sharp metal feature with backfilling and compact on at Utility Raise U5 at Black Jack No. 1.



Photograph 15: View of typical flowable fill placement in Mine Shaft (MI) at Black Jack No. 2.



Photograph 16: View of typical backfilling and covering Utility Raise U1 at Black Jack No. 2



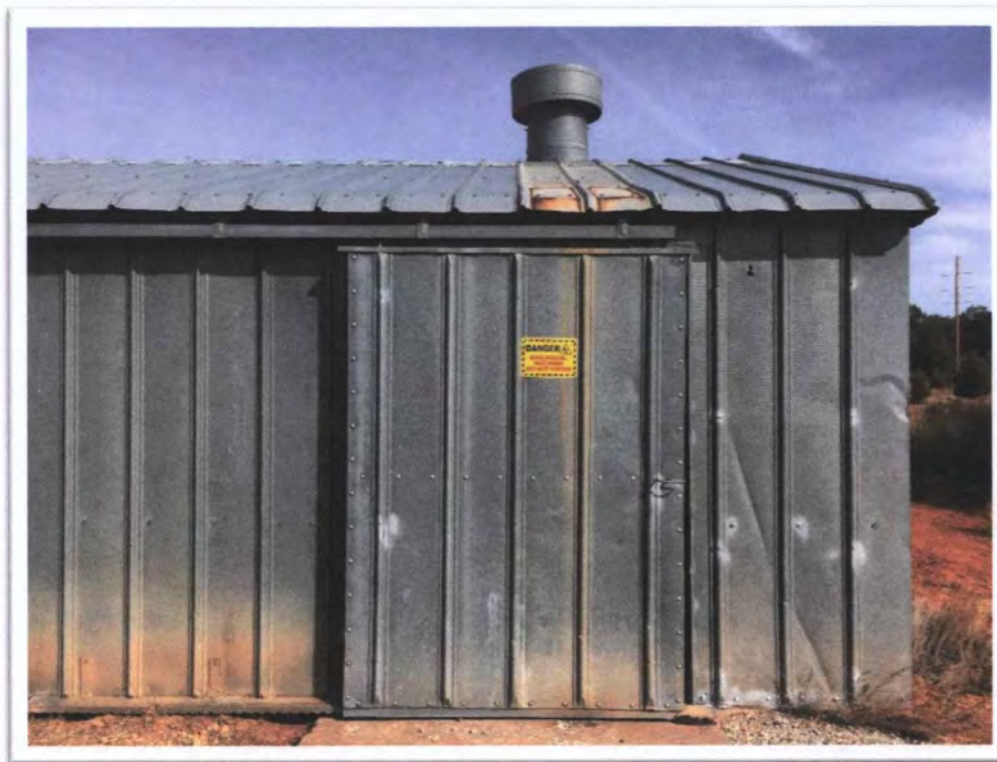
Photograph 17: View of typical plugging and sealing Utility Raise U2 at Black Jack No. 2.



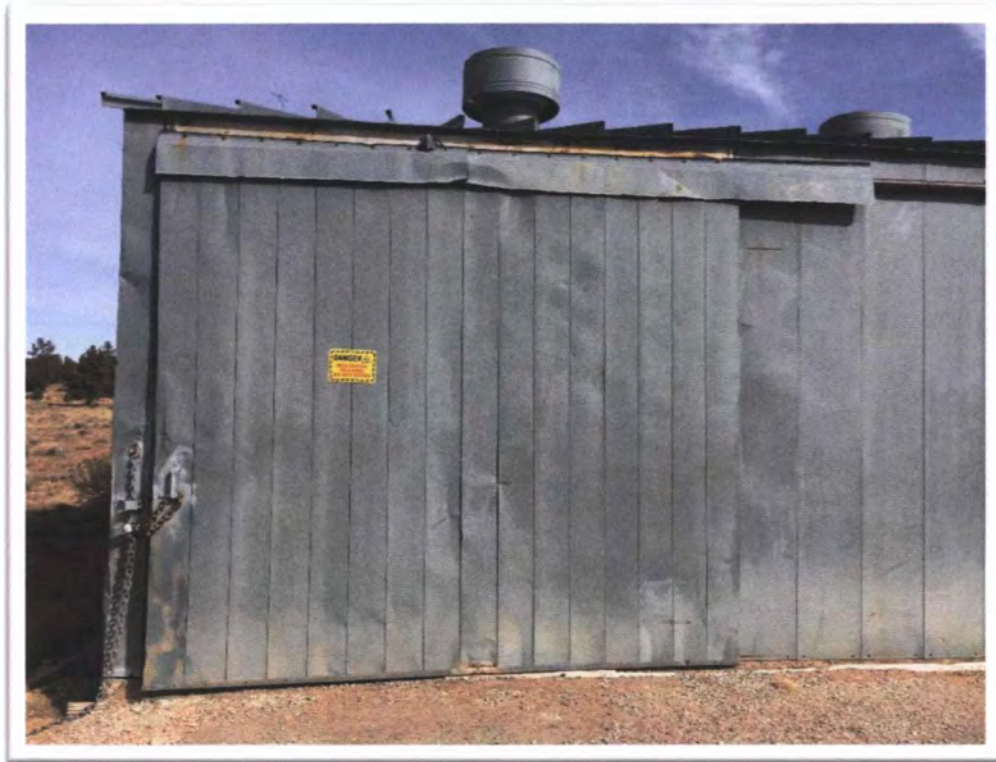
Photograph 18: View of typical diversion channel removal at Black Jack No. 2.



Photograph 19: View of typical backfilling, compaction, and grading of partially Buried Mine Shaft at MAC No. 1.



Photograph 20: View of typical Biohazard sign installation (front and rear) on Service Building (B1) at MAC No. 1



Photograph 21: View of typical Biohazard sign installation (front and rear) on Hoist House at MAC No. 1.



Photograph 22: View of typical cutting of sharp metal surface flush with concrete slab (S2) at MAC No. 1.



Photograph 24: View of typical cutting of sharp metal surface flush with concrete slab (S3) at MAC No. 1.



Photograph 24: View of typical backfilling, compaction, and grading of septic tank hazard at MAC No. 1.



Photograph 25: View of typical fence installation around Mine Waste (debris) Pile (W3) at MAC No. 2.



Photograph 26: View of typical backfilling, compaction, and grading of Open Hole (OH1) at MAC No. 2.



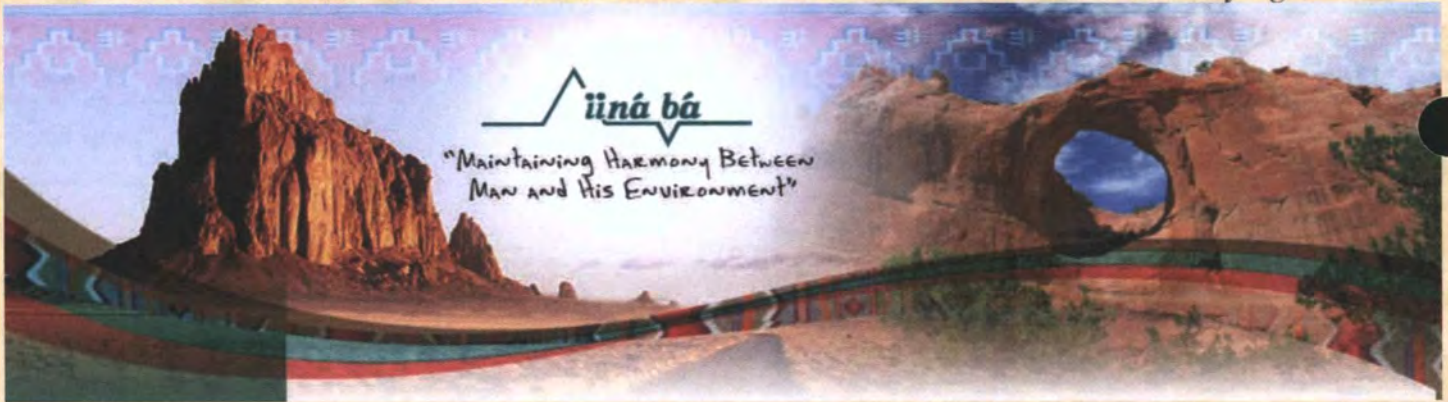
Photograph 27: View of typical backfilling, compaction, and grading at Open Hole (OH2) at MAC No. 2.



Photograph 28: View of typical backfilling, compaction, and grading at Vent Shaft-Borehole at MAC No. 2.



Photograph 29: View of new fencing installed around Mine Shaft (MK) at Black Jack No. 2.



**APPENDIX 4 — SUPPORTING DOCUMENTATION
PHASE 2 HAZARDS MITIGATION REPORT
FORMER BLACK JACK NOS. 1 & 2, AND MAC NOS. 1 & 2
SMITH LAKE AND MARIANO LAKE CHAPTERS, MCKINLEY COUNTY, NEW MEXICO**

PURCHASE ORDER No. 111010/0



**PREPARED FOR:
HOMESTAKE MINING COMPANY OF CALIFORNIA (BARRICK)
P. O. BOX 980
ELKO, NV 89830**

**PREPARED BY:
IINÁ BÁ, INC.
1812 SCHOFIELD LANE
FARMINGTON, NM 87401
www.iinábá.com
PHONE: (505) 327-1072
FAX: (505) 327-1517
JUNE 2018**



iiná bá, Inc.

ENVIRONMENTAL | ENGINEERING | SURVEYING | CONSTRUCTION

Job Site Safety Meeting Form

It is the expressed policy of iiná bá to conduct a safety meeting with all personnel on the jobsite prior to beginning any work. Where applicable the Supervisor will conduct the safety meeting and prepare the form. All safety meetings will comply with Tribal, State and Federal regulations and any safety procedures issued by the client.

Date: 11/28/2017 Time: 09:25 Job Number: 17-001-03

Location: SMITH LAKE, NM Client: BARRICK/Homestake

Type of work to be performed: REMOVAL OF PHYSICAL SITE HAZARDS

JOHN R. ISHAM
iiná bá supervisor (Print Name) (Signature)

- Hand, Eye and Head Safety Slip, Trip and Fall Heavy Equipment Operation
- Heat and Cold Stress Fire/Explosion Confined Space
- Trench Safety Inhalation Hazards Noise
- Underground Hazards Overhead Hazards Contaminated Soils/Liquids
- High Pressure Petroleum Chemical Exposure Pipeline Safety
- Welding Safety Insect, Pests Chemical /HAZMAT Exposure

Other: RECIP SAW SAFETY, GENERATOR

	Coverall	Hardhat	Gloves	Safety boots	NOMEX	Hearing protection	Safety Glasses	Level C	Level B	Level A	Note
Personal Protective Equipment											
Daily Routine											
Sampling			X	X		X					SAFETY VESTS
Asbestos Abatement											
Excavation											
Facility Inventory											
Chemical Inventory											
Drilling Operations											
Emergency Response											
Above/Underground Storage Tank Removal											

Other equipment/permit requirements: _____

Emergency Assembly Area: OUTSIDE FENCE ON ACCESS ROAD

Who to call in an Emergency: 911

Name: (print) Antonio Nones Signature: [Signature] Company: _____



iiná bá, Inc.

ENVIRONMENTAL | ENGINEERING | SURVEYING | CONSTRUCTION

Job Site Safety Meeting Form

It is the expressed policy of iiná bá to conduct a safety meeting with all personnel on the jobsite prior to beginning any work. Where applicable the Supervisor will conduct the safety meeting and prepare the form. All safety meetings will comply with Tribal, State and Federal regulations and any safety procedures issued by the client.

Date: 11/29/2017 Time: 09:00 Job Number 17-001-03

Location: SMITH LAKE, NM Client: BARRICK

Type of work to be performed: REMOVE PHYSICAL HAZARDS

JOHN R ISHAM [Signature]
iiná bá supervisor (Print Name) (Signature)

- Hand, Eye and Head Safety
- Heat and Cold Stress
- Trench Safety
- Underground Hazards
- High Pressure Petroleum
- Welding Safety
- Slip, Trip and Fall
- Fire/Explosion
- Inhalation Hazards
- Overhead Hazards
- Chemical Exposure
- Insect, Pests
- Heavy Equipment Operation
- Confined Space
- Noise
- Contaminated Soils/Liquids
- Pipeline Safety
- Chemical /HAZMAT Exposure

Other: AIR COMPRESSOR, GENERATOR

	Coverall	Hardhat	Gloves	Safety boots	NOMEX	Hearing protection	Safety Glasses	Level C	Level B	Level A	Note
Personal Protective Equipment											
Daily Routine											
Sampling			<input checked="" type="checkbox"/>	<input checked="" type="checkbox"/>		<input checked="" type="checkbox"/>					<u>SAFETY VESTS</u>
Asbestos Abatement											
Excavation											
Facility Inventory											
Chemical Inventory											
Drilling Operations											
Emergency Response											
Above/Underground Storage Tank Removal											

Other equipment/permit requirements: _____

Emergency Assembly Area: OUTSIDE FENCE GATE

Who to call in an Emergency: 911

Name (print): Antonita Ninos

Signature: [Signature]

Company: iinaba

Maintaining Harmony Between Man and His Environment

iiná bá, Inc. 4801 N. Butler Ave. suite 1101 Farmington, NM 87401 PO Box 2606 Farmington, NM 87499
Phone: (505) 327-1072 Fax: (505) 327-1517
www.iinaba.com



iiná bá, Inc.

ENVIRONMENTAL | ENGINEERING | SURVEYING | CONSTRUCTION

Job Site Safety Meeting Form

It is the expressed policy of *iiná bá* to conduct a safety meeting with all personnel on the jobsite prior to beginning any work. Where applicable the Supervisor will conduct the safety meeting and prepare the form. All safety meetings will comply with Tribal, State and Federal regulations and any safety procedures issued by the client.

Date: 12/2/17 Time: 0900 Job Number: 17-001-03

Location: SMITH LAKE, NM Client: BARRICK / USEPA

Type of work to be performed: BACKFILL VENT SHAFTS, CUT OFF PUNCTURE HAZARDS

JOHN R. ISHAM
iiná bá supervisor (Print Name) (Signature)

- | | | | | | |
|-------------------------------|-------------------------------------|---------------------|-------------------------------------|----------------------------|-------------------------------------|
| Hand, Eye and Head Safety | <input checked="" type="checkbox"/> | Slip, Trip and Fall | <input checked="" type="checkbox"/> | Heavy Equipment Operation | <input checked="" type="checkbox"/> |
| Heat and Cold Stress | <input type="checkbox"/> | Fire/Explosion | <input type="checkbox"/> | Confined Space | <input type="checkbox"/> |
| Trench Safety | <input type="checkbox"/> | Inhalation Hazards | <input type="checkbox"/> | Noise | <input checked="" type="checkbox"/> |
| Underground Hazards | <input type="checkbox"/> | Overhead Hazards | <input type="checkbox"/> | Contaminated Soils/Liquids | <input type="checkbox"/> |
| High Pressure Petroleum | <input type="checkbox"/> | Chemical Exposure | <input type="checkbox"/> | Pipeline Safety | <input type="checkbox"/> |
| Welding Safety <u>CUTTING</u> | <input checked="" type="checkbox"/> | Insect, Pests | <input type="checkbox"/> | Chemical /HAZMAT Exposure | <input type="checkbox"/> |

Other: _____

	Coverall	Hardhat	Gloves	Safety boots	NOMEX	Hearing protection	Safety Glasses	Level C	Level B	Level A	Note
Personal Protective Equipment											
Daily Routine			<input checked="" type="checkbox"/>	<input checked="" type="checkbox"/>			<input checked="" type="checkbox"/>				<u>SAFETY VESTS</u>
Sampling											
Asbestos Abatement											
Excavation											
Facility Inventory											
Chemical Inventory											
Drilling Operations											
Emergency Response											
Above/Underground Storage Tank Removal											

Other equipment/permit requirements: CUTTING FOURCH

Emergency Assembly Area: OUTSIDE FACILITY GATES

Who to call in an Emergency: 911

Name: (print) Joseph S Roberts Signature: [Signature] Company: iiná bá, Inc.
DUANE ASPRAS _____ [Signature] _____ iiná bá, Inc.

Maintaining Harmony Between Man and His Environment



iiná bá, Inc.

ENVIRONMENTAL | ENGINEERING | SURVEYING | CONSTRUCTION

Job Site Safety Meeting Form

It is the expressed policy of *iiná bá* to conduct a safety meeting with all personnel on the jobsite prior to beginning any work. Where applicable the Supervisor will conduct the safety meeting and prepare the form. All safety meetings will comply with Tribal, State and Federal regulations and any safety procedures issued by the client.

Date: 12-4-17 Time: 9:10 AM Job Number: 17-001-03
 Location: Black Jack NO2 Smith Client: Bayrick
 Type of work to be performed: Lake Cement fill - mine shaft

<i>iiná bá</i> supervisor (Print Name)		(Signature)
Hand, Eye and Head Safety	<input checked="" type="checkbox"/>	Slip, Trip and Fall
Heat and Cold Stress	<input checked="" type="checkbox"/>	Fire/Explosion
Trench Safety	<input type="checkbox"/>	Inhalation Hazards
Underground Hazards	<input type="checkbox"/>	Overhead Hazards
High Pressure Petroleum	<input type="checkbox"/>	Chemical Exposure
Welding Safety	<input type="checkbox"/>	Insect, Pests
		Heavy Equipment Operation
		Confined Space
		Noise
		Contaminated Soils/Liquids
		Pipeline Safety
		Chemical /HAZMAT Exposure

Other: _____

	Coverall	Hardhat	Gloves	Safety boots	NOMEX	Hearing protection	Safety Glasses	Level C	Level B	Level A	Note
Personal Protective Equipment											
Daily Routine			<input checked="" type="checkbox"/>	<input checked="" type="checkbox"/>		<input checked="" type="checkbox"/>	<input checked="" type="checkbox"/>				
Sampling											
Asbestos Abatement											
Excavation											
Facility Inventory											
Chemical Inventory											
Drilling Operations											
Emergency Response											
Above/Underground Storage Tank Removal											

Other equipment/permit requirements: _____
 Emergency Assembly Area: Black Jack NO2 Host House
 Who to call in an Emergency: John Isham

Name (print): Antonita Nung Signature: [Signature] Company: 12-4-17



iiná bá, Inc.

Job Site Safety Meeting Form

It is the expressed policy of iiná bá to conduct a safety meeting with all personnel on the jobsite prior to beginning any work. Where applicable the Supervisor will conduct the safety meeting and prepare the form. All safety meetings will comply with Tribal, State and Federal regulations and any safety procedures issued by the client.

Date: Dec 5, 2017 Time: 9:20 AM Job Number: 17-001-03

Location: Black Jack NO 2 Client: Barrick

Type of work to be performed: Top off fill at mine shaft

iiná bá supervisor (Print Name)

(Signature)

- Hand, Eye and Head Safety
- Heat and Cold Stress
- Trench Safety
- Underground Hazards
- High Pressure Petroleum
- Welding Safety

- Slip, Trip and Fall
- Fire/Explosion
- Inhalation Hazards
- Overhead Hazards
- Chemical Exposure
- Insect, Pests

- Heavy Equipment Operation
- Confined Space
- Noise
- Contaminated Soils/Liquids
- Pipeline Safety
- Chemical /HAZMAT Exposure

Other: _____

	Coverall	Hardhat	Gloves	Safety boots	NOMEX	Hearing protection	Safety Glasses	Level C	Level B	Level A	Note
Personal Protective Equipment											
Daily Routine											
Sampling		X	X	X			X				
Asbestos Abatement											
Excavation											
Facility Inventory											
Chemical Inventory											
Drilling Operations											
Emergency Response											
Above/Underground Storage Tank Removal											

Other equipment/permit requirements: _____

Emergency Assembly Area: Black Jack NO 2 site

Who to call in an Emergency: John Isham

Name: (print) Antonita Nuxes

Signature [Signature]

Company iinaba, INC.

Name: (print)

Signature

Company



iiná bá, Inc.

ENVIRONMENTAL | ENGINEERING | SURVEYING | CONSTRUCTION

Job Site Safety Meeting Form

It is the expressed policy of iiná bá to conduct a safety meeting with all personnel on the jobsite prior to beginning any work. Where applicable the Supervisor will conduct the safety meeting and prepare the form. All safety meetings will comply with Tribal, State and Federal regulations and any safety procedures issued by the client.

Date: DEC. 28, 2018 Time: 0930 Job Number: 17-001-03
Location: SAMPLE WATER WELLS AT MINE SITES Client: BARRICK

Type of work to be performed: SAMPLE WATER WELLS AT MINE SITES
iiná bá supervisor (Print Name): JOHN R. ISHAM (Signature): John R. Isha

- Hand, Eye and Head Safety
- Heat and Cold Stress
- Trench Safety
- Underground Hazards
- High Pressure Petroleum
- Welding Safety
- Slip, Trip and Fall
- Fire/Explosion
- Inhalation Hazards
- Overhead Hazards
- Chemical Exposure
- Insect, Pests
- Heavy Equipment Operation
- Confined Space
- Noise
- Contaminated Soils/Liquids
- Pipeline Safety
- Chemical /HAZMAT Exposure

Other: CUTTING TOOLS

	Coverall	Hardhat	Gloves	Safety boots	NOMEX	Hearing protection	Safety Glasses	Level C	Level B	Level A	Note
Personal Protective Equipment											
Daily Routine											
Sampling			X	X		X					SAFETY VESTS
Asbestos Abatement											
Excavation											
Facility Inventory											
Chemical Inventory											
Drilling Operations											
Emergency Response											
Above/Underground Storage Tank Removal											

Other equipment/permit requirements: GENERATOR
Emergency Assembly Area: OUTSIDE GATE
Who to call in an Emergency: 911

Name: (print) Sheena Leon Signature: Sheena Leon Company: iinaba, Inc
Antoneta Nunes Antoneta Nunes iinaba, INC



iiná bá, Inc.

ENVIRONMENTAL | ENGINEERING | SURVEYING | CONSTRUCTION

BLACK JACK MINE #1

Job Site Safety Meeting Form

It is the expressed policy of iiná bá to conduct a safety meeting with all personnel on the jobsite prior to beginning any work. Where applicable the Supervisor will conduct the safety meeting and prepare the form. All safety meetings will comply with Tribal, State and Federal regulations and any safety procedures issued by the client.

Date: JAN 29 '12

Time: 9am

Job Number: 17-001-03

Location: SMITH LAKE

Client: Homestake Mining

Type of work to be performed: land survey - locate & SET Fence Post with Warning Signs

Ted Campbell

Ted Campbell

iiná bá supervisor (Print Name)

(Signature)

- | | | | | | |
|---------------------------|-------------------------------------|---------------------|-------------------------------------|----------------------------|-------------------------------------|
| Hand, Eye and Head Safety | <input checked="" type="checkbox"/> | Slip, Trip and Fall | <input checked="" type="checkbox"/> | Heavy Equipment Operation | <input type="checkbox"/> |
| Heat and Cold Stress | <input type="checkbox"/> | Fire/Explosion | <input type="checkbox"/> | Confined Space | <input type="checkbox"/> |
| Trench Safety | <input type="checkbox"/> | Inhalation Hazards | <input checked="" type="checkbox"/> | Noise | <input type="checkbox"/> |
| Underground Hazards | <input checked="" type="checkbox"/> | Overhead Hazards | <input type="checkbox"/> | Contaminated Soils/Liquids | <input checked="" type="checkbox"/> |
| High Pressure Petroleum | <input type="checkbox"/> | Chemical Exposure | <input type="checkbox"/> | Pipeline Safety | <input type="checkbox"/> |
| Welding Safety | <input type="checkbox"/> | Insect, Pests | <input type="checkbox"/> | Chemical /HAZMAT Exposure | <input type="checkbox"/> |

Other: _____

	Coverall	Hardhat	Gloves	Safety boots	NOMEX	Hearing protection	Safety Glasses	Level C	Level B	Level A	Note
Personal Protective Equipment											
Daily Routine			X	X							
Sampling											
Asbestos Abatement											
Excavation											
Facility Inventory											
Chemical Inventory											
Drilling Operations											
Emergency Response											
Above/Underground Storage Tank Removal											

Other equipment/permit requirements: _____

Emergency Assembly Area: _____

Who to call in an Emergency: _____

Name: (print)

Signature

Company

Ted Campbell

Ted Campbell

iiná bá Inc

LEMUEL SPAN

L.S.P.

IINA BA INC

Maintaining Harmony Between Man and His Environment

iiná bá, Inc. 4801 N. Butler Ave. suite 1101 Farmington, NM 87401 PO Box 2606 Farmington, NM 87499

Phone: (505) 327-1072 Fax: (505) 327-1517

www.iinaba.com



iiná bá, Inc.

ENVIRONMENTAL | ENGINEERING | SURVEYING | CONSTRUCTION

BLACK JACK MINE #2
M&C #1 MINE

Job Site Safety Meeting Form

It is the expressed policy of *iiná bá* to conduct a safety meeting with all personnel on the jobsite prior to beginning any work. Where applicable the Supervisor will conduct the safety meeting and prepare the form. All safety meetings will comply with Tribal, State and Federal regulations and any safety procedures issued by the client.

Date: Jan 30 '10 Time: 2:30 Job Number: 17-001-03

Location: SMITH LAKE ; MARICANO CHAPTER Client: HOMESTEAKE MOUNTING

Type of work to be performed: locate ; Set Fence Post With Warning Sign (SURVEY)

Ted Charles Ted Charles
iiná bá supervisor (Print Name) (Signature)

- | | | |
|---|---|--|
| Hand, Eye and Head Safety <input checked="" type="checkbox"/> | Slip, Trip and Fall <input checked="" type="checkbox"/> | Heavy Equipment Operation <input type="checkbox"/> |
| Heat and Cold Stress <input type="checkbox"/> | Fire/Explosion <input type="checkbox"/> | Confined Space <input type="checkbox"/> |
| Trench Safety <input type="checkbox"/> | Inhalation Hazards <input checked="" type="checkbox"/> | Noise <input type="checkbox"/> |
| Underground Hazards <input checked="" type="checkbox"/> | Overhead Hazards <input type="checkbox"/> | Contaminated Soils/Liquids <input checked="" type="checkbox"/> |
| High Pressure Petroleum <input type="checkbox"/> | Chemical Exposure <input type="checkbox"/> | Pipeline Safety <input type="checkbox"/> |
| Welding Safety <input type="checkbox"/> | Insect, Pests <input type="checkbox"/> | Chemical /HAZMAT Exposure <input type="checkbox"/> |

Other: _____

	Coverall	Hardhat	Gloves	Safety boots	NOMEX	Hearing protection	Safety Glasses	Level C	Level B	Level A	Note
Personal Protective Equipment											
Daily Routine			X	X							
Sampling											
Asbestos Abatement											
Excavation											
Facility Inventory											
Chemical Inventory											
Drilling Operations											
Emergency Response											
Above/Underground Storage Tank Removal											

Other equipment/permit requirements: _____

Emergency Assembly Area: _____

Who to call in an Emergency: _____

Name: (print)	Signature	Company
<u>Hy YAZZIE</u>	<u>[Signature]</u>	<u>iiná bá Inc</u>
<u>Ted Charles</u>	<u>[Signature]</u>	<u>iiná bá Inc</u>
<u>L.H. [Signature]</u>	<u>[Signature]</u>	<u>IINA BA INC</u>



iiná bá, Inc.

ENVIRONMENTAL | ENGINEERING | SURVEYING | CONSTRUCTION

MAC #2 MINE

Job Site Safety Meeting Form

It is the expressed policy of *iiná bá* to conduct a safety meeting with all personnel on the jobsite prior to beginning any work. Where applicable the Supervisor will conduct the safety meeting and prepare the form. All safety meetings will comply with Tribal, State and Federal regulations and any safety procedures issued by the client.

Date: JAN 31 '18 Time: 9am Job Number: 17-001-03

Location: SMITH LAKE ? MARICOPA CHAPTER Client: HOME STAKE MINING

Type of work to be performed: LAND SURVEY - LOCATE & SET FENCE POST WITH WARNING SIGN

Ted Campbell Ted Campbell
iiná bá supervisor (Print Name) (Signature)

- | | | | | | |
|---------------------------|-------------------------------------|---------------------|-------------------------------------|----------------------------|-------------------------------------|
| Hand, Eye and Head Safety | <input checked="" type="checkbox"/> | Slip, Trip and Fall | <input checked="" type="checkbox"/> | Heavy Equipment Operation | <input type="checkbox"/> |
| Heat and Cold Stress | <input type="checkbox"/> | Fire/Explosion | <input type="checkbox"/> | Confined Space | <input type="checkbox"/> |
| Trench Safety | <input type="checkbox"/> | Inhalation Hazards | <input checked="" type="checkbox"/> | Noise | <input type="checkbox"/> |
| Underground Hazards | <input checked="" type="checkbox"/> | Overhead Hazards | <input type="checkbox"/> | Contaminated Soils/Liquids | <input checked="" type="checkbox"/> |
| High Pressure Petroleum | <input type="checkbox"/> | Chemical Exposure | <input type="checkbox"/> | Pipeline Safety | <input type="checkbox"/> |
| Welding Safety | <input type="checkbox"/> | Insect, Pests | <input type="checkbox"/> | Chemical /HAZMAT Exposure | <input type="checkbox"/> |

Other: _____

	Coverall	Hardhat	Gloves	Safety boots	NOMEX	Hearing protection	Safety Glasses	Level C	Level B	Level A	Note
Personal Protective Equipment											
Daily Routine			X	X							
Sampling											
Asbestos Abatement											
Excavation											
Facility Inventory											
Chemical Inventory											
Drilling Operations											
Emergency Response											
Above/Underground Storage Tank Removal											

Other equipment/permit requirements: _____

Emergency Assembly Area: _____

Who to call in an Emergency: _____

Name: (print)	Signature	Company
<u>Hy YAZZIE</u>	<u>[Signature]</u>	<u>uiná bá Inc</u>
<u>Ted Campbell</u>	<u>Ted Campbell</u>	<u>uiná bá Inc</u>
<u>LEMUEL SPEAR</u>	<u>[Signature]</u>	<u>IINABA INC</u>



MICHELE'S READYMIX ROCK & RECYCLE

Billing Address:

501 Patton • Gallup, New Mexico 87301

Plant Address

1661 Hasler Valley Road • Gallup, NM 87301

Batch Plant: 505-863-3818 • FAX 505-863-4720

DELIVERY TICKET

NO.003815

TEST RESULTS		In the event of delivery beyond the curb line, the undersigned assumes liability and responsibility for authorizing the truck(s) of MICHELE'S READYMIX ROCK & RECYCLE to travel on the job site premises of property adjacent thereto as a means of access to the discharge area and shall indemnify and hold harmless MICHELE'S READYMIX ROCK & RECYCLE and its employees from any loss, cost, damage, or expense in making delivery as authorized and directed.						LEAVE PLANT
SLUMP		This concrete will meet the specifications for the working strength marked on the delivery slip if properly poured and cured but is not otherwise warranted. MICHELE'S READYMIX ROCK & RECYCLE will not accept responsibility for the strength and consistency of any concrete to which water or other material has been added at the insistence of the Purchaser after it leaves the plant. Any sampling and testing of this concrete must be in strict accordance with ASTM procedures.						ARRIVE JOB
CONC. TEMP. AIR %		TERMS: Net due 30 days - 1 1/2% per month (18% per year) assessed on past due accounts. Purchaser agrees to pay all attorney fees and/or court costs as may be deemed reasonable in the event legal action becomes necessary to collect any outstanding balance.						FINISH POURING
CYLINDERS TAKEN <input type="checkbox"/> YES <input type="checkbox"/> NO		BY: <i>[Signature]</i>						LEAVE JOB
TESTED BY		ALLOWABLE UNLOADING TIME: 7 MINUTES PER CUBIC YARD.						ARRIVE PLANT
WATER ADDED AT CUSTOMER'S REQUEST		GALLONS		CUSTOMER SIGNATURE				
CUSTOMER ID	P.O. NUMBER	ZONE	TIME	DATE	TICKET			
11699			9:36 AM	11/30/17				
OLD TO		DELIVER TO		DRIVER				
LINA BA INC		Smithlake		LAWRENCE SAM				
				11599				
QUANTITY THIS LOAD	QUANTITY ORDERED	QUANTITY DELIVERED	PRODUCT CODE	PRODUCT DESCRIPTION	UNIT MEASURE	UNIT PRICE	EXTENDED PRICE	
10.00	10.00	10.00	32623101	1 SK FLOWFILL				
TRUCK	PLANT	SLUMP	DUE AT JOB	USE OF CONCRETE			SUB TOTAL	
6946	01	9.00in	10:30 AM				STATE TAX	
SCEL	AIR ENTRAIN	SUPER PLAS.	CAL. CHLORIDE	HOT WATER	RETARDER		COUNTY TAX	
			%	%			CITY TAX	
DELIVERY INSTRUCTIONS							TOTAL	
SPECIAL INSTRUCTIONS								

TEAR HERE

Truck	Driver	User	Disp	Ticket Num	Ticket ID	NO.003815
6946	75022	sa		3815	9:31 11/30/17	
Load Size	Mix Code	Returned	Qty	Mix Age	Seq	Load ID
10.00 yd	32623101				D	28730
Material	Design Qty	Required	Batched	% Var	% Moisture	Actual Mat
SA-CF	2566 lb	2567 lb	25820 lb	-0.11%	0.73% N	22 gl
CCC-1/II	79 lb	700 lb	695 lb	-0.71%		
4-CANRE	75 lb	750 lb	755 lb	0.67%		
WATER	50.0 gl	477.6 gl	477.0 gl	-0.12%		477.0 gl
Actual	Num Batches: 2				Manual 9:31:03	
Load total:	31251 lb	Design 2,878	Water/Cement 2,878 T		Design 500.0 gl	Actual 499.4 gl To Add: 0.6
Slump: 9.00 in	0 Water in Truck: 0.0 gl	Adjust Water: 0.0 gl	/ Load	Tris Water: 0.0 gl/ yd	Note: Manual feed ok	

48°



MICHELE'S READY MIX ROCK & RECYCLE

Billing Address:

501 Patton • Gallup, New Mexico 87301

Plant Address

1661 Hasler Valley Road • Gallup, NM 87301

Batch Plant: 505-863-3818 • FAX 505-863-4720

DELIVERY TICKET

NO.003894

TEST RESULTS	If the driver is to be beyond the curb line, the undersigned assumes liability and responsibility for authorizing the truck(s) of MICHELE'S READY MIX ROCK & RECYCLE to travel on the job site premises of property adjacent thereto as a means of access to the site. The undersigned hereby indemnifies and holds harmless MICHELE'S READY MIX ROCK & RECYCLE and its employees from any loss, cost, damage, or expense in making delivery as authorized and directed.					LEAVE PLANT	
SLUMP						ARRIVE JOB	
CONC. TEMP.	AIR %	This concrete will meet the specifications for the working strength marked on the delivery slip if properly poured and cured but is not otherwise warranted. MICHELE'S READY MIX ROCK & RECYCLE will not accept responsibility for the strength and consistency of any concrete to which water or other material has been added at the insistence of the Purchaser after it leaves the plant. Any sampling and testing of this concrete must be in strict accordance with ASTM procedures.			FINISH POURING		
CYLINDERS TAKEN	<input type="checkbox"/> YES				LEAVE JOB		
TESTED BY	<input checked="" type="checkbox"/> NO	TERMS: Net due 30 days - 1 1/2% per month (18% per year) assessed on past due accounts. Purchaser agrees to pay all attorney fees and/or court costs as may be deemed reasonable in the event legal action becomes necessary to collect any outstanding balance.			ARRIVE PLANT		
WATER ADDED AT CUSTOMER'S REQUEST	<i>[Signature]</i>	BY: <i>[Signature]</i>	CUSTOMER SIGNATURE	ALLOWABLE UNLOADING TIME: 7 MINUTES PER CUBIC YARD.	TICKET		
CUSTOMER ID	P.O. NUMBER	ZONE	TIME	DATE			
OLD TO	11699	DELIVER TO	9:24	DRIVER	12/04/17		
IINA BA INC		Smithlake		LAWRENCE SAM			
QUANTITY THIS LOAD	QUANTITY ORDERED	QUANTITY DELIVERED	PRODUCT CODE	PRODUCT DESCRIPTION	UNIT MEASURE	UNIT PRICE 11607	EXTENDED PRICE
10.00	60.00	10.00	32623101	1 SK FLOWFILL			
TRUCK	PLANT	SLUMP	DUE AT JOB	USE OF CONCRETE	SUB TOTAL		
TRUCK	PLANT	SLUMP	DUE AT JOB	USE OF CONCRETE	STATE TAX		
ADCEL	AIR ENTRAIN	SUPER PLAS.	CAL. CHLORIDE.	HOT WATER	RETARDER	COUNTY TAX	
6946	01		6.00 in	10:00 AM		CITY TAX	
DELIVERY INSTRUCTIONS					TOTAL		
SPECIAL INSTRUCTIONS							

TEAR HERE

NO.003894

Truck	Driver	User	Disp	Ticket Num	Ticket ID	Time	Date
6946	75022	sa		3894		9:18	12/4/17
Load Size	Mix Code	Returned	Gty	Mix Age	Seq	Load ID	
10.00 yd	32623101				D	28807	
Material	Design Qty	Required	Batched	% Var	% Moisture	Actual Wat	
SA-DF	2566 lb	25847 lb	25800 lb	0.13%	0.73% N	22 gl	
GCC-1/11	70 lb	700 lb	700 lb	0.00%			
4-CHRS	75 lb	750 lb	745 lb	-0.67%			
WATER	45.0 gl	427.5 gl	428.0 gl	0.10%		428.0 gl	
Actual	New Batches: 2				Manual	9:18:07	
Load Totals:	30897 lb	Design 2.390	Water/Cement 2.602	A	Design 450.0 gl	Actual 450.5 gl	To Add: 0.0
Slump: 6.00 in	# Water in Truck: 0.0 gl	Adjust Water: 0.0 gl	/ Load	Tris Water: 0.0 gl/ yd	Note: Manual feed ok		



MICHELE'S READYMIX ROCK & RECYCLE

Billing Address:

501 Patton • Gallup, New Mexico 87301

Plant Address

1661 Hasler Valley Road • Gallup, NM 87301

Batch Plant: 505-863-3818 • FAX 505-863-4720

DELIVERY TICKET

NO.003895

TEST RESULTS	If the driver or delivery person goes beyond the curb line, the undersigned assumes liability and responsibility for authorizing the truck(s) of MICHELE'S READYMIX ROCK & RECYCLE to travel on the job site premises of property adjacent thereto as a means of access to the job site and shall indemnify and hold harmless MICHELE'S READYMIX ROCK & RECYCLE and its employees from any loss, cost, damage, or expense in making delivery as authorized and directed.			LEAVE PLANT 9:11
SLUMP	This concrete will meet the specifications for the working strength marked on the delivery slip if properly poured and cured but is not otherwise warranted. MICHELE'S READYMIX ROCK & RECYCLE will not accept responsibility for the strength and consistency of any concrete to which water or other material has been added at the insistence of the Purchaser after it leaves the plant. Any sampling and testing of this concrete must be in strict accordance with ASTM procedures.			ARRIVE JOB 10:08
CONC. TEMP.	TERMS: Net due 30 days - 1 1/2% per month (18% per year) assessed on past due accounts. Purchaser agrees to pay all attorney fees and/or court costs as may be deemed reasonable in the event legal action becomes necessary to collect any outstanding balance.			FINISH POURING
CYLINDERS TAKEN	<input type="checkbox"/> YES <input checked="" type="checkbox"/> NO	BY: <i>[Signature]</i> CUSTOMER SIGNATURE		LEAVE JOB
WATER ADDED AT CUSTOMER'S REQUEST	<input checked="" type="checkbox"/> YES <input type="checkbox"/> NO	ALLOWABLE UNLOADING TIME: 7 MINUTES PER CUBIC YARD.	ARRIVE PLANT	
CUSTOMER ID	P.O. NUMBER	ZONE	TIME	DATE
TICKET				
SOLD TO	11699	DELIVER TO	9:34 AM	DRIVER
IINA BA INC		Smithlake		12/04/17
QUANTITY THIS LOAD	QUANTITY ORDERED	QUANTITY DELIVERED	PRODUCT CODE	PRODUCT DESCRIPTION
10.00	60.00	30.00	32623101	1 SK FLOWFILL
TRUCK	PLANT	SLUMP	DUE AT JOB	USE OF CONCRETE
6945	01	6.00 in	10:00 AM	%
ACCEL	AIR ENTRAIN	SUPER PLAS.	CAL CHLORIDE	HOT WATER
DELIVERY INSTRUCTIONS				SUB TOTAL
SPECIAL INSTRUCTIONS				STATE TAX
				COUNTY TAX
				CITY TAX
				TOTAL

TEAR HERE

NO.003895

Truck	Driver	User	Disp	Ticket Num	Ticket ID	Time	Date
6945	75015	sa		3895	3895	9:28	12/4/17
Load Size	Mix Code	Returned	Qty	Mix Age	Seq	Load ID	
10.00 yd	32623101				D	28008	
Material	Design Qty	Required	Batched	% Var	% Moisture	Actual Wet	
SA-CF	256 lb	25847 lb	25780 lb	-0.26%	0.73% H	22 gl	
SCC-1/11	70 lb	700 lb	690 lb	-1.43%			
4-CRNHS	75 lb	750 lb	740 lb	-1.33%			
WATER	45.8 gl	427.6 gl	427.0 gl	-0.13%		427.0 gl	
Actual	Net	Batches:			Manual	9:28:29	
Load Total:	30773 lb	Design 2.590	Water/Cement 2.626	T	Design 458.0 gl	Actual 449.4 gl	To Add: 0.6
Slump:	6.00 in	# Water in Trucks:	0.0 gl	Adjust Water:	0.0 gl / Load	Trix Water:	0.0 gl / yd
Note: Manual feed ok							



MICHELE'S READYMIX ROCK & RECYCLE

Billing Address:

501 Patton • Gallup, New Mexico 87301

Plant Address

1661 Hasler Valley Road • Gallup, NM 87301

Batch Plant: 505-863-3818 • FAX 505-863-4720

DELIVERY TICKET

NO.003896

TEST RESULTS		In the event of delivery beyond the curb line, the undersigned assumes liability and responsibility for authorizing the truck(s) of MICHELE'S READYMIX ROCK & RECYCLE to travel on the job site premises of property adjacent thereto as a means of access to the job site and shall indemnify and hold harmless MICHELE'S READYMIX ROCK & RECYCLE and its employees from any loss, cost, damage or expense in making delivery as authorized and directed.						LEAVE PLANT
SLUMP		This concrete will meet the specifications for the working strength marked on the delivery slip if properly poured and cured but is not otherwise warranted. MICHELE'S READYMIX ROCK & RECYCLE will not accept responsibility for the strength and consistency of any concrete to which water or other material has been added at the insistence of the Purchaser after it leaves the plant. Any sampling and testing of this concrete must be in strict accordance with ASTM procedures.						ARRIVE JOB
CONC. TEMP.		TERMS: Net due 30 days - 1 1/2% per month (18% per year) assessed on past due accounts. Purchaser agrees to pay all attorney fees and/or court costs as may be deemed reasonable in the event legal action becomes necessary to collect any outstanding balance.						FINISH POURING
CYLINDERS TAKEN <input type="checkbox"/> YES <input type="checkbox"/> NO		BY: <i>[Signature]</i>						LEAVE JOB
TESTED BY		CUSTOMER SIGNATURE						ARRIVE PLANT
WATER ADDED AT CUSTOMER'S REQUEST		GALLONS		ALLOWABLE UNLOADING TIME: 7 MINUTES PER CUBIC YARD.		TICKET		
CUSTOMER ID	P.O. NUMBER	ZONE	TIME	DATE	TICKET			
OLD TO	11699	DELIVER TO	9:47 AM	DRIVER	12/04/17			
YINA BA INC		Smithlake		GLENN WILSON				
QUANTITY THIS LOAD	QUANTITY ORDERED	QUANTITY DELIVERED	PRODUCT CODE	PRODUCT DESCRIPTION	UNIT MEASURE	UNIT PRICE	EXTENDED PRICE	
10.00	60.00	30.00	32623101	1 SK FLOWFILL		6.07		
TRUCK	PLANT	SLUMP	DUE AT JOB	USE OF CONCRETE	SUB TOTAL			
6947		6.00 in	10:04 AM		STATE TAX			
WATER	AIR ENTRAIN	SUPER PLAS.	CAL. CHLORIDE	HOT WATER	RETARDER	COUNTY TAX		
45.0	0.1					CITY TAX		
DELIVERY INSTRUCTIONS						TOTAL		
SPECIAL INSTRUCTIONS								

TEAR HERE

NO.003896

Truck	Driver	User	Disp	Ticket Num	Ticket ID	Time	Date
6947	75020	sa		3896	3896	9:35	12/4/17
Load Size	Mix Code	Returned	Qty	Mix Age	Seq	Load ID	
10.00 yd	32623101				D	28809	
Material	Design Qty	Required	Batched	% Var	% Moisture	Actual Wat	
SA-CF	2566 lb	25847 lb	25800 lb	-0.18%	0.73% M	22 gl	
GCC-1/II	70 lb	700 lb	695 lb	-0.71%			
4-CRMS	75 lb	750 lb	755 lb	0.67%			
WATER	45.0 gl	427.5 gl	428.0 gl	0.10%		428.0 gl	
Actual	Now	Batches:	2		Manual	9:35:18	
Load Total:	30028 lb	Design 2.500	Water/Cement 2.592	g	Design	450.0 gl	Actual 450.4 gl To Add: 0.0
Slump:	6.00 in	# Water	in Trucks: 0.0 gl	Adjust Water:	0.0 gl / Load	Trim Water:	0.0 gl / yd Note: Manual feed ok



MICHELE'S READYMIX ROCK & RECYCLE

Billing Address:

501 Patton • Gallup, New Mexico 87301

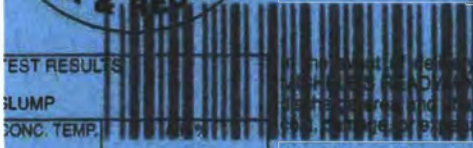
Plant Address

1661 Hasler Valley Road • Gallup, NM 87301

Batch Plant: 505-863-3818 • FAX 505-863-4720

DELIVERY TICKET

NO.003898



TEST RESULTS
SLUMP
CONC. TEMP.
CYLINDERS TAKEN YES NO
TESTED BY

In the event of delivery beyond the curb line, the undersigned assumes liability and responsibility for authorizing the truck(s) of MICHELE'S READYMIX ROCK & RECYCLE to travel on the job site premises of property adjacent thereto as a means of access to the job site, and shall indemnify and hold harmless MICHELE'S READYMIX ROCK & RECYCLE and its employees from any loss, damage or expense in making delivery as authorized and directed.

This concrete will meet the specifications for the working strength marked on the delivery slip if properly poured and cured but is not otherwise warranted. MICHELE'S READYMIX ROCK & RECYCLE will not accept responsibility for the strength and consistency of any concrete to which water or other material has been added at the insistence of the Purchaser after it leaves the plant. Any sampling and testing of this concrete must be in strict accordance with ASTM procedures.

TERMS: Net due 30 days - 1 1/2% per month (18% per year) assessed on past due accounts. Purchaser agrees to pay all attorney fees and/or court costs as may be deemed reasonable in the event legal action becomes necessary to collect any outstanding balance.

LEAVE PLANT
ARRIVE JOB
FINISH POURING
LEAVE JOB
ARRIVE PLANT

WATER ADDED AT CUSTOMER'S REQUEST
GALLONS

BY: *[Signature]*
CUSTOMER SIGNATURE

ALLOWABLE UNLOADING TIME: 7 MINUTES PER CUBIC YARD.

CUSTOMER ID	P.O. NUMBER	ZONE	TIME	DATE	TICKET
11699			11:28 AM	12/04/17	
OLD TO	DELIVER TO		DRIVER		
LINA BA INC	Smithlake		LAWRENCE SAM		

QUANTITY THIS LOAD	QUANTITY ORDERED	QUANTITY DELIVERED	PRODUCT CODE	PRODUCT DESCRIPTION	UNIT MEASURE	UNIT PRICE	EXTENDED PRICE
10.00	50.00	40.00	32623101	1 SK FLOWFILL		1607	
						SUB TOTAL	
						STATE TAX	
						COUNTY TAX	
						CITY TAX	
						TOTAL	

DELIVERY INSTRUCTIONS
SPECIAL INSTRUCTIONS

TEAR HERE

NO.003898

Truck	Driver	User	Disp	Ticket Num	Ticket ID	Time	Date
6946	75022	sa		3898	3898	11:22	12/4/17
Load Size	Mix Code	Returned	Qty	Mix Age	Seq	Load ID	
10.00 yd	32623101				D	28811	
Material	Design Qty	Required	Batched	% Var	% Moisture	Actual Wat	
SA-CF	2566 lb	25847 lb	25728 lb	-0.49%	0.73% M	22 gl	
SCC-1/II	70 lb	700 lb	700 lb	0.00%			
4-CRMS	75 lb	750 lb	750 lb	0.00%			
WATER	45.0 gl	427.6 gl	428.0 gl	0.10%		428.0 gl	
Actual	Num Batches: 2						
Load Total:	30742 lb	Design 2.500 Water/Cement 2.552 A			Manual 11:22:59	Actual 450.3 gl	To Add: 0.0
Slump:	5.00 in	# Water in Truck: 0.0 gl	Adjust Water: 0.0 gl	/ Load	Tris Water: 0.0 gl/ yd	Note: Manual feed ok	



MICHELE'S READYMIX ROCK & RECYCLE

Billing Address:

501 Patton • Gallup, New Mexico 87301

Plant Address

1661 Hasler Valley Road • Gallup, NM 87301

Batch Plant: 505-863-3818 • FAX 505-863-4720

DELIVERY TICKET

NO.003900

TEST RESULTS		In the event of delivery beyond the curb line, the undersigned assumes liability and responsibility for authorizing the truck(s) of MICHELE'S READYMIX ROCK & RECYCLE to travel on the job site premises of property adjacent thereto as a means of access to the discharge area and shall indemnify and hold harmless MICHELE'S READYMIX ROCK & RECYCLE and its employees from any loss, cost, damage, or expense in making delivery as authorized and directed.						LEAVE PLANT 12:00			
SLUMP		This concrete will meet the specifications for the working strength marked on the delivery slip if properly poured and cured but is not otherwise warranted. MICHELE'S READYMIX ROCK & RECYCLE will not accept responsibility for the strength and consistency of any concrete to which water or other material has been added at the insistence of the Purchaser after it leaves the plant. Any sampling and testing of this concrete must be in strict accordance with ASTM procedures.						ARRIVE JOB 12:55			
CONC. TEMP.		AIR %		TERMS: Net due 30 days - 1 1/2% per month (18% per year) assessed on past due accounts. Purchaser agrees to pay all attorney fees and/or court costs as may be deemed reasonable in the event legal action becomes necessary to collect any outstanding balance.						FINISH POURING 1:00	
CYLINDERS TAKEN		<input type="checkbox"/> YES <input type="checkbox"/> NO		BY: <i>[Signature]</i>						LEAVE JOB	
TESTED BY		ALLOWABLE UNLOADING TIME: 7 MINUTES PER CUBIC YARD.						ARRIVE PLANT			
WATER ADDED AT CUSTOMER'S REQUEST		GALLONS		CUSTOMER SIGNATURE						TICKET	
CUSTOMER ID 11699		P.O. NUMBER		ZONE		TIME 11:54		DATE 12/0			
OLD TO HINA BA INC				DELIVER TO Smithlake				DRIVER GLENN WILSON			
								11607			
QUANTITY THIS LOAD	QUANTITY ORDERED	QUANTITY DELIVERED	PRODUCT CODE	PRODUCT DESCRIPTION	UNIT MEASURE	UNIT PRICE	EXTENDED PRICE				
10.00	60.00	60.00	32623101	1 SK FLOWFILL							
TRUCK	PLANT	SLUMP	DUE AT JOB	USE OF CONCRETE			SUB TOTAL				
6947	01	6.00 in	12:17 PM				STATE TAX				
ADJCEL	AIR ENTRAIN	SUPER PLAS.	CAL. CHLORIDE	HOT WATER	RETARDER	COUNTY TAX					
						CITY TAX					
DELIVERY INSTRUCTIONS						TOTAL					
SPECIAL INSTRUCTIONS											

Truck 6947 Driver 75020 User sa **NO.003900**
 Load Size 10.00 yd Mix Code 32623101 Returned Qty Mix Age Seq Load ID 28813
 Material Design Qty Required Batched % Var % Moisture Actual Wat
 50-CF 2566 lb 2547 lb 2560 lb -0.65% 0.73% M 22 gl
 600-1/11 70 lb 700 lb 635 lb -0.71%
 4-CRNS 75 lb 750 lb 740 lb -1.33%
 WATER 50.0 gl 477.6 gl 477.0 gl -0.12%
 Actual New batches: 2 Manual 11:48:07
 Load Total: 31096 lb Design 2.070 Water/Cement 2.200 T Design 500.0 gl Actual 499.3 gl To Add: 0.7
 Slump: 6.00 in # Water in Truck: 0.0 gl Adjust Water: 0.0 gl / Load Trim Water: 0.0 gl / yd Note: Manual feed ok



MICHELE'S READY MIX ROCK & RECYCLE

Billing Address:

501 Patton • Gallup, New Mexico 87301

Plant Address

1661 Hasler Valley Road • Gallup, NM 87301

Batch Plant: 505-863-3818 • FAX 505-863-4720

DELIVERY TICKET

NO.003931

EST RESULTS		If the driver is delivery beyond the curb line, the undersigned assumes liability and responsibility for authorizing the truck(s) of MICHELE'S READY MIX ROCK & RECYCLE to travel on the job site premises of property adjacent thereto as a means of access to the job site and to hold harmless MICHELE'S READY MIX ROCK & RECYCLE and its employees from any loss, damage or expense in making delivery as authorized and directed.						LEAVE PLANT 2:32
SLUMP		This concrete will meet the specifications for the working strength marked on the delivery slip if properly poured and cured but is not otherwise warranted. MICHELE'S READY MIX ROCK & RECYCLE will not accept responsibility for the strength and consistency of any concrete to which water or other material has been added at the insistence of the Purchaser after it leaves the plant. Any sampling and testing of this concrete must be in strict accordance with ASTM procedures.						ARRIVE JOB 3:28
CYLINDERS TAKEN <input type="checkbox"/> YES <input checked="" type="checkbox"/> NO		TERMS: Net due 30 days - 1 1/2% per month (18% per year) assessed on past due accounts. Purchaser agrees to pay all attorney fees and/or court costs as may be deemed reasonable in the event legal action becomes necessary to collect any outstanding balance.						FINISH POURING
TESTED BY		BY: <i>Antonio New</i>						LEAVE JOB
WATER ADDED AT CUSTOMER'S REQUEST		GALLONS		CUSTOMER SIGNATURE		ALLOWABLE UNLOADING TIME: 7 MINUTES PER CUBIC YARD.	ARRIVE PLANT	
CUSTOMER ID	PO. NUMBER	ZONE	TIME	DATE	TICKET			
OLD TO	11699	DELIVER TO	2:18 PM	DRIVER	12/05/17			
PING BA INC		Smithlake		BERLYN TOM				
QUANTITY THIS LOAD	QUANTITY ORDERED	QUANTITY DELIVERED	PRODUCT CODE	PRODUCT DESCRIPTION	UNIT MEASURE	UNIT PRICE	EXTENDED PRICE	
10.00	30.00	30.00	32623101	1 SK FLOWFILL		1611		
TRUCK	PLANT	SLUMP	DUE AT JOB	USE OF CONCRETE	SUB TOTAL			
6945	01	6.00 in	3:10 PM	%	STATE TAX			
CEMENT	AIR ENTRAIN	SUPER PLAS.	CAL. CHLORIDE	HOT WATER	RETARDER	COUNTY TAX		
6945	01	6.00 in	3:10 PM	%		CITY TAX		
DELIVERY INSTRUCTIONS						TOTAL		
SPECIAL INSTRUCTIONS								

TEAR HERE

NO.003931

Truck	Driver	User	Disp	Ticket Num	Ticket ID	Time	Date
6945	75015	sa		3931	3931	14:12	12/5/17
Load Size	Mix Code	Returned	Qty	Mix Age	Seq	Load ID	
10.00 yd	32623101				D	28844	
Material	Design Qty	Required	Batched	% Var	% Moisture	Actual Wat	
SA-CF	2566 lb	25947 lb	25660 lb	-0.72%	0.73% M	22 gl	
BCC-1/II	78 lb	700 lb	690 lb	-1.43%			
4-CRNS	75 lb	750 lb	745 lb	-0.67%			
WATER	45.0 gl	427.6 gl	427.0 gl	-0.13%		427.0 gl	
Actual	Num Batches: 2				Manual	14:12:46	
Load Total: 30658 lb	Design 2.399 Water/Cement 2.617 T				Design 450.0 gl	Actual 449.3 gl	To Add: 0.7
Slump: 6.00 in	# Water in Truck: 0.0 gl	Adjust Water: 0.0 gl	/ Load	Tris Water: 0.0 gl/ yd	Note: Manual feed ok		



MICHELE'S READYMIX ROCK & RECYCLE

Billing Address:

501 Patton • Gallup, New Mexico 87301

Plant Address

1661 Hasler Valley Road • Gallup, NM 87301

Batch Plant: 505-863-3818 • FAX 505-863-4720

DELIVERY TICKET

NO.003918

EST RESULTS		If the truck is loaded beyond the curb line, the undersigned assumes liability and responsibility for authorizing the truck(s) of MICHELE'S READYMIX ROCK & RECYCLE to travel on the job site premises of property adjacent thereto as a means of access to the job site and shall indemnify and hold harmless MICHELE'S READYMIX ROCK & RECYCLE and its employees from any loss, cost, damage, or expense in making delivery as authorized and directed.						LEAVE PLANT	
LUMP		This concrete will meet the specifications for the working strength marked on the delivery slip if properly poured and cured but is not otherwise warranted. MICHELE'S READYMIX ROCK & RECYCLE will not accept responsibility for the strength and consistency of any concrete to which water or other material has been added at the insistence of the Purchaser after it leaves the plant. Any sampling and testing of this concrete must be in strict accordance with ASTM procedures.						911	
CONC. TEMP.		AIR %		TERMS: Net due 30 days - 1 1/2% per month (18% per year) assessed on past due accounts. Purchaser agrees to pay all attorney fees and/or court costs as may be deemed reasonable in the event legal action becomes necessary to collect any outstanding balance.				ARRIVE JOB	
CYLINDERS TAKEN		<input type="checkbox"/> YES <input type="checkbox"/> NO		BY: <i>Antonio N...</i>				1005	
TESTED BY		ALLOWABLE UNLOADING TIME: 7 MINUTES PER CUBIC YARD.						FINISH POURING	
WATER ADDED AT CUSTOMER'S REQUEST		GALLONS		CUSTOMER SIGNATURE				LEAVE JOB	
CUSTOMER ID		P.O. NUMBER		ZONE		DATE		ARRIVE PLANT	
11699						12/05/17			
OLD TO				DELIVER TO		DRIVER			
IINA BA INC				Smithlake		BERLYN TOM			
QUANTITY THIS LOAD	QUANTITY ORDERED	QUANTITY DELIVERED	PRODUCT CODE	PRODUCT DESCRIPTION	UNIT MEASURE	UNIT PRICE	EXTENDED PRICE		
10.00	20.00	10.00	32623101	1 SK FLOWFILL		11611			
TRUCK	PLANT	SLUMP	DUE AT JOB	USE OF CONCRETE	SUB TOTAL				
6945					STATE TAX				
WATER	AIR ENTRAIN	SUPER PLAS	LEGAL CHLORIDE	HOT WATER	RETARDER	COUNTY TAX			
	6.00 in			10:00 AM		CITY TAX			
DELIVERY INSTRUCTIONS						TOTAL			
SPECIAL INSTRUCTIONS									

TEAR HERE

NO.003918

Truck	Driver	User	Disp	Ticket Num	Ticket ID	Time	Date
6945	75015	sa		3918	3918	8:52	12/5/17
Load Size	Mix Code	Returned	Qty	Mix Age	Seq	Load ID	
10.00 yd	32623101				D	28831	
Material	Design Qty	Required	Batched	% Var	% Moisture	Actual Wat	
SA-CF	2566 lb	25847 lb	26120 lb	+ 1.05%	0.73% H	23 gl	
GCC-1/11	70 lb	700 lb	695 lb	-0.71%			
4-CANRS	75 lb	750 lb	748 lb	-1.33%			
WATER	45.0 gl	427.6 gl	428.0 gl	0.10%		428.0 gl	
Actual	New Batches:	2			Manual	8:52:42	
Load Total:	31127 lb	Design 2.590	Water/Lowest 2.621	A	Design 450.0 gl	Actual 430.7 gl	To Add: 0.0
Slump:	6.00 in	Water in Truck:	0.0 gl	Adjust Water:	0.0 gl / Load	Trim Water:	0.0 gl / yd
							Note: Manual feed ok

DANGER



**ABANDONED
URANIUM MINE**

KEEP OUT

Ba'ha'dzid - Doo Ko'ne'na'adaa'da

NO

**Building
Gathering
Playing
Corrals
Digging**

AT MINES



**Contact Navajo Superfund Program
for Information at 1-800-314-1846
or USEPA at 1-800-231-3075**



DANGER



**BIOLOGICAL
HAZARDS**

DO NOT ENTER