

FINAL REMEDIAL ACTION REPORT

**VASQUEZ BOULEVARD/INTERSTATE 70
OPERABLE UNIT 1 – RESIDENTIAL SOILS
DENVER, COLORADO**

CERCLIS ID: CO0002259588

Prepared for:



**U.S. Army Corps of Engineers, Omaha District
Omaha, Nebraska
Rapid Response Program
Offutt AFB, NE 68113**

**USACE Contract No. W9128F-12-D-0003
Task Order No. 0002**



**Environmental Protection Agency
Region 8
1595 Wynkoop Street
Denver, CO 80202**

Prepared by:



**CB&I Federal Services LLC
6380 S. Fiddlers Green Circle, Suite 300
Greenwood Village, Colorado 80111**

February 2017

VASQUEZ BOULEVARD/INTERSTATE 70
OPERABLE UNIT 1 – RESIDENTIAL SOILS
DENVER, COLORADO

Remedial Action Report

CERCLIS ID: CO0002259588

USACE Contract No. W9128F-12-D-0003
Task Order No. 0002

Reviewed by Kathleen E. Romalia
Kathleen Romalia, PE, PMP
CB&I Project Manager

Date: 2/13/17

Approved by Mark Meacham
Mark Meacham
USACE Omaha District, Program Manager

Date: 02/09/17

Approved by Dania Zinner
Dania Zinner
EPA Region VIII Remedial Project Manager

Date: 2/14/17

Approved by Bill Murray
Bill Murray
EPA Region VIII Superfund Remedial Program Director

Date: 2/22/17

Table of Contents

	<u>Page</u>
List of Exhibits	ii
List of Tables	ii
List of Figures	ii
List of Plates	ii
List of Abbreviations and Acronyms.....	iii
1.0 Introduction.....	1-1
2.0 Background	2-1
2.1 OU1 Description	2-1
2.2 Site History	2-1
2.2.1 Phase I Soil Sampling	2-2
2.2.2 Phase II	2-3
2.2.3 NPL Listing of VB/I-70	2-3
2.2.4 TCRA.....	2-3
2.2.5 Phase III/Remedial Investigation	2-3
2.2.6 NTCRA	2-4
2.3 Enforcement Activities	2-4
2.4 Community Participation.....	2-5
2.5 Record of Decision	2-5
2.5.1 Remedial Action Objectives.....	2-5
2.5.1.1 RAOs for Arsenic in Soil	2-6
2.5.1.2 RAO for Lead in Soil	2-6
2.5.2 Remedy Description	2-6
2.5.2.1 Community Health Program.....	2-6
2.5.2.2 Soil Removal.....	2-8
2.5.2.3 Sampling Program	2-9
2.6 Remedial Design	2-9
2.7 Explanation of Significant Differences	2-10
3.0 Construction Activities	3-1
3.1 Community Health Program	3-1
3.1.1 Biomonitoring.....	3-1
3.1.2 Community Outreach.....	3-2
3.2 Soil Sampling.....	3-2
3.3 Residential Soil Removal.....	3-2
3.4 Notices of Environmental Conditions and Annual Informational Letter	3-4
4.0 Chronology of Events	4-1
5.0 Performance Standards and Construction Quality Control	5-1
6.0 Final Inspection and Certifications.....	6-1
7.0 Operation & Maintenance Activities.....	7-1
8.0 Contact Information	8-1
9.0 References	9-1

List of Exhibits

Exhibit 1	Summary of Remediated Properties by Year
Exhibit 2	Contact Information

List of Tables

Table 1	Chronology of Events
Table 2	Property Status

List of Figures

Figure 1	VB/I-70 Superfund Site Boundary Map
----------	-------------------------------------

List of Plates

Plate 1	VB/I-70 OU1 Properties with Filed Notices of Environmental Conditions
---------	-----------------------------------------------------------------------

List of Abbreviations and Acronyms

µg/dL	micrograms per deciliter
ARAR	Applicable or Relevant and Appropriate Requirement
ATSDR	Agency for Toxic Substances and Disease Registry
CB&I	CB&I Federal Services LLC
CDC	Centers for Disease Control and Prevention
CDPHE	Colorado Department of Public Health and Environment
CEASE	Clayton, Elyria, and Swansea Environmental Coalition
CERCLA	Comprehensive Environmental Response, Compensation, and Liability Act
DADS	Denver and Arapahoe Disposal Site
EPA	U.S. Environmental Protection Agency
ESD	Explanation of Significant Differences
FS	Feasibility Study
FYR	Five Year Review
HQ	Hazard Quotient
IC	Institutional Control
mph	miles per hour
NCP	National Oil and Hazardous Substances Pollution Contingency Plan
NPL	EPA Superfund National Priorities List
NTCRA	Non-Time Critical Removal Action
O&M	operation and maintenance
OU	Operable Unit
ppm	parts per million
PRP	Potential Responsible Party
QA	Quality Assurance
QC	Quality Control
RAO	Remedial Action Objective
RI	Remedial Investigation
ROD	Record of Decision
Site	VB/I-70 Superfund Site
TCRA	Time Critical Removal Action
USACE	U.S. Army Corps of Engineers
VB/I-70	Vasquez Boulevard and Interstate 70

(This page intentionally left blank.)

1.0 Introduction

The Vasquez Boulevard and I-70 (VB/I-70) Superfund Site (Site) comprises approximately 4.5 square miles located in the north-central section of Denver, Colorado. Historically, the Site and the area around the Site was a major smelting center for the Rocky Mountain West. The Omaha & Grant Smelter, the Argo Smelter, and the ASARCO Globe Smelter all previously operated in the area refining gold, silver, copper, lead, and zinc (CB&I, 2015).

The VB/I-70 Site was placed on the U.S. Environmental Protection Agency (EPA) Superfund National Priorities List (NPL) in 1999 due to metal contamination associated with historical smelter operations. The primary contaminants of concern are lead and arsenic. Subsequent investigations indicated that arsenic contamination might also be present as a result of application of lawn care products.

For the purposes of the remedial investigation and remedy development, EPA segregated the VB/I-70 Site into the following three operable units (OUs) (**Figure 1**):

- OU1 is defined as residential yards within the Site with levels of lead or arsenic in soil that present an unacceptable risk to human health. OU1 includes the Denver neighborhoods of Cole, Clayton, Swansea, Elyria, as well as the southwest portion of the Globeville neighborhood, and a northern section of the Curtis Park neighborhood.
- OU2 is defined as the area where the former Omaha & Grant Smelter operated and includes all environmental media impacted by releases of hazardous substances from the smelter.
- OU3 is defined as the area where the former Argo Smelter operated and includes all environmental media impacted by releases of hazardous substances from that smelter.

The structures associated with the OU2 Omaha & Grant Smelter and the OU3 Argo Smelter have been demolished and the areas have been redeveloped with commercial businesses.

EPA's highest priority at the VB/I-70 Site was OU1 because of the highest potential for human exposure to contaminants of concern located in the residential yards. The remedy included three components: informational institutional controls (ICs) consisting of a community health program, notices of environmental conditions, and distribution of annual information letters; soil removal; and soil sampling. EPA is the lead agency for remedial response activities at OU1, and Superfund primarily financed the response activities. The Colorado Department of Public Health and Environment (CDPHE) is the support agency. Remediation of OU1 was performed independent of OU2 and OU3 (EPA, 2014b).

This report documents the remedial action completed at OU1 in accordance with the OU1 Record of Decision (ROD) (EPA, 2003), including the Explanation of Significant Differences (ESD) signed on September 30, 2014 (EPA, 2014a). This report supplements the previous *Remedial*

Action Report, VB/I-70 Site, CERCLIS ID CO0002259588, OU1 – Residential Soils (EPA, 2008) by providing information regarding the remedial action activities that have occurred since that report.

As part of the remedial action, which was conducted in 2004 through 2015, 382 and 633 properties were sampled and cleaned up, respectively (EPA, 1998-2015).¹ The informational ICs address the properties where the owner would not consent to EPA performing soil sampling or remediation. Of the approximately 4,470 residential properties included in OU1, there are 45 unsampled properties and 10 unremediated properties (EPA, 1998-2015); the informational ICs have been implemented for each of these properties.

This report was prepared in accordance with the recommended remedial action report contents presented in OSWER Directive 9320.2-22, *Close Out Procedures for National Priorities List Sites* (EPA, 2011).

¹ A number of OU1 properties were sampled and/or cleaned up prior to the remedial action. Details on these efforts are provided in **Section 2.2**.

2.0 Background

2.1 OU1 Description

There are approximately 4,470 residential properties, 10 schools, and 7 parks located within the OU1 Site. Most residences are single-family dwellings, but some multi-family homes and apartment buildings are also present. A number of commercial and industrial properties are within the OU1 Site. The 2010 census states the population living within the OU1 Site Boundaries was 16,262, including 2,700 children under the age of 6.

EPA determined that the VB/I-70 Site is an Environmental Justice site because residents are predominantly low income and minority. It is also disproportionately affected by environmental impacts from many sources including industry, other Superfund sites, and major transportation corridors.

The topography of the OU1 Site is largely flat, sloping gently towards the South Platte River, which flows in a northeasterly direction through the OU1 Site. There are no other major surface water bodies within the OU1 Site area.

Annual rainfall at the OU1 Site measures approximately 16 inches, 60 percent of which occurs during the spring and summer months. The rainiest month is May, with an average rainfall of 2.6 inches. Snowfall totals average approximately 60 inches, with March usually receiving the most snow. The Rocky Mountain foothills, approximately 20 miles west of the OU1 Site, create a predominantly southern wind flow, with an average velocity of approximately 8.5 miles per hour (mph). Peak winds can reach velocities of 30 to 50 mph, with the highest winds tending to be from the north-northwest (Colorado Climate Center, 2000).

2.2 Site History

Table 1 provides a chronology of OU1 events, including pre-ROD milestones. These pre-ROD milestones are also summarized below.

The VB/I-70 Site came to the attention of EPA following studies directed by CDPHE at the adjacent ASARCO Globe Site² (CERCLIS ID # COD007063530), which was used for the smelting and refining of metals and metal based chemicals. EPA proposed the ASARCO Globe Site be included on the NPL in May 1993, but the proposal was never finalized. In July 1993, the State and ASARCO Inc. entered into a Consent Decree to resolve a lawsuit under the

² Globe Site is located immediately to the west, across the South Platte River, and is contiguous with the VB/I-70 Site. The Globe Site consists of 78 acres containing residential and commercial properties and 53 current and former manufacturing facilities. The ASARCO Globe Plant has been the site of various base and precious metal refining operations since 1886. The plant primarily operated as a lead smelter from 1901 until 1919. It produced arsenic trioxide from 1919 until 1926. Cadmium production commenced in 1926 and continued until June 1993. The Globe Plant currently produces litharge (lead oxide), bismuth oxide, and test lead, as well as refines high-purity metals. CDPHE is the lead agency for the environment cleanup activities at the Globe Plant Site (CDPHE, 2016).

Comprehensive Environmental Response, Compensation, and Liability Act (CERCLA) filed by the State of Colorado. As part of that Settlement Agreement, ASARCO agreed to remediate soils in residential properties surrounding the Globe Plant where levels of cadmium, lead, and/or arsenic exceeded acceptable limits established by the State in the ROD.

The Consent Decree required ASARCO to collect soil samples from residential yards in the Globeville neighborhood and continue remediation until the extent of contamination from the Globe Plant was established. As part of the investigation, ASARCO found random occurrences of elevated levels of arsenic in residential yards at greater distances from the Globe plant site.

CDPHE continued to be concerned about the possible health risks to area residents potentially exposed to arsenic in yard soils and about the extent of the problem in the north Denver area. In 1997, CDPHE began a limited soil sampling program in the Elyria and Swansea neighborhoods, located just east of Globeville, across the South Platte River. These results indicated that high concentrations of arsenic in soil extended far beyond the Globeville neighborhood. Accordingly, CDPHE requested EPA's assistance in immediately responding to the elevated levels of arsenic and lead in soil found in the Elyria and Swansea neighborhoods.

In 1998, EPA's first action at the Site was to mobilize an Emergency Response team to conduct an extensive soil sampling effort (performed in two phases) and Time Critical Removal Action (TCRA) for the houses posing immediate health risks to local residents. EPA performed a Non-Time Critical Removal Action (NTCRA) subsequent to the Emergency Response.

2.2.1 Phase I Soil Sampling

Phase I included an extensive screening level soil sampling effort. The objective was to collect soil samples from as many residential properties as possible to identify properties that were potential TCRA candidates (remove and replace soil).

EPA established boundaries of the Phase I sampling program as East 38th Avenue on the south, East 56th Avenue on the north, Colorado and Vasquez Boulevards on the east and the South Platte River on the west, and included the southwest portion of Globeville, the only area of Globeville not yet characterized by ASARCO.

Phase I sampling occurred during March and April 1998. A minimum of three grab samples were collected from each property where EPA obtained access; two samples from the surface and one from the subsurface. EPA also collected soil samples from all schools and parks located within the initial study area. Samples were collected from locations judged to present a high potential for exposure relative to other areas of the property (for example, at bare spots within the yard) and were analyzed for arsenic, lead, cadmium, and zinc. From the Phase I data, EPA identified 37 properties as potentially requiring a TCRA.

2.2.2 Phase II

The Phase II sampling occurred in July and August 1998. Additional soil samples were collected from any residential properties that had a maximum surface soil concentration equal to or greater than 450 parts per million (ppm) for arsenic or 2,000 ppm for lead (i.e., TCRA candidates). EPA's removal team revisited these residential properties and collected a 5-point composite sample from the front yard and a second 5-point composite sample from the back yard of each property. Arsenic and lead levels in these samples were measured and any property with one or more composite samples exceeding the removal action levels for either arsenic or lead was identified for soil removal.

Also in Phase II, the EPA On Scene Coordinator extended the Site boundaries south to East 35th Avenue, encompassing a greater portion of the Cole and Clayton neighborhoods. Properties not sampled during Phase I were targeted for screening level sampling using the Phase I protocols. In all, EPA sampled 1,393 properties as part of the Phase I and II programs. From the Phase II sampling results, EPA identified 143 properties as requiring a soil cleanup.

2.2.3 NPL Listing of VB/I-70

Based on the results of the Phase I and Phase II sampling programs, EPA determined that numerous residential properties within the VB/I-70 Site contained concentrations of arsenic or lead at levels that could present unacceptable health risks to residents with long term exposures. On this basis, the EPA proposed the VB/I-70 Site for inclusion on the NPL in January 1999.

2.2.4 TCRA

In September 1998, EPA issued an Action Memorandum that established the basis for conducting a TCRA. The Action Memorandum required that soil be removed and replaced at any property with an average arsenic soil level greater than 450 ppm and/or lead soil levels greater than 2,000 ppm. These removal "action levels" were chosen to protect young children from adverse health effects related to short-term (sub-chronic) exposure. EPA conducted a TCRA at 18 properties in October and November of 1998. Further TCRA efforts were conducted at an additional 30 properties in 2000 as a result of the Phase II sampling.

2.2.5 Phase III/Remedial Investigation

Anticipating the need for long-term response, EPA began Phase III/Remedial Investigation (RI) activities in August 1998 while TCRA activities were in progress. During the public comment period on the proposed NPL listing of the VB/I-70 Site, ASARCO submitted information indicating that the source of the arsenic in residential soil may be lawn care products that were readily available for residential use in the Rocky Mountain Region and elsewhere in the west in the 1950s and 1960s. These products were legally formulated with arsenic trioxide and lead arsenate to be effective in controlling crabgrass. ASARCO specifically identified "PAX 3-year Crabgrass Control," available from the 1950s until the early 1970s, and formulated with 27 percent arsenic trioxide and 8 percent lead arsenic oxide. The product is no longer available commercially.

In order to assess ASARCO's arguments, EPA's Phase III/RI activities focused on collecting all necessary information to accurately characterize exposure and risk to residents at the VB/I-70 Site to support a quantitative baseline human health risk assessment and remedial risk management decisions (EPA, 2001a). Over 3,000 of the approximately 4,000 properties at the Site were sampled to meet these goals. Also, efforts began to investigate the source of the arsenic and lead in residential soils. Toward that end, EPA used its CERCLA Section 104(e) information gathering authority to acquire a 6-ounce sample of the "PAX 3-year Crabgrass Control" product from Martin Resources, a company that acquired the company that had manufactured PAX. Tests on the PAX sample formulation provided by Martin Resources were helpful to EPA, but by themselves proved inconclusive to determine whether all arsenic and lead found in the VB/I-70 residential soils derived from pesticides or smelter emissions, or both.

2.2.6 NTCRA

On March 6, 2003, EPA issued an Action Memorandum that established the basis for conducting a NTCRA. The Action Memorandum required the removal and replacement of soil at any property that had an arsenic soil level greater than 240 ppm and/or lead soil levels greater than 540 ppm. These "action levels" were chosen to address properties that present the highest risk of adverse health effects to children and adult residents. In 2003, EPA conducted cleanups at 133 properties, which were identified as requiring cleanup based on the Phase II data. The properties not addressed by the non-time critical removal action were included in the list of properties to be addressed by the remedial action.

2.3 Enforcement Activities

EPA Region 8 conducted a Potential Responsible Party (PRP) Search for the Site to identify current property owners, past owners, and operators. EPA identified ASARCO Incorporated as the primary operator of two of the three smelters historically located in the general area of the VB/I-70 Site: the Globe Smelter and the Omaha & Grant Smelter.

EPA determined ASARCO was liable for the lead contamination found at OU1. However, ASARCO argued the arsenic requiring remediation came from sources other than smelter emissions. Based on the liability arguments and on ASARCO's financial status at the time, EPA Region 8 decided not to issue an Order to ASARCO to perform the cleanup of OU1.

In 2004, EPA, CDPHE, and ASARCO agreed to a Consent Decree (USDC, 2004) that resolved ASARCO's liability at OU1 of the VB/I-70 Site. The Consent Decree required ASARCO to conduct residential soil cleanups at 100 OU1 properties, provide a repository within the ASARCO Globe Site for all residential soils removed during the OU1 Remedial Action, and conduct all operations and maintenance required at the repository as part of the ASARCO Globe Plant Site (ASARCO LLC, 2006).

2.4 Community Participation

Due to the high degree of public interest, the large population impacted by OU1, and the cultural differences among communities, EPA and CDPHE expanded community involvement to provide for extensive public input throughout the remedial process. Expanded public involvement included conducting a stakeholder assessment, establishment of a stakeholders working group, providing funding for technical assistance grant, and additional public meetings and fact sheet mailings.

In August 1998, EPA formed a Working Group of stakeholders to provide an open forum for discussing all technical aspects of EPA's RI, remedial design and remedial actions. The Working Group addressed the Environmental Justice concerns of having the community participate in decision making by providing direct access to decision makers. Through the Working Group, data and issues were discussed, allowing for community input into decision making throughout development and implementation of the remedial investigations, risk assessment, feasibility study, remedial design, and remedy implementation.

The stakeholders attending the Working Group meetings included representatives from all parties that had an interest in OU1. The Working Group included representatives of the City and County of Denver; CDPHE; the Agency for Toxic Substances and Disease Registry (ATSDR), ASARCO, and representatives from the four Denver neighborhoods included in OU1. Stakeholders also included the Clayton, Elyria, and Swansea Environmental Coalition (CEASE) the recipient of a Technical Assistance Grant from EPA. The VB/I-70 Site has been of interest to local, state, and federal elected officials including the Mayor of Denver, City Council members, State legislators, Congresswoman Diana DeGette, and Senator Wayne Allard. These officials or their representatives were invited and often attended Working Group meetings.

Since much of the population living within the Site boundaries speaks Spanish, EPA translated outreach materials including the proposed plan, fact sheets, and flyers into Spanish. Public notices were translated into Spanish as well and published in local Spanish newspapers. For major public meetings and workshops, EPA provided simultaneous translations so all participants could understand the presentations and ask questions. For small group meetings, the translator sat with those who spoke only Spanish.

2.5 Record of Decision

EPA and CDPHE signed the ROD detailing the final remedy for OU1 in September 2003 (EPA, 2003).

2.5.1 Remedial Action Objectives

The overall Remedial Action Objective (RAO) for OU1 is to protect human health. The following OU1-specific RAOs were developed for arsenic and lead in soil:

2.5.1.1 RAOs for Arsenic in Soil

1. For all residents of the VB/I-70 Site, prevent exposure to soil containing arsenic in levels predicted to result in an excess lifetime cancer risk associated with ingestion of soil which exceeds 1×10^{-4} , using reasonable maximum exposure assumptions (EPA, 2001b).
2. For all residents of the VB/I-70 Site, prevent exposure to soil containing arsenic in levels predicted to result in a chronic or sub-chronic hazard quotient (HQ) associated with ingestion of soil that exceeds a HQ of 1, using reasonable maximum exposure assumptions.
3. For children with soil pica behavior who reside in the VB/I-70 Site, reduce the potential for exposures to arsenic in soil that result in acute effects.

2.5.1.2 RAO for Lead in Soil

1. Limit exposure to lead in soil such that no more than 5 percent of young children (72 months or younger) who live within the VB/I-70 Site are at risk for blood lead levels higher than 10 micrograms per deciliter ($\mu\text{g}/\text{dL}$) from such exposure (EPA, 1994). This provides 95% confidence that children exposed to lead in soil will be protected.

2.5.2 Remedy Description

The selected remedy for OU1 consisted of three components to address lead and arsenic contamination in residential soils: soil sampling, soil removal, and a community health program. Though not identified as such in the ROD, the EPA considers the community health program to be an informational IC. The following is a summary of the description in the ROD of each component of the remedy.

2.5.2.1 Community Health Program

The community health program was composed of two separate, yet partially overlapping, elements. The first element addressed risks to area children from non-soil sources of lead and from lead in soils above the action level of 400 ppm. The second element addressed children with soil pica behavior³ to reduce their risks to arsenic in soil above 47 ppm, the preliminary action level determined in the baseline human health risk assessment for children with soil pica behavior. Participation in one or both elements of the program was strictly voluntary and there was no charge to eligible residents and property owners for any of the services offered by the community health program. The community health program was to be implemented on an ongoing basis until the residential soil removal portion of the remedial action had been completed. Each of these two main elements of the program is described below:

Lead Exposure Risk Reduction. The program for reduction of lead risks was intended to be general. That is, it was intended to assess risks from lead from any and all potential sources of

³ Pica behavior is a rare behavior in which children intentionally eat unusually large amounts of soil.

exposure, with response actions tailored to address the various exposure sources identified. The lead program consisted of three main elements:

- Community and individual education about potential pathways of exposure to lead and the potential health consequences of excessive lead exposure,
- A biomonitoring program by which any child (up to 72 months old) could be tested to evaluate actual exposure, and
- A program that provided a response to any observed lead exposure that is outside the normal range. This response included any necessary follow-up sampling, analysis, and investigation at a child's home to help identify the likely source of exposure. If the source of lead was found to be from residential soils, the property received a high priority for soil removal. If the main source was judged to be non-soil related, responses would have included education, counseling, and/or referral to environmental response programs offered by other agencies.

Arsenic Exposure Reduction, Soil Pica Behavior. The community health program for arsenic was designed to focus specifically on the potential risks to young children that exhibit soil pica behavior. The program for arsenic consisted of three main elements:

- Community and individual education about identification and potential hazards of soil pica behavior and the potential health consequences of excessive acute oral exposure to arsenic,
- A biomonitoring program by which any child could be tested to evaluate actual soil pica exposure to arsenic, and
- A program that provided a response to any observed inorganic arsenic exposures that are outside the normal range. This response included any necessary follow-up sampling, analysis, and investigation at a child's home to help identify the likely source of exposure, and to implement an appropriate response that would help reduce the exposure. If the source of arsenic was found to be from residential soils, the property received a high priority for soil removal. If the main source was judged to be non-soil related, responses would include education, counseling, and/or referral to environmental response programs offered by other agencies.

2.5.2.2 Soil Removal

Soil removals occurred at properties that had lead or arsenic soil concentrations greater than the action levels⁴. The action level for lead was exceeded when the average lead concentration from the three composite soil samples taken from the property was greater than 400 ppm. The action level for arsenic was exceeded when the highest arsenic concentration from the three composite soil samples taken from the property was greater than 70 ppm.

For properties where soil removal was conducted, all accessible soils were removed to a depth of 12 inches⁵. The excavation depth could be reduced to prevent damage to large trees or structures.

At the homeowner's request, flower beds and vegetable gardens were sampled individually. If the concentrations of lead and arsenic in the flower beds or vegetable gardens were found to be below the action levels, then soil removal was not required in these areas. This was the only situation where a partial soil removal occurred at a property.

The excavation areas were backfilled with clean soil containing arsenic and lead concentrations at or below action levels, and pre-remediation yard features restored. If sprinkler systems were present, the system was removed and reinstalled.

All of the disposals through 2008 were transported to the ASARCO Globe Plant Site for use as cover and grading. Excavated soil placement at the ASARCO Globe Plant Site was consistent with the provisions of the Statement of Work as set forth in the Final Consent Decree pursuant to State of Colorado vs. ASARCO, Civ. Action No. 83-C-2383 or as otherwise approved by the State. After the ASARCO Site cap was in place and finalized, project soil went to an approved local solid waste landfill.

For purposes of the OU1 remedial action, and consistent with Section 300.400(e)(1) of the National Oil and Hazardous Substances Pollution Contingency Plan (NCP), EPA determined that the ASARCO Globe Plant was a suitable area in very close proximity to the contamination, which was necessary for the implementation of the response action. Further, because EPA noted that the

⁴ Extensive public comments on the OU1 Proposed Plan released in May 2002 requested that EPA lower the soil concentration cleanup levels from 540 ppm to 400 ppm for lead and from 240 ppm to 70 ppm for arsenic to be consistent with those adopted for the Globe Site. To verify that the pre-ROD soil data were analyzed with sufficient accuracy to identify properties with soil above the ROD cleanup levels, the method detection limits (MDLs) were reviewed in the Remedial Investigation Report (WGI, 2001). The adjusted cleanup levels are within the range of the preliminary remediation goals identified in the OU1 Feasibility Study (MFG, 2001) based on the results of the baseline risk assessment (EPA, 2001). EPA prepared an addendum to the OU1 Feasibility Study, which included a new alternative using 400 ppm and 70 ppm as the cleanup level for lead and arsenic, respectively. A second OU1 Proposed Plan was issued in May 2003 presenting this new alternative as EPA's preferred alternative; CDPHE concurred with this decision.

⁵ The soil removal depth was determined during the RI/FS. The results of these studies found that lead and arsenic concentrations in soil reduced with depth, and at six inches depth, lead and arsenic concentrations in soil were below levels of health concern. Therefore, removal of 12 inches of soils from residential properties was determined to be sufficient to remove the site contaminants.

ASARCO Globe Plant and the adjacent OU1 neighborhoods were “reasonably related on the basis of geography,” and because “the basis of threat or potential threat to the public health or welfare of the environment” were similar (i.e., smelter wastes containing, among other constituents, arsenic and lead), EPA elected to treat the contiguous ASARCO Globe Plant as part of the VB/I-70 Site for remediation purposes. Accordingly, a permit was not required for EPA to dispose of residential soil removed from yards within the Cole, Clayton, Swansea, or Elyria neighborhoods at the ASARCO Globe Plant (CERCLA Section 121[e]). EPA also noted that depositing the VB/I-70 residential soils at the ASARCO Globe Plant is protective of human health and the environment, complies with all Applicable or Relevant and Appropriate Requirements (ARARs) for the remedy selected at VB/I-70 OU1, and accelerated the cleanup at that portion of the ASARCO Globe Site. Lastly, EPA believed disposal of the VB/I-70 residential soil at the ASARCO Globe Plant enhanced its prospects for future reuse as a commercial or recreational facility. Land use restrictions and/or controls have been imposed on the ASARCO Globe Plant to ensure that the soils deposited there as part of this cleanup will not pose a future risk in the event the Plant’s current land use changes. Subsequent to the OU1 ROD, the placement of the soils removed from the VB/I-70 residences at the ASARCO Globe Plant was found acceptable to the Globeville community.

2.5.2.3 Sampling Program

Prior to the ROD, approximately 75 percent of the residential properties within the VB/I-70 Site boundary had been sampled for lead and arsenic. Because the spatial pattern of lead and arsenic contamination is variable throughout the Site, it was not possible to assess if a specific property required a soil removal without data from that property. Therefore, a program of on-going soil sampling was included in the remedy for residential properties within the Site boundaries that had not been adequately tested. The sampling program continued through the completion of the soil removal portion of the remedy.

The soil sampling program began with the identification of properties that required sampling. Once access had been obtained from the property owner to conduct the sampling, soil samples were collected from the property and analyzed for lead and arsenic. The results were provided to the property owner and evaluated to determine if a soil removal was needed. If a soil removal was needed, the property was referred to the contractor conducting the soil removal.

2.6 Remedial Design

An EPA contractor prepared the plan/remedial design for the community health program. EPA issued the community health program design in March 2003. This plan provided the general planning documents and standardized procedures needed to implement the community health program. The City and County of Denver accepted the responsibility for implementing the community health program.

The remedial design for the residential soil sampling and soil removals were also prepared by EPA contractors. EPA issued the Remedial Design Work Plan for Soil Sampling and Remediation Program in July 2004 (EPA, 2004). This work plan presents the detailed procedures for implementation of the soil sampling, removal, and replacement required by the OU1 ROD. The work plan was updated in 2013 to address the additional residential yards that were addressed in 2012 through 2015 (EPA, 2013). A detailed design was prepared for each residential property in cooperation with the homeowner based on the procedures set forth in the remedial design work plans for soil sampling and remediation program (EPA, 2004 and 2013).

2.7 Explanation of Significant Differences

The ROD originally provided an informational IC through the community health program. However, the community health program ended in 2008 when the EPA intended to end the soil sampling and removal components of the remedy.

In 2009, the EPA conducted the first Five Year Review (FYR) of the remedy at VB/I-70 (EPA, 2009). Based on these FYR results, the EPA determined the remedy at OU1 was not protective of human health for properties where EPA was not granted access from the property owner to either sample or cleanup despite EPA contacting the owners numerous times. As part of the first FYR evaluation, a review was conducted of the title records for the unaddressed properties at the time; this review indicated that property transfers were occurring without a process in place to notify the new property owners of the contamination/possible contamination on their property.

It was not cost effective for the EPA to keep open the option for sampling and cleanup for these unaddressed properties into the indefinite future. Therefore, ICs, including re-establishment of the community health program, were being evaluated for the unaddressed properties at the time of the first FYR. An ESD was signed on September 30, 2014, to incorporate additional informational ICs for the unaddressed properties into the OU1 remedy. CDPHE supported EPA's decision to modify the OU1 remedy as described in the ESD. The following objective was defined in the ESD for the informational ICs at OU1:

Reduce or control human exposure to potentially contaminated soil on these properties by providing information regarding the potentially contaminated soils to current and future property owners or tenant.

The informational ICs added by the ESD to the OU1 remedy include the following:

- Notices of environmental conditions filed with the City and County of Denver Clerk and Recorder's office on each unaddressed property.
- Annual informational letters sent to each owner of record, as well as each property address to ensure that any tenants would be aware of the potential for soil contamination and to provide information on how to minimize the potential for exposure to potentially contaminated soil.

3.0 Construction Activities

The selected remedy for OU1 consists of three components to address lead and arsenic contamination in residential soils: soil sampling, soil removal, and informational ICs. Soil sampling and removal as part of the remedy action were started in 2004 and considered completed in 2008; the informational IC in place during these activities was the community health program. As of 2008, the unaddressed properties in OU1 included 55 that had not been sampled and 155 that had been identified for cleanup through sampling but were not cleaned up due to the homeowner not providing access to EPA despite numerous attempts at contacting the homeowner.

Prior to implementation of the informational ICs specified in the ESD (**Section 2.7**), the EPA initiated an outreach effort in 2012 and 2013 to the owners of the remaining unaddressed properties. Earlier in 2012, the EPA had determined that as many as 50 percent of these properties had changed owners since the sampling and cleanup effort had ended in 2008. EPA did not feel it was appropriate to implement the informational ICs on these properties without attempting to coordinate with the new owners. The EPA offered these property owners a final chance to have their property either sampled and/or cleaned up, which was performed in 2012 through 2015 for the properties where access was granted.

3.1 Community Health Program

The community health program was developed in consultation with the Working Group, an advisory stakeholders group for the VB/I-70 Site. The community health program was made up of two activities: providing biomonitoring services for children and conducting community outreach.

The community health program was intended to raise awareness in the community about lead and arsenic hazards and was designed to complement the soil cleanups. The community health program was a unique program designed by local, federal, and state government representatives and committed community leaders. Funded by the EPA and the State, the City and County of Denver administered the program, which included door-to-door visits from community members trained to provide education to area residents on the hazards of lead, arsenic and a range of other environmentally-related topics. The program provided opportunities for parents to have their children tested for lead or arsenic exposure. The community health program concluded in 2008 with completion of the soil sampling and soil removal components of the OU1 remedy.

3.1.1 Biomonitoring

The primary goal of the biomonitoring program was to test young children and pregnant women to determine if they had been exposed to lead and/or arsenic. This was accomplished through the following tasks:

- Establish and staff periodic testing clinics in each neighborhood,
- Collect and analyze biomonitoring samples,

- Report results to each participant, and
- Recommend parents to environmental and medical follow-up actions, if needed.

Thirty-eight clinics were held between November 2004 and October 2006. During this time, 661 individuals participated in the biomonitoring program. Twenty individuals were identified with elevated blood lead above the Centers for Disease Control and Prevention (CDC) concentration of 10 µg/dL. A total of 94 individuals were identified with elevated blood lead concentrations, concentrations ranging from 5 to 10 µg/dL. The parents of the children found with elevated blood lead concentrations were referred to organizations that were able to provide environmental and medical follow-up actions.

3.1.2 Community Outreach

Denver conducted community outreach on a door-to-door canvassing outreach model, utilizing community health workers to provide individual health education. The community health workers were community members that Denver trained to provide health information concerning lead and arsenic exposure and be a resource contact. The community health workers were trained to provide the following information:

- Health effects of lead,
- Health effects of arsenic,
- Soil pica behavior,
- Soil sampling and soil removal aspects of the remedy, and
- Biomonitoring program.

Community health workers conducted home visits at 94 percent of the homes within the site boundaries. In addition to home visits, outreach was conducted to realtors and contractors that live or work within the site communities by mailing them relevant information.

3.2 Soil Sampling

Soil sampling as part of the remedial action was conducted in 2005 through 2015, addressing a total of 382 properties (PRI 2007, 2008). Most of this soil sampling was conducted in 2005 and 2006. A total of 31 properties were identified as requiring soil removal because the lead and/or arsenic concentrations exceeded the action level(s). **Table 2** summarizes (by property address) whether the property was sampled, the average lead concentration, the highest arsenic concentration (of the three composite samples), and whether soil removal was required.

3.3 Residential Soil Removal

Soil removals were conducted in 2004 through 2015 as part of the remedial action, addressing a total of 633 properties. **Exhibit 1** summarizes the number of properties remediated each year.

Table 2 specifies for each individual property whether soil removal was completed (EPA, 1998-2015).

Exhibit 1. Summary of Remediated Properties by Year

Year	Number of Properties Remediated
2004	326
2005 *	212
2006 *	65
2008	3
2013	21
2014	4
2015	2
Total	633

* ASARCO completed the remediation of 62 properties in 2005 and 38 properties in 2006 (100 properties total) in accordance with the Consent Decree. These actions have been combined with EPA actions for a total of properties remediated in these years.

For the soil removals conducted in 2004 through 2008, the contaminated soil was transported to the ASARCO Globe Plant Site for disposal. This soil was placed with the soil removed during the ASARCO Globe Plant Site residential cleanup. ASARCO agreed to conduct all maintenance of the residential soils repository as part of the Globe Plant Site actions (EPA, 2008). Soils removed in 2013 through 2015 were transported to and disposed of as non-hazardous waste (based on waste characterization analysis) at the Denver and Arapahoe Disposal Site (DADS) in Aurora, Colorado, because the repository at the ASARCO Globe Site had been closed.

After placement of clean soil in the remediated residential yards, the property was landscaped in accordance with the homeowner-agreed-upon restoration plan. If sod was included in the restoration plan, then the property was watered for a 30-day period to establish the new sod.

Exterior lead based paint assessments were conducted at all properties that received soil removal due to elevated lead concentrations. A total of 312 properties met the criteria for lead based paint assessments. During the assessment, all structures including garages, fences, and sheds with chipping and peeling paint were tested for lead based paint. If peeling of lead based paint on the property was sufficient to cause recontamination of the soil above the action level, then an exterior lead based paint abatement was performed at the property. As a result of the assessments conducted, 128 homes received exterior lead based paint abatements. This work was performed in accordance with the Colorado “Regulation No. 19, Lead Based Paint Abatement.”

3.4 *Notices of Environmental Conditions and Annual Informational Letter*

The informational ICs specified in the ESD were implemented in 2014 and 2015 for 72 residential properties within OU1 where the property owner denied EPA access to sample and/or remove soil. A Notice of Potential Environmental Conditions was filed for residential properties where EPA has not sampled and a Notice of Environmental Conditions was filed for properties where soil removal was not conducted even though it was determined to be necessary based on EPA's soil sampling results for lead and/or arsenic. These notices are filed with the City and County of Denver Clerk and Records Office in the title records and serve to notify present, prospective, and future owners of the potential for elevated levels of lead or arsenic in the properties' soils. A copy of the filed notice was sent to the property owner of record.

In 2014 and 2015, EPA filed a Withdrawal Notice to effectively remove the Notice of Potential Environmental Conditions/Notice of Environmental Conditions on 17 properties. Three of these 17 properties had previously been remediated in 2008, so the Notice of Environmental Conditions was not required. For the remaining 14 properties, the owners came forward in 2014 prior to the signing of the ESD and agreed to give EPA access to sample and/or cleanup their properties. EPA conducted sampling at these properties from July through September 2014. Based on the sampling results, 3 of the 14 properties required cleanup, which was completed by October 2014. After these 3 properties were cleaned up, EPA filed a Withdrawal Notice on each of the 14 properties.

Starting in 2015, the annual informational letters which provides specific information the EPA has on each property and how to minimize contact and exposure to potentially contaminated soil have been sent to each owner of record, as well as each property address, for the 55 unaddressed properties. The EPA completed the annual mailing in June, 2015. CDPHE completed the 2016 annual mailing in September, 2016. CDPHE is responsible for the future annual mailings as part of ongoing operation and maintenance (O&M) of the OU1 remedy.

Table 2 identifies each property address where a Notice of Potential Environmental Conditions/Notice of Environmental Conditions or Withdrawal Notice has been filed. **Plate 1** shows the locations where the informational ICs are currently implemented.

4.0 *Chronology of Events*

The chronology of event for OU1 is provided as **Table 1**.

5.0 *Performance Standards and Construction Quality Control*

The community health program and the Residential Soil Removal had separate quality assurance (QA)/quality control (QC) plans. EPA approved both of these QA/QC plans. The QA/QC plans enabled EPA to determine all analytical results reported were adequate to ensure satisfactory implementation of the remedial action.

In addition, EPA performed a property audit to ensure all residential properties within the OU1 boundaries were identified in the site database. The original database was developed from the City of Denver's zoning maps. During the property audit each commercially zoned property was inspected to determine if it was being used as a residence. The audit identified additional 172 residences that were not included in the site database for the remedial action.

Table 2 summarizes by individual property the amount of soil excavated as part of the remedial action and its disposal location.

6.0 Final Inspection and Certifications

Throughout the remedial action, final inspections and certifications for soil removal were completed as each residential property was completed. Once the remedy at a property had been completed and approved by homeowner, EPA and CDPHE conducted the final inspection. After the final inspection, EPA issued a letter to the homeowner certifying the remedial action had been completed at their property.

EPA conducted monitoring of the workers performing the remedy throughout the remedial action. Personal air monitoring results showed no elevated exposure to lead or arsenic. Worker biomonitoring data showed no elevated concentrations of lead and/or arsenic.

7.0 Operation & Maintenance Activities

O&M activities are required for the institutional controls added to the OU1 remedy via the 2014 ESD. O&M activities include 1) monitoring the ICs, 2) reviewing property records for the properties that have either a recorded Notice of Potential Environmental Conditions or a recorded Notice of Environmental Conditions, and 3) preparing and mailing the annual informational letter. Further detail relating to the completion of O&M activities can be found in the *Institutional Control Implementation and Assessment Plan* (CB&I, 2016).

An evaluation of the ICs protectiveness will also be completed as part of the recurring CERCLA FYRs to be conducted for the VB/I-70 Site. FYRs are required because the arsenic and/or lead concentration present/potentially present at the OU1 unaddressed properties do not allow for unlimited use/unrestricted exposure (EPA 2009, 2014b). EPA is responsible for conducting the FYRs. The next FYR will be conducted in 2019.

8.0 Contact Information

Exhibit 2 contains the contact information for the primary personnel involved in implementing the OU1 remedial action:

Exhibit 2. Contact Information

Position	Contact Information
Remedial Project Manager	Dania Zinner EPA (8EPR-SR) 1595 Wynkoop St. Denver, CO 80202 Phone: 303-312-7122 Email: zinner.dania@epa.gov
Soil Removal Project Engineer	Mary Darling U.S. Army Corps of Engineers Omaha District Rapid Response Program Offutt AFB, NE 68113 Phone: 402-995-2027 Email: mary.n.darling@usace.army.mil
CDPHE Project Manager	Fonda Apostolopoulos Environmental Health Department City and County of Denver 201 W. Colfax Ave. Dept. 1009 Denver, CO 80202 Phone: 303-692-3411 Email: fonda.apostolopoulos@state.co.us
Working Group Facilitator/Stakeholder Assessment	George Weber George Weber Environmental, Inc. 1275 Chambers Drive Boulder, CO 80305 Phone: 303-494-8572 Email: gw@gwenvironmental.com

9.0 References

ASARCO LLC. 2006. *Remedial Action Notice of Completion Report, Operable Unit One, Vasquez Boulevard/Interstate 70 Superfund Site, Denver, Colorado*. June.

CB&I Federal Services LLC (CB&I). 2015. *Final Sampling and Construction Site Report Addendum*. Report amended by CB&I for USACE, Omaha District, Contract No. W9128F-12-D-0003. November.

CB&I. 2016. *Institutional Control Implementation and Assessment Plan*. Prepared for USACE, Omaha District, Contract No. W9128F-12-D-0003. October.

Colorado Climate Center. 2000. Available on the web at <http://ccc.atmos.colostate.edu/>. Last updated on September 8, 2004.

Colorado Department of Human Health and Environment (CDPHE). 2016. Asarco Inc. — Globe Plant webpage available at: <https://www.colorado.gov/pacific/cdphe/asarco-globe>. Accessed on October 26, 2016.

Environmental Protection Agency (EPA). 1994. *Revised Interim Soil Lead Guidance for CERCLA Sites and RCRA Corrective Action Facilities*. U.S. Environmental Protection Agency, OSWER Directive 9355.4-12. July.

EPA. 1998 – 2015. VB/I-70 Project Analytical & Residential Database.

EPA. 2001 a. Baseline Human Health Risk Assessment. Vasquez Boulevard and I-70 Superfund Site Denver, CO. June 2001. Produced by the USEPA with technical assistance from Syracuse Research Corporation.

EPA. 2001 b. Remedial Investigation Report. Vasquez Boulevard/I-70 Site. Operable Unit 1. Report prepared by Washington Group International for USEPA Region VIII. July, 2001.

EPA. 2001 c. *Baseline Human Health Risk Assessment, Vasquez Boulevard and I-70 Superfund Site, Denver, CO*. August.

EPA. 2003. *Record of Decision, Vasquez Boulevard/Interstate 70 Superfund Site, Operable Unit 1 Residential Soils*. September.

EPA. 2004. *Remedial Design Work Plan for Soil Sampling and Remediation Program, Operable Unit 1, Vasquez Boulevard/Interstate 70 Superfund Site, Denver, Colorado*. Originally prepared by MFG, Inc. and Tetra Tech EM Inc. Edited by Project Resources Inc. July.

EPA. 2008. *Remedial Action Report, Vasquez Boulevard/I-70 Superfund Site, CERCLIS ID CO0002259588, Operable Unit 01- Residential Soils*. September.

EPA. 2009. *First Five-Year Review, Vasquez Boulevard/I-70 Superfund Site, City and County of Denver, Colorado*. September.

EPA. 2011. *Close Out Procedures for National Priorities List Sites*, OSWER Directive 9320.2-22. Office of Superfund Remediation and Technology Innovation. May.

EPA. 2013. *Remedial Design Work Plan for Soil Sampling and Remediation Program, Operable Unit 1, Vasquez Boulevard/Interstate 70 Superfund Site, Denver, Colorado*. Originally prepared by MFG, Inc. and Tetra Tech EM Inc. Edited by Shaw Environmental & Infrastructure, Inc. July.

EPA. 2014 a. *Explanation of Significant Differences, Operable Unit 1, Vasquez Boulevard/Interstate 70, City and County of Denver, Colorado*. September.

EPA. 2014 b. *Second Five-Year Review, Vasquez Boulevard/I-70 Superfund Site, City and County of Denver, Colorado, CERCLIS ID CO0002259588*. September.

MFG Inc. (MFG). 2001. *Feasibility Study Report for Operable Unit 1, Vasquez Boulevard/Interstate 70 Superfund Site, Denver, Colorado*. October.

Project Resource Inc. (PRI). 2007. *Final Site Report, Vasquez Boulevard/Interstate 70, Denver Colorado*. Prepared for USACE, Omaha District, USACE Contract No. W9128F-04-D-0029. November.

PRI. 2008. *Final Site Report Addendum Number 1, Vasquez Boulevard/Interstate 70, Denver Colorado*. Prepared for USACE, Omaha District, USACE Contract No. W9128F-04-D-0029 TO 01. August.

U.S. District Court for the State of Colorado (USDC). 2004 *Consent Decree, United States of America and State of Colorado vs ASARCO Incorporated*. January.

Washington Group International (WGI). 2001. *Remedial Investigation Report, Vasquez Boulevard/I-70 Superfund Site, Final*. July.

TABLES

TABLE 1 CHRONOLOGY OF EVENTS
VB/I-70 OU1 Superfund Site
Denver, Colorado

Date	Event
July 1993	State of Colorado and ASARCO Inc. entered into a consent decree for the Globe Superfund Site. As part of that settlement agreement, ASARCO agreed to remediate soils in residential properties surrounding the Globe Plant where levels of cadmium, lead, and/or arsenic exceeded acceptable limits established by the State
1997	CDPHE began a limited soil sampling program in the Elyria and Swansea neighborhoods in the future VB/I-70 Superfund Site
1998	CDPHE requested EPA participation in the VB/I-70 project. EPA mobilized an Emergency Response team to conduct an extensive soil sampling effort and a TCRA for the properties where soil posed immediate health risks to local residents
March – August 1998	EPA conducted Phase I and Phase II soil sampling on residential properties
August 1998	EPA formed a working group of stakeholders
September 1998	EPA issued an Action Memorandum for a TCRA
October – November 1998	EPA conducted a TCRA at 18 properties
July 22, 1999	EPA placed the VB/I-70 Site on the NPL
August 1999 – November 2000	EPA conducted Phase III soil sampling/RI
2000	EPA conducted a TCRA at an additional 30 properties as a result of Phase II sampling
2001	RI and FS Reports finalized
March 6, 2003	EPA issued an Action Memorandum for a NTCRA
March 14, 2003	Design completed for the soil removal component of the remedy
March 27, 2003	Design completed for the community health program of the remedy
May 2003	EPA released the revised Proposed Plan outlining its preferred cleanup option
July 2003 – March 2004	EPA conducted a NTCRA at 133 properties
September 25, 2003	ROD signed
January 21, 2004	Consent Decree finalized between ASARCO, CDPHE, and EPA
March 31, 2004	Remedial action started
April 2004	Soil removal contractor mobilized for 2004 construction season
July – December 2004	Development of the community health program
December 2004	Soil removal contractor demobilized for 2004 construction season
January 2005	Training of the community health workers completed
February 2005	Soil removal contractor mobilized for 2005 construction season
	First home visit conducted for the community health program
June 2005 – September 2006	Biomonitoring clinics conducted for the community health program
December 2005	Soil removal contractor demobilized for 2005 construction season
2006	ASARCO completed soil removal from 100 properties per the Consent Decree
February 2006	Soil removal contractor mobilized for 2006 construction season
September 2006	Soil removal contractor demobilized for 2006 construction season
2007	Final Site Report signed (covers soil sampling and removal activities conducted in 2004 through 2006 as part of the remedial action)
March – August 2007	Second round of home visits completed for the community health program
2008	Community health program completed

TABLE 1 CHRONOLOGY OF EVENTS
VB/I-70 OU1 Superfund Site
Denver, Colorado

Date	Event
August 2008	Final Site Report Addendum signed (covers soil sampling and removal activities conducted in 2008 as part of the remedial action)
September 30, 2009	First FYR Report signed
July 2012 – September 2013	Additional soil sampling conducted at previously unaddressed properties
May – June 2013	Last chance letter sent to owners of properties not previously sampled or cleaned up
July 2013	Revised Final Sampling and Analysis Work Plan signed
August 2013 – June 2015	Soil remediation completed at previously unaddressed properties
June 2014 – July 2015	Notices of Environmental Conditions filed at the City & County of Denver Clerk and Recorder's Office for unaddressed properties
September 2014	ESD signed for OU1
	Second FYR Report signed
June 2015	EPA completed annual mailing of informational letters
November 2015	Final Sampling and Construction Site Report Addendum signed (covers soil sampling and removal activities conducted in 2012 through 2015 as part of the remedial action)
September 2016	CDPHE completed annual mailing of informational letters

Acronyms

CDPHE	Colorado Department of Public Health and Environment
EPA	U.S. Environmental Protection Agency
ESD	Explanation of Significant Differences
FS	Feasibility Study
FYR	Five Year Review
NTCRA	Non-Time Critical Removal Action
NPL	EPA Superfund National Priorities List
OU1	Operable Unit 1
RI	Remedial Investigation
ROD	Record of Decision
TCRA	Time Critical Removal Action
VB/I-70	Vasquez Boulevard and Interstate 70

TABLE 2 PROPERTY STATUS
VB/I-70 OU1 Superfund Site
Denver, Colorado

Address	Soil Sampled	Highest Arsenic Sample Results (ppm)	Average Lead Concentration (ppm)	Soil Removal Required	Soil Removal Complete	Soil Removal (sq ft)	Waste Soil Disposal Location	NEC Filed Recorded Date	NEC Filed Reception Number	NEC Withdrawal Recorded Date	NEC Withdrawal Reception Number	Notes
1024 E 34TH ST	Yes	24	170	No								
1225 MARTIN LUTHER KING BLVD	Yes	5	744	Yes	2013	1012	DADS, Aurora, CO					
1227 MARTIN LUTHER KING BLVD	Yes	6	452	Yes	2004							
1233 BRUCE RANDOLPH AVE	Yes	11	590	Yes	2006	1714	ASARCO Globe Site, Denver, CO					
1239 BRUCE RANDOLPH AVE	Yes	10	427	Yes	2006	4036	ASARCO Globe Site, Denver, CO					
1524 E 35TH AVE	Yes	100	390	Yes	2005	507	ASARCO Globe Site, Denver, CO					
1526 E 35TH AVE	No							6/25/2014	2014074078			
1615 BRUCE RANDOLPH AVE	Yes	7	680	Yes	2006	2132	ASARCO Globe Site, Denver, CO					
1625 MARTIN LUTHER KING BLVD	Yes	5	705	Yes	2013	5178	DADS, Aurora, CO					
1631 MARTIN LUTHER KING BLVD	Yes	6	175	No								
1633 E 33RD AVE	No							6/25/2014	2014074079			
1635 E 33RD AVE	Yes	7	527	Yes	2005	638	ASARCO Globe Site, Denver, CO					
1717 E 36TH AVE	Yes	9	590	Yes	2003							
1721-1739 MARTIN LUTHER KING BLVD	Yes	7	477	Yes	2006	4658	ASARCO Globe Site, Denver, CO					
1807 E 33RD AVE	Yes	8	400	Yes	2005	NA						
1813-1815 MARTIN LUTHER KING BLVD	Yes	6	184	No								
1815 E 36TH AVE	Yes	13	592	Yes	2003	NA						
1819 MARTIN LUTHER KING BLVD	Yes	5	247	No								
1828 E 36TH AVE	Yes	7	423	Yes	2005	NA						
1854 E 48TH AVE	Yes	6	240	No								
1903 BRUCE RANDOLPH AVE	Yes	14	416	Yes	2004	NA						
1911 BRUCE RANDOLPH AVE	Yes	15	401	Yes	2006	1668	ASARCO Globe Site, Denver, CO					
2101 E 37TH ST	Yes	86	193	Yes	2013	9163	DADS, Aurora, CO					
2222 E 37TH AVE	Yes	79	190	Yes	2005	NA						
2626 BRUCE RANDOLPH AVE	No							6/25/2014	2014074080			
2736 E 44TH AVE	No							6/25/2014	2014074081			
2904 BRUCE RANDOLPH AVE	Yes	5	50	No								
3120 E 47TH AVE	Yes	190	142	Yes	2004	5024	ASARCO Globe Site, Denver, CO					
3200 RACE ST	Yes	113	215	Yes	2004	5402	ASARCO Globe Site, Denver, CO					
3201 FILLMORE ST	Yes	93	159	Yes	2004	5334	ASARCO Globe Site, Denver, CO					
3201 GAYLORD ST	Yes	81	311	Yes	2003	NA						

TABLE 2 PROPERTY STATUS
VB/I-70 OU1 Superfund Site
Denver, Colorado

Address	Soil Sampled	Highest Arsenic Sample Results (ppm)	Average Lead Concentration (ppm)	Soil Removal Required	Soil Removal Complete	Soil Removal (sq ft)	Waste Soil Disposal Location	NEC Filed Recorded Date	NEC Filed Reception Number	NEC Withdrawal Recorded Date	NEC Withdrawal Reception Number	Notes
3201 RACE ST	Yes	177	370	Yes	2005	NA						
3201 YORK ST	Yes	232	517	Yes	2004	NA						
3209 FILLMORE ST	Yes	179	230	Yes	2004	NA						
3209 GAYLORD ST	Yes	232	669	Yes	2003	NA						
3209 HIGH ST	Yes	92	588	Yes	2004	2634	ASARCO Globe Site, Denver, CO					
3210 CLAYTON ST	Yes	5	535	Yes	2013	4162	DADS, Aurora, CO					
3211 CLAYTON ST	Yes	340	277	Yes	2005	3312	ASARCO Globe Site, Denver, CO					
3211 STEELE ST	Yes	120	247	Yes	2005	NA						
3212 SAINT PAUL ST	Yes	135	355	Yes	2005	3716	ASARCO Globe Site, Denver, CO					
3213 STEELE ST	Yes	120	247	Yes	2005	NA						
3214 GAYLORD ST	Yes	12	847	Yes	2004	NA						
3215 FILLMORE ST	Yes	103	218	Yes	2004	NA						
3215 JOSEPHINE ST	Yes	280	220	Yes	2005	3364	ASARCO Globe Site, Denver, CO					
3215 STEELE ST	Yes	120	247	Yes	2005	10865	ASARCO Globe Site, Denver, CO					
3215 VINE ST	Yes	140	277	Yes	2005	NA						
3216 COLUMBINE ST	Yes	95	167	Yes	2005	2599	ASARCO Globe Site, Denver, CO					
3216 JOSEPHINE ST	Yes	95	209	Yes	2004	NA						
3216 VINE ST	Yes	114	191	Yes	2004	NA						
3217 GAYLORD ST	Yes	710	697	Yes	2004	NA						
3217 STEELE ST	Yes	120	247	Yes	2005	NA						
3219 ADAMS ST	Yes	5	138	No								
3219 STEELE ST	Yes	120	247	Yes	2005	NA						
3220 COOK ST	Yes	4	86	No								
3220 FILLMORE ST	Yes	131	231	Yes	2004	3024	ASARCO Globe Site, Denver, CO					
3220 FRANKLIN ST	Yes	7	210	No								
3220 YORK ST	Yes	122	366	Yes	2004	NA						
3221 FILLMORE ST	Yes	153	361	Yes	2004	NA						
3222 JOSEPHINE ST	Yes	94	151	Yes	2004	NA						
3225 E 38TH ST	Yes	18	154	No				7/24/2014	2014088508	11/20/2014	2014141638	
3225 MARION ST	Yes	26	515	Yes	2004	NA						
3226 CLAYTON ST	Yes	28	416	Yes	2013	3565	DADS, Aurora, CO					
3226 GAYLORD ST	Yes	72	242	Yes	2004	NA						
3227 ADAMS ST	Yes	85	170	Yes	2004	NA						
3227 GAYLORD ST	Yes	241	256	Yes	2003	NA						
3227 MARION ST	Yes	141	411	Yes	2004	NA						
3227 MILWAUKEE ST #5	No							6/25/2014	2014074082			
3228 GILPIN ST	Yes	220	313	Yes	2005	NA						
3228 JOSEPHINE ST	Yes	79	245	Yes	2004	NA						
3229 COLUMBINE ST	Yes	170	153	Yes	2005	1954	ASARCO Globe Site, Denver, CO					
3230 COLUMBINE ST	Yes	107	155	Yes	2005	8079	ASARCO Globe Site, Denver, CO					

TABLE 2 PROPERTY STATUS
VB/I-70 OU1 Superfund Site
Denver, Colorado

Address	Soil Sampled	Highest Arsenic Sample Results (ppm)	Average Lead Concentration (ppm)	Soil Removal Required	Soil Removal Complete	Soil Removal (sq ft)	Waste Soil Disposal Location	NEC Filed Recorded Date	NEC Filed Reception Number	NEC Withdrawal Recorded Date	NEC Withdrawal Reception Number	Notes
3230 ELIZABETH ST	Yes	6	403	Yes	2005	1463	ASARCO Globe Site, Denver, CO					
3230 FRANKLIN ST	Yes	7	624	Yes	2014	1253	DADS, Aurora, CO	6/25/2014	2014074083	2/12/2015	2015016715	
3230 GAYLORD ST	Yes	364	409	Yes	2003	NA						
3230 SAINT PAUL ST	Yes	7	414	Yes	2014	6640	DADS, Aurora, CO	6/27/2014	2014075912	2/12/2015	2015016714	
3231 BRUCE RANDOLPH AVE	Yes	11	120	No								
3232 CLAYTON ST	Yes	130	140	Yes	2006	3473	ASARCO Globe Site, Denver, CO					
3232 YORK ST	Yes	29	169	No								
3232-3234 FRANKLIN ST	Yes	4	81	No				6/25/2014	2014074084	11/20/2014	2014141647	
3233 GILPIN ST	Yes	20	461	Yes	2005	NA						
3233 MARION ST	Yes	6	417	Yes	2004	1157	ASARCO Globe Site, Denver, CO					
3234 ELIZABETH ST	Yes	6	466	Yes	2005	NA						
3239 MILWAUKEE ST	Yes	8	196	No								
3240 WILLIAMS ST	Yes	6	146	No				6/25/2014	2014074085	11/20/2014	2014141641	
3240 YORK ST	Yes	5	443	Yes	2005	NA						
3241 GAYLORD ST	Yes	170	377	Yes	2005	NA						
3242 WILLIAMS ST	No							6/25/2014	2014074105			
3244 HIGH ST	No							6/25/2014	2014074106			
3244 VINE ST	Yes	127	208	Yes	2004	NA						
3245 GAYLORD ST	Yes	156	232	Yes	2004	NA						
3245 JOSEPHINE ST	Yes	265	273	Yes	2003	NA						
3246 ELIZABETH ST	Yes	5	409	Yes	2013	1896	DADS, Aurora, CO					
3246-3250 FRANKLIN ST	Yes	6	256	No				6/25/2014	2014074107	11/20/2014	2014141646	
3247 MILWAUKEE ST	Yes	27	118	No								
3248 HIGH ST	Yes	22	403	Yes	2005	NA						
3249 MILWAUKEE ST	Yes	4	86	No								
3250 FILLMORE ST	Yes	78	152	Yes	2005	3084	ASARCO Globe Site, Denver, CO					
3250 GAYLORD ST	Yes	144	312	Yes	2004	NA						
3250 VINE ST	Yes	77	205	Yes	2004	NA						
3251 YORK ST	Yes	11	170	No								
3251 YORK ST	Yes	6	120	No								
3254-3256 FRANKLIN ST	Yes	7	210	No				6/25/2014	2014074108	11/20/2014	2014141645	
3255 MILWAUKEE ST	Yes	10	117	No								
3255 WILLIAMS ST	Yes	28	470	Yes	2006	2479	ASARCO Globe Site, Denver, CO					
3257 WILLIAMS ST	Yes	28	470	Yes	2006	NA						
3258 YORK ST	Yes	80	307	Yes	2004	3152	ASARCO Globe Site, Denver, CO					
3265 MADISON ST	Yes	100	171	Yes	2005	7292	ASARCO Globe Site, Denver, CO					
3301 SAINT PAUL ST	Yes	94	152	Yes	2004	NA						
3303 GAYLORD ST	Yes	94	236	Yes	2004	5823	ASARCO Globe Site, Denver, CO					
3307 CURTIS ST	Yes	6	474	Yes	2013	1294	DADS, Aurora, CO					
3309 GAYLORD ST	Yes	670	247	Yes	2004	3235	ASARCO Globe Site, Denver, CO					

TABLE 2 PROPERTY STATUS
VB/I-70 OU1 Superfund Site
Denver, Colorado

Address	Soil Sampled	Highest Arsenic Sample Results (ppm)	Average Lead Concentration (ppm)	Soil Removal Required	Soil Removal Complete	Soil Removal (sq ft)	Waste Soil Disposal Location	NEC Filed Recorded Date	NEC Filed Reception Number	NEC Withdrawal Recorded Date	NEC Withdrawal Reception Number	Notes
3310 ELIZABETH ST	Yes	78	147	Yes	2005	6029	ASARCO Globe Site, Denver, CO					
3310 SAINT PAUL ST	Yes	215	287	Yes	2004							
3311 BRUCE RANDOLPH AVE	Yes	98	139	Yes	2004	2565	ASARCO Globe Site, Denver, CO					
3311 CURTIS ST	Yes	5	298	No								
3311 SAINT PAUL ST	Yes	90	237	Yes	No			7/24/2014	2014088507			
3313 CURTIS ST	Yes	9	407	Yes	2006	1882	ASARCO Globe Site, Denver, CO					
3314 FRANKLIN ST	Yes	33	397	No								
3314 JOSEPHINE ST	Yes	86	232	Yes	2004	6288	ASARCO Globe Site, Denver, CO					
3314 LAFAYETTE ST	Yes	6	470	Yes	2004	NA						
3315 CLAYTON ST	Yes	111	157	Yes	2004	NA						
3315 GAYLORD ST	Yes	92	184	Yes	2004	NA						
3315 RACE ST	Yes	72	259	Yes	2004	NA						
3316 LAFAYETTE ST	Yes	24	468	Yes	2005	NA						
3317 YORK ST	Yes	80	408	Yes	2005	NA						
3318 FRANKLIN ST	Yes	13	408	Yes	2004	NA						
3318 HIGH ST	Yes	79	165	Yes	2004	NA						
3319 YORK ST	Yes	87	245	Yes	2005	NA						
3321 ELIZABETH ST	Yes	65	660	Yes	2003	NA						
3321 GAYLORD ST	Yes	159	268	Yes	2004	NA						
3322 GILPIN ST	Yes	85	404	Yes	2005	NA						
3323 LAFAYETTE ST	Yes	10	440	Yes	2005	NA						
3324 ELIZABETH ST	No							6/25/2014	2014074109			
3325 LAFAYETTE ST	Yes	10	440	Yes	2005	NA						
3326 MARION ST	No							6/25/2014	2014074110			
3326 WILLIAMS ST	Yes	18	657	Yes	2003	NA						
3328 RACE ST	Yes	111	235	Yes	2004	NA						
3329 HIGH ST	Yes	285	599	Yes	2003	NA						
3329 SAINT PAUL ST	Yes	217	237	Yes	2005	3296	ASARCO Globe Site, Denver, CO					
3331 CLAYTON ST	Yes	37	122	No								
3332 LAFAYETTE ST	Yes	170	466	Yes	2005	NA						
3332 RACE ST	Yes	81	225	Yes	2004	NA						
3333 GARFIELD ST	Yes	7	137	No								
3333 HIGH ST	Yes	12	463	Yes	2003	NA						
3333 SAINT PAUL ST	Yes	238	390	Yes	2005	3064	ASARCO Globe Site, Denver, CO					
3334 COOK ST	Yes	7	70	No								
3335 ADAMS ST	Yes	320	132	Yes	2005	3756	ASARCO Globe Site, Denver, CO					
3335 GILPIN ST	Yes	118	395	Yes	2004	3092	ASARCO Globe Site, Denver, CO					
3337 HIGH ST	Yes	126	453	Yes	2003	NA						
3337 STEELE ST	Yes	241	410	Yes	2003	NA						
3337 WILLIAMS ST	Yes	18	457	Yes	2005	NA						

TABLE 2 PROPERTY STATUS
VB/I-70 OU1 Superfund Site
Denver, Colorado

Address	Soil Sampled	Highest Arsenic Sample Results (ppm)	Average Lead Concentration (ppm)	Soil Removal Required	Soil Removal Complete	Soil Removal (sq ft)	Waste Soil Disposal Location	NEC Filed Recorded Date	NEC Filed Reception Number	NEC Withdrawal Recorded Date	NEC Withdrawal Reception Number	Notes
3338 COLUMBINE ST	Yes	81	323	Yes	2005	3493	ASARCO Globe Site, Denver, CO					
3338 RACE ST	Yes	224	348	Yes	2013	2836	DADS, Aurora, CO					
3339 CURTIS ST	Yes	7	270	No								
3339 ELIZABETH ST	Yes	158	1131	Yes	2003	NA						
3339 WILLIAMS ST	Yes	18	457	Yes	2005	NA						
3341 JOSEPHINE ST	Yes	147	316	Yes	2004	NA						
3341 LAWRENCE ST	Yes	7	220	No								
3342-3344 MARION ST	Yes	5	114	No								
3343 ELIZABETH ST	Yes	50	769	Yes	2003	NA						
3343 SAINT PAUL ST	Yes	160	390	Yes	2005	4852	ASARCO Globe Site, Denver, CO					
3344 STEELE ST	Yes	82	357	Yes	2004	1921	ASARCO Globe Site, Denver, CO					
3344 VINE ST	Yes	178	234	Yes	2004							
3344 WILLIAMS ST	Yes	186	341	Yes	2004	4799	ASARCO Globe Site, Denver, CO					
3345 GAYLORD ST	Yes	73	187	Yes	2005	NA						
3345 STEELE ST	Yes	220	380	Yes	2005	4743	ASARCO Globe Site, Denver, CO					
3346 GILPIN ST	Yes	151	564	Yes	2003	NA						
3347 JOSEPHINE ST	Yes	97	234	Yes	2004	NA						
3349 HIGH ST	Yes	43	448	Yes	2004	NA						
3349 SAINT PAUL ST	Yes	160	390	Yes	2005	NA						
3350 COLUMBINE ST	Yes	307	357	Yes	2003	NA						
3350 GILPIN ST	Yes	293	511	Yes	2003	NA						
3350 MILWAUKEE ST	Yes	214	241	Yes	2004	NA						
3351 DOWNING ST	Yes	7	1715	Yes	2013	687	DADS, Aurora, CO					
3351 GAYLORD ST	Yes	470	477	Yes	No			6/25/2014	2014074066			
3351 LAFAYETTE ST	Yes	3	143	No								
3351 VINE ST	Yes	28	421	Yes	2004	3174	ASARCO Globe Site, Denver, CO					
3357 GAYLORD ST	Yes	88	271	Yes	2004	5285	ASARCO Globe Site, Denver, CO					
3358 MILWAUKEE ST	Yes	150	197	Yes	2005	4540	ASARCO Globe Site, Denver, CO					
3359 HIGH ST	Yes	6	428	Yes	2013	3169	DADS, Aurora, CO					
3359 STEELE ST	Yes	99	269	Yes	2004	4740	ASARCO Globe Site, Denver, CO					
3375 E 36TH AVE	Yes	170	80	Yes	2006	6883	ASARCO Globe Site, Denver, CO					
3400 HUMBOLDT ST	Yes	5	607	Yes	2006	1668	ASARCO Globe Site, Denver, CO					
3401 BRUCE RANDOLPH AVE	Yes	371	320	Yes	2003	NA						
3401 RACE ST	Yes	6	617	Yes	2005	NA						
3401 VINE ST	Yes	90	330	Yes	2004	2426	ASARCO Globe Site, Denver, CO					

TABLE 2 PROPERTY STATUS
VB/I-70 OU1 Superfund Site
Denver, Colorado

Address	Soil Sampled	Highest Arsenic Sample Results (ppm)	Average Lead Concentration (ppm)	Soil Removal Required	Soil Removal Complete	Soil Removal (sq ft)	Waste Soil Disposal Location	NEC Filed Recorded Date	NEC Filed Reception Number	NEC Withdrawal Recorded Date	NEC Withdrawal Reception Number	Notes
3404 RACE ST	Yes	15	457	Yes	2004	15396	ASARCO Globe Site, Denver, CO					
3405 GILPIN ST	Yes	6	1207	Yes	2006	687	ASARCO Globe Site, Denver, CO					
3407 COLUMBINE ST	Yes	220	297	Yes	2006	2120	ASARCO Globe Site, Denver, CO					
3408 MILWAUKEE ST	Yes	343	715	Yes	2003	NA						
3408 VINE ST	Yes	92	203	Yes	2004	NA						
3411 COLUMBINE ST	Yes	220	297	Yes	2006	NA						
3411 VINE ST	Yes	224	244	Yes	2004	2410	ASARCO Globe Site, Denver, CO					
3414 LAFAYETTE ST	Yes	23	482	Yes	2004	NA						
3415 COLUMBINE ST	Yes	108	164	Yes	2004	4403	ASARCO Globe Site, Denver, CO					
3415 STEELE ST	Yes	70	309	Yes	2004	3727	ASARCO Globe Site, Denver, CO					
3415 WILLIAMS ST	Yes	18	594	Yes	2003	NA						
3416 DOWNING ST	Yes	6	673	Yes	2005	NA						
3419 HIGH ST	Yes	94	209	Yes	2004	2420	ASARCO Globe Site, Denver, CO					
3419 MARION ST	Yes	7	527	Yes	2005	NA						
3420 FILLMORE ST	Yes	86	112	Yes	2004	4831	ASARCO Globe Site, Denver, CO					
3420 RACE ST	Yes	72	204	Yes	2004	NA						
3421 ADAMS ST	Yes	6	72	No								
3421 COLUMBINE ST	Yes	126	232	Yes	2004	4808	ASARCO Globe Site, Denver, CO					
3421 ELIZABETH ST	Yes	141	311	Yes	2005	4975	ASARCO Globe Site, Denver, CO					
3421 FRANKLIN ST	Yes	17	460	Yes	2006	3487	ASARCO Globe Site, Denver, CO					
3421 HARRISON ST	Yes	158	84	Yes	2005	2469	ASARCO Globe Site, Denver, CO					
3421 JOSEPHINE ST	Yes	39	407	Yes	2005	3434	ASARCO Globe Site, Denver, CO					
3421 VINE ST	Yes	297	250	Yes	No			6/25/2014	2014074067			
3422 GAYLORD ST	Yes	105	150	Yes	2005	NA						
3423 MILWAUKEE ST	Yes	410	265	Yes	2003	NA						
3423 SAINT PAUL ST	Yes	316	227	Yes	2003	NA						
3424 FRANKLIN ST	Yes	59	403	Yes	2004	NA						
3424 GAYLORD ST	Yes	78	287	Yes	2005	NA						
3424 HIGH ST	Yes	23	313	No								
3424 MARION ST	Yes	31	492	Yes	2004	2577	ASARCO Globe Site, Denver, CO					
3424 YORK ST	Yes	97	241	Yes	2004	2015	ASARCO Globe Site, Denver, CO					
3425 COOK ST	Yes	79	186	Yes	2005	5339	ASARCO Globe Site, Denver, CO					
3425 LAFAYETTE ST	Yes	100	422	Yes	2004	1539	ASARCO Globe Site, Denver, CO					

TABLE 2 PROPERTY STATUS
VB/I-70 OU1 Superfund Site
Denver, Colorado

Address	Soil Sampled	Highest Arsenic Sample Results (ppm)	Average Lead Concentration (ppm)	Soil Removal Required	Soil Removal Complete	Soil Removal (sq ft)	Waste Soil Disposal Location	NEC Filed Recorded Date	NEC Filed Reception Number	NEC Withdrawal Recorded Date	NEC Withdrawal Reception Number	Notes
3426 RACE ST	Yes	177	431	Yes	2004	NA						
3426 WILLIAMS ST	Yes	20	161	No								
3427 HUMBOLDT ST	Yes	6	403	Yes	2004	NA						
3427 STEELE ST	Yes	209	194	Yes	2004	3463	ASARCO Globe Site, Denver, CO					
3427 VINE ST	Yes	214	316	Yes	2004	NA						
3428 MILWAUKEE ST	Yes	84	217	Yes	2005	2778	ASARCO Globe Site, Denver, CO					
3429 HARRISON ST	Yes	151	184	Yes	2005	4155	ASARCO Globe Site, Denver, CO					
3429 SAINT PAUL ST	Yes	136	189	Yes	2008	2221	ASARCO Globe Site, Denver, CO	6/25/2014	2014074068	9/16/2014	2014112637	After NEC filed, it was determined that this property had already been remediated in 2008, as per the Final Site Addendum. Therefore, the notice was withdrawn.
3430 JACKSON ST	Yes	76	77	Yes	No			6/25/2014	2014074069			
3430 WILLIAMS ST	Yes	45	460	Yes	2006	NA						
3431 VINE ST	Yes	198	344	Yes	2005	NA						
3432 JOSEPHINE ST	Yes	313	456	Yes	2003	NA						
3433 COOK ST	Yes	110	88	Yes	2005	3110	ASARCO Globe Site, Denver, CO					
3433 GILPIN ST	Yes	15	556	Yes	2003	NA						
3433 HUMBOLDT ST	Yes	97	429	Yes	2004	6359	ASARCO Globe Site, Denver, CO					
3434 GARFIELD ST	No							6/25/2014	2014074111			
3434 HUMBOLDT ST	Yes	114	477	Yes	2005	NA						
3434 SAINT PAUL ST	Yes	172	282	Yes	2004	3461	ASARCO Globe Site, Denver, CO					
3435 ADAMS ST	Yes	6	147	No								
3435 MARION ST	Yes	11	486	Yes	2005	NA						
3435 STEELE ST	Yes	87	472	Yes	2004	3292	ASARCO Globe Site, Denver, CO					
3437 ADAMS ST	Yes	5	144	No								
3437 GAYLORD ST	Yes	111	274	Yes	2004	3238	ASARCO Globe Site, Denver, CO					
3437 GILPIN ST	Yes	14	165	No								
3439 WILLIAMS ST	No							6/25/2014	2014074112			
3440 HARRISON ST	Yes	151	102	Yes	2004	5468	ASARCO Globe Site, Denver, CO					
3440 JACKSON ST	Yes	341	109	Yes	2003	NA						
3440 JOSEPHINE ST	Yes	182	239	Yes	2003	NA						
3440 LAWRENCE ST	Yes	420	317	Yes	2005	NA						
3441 GARFIELD ST	Yes	257	207	Yes	2003	NA						
3441 GILPIN ST VCNT	Yes											Sampled with 3437 Gilpin St; see data entry for 3437 Gilpin St for sampling results.
3441 SAINT PAUL ST	Yes	258	394	Yes	2003	NA						
3443 HUMBOLDT ST	Yes	6	430	Yes	2004	NA						

TABLE 2 PROPERTY STATUS
VB/I-70 OU1 Superfund Site
Denver, Colorado

Address	Soil Sampled	Highest Arsenic Sample Results (ppm)	Average Lead Concentration (ppm)	Soil Removal Required	Soil Removal Complete	Soil Removal (sq ft)	Waste Soil Disposal Location	NEC Filed Recorded Date	NEC Filed Reception Number	NEC Withdrawal Recorded Date	NEC Withdrawal Reception Number	Notes
3443 MADISON ST	Yes	99	136	Yes	2006	5601	ASARCO Globe Site, Denver, CO					
3444 GILPIN ST	Yes	36	445	Yes	2004	NA						
3445 GILPIN ST	Yes	47	138	No				6/25/2014	2014074113	11/20/2014	2014141644	
3445 MADISON ST	Yes	99	136	Yes	2006	NA						
3446 MILWAUKEE ST	Yes	208	147	Yes	2015	3000	DADS, Aurora, CO					
3446 VINE ST	Yes	76	167	Yes	2004	2910	ASARCO Globe Site, Denver, CO					
3447 DOWNING ST	Yes	14	220	No								
3447 HUMBOLDT ST	Yes	12	441	Yes	2004	NA						
3447 MADISON ST	Yes	99	136	Yes	2006	NA						
3447 SAINT PAUL ST	Yes	357	315	Yes	2003	NA						
3448 COLUMBINE ST	Yes	70	282	Yes	2005	3595	ASARCO Globe Site, Denver, CO					
3449 COOK ST	Yes	120	247	Yes	2006	9910	ASARCO Globe Site, Denver, CO					
3449 ELIZABETH ST	Yes	940	473	Yes	2005	3258	ASARCO Globe Site, Denver, CO					
3449 HIGH ST	Yes	132	268	Yes	2005	7299	ASARCO Globe Site, Denver, CO					
3449 JOSEPHINE ST	Yes	114	199	Yes	2004	2425	ASARCO Globe Site, Denver, CO					
3449 MONROE ST	Yes	140	263	Yes	2005	3986	ASARCO Globe Site, Denver, CO					
3450 GAYLORD ST	Yes	181	285	Yes	2005	NA						
3450 JACKSON ST	Yes	138	349	Yes	2004	NA						
3450 SAINT PAUL ST	Yes	264	573	Yes	2003	NA						
3450 STEELE ST	Yes	160	202	Yes	2004	2815	ASARCO Globe Site, Denver, CO					
3451 DOWNING ST	Yes	7	413	Yes	2005	NA						
3451 LAFAYETTE ST	Yes	16	401	Yes	2005	NA						
3452 JOSEPHINE ST	Yes	240	506	Yes	2003	NA						
3453 FRANKLIN ST	Yes	24	583	Yes	2003	NA						
3454 FRANKLIN ST	Yes	13	423	Yes	2006	775	ASARCO Globe Site, Denver, CO					
3455 JOSEPHINE ST	Yes	86	167	Yes	2004	5824	ASARCO Globe Site, Denver, CO					
3455 VINE ST	Yes	184	195	Yes	2004	4583	ASARCO Globe Site, Denver, CO					
3456 HUMBOLDT ST	Yes	8	523	Yes	2006	8747	ASARCO Globe Site, Denver, CO					
3456 MADISON ST	Yes	115	219	Yes	2004	NA						
3457 STEELE ST	Yes	179	140	Yes	2004	5379	ASARCO Globe Site, Denver, CO					
3458 ADAMS ST	Yes	150	188	Yes	2005	6654	ASARCO Globe Site, Denver, CO					
3458 GAYLORD ST	Yes	74	180	Yes	2005	6071	ASARCO Globe Site, Denver, CO					
3458 STEELE ST	Yes	71	116	Yes	2005	4669	ASARCO Globe Site, Denver, CO					

TABLE 2 PROPERTY STATUS
VB/I-70 OU1 Superfund Site
Denver, Colorado

Address	Soil Sampled	Highest Arsenic Sample Results (ppm)	Average Lead Concentration (ppm)	Soil Removal Required	Soil Removal Complete	Soil Removal (sq ft)	Waste Soil Disposal Location	NEC Filed Recorded Date	NEC Filed Reception Number	NEC Withdrawal Recorded Date	NEC Withdrawal Reception Number	Notes
3460 HUMBOLDT ST	Yes	8	523	Yes	2006	NA						
3500 BRUCE RANDOLPH AVE	No							6/25/2014	2014074114			
3500 GAYLORD ST	Yes	165	381	Yes	2004	5378	ASARCO Globe Site, Denver, CO					
3501 GARFIELD ST	Yes	157	309	Yes	2005	3912	ASARCO Globe Site, Denver, CO					
3501 JACKSON ST	Yes	80	119	Yes	2005	3645	ASARCO Globe Site, Denver, CO					
3501 SAINT PAUL ST	Yes	76	280	Yes	2005	7695	ASARCO Globe Site, Denver, CO					
3505 HUMBOLDT ST	Yes	23	510	Yes	2004	4869	ASARCO Globe Site, Denver, CO					
3506 HUMBOLDT ST	Yes	10	240	No								
3506 HUMBOLDT ST	Yes	12	652	Yes	2013	8242	DADS, Aurora, CO					
3507 FRANKLIN ST	Yes	21	438	Yes	2004	2655	ASARCO Globe Site, Denver, CO					
3508 HUMBOLDT ST	Yes	54	410	Yes	2004	2085	ASARCO Globe Site, Denver, CO					
3508 RACE ST	Yes	91	241	Yes	2004	3211	ASARCO Globe Site, Denver, CO					
3510 HARRISON ST	Yes	84	173	Yes	2005	5931	ASARCO Globe Site, Denver, CO					
3510 SAINT PAUL ST	Yes	117	237	Yes	2005	3263	ASARCO Globe Site, Denver, CO					
3510 WILLIAMS ST	Yes	74	210	Yes	2004	2440	ASARCO Globe Site, Denver, CO					
3511 HUMBOLDT ST	Yes	164	575	Yes	2003	NA						
3511 LAFAYETTE ST	Yes	26	513	Yes	2004	1674	ASARCO Globe Site, Denver, CO					
3514 WILLIAMS ST	No							6/25/2014	2014074115			
3515 HARRISON ST	Yes	266	146	Yes	2003	NA						
3515 LAFAYETTE ST	Yes	154	598	Yes	2003	NA						
3515 MONROE ST	Yes	121	114	Yes	2004	2330	ASARCO Globe Site, Denver, CO					
3516 GILPIN ST	Yes	13	468	Yes	2005	NA						
3516 SAINT PAUL ST	Yes	219	300	Yes	2004	2935	ASARCO Globe Site, Denver, CO					
3517 DELGANY ST	Yes	19	501	Yes	2004	NA						
3517 YORK ST	Yes	100	213	Yes	2005	NA						
3518 MARION ST	Yes	19	417	Yes	No			6/25/2014	2014074070			
3518 WILLIAMS ST	Yes	53	283	No				6/25/2014	2014074116	11/20/2014	2014141640	
3519 HUMBOLDT ST	Yes	160	456	Yes	2004	1913	ASARCO Globe Site, Denver, CO					
3519 LAFAYETTE ST	Yes	19	591	Yes	2003	NA						
3520 HUMBOLDT ST	Yes	177	477	Yes	2004	1830	ASARCO Globe Site, Denver, CO					
3521 DELGANY ST	Yes	31	835	Yes	2003	NA						
3521 JOSEPHINE ST	Yes	250	344	Yes	2003	NA						

TABLE 2 PROPERTY STATUS
VB/I-70 OU1 Superfund Site
Denver, Colorado

Address	Soil Sampled	Highest Arsenic Sample Results (ppm)	Average Lead Concentration (ppm)	Soil Removal Required	Soil Removal Complete	Soil Removal (sq ft)	Waste Soil Disposal Location	NEC Filed Recorded Date	NEC Filed Reception Number	NEC Withdrawal Recorded Date	NEC Withdrawal Reception Number	Notes
3521 MILWAUKEE ST	Yes	164	195	Yes	2004	4800	ASARCO Globe Site, Denver, CO					
3522 MARION ST	Yes	34	636	Yes	2003	NA						
3523 LAFAYETTE ST	Yes	25	569	Yes	2003	NA						
3524 HUMBOLDT ST	Yes	93	436	Yes	2004	1924	ASARCO Globe Site, Denver, CO					
3524 VINE ST	Yes	113	124	Yes	2004	4550	ASARCO Globe Site, Denver, CO					
3524 WILLIAMS ST	Yes	176	430	Yes	2004	1528	ASARCO Globe Site, Denver, CO					
3525 HARRISON ST	Yes	140	160	Yes	2005	4954	ASARCO Globe Site, Denver, CO					
3526 GAYLORD ST	No							6/25/2014	2014074117			
3526 MARION ST	Yes	18	446	Yes	2004	1810	ASARCO Globe Site, Denver, CO					
3527 DELGANY ST	Yes	156	369	Yes	2004	5260	ASARCO Globe Site, Denver, CO					
3527 WILLIAMS ST	Yes	20	408	Yes	2004	1393	ASARCO Globe Site, Denver, CO					
3527 YORK ST	Yes	114	373	Yes	2005	NA						
3528 COLUMBINE ST	No							6/25/2014	2014074118			
3528 ELIZABETH ST	Yes	303	286	Yes	2003	NA						
3528 HUMBOLDT ST	Yes	77	328	Yes	2014	1383	DADS, Aurora, CO	6/25/2014	2014074071	2/12/2015	2015016716	This is a property that was part of a “side-by-side” duplex owned by one owner in the past and was split into two separate properties in February 2012. When the duplex was split, the City of Denver issued two new parcel ID #s for each half of the duplex. The two properties are 3528 and 3534 Humboldt St. EPA was not aware of the property split until after the NEC was filed only on 3528 Humboldt St.
3528 WILLIAMS ST	Yes	27	515	Yes	2004	1787	ASARCO Globe Site, Denver, CO					
3529 FRANKLIN ST	Yes	18	711	Yes	2003	NA						
3530 GAYLORD ST	Yes	102	184	Yes	2004	2628	ASARCO Globe Site, Denver, CO					
3530 MILWAUKEE ST	Yes	91	214	Yes	2006	4214	ASARCO Globe Site, Denver, CO					
3531 LAFAYETTE ST	Yes	149	624	Yes	2003	NA						
3532 FILLMORE ST	Yes	176	429	Yes	2004	3541	ASARCO Globe Site, Denver, CO					
3532 GARFIELD ST	Yes	190	214	Yes	2004	NA						
3532 VINE ST	Yes	104	214	Yes	2004	3294	ASARCO Globe Site, Denver, CO					
3533 HARRISON ST	Yes	136	119	Yes	2004	5077	ASARCO Globe Site, Denver, CO					
3533 MARION ST	Yes	26	440	Yes	2004	1056	ASARCO Globe Site, Denver, CO					

TABLE 2 PROPERTY STATUS
VB/I-70 OU1 Superfund Site
Denver, Colorado

Address	Soil Sampled	Highest Arsenic Sample Results (ppm)	Average Lead Concentration (ppm)	Soil Removal Required	Soil Removal Complete	Soil Removal (sq ft)	Waste Soil Disposal Location	NEC Filed Recorded Date	NEC Filed Reception Number	NEC Withdrawal Recorded Date	NEC Withdrawal Reception Number	Notes
3534 HUMBOLDT ST	Yes			Yes	2014	1262	DADS, Aurora, CO					See 3528 Humbolt St. data entry for sampling results. Note: Duplex with 3528 Humboldt St and cleaned up at same time as 3528 Humboldt St.
3534 MADISON ST	Yes	5	64	No								
3535 CLAYTON ST	Yes	303	188	Yes	2003	NA						
3535 STEELE ST	Yes	100	304	Yes	2004	2910	ASARCO Globe Site, Denver, CO					
3536 ELIZABETH ST	Yes	327	271	Yes	2003	NA						
3536 HARRISON ST	Yes	78	134	Yes	2004	NA						
3537 SAINT PAUL ST	Yes	47	521	Yes	2005	3435	ASARCO Globe Site, Denver, CO					
3538 GAYLORD ST	Yes	164	242	Yes	2004	2990	ASARCO Globe Site, Denver, CO					
3539 HUMBOLDT ST	Yes	163	455	Yes	2004	2293	ASARCO Globe Site, Denver, CO					
3539 WILLIAMS ST	Yes	6	647	Yes	2005	NA						
3540 COLUMBINE ST	Yes	71	156	Yes	2005	4253	ASARCO Globe Site, Denver, CO					
3540 JACKSON ST	Yes	90	208	Yes	2004	3843	ASARCO Globe Site, Denver, CO					
3540 RACE ST	Yes	76	138	Yes	2004	4941	ASARCO Globe Site, Denver, CO					
3540 SAINT PAUL ST	Yes	76	194	Yes	2005	3540	ASARCO Globe Site, Denver, CO					
3540-3546 HIGH ST	Yes	7	596	Yes	2006	1885	ASARCO Globe Site, Denver, CO					
3541 MILWAUKEE ST	Yes	319	690	Yes	2003	NA						
3541 STEELE ST	Yes	76	212	Yes	No			6/25/2014	2014074072			
3541 WILLIAMS ST	Yes	16	797	Yes	2003	NA						
3541-3547 COLUMBINE ST	No							6/25/2014	2014074119			
3542 VINE ST	Yes	274	264	Yes	2003	NA						
3544 GAYLORD ST	Yes	186	256	Yes	2005	NA						
3545 ELIZABETH ST	Yes	240	423	Yes	2004	4895	ASARCO Globe Site, Denver, CO					
3545 FILLMORE ST	Yes	5	91	No				6/25/2014	2014074120	11/20/2014	2014141648	
3545 FRANKLIN ST	Yes	19	402	Yes	2005	NA						
3545 RACE ST	Yes	14	187	No								
3545 STEELE ST	Yes	54	214	No				7/24/2014	2014088506	11/20/2014	2014141642	
3546 HUMBOLDT ST	Yes	207	384	Yes	2005	NA						
3547 BRIGHTON BLVD	Yes	6	433	Yes	2004	1532	ASARCO Globe Site, Denver, CO					
3547 SAINT PAUL ST	Yes	187	329	Yes	2005	2900	ASARCO Globe Site, Denver, CO					
3548 ELIZABETH ST	Yes	106	164	Yes	2004	2837	ASARCO Globe Site, Denver, CO					
3548 GILPIN ST	Yes	31	518	Yes	2005	NA						
3548 MARION ST	Yes	23	436	Yes	No			6/25/2014	2014074073			
3549 LAFAYETTE ST	Yes	14	603	Yes	2003	NA						

TABLE 2 PROPERTY STATUS
VB/I-70 OU1 Superfund Site
Denver, Colorado

Address	Soil Sampled	Highest Arsenic Sample Results (ppm)	Average Lead Concentration (ppm)	Soil Removal Required	Soil Removal Complete	Soil Removal (sq ft)	Waste Soil Disposal Location	NEC Filed Recorded Date	NEC Filed Reception Number	NEC Withdrawal Recorded Date	NEC Withdrawal Reception Number	Notes
3549 RACE ST	Yes	391	269	Yes	2003	NA						
3550 HUMBOLDT ST	Yes	23	402	Yes	2004	5889	ASARCO Globe Site, Denver, CO					
3550 SAINT PAUL ST	Yes	206	149	Yes	2005	3371	ASARCO Globe Site, Denver, CO					
3551 MILWAUKEE ST	Yes	383	904	Yes	2003	NA						
3552 ELIZABETH ST	Yes	288	253	Yes	2004	3728	ASARCO Globe Site, Denver, CO					
3552 MONROE ST	Yes	110	105	Yes	2008	4084	ASARCO Globe Site, Denver, CO	6/25/2014	2014074074	9/16/2014	2014112635	After NEC filed, it was determined that this property had already been remediated in 2008, as per the Final Site Addendum. Therefore, the notice was withdrawn/filed.
3553 LAFAYETTE ST	Yes	38	452	Yes	2005	NA						
3554 MARION ST	Yes	19	447	Yes	2006	5698	ASARCO Globe Site, Denver, CO					
3556 HARRISON ST	Yes	110	137	Yes	2005	8102	ASARCO Globe Site, Denver, CO					
3556 RACE ST	Yes	212	236	Yes	2005	NA						
3557 GAYLORD ST	Yes	488	369	Yes	2003	NA						
3559 GARFIELD ST	Yes	79	108	Yes	2004	NA						
3560 ELIZABETH ST	Yes	243	286	Yes	2003	NA						
3600 HARRISON ST	Yes	215	354	Yes	2004	6729	ASARCO Globe Site, Denver, CO					
3600 LAFAYETTE ST	Yes	10	259	No								
3600 SAINT PAUL ST	Yes	70	374	Yes	2004	8085	ASARCO Globe Site, Denver, CO					
3601 HARRISON ST	Yes	290	170	Yes	2005	5944	ASARCO Globe Site, Denver, CO					
3601 SAINT PAUL ST	Yes	226	356	Yes	2004	7484	ASARCO Globe Site, Denver, CO					
3601 STEELE ST	Yes	88	162	Yes	2004	8005	ASARCO Globe Site, Denver, CO					
3601 YORK ST	Yes	340	257	Yes	2003	NA						
3603 VINE ST	Yes	166	250	Yes	2004	4171	ASARCO Globe Site, Denver, CO					
3604 BRUCE RANDOLPH AVE	Yes	137	211	Yes	2005	8174	ASARCO Globe Site, Denver, CO					
3605 HIGH ST	Yes	219	492	Yes	2005	NA						
3609 BRUCE RANDOLPH AVE	Yes	106	213	Yes	2004	7835	ASARCO Globe Site, Denver, CO					
3609 HIGH ST	Yes	27	559	Yes	2003	NA						
3609 LAFAYETTE ST	Yes	19	403	Yes	2004	2027	ASARCO Globe Site, Denver, CO					
3610 HIGH ST	Yes	172	420	Yes	2005	NA						
3610 SAINT PAUL ST	Yes	83	474	Yes	2004	5501	ASARCO Globe Site, Denver, CO					
3611 FILLMORE ST	Yes	118	157	Yes	2004	5187	ASARCO Globe Site, Denver, CO					
3611 MILWAUKEE ST	No							6/25/2014	2014074121			

TABLE 2 PROPERTY STATUS
VB/I-70 OU1 Superfund Site
Denver, Colorado

Address	Soil Sampled	Highest Arsenic Sample Results (ppm)	Average Lead Concentration (ppm)	Soil Removal Required	Soil Removal Complete	Soil Removal (sq ft)	Waste Soil Disposal Location	NEC Filed Recorded Date	NEC Filed Reception Number	NEC Withdrawal Recorded Date	NEC Withdrawal Reception Number	Notes
3611 YORK ST	Yes	25	475	Yes	2004	3145	ASARCO Globe Site, Denver, CO					
3612 HIGH ST	Yes	91	360	Yes	2004	1037	ASARCO Globe Site, Denver, CO					
3612 MILWAUKEE ST	Yes	7	404	Yes	2013	4898	DADS, Aurora, CO					
3613 CLAYTON ST	Yes	4	81	No								
3613 LAFAYETTE ST	Yes	148	532	Yes	2004	837	ASARCO Globe Site, Denver, CO					
3615 GARFIELD ST	Yes	224	218	Yes	2004	2756	ASARCO Globe Site, Denver, CO					
3615 HIGH ST	Yes	80	321	Yes	2004	1278	ASARCO Globe Site, Denver, CO					
3616 WILLIAMS ST	Yes	15	610	Yes	2003	NA						
3619 LAFAYETTE ST	Yes	60	417	Yes	2005	NA						
3619 VINE ST	Yes	81	461	Yes	2004	3542	ASARCO Globe Site, Denver, CO					
3620 CLAYTON ST	No							6/25/2014	2014074122			
3620 HARRISON ST	Yes	99	122	Yes	2004	NA						
3620 SAINT PAUL ST	Yes	259	468	Yes	2003	NA						
3621 JOSEPHINE ST	Yes	215	202	Yes	2006	4362	ASARCO Globe Site, Denver, CO					
3621 MONROE ST	Yes	9	118	No								
3621 STEELE ST	Yes	102	242	Yes	2004	6962	ASARCO Globe Site, Denver, CO					
3622 LAFAYETTE ST	Yes	391	372	Yes	2003	NA						
3624 GILPIN ST	Yes	75	248	Yes	No			6/25/2014	2014074075			
3624-3626 JOSEPHINE ST	No							6/25/2014	2014074123			
3625 FRANKLIN ST	Yes	130	233	Yes	2006	992	ASARCO Globe Site, Denver, CO					
3625 SAINT PAUL ST	Yes	103	285	Yes	2004	6512	ASARCO Globe Site, Denver, CO					
3626 HUMBOLDT ST	Yes	50	538	Yes	2005	NA						
3626 MADISON ST	No							6/25/2014	2014074124			
3627 JACKSON ST	Yes	74	179	Yes	2004	NA						
3627 YORK ST	Yes	134	250	Yes	2005	NA						
3629 FRANKLIN ST	Yes	87	523	Yes	2004	788	ASARCO Globe Site, Denver, CO					
3629 JOSEPHINE ST	Yes	146	153	Yes	2004	5178	ASARCO Globe Site, Denver, CO					
3630 RACE ST	Yes	42	421	Yes	2013	3623	DADS, Aurora, CO					
3631 BRUCE RANDOLPH AVE	Yes	317	205	Yes	2004	NA						
3632 CLAYTON ST	Yes	81	307	Yes	2005	4733	ASARCO Globe Site, Denver, CO					
3632 WILLIAMS ST	Yes	150	487	Yes	2005	NA						
3634 BRUCE RANDOLPH AVE	Yes	91	153	Yes	2005	5922	ASARCO Globe Site, Denver, CO					
3634 WILLIAMS ST	Yes	104	443	Yes	2005	NA						
3635 HARRISON ST	Yes	113	147	Yes	2004	NA						

TABLE 2 PROPERTY STATUS
VB/I-70 OU1 Superfund Site
Denver, Colorado

Address	Soil Sampled	Highest Arsenic Sample Results (ppm)	Average Lead Concentration (ppm)	Soil Removal Required	Soil Removal Complete	Soil Removal (sq ft)	Waste Soil Disposal Location	NEC Filed Recorded Date	NEC Filed Reception Number	NEC Withdrawal Recorded Date	NEC Withdrawal Reception Number	Notes
3635 MADISON ST	Yes	73	80	Yes	2006	4779	ASARCO Globe Site, Denver, CO					
3636 HARRISON ST	Yes	77	248	Yes	2004	NA						
3636 STEELE ST	Yes	185	130	Yes	2004	4484	ASARCO Globe Site, Denver, CO					
3637 HUMBOLDT ST	Yes	28	478	Yes	2004	729	ASARCO Globe Site, Denver, CO					
3637 MONROE ST	Yes	314	231	Yes	2006	3375	ASARCO Globe Site, Denver, CO					
3638 GARFIELD ST	Yes	143	159	Yes	2005	6233	ASARCO Globe Site, Denver, CO					
3639 FILLMORE ST	Yes	106	229	Yes	2004	2705	ASARCO Globe Site, Denver, CO					
3639 LAFAYETTE ST	Yes	26	438	Yes	2004	3103	ASARCO Globe Site, Denver, CO					
3640 HUMBOLDT ST	Yes	212	641	Yes	2003	NA						
3640 RACE ST	Yes	72	145	Yes	2005	NA						
3641 GARFIELD ST	Yes	117	211	Yes	2004	NA						
3642 HUMBOLDT ST	Yes	26	402	Yes	2005	NA						
3644 WILLIAMS ST	Yes	5	256	No								
3646 DELGANY ST	Yes	21	725	Yes	2003	NA						
3647 YORK ST	Yes	115	260	Yes	2005	NA						
3650 COOK ST	Yes	180	129	Yes	2005	6112	ASARCO Globe Site, Denver, CO					
3650 RACE ST	Yes	143	152	Yes	2004	3012	ASARCO Globe Site, Denver, CO					
3653 GARFIELD ST	Yes	113	123	Yes	2004	NA						
3655 HARRISON ST	Yes	327	164	Yes	2003	NA						
3657 YORK ST	Yes	79	190	Yes	2005	NA						
3658 WILLIAMS ST	Yes	51	405	Yes	2005	NA						
3659 MARION ST	Yes	26	614	Yes	2003	NA						
3660 RACE ST	Yes	170	243	Yes	2004	3111	ASARCO Globe Site, Denver, CO					
3670 MARTIN LUTHER KING BLVD	Yes	54	143	No				6/25/2014	2014074126	11/20/2014	2014141643	
3690 RACE ST	Yes	125	252	Yes	2004	4424	ASARCO Globe Site, Denver, CO					
3700 ADAMS ST	Yes	153	136	Yes	2004	4857	ASARCO Globe Site, Denver, CO					
3700 GAYLORD ST	No							6/25/2014	2014074127			
3700 MILWAUKEE ST	Yes	34	150	No								Resampled in Summer 2014.
3700 RACE ST	Yes	79	357	Yes	2005	160	ASARCO Globe Site, Denver, CO					
3701 COOK ST	Yes	241	165	Yes	2003	NA						
3701 FRANKLIN ST	Yes	4	281	No								
3701 MILWAUKEE ST	Yes	81	163	Yes	2005	6522	ASARCO Globe Site, Denver, CO					
3701 YORK ST	No							6/25/2014	2014074128			
3705 GARFIELD ST	Yes	71	133	Yes	2013	3949	DADS, Aurora, CO					
3705 MADISON ST	Yes	263	145	Yes	2003	NA						

TABLE 2 PROPERTY STATUS
VB/I-70 OU1 Superfund Site
Denver, Colorado

Address	Soil Sampled	Highest Arsenic Sample Results (ppm)	Average Lead Concentration (ppm)	Soil Removal Required	Soil Removal Complete	Soil Removal (sq ft)	Waste Soil Disposal Location	NEC Filed Recorded Date	NEC Filed Reception Number	NEC Withdrawal Recorded Date	NEC Withdrawal Reception Number	Notes
3706 COOK ST	Yes	93	127	Yes	2004	NA						
3706 FILLMORE ST	Yes	6	156	No								
3710 ADAMS ST	Yes	235	153	Yes	2004	4318	ASARCO Globe Site, Denver, CO					
3710 COOK ST	Yes	192	114	Yes	2004	NA						
3710 MADISON ST	Yes	249	135	Yes	2003	NA						
3712 LAFAYETTE ST	Yes	184	376	Yes	2004	1206	ASARCO Globe Site, Denver, CO					
3713 GAYLORD ST	Yes	14	126	No								
3714 MARION ST	Yes	14	403	Yes	2005	NA						
3715 RACE ST	Yes	17	408	Yes	2004	NA						
3716 HIGH ST	Yes	18	427	Yes	2005	NA						
3717 MARION ST	Yes	8	460	Yes	2006	2189	ASARCO Globe Site, Denver, CO					
3718 COOK ST	Yes	140	133	Yes	2005	5959	ASARCO Globe Site, Denver, CO					
3718 HUMBOLDT ST	Yes	6	436	Yes	2004	NA						
3718 RACE ST	Yes	240	457	Yes	2005	NA						
3720 DELGANY ST	Yes	20	609	Yes	2003	NA						
3720 MADISON ST	Yes	82	224	Yes	2004	NA						
3720 VINE ST	Yes	243	289	Yes	2003	NA						
3721 LAFAYETTE ST	Yes	150	303	Yes	2005	NA						
3721 MARION ST	Yes	22	598	Yes	2004	1447	ASARCO Globe Site, Denver, CO					
3722 LAFAYETTE ST	Yes	21	450	Yes	2004	NA						
3722 RACE ST	Yes	172	1004	Yes	2003	NA						
3722 WALNUT ST	Yes	8	523	Yes	2006	2030	ASARCO Globe Site, Denver, CO					
3724 YORK ST	Yes	260	418	Yes	2003	NA						
3725 FRANKLIN ST	Yes	12	437	Yes	2006	2928	ASARCO Globe Site, Denver, CO					
3745 STEELE ST	Yes	98	109	Yes	2004	2880	ASARCO Globe Site, Denver, CO					
3726 MARION ST	Yes	25	450	Yes	2004	NA						
3727 HIGH ST	Yes	99	256	Yes	2005	NA						
3727 LAFAYETTE ST	Yes	35	474	Yes	2003	NA						
3727 LAFAYETTE ST	Yes	35	474	Yes	2003	NA						
3728 VINE ST	Yes	110	193	Yes	2004	6205	ASARCO Globe Site, Denver, CO					
3729 MARION ST	Yes	22	415	Yes	2004	NA						
3730 DOWNING ST	Yes	11	1033	Yes	2006	1566	ASARCO Globe Site, Denver, CO					
3730 YORK ST	Yes	99	637	Yes	2003	NA						
3730 YORK ST	Yes	99	637	Yes	2003	NA						
3732 MARION ST	Yes	9	423	Yes	2005	946	ASARCO Globe Site, Denver, CO					
3733 FRANKLIN ST	Yes	12	409	Yes	2004	1169	ASARCO Globe Site, Denver, CO					

TABLE 2 PROPERTY STATUS
VB/I-70 OU1 Superfund Site
Denver, Colorado

Address	Soil Sampled	Highest Arsenic Sample Results (ppm)	Average Lead Concentration (ppm)	Soil Removal Required	Soil Removal Complete	Soil Removal (sq ft)	Waste Soil Disposal Location	NEC Filed Recorded Date	NEC Filed Reception Number	NEC Withdrawal Recorded Date	NEC Withdrawal Reception Number	Notes
3733 WYNKOOP ST	Yes	133	540	Yes	2004	1509	ASARCO Globe Site, Denver, CO					
3734 FRANKLIN ST	Yes	6	412	Yes	2005	NA						
3734 MARION ST	Yes	27	465	Yes	2004	NA						
3735 FRANKLIN ST	Yes	16	409	Yes	2004	NA						
3735 MARION ST	Yes	7	413	Yes	2005	NA						
3737 FILLMORE ST	No							6/25/2014	2014074129			
3737 RACE ST	Yes	80	277	Yes	2006	3053	ASARCO Globe Site, Denver, CO					
3738 FILLMORE ST	Yes	4	57	No								
3738 LAFAYETTE ST	Yes	6	1030	Yes	2006	1788	ASARCO Globe Site, Denver, CO					
3739 MARION ST	Yes	16	550	Yes	2005	3837	ASARCO Globe Site, Denver, CO					
3739 WYNKOOP ST	Yes	123	498	Yes	2004	2710	ASARCO Globe Site, Denver, CO					
3741 FILLMORE ST	Yes	6	357	No								
3741 WYNKOOP ST	Yes	25	501	Yes	2004	2149	ASARCO Globe Site, Denver, CO					
3742 BRIGHTON BLVD	Yes	25	475	Yes	2004	3637	ASARCO Globe Site, Denver, CO					
3742 DELGANY ST	Yes	335	517	Yes	2005	212	ASARCO Globe Site, Denver, CO					
3742 HIGH ST	Yes	15	446	Yes	2005	NA						
3742 MARION ST	Yes	24	419	Yes	2004	NA						
3743 FRANKLIN ST	Yes	6	845	Yes	2003	NA						
3743 FRANKLIN ST	Yes	6	845	Yes	2003	NA						
3744 LAFAYETTE ST	Yes	103	336	Yes	2004	NA						
3744 MARION ST	Yes	19	575	Yes	2005	745	ASARCO Globe Site, Denver, CO					
3745 STEELE ST	Yes	98	109	Yes	2004	NA						
3746 DELGANY ST	Yes	45	488	Yes	2004	1438	ASARCO Globe Site, Denver, CO					
3748 LAFAYETTE ST	Yes	171	385	Yes	2004	NA						
3750 COOK ST	Yes	34	49	No								
3750 DELGANY ST	Yes	19	403	Yes	2005	NA						
3750 MADISON ST	Yes	130	130	Yes	2005	5890	ASARCO Globe Site, Denver, CO					
3750 YORK ST	Yes	330	513	Yes	2003	NA						
3751 VINE ST	Yes	86	178	Yes	2005	NA						
3753 FRANKLIN ST	No							6/25/2014	2014074130			
3754 DELGANY ST	Yes	38	554	Yes	2003	NA						
3754 MARION ST	Yes	26	611	Yes	2003	NA						
3758 SAINT PAUL ST	Yes	133	153	Yes	2004	4941	ASARCO Globe Site, Denver, CO					
3760 FRANKLIN ST	Yes	40	954	Yes	2003	NA						
3762 MARION ST	Yes	18	414	Yes	2005	NA						
3765 GILPIN ST	Yes	112	573	Yes	2003	NA						
3770 FRANKLIN ST	Yes	19	429	Yes	2005	NA						

TABLE 2 PROPERTY STATUS
VB/I-70 OU1 Superfund Site
Denver, Colorado

Address	Soil Sampled	Highest Arsenic Sample Results (ppm)	Average Lead Concentration (ppm)	Soil Removal Required	Soil Removal Complete	Soil Removal (sq ft)	Waste Soil Disposal Location	NEC Filed Recorded Date	NEC Filed Reception Number	NEC Withdrawal Recorded Date	NEC Withdrawal Reception Number	Notes
3770 GILPIN ST	Yes	22	452	Yes	2004	1929	ASARCO Globe Site, Denver, CO					
3778 FRANKLIN ST	Yes	6	492	Yes	2005	NA						
3778 GILPIN ST	Yes	17	465	Yes	2005	NA						
3781 GILPIN ST	Yes	134	578	Yes	2003	NA						
3784 GILPIN ST	Yes	27	728	Yes	2003	NA						
3785 WILLIAMS ST	Yes	18	539	Yes	2013	1519	DADS, Aurora, CO					
3786 GILPIN ST	Yes	48	1129	Yes	2003	NA						
3802 HUMBOLDT ST	Yes	9	1610	Yes	2006	3696	ASARCO Globe Site, Denver, CO					
3805 GILPIN ST	Yes	88	390	Yes	2004	NA						
3808 STEELE ST	Yes	61	430	Yes	2004	4265	ASARCO Globe Site, Denver, CO					
3810 WILLIAMS ST	Yes	9	477	Yes	2004	2797	ASARCO Globe Site, Denver, CO					
3811 MADISON ST	No							6/25/2014	2014074131			
3814 ADAMS ST	Yes	97	343	Yes	2006	6365	ASARCO Globe Site, Denver, CO					
3822 ADAMS ST	Yes	97	343	Yes	2006	NA						
3830 ADAMS ST	Yes	6	81	No								
3830 FRANKLIN ST	Yes	179	698	Yes	2003	NA						
3830 WILLIAMS ST	Yes	15	447	Yes	2004	NA						
3831 WILLIAMS ST	Yes	8	417	Yes	2005	553	ASARCO Globe Site, Denver, CO					
3834 FRANKLIN ST	Yes	25	605	Yes	2003	NA						
3835 ADAMS ST	Yes	165	132	Yes	2004	7437	ASARCO Globe Site, Denver, CO					
3838 GILPIN ST	Yes	36	626	Yes	2003	NA						
3838 MADISON ST	Yes	89	261	Yes	2005	4421	ASARCO Globe Site, Denver, CO					
3838 STEELE ST	Yes	127	209	Yes	2005	5409	ASARCO Globe Site, Denver, CO					
3839 GILPIN ST	Yes	22	444	Yes	2004	NA						
3840 E 35TH AVE	Yes	90	99	Yes	2005	4700	ASARCO Globe Site, Denver, CO					
3840 FRANKLIN ST	Yes	24	402	Yes	2005	NA						
3842 GILPIN ST	Yes	39	625	Yes	2003	NA						
3843 GILPIN ST	Yes	22	405	Yes	2004	NA						
3843 WILLIAMS ST	Yes	137	469	Yes	2004	NA						
3846 GILPIN ST	Yes	43	508	Yes	2004	NA						
3847 WILLIAMS ST	Yes	12	463	Yes	2005	NA						
3855 COOK ST	Yes	83	151	Yes	2004	4657	ASARCO Globe Site, Denver, CO					
3880 MADISON ST	Yes	80	133	Yes	2004	NA						
3900 STEELE ST APPRX	Yes	32	248	No								
3906 JACKSON ST	Yes	291	226	Yes	2003	NA						
3911 HUMBOLDT ST	Yes	40	726	Yes	2003	NA						
3915 HUMBOLDT ST	Yes	10	325	No								
3919 HUMBOLDT ST	Yes	20	531	Yes	2004	NA						

TABLE 2 PROPERTY STATUS
VB/I-70 OU1 Superfund Site
Denver, Colorado

Address	Soil Sampled	Highest Arsenic Sample Results (ppm)	Average Lead Concentration (ppm)	Soil Removal Required	Soil Removal Complete	Soil Removal (sq ft)	Waste Soil Disposal Location	NEC Filed Recorded Date	NEC Filed Reception Number	NEC Withdrawal Recorded Date	NEC Withdrawal Reception Number	Notes
3927 ADAMS ST	Yes	291	183	Yes	2003	NA						
3928 STEELE ST	Yes	80	170	Yes	No			6/25/2014	2014074076			
3928 WILLIAMS ST	Yes	180	333	Yes	2006	935	ASARCO Globe Site, Denver, CO					
3940 JACKSON ST	Yes	73	208	Yes	2004	NA						
3942 WILLIAMS ST	Yes	35	587	Yes	2003	NA						
3948 ADAMS ST	Yes	14	115	No								
3971 HARRISON ST	Yes	165	154	Yes	2004	NA						
3986 ADAMS ST	No							6/25/2014	2014074132			
3990 JACKSON ST	Yes	95	136	Yes	2005	5724	ASARCO Globe Site, Denver, CO					
4000 MILWAUKEE ST	Yes	26	106	No								
4021 MILWAUKEE ST	Yes	236	420	Yes	2005	3392	ASARCO Globe Site, Denver, CO					
4027 FILLMORE ST	Yes	60	502	Yes	2004	NA						
4033 ADAMS ST	Yes	149	133	Yes	2005	3150	ASARCO Globe Site, Denver, CO					
4040 CLAYTON ST	Yes	198	270	Yes	2004	4555	ASARCO Globe Site, Denver, CO					
4041 STEELE ST	Yes	115	272	Yes	2004	6664	ASARCO Globe Site, Denver, CO					
4050 FILLMORE ST	Yes	187	227	Yes	2004	2114	ASARCO Globe Site, Denver, CO					
4109 MILWAUKEE ST	Yes	147	162	Yes	2004	2404	ASARCO Globe Site, Denver, CO					
4110 FILLMORE ST	Yes	99	183	Yes	2004	2832	ASARCO Globe Site, Denver, CO					
4110 SAINT PAUL ST	Yes	116	229	Yes	2013	5057	DADS, Aurora, CO					
4111 MADISON ST	Yes	4	55	No								
4111 SAINT PAUL ST	Yes	129	216	Yes	2004	4254	ASARCO Globe Site, Denver, CO					
4114 STEELE ST	No							6/25/2014	2014074133			
4115 GARFIELD ST	No							6/25/2014	2014074134			
4115 STEELE ST	Yes	166	377	Yes	2004	2844	ASARCO Globe Site, Denver, CO					
4120 FILLMORE ST	Yes	46	247	Yes	2005	4178	ASARCO Globe Site, Denver, CO					
4135 JACKSON ST	Yes	4	184	No								
4141 MILWAUKEE ST	Yes	85	144	Yes	2005	4725	ASARCO Globe Site, Denver, CO					
4143 FOX ST	Yes	27	782	Yes	2003	NA						
4145 STEELE ST	Yes	96	313	Yes	2005	3473	ASARCO Globe Site, Denver, CO					
4150 ADAMS ST	Yes	235	204	Yes	2004	NA						
4171 ADAMS ST	Yes	122	188	Yes	2005	5618	ASARCO Globe Site, Denver, CO					
4185 SAINT PAUL ST	Yes	7	62	No								
4205 FOX ST	Yes	12	635	Yes	2003	NA						
4211 FOX ST	Yes	13	527	Yes	2005	9023	ASARCO Globe Site, Denver, CO					

TABLE 2 PROPERTY STATUS
VB/I-70 OU1 Superfund Site
Denver, Colorado

Address	Soil Sampled	Highest Arsenic Sample Results (ppm)	Average Lead Concentration (ppm)	Soil Removal Required	Soil Removal Complete	Soil Removal (sq ft)	Waste Soil Disposal Location	NEC Filed Recorded Date	NEC Filed Reception Number	NEC Withdrawal Recorded Date	NEC Withdrawal Reception Number	Notes
4300 STEELE ST	Yes	175	389	Yes	2005	4336	ASARCO Globe Site, Denver, CO					
4304 JOSEPHINE ST	Yes	29	997	Yes	2005	4332	ASARCO Globe Site, Denver, CO					
4305 COLUMBINE ST	Yes	31	538	Yes	2005	2018	ASARCO Globe Site, Denver, CO					
4309 ADAMS ST	Yes	119	382	Yes	2004	4318	ASARCO Globe Site, Denver, CO					
4309 COLUMBINE ST	Yes	33	576	Yes	2003	NA						
4312 YORK ST	Yes	23	434	Yes	2005	NA						
4314 JOSEPHINE ST	Yes	237	579	Yes	2003	NA						
4315 STEELE ST	Yes	315	296	Yes	2003	NA						
4318 SAINT PAUL ST	Yes	287	152	Yes	2003	NA						
4319 FILLMORE ST	Yes	312	269	Yes	2003	NA						
4320 THOMPSON CT	Yes	100	203	Yes	2006	4200	ASARCO Globe Site, Denver, CO					
4325 CLAYTON ST	Yes	102	233	Yes	2005	4200	ASARCO Globe Site, Denver, CO					
4328 CLAYTON ST	Yes	97	223	Yes	2004	3370	ASARCO Globe Site, Denver, CO					
4334 SAINT PAUL ST	Yes	106	208	Yes	2005	2373	ASARCO Globe Site, Denver, CO					
4335 MILWAUKEE ST	Yes	83	227	Yes	2005	5353	ASARCO Globe Site, Denver, CO					
4336 STEELE ST	Yes	78	184	Yes	2004	4080	ASARCO Globe Site, Denver, CO					
4336 THOMPSON CT	Yes	97	350	Yes	2004	4868	ASARCO Globe Site, Denver, CO					
4340 JOSEPHINE ST	Yes	269	776	Yes	2004	2734	ASARCO Globe Site, Denver, CO					
4343 CLAYTON ST	Yes	147	313	Yes	2005	6095	ASARCO Globe Site, Denver, CO					
4343 COLUMBINE ST	Yes	10	487	Yes	2006	9612	ASARCO Globe Site, Denver, CO					
4344 SAINT PAUL ST	Yes	102	145	Yes	2005	3240	ASARCO Globe Site, Denver, CO					
4344 STEELE ST	Yes	148	130	Yes	No			5/23/2014	2014059506			
4345 COLUMBINE ST	Yes	10	487	Yes	2006	NA						
4347 CLAYTON ST	Yes	178	333	Yes	2005	2984	ASARCO Globe Site, Denver, CO					
4350 JOSEPHINE ST	Yes	167	171	Yes	2005	NA						
4350 SAINT PAUL ST	Yes	74	153	Yes	2004	4486	ASARCO Globe Site, Denver, CO					
4351 RACE ST	Yes	206	644	Yes	2003	NA						
4355 SAINT PAUL ST	Yes	94	137	Yes	2004	3104	ASARCO Globe Site, Denver, CO					
4359 CLAUDE CT	Yes	75	423	Yes	2006	7231	ASARCO Globe Site, Denver, CO					
4362 JOSEPHINE ST	Yes	235	251	Yes	2005	NA						

TABLE 2 PROPERTY STATUS
VB/I-70 OU1 Superfund Site
Denver, Colorado

Address	Soil Sampled	Highest Arsenic Sample Results (ppm)	Average Lead Concentration (ppm)	Soil Removal Required	Soil Removal Complete	Soil Removal (sq ft)	Waste Soil Disposal Location	NEC Filed Recorded Date	NEC Filed Reception Number	NEC Withdrawal Recorded Date	NEC Withdrawal Reception Number	Notes
4363 STEELE ST	Yes	91	197	Yes	2004	4455	ASARCO Globe Site, Denver, CO					
4375 CLAYTON ST	Yes	115	330	Yes	2004	5049	ASARCO Globe Site, Denver, CO					
4395 COLUMBINE ST	Yes	14	520	Yes	2006	5586	ASARCO Globe Site, Denver, CO					
4400 CLAYTON ST	Yes	72	150	Yes	2004	3643	ASARCO Globe Site, Denver, CO					
4401 JOSEPHINE ST	Yes	13	339	No								
4401 MILWAUKEE ST	Yes	120	340	Yes	2005	4577	ASARCO Globe Site, Denver, CO					
4411 FILLMORE ST	Yes	20	99	No								
4414 DELAWARE ST	Yes	190	350	Yes	2005	4806	ASARCO Globe Site, Denver, CO					
4415 MILWAUKEE ST	Yes	180	460	Yes	2005	4615	ASARCO Globe Site, Denver, CO					
4418 DELAWARE ST	Yes	190	350	Yes	2005	NA						
4419 STEELE ST	Yes	15	580	Yes	2013	2598	DADS, Aurora, CO					
4422 DELAWARE ST	Yes	259	518	Yes	2003	NA						
4424 FILLMORE ST	Yes	76	166	Yes	2005	2418	ASARCO Globe Site, Denver, CO					
4424 JOSEPHINE ST	Yes	189	388	Yes	2004	1547	ASARCO Globe Site, Denver, CO					
4424 MILWAUKEE ST	Yes	113	276	Yes	2005	2716	ASARCO Globe Site, Denver, CO					
4430 FILLMORE ST	Yes	150	314	Yes	2004	3159	ASARCO Globe Site, Denver, CO					
4430 SAINT PAUL ST	Yes	120	183	Yes	2004	5259	ASARCO Globe Site, Denver, CO					
4431 CHEROKEE ST	Yes	10	413	Yes	2005	2496	ASARCO Globe Site, Denver, CO					
4431 ELIZABETH ST	No							6/25/2014	2014074135			
4431 FILLMORE ST	Yes	110	119	Yes	2005	3295	ASARCO Globe Site, Denver, CO					
4433 MILWAUKEE ST	Yes	171	381	Yes	2004	3300	ASARCO Globe Site, Denver, CO					
4435 THOMPSON CT	Yes	120	305	Yes	2006	4711	ASARCO Globe Site, Denver, CO					
4436 JOSEPHINE ST	Yes	24	421	Yes	2004	954	ASARCO Globe Site, Denver, CO					
4441 SAINT PAUL ST	Yes	76	252	Yes	2005	4128	ASARCO Globe Site, Denver, CO					
4442 JOSEPHINE ST	Yes	65	601	Yes	2003	NA						
4442 MILWAUKEE ST	Yes	168	346	Yes	2005	4547	ASARCO Globe Site, Denver, CO					
4442 SAINT PAUL ST	Yes	157	139	Yes	2004	5000	ASARCO Globe Site, Denver, CO					
4445 MILWAUKEE ST	Yes	99	330	Yes	2004	2570	ASARCO Globe Site, Denver, CO					

TABLE 2 PROPERTY STATUS
VB/I-70 OU1 Superfund Site
Denver, Colorado

Address	Soil Sampled	Highest Arsenic Sample Results (ppm)	Average Lead Concentration (ppm)	Soil Removal Required	Soil Removal Complete	Soil Removal (sq ft)	Waste Soil Disposal Location	NEC Filed Recorded Date	NEC Filed Reception Number	NEC Withdrawal Recorded Date	NEC Withdrawal Reception Number	Notes
4446 FILLMORE ST	Yes	6	440	Yes	2004	2668	ASARCO Globe Site, Denver, CO					
4447 COOK ST VCNT	No							6/25/2014	2014074136			
4451 SAINT PAUL ST	Yes	81	184	Yes	2004	4668	ASARCO Globe Site, Denver, CO					
4459 THOMPSON CT	Yes	274	249	Yes	2003	NA						
4460 ELIZABETH ST	Yes	235	274	Yes	2004	4535	ASARCO Globe Site, Denver, CO					
4463 CHEROKEE ST	Yes	87	311	Yes	2004	NA						
4500 THOMPSON CT	Yes	12	171	No								
4507 CLAYTON ST	Yes	98	454	Yes	2005	4536	ASARCO Globe Site, Denver, CO					
4518 MILWAUKEE ST	Yes	119	269	Yes	2004	3678	ASARCO Globe Site, Denver, CO					
4527 THOMPSON CT	Yes	7	189	No								
4538 CLAYTON ST	Yes	140	137	Yes	2006	3605	ASARCO Globe Site, Denver, CO					
4539 COLUMBINE ST	Yes	188	679	Yes	2003	NA						
4541 CLAYTON ST	Yes	7	237	No								
4543 MILWAUKEE ST	Yes	136	266	Yes	2004	7229	ASARCO Globe Site, Denver, CO					
4601 RACE ST APPRX	Yes	19	570	Yes	2006	3810	ASARCO Globe Site, Denver, CO					
4611 CLAYTON ST	No							6/25/2014	2014074137			
4615 FILLMORE ST	Yes	131	178	Yes	2004	3586	ASARCO Globe Site, Denver, CO					
4616 RACE ST	Yes	12	628	Yes	2003							
4620 CLAUDE CT	Yes	31	527	Yes	2005	1283	ASARCO Globe Site, Denver, CO					
4620 FILLMORE ST	Yes	203	309	Yes	2004	3556	ASARCO Globe Site, Denver, CO					
4620 RACE ST	Yes	17	599	Yes	2003							
4623-4625 THOMPSON CT	Yes	163	315	Yes	2015	9611	DADS, Aurora, CO					
4626 RACE ST	Yes	19	475	Yes	2004	4077	ASARCO Globe Site, Denver, CO					
4635 FILLMORE ST	Yes	301	364	Yes	2003	NA						
4640 FILLMORE ST	Yes	344	267	Yes	2003	NA						
4644 HIGH ST	Yes	17	439	Yes	2004	3030	ASARCO Globe Site, Denver, CO					
4644 WILLIAMS ST	No							7/24/2014	2014088509			
4650 CLAYTON ST	Yes	72	189	Yes	2004	4013	ASARCO Globe Site, Denver, CO					
4650 FILLMORE ST	Yes	380	239	Yes	2003	NA						
4651 CLAYTON ST	Yes	96	146	Yes	2005	4028	ASARCO Globe Site, Denver, CO					
4651 WILLIAMS ST	Yes	24	492	Yes	2006	2561	ASARCO Globe Site, Denver, CO					
4653 COLUMBINE ST	No							6/25/2014	2014074138			

TABLE 2 PROPERTY STATUS
VB/I-70 OU1 Superfund Site
Denver, Colorado

Address	Soil Sampled	Highest Arsenic Sample Results (ppm)	Average Lead Concentration (ppm)	Soil Removal Required	Soil Removal Complete	Soil Removal (sq ft)	Waste Soil Disposal Location	NEC Filed Recorded Date	NEC Filed Reception Number	NEC Withdrawal Recorded Date	NEC Withdrawal Reception Number	Notes
4653 HIGH ST	Yes	326	481	Yes	2005	6109	ASARCO Globe Site, Denver, CO					
4654 HIGH ST	Yes	27	586	Yes	2003	NA						
4657 COLUMBINE ST	No							6/25/2014	2014074139			
4657 RACE ST	Yes	6	235	No								
4658 WILLIAMS ST	Yes	145	559	Yes	2003	NA						
4660 BALDWIN CT	Yes	30	501	Yes	2004	10097	ASARCO Globe Site, Denver, CO					
4660 MILWAUKEE ST	Yes	305	312	Yes	2003	NA						
4660 RACE ST	Yes	19	436	Yes	2005	5222	ASARCO Globe Site, Denver, CO					
4662 WILLIAMS ST	Yes	10	264	No								
4665 FILLMORE ST	Yes	120	137	Yes	2004	4000	ASARCO Globe Site, Denver, CO					
4665 VINE ST	Yes	51	427	Yes	2004	3897	ASARCO Globe Site, Denver, CO					
4666 RACE ST	Yes	6	157	No								
4668 HIGH ST	Yes	21	466	Yes	2004	3140	ASARCO Globe Site, Denver, CO					
4669 RACE ST	Yes	84	248	Yes	2005	3191	ASARCO Globe Site, Denver, CO					
4670 MILWAUKEE ST	Yes	79	136	Yes	2004	2678	ASARCO Globe Site, Denver, CO					
4675 HIGH ST	No							7/16/2015	2015098106			
4677 GAYLORD ST	Yes	20	473	Yes	2004	3748	ASARCO Globe Site, Denver, CO					
4677 HIGH ST	No							7/16/2015	2015098103			
4679 HIGH ST	No							7/16/2015	2015098104			
4679 VINE ST	Yes	11	477	Yes	2004	4174	ASARCO Globe Site, Denver, CO					
4680 CLAYTON ST	Yes	102	558	Yes	2003	NA						
4680 MILWAUKEE ST	Yes	160	314	Yes	2004	3216	ASARCO Globe Site, Denver, CO					
4681 BALDWIN CT	Yes	16	897	Yes	2006	4025	ASARCO Globe Site, Denver, CO					
4682 JOSEPHINE ST	Yes	12	444	Yes	2004	1054	ASARCO Globe Site, Denver, CO					
4683 BALDWIN CT	Yes	16	897	Yes	2006	NA						
4685 FILLMORE ST	Yes	99	234	Yes	2006	4622	ASARCO Globe Site, Denver, CO					
4685 HIGH ST	No							7/16/2015	2015098105			
4687 GAYLORD ST	Yes	31	473	Yes	2004	2203	ASARCO Globe Site, Denver, CO					
4690 HIGH ST	Yes	100	422	Yes	2006	1902	ASARCO Globe Site, Denver, CO					
4695 HIGH ST	Yes	17	430	Yes	2004	4947	ASARCO Globe Site, Denver, CO					
4695 MILWAUKEE ST	Yes	120	192	Yes	2004	2526	ASARCO Globe Site, Denver, CO					

TABLE 2 PROPERTY STATUS
VB/I-70 OU1 Superfund Site
Denver, Colorado

Address	Soil Sampled	Highest Arsenic Sample Results (ppm)	Average Lead Concentration (ppm)	Soil Removal Required	Soil Removal Complete	Soil Removal (sq ft)	Waste Soil Disposal Location	NEC Filed Recorded Date	NEC Filed Reception Number	NEC Withdrawal Recorded Date	NEC Withdrawal Reception Number	Notes
4695 WILLIAMS ST	Yes	22	422	Yes	2006	6190	ASARCO Globe Site, Denver, CO					
4700 CLAYTON ST	Yes	120	372	Yes	2004	9730	ASARCO Globe Site, Denver, CO					
4700 ELIZABETH ST	Yes	4	61	No				6/25/2014	2014074140	11/20/2014	2014141639	
4700 VINE ST	Yes	56	435	Yes	2004	3482	ASARCO Globe Site, Denver, CO					
4701 FILLMORE ST	Yes	450	333	Yes	2003	NA						
4701 MILWAUKEE ST	Yes	131	157	Yes	2004	3629	ASARCO Globe Site, Denver, CO					
4704 GAYLORD ST	Yes	19	408	Yes	2004	3468	ASARCO Globe Site, Denver, CO					
4705 CLAYTON ST	Yes	368	322	Yes	2003	NA						
4706 CLAUDE CT	Yes	6	421	Yes	2004	992	ASARCO Globe Site, Denver, CO					
4708 WILLIAMS ST	Yes	28	448	Yes	2006	7040	ASARCO Globe Site, Denver, CO					
4710 ELIZABETH ST	Yes	81	505	Yes	2004	4356	ASARCO Globe Site, Denver, CO					
4710 RACE ST	Yes	13	583	Yes	2003	NA						
4710 THOMPSON CT	Yes	135	164	Yes	2004	4031	ASARCO Globe Site, Denver, CO					
4712 BRIGHTON BLVD	Yes	6	580	Yes	2003	NA						
4715 WILLIAMS ST	Yes	110	279	Yes	2006	2629	ASARCO Globe Site, Denver, CO					
4718 RACE ST	Yes	880	523	Yes	2004	1275	ASARCO Globe Site, Denver, CO					
4719-4721 VINE ST	Yes	18	410	Yes	2004	2937	ASARCO Globe Site, Denver, CO					
4720 GAYLORD ST	Yes	129	381	Yes	2005	4356	ASARCO Globe Site, Denver, CO					
4720 SAINT PAUL CT	Yes	4	66	No								
4720 WILLIAMS ST	Yes	174	256	Yes	2004	4189	ASARCO Globe Site, Denver, CO					
4721 THOMPSON CT	Yes	124	468	Yes	2005	4401	ASARCO Globe Site, Denver, CO					
4722 RACE ST	Yes	21	428	Yes	2008	2959	ASARCO Globe Site, Denver, CO	6/25/2014	2041074077	9/16/2014	2014112636	After NEC filed, it was determined that this property had already been remediated in 2008. Therefore, the notice was withdrawn.
4723 JOSEPHINE ST	Yes	5	58	No								
4723 VINE ST	Yes	6	412	Yes	2004	505	ASARCO Globe Site, Denver, CO					
4725 CLAYTON ST	Yes	93	214	Yes	2005	4655	ASARCO Globe Site, Denver, CO					
4725 SAINT PAUL CT	Yes	139	227	Yes	2005	4298	ASARCO Globe Site, Denver, CO					
4726 HIGH ST	Yes	68	474	Yes	2005	1217	ASARCO Globe Site, Denver, CO					

TABLE 2 PROPERTY STATUS
VB/I-70 OU1 Superfund Site
Denver, Colorado

Address	Soil Sampled	Highest Arsenic Sample Results (ppm)	Average Lead Concentration (ppm)	Soil Removal Required	Soil Removal Complete	Soil Removal (sq ft)	Waste Soil Disposal Location	NEC Filed Recorded Date	NEC Filed Reception Number	NEC Withdrawal Recorded Date	NEC Withdrawal Reception Number	Notes
4727 BRIGHTON BLVD	Yes	17	445	Yes	2004	4119	ASARCO Globe Site, Denver, CO					
4729 GAYLORD ST	Yes	218	427	Yes	2004	4238	ASARCO Globe Site, Denver, CO					
4730 ELIZABETH ST	Yes	90	196	Yes	2005	2664	ASARCO Globe Site, Denver, CO					
4730 RACE ST	Yes	45	415	Yes	2004	3133	ASARCO Globe Site, Denver, CO					
4730 THOMPSON CT	Yes	80	205	Yes	2005	3792	ASARCO Globe Site, Denver, CO					
4732 GAYLORD ST	Yes	74	387	Yes	2006	2084	ASARCO Globe Site, Denver, CO					
4732 VINE ST	Yes	16	461	Yes	2004	2175	ASARCO Globe Site, Denver, CO					
4735 MILWAUKEE ST	No							6/25/2014	2014074141			
4736 RACE ST	Yes	221	378	Yes	2004	3213	ASARCO Globe Site, Denver, CO					
4736 VINE ST	Yes	16	563	Yes	2004	1906	ASARCO Globe Site, Denver, CO					
4740 CLAYTON ST	Yes	113	159	Yes	2004	3827	ASARCO Globe Site, Denver, CO					
4740 THOMPSON CT	Yes	232	124	Yes	2005	2114	ASARCO Globe Site, Denver, CO					
4741 THOMPSON CT	Yes	170	116	Yes	2004	1495	ASARCO Globe Site, Denver, CO					
4744 GAYLORD ST	Yes	278	297	Yes	2003	NA						
4750 WILLIAMS ST	Yes	99	348	Yes	2004	6112	ASARCO Globe Site, Denver, CO					
4751 ELIZABETH ST	Yes	121	148	Yes	2005	3947	ASARCO Globe Site, Denver, CO					
4751 WILLIAMS ST	Yes	15	450	Yes	2006	1900	ASARCO Globe Site, Denver, CO					
4752 HIGH ST	Yes	16	409	Yes	2005	5134	ASARCO Globe Site, Denver, CO					
4753 WILLIAMS ST	Yes	24	532	Yes	2004	3882	ASARCO Globe Site, Denver, CO					
4755 MILWAUKEE ST	Yes	103	145	Yes	2005	6124	ASARCO Globe Site, Denver, CO					
4755 VINE ST	Yes	121	366	Yes	2004	4364	ASARCO Globe Site, Denver, CO					
4757 CLAYTON ST	Yes	85	149	Yes	2005	4681	ASARCO Globe Site, Denver, CO					
4758 VINE ST	Yes	20	410	Yes	2006	1349	ASARCO Globe Site, Denver, CO					
4760 CLAYTON ST	Yes	174	360	Yes	2004	5149	ASARCO Globe Site, Denver, CO					
4761 THOMPSON CT	Yes	90	457	Yes	2004	3316	ASARCO Globe Site, Denver, CO					
4762 HIGH ST	Yes	20	414	Yes	2004	2670	ASARCO Globe Site, Denver, CO					

TABLE 2 PROPERTY STATUS
VB/I-70 OU1 Superfund Site
Denver, Colorado

Address	Soil Sampled	Highest Arsenic Sample Results (ppm)	Average Lead Concentration (ppm)	Soil Removal Required	Soil Removal Complete	Soil Removal (sq ft)	Waste Soil Disposal Location	NEC Filed Recorded Date	NEC Filed Reception Number	NEC Withdrawal Recorded Date	NEC Withdrawal Reception Number	Notes
4763 RACE ST	Yes	16	538	Yes	2005	5126	ASARCO Globe Site, Denver, CO					
4765 CLAUDE CT	Yes	117	235	Yes	2004	3039	ASARCO Globe Site, Denver, CO					
4765 GAYLORD ST	Yes	18	410	Yes	2004	1789	ASARCO Globe Site, Denver, CO					
4765 WILLIAMS ST	Yes	17	445	Yes	2006	4369	ASARCO Globe Site, Denver, CO					
4766 WILLIAMS ST	Yes	31	438	Yes	2004	2715	ASARCO Globe Site, Denver, CO					
4767 HIGH ST	Yes	28	415	Yes	2005	4234	ASARCO Globe Site, Denver, CO					
4770 COLUMBINE ST	Yes	149	309	Yes	2004	3229	ASARCO Globe Site, Denver, CO					
4770 SAINT PAUL ST	Yes	236	174	Yes	2004	3335	ASARCO Globe Site, Denver, CO					
4771 VINE ST	Yes				2005	NA						
4775 FILLMORE ST	Yes	138	424	Yes	2004	6290	ASARCO Globe Site, Denver, CO					
4775 HIGH ST	Yes	254	411	Yes	2003	NA						
4775 RACE ST	Yes	26	551	Yes	2003	NA						
4775 SAINT PAUL CT	Yes	12	86	No								
4775 SAINT PAUL CT	Yes	8	70	No								
4775 WILLIAMS ST	Yes	24	409	Yes	2006	1096	ASARCO Globe Site, Denver, CO					
4776 FILLMORE ST	Yes	115	173	Yes	2004	3544	ASARCO Globe Site, Denver, CO					
4777 RACE ST	Yes	16	405	Yes	2005	1727	ASARCO Globe Site, Denver, CO					
4778 CLAYTON ST	Yes	90	281	Yes	2004	5099	ASARCO Globe Site, Denver, CO					
4780 CLAYTON ST	Yes	70	298	Yes	2004	4756	ASARCO Globe Site, Denver, CO					
4780 COLUMBINE ST	Yes	156	573	Yes	2003	NA						
4780 RACE ST	Yes	19	459	Yes	2004	2800	ASARCO Globe Site, Denver, CO					
4780 SAINT PAUL CT	No							6/25/2014	2014074142			
4781 RACE ST	Yes	12	618	Yes	2003	NA						
4781 WILLIAMS ST	Yes	25	501	Yes	2006	975	ASARCO Globe Site, Denver, CO					
4782 CLAUDE CT	Yes	31	545	Yes	2003	NA						
4783 HIGH ST	Yes	132	409	Yes	2004	5635	ASARCO Globe Site, Denver, CO					
4784 CLAUDE CT	Yes	13	1360	Yes	2004	NA						
4785 CLAUDE CT	Yes	248	416	Yes	2003	NA						
4785 COLUMBINE ST	Yes	140	178	Yes	2004	3300	ASARCO Globe Site, Denver, CO					
4785 FILLMORE ST	Yes	208	174	Yes	2005	NA						
4791 HIGH ST	Yes	8	146	No								

TABLE 2 PROPERTY STATUS
VB/I-70 OU1 Superfund Site
Denver, Colorado

Address	Soil Sampled	Highest Arsenic Sample Results (ppm)	Average Lead Concentration (ppm)	Soil Removal Required	Soil Removal Complete	Soil Removal (sq ft)	Waste Soil Disposal Location	NEC Filed Recorded Date	NEC Filed Reception Number	NEC Withdrawal Recorded Date	NEC Withdrawal Reception Number	Notes
4793 CLAUDE CT	Yes	30	461	Yes	2006	6921	ASARCO Globe Site, Denver, CO					
4801 MILWAUKEE ST	Yes	84	137	Yes	2005	3386	ASARCO Globe Site, Denver, CO					
4809 MILWAUKEE ST	Yes	382	210	Yes	2003	NA						
4811 CLAYTON ST	Yes	314	216	Yes	2003	NA						
4815 FILLMORE ST	Yes	140	112	Yes	2005	674	ASARCO Globe Site, Denver, CO					
4815 SAINT PAUL ST	Yes	58	107	No								
4815 SAINT PAUL ST	Yes	237	342	Yes								Re-landscaped property, and then resampled between 2012 - 2014.
4823 STEELE ST	No							6/25/2014	2014074143			
4825 SAINT PAUL ST	Yes	83	160	Yes	2004	NA						
4830 CLAYTON ST	Yes	338	342	Yes	2003	NA						
4831 ADAMS ST	Yes	79	231	Yes	2005	2202	ASARCO Globe Site, Denver, CO					
4840 CLAYTON ST	Yes	102	359	Yes	2004	4823	ASARCO Globe Site, Denver, CO					
4842 STEELE ST	Yes	280	210	Yes	2005	3968	ASARCO Globe Site, Denver, CO					
4850 CLAYTON ST	Yes	266	245	Yes	2003	NA						
4857 STEELE ST	Yes	67	496	Yes	2004	NA						
4905 CLAYTON ST	Yes	137	106	Yes	2004	3447	ASARCO Globe Site, Denver, CO					
4905 MILWAUKEE ST	Yes	136	255	Yes	2004	NA						
4906 SAINT PAUL ST	Yes	80	251	Yes	2004	NA						
4907 FILLMORE ST	Yes	184	242	Yes	2004	2553	ASARCO Globe Site, Denver, CO					
4908 MILWAUKEE ST	Yes	81	170	Yes	2005	2470	ASARCO Globe Site, Denver, CO					
4909 MILWAUKEE ST	Yes	281	317	Yes	2003	NA						
4912 FILLMORE ST	Yes	96	110	Yes	2013	2479	DADS, Aurora, CO					
4912 MILWAUKEE ST	Yes	150	127	Yes	2004	NA						
4914 SAINT PAUL ST	Yes	140	281	Yes	2004	NA						
4915 FILLMORE ST	Yes	280	230	Yes	2005	3426	ASARCO Globe Site, Denver, CO					
4916 FILLMORE ST	Yes	140	167	Yes	2005	3597	ASARCO Globe Site, Denver, CO					
4916 MILWAUKEE ST	Yes	130	157	Yes	2005	3098	ASARCO Globe Site, Denver, CO					
4917 MILWAUKEE ST	Yes	120	383	Yes	2004	NA						
4920 FILLMORE ST	Yes	170	170	Yes	2005	3528	ASARCO Globe Site, Denver, CO					
4920 MILWAUKEE ST	Yes	291	346	Yes	2003	NA						
4921 MILWAUKEE ST	Yes	92	282	Yes	2004	NA						
4923 SAINT PAUL ST	Yes	160	403	Yes	2005	5010	ASARCO Globe Site, Denver, CO					
4929 STEELE ST	Yes	173	150	Yes	2004	2983	ASARCO Globe Site, Denver, CO					
4930 MILWAUKEE ST	Yes	117	201	Yes	2004	NA						

TABLE 2 PROPERTY STATUS
VB/I-70 OU1 Superfund Site
Denver, Colorado

Address	Soil Sampled	Highest Arsenic Sample Results (ppm)	Average Lead Concentration (ppm)	Soil Removal Required	Soil Removal Complete	Soil Removal (sq ft)	Waste Soil Disposal Location	NEC Filed Recorded Date	NEC Filed Reception Number	NEC Withdrawal Recorded Date	NEC Withdrawal Reception Number	Notes
4932 STEELE ST	Yes	271	114	Yes	2003	NA						
4935 ADAMS ST	Yes	300	159	Yes	2003	NA						
4950 MILWAUKEE ST	Yes	270	365	Yes	2003	NA						
4955 ADAMS ST	Yes	144	170	Yes	2004	4448	ASARCO Globe Site, Denver, CO					
4956 FILLMORE ST	Yes	124	481	Yes	2004	NA						
4956 MILWAUKEE ST	Yes	250	163	Yes	2013	3189	DADS, Aurora, CO					
4957 CLAYTON ST	Yes	119	447	Yes	2005	2779	ASARCO Globe Site, Denver, CO					
4959 ADAMS ST	Yes	175	108	Yes	2004	NA						
4960 FILLMORE ST	Yes	126	277	Yes	2004	NA						
4962 SAINT PAUL ST	Yes	159	250	Yes	2004	NA						
4963 SAINT PAUL ST	Yes	71	176	Yes	2005	4606	ASARCO Globe Site, Denver, CO					
4965 ADAMS ST	Yes	145	156	Yes	2006	2251	ASARCO Globe Site, Denver, CO					
4965 SAINT PAUL ST	Yes	378	314	Yes	2003	NA						
4965 STEELE ST	Yes	90	103	Yes	2005	2947	ASARCO Globe Site, Denver, CO					
4970 FILLMORE ST	Yes	187	205	Yes	2004	NA						
4970 STEELE ST	Yes	141	244	Yes	2004	NA						
4972 FILLMORE ST	Yes	207	171	Yes	2004	NA						
4974 SAINT PAUL ST	Yes	6	93	No								
4975 STEELE ST	Yes	110	263	Yes	2005	4739	ASARCO Globe Site, Denver, CO					
4976 FILLMORE ST	No							6/25/2014	2014074144			
4979 ADAMS ST	Yes	90	143	Yes	2004	4054	ASARCO Globe Site, Denver, CO					
4986 STEELE ST	Yes	81	108	Yes	2004	NA						
4990 ADAMS ST	Yes	97	221	Yes	2004	4835	ASARCO Globe Site, Denver, CO					
4992 STEELE ST	Yes	227	159	Yes	2004	NA						
4995 STEELE ST	Yes	273	264	Yes	2003	NA						
5001 FILLMORE ST	Yes	6	123	No								
5010 STEELE ST	Yes	124	142	Yes	2004	5694	ASARCO Globe Site, Denver, CO					
5016 FILLMORE ST	Yes	220	160	Yes	2004	9581	ASARCO Globe Site, Denver, CO					
5017 ADAMS ST	No							6/25/2014	2014074145			
5020 STEELE ST	Yes	125	141	Yes	2004	NA						
5025 ADAMS ST	Yes	138	189	Yes	2004	NA						
5031 STEELE ST	Yes	88	397	Yes	2004	6862	ASARCO Globe Site, Denver, CO					
5040 ADAMS ST	Yes	148	179	Yes	2004	5664	ASARCO Globe Site, Denver, CO					
5044 STEELE ST	Yes	158	606	Yes	2003							
5045 ADAMS ST	Yes	220	257	Yes	2005	2704	ASARCO Globe Site, Denver, CO					
5050 ADAMS ST	Yes	186	206	Yes	2004	NA						

TABLE 2 PROPERTY STATUS
VB/I-70 OU1 Superfund Site
Denver, Colorado

Address	Soil Sampled	Highest Arsenic Sample Results (ppm)	Average Lead Concentration (ppm)	Soil Removal Required	Soil Removal Complete	Soil Removal (sq ft)	Waste Soil Disposal Location	NEC Filed Recorded Date	NEC Filed Reception Number	NEC Withdrawal Recorded Date	NEC Withdrawal Reception Number	Notes
5058 ADAMS ST	Yes	200	210	Yes	2004	5254	ASARCO Globe Site, Denver, CO					
5060 MILWAUKEE ST	Yes	98	144	Yes	2004	NA						
5060 SAINT PAUL ST	Yes	116	192	Yes	2004	NA						
5064 SAINT PAUL ST	Yes	5	89	No								
5065 MILWAUKEE ST	Yes	77	245	Yes	2004	NA						
5070 STEELE ST	Yes	110	89	Yes	2006	3819	ASARCO Globe Site, Denver, CO					
5071 MILWAUKEE ST	Yes	80	147	Yes	2005	3030	ASARCO Globe Site, Denver, CO					
5075 MILWAUKEE ST	Yes	238	243	Yes	2005	1475	ASARCO Globe Site, Denver, CO					
5075 SAINT PAUL ST	Yes	104	222	Yes	2005	5668	ASARCO Globe Site, Denver, CO					
5088 STEELE ST	Yes	111	116	Yes	2004	4605	ASARCO Globe Site, Denver, CO					
5096 SAINT PAUL ST	Yes	175	93	Yes	2004	NA						
5110 SAINT PAUL ST	Yes	82	273	Yes	2005	5324	ASARCO Globe Site, Denver, CO					
5125 STEELE ST	No							6/25/2014	2014074146			
5182 THOMPSON CT	Yes	11	104	No								
5190 MILWAUKEE ST	No							6/25/2014	2014074147			
5194 SAINT PAUL ST	Yes	5	697	Yes	2013	4061	DADS, Aurora, CO					

Notes

Lead and arsenic were characterized by three composite samples collected at each property.

The soil removal included all accessible soil to a depth of 12 inches. The excavation depth was reduced to prevent damage to large trees and structures.

Acronyms

- AVE

BLVD

CO

CT

DADS

E

NA

NEC

OU1

ppm

sq ft

ST/St

VB/I-70
- avenue

Boulevard

Colorado

court

Denver and Arapahoe Disposal Site

east

not available

notice of environmental/potential environmental conditions

Operable Unit 1

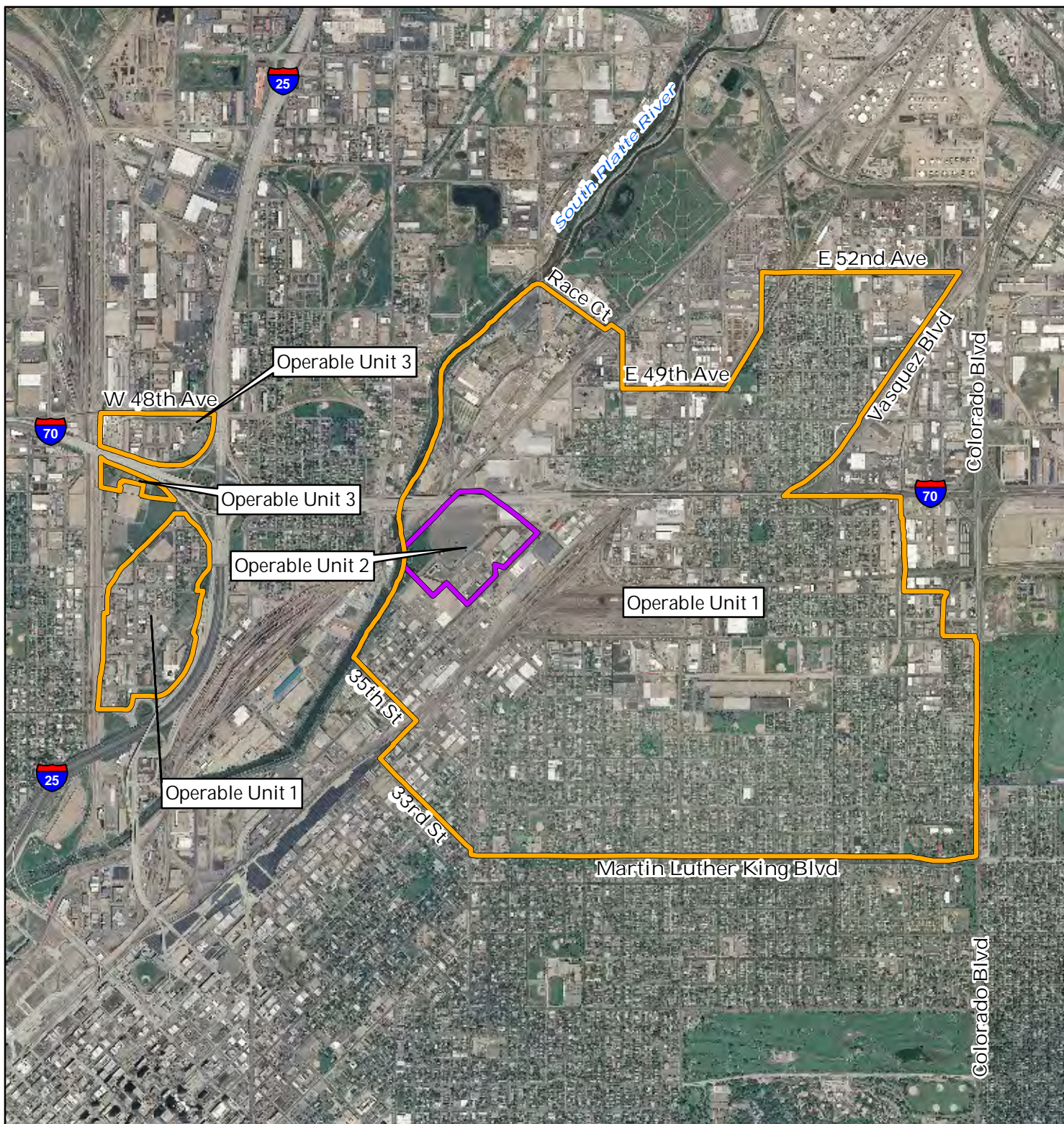
part(s) per million

square foot-feet

street

Vasquez Boulevard and Interstate 70

FIGURES



**Figure 1: Vasquez Blvd. and I-70 Superfund
Site Boundary Map**

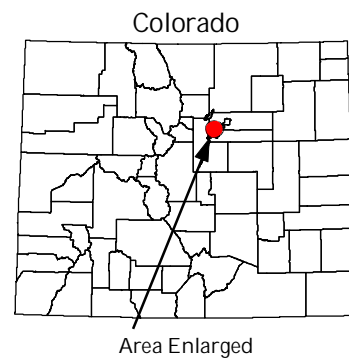
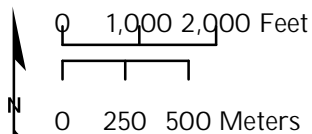
*Denver County,
Colorado*

 NPL
Boundary  Operable Unit
Boundary

Map Date: January 14, 2011

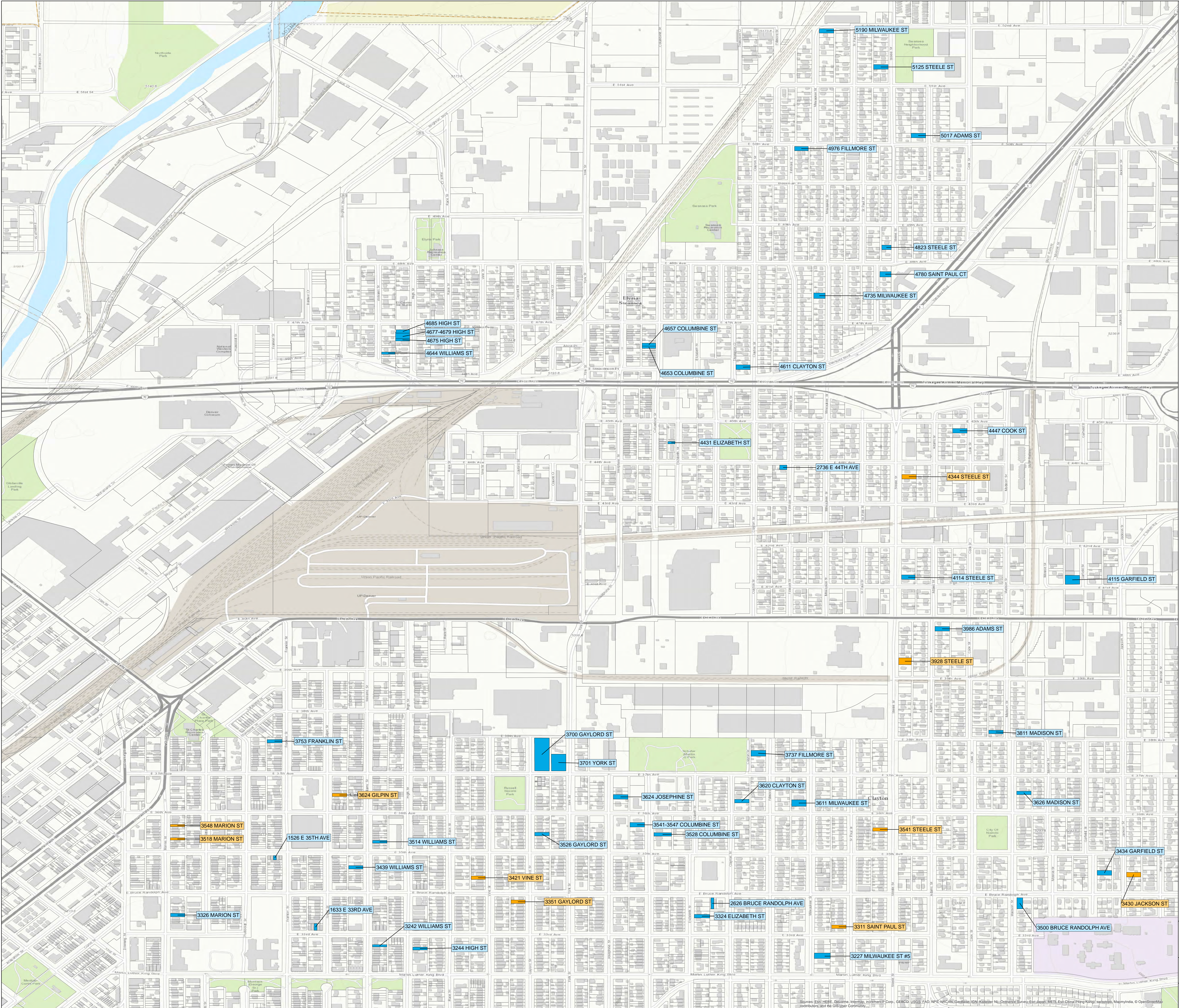
Map Projection: UTM, Meters, 13 North, NAD83

Data Sources: *Boundaries* - U.S. EPA Region 8 (2011);
Imagery - USDA NAIP 1-meter aerial photo (2009).



**Boundaries are based on the nature and extent of contamination and are subject to change.*

PLATES



- LEGEND
- NO FURTHER ACTION
 - NOTICE OF POTENTIAL ENVIRONMENTAL CONDITIONS FILED - SAMPLING OUTSTANDING
 - NOTICE OF ENVIRONMENTAL CONDITIONS FILED - SOIL REMOVAL OUTSTANDING
 - COUNTY LINE

DATA SOURCES:

IMAGERY - ESRI: WORLD TOPO MAP
PARCELS - CITY AND COUNTY OF DENVER (2003)
PARCEL STATUS - U.S. EPA REGION 8 (2015)

STATUS DATE: JULY 16, 2015

N

0 175 350 700 Feet

PROJECTION: GCS NORTH AMERICAN DATUM, NAD 83
SCALE: 1:4200 ONE INCH = 350 FEET

PLATE 1

VASQUEZ BLVD AND I-70 OUTPROPERTIES WITH FILED NOTICES OF ENVIRONMENTAL CONDITIONS

CBI