

Silver Bow Creek / Butte Area

2011 Winter Updates

Bulletin #16

November 28, 2011



Community Engagement Plan Update:

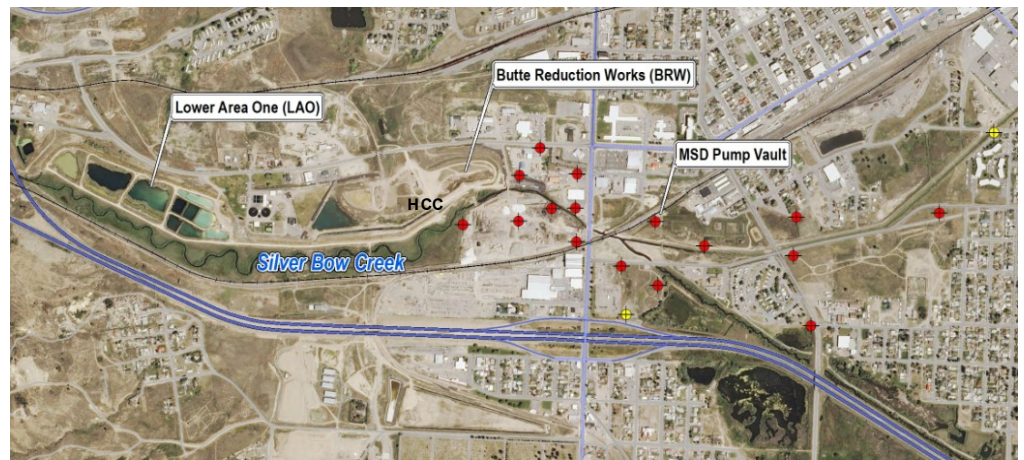
The Environmental Protection Agency is currently soliciting suggestions, ideas, stakeholder relationships and participation through the revision of a Community Engagement Plan. Suggestions implemented before the plan is revised include:

- Fewer acronyms
- More graphics
- Website Updates
- Progress Reports on the Web
- Bulletin distribution in Monday issues of the Montana Standard
- Bulletin distribution to the schools
- Radio shows (Party Line)
- District XII neighborhood outreach
- More public interviews
- Web links to analytical data
- Big picture communication

Ground Water Characterization Update:

Localized well drilling is being conducted to install groundwater monitoring wells in the area between the Metro Storm Drain Pump Vault and the groundwater collection features at Butte Reduction Works. Twenty six wells are currently scheduled to be drilled. Drilling will last until mid December. The wells will help with a better understanding of groundwater quality and flow in this area. Groundwater will continue to be collected at the Metro Storm Drain Pump Vault and the Hydraulic Control Channel (HCC), directed to Lower Area One, and treated, before entering Silver Bow Creek.

Locations of planned groundwater monitoring wells



West side of South Montana Street

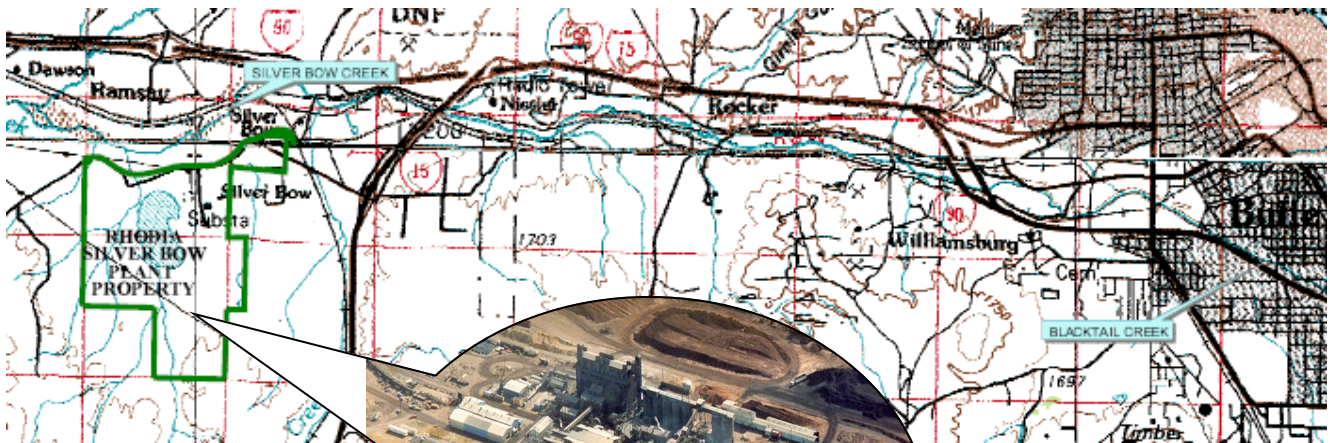


KOA Campground



Rhodia Silver Bow Plant Site Update:

The Rhodia Silver Bow Plant occupies approximately 1.25 square miles south of Ramsay. The plant was constructed in the early 1950s to produce elemental phosphorus. Operations ended in 1997. Rhodia is conducting clean-up activities at and around the facility primarily under the terms of a Resource Conservation and Recovery Act (RCRA) Corrective Action Order issued by the U.S. Environmental Protection Agency (EPA) in 2004. During the plant's years of operation elemental phosphorus and a variety of hazardous wastes were generated, treated, stored, and disposed of at the facility. Interim cleanup activities have been conducted to address many of the most immediate potential environmental hazards. A facility-wide investigation is in progress to determine appropriate long term remedies.



**Rhodia Silver Bow Plant
Elemental Phosphorus
Production Facility**



Do you Need More Information?

Silver Bow Creek/Butte Area

- **U.S. Environmental Protection Agency:** Sara Sparks, Remedial Project Manager, 406-782-7415 or Nikia Greene, Community Involvement Coordinator, 406-457-5019
- **Montana Department of Environmental Quality:** Joe Griffin, Project Officer, 406-560-6060
- **Citizens Technical Environmental Committee:** Janice Hogan, TAG Administrator, 406-723-6247

Rhodia Silver Bow Plant Butte, Montana Site

- **U.S. Environmental Protection Agency:** Larry Kimmel, RCRA Project Manager, Denver CO, 303-312-6659