



# Community Involvement Plan Update

## Vasquez Boulevard and I-70 Superfund Site



## Contents

Introduction.....	4
EPA’s Community Involvement Program.....	4
Site Description.....	5
OU1.....	5
OU2.....	6
OU3.....	6
Community Profiles.....	8
Elyria-Swansea and Globeville.....	8
Community Organizations and Institutions.....	9
Environmental Justice.....	10
Community Concerns.....	13
Cleanup.....	13
Human Health.....	14
Communication Preferences.....	15
Community Involvement Action Plan.....	16
Ongoing Communication.....	16
Communication Tools.....	16
Email Updates and Fact Sheets.....	16
Community Meeting Attendance.....	16
Social Media.....	17
Websites.....	17
Mailing List.....	17
News Media.....	17
Information Repositories.....	17
Plan de Acción de Participación Comunitaria.....	19
Comunicación Continua.....	19
Herramientas de Comunicación.....	19
Actualizaciones por Correo Electrónico y Hojas de Datos.....	20
Asistencia a Reuniones Comunitarias.....	20
Medios de Comunicación Social.....	20
Sitios Web.....	20
Lista de Correo.....	21
Medios de Comunicación.....	21
Repositorios de Información Sobre el Sitio.....	21
Appendix.....	23

Contact List .....	24
State Elected Officials.....	24
Local Officials .....	24
Federal, State and Local Agencies.....	24
List of Acronyms Used.....	25
Vasquez Boulevard and I-70 Community Involvement Plan Interview Questions.....	26
Reference List .....	27

## Figures

Figure 1 - Site Location .....	7
Figure 2 - Neighborhood Boundaries.....	11
Figure 3 - Industrial and Residential Land Uses, by Parcel, in Neighborhoods at the Site .....	12

## Tables

Table 1 - Demographics of Elyria Swansea, and Globeville Neighborhoods.....	10
Table 2 - EPA Community Involvement Activities.....	18

## INTRODUCTION

The goal of this updated Community Involvement Plan (CIP) is to encourage and facilitate community engagement for the Vasquez Boulevard and I-70 Superfund Site (Site) and update the Site's 2010 CIP. The U.S. Environmental Protection Agency (EPA) will use this plan as a road map for future communication about the Site. Active and effective public involvement at the Site is vitally important. EPA's community involvement activities at the Site are designed to inform the public about all cleanup activities and include the community in the decision-making process.

EPA defines the "community" as the people and organizations near the Site who are interested in it and who may be affected by it. EPA also recognizes that other stakeholders, including local, state and federal agencies, may have an interest in the Site. This CIP is based on a series of interviews in 2019 with the affected community and stakeholders in accordance with EPA's Superfund community involvement and cleanup guidance. The CIP is a "living document," meaning that it can be updated or revised over the course of Site cleanup to reflect long-term changes in the community.

## EPA's Community Involvement Program

Active and participatory community involvement is an important part of the cleanup process and it is also a requirement of Superfund law. Community involvement is regulated under the Comprehensive Environmental Response, Compensation, and Liability Act (CERCLA), also known as "Superfund." This CIP follows community involvement requirements in the Superfund Amendments and Reauthorization Act of 1986 (SARA) §117 and the National Oil and Hazardous Substances Pollution Contingency Plan (NCP) §300.430. EPA's Community Involvement Program is designed to facilitate the participation of community members throughout the cleanup process, including investigations and remedy selection. EPA works closely with state and local agencies to provide community involvement throughout the Superfund process.

## SITE DESCRIPTION

The 4.5-square-mile area is in the north-central section of the city and county of Denver, Colorado. Historically, the area was a major smelting center in the western United States. Beginning as early as the 1870s, two smelting plants – Omaha & Grant and Argo – operated at the Site. They refined gold, silver, copper, lead and zinc until the early 1900s, when operations ceased. Operations deposited heavy metals in area soils and contaminated groundwater at the smelter locations. After the discovery of Site contamination, EPA listed the Site on the Superfund program’s National Priorities List (NPL) in July 1999. To manage Site investigations and cleanup, EPA divided the Site into three operable units (OUs). OU1 is residential soils. OU2 is the former Omaha & Grant Smelter Site. OU3 is the former Argo Smelter Site.

### OU1

OU1 included all or part of five neighborhoods – Cole, Clayton, Elyria-Swansea, southwest Globeville and Curtis Park. OU1 included residential yards in the Site area where levels of lead and/or arsenic in soil presented an unacceptable risk to human health. There were about 4,500 residential properties in OU1, most of which were single-family homes. OU1 also included some multi-family homes, apartment buildings, schools and parks but did not include commercial and industrial properties. EPA sampled 99 percent of residential properties in OU1 and removed contaminated soil from about 800 of those that needed it. EPA removed contaminated soil to a depth of 12 inches and replaced it with clean soil. There are institutional controls (notices on the property file and annual mailings) in place for the few remaining properties where the property owner denied EPA access to test and remove contaminated soil. EPA and the Colorado Department of Public Health and the Environment (CDPHE) deleted OU1 from the NPL in September 2019.



*Homes in the Cole neighborhood.*



*Before-and-after views of the residential soil cleanup at OU1.*

## OU2

The 50-acre OU2 area is in a historically industrial area of north Denver. In 1992, CDPHE found widespread soil and groundwater contamination in the vicinity of the former smelter. The investigation determined that surface and subsurface soils were contaminated with arsenic and lead. In 2018, the city and county of Denver dug up and removed the contaminated materials as part of the Globeville Landing Outfall Project. EPA is currently conducting additional investigations for OU2 and expects to issue a proposed cleanup plan to address remaining contamination in 2019. Current land uses in the area include the Denver Coliseum, part of Globeville Landing Park and surrounding businesses. Surrounding land uses include residential, commercial and industrial areas.

## OU3

OU3 includes the area of the former Argo smelter facility. The area is currently paved and includes commercial and industrial land uses. It is bounded by 48th Avenue, Interstate 70, Lincoln Street and Huron Street, at the intersection of Interstate 70 and Interstate 25. Surrounding land uses include residential, commercial and industrial areas. EPA is conducting ongoing groundwater investigations.

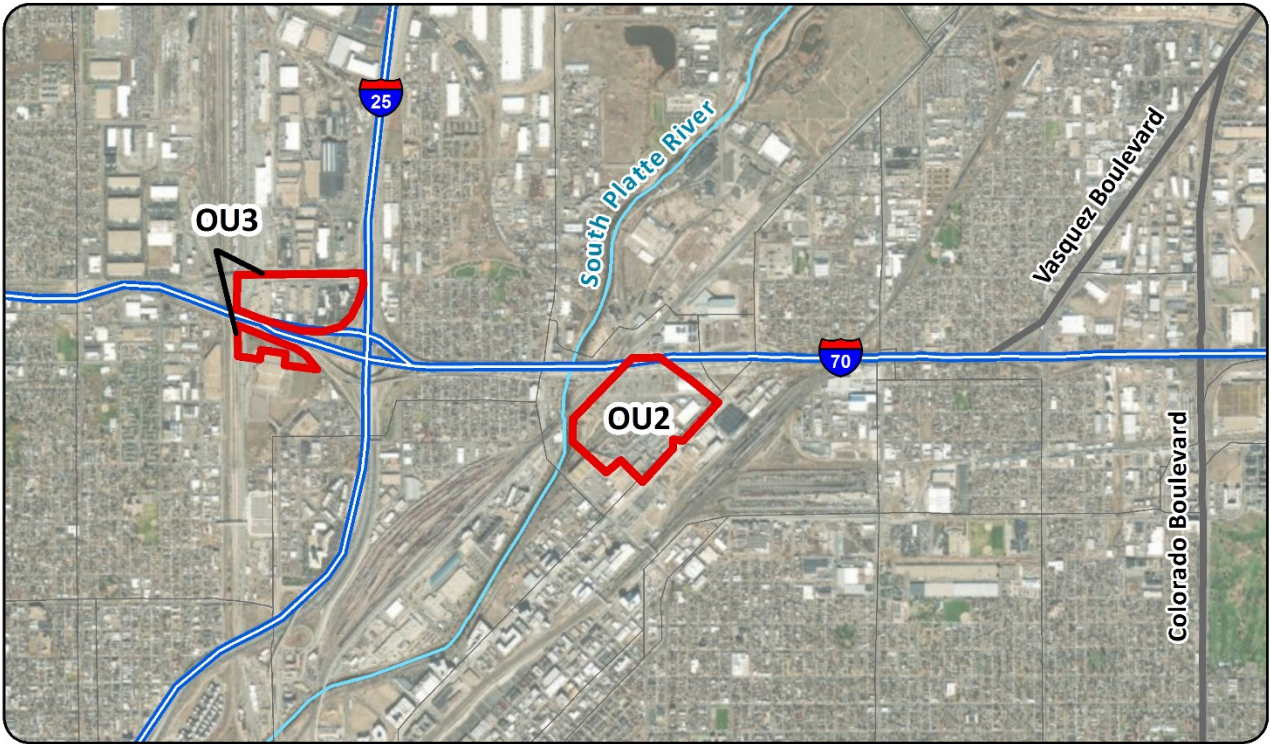
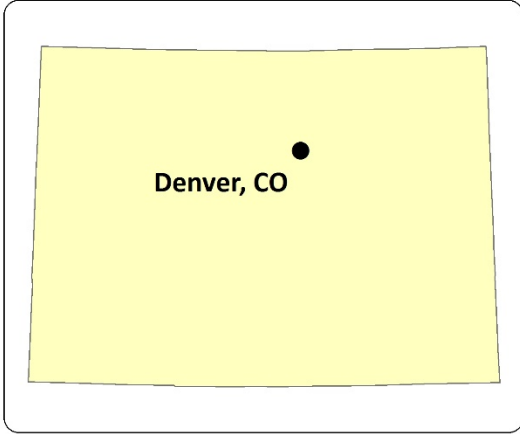


*View of the Pepsi Bottling Company facility located south of the Site.*



*View of the Denver Coliseum, located near the Site.*


Figure 1 - Site Location



0 0.25 0.5 1 Miles

Sources: Esri, DigitalGlobe, GeoEye, Earthstar Geographics, CNES/Airbus DS, USDA, USGS, AeroGRID, IGN, the GIS User Community, City and County of Denver Community Development and Planning and the Vasquez Boulevard and I-70 2014 FYR.

**Legend**

 Approximate Operable Unit (OU) Boundary



**Vasquez Boulevard/I-70 Superfund Site**  
City of Denver, Denver County, Colorado

## COMMUNITY PROFILES

### Elyria-Swansea and Globeville

Elyria-Swansea and Globeville were once separate towns, established in the 1870s and 1880s as rail lines and smelters arrived in the area.<sup>1</sup> Rail lines also supported the shipping of livestock. By the 1900s, there were several stockyards and meatpacking facilities in Elyria-Swansea and Globeville, including the Denver Union Stockyards. The Denver Union Stockyards became a driving force behind the National Western Stock Show, which was first held in 1906 and continues today.<sup>2</sup>

Stockyards, packing plants and smelters attracted immigrants from Poland, Croatia and other European countries.<sup>3</sup> Many workers lived in settlements near the industries. Several churches built by the Central and Eastern European immigrants still exist today, including St. Joseph Polish Church in Globeville.

From the outset, Elyria-Swansea and Globeville were separated by physical barriers such as the South Platte River and railroads. In the mid-20<sup>th</sup> century, two interstate highways further disconnected the neighborhoods. In 1958, Interstate 25 divided Globeville in half, limiting east-west access. In 1964, Interstate 70 divided Globeville and Elyria-Swansea, restricting north-south access in both neighborhoods. Although highway construction disrupted the neighborhood decades ago, its lingering effects are still evident in Elyria-Swansea and Globeville today.<sup>4</sup>

Elyria-Swansea and Globeville remain industrial centers and transportation corridors due in part to the highways and railroad lines that run across the neighborhoods.<sup>5</sup> They also continue to be a home for immigrants. Though some descendants of the earlier settlers still live in the area, today most neighborhood residents are of Hispanic descent. Many have lived and worked in Elyria-Swansea and Globeville for multiple generations.<sup>6</sup> Today, Elyria-Swansea and Globeville are home to over 6,920 and 4,170 people, respectively, and consist of residential, commercial and industrial areas.<sup>7</sup>



*Homes in the Elyria-Swansea neighborhood.*

---

<sup>1</sup> Community Involvement Plan. Vasquez Boulevard/Interstate-70 Superfund Site. Prepared by the United States Environmental Protection Agency Region 8 and Summit Technical Resources, Inc. May 2005.

<sup>2</sup> National Western Center Master Plan. City and County of Denver, Colorado State University, Western Stock Show Association, Denver Museum of Nature & Science and History Colorado. March 2015.

<sup>3</sup> Globeville Neighborhood Assessment. Denver Department of Planning and Community Development. January 2008. Denver, Colorado.

<sup>4</sup> How Neighborhood Planning Affects Health in Globeville and Elyria Swansea. Denver Department of Environmental Health. September 2014. Denver, Colorado.

<sup>5</sup> Elyria and Swansea Neighborhoods Plan. Denver Department of Environmental Health. February 2015. Denver, Colorado.

<sup>6</sup> Globeville Elyria-Swansea: The Peoples' Survey. Prepared by Front Range Economic Strategy Center for the Globeville Elyria-Swansea Coalition Organizing for Health and Housing Justice. November 2017.

<sup>7</sup> U.S. Census Bureau. 2012 to 2016 American Community Survey, Five-Year Estimate.



## Community Organizations and Institutions

*The Elyria-Swansea-Globeville Business Association*, an organization of more than 50 businesses that advocates for residents and businesses in the two neighborhoods.

*The Globeville Elyria-Swansea Coalition*, a group of resident leaders, community organizers, organizations and allies focused on health and housing justice.

*GrowHaus*, a non-profit organization that operates an indoor farm, marketplace and educational center in Elyria-Swansea.

*Focus Points Family Resource Center*, a non-profit organization that provides English classes, workforce development opportunities and early childhood education in Elyria-Swansea and Globeville.

*Vasquez Boulevard Community Advisory Group (CAG)*, a group of community representatives serving as the focal point for the exchange of information among the local community and EPA and CDPHE regarding the Site.



*Sign welcoming visitors to the Globeville neighborhood.*

**Table 1 - Demographics of Elyria-Swansea and Globeville Neighborhoods<sup>7</sup>**

Metric Used	Elyria-Swansea	Globeville	City of Denver
Total Population	6,920	4,170	663,303
Median Household Income	\$43,585	\$35,389	\$56,258
Median Age	28.9	28.5	34.2
For those identifying as one race only: White	81.17%	78.71%	76.95%
African American	4.55%	5.16%	9.77%
American Indian and Alaska Native	1.37%	0.24%	0.94%
Asian	0.13%	0.17%	3.50%
Native Hawai'ian and Other Pacific Islander	0%	0.19%	0.06%
Some other race	11.91%	10.98%	5.36%
Identifying as two or more races	0.87%	4.56%	3.42%
Hispanic or Latino (of any race)	82.51%	59.30%	30.76%
Population Born in a Foreign Country	35.74%	21.44%	15.86%
Population that Speaks English "Less Than Very Well"	28.38%	20.60%	10.80%
Population with a High School Education	14.48%	21.08%	17.6%
Population with a bachelor's degree	5.09%	4.87%	28.0%

## Environmental Justice

Environmental justice is the fair treatment and meaningful involvement of all people regardless of race, color, national origin or income with respect to the development, implementation and enforcement of environmental laws, regulations and policies. Fair treatment means no group of people should bear a disproportionate burden of environmental harms and risks, including those resulting from the negative environmental consequences of industrial, governmental and commercial operations or programs and policies.

Figure 2 - Neighborhood Boundaries

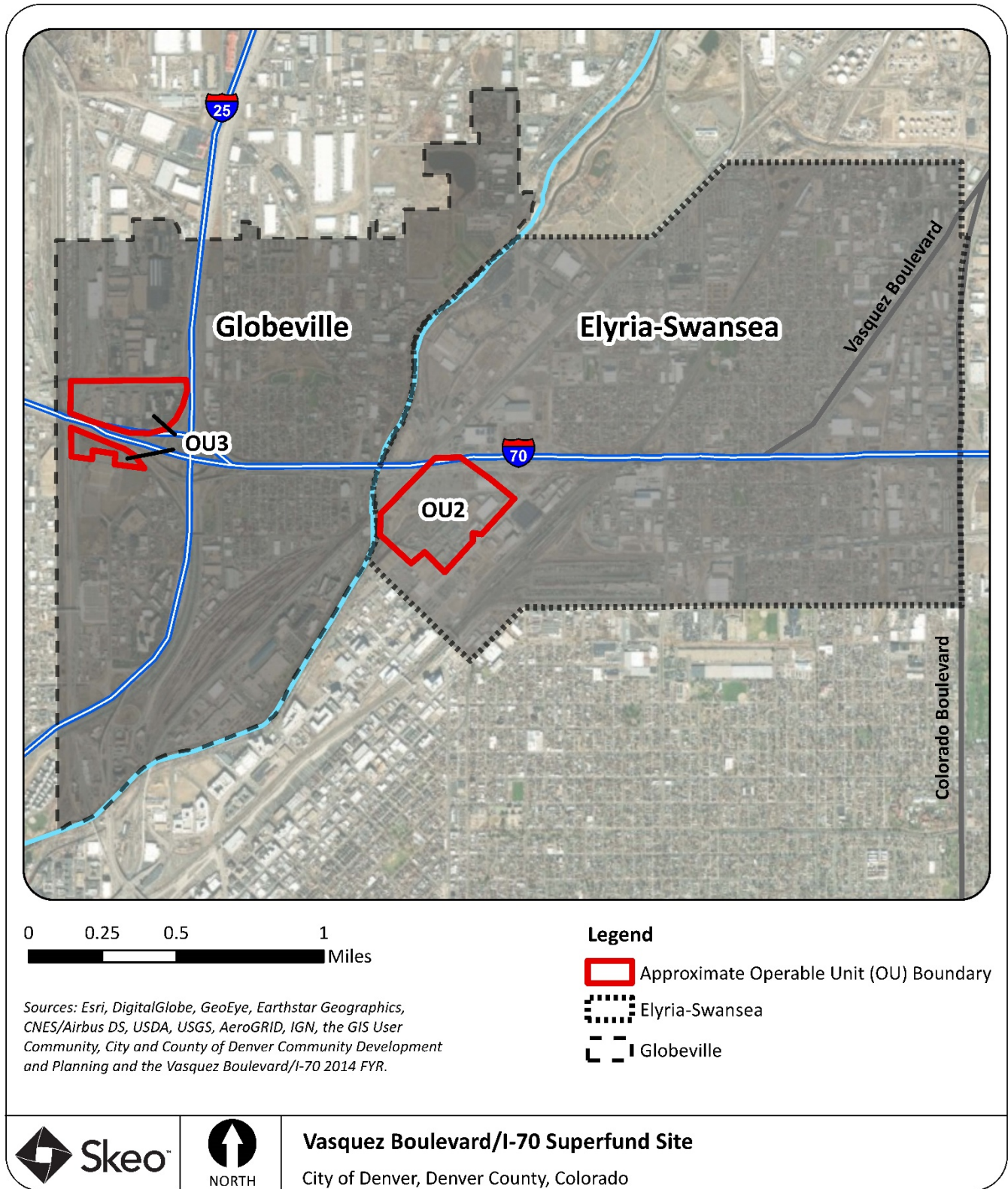
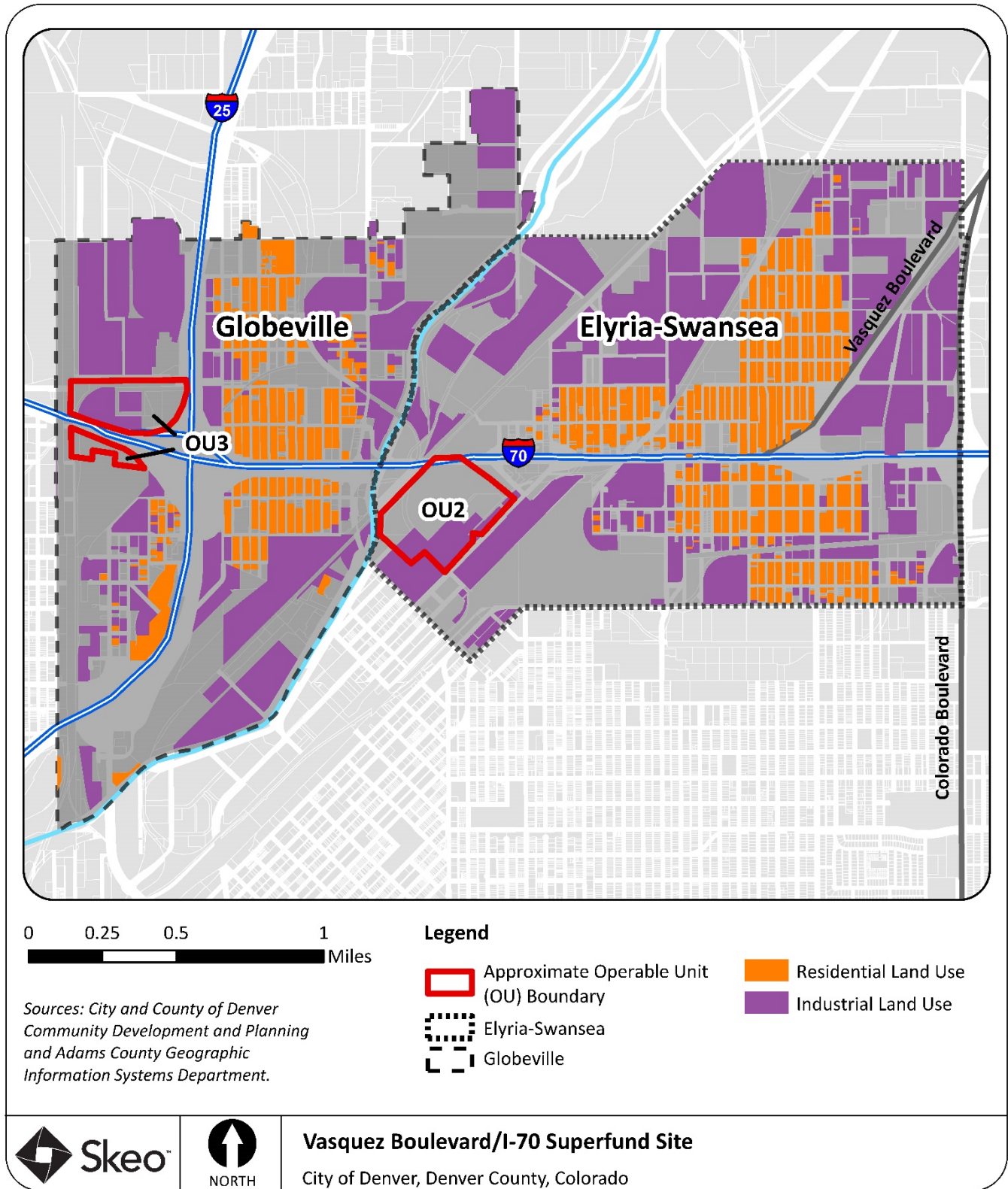


Figure 3 - Industrial and Residential Land Uses, by Parcel, in Neighborhoods at the Site



## COMMUNITY CONCERNS

Community concerns are fundamental to CIP development and community outreach activities. To better understand these concerns, EPA conducted in-person interviews with Site stakeholders in April 2019. People interviewed included local government officials, on-site business representatives, members of the CAG, staff from other local organizations, concerned citizens and local residents. Interviewees were asked questions about their experiences and knowledge of Site conditions, their concerns, and their preferred methods of communication. For the complete list of interview questions, refer to the Appendix.

The interviews provided EPA with useful and valuable information that has been incorporated into the CIP. Comments from the stakeholder interviews are summarized in three categories below – cleanup, human health and community involvement.

### Cleanup

All interviewees were extensively familiar with OU1, from the history of the contamination through the completion of cleanup activities. Of the interviewees who live in OU1, all had their properties sampled by EPA. Two individuals confirmed that they had their properties excavated during the cleanup action phase. Several interviewees said there are other community members who are not well informed about the Site's history, investigations and cleanup to date.

A number of people felt the cleanup had been thorough and beneficial for the community. They said that people felt more confident that they could use their property for gardening and that their children could play safely. One person added that the Community Health Program aspect to the cleanup was positive communication for the community. However, some stakeholders and community members felt differently and raised concerns about the thoroughness of the OU1 cleanup. They asked whether excavation to 12 inches was sufficient to remove all contaminated material. Some interviewees said that there are physical mechanisms that could bring any remaining contaminated material to the surface. They said that while surface soil cleanup activities were completed effectively and have been beneficial for the community, they are not a permanent solution for the contamination.

People are also concerned about the impacts of excavation at OU1 properties and other properties near the Site. They worry that digging for home renovations and the Central 70 Project could expose residents to additional contamination. They believe that few controls are in place to make sure digging activities do not pose a risk to human health.

Almost every interviewee was familiar with the proposal for OU1 deletion. One person was not aware of it and asked why EPA wanted to delist the area. Another person expressed disappointment that EPA did not update the CIP prior to issuing the OU1 deletion proposal. Several people are concerned that the OU1 deletion will benefit developers looking to build in the OU1 area because they may not have to deal with any Superfund jurisdiction. Others said that delisting the OU could result an increase in local property values, benefiting OU1 homeowners.

Most interviewees were also familiar with OU2 and OU3. Some people said they would like to learn more about the nature and extent of contamination and next steps at OU2 properties. People know that the proposed cleanup plan is expected to be released in 2019 and would like to know more about it. Interviewees also said they would like to know more about upcoming OU3 activities.

Several interviewees expressed concern about the Globeville Landing Outfall Project near OU2, particularly regarding related digging activities, given that contaminated soils remain in the OU2 area. Some people said

this was more of a concern in the past. Other people said that the project unearthing contaminated soils and affecting public health remains a community concern.

## Human Health

People were concerned about ongoing health impacts from the Site. Some people were worried about gardening in their yards and ingesting contaminants through homegrown vegetables. One resident said that chronic health issues in their family, including developmental disabilities, cancer and miscarriages, are connected to Site contamination. The resident also said that many children in the community are born with brain issues and asthma. Some interviewees said that the action levels established for arsenic and lead were too high. As a result, they are concerned about potential health impacts for OU1 residents in the future.

Many interviewees were concerned about ongoing redevelopment in the area, asking what agency is overseeing environmental conditions in the long term. Some were also concerned about risks at commercial/industrial areas outside of EPA's OU1 residential property scope. Several interviewees were worried about residual risk from contaminants they believe remain at depth and wonder why EPA did not more conclusively determine the source of the contamination.



*Homes in the Elyria-Swansea neighborhood.*

## COMMUNICATION PREFERENCES

Several interviewees said they receive regular information updates regarding the Site many from agency emails. Many interviewees said that they get Site information through their own research or through CAG meetings rather than through regular EPA communication. People doing their own research said that the EPA and city and county of Denver's websites and Site information at the local library have been good sources of information.

When asked about ways to keep the community well informed moving forward, people requested:



**Updates on the EPA and city and county of Denver websites.**



**EPA attendance at neighborhood and public meetings.**



**Flyers posted at community hub areas.**



**Updates sent through the email list.**



**Complete collection of Site documents at the Site repository.**



**Social media (e.g., Nextdoor).**

People would like more information about Site risks, the Site cleanup timeline, cleanup standards and goals, the community's entry points into the process and future plans for OU2. One person said they would like access to Site sampling data during the investigations. People also said that information about the Site needs to be more digestible for lay people who may not have the resources to understand technical language. They stressed that more information should be available for people who have recently moved to the community, so they can easily access information about their property. People would also like to know which properties in OU1 have restrictions on them.

## COMMUNITY INVOLVEMENT ACTION PLAN

To ensure fair and meaningful public involvement at the Site, EPA will:

- Promote greater community awareness of the Site by making Site-related information accessible and available in a timely manner.
- Publicize future opportunities for community engagement and input.
- Maintain public engagement efforts over the long term to make sure stakeholders have equal access to the Superfund decision-making process and the same degree of protection from environmental and health hazards regardless of race, color, national origin or income.

EPA proposes the following activities to accomplish these goals.

### Ongoing Communication

EPA will ensure that important Site updates and information are shared directly with the public. The interviewees made clear that an ongoing EPA presence is very important to the community. EPA will make sure that community members are well informed about upcoming Site events, and especially activities that include public comment periods. EPA will also communicate to the public about surrounding development projects if they might affect the Site. EPA will also share summaries highlighting Site-related progress to date. These outreach materials will include non-technical language so that every community member will be well informed about the Site's current status. Finally, EPA will continue to publish materials in Spanish as well as English.

### Communication Tools

Interviewees requested a combined approach to information sharing. This means that EPA will use several methods to provide the community with information, including fact sheets, community meetings, print and social media updates, and mailing list mailings. The goal will be to promote continued collaboration and to establish a deeper connection between EPA and the community. EPA is committed to providing the community with accurate, up-to-date information and regular updates on Site activities and cleanup progress.

### Email Updates and Fact Sheets

EPA will share email updates about Site cleanup, investigations and upcoming community meetings. Information included in email updates will be clear and easy to read (in English and Spanish). Fact sheets may also include graphics such as maps, photographs and diagrams to clarify technical information. EPA will continue to maintain and expand the email list so that it includes a broad audience that is representative of the community and stakeholders.

When necessary, EPA will also distribute fact sheets on major Site activities. Fact sheets will include contact information for EPA staff. EPA will ensure the fact sheets are available at the Site repository (Valdez-Perry Branch Library) and community hubs such as the GrowHaus, libraries, grocery stores and recreation centers. EPA will also share fact sheets digitally through email.

### Community Meeting Attendance

EPA will identify appropriate opportunities and venues to share Site information with key neighborhood organizations including, but not limited to:



- The Elyria-Swansea-Globeville Business Association
- The Globeville Elyria-Swansea Coalition
- National Western Citizen's Advisory Committee

Different meeting formats may be used, depending on the topic, situation and organization. Meeting formats may include informal question-and-answer sessions as well as more formal presentations.

EPA will also host meetings specifically to receive public comments for significant Site decisions. During these meetings, EPA will ask for community input. Notices for the public meetings will be posted on EPA and city and county of Denver websites as well as on social media. EPA will also send to news media outlets and distribute the notice through the Site mailing list.

## Social Media

EPA will use social media outlets such as Facebook and Nextdoor to publicize important Site information and to post notices for community meetings with EPA attendance.

## Websites

EPA will continue to maintain the Site website (<https://www.epa.gov/superfund/vb-i70>). The website will:

- Provide an overview and history of the Site and EPA's involvement.
- Share updated information about Site activities with the public.
- Provide access to Site-related documents.

For more information on EPA's Superfund program, EPA Region 8 and Superfund community involvement, please see the websites below.

National Superfund Program: [www.epa.gov/Superfund](http://www.epa.gov/Superfund)

EPA Region 8: <https://www.epa.gov/aboutepa/epa-region-8-mountains-and-plains>

Superfund Community Involvement: [www.epa.gov/superfund/superfund-community-involvement](http://www.epa.gov/superfund/superfund-community-involvement)

## Mailing List

EPA will continue to maintain and update the Site mailing list. The list has been developed from meeting sign-in sheets, community interviews, and email and telephone inquiries. To be added to the mailing list, please send a request by email, telephone or standard mail to EPA (see the Appendix for contact information).

## News Media

Many of the people interviewed said that they get their local news most from The Denver Post, followed by The Denverite, then Colorado Public Radio and Facebook, with the Colorado Sun, Telemundo, Univision, local TV news, area registered neighborhood associations, El Semanario, El Comercial, and word of mouth all getting a mention. EPA will distribute Site information through a combination of some of these channels, as appropriate.

## Information Repositories

EPA has established and will continue to maintain an information repository in the community where Site documents can be reviewed. The information repository is located at the Valdez-Perry Branch Library at

4690 Vine Street, Denver, Colorado, 80216. Community members can also access Site documents at the EPA Region 8 Records Center, located at 1595 Wynkoop Street, Denver, Colorado, 80202-1129.

Each information repository includes copies of Site deliverables (e.g., work plans and reports), monitoring and progress reports, Five-Year Reviews, the CIP, and other data and information designated by EPA. These documents may be reviewed during normal library hours.

Table 2 summarizes the communication tools that EPA will use to engage with the community. Table 2 expands on the activities listed in the 2010 CIP by adding new tools and specific timeframes based on key interview findings.

**Table 2 - EPA Community Involvement Activities**

<b>Activity</b>	<b>Purpose</b>	<b>When</b>	<b>How</b>
Emails and Fact Sheets	Share updates on current Site activities and upcoming community meetings in English and Spanish	As needed	Emails, Fact Sheets
Community Meeting Attendance	Attend community meetings	As needed	Community Meeting Attendance
Social Media	Publicize Site-related notices and community meetings using Facebook and Nextdoor	As needed	Online through Facebook and Nextdoor
EPA Website	Host Site documents that cover Site background, activities, events and technical information	As needed	Online
State Health Department Website	Share Site background, Site activity, CAG meeting and public event information	Ongoing and as needed	Online
City and County of Denver Website	Share Site background, Site activity, CAG meeting and public event information	Ongoing and as needed	City and County of Denver website
News Media	Publicize Site-related notices and community meetings on newspaper and television stations	As needed	In print and online on news websites

Activity	Purpose	When	How
Mailing List	Update the Site mailing list using meeting sign-in sheets, community interviews, and email and phone inquiries	As needed	Online through email and by telephone
Information Repositories	House printed copies of Site documents	As needed	Valdez-Perry Branch Library

## PLAN DE ACCIÓN DE PARTICIPACIÓN COMUNITARIA

Para garantizar una participación pública justa y significativa en el Sitio, la EPA:

- Promoverá una mayor conciencia de la comunidad sobre el Sitio al hacer que la información relacionada con el Sitio sea accesible y disponible de manera oportuna.
- Publicará oportunidades futuras para la participación y el aporte de la comunidad.
- Mantendrá los esfuerzos de participación pública a largo plazo para garantizar que las partes interesadas tengan el mismo acceso al proceso de toma de decisiones del programa Superfund y el mismo nivel de protección contra los riesgos ambientales y de salud, independientemente de la raza, el color, el origen nacional o los ingresos.

La EPA propone las siguientes actividades para lograr estos objetivos.

### Comunicación Continua

La EPA asegurará de que las actualizaciones e información importantes del Sitio se compartan directamente con el público. Los entrevistados dejaron en claro que la presencia continua de la EPA es muy importante para la comunidad. La EPA asegurará de que los miembros de la comunidad estén bien informados sobre los próximos eventos del Sitio, y especialmente las actividades que incluyen períodos de comentarios públicos. La EPA también comunicará al público sobre los proyectos de desarrollo cerca del Sitio si pudieran afectar el Sitio. La EPA también compartirá resúmenes destacando el progreso relacionado con el Sitio hasta la fecha. Estos materiales de divulgación incluirán un lenguaje no técnico para que todos los miembros de la comunidad estén bien informados sobre el estado actual del Sitio. Finalmente, la EPA continuará publicando materiales en español e inglés.

### Herramientas de Comunicación

Los entrevistados solicitaron un enfoque combinado para compartir información. Esto significa que la EPA utilizará varios métodos para proporcionar información a la comunidad, incluyendo hojas informativas, reuniones comunitarias, actualizaciones impresas y de redes sociales, y mensajes enviados por listas de correo. El objetivo será promover la colaboración continua y establecer una conexión más profunda entre la EPA y la comunidad. La EPA se compromete a proporcionar a la comunidad información precisa y actualizada tanto como actualizaciones periódicas sobre las actividades del Sitio y el progreso de la limpieza.

## Actualizaciones por Correo Electrónico y Hojas de Datos

La EPA compartirá actualizaciones por correo electrónico sobre la limpieza del Sitio, investigaciones y próximas reuniones comunitarias. La información incluida en las actualizaciones por correo electrónico será clara y fácil de leer (en inglés y español). Las hojas informativas también pueden incluir gráficos como mapas, fotografías y diagramas para aclarar la información técnica. La EPA continuará manteniendo y expandiendo la lista de correo electrónico para que incluya una audiencia amplia que sea representativa de la comunidad y las partes interesadas.

Cuando sea necesario, la EPA también distribuirá hojas informativas sobre las principales actividades del Sitio. Las hojas de datos incluirán información de contacto para el personal de la EPA. La EPA asegurará de que las hojas informativas estén disponibles en el repositorio de información sobre el Sitio (Biblioteca de la Sucursal Valdez-Perry) y en centros comunitarios como GrowHaus, otras bibliotecas, supermercados y centros de recreación. La EPA también compartirá hojas de datos digitalmente por correo electrónico.

## Asistencia a Reuniones Comunitarias

La EPA identificará oportunidades y lugares apropiados para compartir información del Sitio con organizaciones vecinales clave que incluyen, entre otras:

- La Asociación Empresarial Elyria-Swansea-Globeville
- La Coalición Globeville Elyria-Swansea
- Grupo asesor de ciudadanos del National Western Center

Se pueden utilizar diferentes formatos de reunión, según el tema, la situación y la organización. Los formatos de reunión pueden incluir sesiones informales de preguntas y respuestas, así como presentaciones más formales.

La EPA también organizará reuniones con el propósito específico de recibir comentarios públicos para decisiones importantes del Sitio. Durante estas reuniones, la EPA solicitará aportes de la comunidad. Los avisos para las reuniones públicas se publicarán en los sitios web de la EPA y la ciudad y el condado de Denver, así como en las redes sociales y se enviarán a los medios de comunicación. La EPA también distribuirá el aviso a través de la lista de correo del Sitio.

## Medios de Comunicación Social

La EPA utilizará medios de comunicación social como Facebook y Nextdoor para publicitar información importante del Sitio y publicar avisos para reuniones comunitarias con asistencia de la EPA.

## Sitios Web

La EPA continuará manteniendo el sitio web del Sitio (<https://www.epa.gov/superfund/vb-i70>). El sitio web:

- Proporcionará una visión general e historia del Sitio y la participación de la EPA.
- Compartirá información actualizada sobre las actividades del Sitio con el público.
- Proporcionará acceso a documentos relacionados con el Sitio.

Para obtener más información sobre el programa Superfund de la EPA, la Región 8 de la EPA y la participación comunitaria del programa Superfund, consulte los siguientes sitios web.

Programa Nacional de Superfund: [www.epa.gov/Superfund](http://www.epa.gov/Superfund)

Región 8 de la EPA: <https://www.epa.gov/aboutepa/epa-region-8-mountains-and-plains>

Participación comunitaria del programa Superfund: [www.epa.gov/superfund/superfund-community-involvement](http://www.epa.gov/superfund/superfund-community-involvement)

## Lista de Correo

La EPA continuará manteniendo y actualizando la lista de correo del Sitio. La lista se ha desarrollado a partir de hojas de registro de reuniones, entrevistas comunitarias y consultas por correo electrónico y teléfono. Para ser agregado a la lista de correo, envíe una solicitud por correo electrónico o correo común, o llame por teléfono a la EPA (consulte el Apéndice para obtener información de contacto).

## Medios de Comunicación

Muchas de las personas entrevistadas dijeron que obtienen sus noticias locales más de The Denver Post, seguidas por The Denverite, luego Colorado Public Radio y Facebook. También recibieron mención Colorado Sun, Telemundo, Univisión, noticias locales de televisión, asociaciones de vecinos registradas del área, El Semanario, El Comercial, y comunicación boca a boca. La EPA distribuirá información del Sitio a través de una combinación de algunos de estos canales, según corresponda.

## Repositorios de Información Sobre el Sitio

La EPA ha establecido y continuará manteniendo un repositorio de información en la comunidad donde se pueden revisar los documentos del Sitio. El repositorio de información se encuentra en la Biblioteca de la Sucursal Valdez-Perry en 4690 Vine Street, Denver, Colorado, 80216. Los miembros de la comunidad también pueden acceder a los documentos del Sitio en el Centro de Registros de la Región 8, ubicado en 1595 Wynkoop Street, Denver, Colorado, 80202-1129.

Cada depósito de información incluye copias de los productos de trabajo del Sitio (por ejemplo, planes de trabajo e informes), informes de monitoreo y progreso, revisiones de cada cinco años, el CIP y otros datos e información designados por la EPA. Estos documentos pueden revisarse durante el horario normal de la biblioteca.

La Tabla 2 resume las herramientas de comunicación que la EPA utilizará para relacionarse con la comunidad. La Tabla 2 amplía las actividades enumeradas en el CIP de 2010 al agregar nuevas herramientas y plazos específicos basados en los hallazgos clave de las entrevistas.

**Tabla 3 – Actividades de Participación Comunitaria de la EPA**

Actividad	Propósito	Cuando	Cómo
Correos electrónicos y hojas informativas	Compartir actualizaciones sobre las actividades actuales del Sitio y las próximas reuniones comunitarias en inglés y español.	Según sea necesario	Correos electrónicos y hojas informativas
Asistencia a reuniones comunitarias	Asistir a reuniones comunitarias	Según sea necesario	Asistencia a reuniones comunitarias

Actividad	Propósito	Cuando	Cómo
Medios de comunicación social	Publicar avisos relacionados con el Sitio y reuniones comunitarias usando Facebook y Nextdoor	Según sea necesario	En línea a través de Facebook y Nextdoor
Sitio web de la EPA	Brindar acceso a documentos del Sitio que explican los antecedentes del Sitio, actividades, eventos e información técnica	Según sea necesario	En línea
Sitio web del Departamento de Salud del Estado	Compartir información sobre antecedentes del Sitio, actividades actuales en el Sitio, reuniones del CAG y eventos públicos	En curso y según sea necesario	En línea
Sitio web de la ciudad y el condado de Denver	Compartir información sobre antecedentes del Sitio, actividades actuales en el Sitio, reuniones del CAG y eventos públicos	En curso y según sea necesario	Sitio web de la ciudad y el condado de Denver
Medios de Comunicación	Publicar avisos relacionados con el Sitio y reuniones comunitarias en periódicos y estaciones de televisión	Según sea necesario	En forma impresa y en línea en Sitios web de noticias
Lista de Correo	Actualizar la lista de correo del Sitio utilizando listas de registro de reuniones anteriores, entrevistas con miembros de la comunidad y consultas por correo electrónico y por teléfono	Según sea necesario	En línea por correo electrónico y por teléfono
Repositorios de información sobre el Sitio	Almacenar copias impresas de documentos del Sitio	Según sea necesario	Biblioteca de la Sucursal Valdez-Perry

**APPENDIX**

## CONTACT LIST

### State Elected Officials

Governor Jared Polis  
200 East Colfax Avenue, Room 136  
Denver, CO 80203-1792  
Phone: 303-866-2471

Attorney General Phil Weiser  
Office of the Attorney General  
Ralph L. Carr Colorado Judicial Center  
1300 Broadway, 10th Floor  
Denver, CO 80203  
Phone: 720-508-6000

Colorado Legislature  
Colorado State Capitol  
200 East Colfax Avenue  
Denver, CO 80203

### Local Officials

#### City of Denver

Michael B. Hancock, Mayor  
City and County Building  
1437 Bannock Street, Room 350  
Denver, CO 80202  
Phone: 720-865-9000

Council District 9: Candi CdeBaca  
City and County Building  
1437 Bannock Street, Room 451  
Denver, CO 80202  
Phone: 720-337-7709  
Email: [district9@denvergov.org](mailto:district9@denvergov.org)

Council At-Large: Robin Kniech  
City and County Building  
1437 Bannock Street, Room 451  
Denver, CO 80202  
Phone: 720-337-7712  
Email: [kniechatlarge@denvergov.org](mailto:kniechatlarge@denvergov.org)

Council At-Large: Deborah "Debbie" Ortega  
City and County Building  
1437 Bannock Street, Room 451  
Denver, CO 80202  
Phone: 720-337-7713  
Email: [ortegaatlarge@denvergov.org](mailto:ortegaatlarge@denvergov.org)

## Federal, State and Local Agencies

### U.S. Environmental Protection Agency, Region 8

1595 Wynkoop Street  
Denver, CO 80202-1129  
Phone: 303-312-6312  
Español: 202-564-9924  
Toll-free (toll free Region 8 states only: CO, MT, ND, SD, UT, WY): 800-227-8917

Jesse Aviles-Silva, Remedial Project Manager  
Phone: 303-312-6287 **Hablo español**  
Email: [aviles.jesse@epa.gov](mailto:aviles.jesse@epa.gov)

Ryan Kloberdanz, Community Involvement  
Coordinator  
Phone: 303-312-6078  
Email: [kloberdanz.ryan@epa.gov](mailto:kloberdanz.ryan@epa.gov)

### Colorado Department of Public Health and Environment

4300 Cherry Creek Drive South  
Denver, CO 80222  
Phone: 303-692-2000  
Toll-free: 800-886-7689 (in-state)

Fonda Apostolopoulos, State Project Officer  
Phone: 303-692-3411  
Email: [fonda.apostolopoulos@state.co.us](mailto:fonda.apostolopoulos@state.co.us)

Jeannine Natterman, Public Involvement  
Coordinator  
Phone: 303-692-3303  
Email: [jeannine.natterman@state.co.us](mailto:jeannine.natterman@state.co.us)

### City and County of Denver Department of Environmental Health

200 West 14th Avenue, Department 310  
Denver, CO 80204  
Phone: 720-865-5452  
Email: [eqcomments@denvergov.org](mailto:eqcomments@denvergov.org)

Agatha Linger  
200 W 14th Ave  
Denver, Colorado 80204  
Phone: (720) 865-5356  
Email: [agatha.linger@denvergov.org](mailto:agatha.linger@denvergov.org)



## LIST OF ACRONYMS USED

CAG	Community Advisory Group
CDPHE	Colorado Department of Public Health and the Environment
CERCLA	Comprehensive Environmental Response, Compensation, and Liability Act
CIP	Community Involvement Plan
EPA	United States Environmental Protection Agency
IC	Institutional Control
NCP	National Oil and Hazardous Substances Pollution Contingency Plan
NPL	National Priorities List
OU	Operable Unit
OU1	Operable Unit 1
OU2	Operable Unit 2
OU3	Operable Unit 3
SARA	Superfund Amendment and Reauthorization Act of 1986
VB/I-70	Vasquez Boulevard and Interstate 70

## VASQUEZ BOULEVARD AND I-70 COMMUNITY INVOLVEMENT PLAN INTERVIEW

### QUESTIONS

1. What neighborhood do you live in and when did you move to the area?
2. Why are you interested in the VB/I-70 Superfund Site?
3. Are you aware of the former environmental issues at the VB/I-70 Site and the cleanup activities that have taken place to date?
4. Are you aware that EPA has proposed to delist the residential soils portion (Operable Unit 1) of the Site from the NPL?
5. Was your property sampled during investigations or the residential soil cleanup actions?
6. In your opinion, what were the effects of the residential soil cleanup on the community?
7. Do you think EPA did a good job explaining the risks during the cleanup?
8. Can you think of anything EPA could have done during the residential soil cleanup to better communicate the risks?
9. Have you ever received any communication from local, state or other federal agency officials about the cleanup, and/or restrictions (ICs) at the Site?
10. How do you learn about what's happening at the Site now?
11. What type of information do you feel that you need or want regarding the VB/I-70 Superfund Site?
12. Who would you contact if you have questions or concerns, or need information about the Site?
13. What is the best way to keep the community informed about activities at the VB/I-70 Superfund Site?
14. Where do you get local news information? Local television, radio stations, newspapers, the internet?
15. Do you currently have any concerns about potential risks from the Site?
16. Are you aware of any community concerns regarding the Site or its operation and administration?
17. Can you suggest other community members who would be interested in talking with us about the Site?
18. Is there anything else you would like to add?

## REFERENCE LIST

Community Involvement Plan. Vasquez Boulevard/Interstate-70 Superfund Site, Operable Unit 2. United States Environmental Protection Agency Region 8. January 2010.

Community Involvement Plan. Vasquez Boulevard/Interstate-70 Superfund Site. Prepared by the United States Environmental Protection Agency Region 8 and Summit Technical Resources, Inc. May 2005.

Elyria and Swansea Neighborhoods Plan. Denver Department of Environmental Health. February 2015. Denver, Colorado.

Globeville Elyria-Swansea: The Peoples' Survey. Prepared by Front Range Economic Strategy Center for the Globeville Elyria-Swansea Coalition Organizing for Health and Housing Justice. November 2017.

Globeville Neighborhood Assessment. Denver Department of Planning and Community Development. January 2008. Denver, Colorado.

How Neighborhood Planning Affects Health in Globeville and Elyria Swansea. Denver Department of Environmental Health. September 2014. Denver, Colorado.

National Western Center Master Plan. City and County of Denver, Colorado State University, Western Stock Show Association, Denver Museum of Nature & Science and History Colorado. March 2015.

U.S. Census Bureau (2016). 2012 to 2016 American Community Survey, Five-Year Estimate.