

2019

Colorado Smelter Community Involvement Plan Update



COMMUNITY INVOLVEMENT UPDATE CONTENTS

Introduction	3
The Community	3
Demographics	3
Community Issues and Concerns	4
Environmental Concerns	4
Communication	5
Outreach and Education	6
Changes Since the 2015 Community Involvement Plan	6
Community Involvement Action Plan	7
Community Advisory Group Recommendations	9
Resources	9
Conflict Prevention and Resolution Center (CPRC)	9
Technical Assistance Services for Communities (TASC) program	10
Superfund Job Training Initiative (SuperJTI)	10
Colorado Smelter Revitalization Project	11
Colorado Smelter Site Information	11
Site Background	11
Contacts	12
Information Repository	13
Frequently Used Handout Materials	14
Site Brochure (English)	14
Site Brochure (Spanish)	15
Study Area Map	16
Consent for Access	17
Community Involvement Plan Questionnaire (English)	17
Community Involvement Plan Questionnaire (Spanish)	19

INTRODUCTION

Under the federal Superfund program, the U.S. Environmental Protection Agency (EPA) is currently doing a complete environmental investigation and cleanup for the Colorado Smelter Superfund site. The 2019 Community Involvement Plan is an update to the earlier 2015 plan. The goals of community involvement plans are to lay out specific outreach activities that help address community concerns and to:

- Provide the Pueblo community with routine and understandable information about what we learn in our investigations;
- Encourage community interest and give the public the opportunity to share meaningful input into site cleanup activities; and
- Inform the public of the nature of environmental issues associated with the site.

To update this plan, EPA and the Colorado Department of Public Health and Environment (CDPHE) conducted a series of community interviews beginning in June and through the fall of 2018 with residents, community advisory group members, local government (including elected officials) and other stakeholders in the area. EPA recently added, as part of the Colorado Smelter Superfund site (the site) the rest of the Grove Neighborhood to the study area in 2018 and focused on interviews with residents of Grove. Earlier interviews, in 2015, were conducted primarily with Eilers and Bessemer residents.

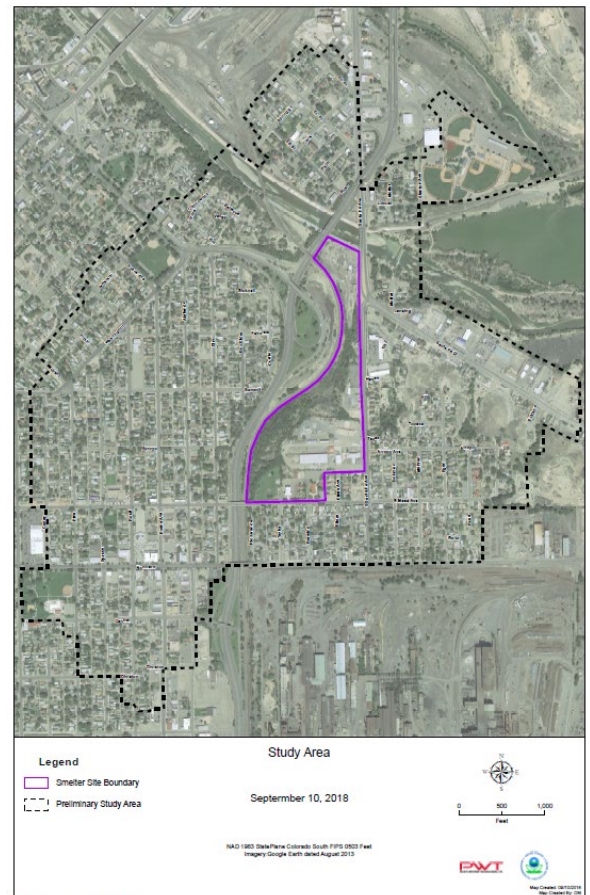


Figure above: September 2018 Study Area Map

THE COMMUNITY

DEMOGRAPHICS

The latest census data is from 2010 and has not changed since the first Community Involvement Plan in 2015. The 2013-2017 American Community Survey outlines the updated demographic estimates. Per the survey, 43 percent of the population self identifies as white, 52 percent as Hispanic or Latino and 2 percent as Black or African American. At less than 1 percent per group, American Indian/Alaskan Native, Asian, Native Hawaiian/Pacific Islander or some other race, make up the remaining population demographics. The survey did not provide updated data on the renters and homeowner breakdown and still is at 50 percent owner-occupied housing.

COMMUNITY ISSUES AND CONCERNS

The following section summarizes the interviews conducted with 20 participants.

ENVIRONMENTAL CONCERNS

Many people we spoke with have lived in Pueblo since childhood and have seen and/or been involved with the progression of the Superfund site work from the beginning.

During the listing, people were concerned about negative impacts to property values and this is still a concern. Now the concern for some is focused around being able to buy and sell their homes and several mentioned ongoing issues with real estate transactions. Some people, however, said they were seeing more homes go on the market and being sold without issue. Residents and local government officials suggested continuing education with the real estate community to enhance their understanding of the Superfund process and EPA lender liability policies that have been in place since 1997.

Residents and local government have an interest in what will happen site-wide with the slag pile (which is in OU2) and future use of both Operable Unit 1 (Community Properties) and Operable Unit 2 (Former Smelter Area). This includes questions about potential changes with future zoning, local codes and any related regulations. People expressed that there is a need to focus on health-related concerns and decisions, instead of determining the final site boundary. They also acknowledged that more participation (in sampling and cleanup) means quicker site deletion (or partial deletion) from the National Priorities List.

Several residents expressed concerns about the cleanup that included:

- the use of seed rather than sod;
- nice yards staying nice-looking after cleanups;
- good quality work and materials being very important to them;
- everyone being treated fairly;
- cleanups continuing at a steady pace; and
- cleanups improving throughout the process.

Other topics mentioned by a few residents included confusion about the sampling results letter, addressing dust in alleys and the results of the duct work study.

COMMUNICATION

Communication is an important part of community involvement. Interview questions about communication preferences help inform how the site team shares information and interacts with the community. The interviews also help us understand how residents want to communicate with us. The project is more successful when we have opportunities for two-way communication.

Over half of people interviewed cited email as the best way to receive site information. Less than a third mentioned articles in the Pueblo Chieftain, information from family and friends, television stations, social media, door-to-door outreach and flyers as other ways to receive information. Email, flyers/fact sheets, Community Advisory Group meetings and one-on-one discussions were the desired format to receive site information. Most people said monthly updates work well, in conjunction with occasional updates when there is new important information to share.

When asked about language needs, most people said they did not know anyone who spoke Spanish but that it was likely a need in the community. A few interviews were conducted solely in Spanish, and interviewees expressed appreciation at being able to interview in their primary language. Interviewees shared that Hispanic/Latino and Slavic Americans have lived in Pueblo for multiple generations and likely are either bilingual or primarily English-speaking. Both English and Spanish speakers acknowledged that there is a migrant population but did not have a good sense for language needs throughout the study area.

Community involvement coordinators also asked people about their experience communicating with site team members. Interviewees described overall communications with site team, including contractors, as positive, professional, pleasant and respectful and stated that the team seemed hard working and in-sync with one another.

Local officials expressed appreciation that the Regional Administrator, who at the time of these interviews, was Doug Benevento, made time to show up in the community and commit more funding to the site. Interviewees offered communication feedback and suggested that the site team be more concise, use more visual aids, use simpler language and less scientific terms, name a small set of primary site contacts and take time to not only show accountability but also publicly celebrate project achievements.



OUTREACH AND EDUCATION

Community involvement outreach and education takes many forms including, but not limited to, coordinating and attending public meetings and Community Advisory Group meetings, distributing site information, attending events and being available to answer resident questions.

When asked about Community Advisory Group meetings, people described the facilitator as doing a great job of keeping the meeting on track, keeping the peace and ensuring people are informed. Feedback to improve the meetings included wanting to see less bickering and complaining, less formality, which some believed kept quieter people from speaking up, recognition of Community Advisory Group contributions and a more child friendly environment (such as having activities). Overall, people were pleased with the location, frequency and timing of meetings.

Most people said that they would like to see site background summary and updates as topics in outreach material. A few people mentioned wanting to hear more about the environmental impact of site contaminants on public health, especially children, tips on things people can do to reduce their exposure to lead, and to not lose sight of the revitalization efforts now that cleanups are in progress. Overall, people shared that the amount and frequency of information they are receiving is good and that more information could be overwhelming.



CHANGES SINCE THE 2015 COMMUNITY INVOLVEMENT PLAN

Since the creation of the 2015 CIP, the following changes have occurred at the site:

- 2016 and 2017 – EPA conducted 34 emergency indoor cleanups. The contaminant levels found during the emergency cleanups prompted EPA to begin the process for residential soil and indoor dust cleanups sooner.
- September 2017 – EPA issued an early action interim Record of Decision.
- Early 2018 – EPA began initial cleanups using a short-term contractor.
- July 2018 – Former Regional Administrator, Doug Benevento, announced accelerated funding for residential cleanups.
- Summer and Fall 2018 – EPA secures long-term contractors and conducts cleanup planning.
- Early 2019 – EPA resumes cleanups under the long-term contractor.
- March 2019 – EPA began pilot sampling on Operable Unit 2, Former Smelter Area.



COMMUNITY INVOLVEMENT ACTION PLAN

People expressed overall satisfaction with site team communications and the level of information they are receiving; therefore, the action plan follows current outreach practices to inform site communications.

Overall, we heard that people want to see information communicated in simple, non-technical terms and receive routine site updates and health information.

Activity	Description of activity	When	How
Community Advisory Group meetings	Regular meetings with affected residents to share site updates, clarify questions and seek community input.	Monthly	Face-to-face Via meeting
Community Advisory Group planning committee calls	Monthly conference calls with the Community Advisory Group planning committee to plan agenda items and key community concerns.	Monthly	Via phone
Local official updates	To share regular site updates and inform local officials about community concerns.	Quarterly	Face-to-face Via meeting
Regular site updates	To keep residents, local officials and community informed about monthly progress. May include metrics, data results, site report outs or upcoming site activities.	Monthly	Handout Via email Via Community Advisory Group meetings
Periodic site updates	Site update on major changes or a site refresher in a format other than email. May be a post card mailer, information in the paper and so forth.	1 to 2 times a year	Via mail Via newspaper
Availability sessions	Set office drop-in hours for residents to ask property specific questions or other site questions.	Monthly	Face-to-face Local office
EPA website	Site background, site activities, event information. Includes technical documents and any documents guiding site activities.	As needed	Online

Activity	Description of activity	When	How
Facebook/Twitter	Community Advisory Group meeting invitations. Sharing of stories or new information.	As needed	Social media
State health department website	Includes site handouts, meeting notes and major site documents or announcements.	Monthly	Online
Information repository	Major site documents in print and supporting documents are in CD.	As needed	Pueblo Main Library
Door-to-door	Site team outreach to target areas needing more sampling or to help fill gaps for cleanups. May also be to distribute site updates.	As needed	Face-to-Face
Local events	Find local events to share site outreach. Examples of past events include Bessemer nights, Trunk-or-treat and health fair.	1 to 2 times a year	Face-to-face
Superfund site education	Presentations to local groups to educate about the Superfund site activities. Target real estate and lending community.	1 to 2 times a year	Face-to-face
Public meetings	When site changes or decision need to be communicated to broader public. Typically, will include an advertisement in the local paper.	As needed	Face-to-face meeting Public meeting
Brochures/flyers	Educational tool to share site information or events.	As needed	Outreach events or materials Community Advisory Group handout Via email
Revising site information	Revisions to site information that helps the public understand technical information and the superfund process. For example, revisions to the results packages, based on community feedback.	As needed	As needed

COMMUNITY ADVISORY GROUP RECOMMENDATIONS

The Colorado Smelter Community Advisory Group officially formed on September 9, 2014. This group is an independent, non-partisan group consisting of a balance of diverse interests affected by and concerned about the site and the cleanup process. Members include residents, non-residents, as well as city and county representatives.

The CAG offered some recommendations for improving communication and attendance at community information sessions and these recommendations are considered here. These include adding more locations and family friendly events to encourage interest. Methods of expanding communication include using more broadcast and print media and “boosting” on Facebook. There was a concern that more residents need to be recruited for the CAG membership to help balance out the number of Agency representatives.

RESOURCES

The Superfund program has many tools to aid in site communication, as well as respond to community needs or concerns. The Community Advisory Group received the programs listed below. Facilitation, technical services and the revitalization efforts are ongoing.

CONFLICT PREVENTION AND RESOLUTION CENTER (CPRC)

EPA’s primary resource for services and experience in alternative dispute resolution, environmental conflict resolution, consensus-building, and collaborative problem solving.

Colorado Smelter has a neutral facilitator to aid in site communications. Site facilitation activities include:

- Facilitating monthly Community Advisory Group meetings or public meetings
- Coordinating agenda topics between Community Advisory Group members and agencies
- Sharing meeting notes and materials

Recent Community Advisory Group monthly meeting minutes are on the State Health Department’s website at: <https://www.colorado.gov/cdphe/cosmelt>

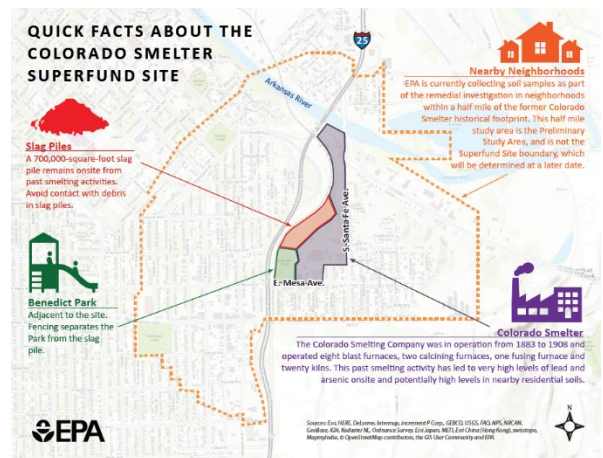
TECHNICAL ASSISTANCE SERVICES FOR COMMUNITIES (TASC) PROGRAM

Provides independent assistance through an EPA contract to help communities better understand the science, regulations and policies of environmental issues and EPA actions.

The Colorado Smelter Superfund site has been receiving TASC aid in the form of a community technical advisor since 2015.

Deliverables include:

- Door knocker – Includes images of ways to prevent lead exposure, as well as meeting information
- Site overview flyer – Health information and quick facts about the site
- Duct work pilot project presentation and handout summary
- Understanding sampling results presentation and handout
- Air monitoring summary presentation
- Helping answer questions or interpreting technical information into plain language



SUPERFUND JOB TRAINING INITIATIVE (SUPERJTI)

The Superfund Job Training Initiative program (SuperJTI) is a national job readiness program that provides unemployed and underemployed individuals with the technical skills and specialized training needed to work on cleanup projects at Superfund sites, on other environmental cleanup projects, and on a broad range of construction projects.

EPA, in coordination with NeighborWorks of Southern Colorado, conducted and completed SuperJTI in 2018. There were 15 graduates of the program. Each Pueblo graduate earned certificates in:

- Occupational Safety Health Administration 10-hour construction card
- CPR (cardiopulmonary resuscitation) and First Aid
- 40-hour Hazardous Waste Operations and Emergency Response



As of April 2019, EPA contractors employed five SuperJTI graduates to work on the project. Our community partner reports that many of the remaining graduates found employment in the Pueblo area.

COLORADO SMELTER REVITALIZATION PROJECT

EPA's Superfund Redevelopment Initiative is a part of the Colorado Smelter site. The Superfund Redevelopment Initiative has used assessment tools to collect and assess information that help us understand the anticipated future land use(s) that might be reasonable for an area.

Through the Superfund Redevelopment Initiative, representatives from local, state and federal government agencies and local organizations came together to create the Colorado Smelter Revitalization Project. The Colorado Smelter Revitalization Project is a locally-driven collaborative effort that aims to improve commercial areas and neighborhoods within and around the Colorado Smelter study area.

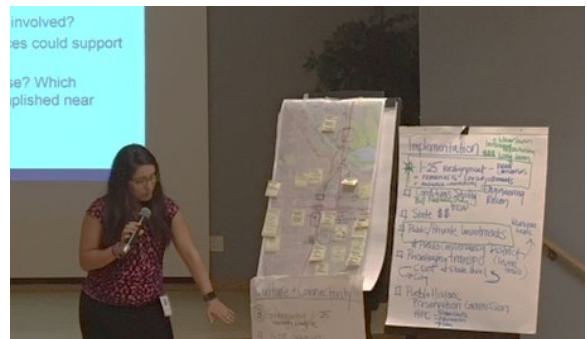
On October 30, 2018, the group conducted a visioning event that built upon existing knowledge and efforts, including the 2016 community-led visioning session and ongoing work at the Colorado Smelter Superfund site.

This visioning will help inform, among other things, the Bessemer and Eilers area neighborhood plan update. Ideas that result from the visioning event will help inform the local land use planning process that is under the city and county authority. The information can also be used to aid with various revitalization efforts in the greater site area.

Focus areas for the 2018 visioning session were:

- Safe and stable neighborhoods
- Vibrant commercial and redevelopment
- Connectivity and cultural identity

The CRSP effort is continuing through community led efforts. The Bessemer, Eilers & Grove Improvement Network (BEGIN) is among one of the local groups carrying community revitalization efforts into the next phase of the project.



COLORADO SMELTER SITE INFORMATION

SITE BACKGROUND

The Colorado Smelter was a silver and lead smelter that ran in the Eilers and Bessemer neighborhoods from 1883 to 1908. EPA listed the site on the National Priorities List in December 2014, due to its concern about high levels of arsenic and lead (metals) that had been found in smelter slag and neighborhood soils.



Pueblo was once home to five ore smelters and is still home to one active steel mill. The Colorado Smelter historical footprint encompasses Santa Fe Avenue to the east, Mesa Avenue to the south, Interstate 25 to the west, and the Arkansas River to the north. The Bessemer, Eilers and Grove neighborhoods are closest to the former Colorado Smelter site, which now consists of building remains and about 700,000-square-foot slag (waste) pile.

The potential for contamination at the Colorado Smelter site was discovered during an earlier inspection of the Santa Fe Bridge Culvert site, which began a series of investigations in the early 1990s and continues today. In 2010, CDPHE conducted a focused site inspection of properties surrounding the Colorado Smelter; this study determined the presence of elevated lead and arsenic levels. These levels pose a threat to current and future residents.

Continued and future sampling, through the Superfund Remedial Investigation/Feasibility process will help determine the type and scope of cleanup activities.

There are about 1,700 residential properties in the study area, which covers a half-mile radius (mile-wide) from the smokestack of the former smelter. Ninety-five percent of the homes are pre-1978 (before the lead paint ban). Many are single-family detached homes, with bare-soil yards.

Currently, Operable Unit 1 (Community Properties) is in the Remedial Investigation/Feasibility study and Remedial Design/Remedial Action phase of the project. At Operable Unit 2 (OU2 – the Former Smelter Area), EPA is in the early stages of Remedial Investigation/Feasibility data collection phase of the cleanup process.

For more information about the site please visit:

<https://www.epa.gov/superfund/colorado-smelter>

CONTACTS

COLORADO SMELTER OFFICE AND PHONE NUMBER

125 East Abriendo Ave., 719-299-4468

SITE INFORMATION AND WEBSITES

U.S. Environmental Protection Agency, Colorado Smelter website

<https://www.epa.gov/superfund/colorado-smelter>

Colorado Department of Public Health and Environmental website

<https://www.colorado.gov/cdphe/cosmelt>

2019 Community Involvement Plan Update

Pueblo Department of Public Health and Environmental website

<http://county.pueblo.org/government/county/departments/city-county-health-department/colorado-smelter>

EPA REGION 8

Sabrina Forrest, Lead Remedial Project Manager (RPM) 303-312-6484

Jamie Miller, OU1 RPM, 303-312-6519

Jesse Aviles-Silva, OU2 RPM, 303-312-6287

Mike Cirian, RPM/Construction Advisor, 406-293-6194

Jennifer Harrison, Community Involvement Coordinator, 303-312-6813

Fran Costanzi, Superfund Redevelopment Initiative Coordinator, 303-312-6571

Jennifer Harrison, Superfund Redevelopment Community Liaison, 303-312-6813

COLORADO DEPARTMENT OF PUBLIC HEALTH & ENVIRONMENT

Rachel Blomberg, Interim Project Manager, 303-691-4024

Jeannine Natterman, Public Information Officer, 303-692-3303

PUEBLO DEPARTMENT OF PUBLIC HEALTH & ENVIRONMENT

Aaron Martinez, Program Manager, 719-583-4341

US ARMY CORPS OF ENGINEERS

Julie Babcock, Project Manager, 402-995-2245

Chuck Leinen, Site Quality Assurance Representative, 402-659-7477

COMMUNITY RESOURCES

Bessemer, Eilers, & Grove Improvement Network (BEGIN) Welcome Packet

<https://nwsoco.org/what-we-do/ced/community-initiatives/begin.html>

INFORMATION REPOSITORY

EPA set up a space for the public to view records related to Superfund work. The space can be found at:

Pueblo City County Library, Rawlings Branch
100 East Abriendo Ave.
Pueblo, CO 81004
719-562-5600

FREQUENTLY USED HANDOUT MATERIALS

The following section shares some of the often-used outreach materials. For more materials and resources please visit our site web pages.

U.S. Environmental Protection Agency, Colorado Smelter website:

<https://www.epa.gov/superfund/colorado-smelter>

Colorado Department of Public Health and Environmental website:

<https://www.colorado.gov/cdphe/cosmelt>

Pueblo Department of Public Health and Environmental website:

<http://county.pueblo.org/government/county/departments/city-county-health-department/colorado-smelter>

SITE BROCHURE (ENGLISH)

TO ASK QUESTIONS ABOUT...

Cleanup, call 719-299-4468

- Cleanups are in progress until about 2022.
- A property coordinator will reach out when it gets closer to cleaning your property.
- Continue to maintain your yard. Grass, mulch and rock act as a natural barrier to contamination.
- EPA will only replace grass if grass existed.

Sampling

Call Travis Austin (PWT) at 303-482-6970 to:

- Verify if you're in study area
- Schedule outdoor soil & indoor dust sampling

Lead Resources & Testing

Call Pueblo Department of Public Health and Environment at 719-583-4307

- Lead program
- Blood lead testing
- Healthy home screenings

GET INVOLVED

Community Advisory Group

- Discuss site documents and activities
- Provide advice to improve cleanup
- Meets on 2nd Tuesday of the month from 5:30 p.m. to 7:30 p.m.

QUICK FACTS ABOUT THE SITE

Colorado Smelting Company

- Operated from 1883 to 1908
- Deposited lead and arsenic in nearby neighborhoods

Community Properties

- Ellers, Bessemer and Grove neighborhoods
- About 1,700 properties (about 1,900 including commercial)
- Study area 1/2-mile radius (1 mile wide)

Slag Piles

- 700,000-square-foot slag pile remains onsite from past smelting activities.
- Avoid contact with debris in slag piles.

Site-Specific Cleanup Levels*

Arsenic in soil:	61 ppm
Lead in soil:	350 ppm
Arsenic in indoor dust:	61 ppm
Lead in indoor dust:	275 ppm

*in parts per million (ppm)

The homes where average results above these site-specific cleanup levels would likely need a cleanup.

COLORADO SMELTER SUPERFUND SITE

Legend: Study Area, Lead in Soil, Arsenic in Soil, Lead in Dust, Arsenic in Dust

December 12, 2018

*Colorado Smelter study area inside dotted line

EPA, COLORADO, Pueblo Department of Public Health & Environment, U.S. Army Corps of Engineers

HEALTHY HOME BEST PRACTICES

Regularly wash...

- Hands
- Toys, bottles, pacifiers
- Fruits & vegetables
- Dishes
- Garden tools outside

Control dust with wet cleaning...

- Wet mop floors
- Wet wipe surfaces & window sills

Avoid tracking dirt inside the home...

- Use doormats
- Remove and clean shoes outside
- Remove and keep gardening items outside

Maintain your home...

- Keep paint in good condition
- Do not try to remove paint yourself
- Replace filters regularly
- Hire certified contractors

Lead Impacts in Children

- Developmental delays
- Learning difficulties
- Behavior problems
- Increased risk of

Lead Impacts in Adults

- Increased risk of
- High blood pressure
- Reproductive problems

Lead in pregnant women, lead exposure can cause miscarriage, reduced fetus growth and premature birth. Lead can be transmitted through breast milk.

In adults, lead exposure can cause nervous system effects, cardiovascular effects, increased blood pressure and incidence of hypertension, decreased kidney function and reproductive problems.

Fight Lead Poisoning with a Healthy Diet

Eat healthy foods that are:

- Low in fat
- High in iron, calcium, and vitamin C

Learn more at our Colorado Smelter websites:

- EPA: <https://www.epa.gov/superfund/colorado-smelter>
- State Health Department: <https://www.colorado.gov/cdphe/cosmelt>
- Pueblo Health Department: <http://county.pueblo.org/government/county/departments/city-county-health-department/colorado-smelter>

Community Involvement Coordinators:

U.S. EPA: V. Jasmin Guerra, 800-227-8917 ext. 312-6508 or guerra.valeria@epa.gov

CDPHE: Jeannine Natterman, 888-569-1831 ext. 3303 or jeannine.natterman@state.co.us

SITE BROCHURE (SPANISH)

PARA HACER PREGUNTAS SOBRE ...

La limpieza, lláma al 719-299-4468

- Las limpiezas continuarán aproximadamente 2022.
- Un coordinador de propiedades se comunicará con usted cuando se acerque el momento de la limpieza de su propiedad.
- Siga manteniendo su patio. La hierba, el mantillo y las rocas actúan como una barrera natural contra la contaminación.
- La EPA solo reemplazará la hierba en caso de que exista.

Muestreo
Llame a Travis Austin (PWT) al 303-482-6970 para:

- Verificar si usted se encuentra en el área de estudio.
- Programar el muestreo de suelo al aire libre y de polvo en interiores.

Pruebas y recursos de plomo
Llame al Departamento de Salud Pública y Medio Ambiente de Pueblo al 719-563-4307

- Programa sobre el plomo.
- Pruebas de detección de plomo en la sangre.
- Evaluaciones sanitarias de la casa.

DATOS BREVES

La empresa de fundición de Colorado (The Colorado Smelting Company)

- Funcionó desde 1883 hasta 1908
- Deposito plomo y arsénico en vecindarios cercanos

Propiedades de la comunidad

- Vecindarios de Eilers, Bessemer y Grove
- Alrededor de 1,700 propiedades (alrededor de 1,900 propiedades, incluidas las comerciales)
- Radio de 1/4 milla del área de estudio (1 milla de ancho)

Pilas de escoria

- Una pila de escoria de 700,000 ft³ proveniente de actividades de fundición anteriores permanece en el lugar.
- Evite el contacto con los escombros en las pilas de escoria.

EL SITIO SUPERFUNDO FUNDICIÓN COLORADO

Niveles de limpieza específicos del sitio

Arsénico en el suelo:	61 ppm
Plomo en el suelo:	350 ppm
Arsénico en polvo de interiores:	61 ppm
Plomo en polvo de interiores:	275 ppm

*en partes por millón (ppm)

Los hogares donde el promedio de resultados por encima de estos niveles de limpieza específicos del sitio probablemente necesitarían una limpieza.

Participe

Grupo Asesor de la Comunidad

- Analice las actividades y los documentos del sitio.
- Brinde asesoramiento para mejorar la limpieza.
- Las reuniones son el 2º martes del mes de 5:30 p. m. a 7:30 p. m.

MEJORES PRÁCTICAS PARA UN HOGAR SALUDABLE

Lave periódicamente...

- Manos
- Juguetes, libros, chupetes
- Frutas y verduras
- Muebles
- Herramientas para el jardín

Controle el polvo con una limpieza húmeda...

- Humedezca los trapeadores de piso
- Humedezca las superficies de pulido, de limpieza y los alféizanos de las ventanas

Evite acarrear suciedad al interior

- Utilice traperos
- Quite y limpie los zapatos fuera de la casa
- Retire y guarde los artículos de jardín fuera de la casa

Mantenga su casa en buenas condiciones...

- Conserve la pintura en buenas condiciones
- No intente quitar la pintura usted mismo
- Cambie los filtros periódicamente
- Busque certificaciones

Plomo en las mujeres embarazadas: la exposición al plomo puede causar aborto natural, crecimiento reducido del feto y nacimiento prematuro. El plomo puede transmitirse a través de la leche materna.

En los adultos, la exposición al plomo puede producir efectos en el sistema nervioso, consecuencias cardiovasculares, aumento de la presión arterial e incidencia de hipertensión, disminución de la función renal y problemas reproductivos.

Combata el envenenamiento por plomo con una dieta saludable

Consuma alimentos saludables que tengan:

- Bajo contenido de grasa
- Alto contenido de hierro, calcio y vitamina C

Obtenga más información en nuestros sitios web de Fundición Colorado:

EPA
<https://www.epa.gov/superfund/colorado-smelter>

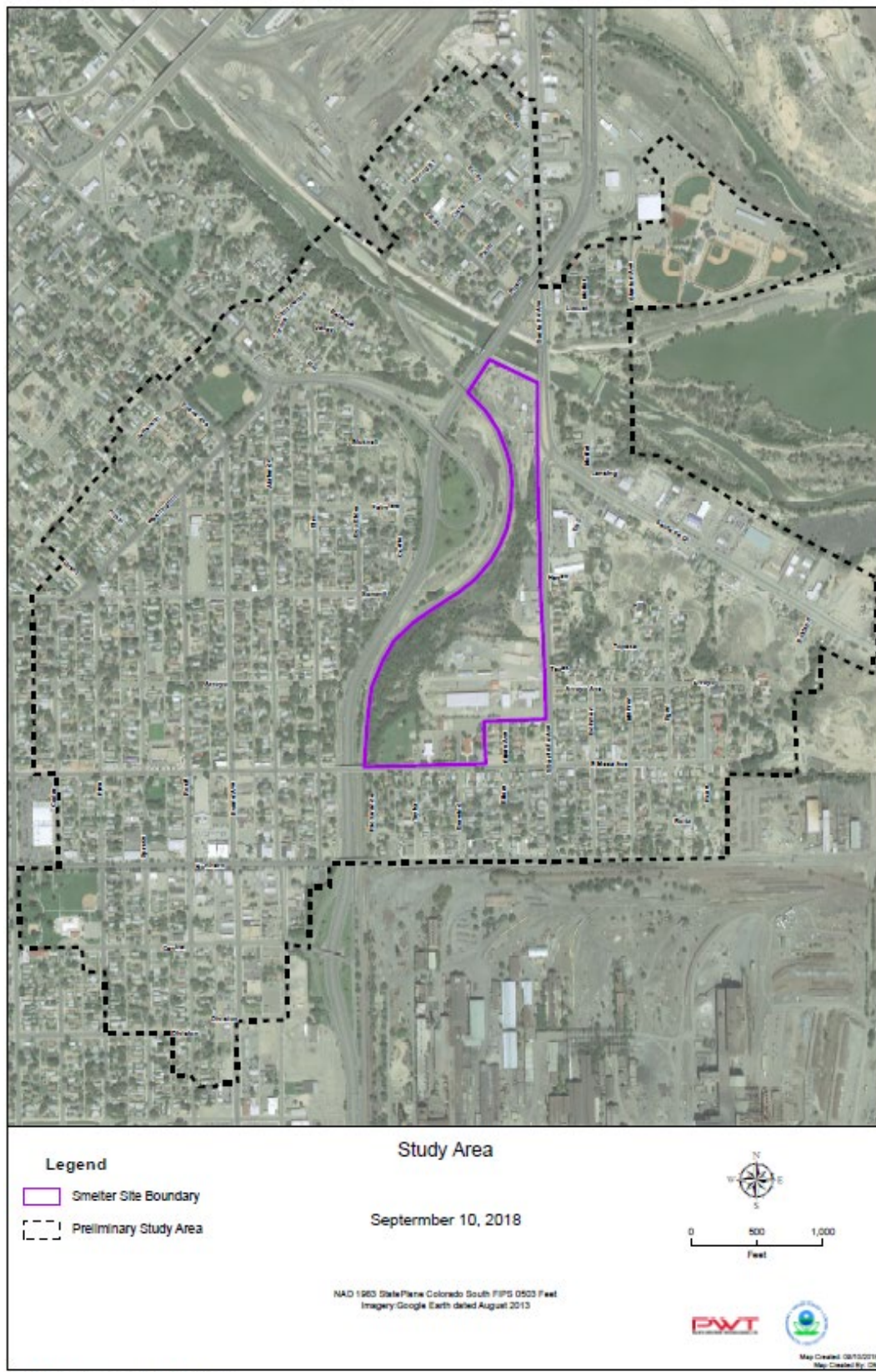
Departamento de Salud del Estado
<https://www.colorado.gov/pacific/cdph/cosmelt>

Departamento de Salud de Pueblo
<http://pueblo.org/health/department/cosmelt/>

Coordinadoras de participación comunitaria:
EPA de EE. UU.: V. Jasmin Guerra, 800-227-8917 ext. 313-4508 or guerra.valeria@epa.gov


Departamento de Salud Pública y Medio Ambiente de Colorado (CDPHE): Jeannine Natterman, 888-569-1831 ext. 3303 o jeannine.natterman@state.co.us

STUDY AREA MAP



CONSENT FOR ACCESS

Now available with e-signature capability. You may contact the agency staff for questions on how to fill out the form.

 **UNITED STATES ENVIRONMENTAL PROTECTION AGENCY**
REGION 8
1595 Wynkoop Street
Denver, CO 80202-1129
Phone 800-227-8917
www.epa.gov/region8

CONSENT FOR ACCESS

Name: Phone Number(s)
Property Address:
Mailing Address: Home:
 Work:
 Cell:

Relationship to Property (please select one): ☐ Owner ☐ Tenant/Renter

If you are the home owner, please supply the name, mailing address, phone number and/or email address of the tenant/renter.

The U.S. Environmental Protection Agency (EPA) has requested access to my property pursuant to its responsibilities under the Comprehensive Environmental Response, Compensation and Liability Act (CERCLA), 42 U.S.C. § 9601 *et seq.*, as amended, commonly known as Superfund, which gives the EPA the authority to respond directly to releases or threatened releases of hazardous substances that may endanger public health or the environment.

ACCESS FOR SOIL SAMPLING IN MY YARD


☐ I hereby give my consent to the U.S. Environmental Protection Agency (EPA) staff and authorized representatives to enter and have continued access to the property described above, at reasonable times, to take soil samples in my yard, including surface soils (typically within 0 to 2 inches of the surface) and subsurface soils (typically 2 to 18 inches below ground).

ACCESS FOR DUST SAMPLING INSIDE MY HOME

☐ I hereby give my consent to the U.S. Environmental Protection Agency (EPA) staff and authorized representatives to enter and have access to the property described above, by appointment, to take dust samples in my home by vacuuming the indoor living area and attic.

Date: Signature:

Rev 9/5/2018 Colorado Smelter Superfund Site

 **UNITED STATES ENVIRONMENTAL PROTECTION AGENCY**
REGION 8
1595 Wynkoop Street
Denver, CO 80202-1129
Phone 800-227-8917
www.epa.gov/region8

CONSENTIMIENTO PARA ACCESO A LA PROPIEDAD

Nombre: Números telefónicos
Dirección de la propiedad: Casa:
Dirección postal: Trabajo:
 Móvil/Celular:

Su relación con la propiedad (seleccione uno): ☐ Dueño ☐ Inquilino/Residente

Si usted es inquilino de la propiedad, por favor proporcione el nombre, dirección postal, número de teléfono o dirección de correo electrónico del dueño de la propiedad. (Se requerirá también el permiso del dueño de la propiedad.)

La Agencia de Protección Ambiental de los E.E.U.U. (EPA) ha solicitado acceso a la propiedad arriba descrita conforme a su responsabilidad bajo la Ley Comprehensiva de Responsabilidad, Compensación y Respuesta Ambiental (CERCLA), U.S.C. 42 § 9601 y siguientes, con sus modificaciones, comúnmente conocida como Superfund en inglés, la cual da a la EPA la autoridad para responder directamente a la emisión o liberación, o la amenaza de emisión o liberación de sustancias peligrosas que puedan poner en peligro la salud pública o al medioambiente.

ACCESO PARA MUESTREO DE SUELO (LA TIERRA) EN MI PATIO ("YARDA")

☐ Por la presente doy mi consentimiento al personal de la EPA y sus representantes autorizados, para entrar y tener acceso continuo a la propiedad descrita arriba, durante un tiempo razonable, para tomar muestras del suelo (la tierra) en mi patio (yarda), incluyendo suelo de superficie (típicamente de 0 a 2 pulgadas de la superficie) y subsuelos (típicamente de 2 a 18 pulgadas bajo la superficie).

ACCESO PARA MUESTRAS DE POLVO DENTRO DE MI CASA
(Nota: No es requerido tomar muestras de polvo, pero es muy recomendado)

☐ Por la presente doy mi consentimiento al personal de la EPA y sus representantes autorizados para entrar y tener acceso continuo a la propiedad descrita arriba, por cita, para tomar muestras de polvo en mi casa usando una aspiradora en la sala, otras áreas interiores y en el ático o desván.

Fecha: Firma:

Rev 9/4/2018 Sitio Superfondo fundición Colorado (Colorado Smelter Superfund Site)

COMMUNITY INVOLVEMENT PLAN QUESTIONNAIRE (ENGLISH)

We are visiting with you today to get your opinion on the best way for the agencies working on the Colorado Smelter Superfund site to communicate information to the Pueblo community, and the best way for the community to communicate with us.

We are interested in your opinion and would like you to be as candid as possible. Your responses will be grouped with all the other responses and will not be attributed to you.

A summary of all the responses will go into the Community Involvement Plan update.

If at any time you have questions for us, please feel free to ask.

ENVIRONMENTAL CONCERNS

- What do you know about the Colorado Smelter Superfund study area?

2019 Community Involvement Plan Update

- Do you have any concerns about the cleanup work taking place at the study area? The study area includes the Eilers, Grove and portions of the Bessemer neighborhoods.
- If you have concerns about the site, what are they?

COMMUNICATION PREFERENCES

- How would you like to receive site information?
- (Examples - By mail; By e-mail; In person, such as door-to-door; In groups, such as community or public meetings; website; social media – Which platforms? Newspaper articles – which papers? Radio – which stations? TV – which stations? From community members, family, friends – word-of-mouth? Public meetings held by EPA, state health department or local health department? Public meetings held by other local organization?
- What format or setting would you like to receive information?
(Examples: fact sheets; flyers; post cards; technical documents; written questions and answers; PowerPoints; one-on-one discussions; group discussions; listening or watching interviews; information sessions; interactive activities or workshop)
- How often would you like to receive site information?
- Do you know of people living in the study area who need site update information in a language other than English? If so, what language(s)?
- Where do you prefer to go for news about current issues?
- (Examples: newspapers/online papers? i.e., *Denver Post*, *Pueblo Chieftain*; TV stations? i.e., channels 5 and 30, KCSJ; radio stations; social media platforms? i.e., Twitter, Facebook or Snapchat, Nextdoor; friends and neighbors?; community groups?; other?)
- How would you describe your experience communicating with site team members? The site team is currently made up of EPA, the state health department, PDPHE, USACE and our contractors.
- Do you have any suggestions on how we can improve communication?

MEETINGS

Public meetings are important to the Superfund process. The following asks a series of questions about these meetings:

- We currently hold the Community Advisory Group meetings at Neighborworks. How convenient is this location?
- Do you have any recommendations for other meeting locations?
- Our current meeting time is the second Tuesday of every month in the evening – is that a good time for you and/or most people?
- How often do you think community meetings should be held to have detailed conversations about site activities?
- What style of meeting do you prefer? (classroom style, open house or meeting with discussion)

2019 Community Involvement Plan Update

OUTREACH AND EDUCATION

- What kind of site information would you like to receive?
- (Examples – Environmental such as education on lead and arsenic; public health such as what lead and arsenic do to a person's health; site updates such as cleanup or sampling progress; community led efforts such as activities the Community Advisory Group is working on or community vitalization efforts)

There is a Community Advisory Group that was formed by your neighbors about three years ago that meets regularly to talk about what's going on at the Colorado Smelter site.

- If you have been to one of these meetings what was that like for you?
- What would make it easy for you to attend or be a Community Advisory Group member, if not already?

Wrap-Up Questions

- Who else do you think we should talk to?
- Is there anything else you would like to share with us?
- Would you like to be added to our notification list to get updates about this site? For example, when the draft Community Involvement Plan is ready for community review or Community Advisory Group meetings.

COMMUNITY INVOLVEMENT PLAN QUESTIONNAIRE (SPANISH)

Hoy lo visitamos para preguntarle cuál considera que es la mejor manera para que las agencias que trabajan en El Sitio Superfundo Fundición Colorado comuniquen información a la comunidad de Pueblo, y la mejor manera para que la comunidad se comuniquen con nosotros.

Nos importa su opinión, y le pedimos que sea lo más sincero posible. Sus respuestas se agruparán con todas las otras respuestas y no se le atribuirán a usted.

Se volcará un resumen de todas las respuestas al Informe de Actualización sobre el Plan de Participación Comunitaria.

Si en algún momento quiere hacernos una pregunta, no dude en consultarnos.

PREOCUPACIONES AMBIENTALES

- ¿Qué sabe acerca del área de estudio del sitio de Superfund Colorado Smelter?
- ¿Tiene alguna preocupación acerca del trabajo de limpieza que se está llevando a cabo en el área de estudio? El área de estudio incluye los vecindarios de Eilers, Grove y algunas zonas de Bessemer.
- Si tiene preocupaciones acerca del sitio, ¿cuáles son?

PREFERENCIAS EN CUANTO A LA COMUNICACIÓN

- ¿Cómo desearía recibir información sobre el sitio?
- (Ejemplos: Por correo postal; por correo electrónico; en persona, por ejemplo, puerta a puerta; en grupos, por ejemplo, en una comunidad o en reuniones públicas; sitio web; redes sociales – ¿qué plataformas?; artículos de periódicos – ¿qué periódicos?; radio – ¿qué estaciones de radio?; televisión – ¿qué canales de televisión?; a través de miembros de la comunidad; familiares, amigos – “de boca en boca”; reuniones públicas realizadas por la EPA, el Departamento de Salud del Estado o Departamentos de Salud locales; reuniones públicas realizadas por otras organizaciones locales)
- ¿En qué formato o configuración desearía recibir información?
(Ejemplos: hojas informativas; folletos publicitarios; tarjetas postales; documentos técnicos; preguntas y respuestas por escrito; documentos en PowerPoint; conversaciones individuales; conversaciones/debates grupales; audios o videos de entrevistas; sesiones informativas; actividades interactivas o talleres)
- ¿Con qué frecuencia desearía recibir información sobre el sitio?
- ¿Conoce a personas que vivan en el área de estudio que necesiten información actualizada del sitio en un idioma que no sea inglés? Si es así, ¿en qué idioma(s)?
- ¿A través de qué medio prefiere enterarse de noticias sobre temas actuales?
- (Ejemplos: ¿Periódicos/periódicos en línea? Por ejemplo, *Denver Post*, *Pueblo Chieftain*; ¿Canales de televisión? Por ejemplo, los canales 5 y 30, KCSJ; Estaciones de radio; ¿Plataformas de redes sociales? Por ejemplo, Twitter, Facebook o snapchat, Nextdoor; ¿Amigos y vecinos?; ¿Grupos de la comunidad?; ¿A través de otros medios?)
- ¿Cómo describiría su experiencia de comunicarse con los miembros del equipo del sitio? Actualmente, el equipo del sitio está integrado por la Agencia de Protección Ambiental (EPA), el Departamento de Salud del Estado, el Departamento de Salud Pública y Medio Ambiente de Pueblo (PDPHE), el Cuerpo de Ingenieros del Ejército de EE. UU. (USACE) y nuestros contratistas.
- ¿Tiene alguna sugerencia sobre cómo podemos mejorar la comunicación?

REUNIONES

Las reuniones públicas son importantes para el proceso de Superfund. A continuación incluimos una serie de preguntas sobre estas reuniones:

- Actualmente, realizamos la reunión del Grupo Asesor de la Comunidad en Neighborworks. ¿Qué tan conveniente le resulta esta ubicación?
- ¿Puede sugerirnos algún otro lugar de reunión?
- Actualmente estas reuniones se realizan el segundo martes de cada mes, al atardecer. ¿Es un horario adecuado para usted o para la mayoría de las personas?
- ¿Con qué frecuencia le parece que deberían realizarse las reuniones de la comunidad para mantener conversaciones detalladas sobre las actividades del sitio?

2019 Community Involvement Plan Update

- ¿Qué tipo de reuniones prefiere? (en un aula, abiertas al público o reuniones con debate)

INFORMACIÓN Y DIFUSIÓN

- ¿Qué tipo de información del sitio le gustaría recibir?
- (Ejemplos - Ambiental: por ejemplo, información sobre el plomo y el arsénico; Salud pública: por ejemplo, los efectos del plomo y el arsénico sobre la salud de las personas; Actualizaciones sobre el sitio: por ejemplo, el progreso de las tareas de limpieza o muestreo; Iniciativas comunitarias: por ejemplo, actividades que esté planeando el Grupo Asesor de la Comunidad (Community Advisory Group) o iniciativas de vitalización de la comunidad)

Existe un Grupo Asesor de la Comunidad que formaron sus vecinos hace unos tres años, el cual se reúne periódicamente para conversar sobre lo que ocurre en el sitio Colorado Smelter.

- Si asistió a alguna de estas reuniones, ¿qué le pareció?
- ¿Qué le haría más fácil poder asistir a las reuniones del Community Advisory Group o convertirse en uno de sus miembros, si es que aún no lo ha hecho?

PREGUNTAS A MODO DE CONCLUSIÓN

- ¿Con qué otra persona cree que deberíamos hablar?
- ¿Hay alguna otra cosa que quiera comentarnos?
- ¿Desea que lo agreguemos a nuestra Lista de notificación para recibir informes de actualización sobre este sitio? Por ejemplo, los informes le indicarán cuando el Plan de Participación Comunitaria (CIP) esté listo para que lo revise la comunidad o la fecha, el horario y el temario de las reuniones del Community Advisory Group.