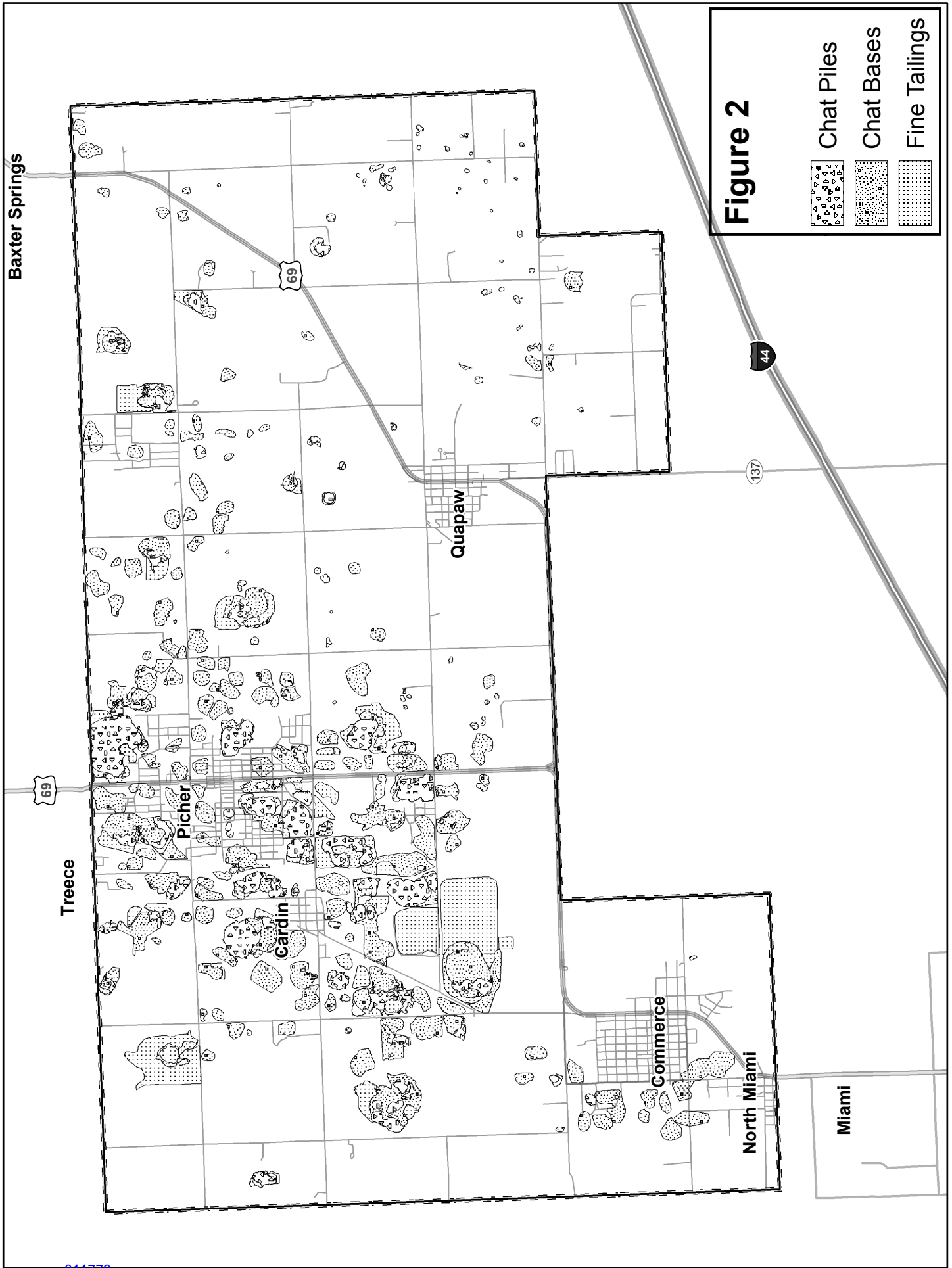
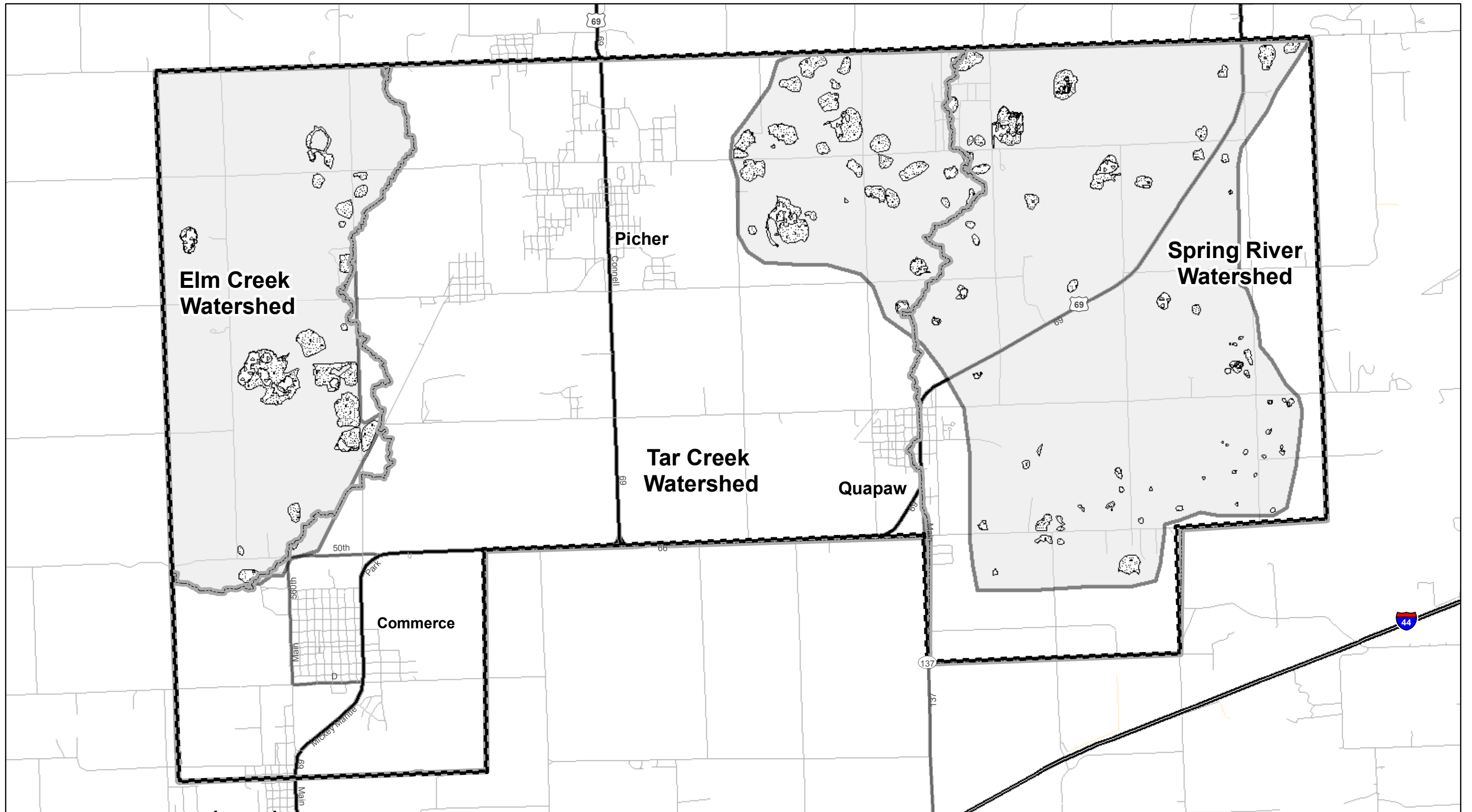



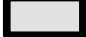
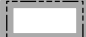


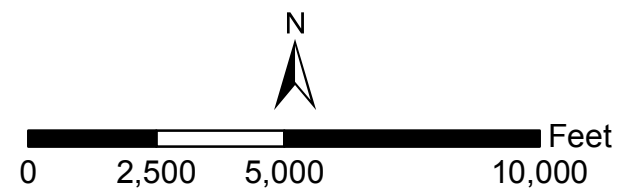
**Figure 1**  
OU 4 Boundary



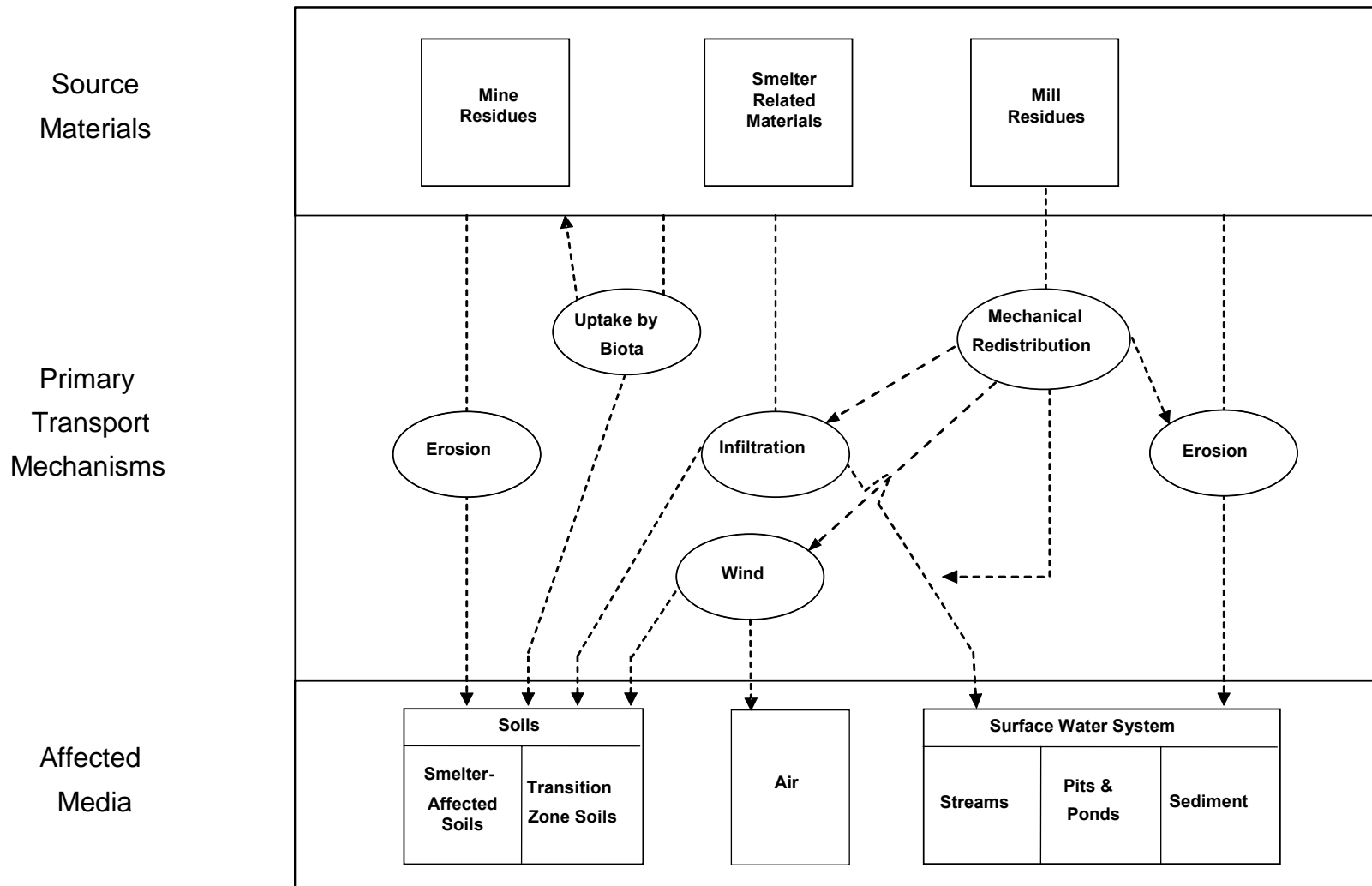


**Legend**

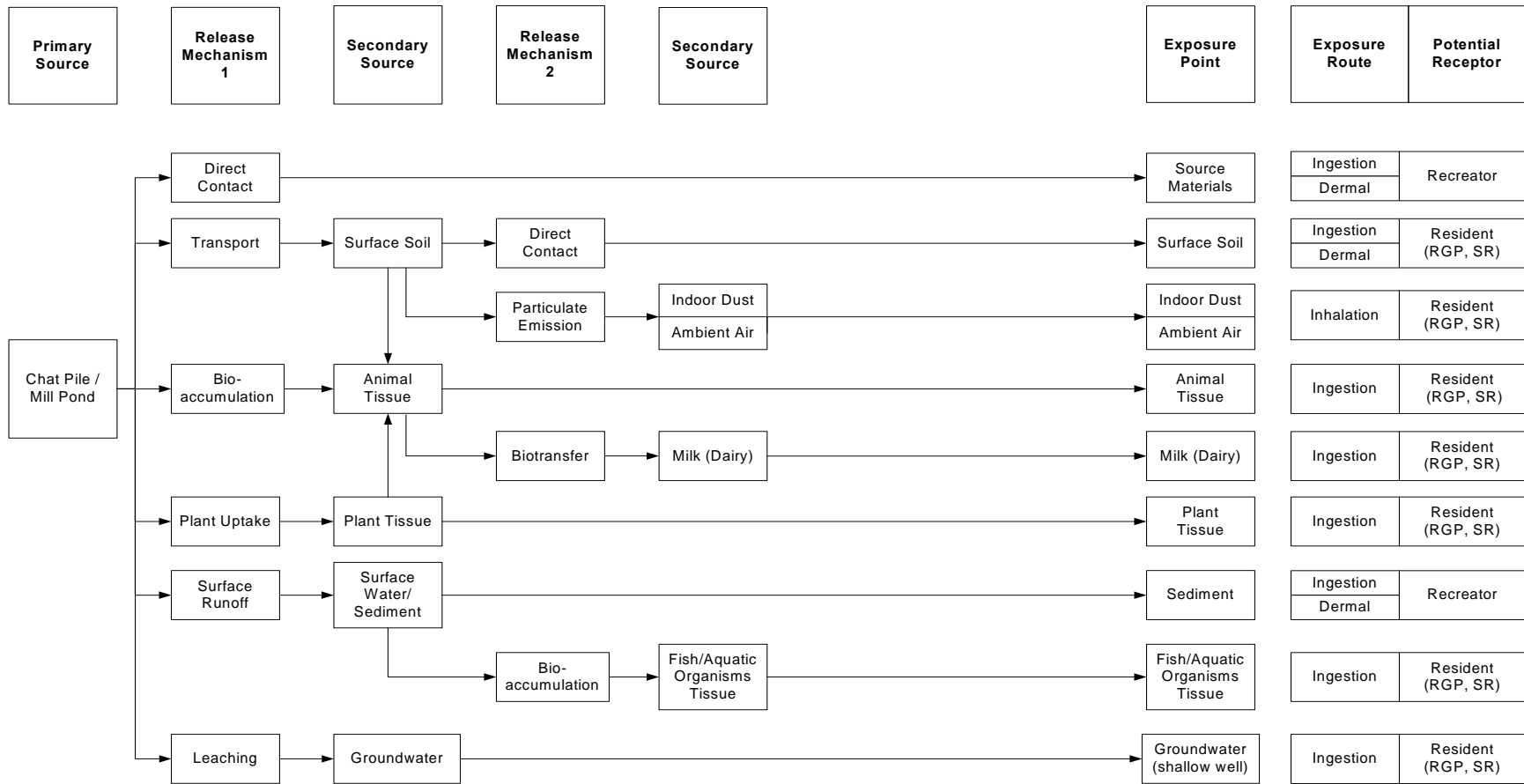
-  Chat Piles
-  Chat Bases
-  Site Boundary
-  Distal Zones
-  Watershed Boundary



**Figure: 3**  
Tar Creek Distal Zones and Watersheds



**Figure 4** Source Materials, Transport Mechanisms, and Affected Media



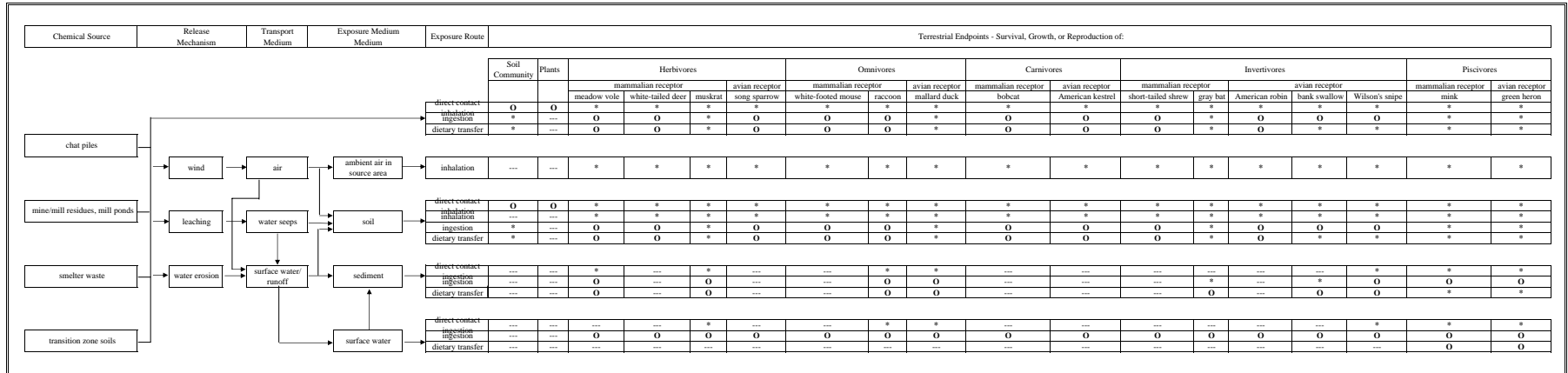
SR - Subsistence Resident  
RGP - Rural General Public

**Conceptual Site Model for HHRA  
Tar Creek OU4, Miami, OK**

**Figure 5**

**Figure 6. Conceptual Site Model and Terrestrial Endpoints Evaluated under OU4**

Tar Creek Site  
Ottawa County, Oklahoma

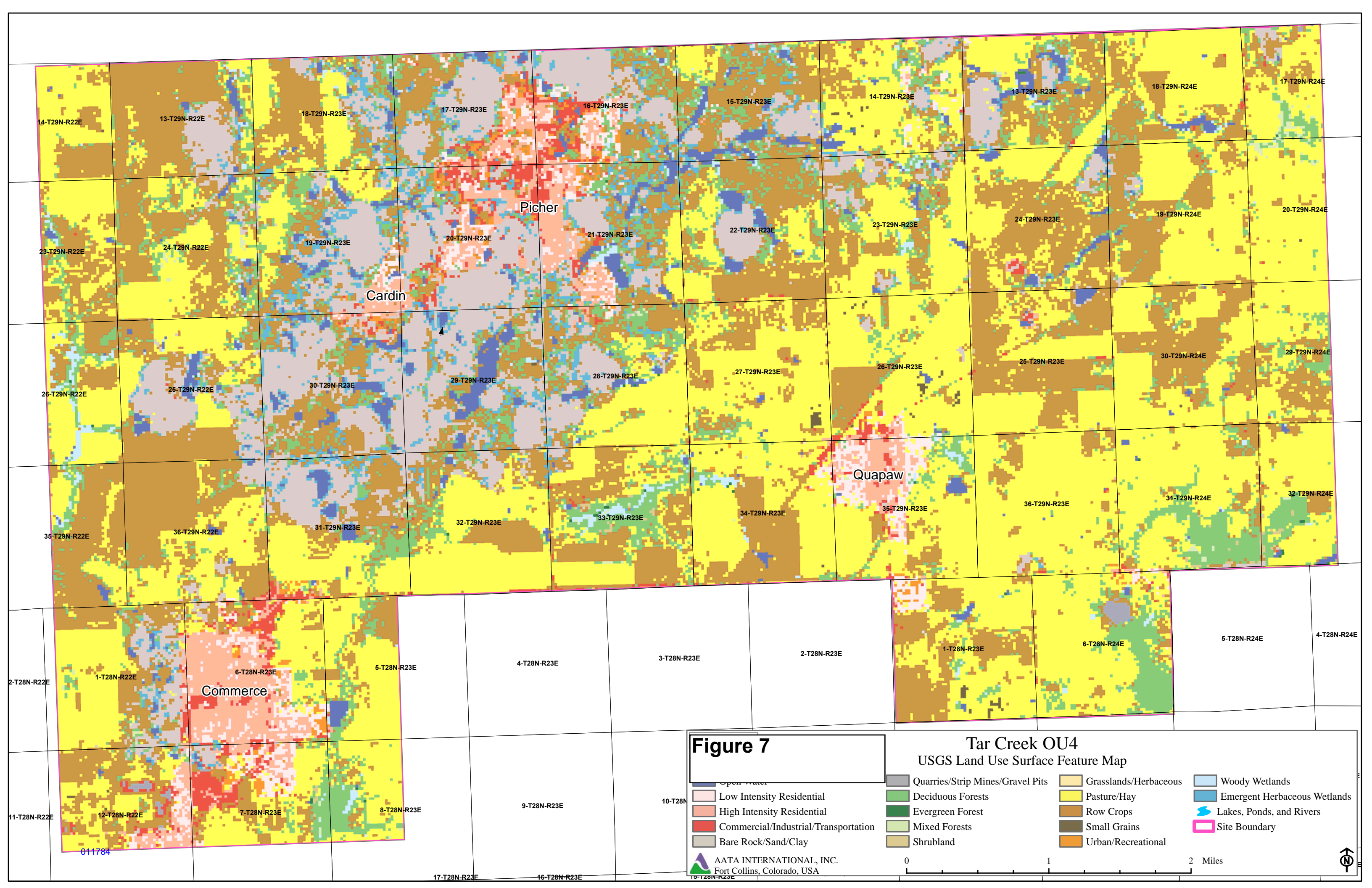


OU: Operational unit

--- Pathway not complete or applicable, no evaluation necessary.

\* Pathway is or may be complete; however, risk is likely low. Pathway not evaluated in Ecological Risk Assessment.

O Pathway is complete and risk may be significant. Pathway evaluated in Ecological Risk Assessment.



**Figure 7**

**Tar Creek OU4**  
USGS Land Use Surface Feature Map

- |                                      |                                  |                       |                              |
|--------------------------------------|----------------------------------|-----------------------|------------------------------|
| Open Water                           | Quarries/Strip Mines/Gravel Pits | Grasslands/Herbaceous | Woody Wetlands               |
| Low Intensity Residential            | Deciduous Forests                | Pasture/Hay           | Emergent Herbaceous Wetlands |
| High Intensity Residential           | Evergreen Forest                 | Row Crops             | Lakes, Ponds, and Rivers     |
| Commercial/Industrial/Transportation | Mixed Forests                    | Small Grains          | Site Boundary                |
| Bare Rock/Sand/Clay                  | Shrubland                        | Urban/Recreational    |                              |

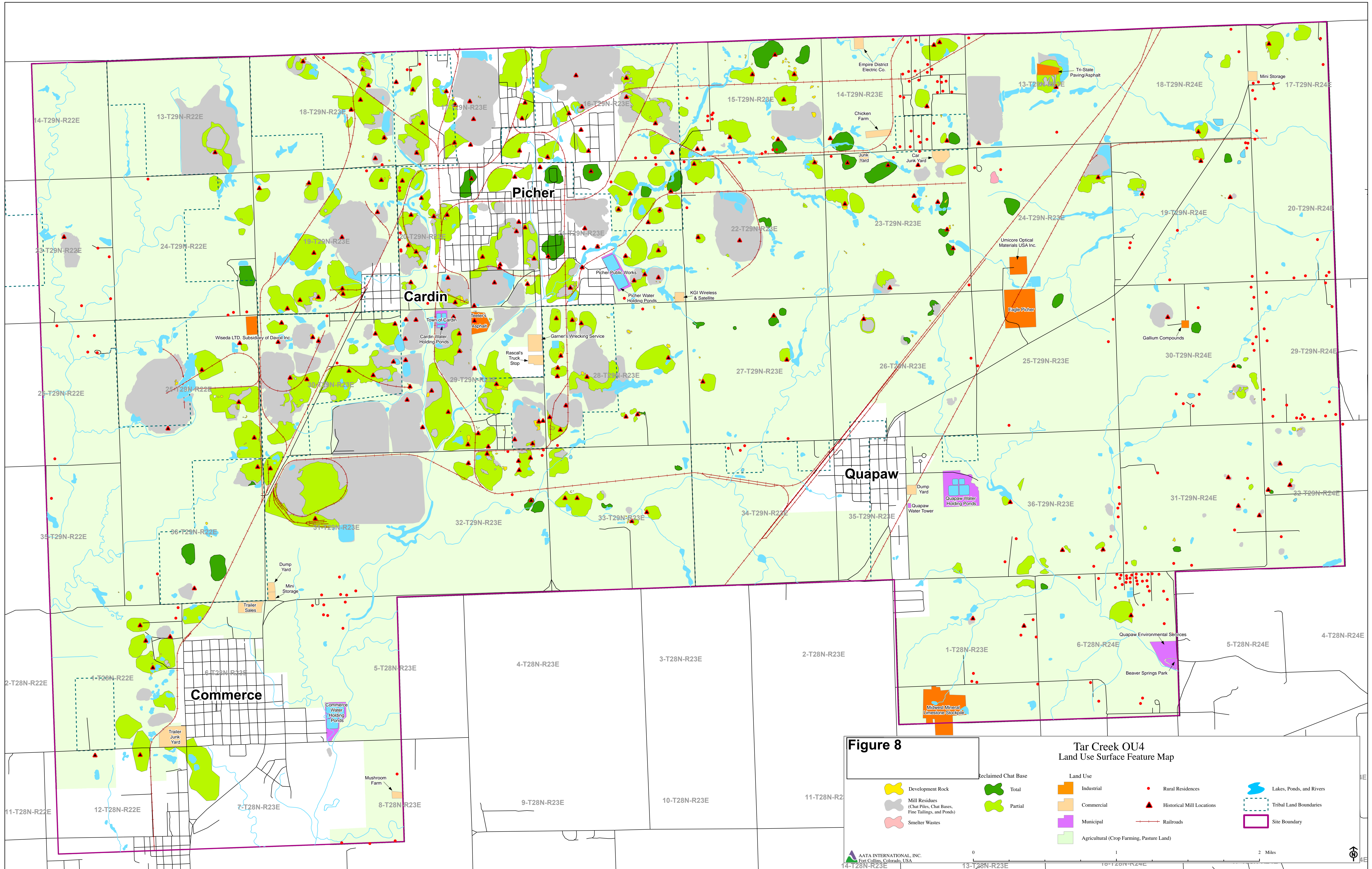
AATA INTERNATIONAL, INC.  
Fort Collins, Colorado, USA

0 1 2 Miles



011784

17-T28N-R23E 16-T28N-R23E 15-T28N-R23E

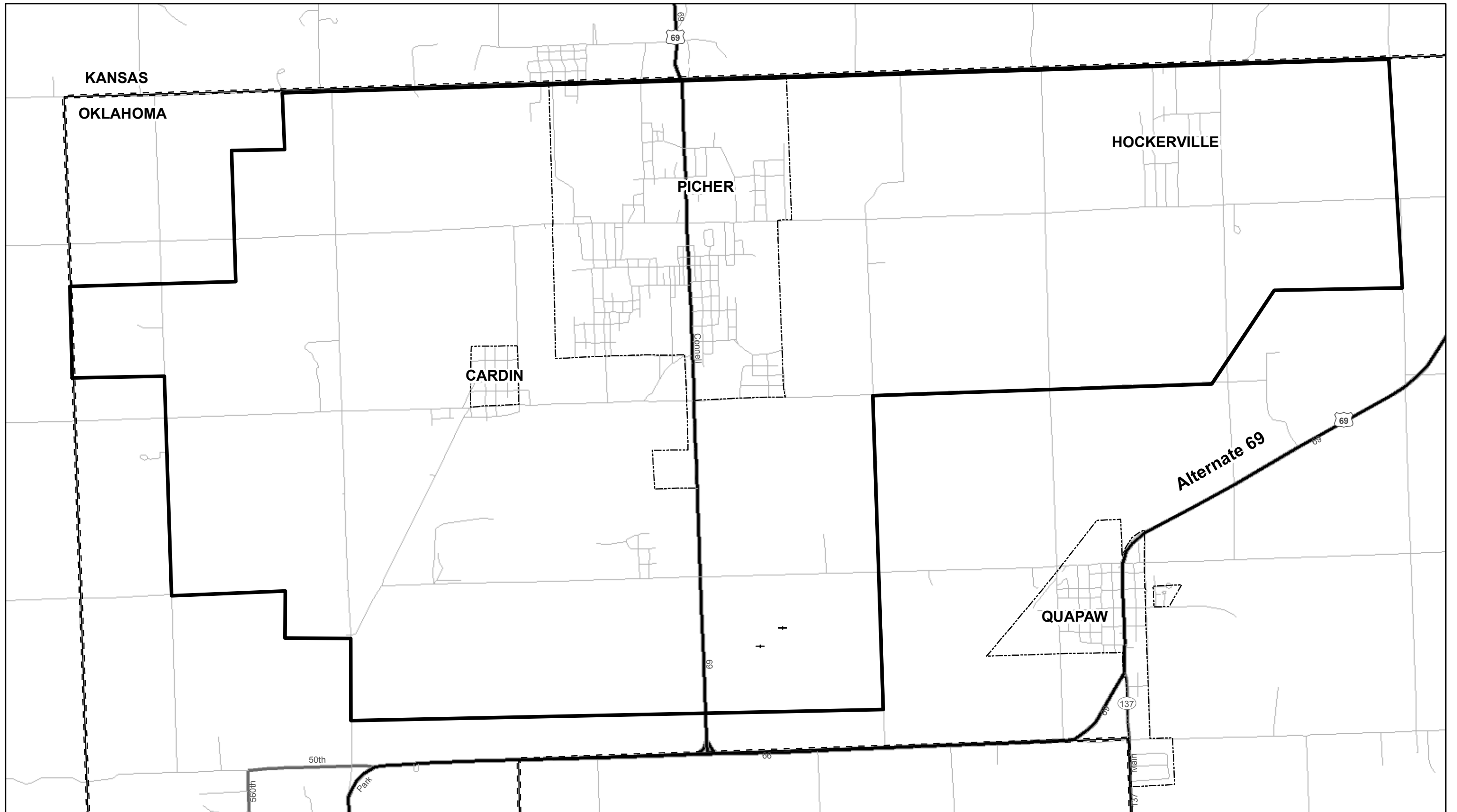


**Figure 8**


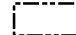

**Tar Creek OU4  
Land Use Surface Feature Map**

- |  |         |   |                           |                          |
|--|---------|---|---------------------------|--------------------------|
| Development Rock   | Total   | Industrial                                | Rural Residences          | Lakes, Ponds, and Rivers |
| Mill Residues<br>(Chat Piles, Chat Bases,<br>Fine Tailings, and Ponds) | Partial | Commercial                                | Historical Mill Locations | Tribal Land Boundaries   |
| Smelter Wastes   |         | Municipal                                 | Railroads                 | Site Boundary            |
|  |         | Agricultural (Crop Farming, Pasture Land) |                           |                          |





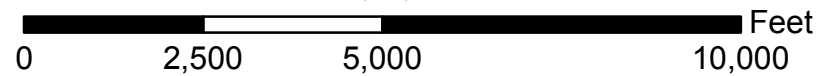
**Legend**

-  Site Boundary
-  City Boundaries
-  Relocation Assistance Boundary

011786



Adopted by the Lead-Impacted Communities Relocation Assistance Trust on August 1, 2006






**Figure: 9**

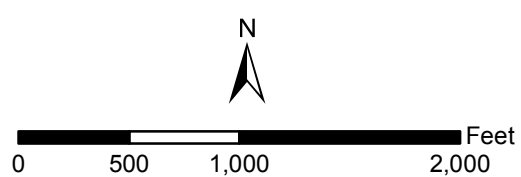
Relocation Assistance Zone

Operable Unit 4



**LEGEND**

-  OU 4 Streams
-  Edge Needing Possible Control
-  Near Stream Chat Pile or Chat Base



**Figure 10**  
**Estimated Source and**  
**Seepage Control Locations**  
**Operable Unit 4**