

COMMUNITY INVOLVEMENT PLAN

**CENTRAL WOOD PRESERVING COMPANY
East Feliciana Parish, Louisiana**

March 2024



**U. S. ENVIRONMENTAL PROTECTION AGENCY
REGION 6**

THE U. S. ENVIRONMENTAL PROTECTION AGENCY'S (EPA)
SUPERFUND COMMUNITY INVOLVEMENT PROGRAM IS COMMITTED
TO PROMOTING COMMUNICATION BETWEEN CITIZENS AND THE AGENCY.

ACTIVE PUBLIC INVOLVEMENT IS CRUCIAL TO THE SUCCESS OF ANY PUBLIC PROJECT.

EPA'S COMMUNITY INVOLVEMENT ACTIVITIES AT THE
CENTRAL WOOD PRESERVING COMPANY
ARE DESIGNED TO

INFORM THE PUBLIC OF THE NATURE OF THE ENVIRONMENTAL ISSUES ASSOCIATED WITH
THE SITE,

INVOLVE THE PUBLIC IN THE DECISION-MAKING PROCESS THAT WILL AFFECT THEM,

INVOLVE THE PUBLIC IN THE RESPONSES UNDER CONSIDERATION TO REMEDY THESE
ISSUES, AND

INFORM THE PUBLIC OF THE PROGRESS BEING MADE TO IMPLEMENT THE REMEDY.

Table of Contents

Section		Page
1.0	Overview of the Community Involvement Plan	2
2.0	Site Background and Description	2
2.1	Site History	2
2.2	Site Description/Location	2
2.3	Site Inspections and Cleanup Activities	3
3.0	Community Involvement Background.....	4
3.1	Community Profile	4
3.2	History of Community Involvement.....	5
3.3	Key Community Concerns and Response to Those Concerns.....	5
3.4	Summary of Communication Needs	5
4.0	EPA’s Community Involvement Program	5
4.1	The Plan	5
4.2	Time Frame Summary for Community Involvement Activities.....	12
 Appendices:		
A	EPA Regional Contacts.....	13
B	Local Officials.....	14
C	State Officials.....	15
D	Federal Elected Officials.....	16
E	Area Map.....	17
F	Site Map.....	18
G	Environmental and Active Citizens Groups.....	19
H	Potentially Responsible Parties.....	20
I	Media Contacts	21
J	Meeting Locations.....	22
K	Repository Locations	23
L	Other Local Resources	24

Section 1.0 Overview of the Community Involvement Plan

The U.S. Environmental Protection Agency (EPA) developed this Community Involvement Plan to facilitate two-way communication between the community surrounding the Central Wood Preserving Company Superfund Site and EPA and to encourage community involvement in site activities. EPA will utilize the community involvement activities outlined in this plan to ensure that residents are continuously informed and provided opportunities to be involved.

This Community Involvement Plan addresses Central Wood Preserving Company Superfund site relationship to the community and EPA (Section 2.0), provides a background of the community (Section 3.0), presents EPA's community involvement program (Section 4.0), and provides a listing of resources available (Appendices). EPA drew upon several information sources to develop this plan, including community interviews and site files. EPA's Regional Office will oversee the implementation of the community involvement activities outlined in this Plan.

Section 2.0 Site Background and Description

2.1 Site History

The Central Wood Preserving (CWP) Superfund site is an abandoned wood preserving facility which operated from the 1950s until January 1973 under the name Central Creosoting Company, Inc. During this time frame, creosote was exclusively used for wood preserving operations at the site. After 1973, the facility became Central Wood Preserving Company, and the use of creosote was discontinued and replaced with Wolmanac, a solution of copper oxide, chromic acid, and arsenic acid. The facility ceased operations in 1991.

2.2 Site Description/Location

The site is located on about 12 acres near Slaughter, East Feliciana Parish, Louisiana, about 20 miles northeast of Baton Rouge. Louisiana State Highway 959 crosses the site. It originally included ten above-ground storage tanks or pressure vessels, twelve on-site buildings, and a concrete-lined containment basin. A creek runs along the southeast side of the site.

2.3 Site Inspections and Cleanup Activities

In 1992, the EPA conducted a Preliminary Site Assessment at the request of Louisiana Department of Environmental Quality (LDEQ). This and subsequent, more detailed, site assessments through 1995 indicated elevated levels of the **heavy metals** arsenic and chromium in soil and **sediment**, and **asbestos** fibers in insulation samples.

EPA began a time-critical removal action on April 12, 1995. The project included the following activities:

- Buildings B-3, B-5, and B-6,
- Building B-10 smokestack.
- Portion of the concrete pad adjacent to the concrete containment basin.
- All storage tanks (ST-1 through ST-10) and contents and associated piping system, and

- Approximately 1,520 cubic yards (CYs) of solids including surface soil from the processing area defined by grid blocks demonstrating arsenic greater than 50 mg/kg and chromium greater than 200 mg/kg, and contaminated sediment from the containment basin.
- Sandblasting and backfilling of the containment basin.

The EPA conducted an Expanded Site Inspection from July to December 1995 to gather information required for Hazard Ranking System (HRS) scoring. The HRS is used to determine if a site qualifies to be placed on the National Priorities List (NPL). The NPL is the list of sites of national priority among the known releases or threatened releases of hazardous substances, pollutants, or contaminants throughout the United States and its territories. The NPL is intended primarily to guide the EPA in determining which sites warrant further investigation. The Site was added to the NPL on May 10, 1999.

In January 1999, EPA began a remedial investigation/feasibility study (RI/FS) on the Site. During the RI, ground water, surface water, soil, sediment, and structural material sampling was conducted to confirm the surface extent of organic contamination, the subsurface extent of inorganic and organic contamination, and the possible contaminant effects on surface water of the Unnamed Creek, groundwater, if present, and on the remaining site structures.

Baseline human health and ecological risk assessments were completed as a part of the RI in September 2000; these risk assessments estimated the probability and magnitude of potential adverse human health and environmental effects from exposure to site contaminants associated with the site assuming no RA was implemented. The risk assessments provided the basis for taking action and identified the contaminants and exposure pathways that needed to be addressed during the cleanup.

EPA selected a remedial alternative and signed a Record of Decision (ROD) for the CWP site on April 5, 2001. The remedy selected in the ROD addressed contamination in the soil and sediment at the CWP Site. Each of the remedial alternatives (other than No Action Alternative) evaluated as part of the detailed analysis performed during remedy selection had certain assumptions and aspects in common or “common elements.” These common elements were divided into:

- Preparatory Activities - grubbing, staging for contaminated soils/sediments, asbestos abatement, building demolition and disposal of materials, and removal and disposal of debris piles.
- Activities During Remediation - air monitoring, backfilling, and disposal of excavated soils/sediments.
- Post-Remedial Activities - institutional controls/deed restrictions and ground water monitoring.

The major components of the selected remedy for soils/sediments included:

- The ROD requires that excavation of surface/near-surface soil/sediment that exceed cleanup levels would be excavated and staged pending treatment/disposal. Excavated soil/sediment that exceeded Land Disposal Restrictions (LDRs) was to be staged separately from excavated soil/sediment that does not exceed LDRs. The excavated soil/sediment exceeding LDRs was to be prepared for treatment and treated with an on-site thermal desorption unit,
- Excavated soil/sediment exceeding LDRs will be prepared for treatment and treated with a thermal desorption unit on-site. Toxicity characteristic leaching procedure sampling of the residuals will be required. If LDRs are exceeded, additional stabilization may be required prior to off-site disposal.

- Excavated soils will be tested and disposed of accordingly.
- The ROD required the North and South Property removal areas be backfilled with clean backfill and revegetated following confirmation sampling. The ROD required that excavated portions of the Unnamed Creek be backfilled with clean backfill and an erosion control layer installed following confirmation sampling.

A Remedial Design (RD) to define the implementation of the remedy for the Site was completed by EPA in May 2002. EPA began the Remedial Action (RA) in November 2003 with excavation and Low Temperature Thermal Desorption (LTTD) completed in September 2004.

Site Preparation was conducted to clear and grub the trees and vegetation in areas identified for soil and sediment • excavation. All of the monitoring wells installed during the RI, with the exception of one of the 65-foot deep wells, MW-S2E5, were properly plugged and abandoned (P&A). Two former water supply wells on the south side of the South Property found during Site Preparation and Demolition activities were also P&A.

Building demolition and asbestos abatement began in January 2004 and were completed in mid-March 2004. Asbestos Containing Materials (ACM) found in two on-site buildings were removed and disposed off-site.

Excavation began on April 19, 2004. A total of 19,764 tons of arsenic-only material and 7,983 tons of arsenic LTTD treated material (total of 27,746 tons) was shipped off-site to Waste Management's Subtitle C landfill located in Carlyss, Louisiana.

Ground water evaluation performed during both the RI and RA indicated the shallow 10 feet below ground surface (bgs) ground water zone is not laterally continuous beyond the drainage pathway and does not demonstrate significant volumes of water (one of three wells installed in this zone did not generate enough water to sample). The ground water encountered at 55 to 65 feet bgs demonstrates capacities that are borderline at best for meeting LDEQ's 2B classification for potentially potable ground water, and ground water is not used from within this or any other zone in the vicinity of the site. Monitoring well abandonment began in late February 2004 and was completed in early March 2004, concurrent with the RA Site Preparation stage of the work. The deepest site excavations for LTTD treatment took place in the area where chemicals of potential concern were found in the monitoring wells installed in the shallow ground water 10 feet bgs beneath the drainage pathway. Excavation likely removed the small amounts of DNAPL found during RD data collection. Existing monitoring well MW-S2E5 was left in place as originally planned, but the number of new monitoring wells was reduced from eight to one (MW-1 was installed in January 2005), based on the expectation that two monitoring wells would be sufficient for evaluation of potential migration to ground water, and based on the limited area of potential ground water contamination observed during site cleanup.

After one year of ground water monitoring showed no screening level exceedances, these two remaining monitoring wells were removed by EPA (properly P&A), at the request of LDEQ. EPA believes that limited ground water contamination is not likely to exceed screening levels and groundwater monitoring is no longer required.

EPA conducted the pre-final inspection on August 25, 2004. EPA determined that the RA construction was completed during this pre-final inspection. A Preliminary Close-Out Report for the

site was signed September 3, 2004. A Final Close-Out Report for the site was signed June 29, 2006. EPA deleted the CWP Site from the NPL on September 18, 2009.

The ROD requires implementation of institutional controls for the Site. Institutional Controls (ICs) have been implemented in areas where contaminants were left in place in the subsurface at concentrations above the Remediation Goals. On September 30, 2005, The East Feliciana Parish Jury submitted conveyance records as appropriate or as allow by law to prevent exposure to contaminants remaining on-site on the North Property below three free bgs.

The fencing around the North and South Properties of the Site provides access control to prevent illegal dumping and disposal of waste.

The Operation and Maintenance (O&M) required is maintaining the site such that soils greater than three feet bgs are not exposed. This is accomplished by the parish inspecting and repairing ruts caused by heavy equipment and vehicles using the site for woody debris storage. The parish ensures that site fencing is maintained while the site is being used for hurricane/storm debris staging.

Section 3.0 Community Background

3.1 Community Profile

The Central Wood Preserving site is bordered by woodlands to the north and south, residential property to the west, and a creek and associated wetlands to the east-southeast. The former facility operations area drains to the wetlands. The property currently is vacant and partially fenced.

At the time of the ROD, it was estimated that approximately 140 people lived within one mile of the site. The residences adjacent to the site on the west were originally built to house plant employees. A number of former workers still live next door to the site. An underground storage tank, which may contain product, remains on this property. EPA has notified the LDEQ about the existence of the tank.

Although predominantly rural, residential land use in the area is increasing. New housing starts are up, and a number of families from Baton Rouge have relocated to new homes on Highway 959.

The local demographics are as follows. The following figures are only estimates.

Ethnicity	Population
Caucasian	88.6%
Hispanic	1.8%
African-American	3.3%
Native American	2.9%
Pacific Islander	.0%
Other Races	.09%
More Than One Race	4.2%

3.2 History of Community Involvement

The community interviews provided interested citizens with opportunities to ask questions, voice their opinions and concerns about site activities and issues, and learn more about the Superfund program. Community interviews were held June 9th and 10th, 1999. A second round of community interviews was held on March 1st and 4th 2000. The Proposed Plan meeting was January 24, 2001, a community open house meeting was held on November 29, 2004 and Five-year review community interview were conducted in July 2023.

3.3 Key Community Concerns and Responses to those Concerns

The community has no issues or concerns at this time.

3.4 Summary of Communication Needs

To ensure community concerns are identified and are provided an appropriate response, community visits will be initiated by the EPA Community Involvement Coordinator. Fact sheets in regards to site activities will also be produced to provide the community the most current information on the site. An internet website has been established to assist in providing information to the community. EPA will also maintain a toll-free number available to the community to allow immediate access to the Site EPA Project Manager and Community Involvement Coordinator.

Section 4.0 EPA's Community Involvement Program

The overall goal of EPA's community involvement program is to promote two-way communication between citizens and the EPA and to provide opportunities for meaningful and active involvement by the community in the cleanup process. EPA will implement the

community involvement activities described below. The following plan is based on the results of the community interviews described earlier; it addresses each issue that was identified as being important to the community.

4.1 The Plan

Issue 1: Keeping the public informed and up to date.

Activity 1A: Designate an EPA Community Involvement Coordinator (CIC).

- **Objective:** To provide a primary liaison between the community and the EPA, and to ensure prompt, accurate, and consistent responses, and information dissemination about the site. In those instances where EPA's CIC may be unable to provide adequate information (such as on technical issues), inquiries will be directed to the appropriate EPA contact.
- **Method:** EPA will designate an EPA CIC to handle site inquiries and serve as a point of contact for community members. The CIC is appointed by the Region 6 headquarters. Jason McKinney is the EPA's third CIC assigned to the site. He will work closely with Oliver Bernal, EPA's Remedial Project Manager for the site.
- **Timing:** The current CIC was designated September 2022.

Activity 1B: Prepare and distribute site fact sheets and technical summaries.

- **Objective:** To provide citizens with current, accurate, easy-to-read, and easy-understand information about Central Wood Preserving.
- **Method:** Fact sheets will be mailed to all parties on the site mailing list. In addition, copies will be available at the information repository and in various cooperating business locations in the community.
- **Timing:** EPA will prepare and distribute fact sheets as needed depending on site activities and community needs.

Activity 1C: Involve students, parents, teachers through area schools.

- **Objective:** To educate faculty, students, and their parents about the site, to invite and address their concerns regarding it, and to caution students about the site.
- **Method:** Address school faculty and students through visits and presentations to classroom, faculty, school assembly, or other meetings or events. Additionally, communicate with parents through take-home materials provided to the students and/or by attending and participating in PTA meetings or events.

- Timing: As community concern warrants or at least every year until the site is closed out.

Activity 1D: Provide a toll-free “800 number” for the community to contact EPA.

- Objective: To enable citizens to get the latest information available when they want it, rather than having to wait for a meeting or a fact sheet, and without incurring any cost.
- Method: EPA will activate the 800 number and publish it periodically in the local papers and in all fact sheets.
- Timing: The line is currently operational 800.533.3508.

Activity 1E: Maintain a mailing list for the Site.

- Objective: To facilitate the distribution of site-specific information to everyone who needs or wants to be kept informed about the site.
- Method: EPA had created a mailing list that includes all residences adjacent to the site, in known or suspected paths of migration, or those otherwise affected by the site. EPA will also solicit interested parties via fact sheets, newspaper articles, public meetings, public availabilities, etc.
- Timing: EPA will begin working on this mailing list immediately and will review/revise it periodically to keep it current.

Activity 1F: Establish and maintain Information Repositories.

- Objective: To provide a convenient location where residents can go to read and copy official documents and other pertinent information about the site and EPA activities.
- Method: The repository is a reference collection of site information containing the Administrative Record file, other site-specific information, the Community Involvement Plan, information about the Technical Assistance Grant program, and the general Superfund process. The Community Involvement Coordinator will work with a local contact to establish the local repository. This repository will be accessible to the physically challenged, will have copier facilities, and will be available to residents during normal business hours and at least some evening and/or weekend hours.
- Timing: EPA established the local repository at the Audubon Regional Library, Clinton Branch, located at 12220 Woodville Street in Clinton, Louisiana 70722. The repository was established in April 1995. EPA will add new documents as they become available.

Activity 1G: Provide Site and Superfund information on the Internet.

- Objective: To provide key resources for searching and listing both general and specific information about Superfund and hazardous waste issues.
- Method: A Site Status Summary for this site can be found at <https://cumulis.epa.gov/supercpad/cursites/csitinfo.cfm?id=0604527>

Information about EPA and Superfund can be found at: EPA Headquarters: <https://www.epa.gov/superfund>

EPA Region 6: <https://www.epa.gov/aboutepa/epa-region-6-south-central>

The Proposed Plan and the Record of Decision (ROD) for the site are on the EPA internet website.

- Timing: Site Status Summaries are updated monthly.

Activity 1H: Provide Technical Assistance Grant (TAG) information.

- Objective: To provide resources for community groups to hire technical advisors who can assist them in interpreting technical information about the site.
- Method: EPA will provide information about the TAG program at public meetings and in site fact sheets. EPA will also provide briefing sessions to interested groups if so requested. EPA will provide TAG applications to qualified groups and will provide assistance to the group in completing the application.
- Timing: Ongoing

Activity 1I: Establish and maintain the Administrative Record.

- Objective: To provide residents with a paper trail of all documents, resources, etc. used by the Regional Project Manager and Site Team in reaching all decisions about the site and its cleanup.
- Method: EPA will provide at least two sets of the Administrative Record for the site, one in the EPA Region 6 offices located at 1201 Elm Street, Suite 500, Dallas, Texas 75270 and one located in the local Information Repository near the site.
- Timing: The Administrative Record was opened as soon as site investigation began and remains open until the last ROD is signed.

Issue 2: Provide adequate and meaningful opportunities for community involvement.

Activity 2A: Hold public meetings.

- Objective: To update the community on site developments and address community questions, concerns, ideas and comments.
- Method: Refer to Appendix J for suggested meeting locations. EPA will schedule, prepare for, and attend all announced meetings. EPA will provide at least two weeks' notice of the scheduled meeting. The Regional Project Manager, Community Involvement Coordinator, and other appropriate EPA staff will attend.
- Timing: A public meeting is required during the Proposed Plan comment period once the RI/FS is completed. EPA will hold other public meetings as appropriate. The EPA held a public meeting on November 29, 2000 and on January 24, 2001.

Activity 2B: Encourage formation of a Community Advisory Group (CAG).

- Objective: To provide citizens with a meaningful way to become actively involved, and to provide the Site Team with a viable means of learning citizen concerns and attitudes.
- Method: EPA will encourage the formation of a CAG and provide support as appropriate to facilitate its formation. If formed, EPA will provide administrative support but will not be an active member.
- Timing: EPA will respond to any requests for help to form a CAG. As necessary, EPA will promote CAGs regularly throughout the Superfund process until one is formed.

Activity 2C: Make informal visits to community.

- Objective: To help keep community members informed about the site, while providing EPA with feedback about site activities and the community's opinions.
- Method: EPA will establish a presence in the community through informal, often unscheduled visits to talk spontaneously with local residents.
- Timing: Throughout the entire Superfund process.

Activity 2D: Community Interviews

- Objective: To get a good feel for community concerns regarding the Site.
- Method: Door to door visits and interviews with as many residents as possible.

- Timing: Ongoing

Activity 2E: Solicit comments during a Public Comment Period.

- Objective: To give community members an opportunity to review and comment on various EPA documents, especially the Proposed Plan. This provides the citizens with meaningful involvement in the process and also provides the Site Team with valuable information for use in making decisions.
- Method: EPA will announce each comment period separately. Announcements will appear in local newspapers and EPA fact sheets; they will include particulars on duration, how to make comments, where to submit comments, etc. EPA may solicit comments on the following information/draft documents: draft CIP, draft summary of test results (not individual tests) and initial interpretation, preliminary findings on the RI and a list of possible remedies likely to be considered, preliminary findings of the FS and a summary of the leading contender for the proposed remedy, and preliminary plans for implementation and construction.
- Timing: Comment periods will be announced as appropriate. A comment period is required in conjunction with the announcement of the Proposed Plan and will last a minimum of 30 days. The comment period for the Proposed Plan will commence once the RI/FS has been completed and the Proposed Plan has been drafted.

Activity 2F: Prepare and issue a Responsiveness Summary.

- Objective: To summarize comments received during comment periods, to document how the EPA has considered those comments during the decision-making process, and to provide responses to major comments.
- Method: EPA prepared a Responsiveness Summary as a section of the Record of Decision. The Responsiveness Summary included four sections: 1. Overview; 2. Background on Community Involvement; 3. Summary of comments received and Agency responses; 4. Remedial Design/Remedial Action concerns. All information, both technical and nontechnical, was conveyed in a manner that is easily understood.
- Timing: EPA issued the Responsiveness Summary as part of the Record of Decision (ROD). The ROD was completed once the EPA received the results of the RI/FS and the Proposed Plan was completed.

Activity 2G: Revise the Community Involvement Plan (CIP).

- Objective: To identify and address community needs, issues, or concerns regarding the site or the cleanup remedy that are not currently addressed in this CIP.
- Method: The Revised CIP will update the information presented in the previous version of the CIP.
- Timing: EPA will revise the CIP as community concern warrants or at least every three years until the site is closed out.

Activity 3A: Provide Technical Assistance Services for Communities (TASC) information.

- Objective: A headquarters contracting mechanism that provides a resource for independent, non-advocacy educational and technical assistance to a community affected by hazardous waste sites regulated by CERCLA and RCRA. This is contract service is provided to communities so they can more effectively participate in the hazardous waste cleanup process in a more expedited manner.
- Method: EPA will provide information about the TASC program at public meetings and comprehensive fact sheets as applicable. EPA will also provide briefing sessions to interested groups if so requested. EPA will provide information on TASC contract information to qualified groups and will provide assistance to the applicant group in completing the Statement of Work for the contract application.
- Timing: As needed

4.2 Time Frame Summary for Community Involvement Activities

ACTIVITY	TIME FRAME
Designate an EPA Community Involvement Coordinator (CIC)	Completed
Prepare and distribute site fact sheets and technical summaries	As needed, at least two yearly
Involve students, parents, teachers through area schools	As needed, at least annually
Provide a toll-free "800 number" for the community to contact EPA	Currently in operation
Maintain a mailing list for the Site	Ongoing
Establish and maintain Information Repositories	Established, update as needed
Provide Site and Superfund information on the Internet	Currently available; update as needed
Provide Technical Assistance Grant (TAG) information	Ongoing
Establish and maintain the Administrative Record	Established, update as needed
Conduct special events	As needed
Hold community/public meetings	As needed
Encourage formation of a Community Advisory Group (CAG)	Ongoing
Make informal visits to community	As needed
Solicit comments during a Public Comment Period	As needed and required
Prepare and issue a Responsiveness Summary	Following public comment periods
Revise the Community Involvement Plan (CIP)	As needed, at least every 3 years

Appendix A
EPA Regional Contacts

Oliver Bernal
Remedial Project Manager
U.S. EPA, Region 6 (6SF-RL)
1201 Elm Street, Suite 500
Dallas, TX 75270
Tel: 214.665.6773
Toll Free: 800.533.3508
Fax: 214.665.6660
Email: bernal.oliver@epa.gov

Jason T. McKinney
Community Involvement Coordinator
U.S. EPA, Region 6 (ORA-XO)
1201 Elm Street, Suite 500
Dallas, TX 75270
Tel: 214.665.8132
Toll Free: 800.533.3508
Fax: 214.665.6660
Email: mckinney.jason@epa.gov

Janetta Coats
Technical Assistance Grant Project Officer
U.S. EPA, Region 6 (ORA-XO)
1201 Elm Street, Suite 500
Dallas, TX 75270
Tel: 214.665.7308
Toll Free: 800.533.3508
Fax: 214.665.6660
Email: coats.janetta@epa.gov

**Louisiana Department of Environmental Quality
Contacts**

Keith Horn, M.S.
Project Manager
605 North Fifth Street
Baton Rouge, LA 70802
Tel: 225.219.3717
Email: Keith.horn@la.gov

Appendix B
Local Officials

Slaughter Mayor

Janis Landry
3337 Church Street
Slaughter, LA 70777
Tel: 225.654.4278
Fax: 225.654.1480
Email: mayor@townofslaughter.org

City Alderman Members

Adele Fleming
Natasha Paxton
Steve Rader
Allen Hobgood
Mona Almond

City Manager

Genique Henderson
3337 Church Street
Slaughter, LA 70777
Tel: 225.654.4278
Fax: 225.654.1480
Email: slaughtertownclerk2@gmail.com

Police Chief

Chief Walter Smith
804 W. Railroad Avenue
P.O. Box 579
Slaughter, LA 70777
Tel: 225.654.2382
Fax: 225.654.6996

Fire Department

819 W. Railroad Avenue
Slaughter, LA 70777
Tel: 225.654.1693

East Feliciana Police Jury President

Louis Kent
12064 Marston Street
Clinton, LA 70722
Tel: 225.683.8577
Fax: 225.683.3100
Email: parishsecretary@efparish.org

Police Juries

Dr. Chrissie O'Quin, Vice President
Kristin Chasteen
Dexter Armstead
Jason McCray
Keith Mills
Richard Oliveaux
Michael Cheatham
Kyle Fleniken

Parish Manager

Yamesha L. Harris
12064 Marston Street
Clinton, LA 70722
Tel: 225.683.8577
Fax: 225.683.3100
Email: parishmanager@efparish.org

Parish Sheriff

Sheriff Jeff Travis
11315 Bank Street
P.O. Box 207
Clinton, LA 70722
Tel: 225.683.8572
Fax: 225.683.8823

Appendix C
State Officials

State Senator – District 17

Caleb Seth Kleinpeter
Box 94183
Baton Rouge, LA 70804
Tel: 225.342.2040
Email: sen17@legis.la.gov

District Office

3741 Highway 1
Port Allen, LA 70767
Tel: 225.246.8838
Fax: 225.246.8839

State Representative – District 34

Roy Daryl Adams
Box 94062 (900 North 3rd Street)
Baton Rouge, LA 70804
Tel: 225.342.6945
Email: hse062@legis.la.gov

District Office

P.O. Box 217
Jackson, LA 70748
Tel: 225.634.7470
Fax: 225.634.7477

Appendix D
Federal Elected Officials

U.S. Senate

Senator Bill Cassidy, M.D.
455 Dirksen Senate Office Building
Washington, DC 20510
Tel: 202.224.5824

District Office

450 Laurel Street, Suite 1400
Baton Rouge, LA 70801
Tel: 225.929.771
Fax: 225.383.3768

Senator John Kennedy
437 Russell Senate Office Building
Washington, DC 20510
Tel: 202.224.4623
Fax: 202-228-0447

District Office

7932 Wrenwood Blvd., Suite A & B
Baton Rouge, LA 70809
Tel: 225.926.8033

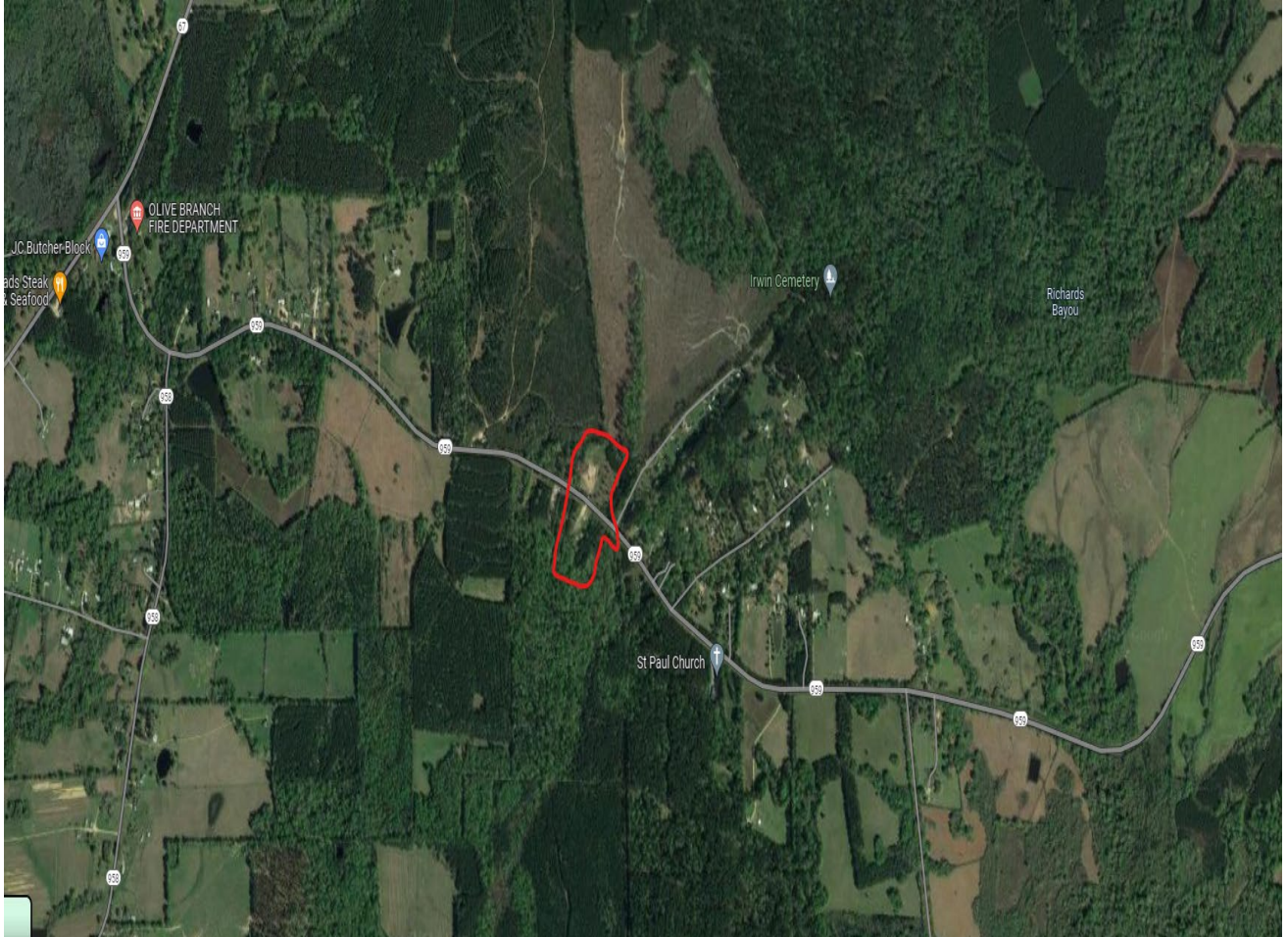
U.S. House of Representatives – District 27

Congresswoman Julia Letlow
142 Cannon House Office Building
Washington, DC 20515
Tel: 202.225.8490

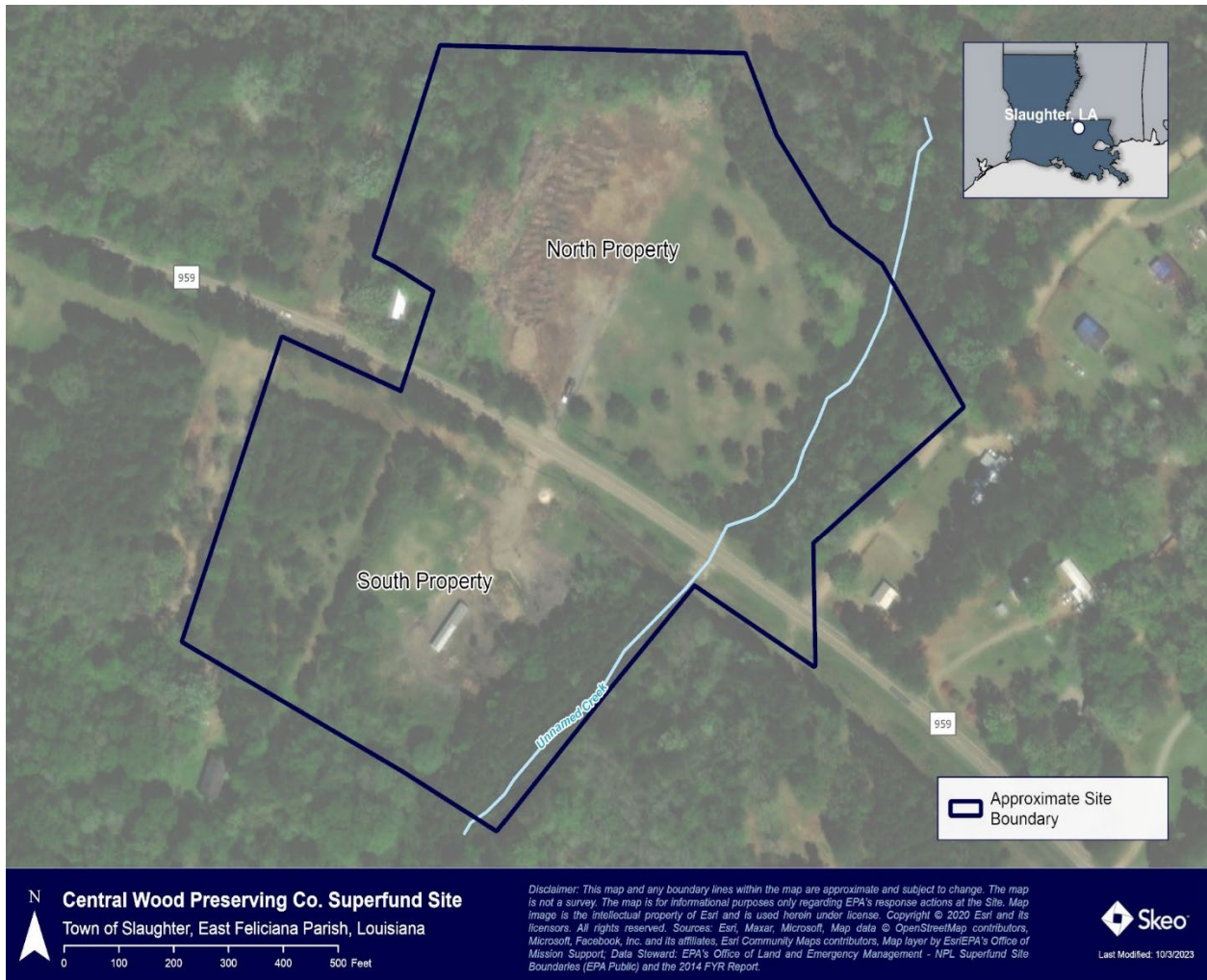
District Office

109 E. Oak Street
Amite, LA 70422
Tel: 985.284.5200

Appendix E Area Map



Appendix F Site Map



Appendix G
Environmental and Active Citizens Groups

- None at this time

Appendix H
Potentially Responsible Parties

- None at this time

Appendix I
Media Contacts

Newspaper

The Advocate
10705 Rieger Road
Baton Rouge, LA 70809
Tel: 225.383.0111

Radio

KQXL-FM (Q106.5)
631 Main Street
Baton Rouge, LA 70801
Tel: 225-926-1106

104.5/104.9 ESPN Baton Rouge
929 Government St.
Baton Rouge, LA 70802
Tel: 225-499-1045

101.5 WYNK (Country)
5555 Hilton Avenue, STE 500
Baton Rouge, LA 70808
Tel: 225.231.1860

WJBO Newsradio
5555 Hilton Avenue, STE 500
Baton Rouge, LA 70808
Tel: 844-234-3575

Television Stations

WAFB 9 News (CBS)
844 Government Street
Baton Rouge, LA 70815
Tel: 225.215.4700

WBRZ News 2 (ABC)
1650 Highland Road
Baton Rouge, LA 70802
Tel: 225.336.2302

WVLA Channel 33 (NBC)
10000 Perkins Road
Baton Rouge, LA 70810
Tel: 225.766.3233

Louisiana Public Broadcasting (PBS)
7733 Perkins Road
Baton Rouge, LA 70810
Tel: 225.767.4200

WGMB-TV Channel 44 (FOX)
10000 Perkins Road
Baton Rouge, LA 70810
Tel: 1.877.480.3201

Appendix J
Meeting Locations

Audubon Regional Library
Clinton Branch
12220 Woodville Street
Clinton, Louisiana 70700
Tel: 225.683.8753

Appendix K
Repository Locations

Local Repository

Audubon Regional Library
Clinton Branch
12220 Woodville Street
Clinton, Louisiana 70700
Tel: 225.683.8753

LDEQ Repository

Inactive and Abandoned Sites
7290 Bluebonnet
Baton Rouge, LA 70810
Tel: 225.219.5337
Toll Free: 866.896.5337

Appendix L
Other Local Resources

East Feliciana Public School

12732 Silliman Street
Clinton, LA 70722
Tel: 225.683.8277
Fax: 225.683.3320

Keisha L. Netterville
Superintendent of Schools
Tel: 225.683.8277
Email: knetterville@efschoools.net

Elementary Schools &

Slaughter Elementary

3170 Church Street
Slaughter, LA 70777
Tel: 225.654.4527
Principal: Jennifer Thornton

Middle Schools

East Feliciana Middle School

10410 Plank Road
Clinton, LA 70722
Tel: 225.683.3321
Principal: Kimberly Jackson

High School

East Feliciana High School

3501 Hwy. 10
Jackson, LA 70748
Tel: 225.634.5931
Principal: Dr. Karen Williams