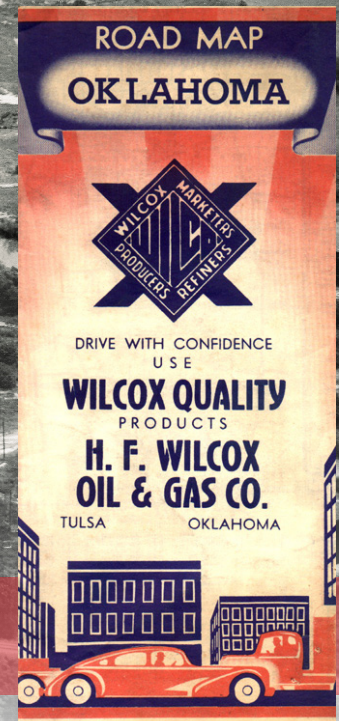
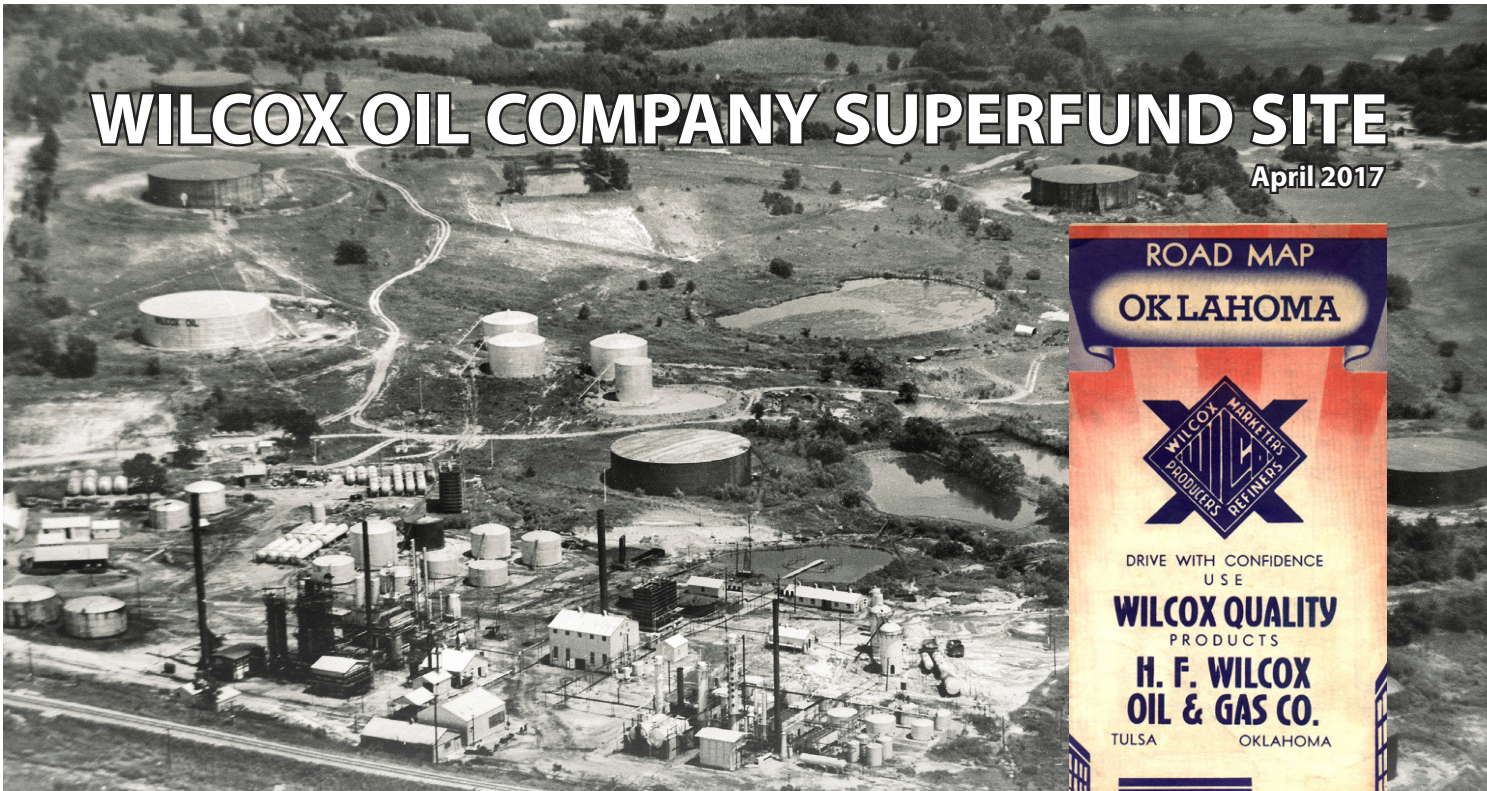


WILCOX OIL COMPANY SUPERFUND SITE

April 2017



BRISTOW, CREEK COUNTY, OKLAHOMA

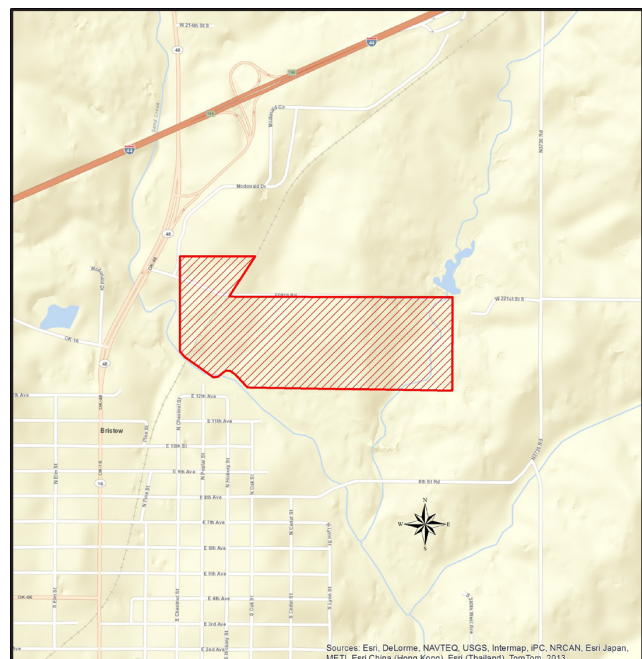
Under the federal Superfund program, the U.S. Environmental Protection Agency (EPA) and the Oklahoma Department of Environmental Quality (DEQ) are working to address contamination at the Wilcox Oil Company Superfund site in Bristow, Oklahoma. This is one in a series of site updates you will receive from EPA and DEQ as cleanup efforts progress.



SITE LOCATION AND HISTORY

The site consists of the former Lorraine/Wilcox Refinery located near Bristow, Oklahoma. The site was utilized by two different refineries with overlapping boundaries from 1915 to 1963. Wilcox operated as a crude oil refinery from the 1920s until 1963. A skimming and cracking plant was constructed in 1929. The main components of the plant consisted of skimming plant, cracking unit, and re-distillation battery with vapor recovery system and treatment equipment.

Wilcox expanded when it acquired the Lorraine Refinery in 1937, which was located adjacent to Wilcox. The two refineries comprise approximately 150 acres. The site includes remnants of former oil refining operations and tank farms.



Wilcox Superfund Site boundary

Multiple sampling events have been conducted by DEQ at the request of EPA Region 6. Preliminary Assessment (PA), Site Inspection (SI), and Expanded Site Inspection (ESI) have been performed at both facilities, along with other investigations performed by EPA.

On May 24, 2013, EPA proposed the Wilcox Oil Company site to the National Priorities List (NPL a.k.a Superfund Sites) list.

On December 12, 2013, The Wilcox Oil Company site officially became a Superfund Site (EPA ID# OK0001010917), when it was added to the NPL.

WHAT IS SUPERFUND?

Superfund is the federal government's program to clean up the nation's uncontrolled hazardous waste sites.

- The Superfund Program was established by the Comprehensive Environmental Response, Compensation and Liability Act (CERCLA) of 1980. CERCLA was amended by the Superfund Amendments and Reauthorization Act (SARA) in 1986 and the Small Business Liability Relief and Brownfields Revitalization Act of 2002.
- CERCLA is the law that allows EPA to clean up contaminated sites and to compel responsible parties to perform cleanups or reimburse the government for EPA-funded cleanups.



NEXT STEPS

After a site is listed on the NPL, a Remedial Investigation/Feasibility Study (RI/FS) is performed at the site.

The Remedial Investigation (RI) involves collecting environmental samples from the site to determine the extent of contamination. The RI report includes Human Health and Ecological Risk Assessments. The risk assessments evaluate potential risks to people and the environment from exposure to contaminants at the site.

Once the site is understood in terms of contamination and the risks posed, the next step is to evaluate technologies to clean-up the site. This step is called the Feasibility Study (FS). This study considers available clean-up technologies and then uses a detailed analysis to decide the best way to address the risks and clean-up the site. The best approach will then be assembled in a draft Proposed Plan which will be available for public review and comment. This will be followed by the selection of a remedy for the site. Once funded, the process will take 2 to 3 years to complete.

STEPS TO PREVENT EXPOSURE TO CONTAMINATION ON THE SITE

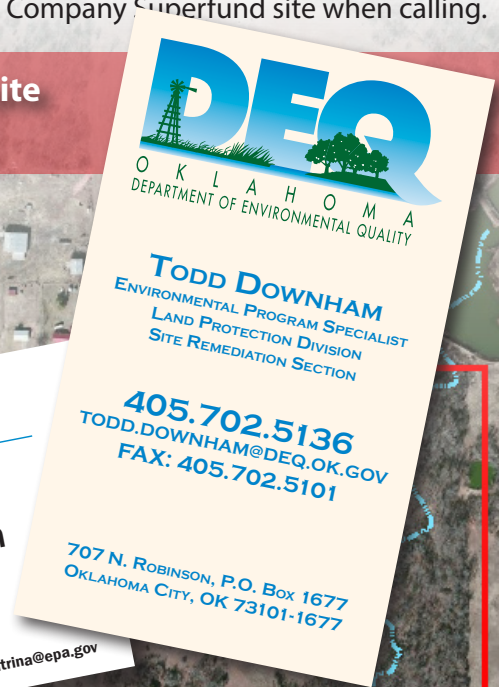
For those people living, working or visiting the site, it is important not to introduce contamination into

homes. If you have reason to be on the Wilcox site, the following are some recommendations to limit/reduce exposure to contamination on the site. The concern about exposure is limited to the areas on the site where contamination is present:

- Ensure proper hygiene, especially frequent hand washing and rinsing outside toys
- Avoid/restrict access to exposed areas of visible oily waste
- Reduce exposure to bare soil in accessible areas
- Plant ground cover or shrubbery to reduce exposure to bare soil
- Keep fruit and vegetable gardens away from oily sludge areas
- Use gloves to avoid direct contact with soils
- Soil should be thoroughly shaken off clothes and footwear, before entering homes
- Keep and use a doormat or brush for footwear outside outer doors
- Construct raised beds filled with purchased soil for vegetable gardening
- Rinse and launder gardening clothing promptly to avoid bringing contaminated soil into the home
- Wash floors and vacuum carpets regularly
- Test home for lead paint
- Participate in child blood lead test programs with the county Health Department

If you have any health concerns related to the Wilcox Oil Company Superfund Site, contact Monty Elder at the DEQ at (405) 702-9132. Please reference the Wilcox Oil Company Superfund site when calling.

If you would like to be placed on a mailing list for site updates, please contact:



PUBLIC INVOLVEMENT OPPORTUNITIES

One of DEQ's and EPA's goals for site cleanup is to continue reaching out to the citizens of Bristow and ensuring opportunities for public involvement in the decision making process. Your input is important to us. We will continue to update you about each step in the Superfund process through periodic fact sheets and informational open houses.

DEQ and EPA will write a Community Involvement Plan (CIP) which will be made available at the site information repository in the Bristow Library. Project documents will be placed in the Bristow library and on the DEQ website throughout the Superfund process.

SITE INFORMATION RESOURCES

KATRINA HIGGINS-COLTRAIN,
REMEDIAL PROJECT MANAGER
U.S. EPA Region 6, LA/OK/NM Section
1445 Ross Avenue
Dallas, Texas 75202-2733
(214) 665-8143
E-Mail: Coltrain.Katrina@epa.gov

TODD DOWNHAM, PROJECT MANAGER
Oklahoma Department of Environmental Quality
707 N. Robinson, PO Box 1677
Oklahoma City, Oklahoma 73101-1677
(405) 702-5136
E-Mail: Todd.Downham@deq.ok.gov

ERIN HATFIELD, PUBLIC INFORMATION OFFICER
Oklahoma Department of Environmental Quality
707 N. Robinson, PO Box 1677
Oklahoma City, Oklahoma 73101-1677
(405) 702-7119
E-Mail: Erin.Hatfield@deq.ok.gov

BILL LITTLE, COMMUNITY INVOLVEMENT
COORDINATOR
U.S. EPA Region 6 (6SF-VO)
1445 Ross Avenue
Dallas, Texas 75202-2733
(214) 665-8131
E-Mail: Little.Bill@epa.gov

The Administrative Record file for the Wilcox Refinery site will be available for public review at these locations:

BRISTOW PUBLIC LIBRARY

111 West 7th Avenue
Bristow, Oklahoma 74010
(918) 367-6562
Mon. through Thurs. 9:00 am - 6:00 pm
Sat. 9:00 am – 1:00 pm
Closed Friday and Sunday

OKLAHOMA DEPARTMENT OF ENVIRONMENTAL QUALITY:

Central Records
707 N. Robinson – 2nd Floor
Oklahoma City, Oklahoma 73102
(405) 702-1188
E-Mail: centralrecords@deq.ok.gov
Mon. through Fri. 8:00 am – 4:30 pm

U.S. EPA REGION 6
7th Floor Library
1445 Ross Avenue, Suite 12D13
Dallas, Texas 75202-2733
(214) 665-2792 or 1-800-533-3508 (Toll Free)
Mon. through Fri. 7:30 am – 4:30 pm

ON THE INTERNET:

DEQ HOMPAGE, LAND PROTECTION DIVISION
www.deq.state.ok.us/lpdnew/index.htm
(Scroll down to Wilcox Refinery)

U.S. EPA HOMPAGE:

www.epa.gov

U.S. EPA SUPERFUND DIVISION:

www.epa.gov/superfund/search-superfund-sites-where-you-live



This publication is issued by the Oklahoma Department of Environmental Quality authorized by Scott A. Thompson, Executive Director. Copies have been prepared at a cost of \$0.1035 each. Copies have been deposited with the Publications Clearinghouse of the Oklahoma Department of Libraries. (cmullins/LPD\WilcoxSuperfundSite) 5/2015