



Community Advisory Group Informational Meeting

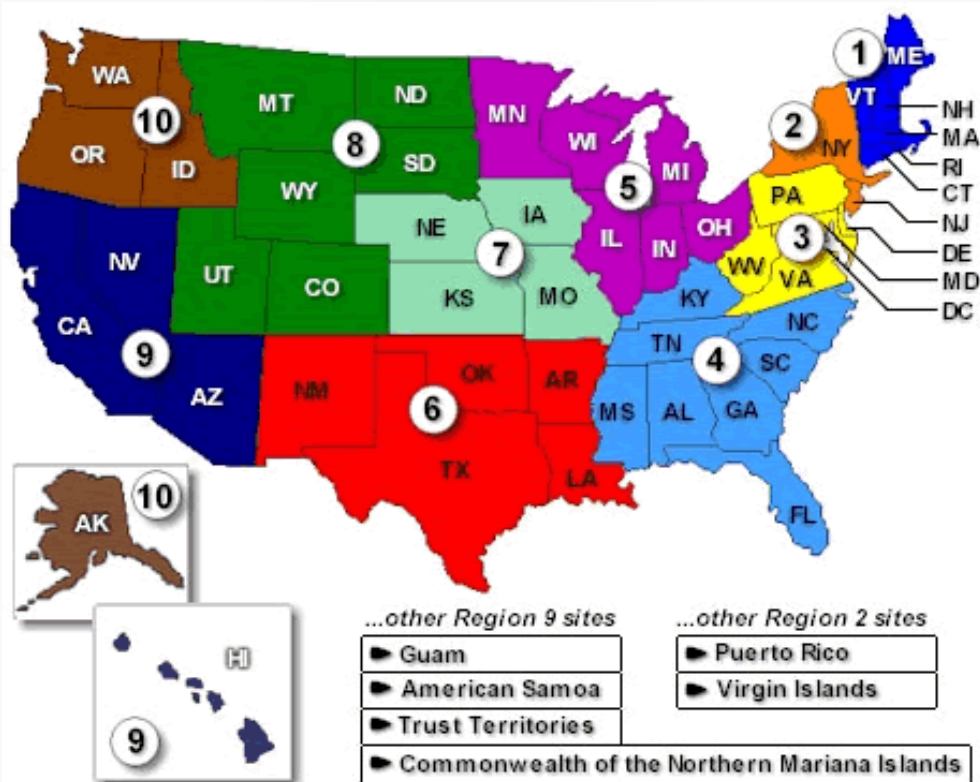
Kent County District Library
Plainfield Township Branch
April 18, 2019

Agenda



- Introduction – EPA & Community Engagement
- What is a CAG?
- Elements and Membership of CAGs
- Status of the Wolverine CAG
- Next Steps

Who We Are



U.S. Environmental Protection Agency Region 5 Superfund Program

- Serving Illinois, Indiana, Michigan, Minnesota, Ohio, Wisconsin and 35 Tribes
- Regional Offices
Chicago, IL

Community Involvement Coordinators (CICs)

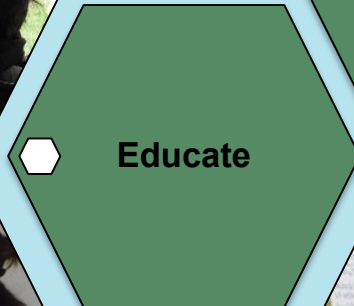
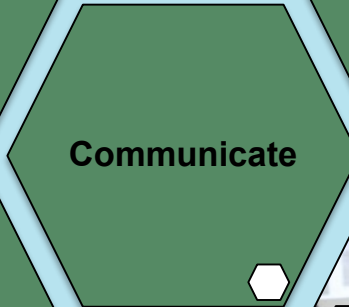
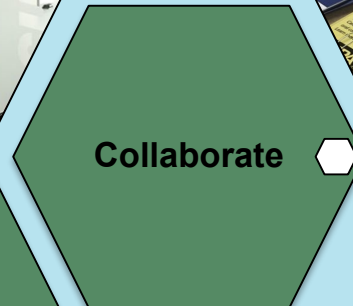
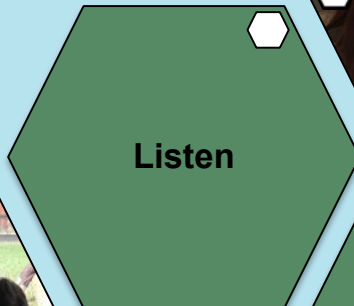


- assigned to specific projects to assist communities in their interaction with EPA
- ensure technical staff is aware of issues that concern the public in relation to the work EPA is doing
- as liaisons between technical project managers and the community, CICs provide opportunities for two-way communication throughout the life of a project.





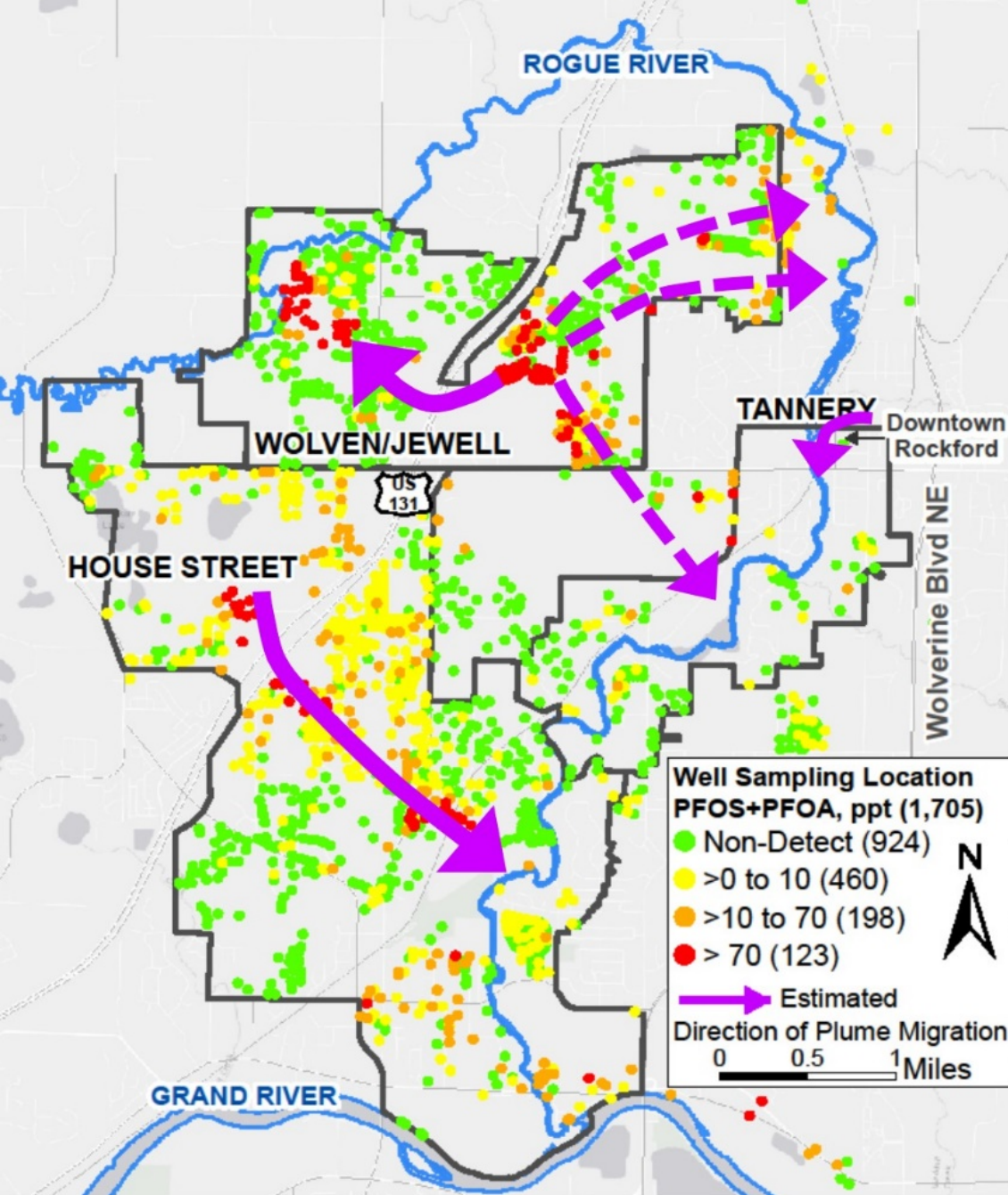
On the Ground

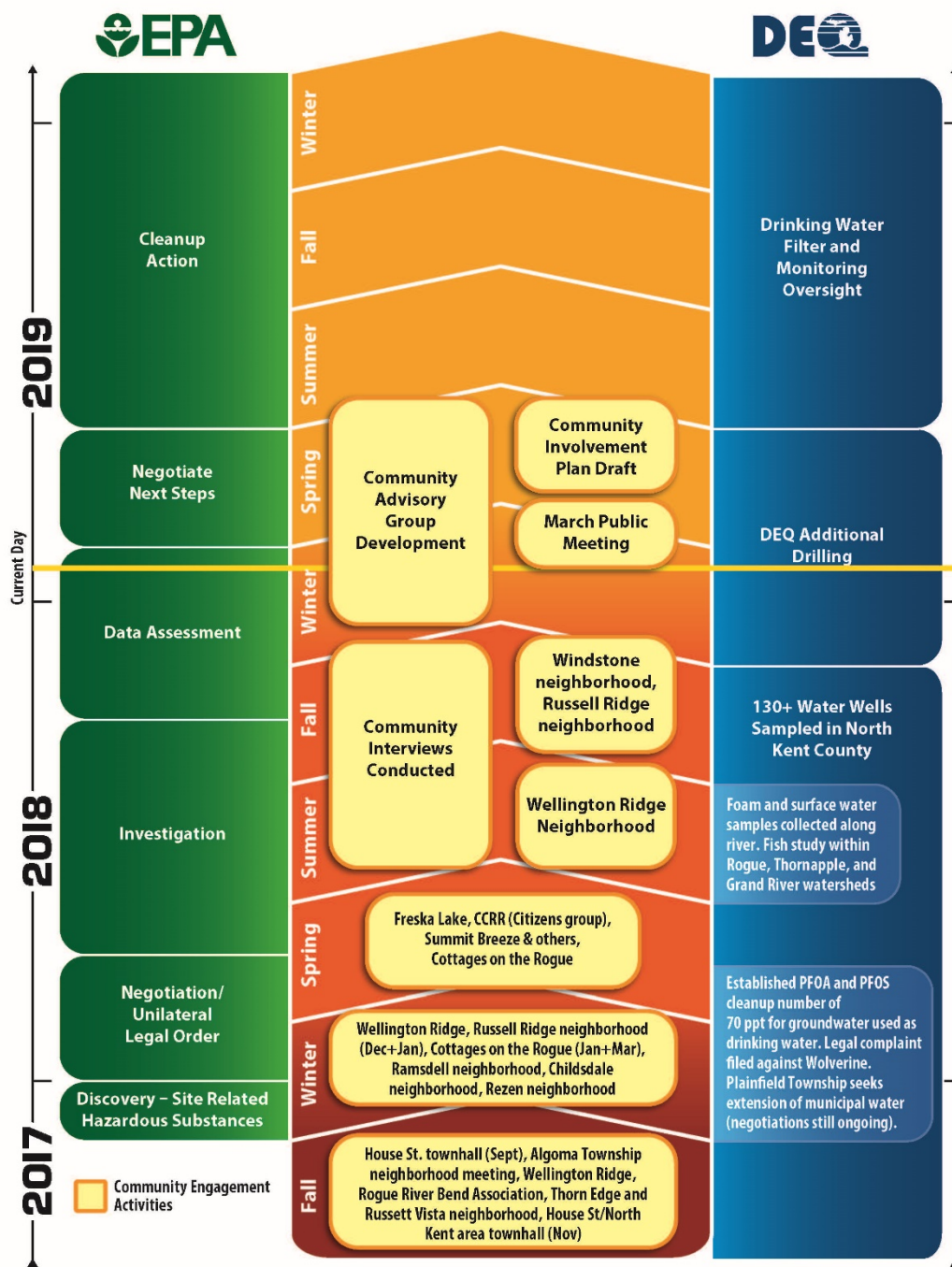




Wolverine World Wide Tannery

- Investigations underway
 - MDEQ leading PFAS investigation
 - EPA investigating metals, VOCs/SVOCs





Why a CAG?



IMPROVED ACCESS: People affected by Superfund sites have a right to know what the Agency is doing in their community and to have a say in the decision-making process.

STRONGER VOICE: An effective CAG is a very powerful way to give voice to the entire community.

DEEPER UNDERSTANDING: CAGs bring people together and promote understanding of a range of perspectives.

BETTER INPUT: CAGs provide EPA in-depth community understanding and input and

COMMON GROUND: CAGs help identify where the community holds common concerns and builds consensus community recommendations.

CAGs

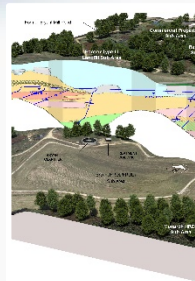


...are designed as a mechanism for all affected and interested parties in a community to have a voice and actively participate in the Superfund process

What does a CAG do?



Hold regular, typically monthly, meetings.



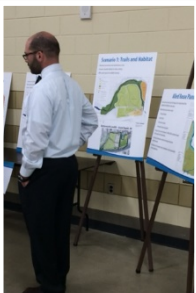
Review technical information about site cleanup and other environmental problems.



Meet with EPA and state to learn about the site and related issues.



Work with EPA and state to solve problems.

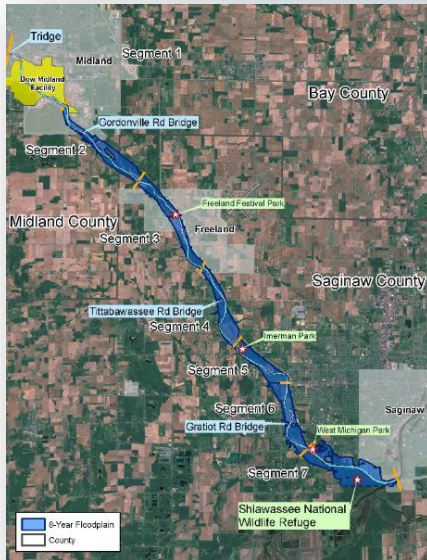


Provide recommendations and advice and ensure that public input reflects the full range of community interests and concerns.



Create a strong connection to the community. Help to communicate issues to the broader community.

Other CAGs in Michigan

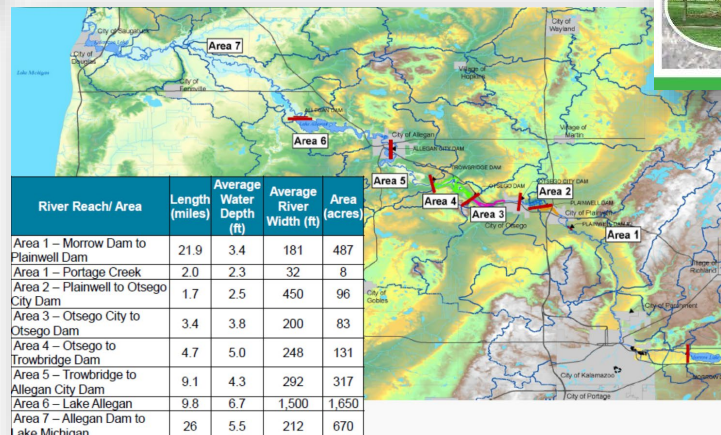


Tittabawassee River, Saginaw River & Bay Site

- Tittabawassee-Saginaw Rivers Contamination CAG
- www.saginawcag.org

Allied Paper/Portage Creek/Kalamazoo River

- TBD



Velsicol Chemical, St. Louis, MI



- Pine River Superfund Citizen Task Force
- www.pinerivercag.org

Basic CAG Facts



SIZE	<ul style="list-style-type: none">• generally 15 to 25 stakeholders
FUNCTION	<ul style="list-style-type: none">• provide affected and interested parties in the community a voice and opportunity to participate in the Superfund process
FREQUENCY	<ul style="list-style-type: none">• meet regularly over the course of the cleanup project, most CAGs meet monthly or bi-monthly.
AFFILIATION	<ul style="list-style-type: none">• CAGs are independent community organizations, they are not formal "EPA" groups.
SUPPORT	<ul style="list-style-type: none">• EPA may provide administrative and facilitation support to help convene and manage the CAG
CAGs ADD TO EPA OUTREACH	<ul style="list-style-type: none">• CAGs do not replace the other EPA public information and outreach activities.

Convening the CAG

A vertical line with four white circles, each containing a small blue dot, is positioned to the left of the four text boxes.

Balanced membership

Include all key interest groups

Fair, open, and transparent process

Community engagement and understanding

Self-Selecting Model



EPA announces the opportunity to form a CAG, the local community identifies (in a fair and open manner) CAG members who they believe represent the diverse interests of their community.

Wolverine CAG Status



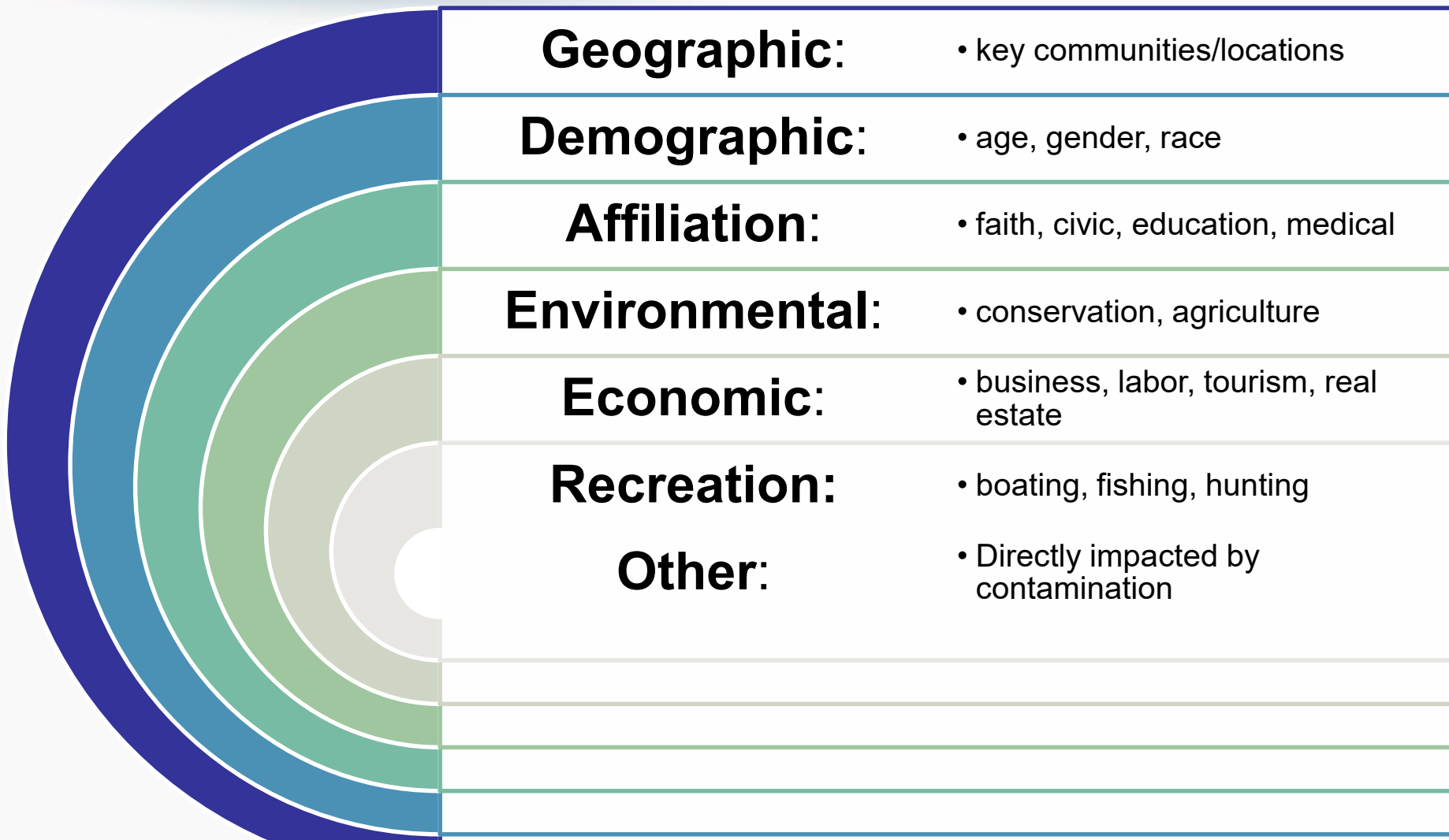
The community has taken the lead

A core group of stakeholders have convened to begin CAG formation

Looking to fill out membership to ensure broad community representation

Applications being sought from interested stakeholders

Balance of Interests



CAG Application



Open to all community stakeholders (government agencies and PRPs may participate as *ex-officio* members)

ID interests, perspectives, and affiliations

Must be willing to commit to monthly activities of the CAG

Next Steps



**Applications for
membership
due by the end
of April**

**Selection
committee
reviews
applications
and identify
CAG members**

**Decisions by
May**

**First CAG
meeting in June**