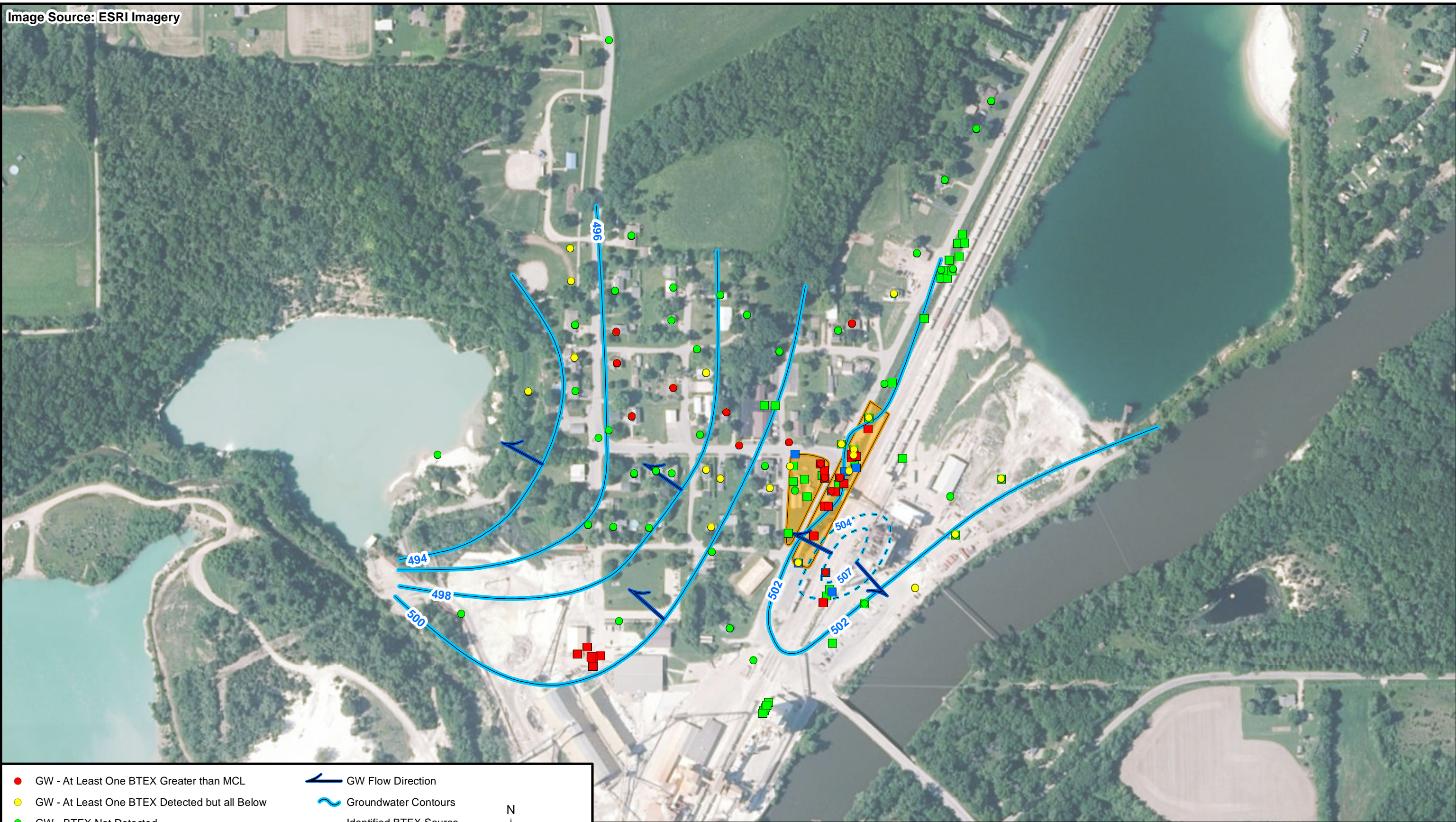


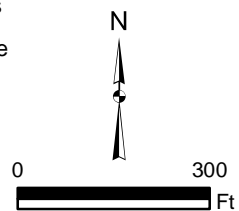
Image Source: ESRI Imagery

FILE:K:\Temp_GIS\US EPA\0000_Wedron\Wedron.mxd 2015_1002.ctb1_Wedron_BTEX_screening_rev20151022.mxd 2:08:09 PM 10/22/2015 BROWNK



- GW - At Least One BTEX Greater than MCL
- GW - At Least One BTEX Detected but all Below
- GW - BTEX Not Detected
- Soil - BTEX Greater than Criteria
- Soil - All Detected BTEX Less than Criteria and Benzene Reporting Limit Greater than Criteria
- Soil - BTEX Not Detected

- GW Flow Direction
- Groundwater Contours
- Identified BTEX Source Areas



Prepared For:
US EPA Region VIII
 Contract No: EP-S8-13-01
 TDD: 0001/1406-08
 20408.012.001.0140.00



Prepared By:
WESTON SOLUTIONS, INC
 300 Plaza Circle; Suite 202
 Mundelein, Illinois 60060

Figure 1
 Soil and Groundwater Exceedance Map
 Wedron Ground Water Site
 Wedron, LaSalle County, Illinois
 Updated: October 22, 2015