

COMMUNITY INVOLVEMENT PLAN

GALEY & LORD SITE
SOCIETY HILL, SOUTH CAROLINA

September 2024



U. S. ENVIRONMENTAL PROTECTION AGENCY
REGION 4

THE U. S. ENVIRONMENTAL PROTECTION AGENCY'S
(EPA) SUPERFUND COMMUNITY INVOLVEMENT
PROGRAM IS COMMITTED TO PROMOTING
COMMUNICATION BETWEEN CITIZENS AND THE
AGENCY. ACTIVE PUBLIC INVOLVEMENT IS CRUCIAL
TO THE SUCCESS OF ANY PUBLIC PROJECT.

EPA'S COMMUNITY INVOLVEMENT ACTIVITIES AT THE
GALEY & LORD SUPERFUND SITE

ARE DESIGNED TO

INFORM THE PUBLIC OF THE NATURE OF THE ENVIRONMENTAL ISSUES
ASSOCIATED WITH THE SITE, INVOLVE THE PUBLIC IN THE DECISION-MAKING
PROCESS THAT WILL AFFECT THEM,
INVOLVE THE PUBLIC IN THE RESPONSES UNDER CONSIDERATION TO REMEDY
THESE ISSUES, AND
INFORM THE PUBLIC OF THE PROGRESS BEING MADE TO IMPLEMENT THE REMEDY.

Table of Contents

Section		Page
1.0	Overview of the Community Involvement Plan.....	4
2.0	Capsule Site Description	4
2.1	Site History.....	4
2.2	Site Description/Location	4
	Map of Site	4
2.3	Site Inspections and Cleanup Activities	5
3.0	Community Background	5
3.1	Community Profile.....	5
3.2	History of Community Involvement	6
3.3	Key Community Concerns.....	6
4.0	EPA’s Community Involvement Program	6
4.1	The Plan.....	7
4.2	Time Frame Summary for Community Involvement Activities.....	7
Appendices:		
A	EPA Regional Contacts.....	8
B	Local Officials.....	9
C	State Officials.....	10
D	Federal Elected Officials.....	11
E	Media Contacts.....	12
F	Repository Locations	13
G	Glossary.....	14
	Glossary (Continue)	15
H	Acronym List	16

Section 1.0

Overview of the Community Involvement Plan

EPA developed this Community Involvement Plan to facilitate two-way communication between the community surrounding the Galey & Lord Site and EPA and to encourage community involvement in site activities. EPA will utilize the community involvement activities outlined in this plan to ensure that residents are continuously informed and provided opportunities to be involved.

This Community Involvement Plan addresses the Galey & Lord Site's relationship to the community and EPA (Section 2.0), provides a background of the community (Section 3.0), presents EPA's community involvement program (Section 4.0), and provides a listing of resources available (Appendices). EPA drew upon several information sources to develop this plan, including community interviews and site files. EPA's Regional Office will oversee the implementation of the community involvement activities outlined in this Plan.

Section 2.0

Capsule Site Description

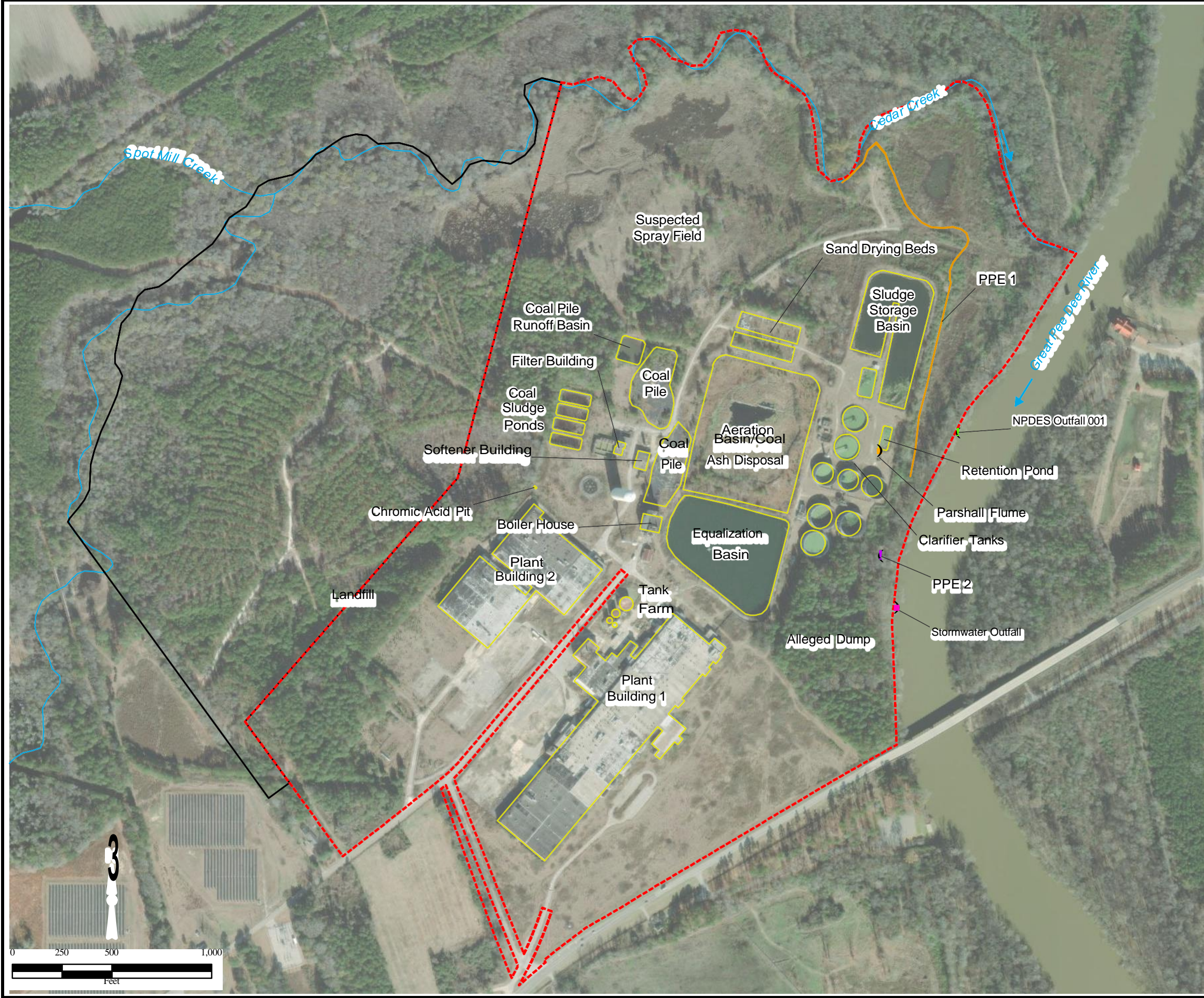
2.1 Site History

The former Galey and Lord facility is a former textile mill located at 670 North Main Street in Society Hill, Darlington County, SC. The Galey and Lord facility operated as a textile mill, manufacturing woven cotton and cotton/polyester blended apparel fabrics that involved spinning, weaving, and dyeing from 1966 until 2016. The Site has conducted wastewater operations since the facility was constructed in 1965. Initially, waste treatment consisted of a single 30-million-gallon oxidation pond discharging to the Pee Dee River. In 1973, the water treatment plant (WTP) was modified to an activated sludge treatment facility with addition of aeration, clarifiers, digester, polishing pond, chlorine contact chamber, and parshall flume effluent metering station. Since closing, the Site has been extensively salvaged causing the spread of asbestos and damaging groundwater remediation equipment. The WTP is in a deteriorating state with leaking pipes and pumps along with rusting and leaking tanks. Approximately 300 drums and 100 totes, cylinders, and other containers were note abandoned throughout the buildings by EPA during their Removal Assessment (notables were caustics, acids, and oxidizers). The EPA is in the process of conducting a time-critical removal action for the abandoned chemicals.

2.2 Site Description/Location

The Site is located at 670 North Main Street, Society Hill, Darlington County, South Carolina. The geographical coordinates for the Site are latitudes 34.525036° longitude - 79.837463°. The 236-acre site is bordered to the east by the Great Pee Dee River, to the north by Cedar Creek, to the west by undeveloped land and residential property, and to the south by North Main Street.

Figure 2
Site Layout



Legend

- Former NPDES Outfall
- Stormwater Outfall
- Parshall Flume
- Probable Point of Entry (PPE) 2
- Probable Point of Entry (PPE) 1
- Surface Water Course
- Site Feature
- Former BII Liquidation, Inc, Parcel Formally known as Burlington Industries Inc. Prior to Sale in November 2003
- Galey & Lord Plant Parcel

Notes:
 NPDES=National Pollutant Discharge Elimination System
 UFP-QAPP=Uniform Federal Policy Quality Assurance Project Plan
 WWTP=wastewater treatment plant

\\srv-gst-01\HGLGIS\Galey_Lord_E2415X\CSM\
 (02)Site_Layout.mxd
 1/30/2024 TH
 Source: HGL, Tetra Tech, Darlington County Tax Assessor's Office
 ArcGIS Online Imagery



2.3 Site Inspections and Cleanup Activities

This Site is a defunct and abandoned former textile dye and finishing facility located on approximately 236 acres. The Site contains two buildings (Plant I and Plant II), a boiler house, coal runoff pond, a water treatment plant, a wastewater treatment plant (WWTP) includes a 20 million gallon (MG) lagoon, three equalization tanks (2MG each), three aeration tanks (2.56MG each), a 17,200 gal flash mix tank, a 107,700-gal flocculation tank, two 850,000-gal clarifiers, a 0.2-acre digester and a 3.1-acre sludge storage pond. All water tanks, treatment vessels and impoundments in the WWTP remain full or nearly full.

Historic contamination at the Site identified by the South Carolina Department of Health and Environment Control (DHEC) includes: a chronic acid pit, two small landfills and groundwater contamination. A pump and treat system that had been installed to address groundwater contamination ceased operating when the facility closed in 2016.

DHEC visited the site in October 2016 and several tanks, drums and totes which were full or partially full. DHEC again visited the Site in 2017 and observed active scrapping and demolition activities. DHEC also documented that the tanks, drums, and totes had not been fully addressed. Based on the presence of these containers and hazardous materials, DHEC requested that EPA Region 4 conduct a removal site evaluation.

To date, the proposed removal action will consist of two phases. Phase I will focus on neutralization and disposal of approximately 500,000 gallons of caustic liquids stored in several above ground storage tanks (AST)s, hazard characterization of remaining containers and a mercury assessment and removal in cafeteria room. Phase II will focus on consolidation of wastes stored in various containers scattered throughout multiple labs and storage rooms, characterizations, transportation, and disposal of consolidated waste at an EPA-approved facility and disposal of the contents in an aeration tank if needed.

Section 3.0 Community Background

3.1 Community Profile

Society Hill is the oldest community in Darlington County. As of the census 2024, there were 700 people, 269 households, and 203 families residing in the town. The population density was 320.4 people per square mile (124.0/km²). There were 317 housing units at an average density of 145.1 per square mile (56.1/km²). The racial makeup of the town was 44.43% White, 54.00% African American, 0.14% Native American, 0.86% from other races, and 0.57% from two or more races. Hispanic or Latino of any race were 0.57% of the population.

There were 269 households out of which 24.5% had children under the age of 18 living with them, 52.0% were married couples living together, 19.0% had a female householder with no husband present, and 24.5% were non-families. 21.6% of all households were made up of individuals and 7.8% had someone living alone who was 65 years of age or older. The average household size was 2.60 and the average family size was 3.03. In the town, the population was

spread out with 22.0% under the age of 18, 9.6% from 18 to 24, 24.3% from 25 to 44, 29.3% from 45 to 64, and 14.9% who were 65 years of age or older. The median age was 40 years. For every 100 females, there were 89.7 males. For every 100 females aged 18 and over, there were 90.9 males. The median income for a household in the town was \$30,057, and the median income for a family was \$37,875. Males had a median income of \$25,662 versus \$18,516 for females. The per capita income for the town was \$15,005. About 13.3% of families and 14.5% of the population were below the poverty line, including 26.9% of those under age 18 and 6.5% of those age 65 or over.

3.2 History of Community Involvement

The Community Involvement Coordinators Donnica Wiley, LaTonya Spencer-Harvey, and Brenda Bonner conducted community interviews on January 27, 2024, and September 27, 2024, and informed the residents of the clean-up process moving forward.

3.3 Key Community Concerns

The Community Involvement Coordinators Donnica Wiley, Brenda Bonner, and LaTonya Spencer-Harvey received the following feedback to the interview questions:

- Glad to see the progress EPA has made cleaning up the Site
- Would like to see the Site maintained and secured 24 hours a day
- Plant closure was economically devastating to the town
- Jobs are gone due to the closure of the plant
- Community complained about appearance and vandalism occurring at the Site
- Communication-Fact Sheets and community meetings were the means of communication requested by the residents interviewed
- Thursdays at 6pm are good nights to meet at the Society Hill Community Center

Section 4.0

EPA's Community Involvement Program

The overall goal of EPA's community involvement program is to promote two-way communication between citizens and the EPA and to provide opportunities for meaningful and active involvement by the community in the cleanup process. EPA will implement the community involvement activities described below. The following plan is based on the results of the community interviews described earlier; it addresses each issue that was identified as being important to the community.

4.1 The Plan

Designate an EPA Community Involvement Coordinator(s) (CIC)

- **Objective:** Provide a primary liaison between Galey & Lord Site, the community and the EPA that ensures prompt, accurate and safe responses and disseminates information about the site as appropriate. In those instances where EPA’s CIC's may be unable to provide adequate information (such as on technical issues), the CIC's will direct inquiries to the appropriate EPA contact.
- **Method:** EPA’s CIC's will handle site inquiries and serve as a point of contact for community members. The CICs are appointed by region 4 Headquarters. Donnica Wiley, LaTonya Spencer-Harvey and Brenda Bonner are the EPA CICs assigned to the site. They will work closely with the EPA On Scene Coordinator, Chris Jones.
- **Timing:** The CICs will be available until the site is officially closed.

Information Repositories.

- In compliance with the Paper Reduction Act, EPA maintains electronic files of Site-related information. These digital documents are accessible at: Society Hill Library, 114 Carrigan St. Society Hill, SC 29593, so patrons may use public computers if needed to access information regarding the Site.

4.2 Time Frame Summary for Community Involvement Activities

ACTIVITY	TIME FRAME
Designate an EPA Community Involvement Coordinator (CIC)	Donnica Wiley, LaTonya Spencer-Harvey, Brenda Bonner Established at the start of the site
Prepare and distribute site fact sheets and technical summaries	Distribute as needed
Involve students, parents, teachers through area schools	As needed
Provide a toll-free "800 number" for the community to contact EPA	Currently in operation
Establish and maintain Information Repositories	Established, update as needed
Hold public meetings	As needed
Make informal visits to community	As needed
Solicit comments during a Public Comment Period	As needed and required
Prepare and issue a Responsiveness Summary	Following public comment periods
Revise the Community Involvement Plan (CIP)	As needed, at least every 5 years

Appendix A
EPA Regional Contacts

Chris Jones
On-Scene Coordinator
Tel: 404-971-9838
E-mail: jones.christopher@epa.gov

Donnica Wiley
Community Involvement Coordinator
Tel: 404-562-9073
E-mail: wiley.donnica@epa.gov

LaTonya Spencer Harvey
Community Involvement Coordinator
Tel: 404-562-8463
E-mail: Spencer.Latonya@epa.gov

Brenda Bonner
Community Involvement Coordinator
Tel: 678-350-4379
E-mail: bonner.brenda@epa.gov

**Appendix B
Local Officials**

Town of Society Hill

280 S Main St.
Society Hill, SC 29593-8901
Phone: 843.378.4681
Fax:843.378.0083

Mayor

Dwayne A. Duke

Clerk/Treasurer

Brenda Nettles

City Council Members

Thomas Bradshaw

Melissa Burch

Denise Gale Douglas

Kevin A. Long

Lead Attorney

John Ervin III

Police Chief

Renea Worden

Chief Judge

David Moyd

Fire Chief

Darlington County Fire District

Station 11

282 S. Main Street

Society Hill, SC 29593

Appendix C
State Officials
State House
1100 Gervais Street
Columbia, SC 29201
803-734-2100



Governor

The Honorable Henry McMaster

The First Lady of South Carolina

Peggy McMaster

Lieutenant Governor

Pamela Evette

Department of Administration

www.admin.sc.gov

Marcia Adams, Director

803.734.8120

Department of Aging

www.aging.sc.gov

Connie Munn, Director

803.734.9900

Department of Alcohol and Other Drug Abuse Services

www.daodas.state.sc.us

Sara Goldsby, Director

803.896.5555

Department of Commerce

www.sccommerce.com

Harry M. Lightsey, III, Secretary

803.737.0400

Department of Corrections

www.doc.sc.gov

Bryan P. Stirling, Director

803.896.8500

Department of Employment and Workforce

www.dew.sc.gov

William Floyd,

Director

803.737.2400

Department of Health and Human Services

www.scdhhs.gov

Robert M. Kerr,

Director (Retiring

11/24)

803.898.2500

Department of Insurance

www.doi.sc.gov

Michael Wise,

Director

803.737.6160

Department of Juvenile Justice

www.state.sc.us/djj

Eden Hendrick, Director

803.896.9749

Department of Labor, Licensing and Regulation

www.llr.state.sc.us

Emily H. Farr, Director

803.896.4300

Department of Motor Vehicles

www.scdmvonline.com

Kevin A. Shwedo, Director

803.896.5000

Department of Parks, Recreation and Tourism

www.scprt.com

Duane N. Parrish, Director

803.734.0166

Department of Probation, Parole and Pardon Services

www.dppps.sc.gov

Jodi Gallman (Acting Director)

803.734.9220

Appendix D
Federal Elected Officials

U.S. Senate

Perry Gustafson
610 Gressette Bldg.
Columbia, SC 29201
803- 212-6040

U.S. Senate

Gerald Malloy
513 Gressette Bldg.
Columbia 29201
803-212-6172

U.S. House of Representatives

Patricia Moore "Pat" Henegan
333B Blatt Bldg.
Columbia, SC 29201
803-212-6896

U.S. House of Representatives

Richard L. "Richie" Yow

327C Blatt Bldg.
Columbia, SC 29201
803-212-6949

Appendix E Media Contacts

Television Stations:

WIS News 10

24-hour phone:

803-799-1010

Fax: 803-758-1278

Email: countonwis@wistv.com

WBTW News13

101 McDonald Court

Myrtle Beach, SC 29588

Main Phone: 843.293.1301

Newsroom: 843.294.8348

Sales: 843.294.8389

ABC 15 News

10 University Boulevard

Conway, S.C. 29526

Abc15news@wpd.com

Phone: 843-487-3001

WFXB FOX 43

3364 Huger Street

Myrtle Beach, SC 29577

Phone: (843) 828-4300

Fax: (843) 828-4343

Radio Stations:

WEBK-FM 91.1 MHz

Phone: 802-775-7500

Fax: 802-775-7555

WDAR-FM 105.5 MHz

"105.5 The Beat"

Phone: 843-667-4600

Fax: 843-673-7390

Newspapers:

News and Press

P.O. Box 513

Darlington, SC 29532

Phone: 843-393-3811

Fax: 843-393-6811

editor@newsandpress.net

Darlington County Newspapers

204 Hewitt Street,

Darlington, SC 29532

843-398-4710

Hartsville News Journal

312 Railroad Ave.

Florence, SC 29506

Phone: 843-332-0858

Fax: 843-917-3502

Appendix F Repository Locations

In compliance with the Paper Reduction Act, EPA maintains electronic files of Site-related information. These digital documents are accessible at:

Society Hill Library
114 Carrigan Street
Society Hill, SC 29593

so that patrons may use public computers if needed to access information regarding the Site.

Appendix G Glossary

Administrative Record: All documents which EPA considered or relied on in selecting the response action at a Superfund site, culminating in the record of decision for remedial action or, an action memorandum for removal actions, usually placed in the information repository near the Site.

Aquifer: A body of permeable rock that can contain or transmit water.

Cleanup: Actions taken to correct a release or threatened release of hazardous substances that could affect public health and/or the environment.

Comprehensive Environmental Response, Compensation and Liability Act (CERCLA): Also known as **Superfund**, is a federal law passed in 1980 and modified in 1986 by the Superfund Amendment and Reauthorization Act (SARA); the act created a trust fund, to investigate and cleanup abandoned or uncontrolled hazardous waste sites. The law authorizes the federal government to respond directly to releases of hazardous substances that may endanger public health or the environment. EPA is responsible for managing the Superfund.

Explanation of Significant Difference: Documents a significant change to a selected remedy contained in a Record of Decision.

Feasibility Study: Study conducted after the Remedial Investigation to determine what alternatives or technologies could be applicable to the site-specific contamination.

Free Product: Petroleum product floating on top of groundwater.

Groundwater: The supply of fresh water found beneath the Earth's surface (usually aquifers) which is often used for supplying wells and springs.

Groundwater Plume: A volume of contaminated groundwater that extends downward and outward from a specific source; the shape and movement of the mass of the contaminated water is affected by the local geology, materials present in the plume, and the flow characteristics of the area groundwater.

Information Repository: A file that contains accurate, up-to-date documents on a Superfund site. The file is usually located in a public building (school, library, or city hall) convenient for residents.

Institutional Controls: Restriction that prevents the owner inappropriately developing the property. The restriction could be implemented as a "deed restriction" and is designed to prevent harm to workers or potential residential development.

Light Non-Aqueous Phase Liquids: Are typically liquids which have densities less than that of water and are found on top of the water.

National Priorities List: The list of hazardous waste sites in the United States eligible for long-term remedial action (cleanup) financed under the federal Superfund program.

Per Capita Income: Measure of the average income earned per person in a given area in a specified year. It is calculated by dividing the area's total income by its total population.

Plume: Volume of groundwater with contaminant concentrations.

Preferred Alternative: EPA develops and evaluates ways to best cleanup contamination at a site. The preferred alternative is selected after comparing all alternatives to nine established Superfund criteria and requesting community input into the selection process.

Proposed Plan: A Superfund public participation fact sheet which summarizes cleanup alternatives, the rationale for their selection, and presents the best method for cleanup (preferred alternative) for public comment.

Public Comment Period: The time allowed for the public to express its views and concerns regarding an action by EPA (e.g. a Federal Register Notice of proposed rulemaking, a public notice of a draft permit, or a Notice of Intent to Deny).

Appendix G

Glossary

(Continue)

Record of Decision (ROD): A public document describing EPA's rationale for selection of a Superfund cleanup alternative.

Remedial Investigation/ Feasibility Study (RI/FS): A two-part investigation conducted to fully assess the nature and extent of the release, or threat of release, of hazardous substances, pollutants, or contaminants, and to identify alternatives for clean-up. The Remedial Investigation gathers the necessary data to support the corresponding Feasibility Study.

Remedial Action - Remedial action (RA) follows the Remedial Design phase and involves the actual construction or implementation stage of the cleanup.

Remedial Design: Remedial design is the phase in the Superfund site cleanup process in which the technical specifications for cleanup remedies and technologies are developed.

Remedy: Long-term action that stops or substantially reduces a release or threat of a release of hazardous substances.

Responsiveness Summary: A summary of oral and written comments received by EPA during a comment period on key EPA documents, and EPA's responses to those comments. The responsiveness summary is a key part of the ROD, highlighting community concerns for EPA decision-makers.

Superfund: The program operated under the legislative authority of CERCLA and administered by the EPA in cooperation with the State to carry out long-term removal and remedial activities.

Appendix H

Acronym List

AOC	Administrative Order on Consent
BCEQCB	Broward County Environmental Quality Control Board
CERCLA	Comprehensive Environmental Response, Compensation, and Liability Act
CIP	Community Involvement Plant
EPA	United States Environmental Protection Agency
ESD	Explanation of Significant Difference
FDEP	Florida Department of Environmental Protection
HHRA	Human Health Risk Assessment
IAROD	Interim Action Record of Decision
NCP	National Oil and Hazardous Substances Pollution Contingency Plan
LNAPL	Light Non-Aqueous Phase Liquids
NPL	National Priority List
PPC	Petroleum Products Corporation Superfund Site
ROD	Record of Decision
SARA	Superfund Amendment and Reauthorization Act