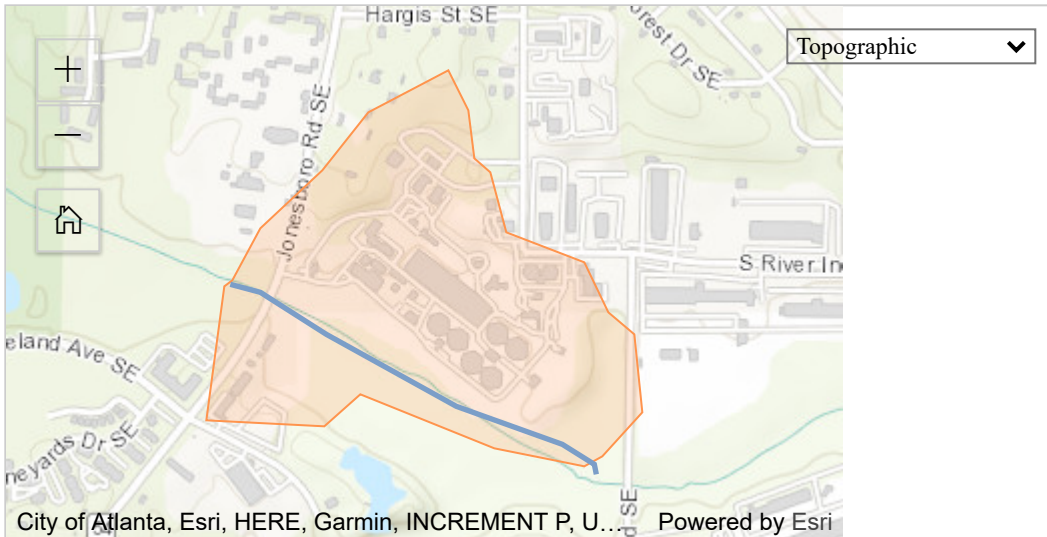




Watershed Report

The Watershed Report provides a variety of stream, catchment and watershed related information from the National Hydrography Dataset Plus (NHDPlus Version 2) and other sources including the extensive collection of StreamCat landscape layers. A catchment is the local area draining directly to the selected stream segment. A watershed is the drainage area extending from the downstream end of the stream segment (outlet) upstream to the headwaters. The map displays the stream segment and catchment.



For the stream segment	Value
Stream Name	South River
Stream Order	2
Stream Level	1
Mean annual flow volume (estimate)	27.85 cfs
Mean annual flow velocity (estimate)	0.99 fps
Stream Length	0.83 km
Stream Time of Travel (estimate)	0.03 days

View catchment and watershed data from either the NHDPlus or StreamCat datasets by clicking on the appropriate tab below:

[NHDPlus Catchment and Watershed Data](#)

[StreamCat Catchment and Watershed Data](#)

For the catchment (local area draining directly to the selected stream segment)

Metrics	Catchment Total
Catchment area measurement	0.39 km ²
Mean annual temperature	16.51 °C
Mean annual precipitation	1,302.95 mm

2011 National Land Cover Dataset	Catchment Total
Open Water (11)	0%
Low Intensity Residential (21)	14.09%
Commercial (23)	26.14%
Deciduous Forest (41)	9.32%
Evergreen Forest (42)	7.50%
Mixed Forest (43)	4.32%
Other	38.64%

For the watershed (drainage area extending from the outlet upstream to the headwaters)

Metrics	Watershed Total
Drainage area measurement	41.22 km ²
Mean annual temperature	16.29 °C
Mean annual precipitation	1,307.57 mm

2011 National Land Cover Dataset	Watershed Total
Open Water (11)	0.12%
Low Intensity Residential (21)	23.43%
Commercial (23)	16.18%
Deciduous Forest (41)	6.20%
Evergreen Forest (42)	6.46%
Mixed Forest (43)	0.98%
Other	46.64%

Download Full Report (.json)

NHDPlus data extracted as of March 2019.
More information on the [NHDPlus dataset](#).

LAST UPDATED ON FEBRUARY 15, 2017