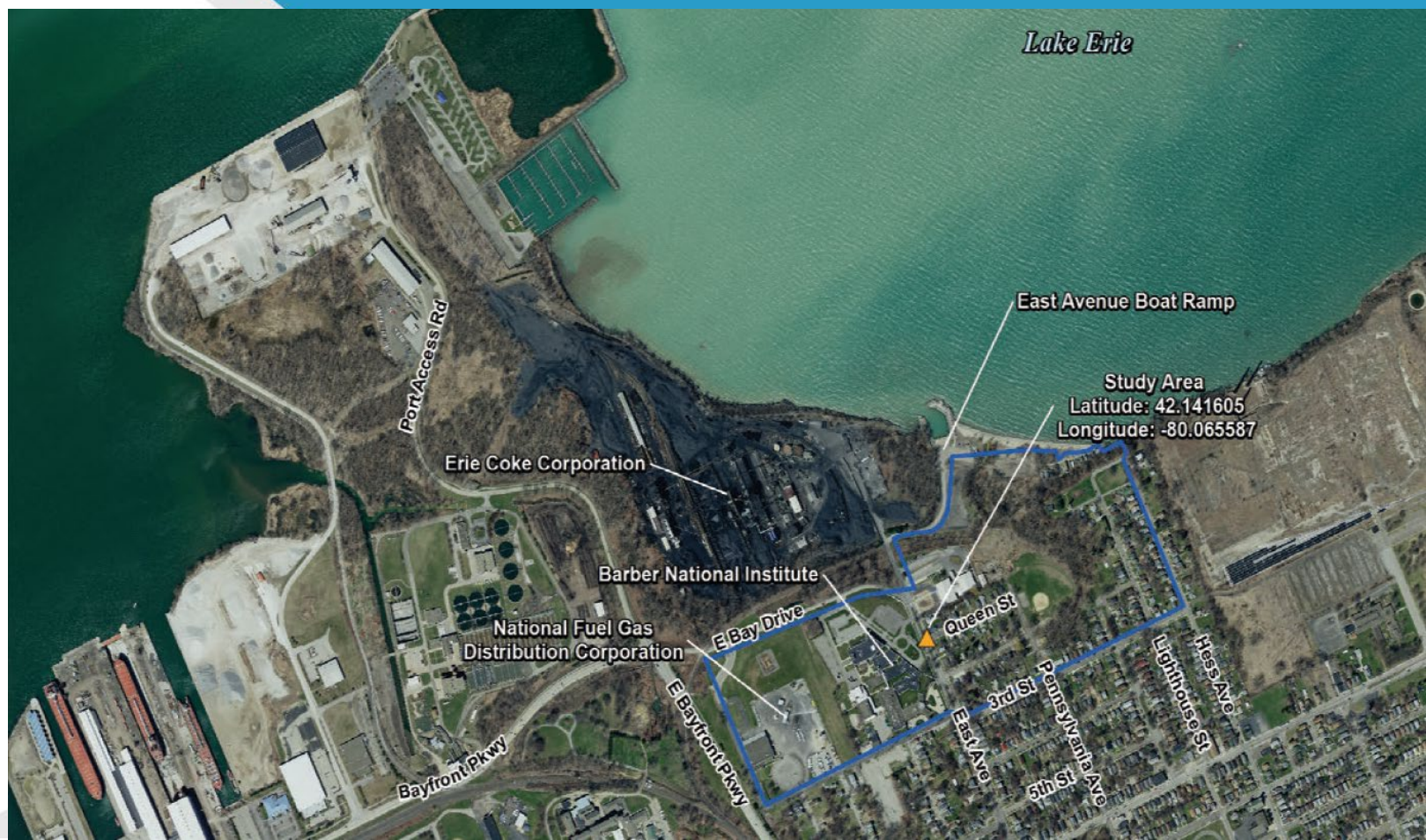




East Avenue Study Area Investigation

Region 3
July 18, 2024



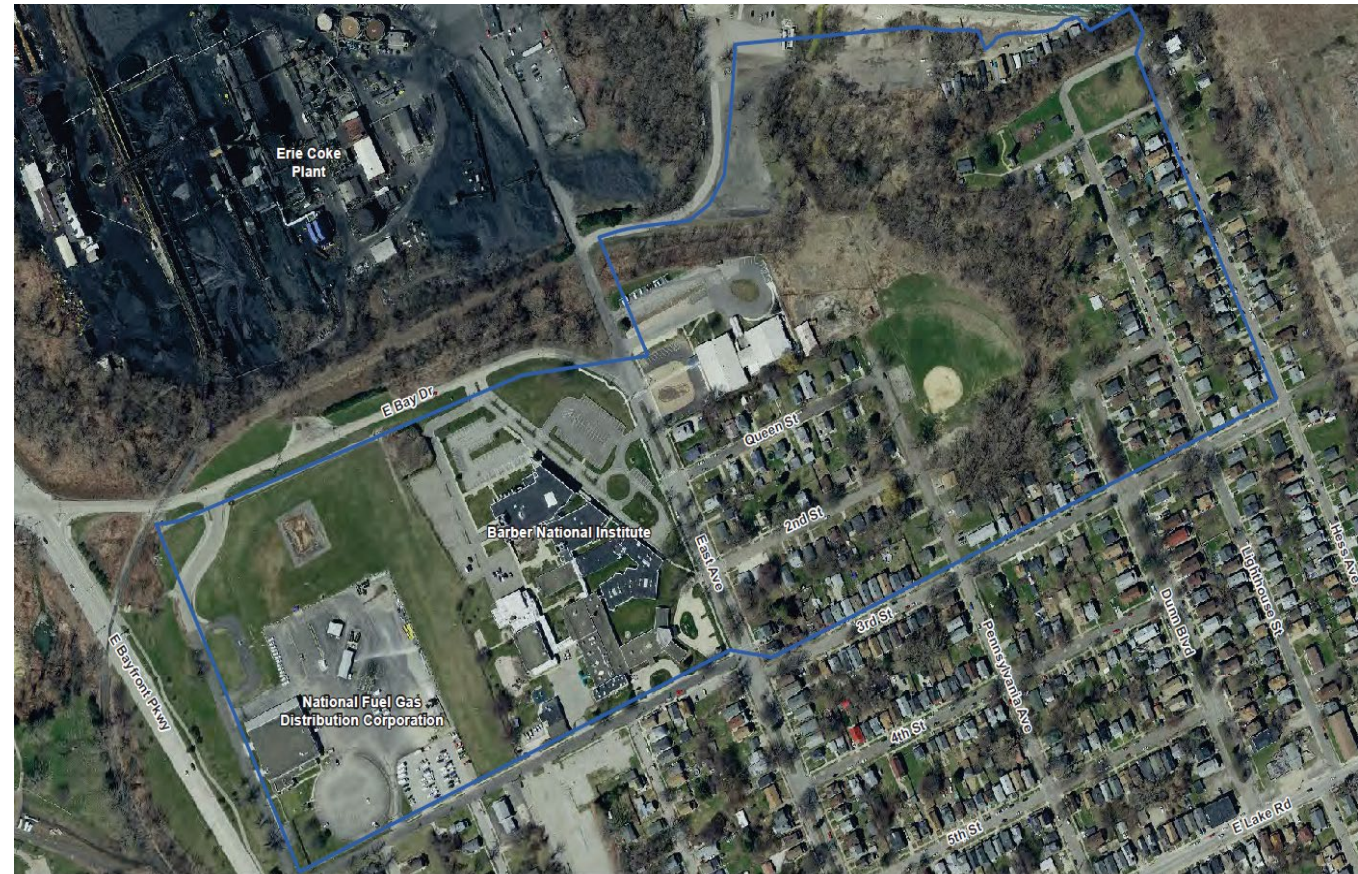
Purpose

- Provide a brief overview of the upcoming EPA investigation
- Provide a demonstration of the equipment and sampling techniques to be used
- Next Steps
- Answer any questions about the EPA investigation

Site profile page: www.epa.gov/EastAveStudyArea

About the Study Area

- Communities adjacent to Erie Coke
- Primary contaminants: inorganics and PAHs in soils.
- Source of contaminants: historic air emissions from Erie Coke
- Acknowledgment of other potential industrial sources nearby



Erie Coke History

- Operated mainly as a coke plant from mid-1800s to 2019.
- Subject to many numerous environmental violations throughout the years.
- In 2019, PADEP requested EPA assistance in removing wastes and contaminated equipment from the plant. Completed activities in 2022.
- PADEP is the lead for conducting investigations at the facility.



Contaminants of Concern - PAHs

- Formed by burning carbon such as coal, oil, gas or wood
- Coal was burned at high temperatures to produce coke.
- ATSDR Fact Sheet on PAHs:



<https://wwwn.cdc.gov/TSP/ToxFAQs/ToxFAQsDetails.aspx?faqid=121&toxid=25>

Contaminants of Concern - Inorganics

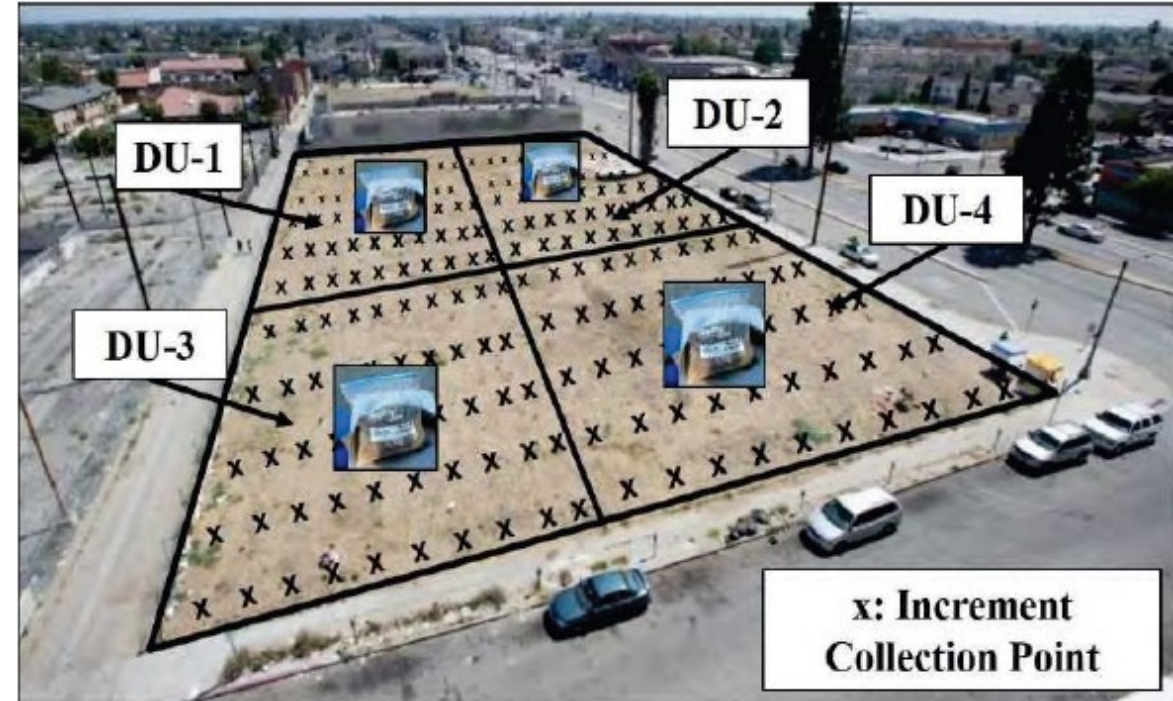
- Found naturally in coal – lead, arsenic, chromium
- Released through stacks during coke production

<https://www.atsdr.cdc.gov/soilshop/soil-gardening-health.html>



EPA Investigation - What to Expect

- Soil sampling will be done in the Study Area boundaries and will also include background locations.
- Sampling will be done with X-ray Fluorescence (XRF) and Incremental Sampling Techniques.



Next Steps - Access to Properties

- Signed access agreements from the owners required for entry onto residential properties.
- Indicated on the sign in sheet if you are interested in having your property sampled.
- EPA will send certified letters to homeowners within the study area with access agreements
- Tell your neighbors.

Next Steps - Sampling

- Late Summer/Early Fall
- 1 to 2 weeks of sampling
- Results back in 3 to 4 months – individual results will not be shared with the public but provided to the property owners.



Next Steps – Follow-up Meeting Early 2025

- Share overall results with the community and what it means
- Determine whether additional sampling or boundary expansion is warranted
- Post new information as it becomes available on EPA webpage:
www.epa.gov/EastAveStudyArea

Contact Information

Lorie Baker (Until 8/1/24)
Remedial Project Manager EPA
Region 3
215-814-3355
Baker.lorie@epa.gov

Jessica Cordasco (After 8/1/24)
Site Assessment Manager
EPA Region 3
215-814-3213
Cordasco.Jessica@epa.gov

Nancy Cruz (*Habla Espanol*)
Community Involvement Coordinator
EPA Region 3
215-814-5518
Cruz.Nancy@epa.gov

Katie Page
Community Involvement Coordinator
EPA Region 3
215-814-2409
Page.katherine@epa.gov

Any Questions?