



DELAWARE SAND & GRAVEL LANDFILL ARMY CREEK LANDFILL Superfund Sites

SEPTEMBER 2019 | New Castle, DE

What is the Delaware Sand & Gravel Landfill Superfund Site?

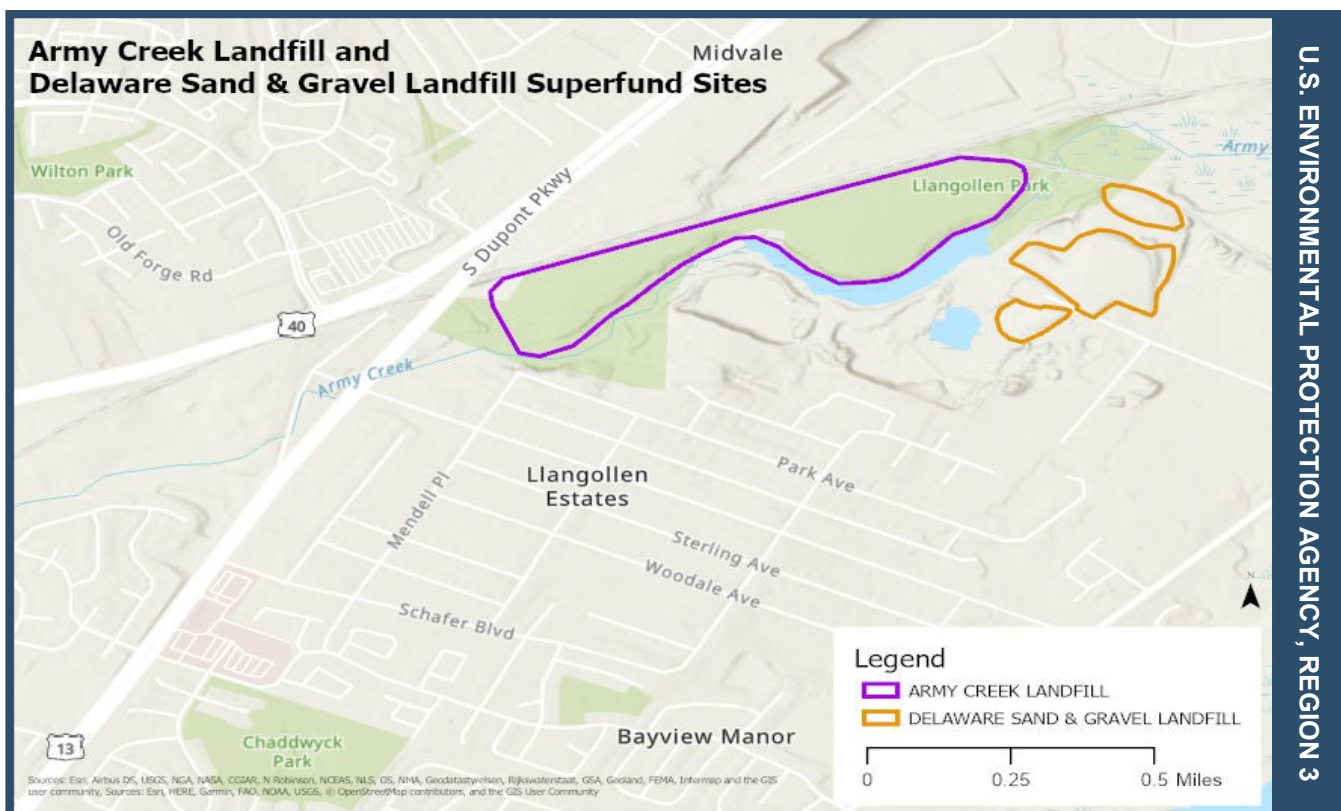
The Delaware Sand & Gravel Landfill Superfund Site (DS&G Site) is a 27-acre site located in New Castle, Delaware. Between 1968 and 1976, the abandoned sand and gravel quarry accepted municipal and industrial wastes including drums of organic and inorganic chemicals. Waste and leachate from the landfill contaminated soil and groundwater with hazardous chemicals.

The DS&G Site was placed on EPA's National Priorities List (NPL) in 1983, making it eligible for federal cleanup funds. Since 1983, several cleanup actions have been implemented at the DS&G Site, including excavation and removal of contaminated soil and drums, installation of an underground barrier wall and landfill caps, extraction of contaminated groundwater, and installation and operation of a bio-venting system that helped soil microbes naturally break down hazardous chemicals.

What is the Army Creek Landfill Superfund Site?

The Army Creek Landfill Superfund Site (ACL Site) is a 50-acre site located in New Castle, Delaware. The ACL Site is an abandoned sand and gravel quarry that accepted municipal and industrial wastes between 1960 and 1968. Waste and leachate from the landfill contaminated the groundwater with hazardous chemicals. In 1971, groundwater contamination was discovered in a residential well located in the nearby Llangollen Estates housing development. A series of groundwater recovery wells was installed on the ACL Site to minimize the movement of chemicals into the local drinking water supply.

The ACL Site was placed on EPA's NPL in 1983. Since 1983, cleanup activities have included the off-site disposal of drums of hazardous chemicals, installation of a landfill cap, and operation of the groundwater recovery wells until 2004 (when this operation was shifted to the DS&G Site). The ACL Site is located immediately across Army Creek to the west of the DS&G Site.



What is going on at the DS&G Site?

In 2017, the PRPs installed a landfill gas collection system in specific locations at the Site to prevent landfill gas from moving into nearby buildings. Also in 2017, EPA selected additional cleanup actions for the DS&G Site, including additional measures to contain contamination at the former drum disposal area and installation of new groundwater recovery wells to capture contaminants. Both of these actions aim to restore groundwater quality in the Upper Potomac Aquifer. In 2018, the potentially responsible parties (PRPs) agreed to design the additional cleanup actions selected by EPA. The PRPs are currently conducting a groundwater investigation at the Site to design the improved recovery well network.

EPA has conducted several five-year reviews (FYRs) of the Site's remedy. These reviews ensure that the remedies put in place continue to protect public health and the environment, and function as intended by Site decision documents. The most recent FYR concluded that the remedy continues to be protective of human health and the environment. The next FYR is scheduled for 2020.

What is going on at the ACL Site?

EPA is currently overseeing a groundwater investigation conducted by the PRPs at the ACL Site. EPA requested this investigation due to increasing concentrations of metals (iron and manganese) in the groundwater, which are known contaminants at the ACL Site. In addition to this investigation, groundwater continues to be monitored semi-annually; the surface water and sediment of Army Creek are monitored every five years. Other operation and maintenance activities are ongoing.

The most recent FYR of the ACL Site's remedy was completed in September 2019. This review concluded that the remedy remains protective of human health and the environment. The next FYR is scheduled for 2024.



Vegetated landfill cap at the DS&G Site



Praying mantis egg cases on the vegetated landfill cap at the ACL Site

FOR MORE INFORMATION

For more information about EPA's work on these sites, please visit:

<https://www.epa.gov/superfund/delawaresandgravel>

<https://www.epa.gov/superfund/armycreek>

If you have questions, contact us:

Debra Rossi, Remedial Project Manager
U.S. Environmental Protection Agency, Region 3
215-814-3228 • rossi.debra@epa.gov

Meg Keegan, Community Involvement Coordinator
U.S. Environmental Protection Agency, Region 3
215-814-5494 • keegan.megan@epa.gov