

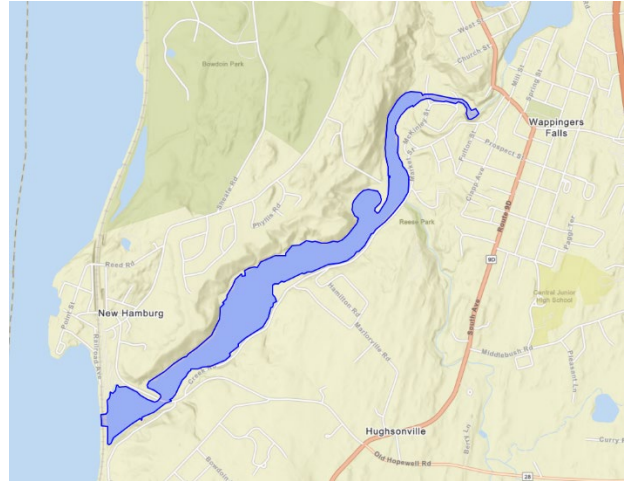


April 2025

Investigating the Site

In January 2025, the U.S. Environmental Protection Agency, or the EPA, finalized its investigation report explaining its investigation of contamination at the Wappinger Creek Superfund site. The EPA collected sediment, soil, groundwater, surface water, air, and fish samples at the site to understand the nature and extent of contamination.

The EPA's **investigation** found that the site's main contaminants include mercury, [methylmercury](#), [lead](#), [arsenic](#), [chromium](#), [cyanide](#), [polycyclic aromatic hydrocarbons, or PAHs](#), including [benzo\(a\)pyrene](#), and [polychlorinated biphenyls, or PCBs](#). These contaminants are significantly more present in the creek than at Wappinger Lake, which is located north of the site. The creek sediment has the highest contamination levels. The agency also found contamination at lower levels in surface water, groundwater, and soil.

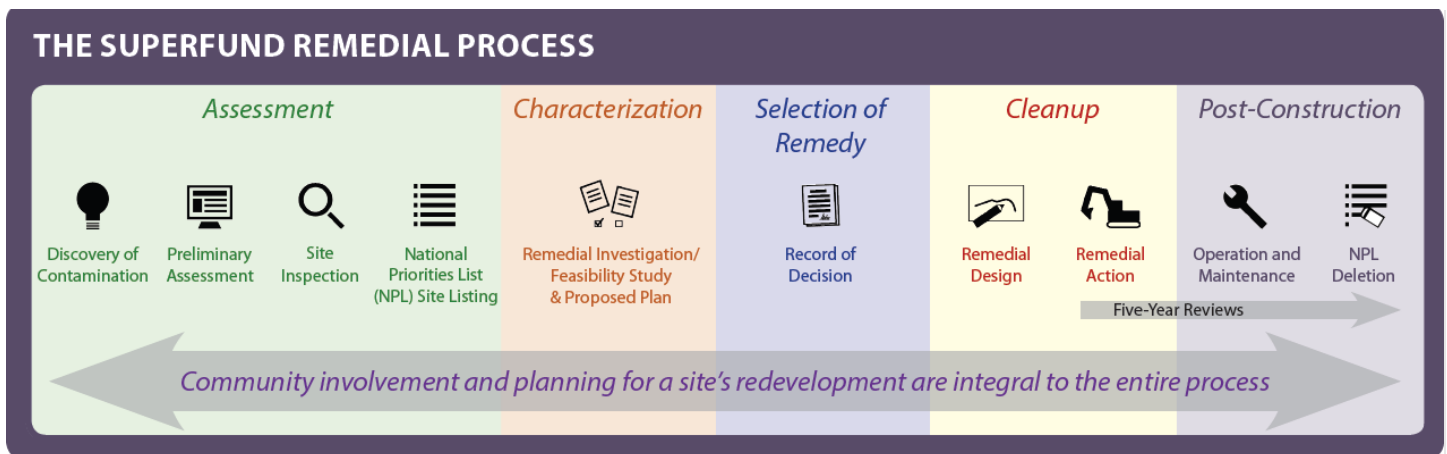


The Wappinger Creek Superfund site is shown as the shaded blue area in the map above.



The EPA found that the fish in the creek are mainly contaminated with methylmercury, PCBs, PAHs, and arsenic. People should not eat the fish in the creek. However, the community can still boat, swim, and participate in catch-and-release fishing.

The EPA is currently conducting a study using the results from the investigation to determine the best possible cleanup methods to address contamination in areas with the highest concern. The EPA aims to complete its study later this year. After the study is done, the EPA will release a proposed cleanup plan for public comment.



Site Background

The Wappinger Creek Superfund site is located in the town of Wappingers Falls, in Poughkeepsie, New York. It begins near the base of Wappingers Falls and ends approximately two miles downstream where the waterbody connects with the Hudson River.

For over 180 years, the creek received discharge waste from various industries including gas plant manufacturers, metal plating facilities, as well as bleaching and textile dyeing operations. Before the EPA's involvement, the New York State Department of Environmental Conservation, or NYSDEC, sampled water and sediment from Wappinger Lake and Wappinger Creek.

This sampling effort was done as part of an investigation at the Three Star Anodizing site, a New York State Superfund site. The NYSDEC's sampling results found lead, chromium, mercury, and PAHs present in the water and sediment.

In October and November 2015, the EPA performed a site assessment and found mercury and benzo(a)pyrene in the sediment of Wappinger Creek. In September 2016, the EPA added the Wappinger Creek site to its National Priorities List to address significant levels of contamination within the creek.

Site Contaminants

To learn more about the main contaminants found at the site, please scan the QR codes below. To scan the codes, you can open up a phone or tablet camera app, hover your device over the code, and click on the link that appears.



Mercury and Methylmercury



Arsenic



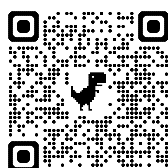
PAHs



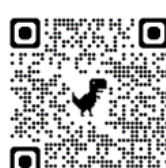
Benzo(a)pyrene



Lead



Chromium



Cyanide



PCBs

EPA Contact Information

Emily Wong
Remedial Project Manager
(212) 637-4303
wong.emily@epa.gov

Olivia Cappo
Community Involvement Coordinator
(212) 637-3532
cappo.olivia@epa.gov

