

Construction of Treatment System

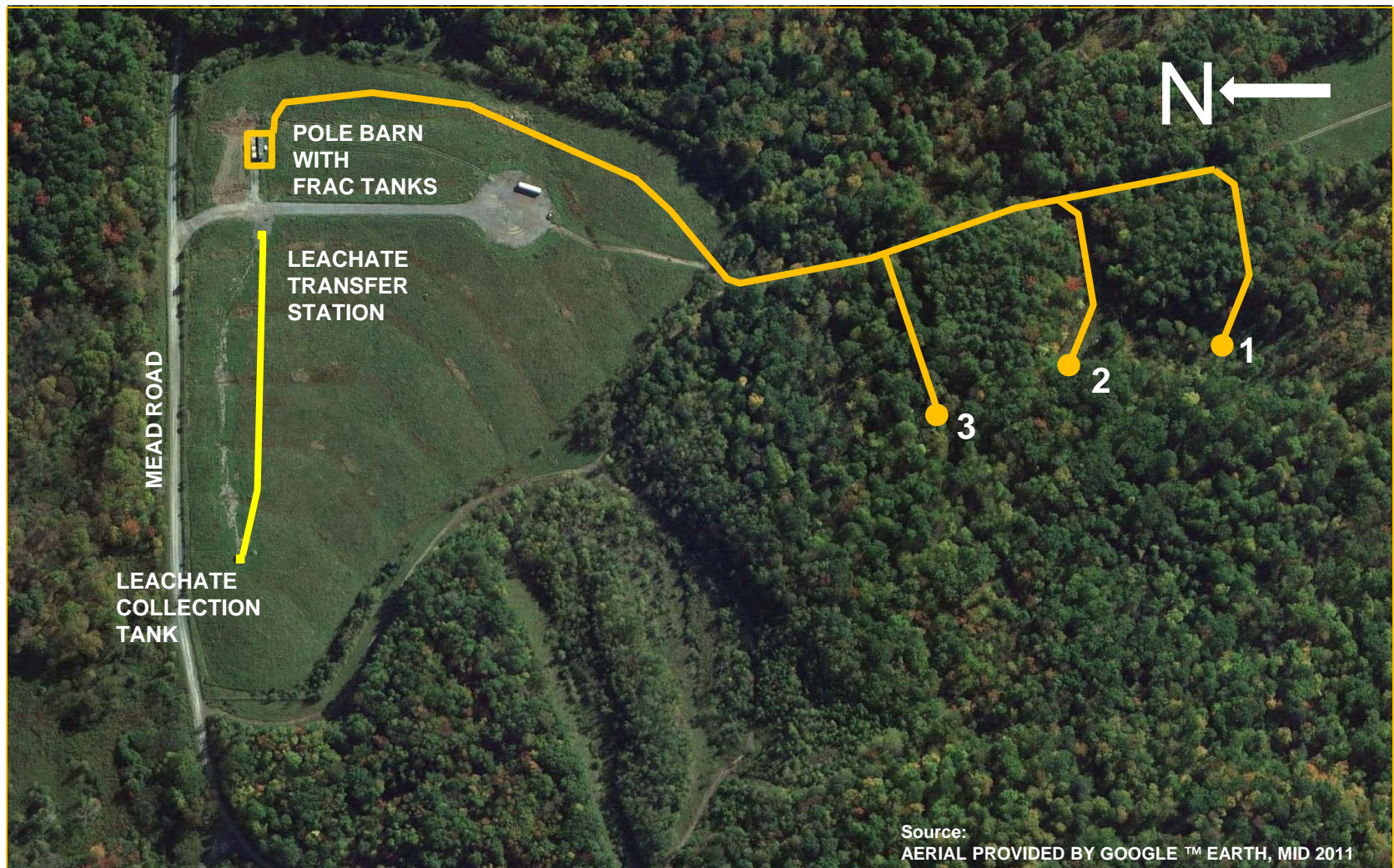
May 16, 2013

Paul Hare

Project Coordinator (GE & SI Group)

**Dewey Loeffel Landfill
Superfund Site**
Nassau, NY

Existing System with Trucking



Leachate Collection & Trucking



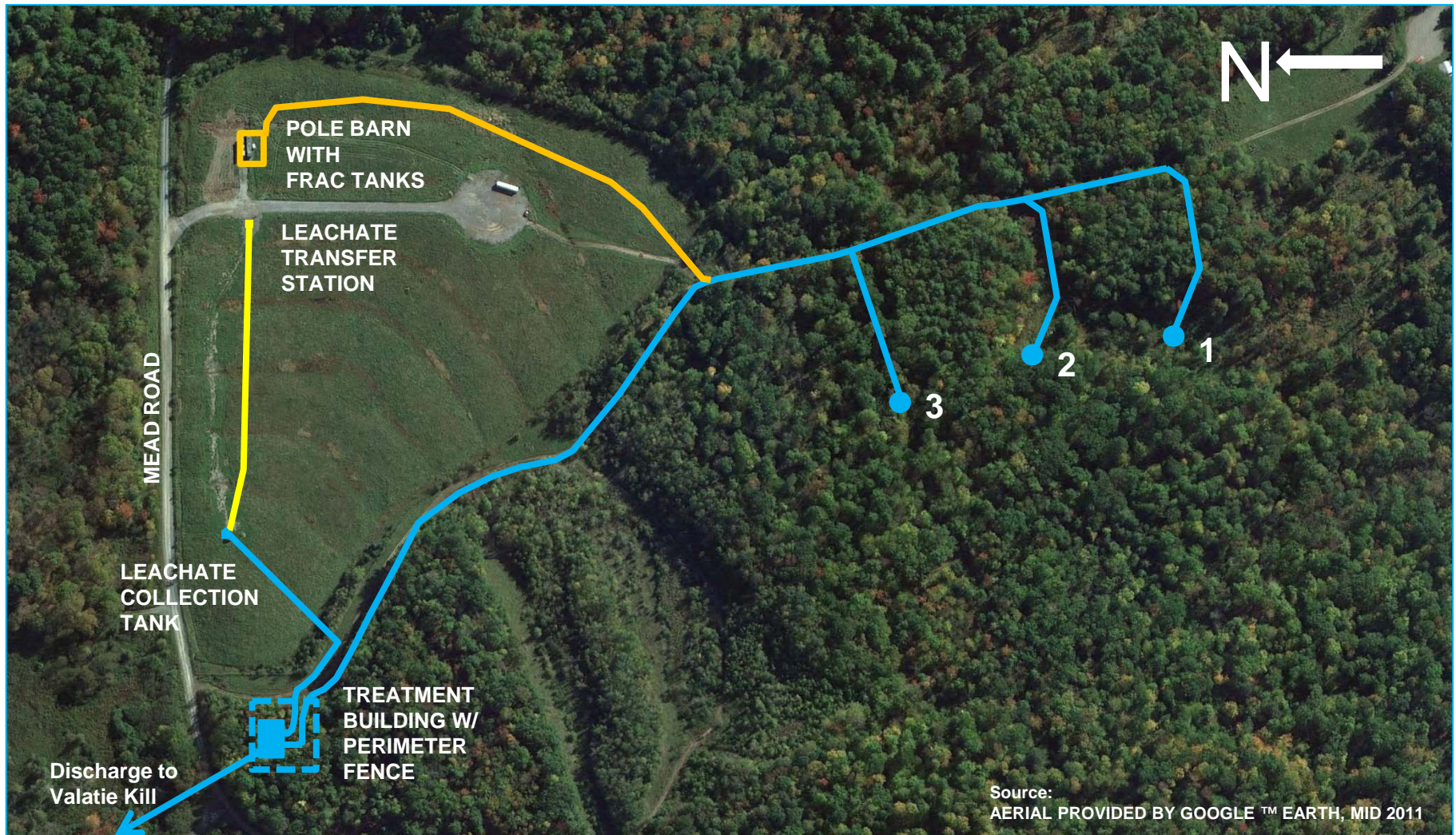
Groundwater Extraction & Trucking



Trucking – Recent Activities

- April 2012: GE and SI Group agree to take over trucking and build new treatment plant
- August 2012: First truck leaves site under GE and SI Group management
- Transporters permitted by NY and approved by EPA
- Water treated at EPA approved facility in Bristol, CT
- Trucking Monday and Thursday mornings; avoiding school busing (before 6:50am and 2:50-4:00pm)
- Warning signs and flag persons during trucking

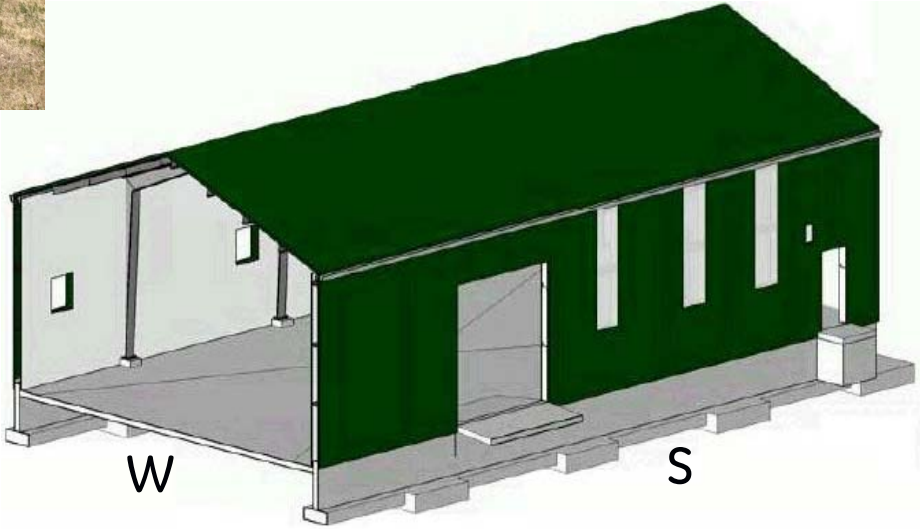
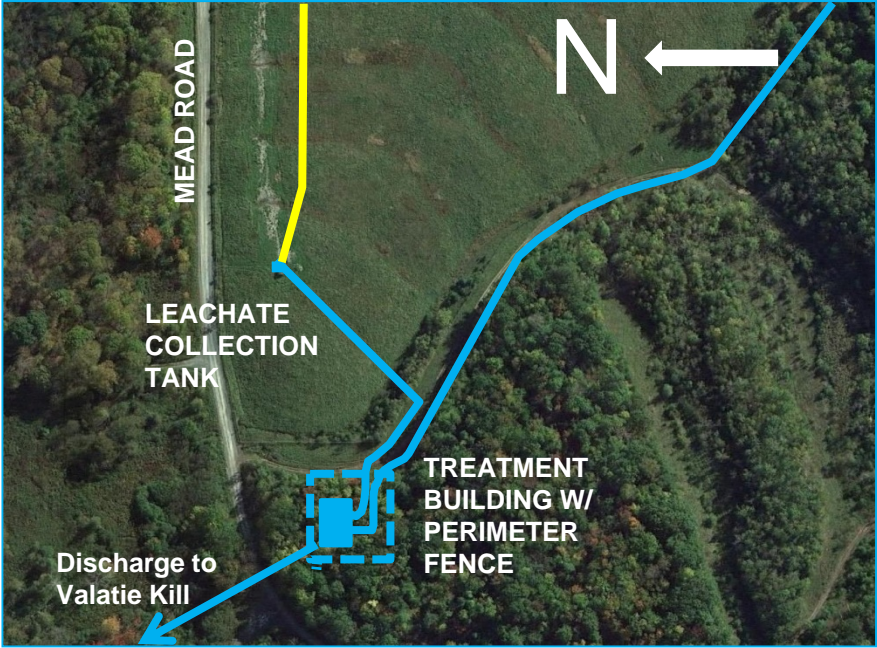
New System without Trucking



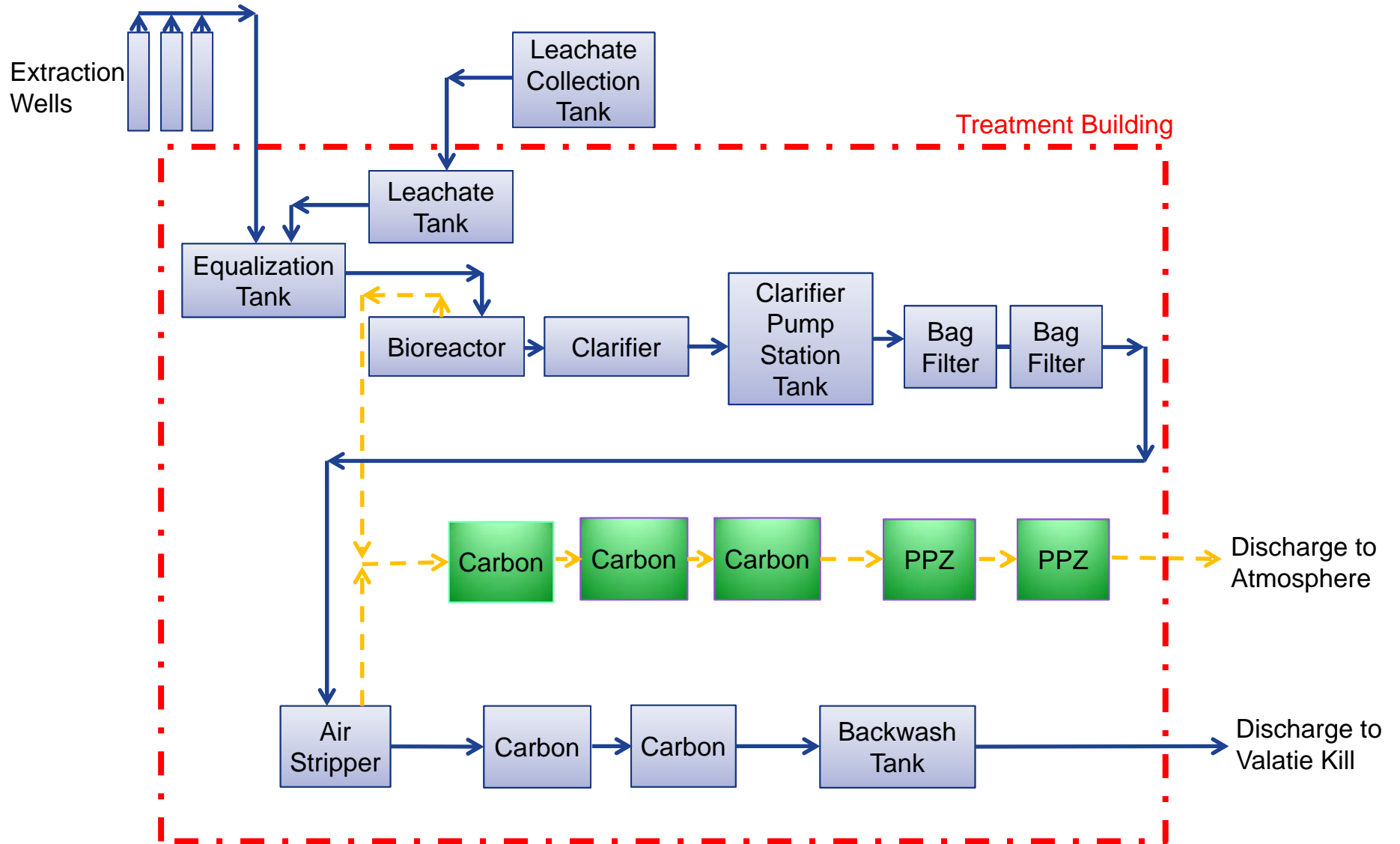
Getting to a Fully Operational System

- Pre-design investigation
- Design
 - Submitted to EPA on February 13
 - Construction portions of design report approved by EPA on April 29
- Construction
 - Began with clearing on May 13
 - Expected to be finished by late September
- Start-up testing
- Routine operation & performance monitoring

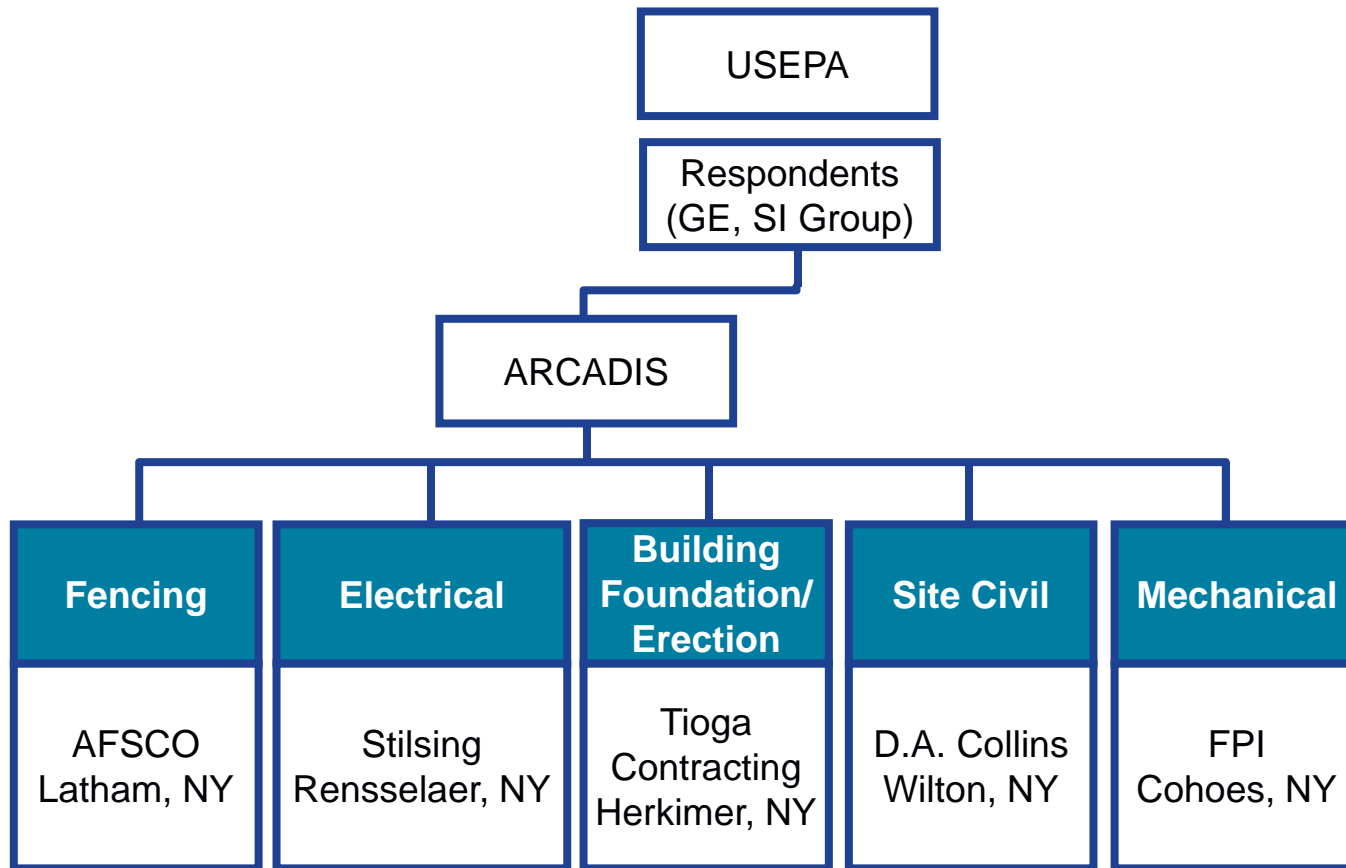
New Treatment Building



Treatment System Components



Construction – Project Organization

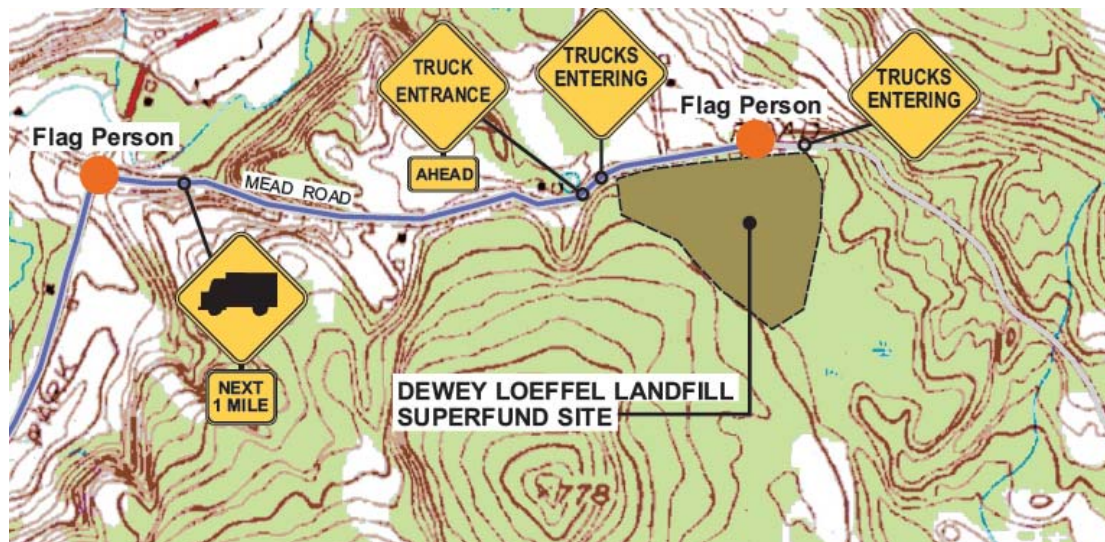


Construction Activities (May-Sept)

- Site clearing/grading (May)
- Building foundation excavation and concrete work (May-June)
- Trenching & underground piping, including Mead Road crossing (June)
- Building erection & perimeter fencing (July)
- Electrical work (July-Sept)
- Delivery/installation of treatment system components (Aug)
- Mechanical work (Aug-Sept)

Workdays, Hours & Traffic Management

- Weekdays except key holidays
- 7am–7pm, but typically ending ~5pm
- No large construction vehicles during school busing (2:50-4:00pm)
- Traffic warning signs
- Flag persons



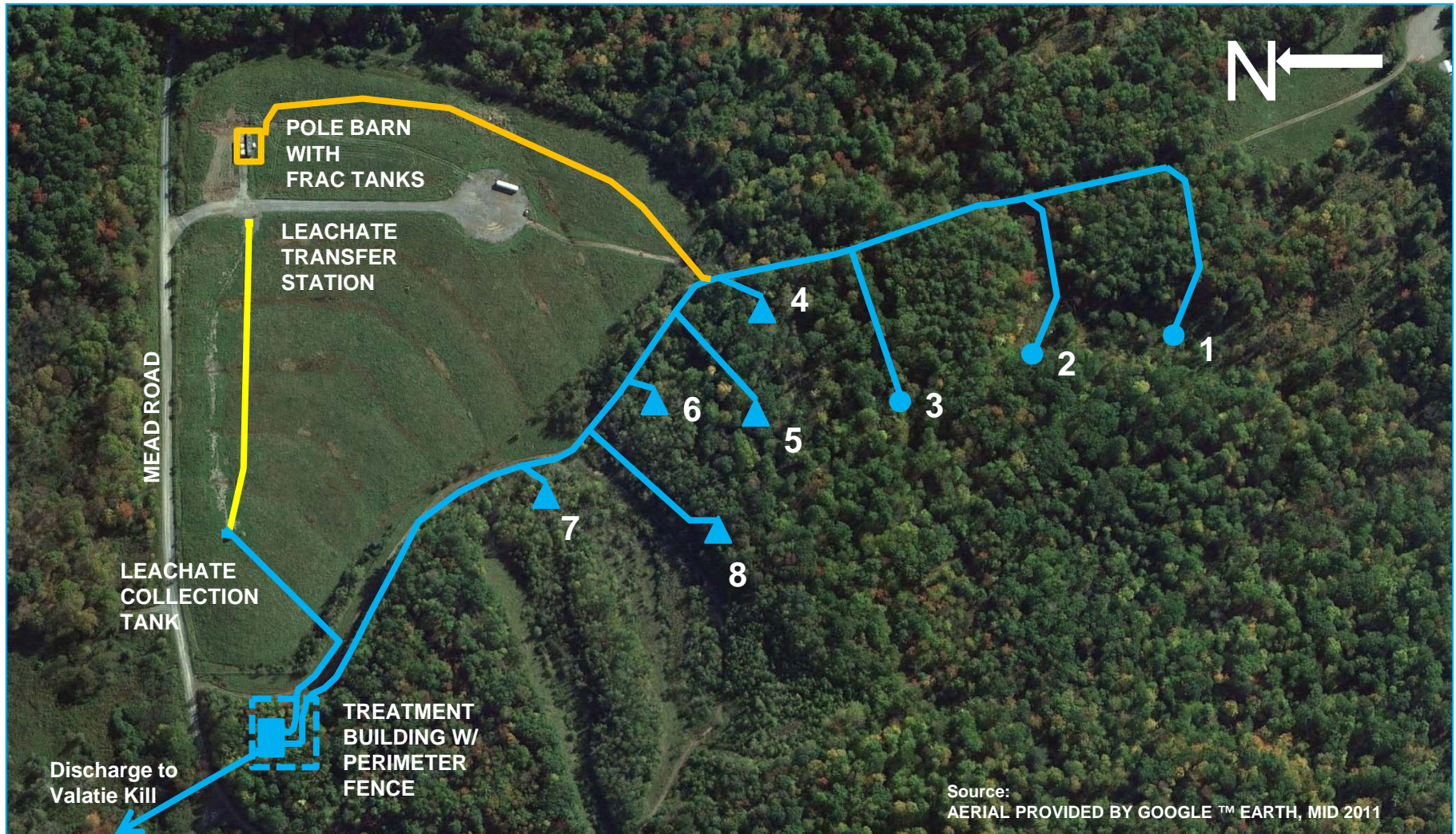
Start-up Testing (Sept-Nov)

- Preliminary start-up testing (Sept)
- Clean water start-up (Oct)
- Redirect leachate & groundwater to system (Oct)
- Sampling to assess treatment system components
- Discharge initially to tanks next to building
 - Sample each tank; compare to discharge limits
 - USEPA approval to discharge each tank
- USEPA determines when tanks no longer needed – transition to routine operations (Nov)

Routine Operations

- Instrumentation, automated controls & notifications to operator
- Remote monitoring capability – allows operator to check system from office
- Power outages – manual restart by operator after system checked
- Operator present 3 days per week for routine activities, plus power outages & responding to system notifications
- Performance monitoring (leachate, extraction wells, treatment system, discharge)

System with Additional Extraction Wells



Questions during the work:

Larisa Romanowski (USEPA)

518-747-4389

Romanowski.Larisa@epa.gov

Joan Gerhardt (for GE)

518-792-3856

Joan.Gerhardt@behancom.com