



**Kevin Mooney**  
Senior Project Manager  
GE Aerospace  
1 Plastics Ave.  
Pittsfield, MA 01201  
T (413) 553-6610  
kevin.mooney@ge.com

*Via Electronic Mail*

February 28, 2025

Mr. Joshua Fontaine  
U.S. Environmental Protection Agency, New England Region  
Five Post Office Square  
Suite 100  
Boston, MA 02109

**Re: GE-Pittsfield/Housatonic River Site  
Rest of River (GECD850)  
2024 Annual Report on Biota Consumption Advisory Outreach Activities for Housatonic Rest of  
River in Connecticut**

Dear Mr. Fontaine:

Attached for the General Electric Company (GE) is a report entitled *2024 Annual Report on Biota Consumption Advisory Outreach Activities: Housatonic Rest of River – Connecticut*, prepared for GE by Arcadis. This report is submitted in accordance with GE's revised *Biota Consumption Advisory Outreach Plan for Housatonic Rest of River – Connecticut*, submitted by GE on January 20, 2022 and approved by EPA on January 26, 2022. This report describes the outreach activities conducted on GE's behalf in 2024, including the inspection and replacement of biota consumption advisory signs along the Connecticut portion of the Rest of River, as well as the provision of the Connecticut Department of Public Health pamphlet describing the consumption advisory to fishing license sales agents in the Connecticut towns and counties through which the Housatonic River flows. The report also describes the biota consumption advisory outreach activities planned for 2025 and future years for the Housatonic River in Connecticut in accordance with the approved plan.

Please let me know if you have any questions about this annual report.

Very truly yours,

Kevin G. Mooney  
Senior Project Manager

Attachment

Cc: (via electronic mail)

Dean Tagliaferro, EPA  
John Kilborn, EPA  
Christopher Ferry, ASRC Federal  
Thomas Czelusniak, HDR Inc.  
Scott Campbell, Taconic Ridge Environmental  
Izabella Zapisek, Taconic Ridge Environmental  
Traci Iott, CT DEEP  
Susan Peterson, CT DEEP  
Graham Stevens, CT DEEP  
Carol Papp, CT DEEP  
Lori DiBella, CT AG  
Michael Gorski, MassDEP  
Tamara Cardona-Marek, MassDEP  
Ben Guidi, MassDEP  
Michelle Craddock, MassDEP  
Jeffrey Mickelson, MassDEP  
Mark Tisa, MassDFW  
Eve Schluter, MassDFW  
Betsy Harper, MA AG  
Katie Zarada, NOAA  
James McGrath, City of Pittsfield  
Andrew Cambi, City of Pittsfield  
Michael Coakley, PEDA  
Melissa Provencher, BRPC  
Smitty Pignatelli, Town of Lenox  
R. Christopher Brittain, Town of Lee  
Town Manager, Great Barrington  
Town Administrator, Stockbridge  
Town Administrator, Sheffield  
Jim Wilusz, Tri Town Health Dept.  
Lance Hauer, GE  
Andrew Thomas, GE  
Rachel Leary, GE  
Adam Ayers & David Knutsen, Arcadis  
James Bieke, Counsel for GE  
Public Information Repository at David M. Hunt Library in Falls Village, CT  
GE Internal Repository

General Electric Company

# **2024 Annual Report on Biota Consumption Advisory Outreach Activities:**

## **Housatonic Rest of River – Connecticut**

February 2025

# 2024 Annual Report on Biota Consumption Advisory Outreach Activities: Housatonic Rest of River – Connecticut

February 2025

**Prepared By:**

Arcadis U.S., Inc.  
One Lincoln Center, 110 West Fayette Street, Suite 300  
Syracuse  
New York 13202  
Phone: 315 446 9120  
Fax: 315 449 0017

**Prepared For:**

General Electric Company

**Our Ref:**

30236266

## Table of Contents

<b>1</b>	<b>Introduction.....</b>	<b>1</b>
<b>2</b>	<b>Inspection and Maintenance of Advisory Signs .....</b>	<b>3</b>
<b>3</b>	<b>Provision of Biota Consumption Advisory Pamphlets.....</b>	<b>4</b>
<b>4</b>	<b>Future Activities.....</b>	<b>5</b>
<b>4.1</b>	<b>Provision and Maintenance of Fish Consumption Advisory Signs.....</b>	<b>5</b>
<b>4.2</b>	<b>Provision of Fish Consumption Advisory Pamphlets .....</b>	<b>6</b>
<b>4.3</b>	<b>Other Activities .....</b>	<b>7</b>
<b>4.4</b>	<b>Reporting.....</b>	<b>7</b>
<b>5</b>	<b>Schedule.....</b>	<b>8</b>
<b>6</b>	<b>References .....</b>	<b>9</b>

## Tables

<b>Table 1</b>	<b>Summary of Biota Consumption Advisory Sign Locations Along the Housatonic River – Connecticut</b>
<b>Table 2</b>	<b>Fishing License Agents Provided Consumption Advisory Pamphlet</b>

## Figures

<b>Figure 1</b>	<b>Locations of Consumption Advisory Signs Along the Connecticut Portion of the Housatonic River from Canaan South to Cornwall Bridge</b>
<b>Figure 2</b>	<b>Locations of Consumption Advisory Signs Along the Connecticut Portion of the Housatonic River from Cornwall Bridge South to New Milford</b>
<b>Figure 3</b>	<b>Locations of Consumption Advisory Signs Along the Connecticut Portion of the Housatonic River from New Milford South to Lake Zoar</b>
<b>Figure 4</b>	<b>Locations of Consumption Advisory Signs Along the Connecticut Portion of the Housatonic River from Lake Zoar South to Shelton</b>

## Attachments

<b>Attachment A</b>	<b>Connecticut Fish Consumption Advisory Signs</b>
<b>Attachment B</b>	<b>2024 Consumption Advisory Sign Photographic Log</b>
<b>Attachment C</b>	<b>2024 Connecticut Fish Consumption Advisory Pamphlet</b>

## 1 Introduction

The State of Connecticut has a general state-wide consumption advisory for eating fish from Connecticut waters, and it also has specific fish consumption advisories for specific waterbodies in Connecticut, including the Housatonic River. These advisories, developed by the Connecticut Department of Public Health (CT DPH) in conjunction with the Connecticut Department of Energy and Environmental Protection (CT DEEP), are based on the presence of polychlorinated biphenyls (PCBs), mercury, and/or other chemicals in the fish. The current fish consumption advisories for the Housatonic River in Connecticut apply to the consumption of certain fish species from certain portions of the River due to the presence or potential presence of PCBs in the fish. These advisories range from “Do not eat” to warnings to limit consumption to only “one meal per month” or “one meal per week,” depending on the species, area of the River, and the type of individual (i.e., “high-risk group,” consisting of pregnant women, women who could become pregnant, nursing women, and children under the age of six, or “low-risk group,” consisting of all others). In addition, the state-wide advisory warns against consumption of most freshwater fish throughout the State more than once a month or once a week due to the presence of mercury.

On August 9, 2021, in accordance with a prior (June 28, 2021) letter issued by the U.S. Environmental Protection Agency (EPA), the General Electric Company (GE) submitted to EPA a revised Biota Consumption Advisory Outreach Plan for the Housatonic River in Connecticut, which presented GE’s plan for supporting EPA and the State of Connecticut in improving public awareness of the CT DPH’s fish consumption advisories for the Housatonic River. That plan was submitted in accordance with the requirements of Section II.B.7.a of the Revised Modified Resource Conservation and Recovery Act (RCRA) Permit issued to GE by EPA on December 16, 2020,, relating to the portion of the Housatonic River downstream of the confluence of the East and West Branches of the River in Pittsfield, including in Connecticut (referred to as the “Rest of River”). That section requires GE to “cooperate with and support EPA and the States to improve public awareness of the advisories by conducting the following: preparing, distributing, inspecting, monitoring, and maintaining educational and outreach activities, including the producing and posting of signs [in appropriate languages]; providing to hunting and fishing license distributors appropriate written notices regarding such advisories to be included with licenses; and performing all other related activities.”

On December 21, 2021, EPA issued a conditional approval letter for GE’s August 2021 outreach plan and required GE to provide further revisions to that plan. In accordance with that letter, GE revised the plan again and submitted a further revised Biota Consumption Advisory Outreach Plan for Connecticut on January 20, 2022 (Arcadis 2022a). EPA approved that revised plan on January 26, 2022.

The final revised outreach plan noted that GE would submit, by the end of February 2022, an annual report describing the outreach activities conducted on GE’s behalf in 2021 prior to

2024 Annual Report on Biota Consumption Advisory Outreach Activities:  
Housatonic Rest of River – Connecticut

submission of the final plan and would thereafter submit such annual reports by the end of February in the year following the subject year. Since that time, GE has conducted the advisory outreach activities described in the final outreach plan and has submitted reports on those activities for 2021, 2022, and 2023 (Arcadis 2022b, 2023, 2024). The most recent such report, which described 2023 activities, was submitted on February 29, 2024 (Arcadis 2024) and was approved by EPA by letter dated July 10, 2024.

The present report describes biota consumption advisory outreach activities performed by Arcadis on GE's behalf in 2024. Section 2 of this report describes the inspection and replacement of signs in 2024. Section 3 describes the provision of written notices regarding biota consumption advisories in Connecticut in 2024. Section 4 describes future outreach activities, including inspection and replacement of advisory signs, as well as provision of biota consumption advisory pamphlets and submission of annual reports on those activities. Section 5 provides a schedule for those future activities.

## 2 Inspection and Maintenance of Advisory Signs

During June 2024, GE conducted a survey of the current biota consumption advisory signs posted along the Housatonic River in Connecticut and its tributaries, at the locations listed in Table 1, to determine whether the signs that were placed at public access points were still present. Copies of the current signs, which were prepared in English, Spanish, and four Asian languages (Vietnamese, Cambodian, Lao, and Hmong) and may be replaced in the future by revised signs using wording developed by the State of Connecticut (“the State”), are shown in Attachment A.<sup>1</sup>

Specifically, during the period of June 11 through 21, 2024, Arcadis, on behalf of GE, performed the survey of the signs. During this survey, signs were inspected at the previously posted locations; signs that were missing, vandalized, or deemed illegible were replaced as necessary; and photo documentation was obtained.

Table 1 lists the locations of all consumption advisory signs installed along the Rest of River in Connecticut, as well as their most recent installation date (when known), their locational coordinates, and comments showing the results of the 2024 inspection for each of those signs, including maintenance/replacement activities performed. The locations of the consumption advisory signs are depicted on Figures 1 through 4. On those figures, the “small” signs are those in English and Spanish and the “large” signs are those in the four Asian languages. A sign photographic log is provided in Attachment B. Locational information is being maintained in a Geographic Information System (GIS) geospatial database and locational map, developed to assist with regular inspections and replacement of signs.

---

<sup>1</sup> In its conditional approval letters issued on June 28 and December 21, 2021 for prior versions of the outreach plan, EPA indicated that, after consultation with the State of Connecticut, it would advise GE of any desired revisions to the format and wording of these signs, including translations of the signs into appropriate non-English languages. No such changes have been provided to GE to date, and thus there have been no changes to the signs shown in Attachment A.



### 3 Provision of Biota Consumption Advisory Pamphlets

On June 10, 2024, Arcadis, on behalf of GE, distributed copies of the 2024 Connecticut fish consumption advisory pamphlet, entitled “If I Catch It, Can I Eat It?”, and an appropriate cover letter to fishing license sales agents in the Connecticut towns and counties through which the Housatonic River flows. The pamphlet was provided in both English and Spanish. Copies of the pamphlet provided (in both English and Spanish) are included in Attachment C.<sup>2</sup>

The entities that were provided biota consumption advisory pamphlets and cover letters in hard copy format are listed in Table 2. The original list of fishing license agents was included in the approved outreach plan and was developed by reviewing CT DEEP’s list of town clerks and outdoor equipment retailers that sell fishing licenses (available at [https://portal.ct.gov/-/media/DEEP/fishing/general\\_information/TownClerkRetailAgentspdf.pdf](https://portal.ct.gov/-/media/DEEP/fishing/general_information/TownClerkRetailAgentspdf.pdf)), plotting the locations of all those entities in a Geographic Information System (GIS), and then including on the list the Town Clerk offices located within the Connecticut towns through which the Housatonic River flows and other retailers located within the counties of Litchfield, Fairfield, and New Haven. In 2024, that list was updated following the same procedure and utilizing CT DEEP’s latest (April 2024) online list of outdoor license agents available at the above website address.<sup>3</sup> Table 2 contains the updated list.

In its cover letters to all fishing license agents, GE requested the license agents distribute the pamphlet to all persons obtaining a fishing license. In addition, in all cover letters, GE committed to provide the recipients with a reasonable number of additional pamphlets if requested. No additional pamphlets were requested in 2024.

---

<sup>2</sup> In its above-mentioned June 28 and December 21, 2021 conditional approval letters, EPA indicated that it was in consultation with the State of Connecticut regarding translation of this pamphlet into additional languages and would provide any such translations to GE. No such additional translations have been provided to GE to date; the pamphlets that GE distributed in 2024 were those shown in Attachment C.

<sup>3</sup> In 2024, three entities were removed from the distribution list: Ridgefield Town Clerk in Fairfield County (which is not a town along the Housatonic River and was previously erroneously included as a retailer due to a misspelling in the state database); Stratford Bait & Tackle in Fairfield County (which is no longer on the CT DEEP list); and Bobby J’s Bait & Tackle in New Haven County (which is also no longer on the CT DEEP list). In addition nine Walmart stores (recent additions to the CT DEEP list) were added to the distribution list.

## 4 Future Activities

This section describes the future biota consumption outreach activities that GE will conduct in the Connecticut portion of the Rest of River. This description is taken largely from Biota Consumption Advisory Outreach Plan submitted on January 20, 2022 and approved by EPA.

### 4.1 Provision and Maintenance of Fish Consumption Advisory Signs

As noted above, EPA advised GE in 2021 that, after consultation with the State, EPA will advise GE of any desired revisions to the format and wording of the advisory signs, and that this will include a translation into the non-English languages in which the signs are to be written. On December 22, 2022, EPA advised GE that it was continuing that consultation. To date, GE has not received information from EPA regarding revisions of the signs or additional translations.

If and when EPA provides this information to GE, GE will provide a mock-up of the revised signs in the designated languages to EPA for final approval. After EPA approves the new format and wording of the signs, GE will post additional fish consumption advisory signs, using the new format, wording, and languages, along the Housatonic River and two affected tributaries subject to the CT DPH advisory – i.e., the Blackberry River below Blast Furnace in North Canaan and Furnace Brook in Cornwall. In addition, GE will provide and post a limited number of these fish consumption advisory signs on other tributaries of the Housatonic River that have been specified by EPA (namely, Hollenbeck River, Tenmile River, Salmon Creek, Still River, Pomperaug River, Pootatuck River, and Naugatuck River) at locations identified by EPA after consultation with the State. Further, if requested by the State, GE will provide additional such signs to the State. At the State's discretion, the additional signs will be posted and monitored by the State at additional locations outside the Housatonic River and the tributaries listed above. Additionally, GE will update and maintain the GIS geospatial database and locational map of all sign locations to assist with subsequent inspections and replacement of signage. The database and locational map will be shared with EPA and the State upon request.

On an annual basis, GE will conduct an inspection of the currently posted signs or, if revised signs have been posted in the meantime, of the posted revised signs. During this annual inspection, if signs are missing, vandalized, or deemed illegible or if additional likely public access points are identified, GE will produce replacement or additional signs and post them at the appropriate locations. GE will also ensure that the signs remain visible to the public and will provide maintenance through removal of obscuring vegetation and/or overgrowth.

Further, if, at any time, EPA, CT DEEP, or CT DPH identifies additional locations where the posting of a replacement or additional sign is warranted or any changes to the format, wording, or languages of the signs, EPA will specify such additional locations or changes and GE will

provide the requested sign(s), or make the specified changes, and post it/them at the appropriate location(s). In the event that EPA advises GE that revisions to the signs are necessary, it will specify the desired revisions to the format and wording of the signs and will provide translations into the desired languages, and GE will again provide a mock-up of the revised signs to EPA for final approval before the signs are fabricated and installed.

If site conditions and/or CT DPH advisories change, GE will consult with EPA, CT DEEP, and CT DPH regarding updates to the biota advisory signs.

## **4.2 Provision of Fish Consumption Advisory Pamphlets**

On an annual basis, continuing in 2025, GE will provide fishing license sales agents in the Connecticut towns and counties through which the Housatonic River flows with copies of the then-current Connecticut fish consumption advisory fact sheet/pamphlet and an appropriate cover letter. The pamphlet will be provided in both English and Spanish. In 2025, it will be the 2024 pamphlet included in Attachment C, entitled “If I Catch It, Can I Eat It?”, which also can be found in English at <https://portal.ct.gov/-/media/dph/ehdw/ificatchit-2024-final-english-may-9-2024.pdf>, and in Spanish at <https://portal.ct.gov/-/media/dph/ehdw/if-i-catch-it-can-i-eat-it-spanish-may--9-2024-final.pdf>, or a 2025 version if available. As noted above, EPA advised GE in 2021 that it was in discussion with the State regarding the translation of the biota consumption advisory pamphlets into various additional languages, and that EPA will provide any such additional translations to GE for distribution once available. In December 2022, EPA advised GE that it was continuing that consultation. No such additional translations have been provided to GE to date.

In 2025, GE is planning to provide the most recent version of biota consumption advisory pamphlet in the appropriate languages, together with the cover letter, to the fishing license agents listed in Table 2. GE is providing this list to EPA for an annual review. If EPA advises GE of any changes to this list, GE will revise the list accordingly. Further, if, at any time, EPA, CT DEEP, or CT DPH identifies additional recipients for the advisory pamphlets, or any changes to the format, wording, or languages of the pamphlets, EPA will specify such additional recipients or changes to the pamphlets (including translations into the desired languages), and GE will provide such additional pamphlets or make such changes.

In its cover letters to all fishing license agents, GE will request the license agents to distribute the pamphlet to all persons obtaining a fishing license. In addition, in all cover letters, GE will commit to provide the recipients with a reasonable number of additional pamphlets in either English or Spanish if requested (or in other languages if EPA provides GE with translations of the pamphlets into those languages).

As with the consumption advisory signs, if site conditions and/or CT DPH advisories change, GE will consult with EPA, CT DEEP, and CT DPH regarding updates to the biota consumption advisory pamphlets.

### **4.3 Other Activities**

In addition to the activities described above, GE will support other, related educational and outreach activities undertaken by EPA or the State to publicize the CT DPH's biota consumption advisory for the Housatonic River. Such activities may include, but are not limited to, providing information or technical assistance to EPA, CT DEEP, and/or CT DPH, as requested, for their development of public service announcements on their websites or for their holding of public meetings to publicize the biota consumption advisory, and if requested, use of QR codes on the advisory signs or in the informational pamphlets linking the public to additional information on CT DPH's website.

If site conditions and/or CT DPH advisories change, GE will consult with EPA, CT DEEP, and CT DPH regarding updates to any such outreach and educational activity materials to include current information. Further, since the manner of support and information dissemination may change over time, GE will discuss with EPA, CT DEEP, and CT DPH other changes or additions to the outreach program that are suggested by any of those agencies, and if agreed upon by EPA, CT DEEP and CT DPH and if consistent with the requirements of Section II.B.7.a of the Revised Modified Permit, GE will make such changes or additions to the outreach plan. Any changes proposed to the outreach plan by GE will be submitted to EPA for approval in the annual report described in Section 4.4 below.

### **4.4 Reporting**

Continuing in 2025 and subsequent years, GE will prepare and submit to EPA an annual report summarizing the biota consumption advisory activities conducted during the prior year. The annual report will summarize the activities conducted for the biota consumption advisory signs and implementation of other outreach and educational activities (if any) during the prior year. That report will also identify the entities to which copies of the consumption advisory informational pamphlets were distributed during the prior year. The report will include figures and tables to document the locations of the signs and identify locations where signs were installed or replaced if missing or illegible. The most recent posting date, when known, will be included to help monitor the age of the signs. In addition, the report will describe the outreach activities to be conducted in the upcoming year, including any proposed changes to, or additional activities proposed for, the outreach program.

## 5 Schedule

In accordance with the approved Biota Consumption Advisory Outreach Plan for Connecticut, GE will conduct sign installation, inspection, maintenance, and replacement activities on an annual basis. Those activities will include the following: (1) If and when EPA advises GE of any desired revisions to the format, wording, and languages of the signs and approves the revised signs, GE will thereafter post those revised signs as described in the second paragraph of Section 4.1; and (2) in other years (before or after such posting), GE will conduct annual inspections of the posted signs and perform maintenance, replacement, and/or additional sign installation activities as necessary. Additionally, upon request by EPA or the State, GE will provide and post consumption advisory signs at specific location(s) along the River or its tributaries.

In addition, GE will provide copies of the current biota consumption advisory pamphlet to the fishing license agents listed in Table 2 (with any revisions identified by EPA) and ask them to distribute the pamphlets to all persons obtaining a fishing license. GE will subsequently repeat this activity on an annual basis, likely in the spring.

GE will submit the annual report on biota consumption advisory activities conducted in 2025 by February 28, 2026, and will thereafter submit such annual reports, as described in Section 4.4, by the end of February in the year following the subject year.

GE will continue to perform the biota consumption advisory outreach activities described in this revised plan until such time as the advisories are discontinued or this program is modified with EPA approval.

## 6 References

Arcadis (Arcadis U.S., Inc.). 2022a. *Biota Consumption Advisory Outreach Plan for Housatonic Rest of River – Connecticut*. Prepared for General Electric Company. Revised January 2022.

Arcadis. 2022b. *2021 Annual Report on Biota Consumption Advisory Outreach Activities – Housatonic Rest of River – Connecticut*. Prepared for General Electric Company. February 2022.

Arcadis. 2023. *2022 Annual Report on Biota Consumption Advisory Outreach Activities: Housatonic Rest of River – Connecticut*. Prepared for General Electric Company. February 2023.

Arcadis. 2024. *2023 Annual Report on Biota Consumption Advisory Outreach Activities: Housatonic Rest of River – Connecticut*. Prepared for General Electric Company. February 2024.

# Tables

**Table 1**  
**Summary of Consumption Advisory Sign Locations and Maintenance Activities**  
**Biota Consumption Advisory Outreach Annual Report**  
**Housatonic Rest of River - Connecticut**



Location Description	Location ID	Reach/ Tributary	Translations at Location	Most Recent Sign Installation Date	Coordinates <sup>1</sup>		Comments
					North	West	
Near old bridge abutments	1	10	English, Spanish	English - N/A Spanish - 6/21/2024	42.0313736	73.3498315	Found English sign past old bridge abutments on large tree off Weatogue Rd in Salisbury, CT. Replaced Spanish sign on same tree.
Fire dept. pull off	2	10	English, Spanish	English - N/A Spanish - N/A	42.0259341	73.3531601	Found both English and Spanish signs next to fire department water hookup on Weatogue Rd in Salisbury, CT. Location was cut out so that signs could be seen.
At Rte 44 bridge	3	Blackberry River	English, Spanish	English - 11/03/2021 Spanish - 11/03/2021	42.0240141	73.3409852	Found both English and Spanish signs on telephone pole next to bridge off Church St./Rt. 44 in North Canaan, CT. Location needed some cutting.
At Rte 7 bridge	4	Blackberry River	English, Spanish	English - 11/03/2021 Spanish - 11/03/2021	42.0219583	73.3252832	Found both English and Spanish signs on telephone pole adjacent to bridge at corner of Rt. 7 and Lower Rd. in North Canaan, CT. Location needed some cutting.
At lower road bridge	5	Blackberry River	English, Spanish	English - 11/03/2021 Spanish - 11/03/2021	42.0108126	73.3044297	Found both English and Spanish signs on telephone pole off southeast corner of bridge on Lower Rd. in North Canaan, CT. Location was cut out so that signs could be seen.
At blast furnace historic site	6	Blackberry River	English, Spanish	English - 11/03/2021 Spanish - 11/03/2021	42.0109047	73.2924547	Found both English and Spanish signs on tree near Blackberry River at Beckley Iron Furnace State Park. Park just before bridge and walk to bottom of falls in North Canaan, CT.
Great falls upper parking	7	10	English, Spanish	English - 06/21/2024 Spanish - 06/21/2024	41.9639168	73.3718792	Replaced both English and Spanish signs on large tree at end of Great Falls View Parking Lot off Housatonic River Rd., in Salisbury, CT.
Lower great falls parking	8	11	English, Spanish	English - N/A Spanish - N/A	41.9611463	73.3737373	Found English and Spanish signs on large tree at Lower Great Falls Pull-Off on Housatonic River Rd., in Salisbury, CT.
Telephone pole east side of bridge	9	11	English, Spanish	English - N/A Spanish - N/A	41.9585392	73.3704315	Found English and Spanish signs on telephone pole near northeast corner of Falls River Bridge off Water St. in Falls Village, CT.
Pull off above bridge	10	11	English, Spanish	English - 11/03/2021 Spanish - 06/30/2023	41.9581134	73.3712154	Found both English and Spanish signs on tree at pull-off at Falls Mountain Rd. and Dugway Rd. in Salisbury, CT.
Canoe access kiosk	11	11	English, Spanish	English - 11/03/2021 Spanish - N/A	41.9571674	73.3701217	Found both English and Spanish signs on Falls Village Canoe access kiosk off Dugway Rd. in Salisbury, CT.
D.S. canoe access pull off	12	11	English, Spanish	English - 06/30/2023 Spanish - 11/03/2021	41.9484564	73.3678123	Found both English and Spanish signs on large tree adjacent to pull-off on Dugway Rd. in Salisbury, CT.
Posts along corn field	13	11	English, Spanish	English - N/A Spanish - 11/03/2021	41.9342068	73.3623084	Found both English and Spanish signs on large post near southwest corner of bridge on Rt. 7 in Salisbury, CT.
At kiosk DS RT 7, 112 bridge	14	11	English, Spanish	English - N/A Spanish - 11/03/2021	41.9327070	73.3627912	Found both English and Spanish signs on post of Appalachian Trail marker (southbound) at pull-off off on Rt. 7 in Salisbury, CT.



**Table 1**  
**Summary of Consumption Advisory Sign Locations and Maintenance Activities**  
**Biota Consumption Advisory Outreach Annual Report**  
**Housatonic Rest of River - Connecticut**



Location Description	Location ID	Reach/ Tributary	Translations at Location	Most Recent Sign Installation Date	Coordinates <sup>1</sup>		Comments
					North	West	
Pull off above reed brook	15	11	English, Spanish	English – 11/03/2021 Spanish – 11/03/2021	41.9175494	73.3592061	Found both English and Spanish signs, located on tree at start of footpath adjacent to pull-off on River Road in Cornwall, CT. Location needed some cutting.
Tree below RR crossing	16	11	English, Spanish	English - N/A Spanish - N/A	41.9131778	73.3607880	Found both English and Spanish signs on tree near river adjacent to pull-off near railroad crossing on River Rd. in Cornwall, CT. Location needed some cutting.
Tree across from Indian Weir- River Road Cornwall	17	11	English, Spanish	English - N/A Spanish - 05/04/2022	41.9036288	73.3594080	Found both English and Spanish signs on large tree overhanging river, adjacent to pull-off near railroad crossing on River Rd. in Cornwall, CT.
Pull off east side of trail	18	11	English, Spanish	English - 6/20/2024 Spanish - 6/20/2024	41.8960232	73.3584685	Replaced both English and Spanish signs on tree immediately adjacent to original location, adjacent to small pull-off on River Rd. in Cornwall, CT. Original tree trunk broke off.
Large pull off along river	19	11	English, Spanish	English - 06/30/2023 Spanish - N/A	41.8889382	73.3573078	Found both English and Spanish signs on tree adjacent to large pull-off on River Rd. in Cornwall, CT.
Pull off at old bridge abutments	20	11	English, Spanish	English – 06/20/2024 Spanish – 11/03/2021	41.8859590	73.3595716	Found Spanish sign on large tree adjacent to pull-off on River Rd. in Cornwall, CT. Replaced English sign on same tree.
Third pull off on River Rd.	21	11	English, Spanish	English – N/A Spanish – N/A	41.8831788	73.3629210	Found English and Spanish signs on tree adjacent to third pull-off near field on River Rd. in Cornwall, CT.
First pull off on River Rd.	22	11	English, Spanish	English – N/A Spanish – 11/03/2021	41.8809689	73.3641551	Found both English and Spanish signs on post at first pull-off on River Rd. in Cornwall, CT.
Elms North Parking	23	11	English, Spanish	English – N/A Spanish – N/A	41.8804337	73.3659381	Found both English and Spanish signs on post at end of parking loop off Rt. 7 in Sharon, CT. After pavement drive across field to opening in hedgerow, signs are on trail to the river.
Mill River bridge	24	11	English, Spanish	English – N/A Spanish – 11/02/2021	41.8716745	73.3632858	Found both English and Spanish signs on telephone pole at corner of Lower River Rd. and West Cornwall covered bridge in West Cornwall, CT.
Garbage pool	25	11	English, Spanish	English – N/A Spanish – 11/02/2021	41.8692857	73.3631486	Found both English and Spanish signs on tree at “The Bend” canoe access launch off Lower River Rd. in West Cornwall, CT. Location needed some cutting.
Pull off above fly section	26	11	English, Spanish	English – N/A Spanish – 06/29/2023	41.8690233	73.3676631	Found both English and Spanish signs on tree adjacent to pull-off on Rt. 7 just northeast of Pine Swamp Brook in Sharon, CT.
Route 7 pull off, after Pine Swamp Brook.	27	11	English, Spanish	English – N/A Spanish – N/A	41.8667338	73.3697553	Found both English and Spanish signs on tree at Rt. 7 pull-off just after Pine Swamp Brook, adjacent to pull-off on non-river side of road, in Sharon, CT.
Pine Swamp Brook	28	11	English, Spanish	English – N/A Spanish – N/A	41.8665103	73.3695169	Found English and Spanish signs on tree across from Rt. 7 one car pull-off just after Pine Swamp Brook in Sharon, CT. Location needed some cutting.

**Table 1**  
**Summary of Consumption Advisory Sign Locations and Maintenance Activities**  
**Biota Consumption Advisory Outreach Annual Report**  
**Housatonic Rest of River - Connecticut**



Location Description	Location ID	Reach/ Tributary	Translations at Location	Most Recent Sign Installation Date	Coordinates <sup>1</sup>		Comments
					North	West	
Trinity pull off	29(1)	11	English, Spanish	English – N/A Spanish – 11/02/2021	41.8635108	73.3702407	Found both English and Spanish signs on large pine tree adjacent to Trinity Riverside Trailhead at end of Lower River Rd. in Cornwall, CT.
Route 7 pull off	29(2)	11	English, Spanish	English – N/A Spanish – N/A	41.8650819	73.3706404	Found English and Spanish signs on tree near river, along Rt. 7 in Sharon, CT. Tree with signs is toward the bottom of the river bank.
In front of Clarkes	30	11	English, Spanish	English – N/A Spanish – 11/02/2021	41.8624019	73.3733347	Found both English and Spanish signs on tree across Rt. 7 from Clarke Outdoors building in Sharon, CT.
Border of TMA fly section	31	11	English, Spanish	English – N/A Spanish – N/A	41.8587375	73.3749403	Found English and Spanish signs across from Rt. 7 pull-off at start of Trout Management Area on tree in Sharon, CT.
Pull off right before Carse Brook	32(1)	11	English, Spanish	English – N/A Spanish – N/A	41.8546226	73.3761258	Found both Spanish and English signs on tree before Carse Brook at Rt. 7 pull-off in Sharon, CT. Tree with signs is 50 feet into the woods.
First pull off after Carse Brook	32(2)	11	English, Spanish	English – N/A Spanish – N/A	41.8558266	73.3756300	Found both Spanish and English signs on tree just after Carse Brook at Rt. 7 pull-off in Sharon, CT.
Cellar hole	33	11	English, Spanish	English – N/A Spanish – N/A	41.8510599	73.3760175	Found English and Spanish signs on tree at Cellar Hole boat launch pull-off on Rt. 7 in Sharon, CT. Location was cut out so that signs could be seen.
Pull off below cellar hole	34	11	English, Spanish	English - N/A Spanish - 11/02/2021	41.8463806	73.3754449	Found both English and Spanish signs on tree at Rt. 7 pull-off with "No Swimming No Picnicking" sign in Sharon, CT.
End of campsites at meadows	35	11	English, Spanish	English - 11/02/2021 Spanish - 11/02/2021	41.8418393	73.3767129	Found both English and Spanish signs on tree at end of road, down path about 100 ft in Housatonic Meadows State Campground (take left at entry - all the way to end at trail) in Sharon, CT.
Housatonic meadows campground	36(1)	11	English, Spanish	English - N/A Spanish - N/A	41.8396575	73.3780520	Found Spanish and English signs on tree before cabins at Housatonic Meadows State Campground (take a left at entry) in Sharon, CT.
Housatonic meadows campground	36(2)	11	English, Spanish	English - N/A Spanish - N/A	41.8412251	73.3768500	Found Spanish and English signs on tree at end of road past cabins at Housatonic Meadows State Campground (take a left at entry - just after cabins before end of road) in Sharon, CT. Location needed some cutting.
In front of pine knob loop	37	11	English, Spanish	English - N/A Spanish - 11/02/2021	41.8330233	73.3832334	Found both English and Spanish signs on tree across Rt. 7 from Pine Knob Loop Trailhead Parking in Sharon, CT.
Dual pull off below pine knob	38(1)	11	English, Spanish	English - N/A Spanish - N/A	41.8308085	73.3845745	Found English and Spanish signs on telephone pole adjacent to Rt. 7 pull-off just before Pine Knob Loop Trail in Sharon, CT.
Dual pull off below pine knob	38(2)	11	English, Spanish	English - N/A Spanish - N/A	41.8314613	73.3845121	Found English and Spanish signs on telephone pole just north of Rt. 7 pull-off before Pine Knob Loop Trail in Sharon, CT.

**Table 1**  
**Summary of Consumption Advisory Sign Locations and Maintenance Activities**  
**Biota Consumption Advisory Outreach Annual Report**  
**Housatonic Rest of River - Connecticut**



Location Description	Location ID	Reach/ Tributary	Translations at Location	Most Recent Sign Installation Date	Coordinates <sup>1</sup>		Comments
					North	West	
Dual pull off below pine knob	38(3)	11	English, Spanish	English - 11/02/2021 Spanish - 11/02/2021	41.8321875	73.3843401	Found English and Spanish signs on tree just south of Pine Knob Loop Trail on west side of Rt. 7 in Sharon, CT. Location was cut out so that signs could be seen.
Second pull off upstream housatonic meadows	39	11	English, Spanish	English - 06/29/2023 Spanish - 06/29/2023	41.8279812	73.3822218	Found both English and Spanish signs on tree at pull-off on Rt. 7 in Sharon, CT.
At roadside pull-off with picnic table	40	Furnace Brook	English, Spanish	English - 11/02/2021 Spanish - 11/02/2021	41.8238621	73.3578895	Found both English and Spanish signs on tree adjacent to pull-off w/ picnic tables on Furnace Brook Rd. in Cornwall, CT.
First pull off upstream housatonic meadows	41	11	English, Spanish	English - N/A Spanish - N/A	41.8260165	73.3798139	Found both English and Spanish signs on large pine tree at pull-off on Rt. 7, just north of Housatonic Meadows State Park in Sharon, CT.
Housatonic meadows parking	42	11	English, Spanish	English - 06/19/2024 Spanish - 06/19/2024	41.82459	73.37792	Both signs and sign post were gone. Installed both English and Spanish signs on tree adjacent to parking lot area near the entrance to Housatonic Meadows State Park off Rt. 7 in Sharon, CT.
Housatonic meadows water entry	43	11	English, Spanish	English - 07/22/2022 Spanish - 07/22/2022	41.82452	73.37668	Found both English and Spanish signs on tree just south of Housatonic Meadows State Park parking area, off Rt. 7 in Sharon, CT.
Boat launch housatonic meadows	44	11	English, Spanish	English - N/A Spanish - N/A	41.8239131	73.3733779	Found both English and Spanish signs on post near boat launch in Housatonic Meadows State Park off Rt. 7 in Sharon, CT.
Commercial boat launch	45	11	English, Spanish	English - N/A Spanish - N/A	41.8231883	73.3725780	Found both English and Spanish signs on tree at commercial boat launch in Housatonic Meadows State Park at end of road off Rt. 7 in Sharon, CT.
At bridge just above confluence with Housatonic River	46(1&2)	11	English, Spanish	English - 11/01/2021 Spanish - N/A	41.8213871	73.3712023	Found 2 sets of English and Spanish signs on telephone pole just past Furnace Brook confluence at parking area off Popple Swamp Rd. in Cornwall Bridge, CT.
At bridge just above confluence with Housatonic River	46(3)	11	English, Spanish	English - 06/28/2023 Spanish - 11/01/2021	41.8219437	73.3711222	Found both English and Spanish signs on large maple tree at the start of Lower River Rd., next to railroad tracks in Cornwall Bridge, CT.
Furnace Brook confluence	47	11/Furnace Brook	English, Spanish	English - 11/01/2021 Spanish - N/A	41.8210340	73.3713518	Found both English and Spanish signs on telephone pole by Furnace Brook confluence bridge off Popple Swamp Rd. in Cornwall Bridge, CT.
Underneath Cornwall bridge	48	11	English, Spanish	English - 11/01/2021 Spanish - 11/01/2021	41.8199800	73.3732500	Found both English and Spanish signs at Francis L. Sheane Fly Fishing Area pull-off on River Rd, under Rt. 7 bridge in Sharon, CT.
Above Rte 4 bridge	49	Furnace Brook	English, Spanish	English - N/A Spanish - N/A	41.8186086	73.3682244	Found both English and Spanish signs on tree at Furnace Brook Memorial pull-off on Rt. 4 just east of Cornwall Bridge, CT.
End of River Rd trail head	50	12	English, Spanish	English - N/A Spanish - N/A	41.8077504	73.3916629	Found both English and Spanish signs on tree at pull-off on River Rd., close to Appalachian Trail gate in Sharon, CT.

**Table 1**  
**Summary of Consumption Advisory Sign Locations and Maintenance Activities**  
**Biota Consumption Advisory Outreach Annual Report**  
**Housatonic Rest of River - Connecticut**



Location Description	Location ID	Reach/ Tributary	Translations at Location	Most Recent Sign Installation Date	Coordinates <sup>1</sup>		Comments
					North	West	
Gunn Brook Pull off	51	12	English, Spanish	English - 06/19/2024 Spanish - 06/19/2024	41.8050184	73.3872976	Replaced both English and Spanish signs on same tree at end of Swifts Bridge Rd. off Rt. 7 in Cornwall Bridge, CT.
Across from Kent Falls	52	12	English, Spanish	English - 11/01/2021 Spanish - 11/01/2021	41.7765666	73.4191636	Found both English and Spanish signs on tree across the railroad tracks and to the southwest of Kent Falls State Park off Rt. 7 in Kent, CT.
Footpath Kiosk End of River Rd	53	12	English, Spanish	English - N/A Spanish - N/A	41.7679466	73.4381184	Found both English and Spanish signs on Appalachian Trail kiosk at end of River Rd. in Kent, CT.
North Kent Pool	54	12	English, Spanish	English - N/A Spanish - N/A	41.7668043	73.4380071	Found both English and Spanish signs on Housatonic River Wildlife Management Area kiosk at end of N Kent No 2 Rd. in Kent, CT.
Footpath near culvert past gate	55	12	English, Spanish	English - 10/29/2021 Spanish - 10/29/2021	41.7614319	73.4471906	Found both English and Spanish signs on tree adjacent to footpath past Appalachian Trail gate on River Rd. in Kent, CT.
Hiker pull off River Rd	56	12	English, Spanish	English - N/A Spanish - 10/29/2021	41.7580355	73.4502239	Found both English and Spanish signs on tree adjacent to Appalachian Trail parking area on River Rd. in Kent, CT.
Long pull off River Rd	57	12	English, Spanish	English - N/A Spanish - N/A	41.7510705	73.4574571	Found English and Spanish signs on large tree adjacent to pull-off on River Rd. in Kent, CT.
2 car pull off above island	58	12	English, Spanish	English - 10/29/2021 Spanish - 10/29/2021	41.7507338	73.4595865	Found both English and Spanish signs adjacent to 2 car pull-off on River Rd., on downstream end of two large islands in the Housatonic River, on large tree in Kent, CT.
Island pull off near brook	59	12	English, Spanish	English - N/A Spanish - 10/29/2021	41.7501105	73.4599965	Found both English and Spanish signs on tree adjacent to island pull-off on River Rd. in Kent, CT. Location is near small brook.
John Rodgers memorial	60	12	English, Spanish	English - N/A Spanish - 10/29/2021	41.7454448	73.4646448	Found both English and Spanish signs on tree next to river adjacent to pull-off on River Rd. John Rodgers Memorial in Kent, CT.
First pull off on River Rd	61	12	English, Spanish	English - N/A Spanish - 10/29/2021	41.7409782	73.4701715	Found both English and Spanish signs on tree adjacent to pull-off on River Rd. in Kent, CT.
Large pull off before River Rd	62	12	English, Spanish	English - N/A Spanish - N/A	41.7388249	73.4723139	Found English and Spanish signs on a telephone pole adjacent to pull-off on Skiff Mountain Rd. in Kent, CT. Location was cut out so that signs could be seen.
Large log pull off	63	12	English, Spanish	English - N/A Spanish - 10/29/2021	41.7364885	73.4739591	Found both English and Spanish signs on dead tree adjacent to pull-off on Skiff Mountain Rd. in Kent, CT.
341 bridge street bridge	64	12	English, Spanish	English - N/A Spanish - 10/29/2021	41.7268615	73.4815584	Found both English and Spanish signs on tree under west side of Macedonia Rd. (Rt 341) bridge in Kent, CT. Park near trail off Skiff Mountain Rd. and walk under bridge.

**Table 1**  
**Summary of Consumption Advisory Sign Locations and Maintenance Activities**  
**Biota Consumption Advisory Outreach Annual Report**  
**Housatonic Rest of River - Connecticut**



Location Description	Location ID	Reach/ Tributary	Translations at Location	Most Recent Sign Installation Date	Coordinates <sup>1</sup>		Comments
					North	West	
Pull off above Bulls Bridge	65	12	English, Spanish	English - N/A Spanish - 10/29/2021	41.6894114	73.5044216	Found both English and Spanish signs on tree adjacent to pull-off on Rt. 7 north of Bulls Bridge in Kent, CT. Location was cut out so that signs could be seen.
Large pull off Schaghticoke Rd	66	12	English, Spanish	English - 10/28/2021 Spanish - 10/28/2021	41.6842323	73.5084392	Found both English and Spanish signs on large tree adjacent to barricaded pull-off off Schaghticoke Rd. in Kent, CT.
Above Bulls Bridge kiosk	67	13	English, Spanish	English - 06/18/2024 Spanish - 06/18/2024	41.6719967	73.5110570	Replaced both English and Spanish signs on tree past information kiosk off Bulls Bridge Rd. on west side of Housatonic River in Kent CT.
Bulls Bridge Kiosk	68	13	English, Spanish	English - N/A Spanish - N/A	41.6758218	73.5097454	Found English and Spanish signs at kiosk off Bulls Bridge Rd., just past covered bridge on west side of Housatonic River in Kent, CT.
Bulls Bridge pool	69	13	English, Spanish	English - N/A Spanish - 10/28/2021	41.6730508	73.5092244	Found both English and Spanish signs on tree near river. Park at Bulls Bridge and walk south down Appalachian Trail approx. 1,000 ft, Kent, CT.
Ten Mile River bridge	70	13/Tenmile River	English, Spanish	English - N/A Spanish - 10/28/2021	41.6660701	73.5069456	Found both English and Spanish signs on tree adjacent to Ten Mile River bridge. Park at Bulls Bridge and walk south on Appalachian Trail to the Homestead Trail (approx. 1 mile), in Kent, CT.
10 Mile River Campsites	71	13	English, Spanish	English - N/A Spanish - 10/28/2021	41.6651396	73.5072450	Found both English and Spanish signs on tree near Housatonic River at 10 Mile River Campsites. Park at Bulls Bridge and walk south on Appalachian Trail to the Homestead Trail (approx. 1 mile), over Ten Mile River bridge, in Sherman, CT.
Gunns Eddy lot	72	13	English, Spanish	English - 06/27/2023 Spanish - 10/28/2021	41.6628543	73.4955364	Found both English and Spanish signs on post to left of gate at Gunns Eddy lot off Rt. 7 in New Milford, CT.
First light power plant	73	13	English, Spanish	English - N/A Spanish - 10/28/2021	41.6584438	73.4921542	Found both English and Spanish signs on tree near river adjacent to First Light Power access off Rt. 7 in New Milford, CT.
Pull off above Gaylordsville bridge	74	13	English, Spanish	English - N/A Spanish - 06/27/2023	41.6515331	73.4881225	Found both English and Spanish signs on tree adjacent to barricaded pull-off on Rt. 7 in New Milford, CT.
Gaylordsville bridge	75	13	English, Spanish	English - N/A Spanish - 10/29/2021	41.6464521	73.4831815	Found both English and Spanish signs on tree near bottom of parking lot on southeast corner of Gaylordsville Bridge, at the end of a short trail, in Gaylordsville, CT. Location was cut out.
Bend of the Road pull off Rt 37	76	13	English, Spanish	English - N/A Spanish - 10/28/2021	41.6319932	73.4714837	Found both English and Spanish signs on tree adjacent to small pull-off on Rt. 7, New Milford, CT. Signs sit back off Rt. 7 and were cut out to be seen.
Second pull off on River Rd New Milford	77	13	English, Spanish	English - 06/14/2024 Spanish - 06/14/2024	41.6325540	73.4709614	Replaced both English and Spanish signs on adjacent tree, tree with existing signs fell over. New tree is adjacent to seventh pull-off on River Rd. (coming from Boardman Rd.) in New Milford, CT.
Third pull off River Rd New Milford	78	13	English, Spanish	English - N/A Spanish - 10/27/2021	41.6302085	73.4669438	Found both English and Spanish signs on tree at sixth pull-off on River Rd. (coming from Boardman Rd.) in New Milford, CT.

**Table 1**  
**Summary of Consumption Advisory Sign Locations and Maintenance Activities**  
**Biota Consumption Advisory Outreach Annual Report**  
**Housatonic Rest of River - Connecticut**



Location Description	Location ID	Reach/ Tributary	Translations at Location	Most Recent Sign Installation Date	Coordinates <sup>1</sup>		Comments
					North	West	
Fourth pull off River Rd New Milford	79	13	English, Spanish	English - N/A Spanish - 10/27/2021	41.6230617	73.4616846	Found both English and Spanish signs on tree at fifth pull-off on River Rd. (coming from Boardman Rd.) in New Milford, CT.
Pulloff on RT 37 after Straight-away	80	13	English, Spanish	English - N/A Spanish - 10/28/2021	41.6218468	73.4629815	Found both English and Spanish signs on large tree, near entrance to gravel pit, on Rt. 7, New Milford, CT. Look for survey ribbon on telephone pole, guardrail, and trees, signs sit back off Rt. 7.
Sixth pull off River Rd New Milford	81	13	English, Spanish	English - 10/27/2021 Spanish - 10/27/2021	41.6161775	73.4534978	Found both English and Spanish signs at fourth pull-off on River Rd. (coming from Boardman Rd.), on tree adjacent to parking area, New Milford, CT.
Pull off on Rt 37 US Private Rd	82	13	English, Spanish	English - N/A Spanish - 10/28/2021	41.6147693	73.4530801	Found both English and Spanish signs on tree adjacent to pull-off on Rt. 7, near Kennedy Ct, New Milford, CT.
Beach pull off	83	13	English, Spanish	English - N/A Spanish - N/A	41.6143337	73.4496432	Found English and Spanish signs on tree at third pull-off on River Rd. (coming from Boardman Rd.), New Milford, CT.
Eighth pull off River Rd New Milford	84	13	English, Spanish	English - N/A Spanish - 06/14/2024	41.6110867	73.4485441	Found English sign, replaced Spanish sign on tree at second pull-off on River Rd. (coming from Boardman Rd.), New Milford, CT. Cut a few branches around the signs.
Nineth pull off River Rd New Milford	85	13	English, Spanish	English - N/A Spanish - 10/27/2021	41.6088386	73.4493458	Found both English and Spanish signs on large tree at first pull-off on River Rd., New Milford, CT.
Bleachry Dam	86	13	English, Spanish	English - N/A Spanish - 06/14/2024	41.5654719	73.4127115	Replaced screws holding English sign to tree and replaced Spanish sign, on large tree to the right of gate on path leading down to Bleachry Dam. Trail starts at back of parking lot for Orthodontics office, New Milford, CT. Cut out start of trail and around tree with the signs.
West Cove Marina	87	14	English, Spanish	English - N/A Spanish - N/A	41.5646529	73.4078342	Found English and Spanish signs on telephone pole next to boat launch at West Cove Marina. Drive to end of West St. and around back of building to launch, New Milford, CT.
Town Park	88	14	English, Spanish	English - N/A Spanish - N/A	41.5552755	73.4065729	Found English and Spanish signs on wood post at Addis Park boat launch off Lower Grove St. in New Milford, CT.
Lillinonah State Boat Launch	89	14	English, Spanish	English - N/A Spanish - N/A	41.4802646	73.3489269	Found English, Spanish, and Vietnamese, Cambodian, Lao, Hmong signs at kiosk next to Bridgewater/ Lake Lillinonah Public Boat Launch in Bridgewater, CT.
Lillinonah State Boat Launch	90	14	Vietnamese, Cambodian, Lao, Hmong	N/A	41.4802646	73.3489269	
Lillinonah Woods	91	14	English, Spanish	English - N/A Spanish - 10/26/2021	41.4754540	73.3506881	Found both English and Spanish signs on kiosk at Lillinonah Woods Park off Obtuse Hill Rd., in Brookfield, CT. Cut back bushes around the kiosk.
Lillinonah Lake Boat Launch-Hanover Street	92	14	English, Spanish	English - N/A Spanish - 10/26/2021	41.4712329	73.3323964	Found English, Spanish, and Vietnamese, Cambodian, Lao, Hmong signs at

**Table 1**  
**Summary of Consumption Advisory Sign Locations and Maintenance Activities**  
**Biota Consumption Advisory Outreach Annual Report**  
**Housatonic Rest of River - Connecticut**



Location Description	Location ID	Reach/ Tributary	Translations at Location	Most Recent Sign Installation Date	Coordinates <sup>1</sup>		Comments
					North	West	
Lillinonah Lake Boat Launch-Hanover Street	93	14	Vietnamese, Cambodian, Lao, Hmong	10/26/2021	41.4712329	73.3323964	kiosk next to Lake Lillinonah Town Park boat launch in Newtown, CT.
George C Waldo State Park Area	94	14	English, Spanish	English - 06/23/2023 Spanish - 06/23/2023	41.4639192	73.2867392	Found both English and Spanish signs on tree to left of access gate in George C Waldo State Park in Southbury, CT.
Pond Brook Confluence with Housatonic	95	14	English, Spanish	English - N/A Spanish - N/A	41.4596519	73.3248980	Found English and Spanish signs on kiosk next to Town of Newtown Park & Boat Ramp in Newtown, CT.
Below Shepaug River Dam	96	15	English, Spanish	English - N/A Spanish - 10/26/2021	41.4500145	73.2905771	Found English, Spanish, and Vietnamese, Cambodian, Lao, Hmong signs on large pine tree in the Housatonic River Project Recreation area, just downstream of Shepaug Dam in Southbury, CT.
Below Shepaug River Dam	97	15	Vietnamese, Cambodian, Lao, Hmong	10/26/2021	41.4500145	73.2905771	
Upper Paugusett Trails	98	14	English, Spanish	English - N/A Spanish - 10/26/2021	41.4497604	73.3069349	Found both English and Spanish signs on kiosk at end of Echo Valley Rd. - The Sugarbush at Upper Paugusett in Newtown, CT.
River Road- Sandy Hook	99	15	English, Spanish	English - N/A Spanish - 10/26/2021	41.4448574	73.2670531	Found both English and Spanish signs on tree on River Rd. pull-off in Southbury, CT.
Newtown Forest Trails	100	14	English, Spanish	English - N/A Spanish - 10/27/2021	41.4442831	73.3043922	Found both English and Spanish signs on tree across Alberts Hill Rd. from parking area for Newtown Forest Association in Newtown, CT.
Confluence of the Pootatuck and Housatonic	101	15/Pootatuck River	English, Spanish	English - N/A Spanish - 10/27/2021	41.4398828	73.2687372	Found both English and Spanish signs on large tree at back of parking lot off Bridge End Farm Ln. in park, Sandy Hook, CT. Cut and removed small trees that were covering the signs.
Pomperaug River Confluence Area	102	15/Pomeraug River	English, Spanish	English - 06/23/2023 Spanish - 06/23/2023	41.4389171	73.2511896	Found both English and Spanish signs on large tree at bottom of path off River Rd. in Southbury, CT. Park across River Rd. and walk down past gate. Removed vine that was covering signs.
Lake Zoar Boat Launch	103	15	Vietnamese, Cambodian, Lao, Hmong	06/12/2024	41.4278173	73.2362265	Found English and Spanish signs on kiosk at Lake Zoar Public Boat Launch in Southbury, CT. Replaced Vietnamese, Cambodian, Lao, Hmong sign on same kiosk.
Lake Zoar Boat Launch	104	15	English, Spanish	English - N/A Spanish - N/A	41.4278173	73.2362265	
Kettletown State Park	105	15	English, Spanish	English - N/A Spanish - 10/26/2021	41.424611	73.207332	Found English, Spanish, and Vietnamese, Cambodian, Lao, Hmong signs on kiosk, in Kettletown State Park, adjacent to cove off Lake Zoar, off Georges Hill Rd., Southbury, CT.
Kettletown State Park	106	15	Vietnamese, Cambodian, Lao, Hmong	10/13/2021	41.424611	73.207332	

**Table 1**  
**Summary of Consumption Advisory Sign Locations and Maintenance Activities**  
**Biota Consumption Advisory Outreach Annual Report**  
**Housatonic Rest of River - Connecticut**



Location Description	Location ID	Reach/ Tributary	Translations at Location	Most Recent Sign Installation Date	Coordinates <sup>1</sup>		Comments
					North	West	
Jackson Cove Park	107	15	English, Spanish	English - N/A Spanish - 10/26/2021	41.411503	73.190221	Found English, Spanish, and Vietnamese, Cambodian, Lao, Hmong signs on telephone pole adjacent to Jackson Cove boat launch, at Jackson Cove Park, Jackson Cove Rd., Oxford, CT.
Jackson Cove Park	108	15	Vietnamese, Cambodian, Lao, Hmong	06/20/2023	41.411503	73.190221	
Paugusett State Forest Zoar Trail	109	15	English, Spanish	English - N/A Spanish - 10/27/2021	41.402352	73.187485	Found both English and Spanish signs on kiosk, at Paugusett State Forest Zoar Trailhead at far end of Great Quarter Rd., Sandy Hook, CT.
Marina Halfway River	110	15	English, Spanish	English - N/A Spanish - 10/27/2021	41.389921	73.186828	Found both English and Spanish signs on attendant's shed at Eichlers Cove Marina, Old Bridge Rd., Sandy Hook, CT.
Coppermine Rd Pulloff	111	15	English, Spanish	English - pre 06/2024* Spanish - pre 06/2024*	41.385190	73.172136	Found English, Spanish, and Vietnamese, Cambodian, Lao, Hmong signs on tree adjacent to Coppermine Rd. pull-off, near Stevenson Dam, Oxford, CT.
Coppermine Rd Pulloff	112	15	Vietnamese, Cambodian, Lao, Hmong	pre 06/2024*	41.385190	73.172136	
Roosevelt Dr First Light Pull-off	113	16	English, Spanish	English - 06/12/2024 Spanish - 06/20/2023	41.384197	73.165411	Replaced English and Vietnamese, Cambodian, Lao, Hmong signs on same tree where the Spanish sign was found, along trail from First Light Power pull-off area to Housatonic River, Roosevelt Dr. (Rt. 34), Oxford, CT.
Roosevelt Dr First Light Pull-off	114	16	Vietnamese, Cambodian, Lao, Hmong	06/12/2024	41.384197	73.165411	
Stevenson Dam Recreational area	115	16	English, Spanish	English - N/A Spanish - 10/27/2021	41.382474	73.168963	Found English, Spanish, and Vietnamese, Cambodian, Lao, Hmong signs on kiosk at Housatonic River Project Recreational Area, adjacent to Stevenson Dam off of Rt. 34, downstream side of dam, Monroe, CT.
Stevenson Dam Recreational area	116	16	Vietnamese, Cambodian, Lao, Hmong	05/02/2022	41.382474	73.168963	
Indian Wells Boat Launch	117	16	English, Spanish	English - N/A Spanish - N/A	41.340743	73.124218	Found English, Spanish, and Vietnamese, Cambodian, Lao, Hmong signs on kiosk at Indian Well State Park boat launch, Rt. 454, Shelton CT.
Indian Wells Boat Launch	118	16	Vietnamese, Cambodian, Lao, Hmong	N/A	41.340743	73.124218	
Pink House Cove	119	16	English, Spanish	English - 10/12/2021 Spanish - 10/26/2021	41.338741	73.117091	Found English, Spanish, and Vietnamese, Cambodian, Lao, Hmong signs on telephone pole off of Rt. 34, adjacent to Pink House Cove Ice Fishing Area, on Housatonic River, Derby, CT. Location was cut out.
Pink House Cove	120	16	Vietnamese, Cambodian, Lao, Hmong	05/02/2022	41.338741	73.117091	



**Table 1**  
**Summary of Consumption Advisory Sign Locations and Maintenance Activities**  
**Biota Consumption Advisory Outreach Annual Report**  
**Housatonic Rest of River - Connecticut**



Location Description	Location ID	Reach/ Tributary	Translations at Location	Most Recent Sign Installation Date	Coordinates <sup>1</sup>		Comments
					North	West	
Maples Boat Launch	121	16	English, Spanish	English - N/A Spanish - 10/25/2021	41.338111	73.121916	Found both English and Spanish signs on wood post at Maples Boat Launch in Shelton, CT. On The Maples Rd., off Indian Well Road, off Rt. 110.
Riverside Park	122	17	English, Spanish	English - 10/25/2021 Spanish - 10/25/2021	41.3236115	73.1007545	Found both English and Spanish signs on railing post at top of steps to river edge, just downstream of Derby Dam, Shelton, CT.
Derby Dam Area	123	17	English, Spanish	English - N/A Spanish - 10/25/2021	41.325955	73.100433	Found English, Spanish, and Vietnamese, Cambodian, Lao, Hmong signs on kiosk for Derby Dam in Derby, CT. Location was cut out.
Derby Dam Area	124	17	Vietnamese, Cambodian, Lao, Hmong	10/11/2021	41.325955	73.100433	
Hawkins Point	125	17	English, Spanish	English - N/A Spanish - N/A	41.315168	73.085269	Found both English and Spanish signs on telephone pole at O' Sullivan's Island Recreation Park and the Derby Greenway, Derby CT.

Notes:

<sup>1</sup> Units of Coordinates are in degrees, as measured with global positioning system-based Maps application.

\* Sign was replaced between the June 2023 and June 2024 sign inspections, when it was observed to be damaged/missing during a site visit.

N/A - Not Available, installation date prior to fall 2021

Reach Designations:

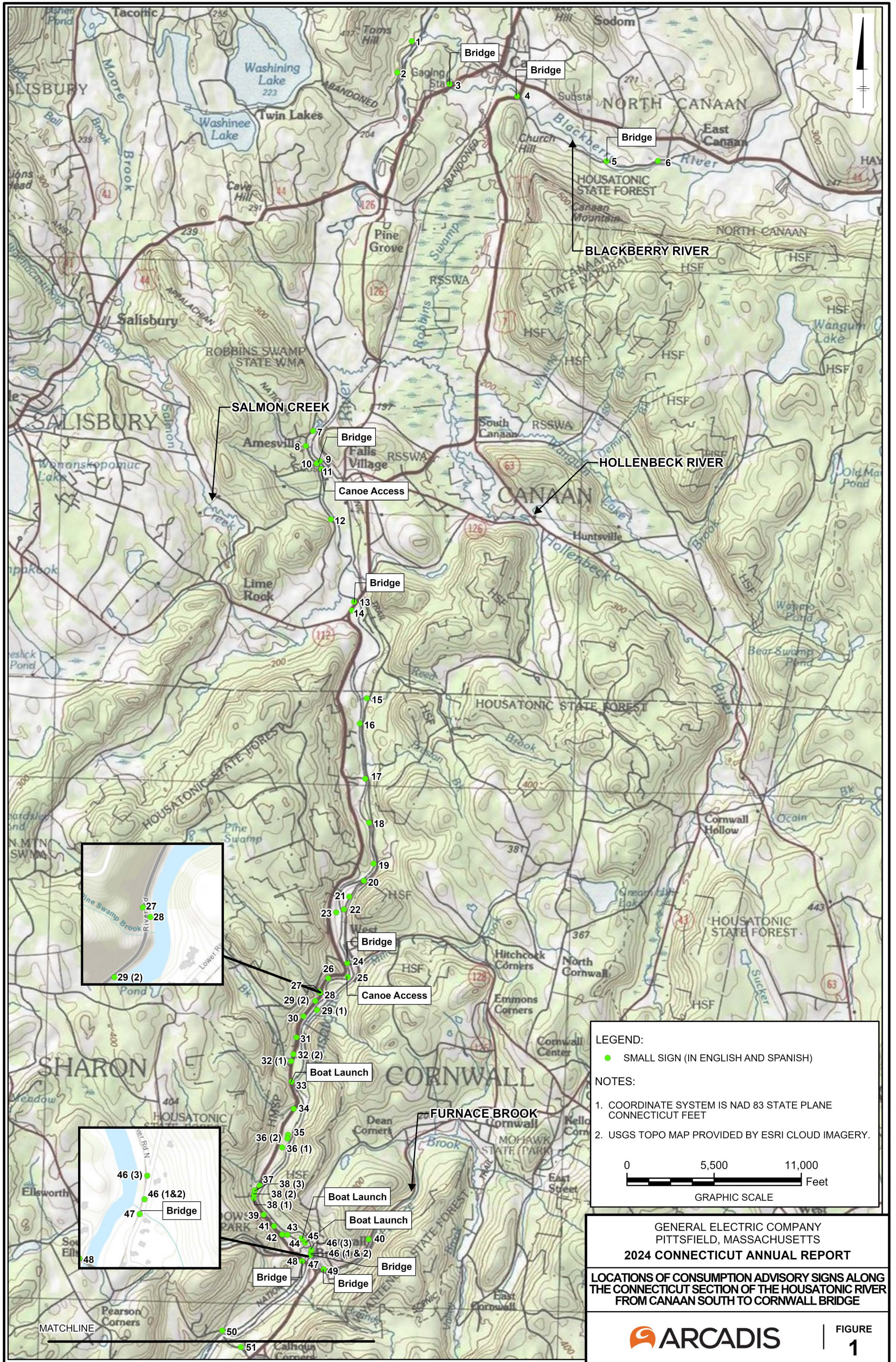
- Reach 10, Massachusetts/Connecticut border to Falls Village Dam
- Reach 11, Falls Village Dam to Cornwall Bridge
- Reach 12, Cornwall Bridge to Bulls Bridge Dam
- Reach 13, Bulls Bridge Dam to Bleachery Dam
- Reach 14, Bleachery Dam to Shepaug Dam (Lake Lillinonah)
- Reach 15, Shepaug Dam to Stevenson Dam (Lake Zoar)
- Reach 16, Stevenson Dam to Lake Housatonic/Derby Dam (Lake Housatonic)
- Reach 17, Lake Housatonic/Derby Dam to Long Island Sound

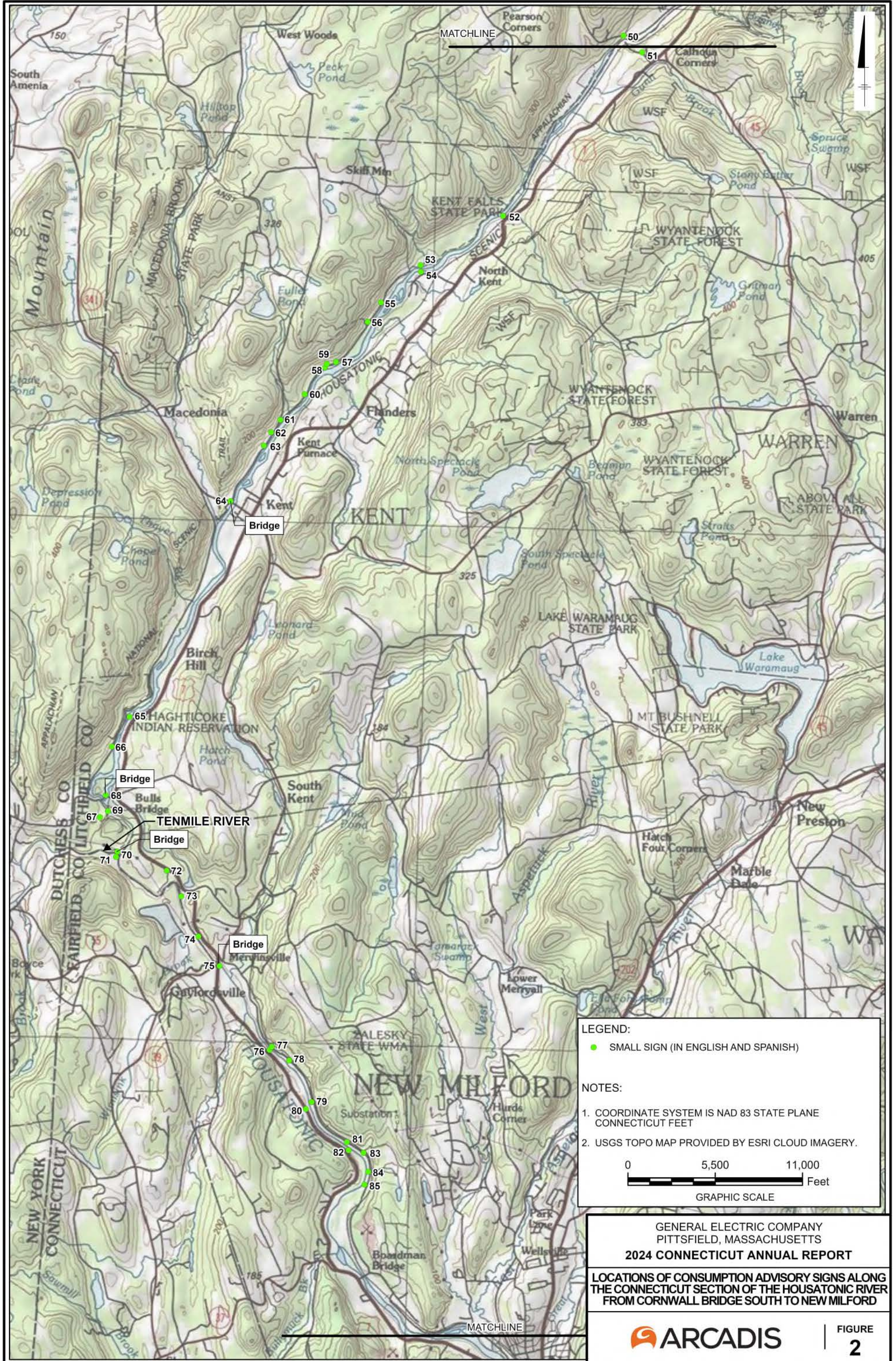
**Table 2**  
**Fishing License Agents Provided Consumption Advisory Pamphlet**  
**Biota Consumption Advisory Outreach Annual Report**  
**Housatonic Rest of River - Connecticut**

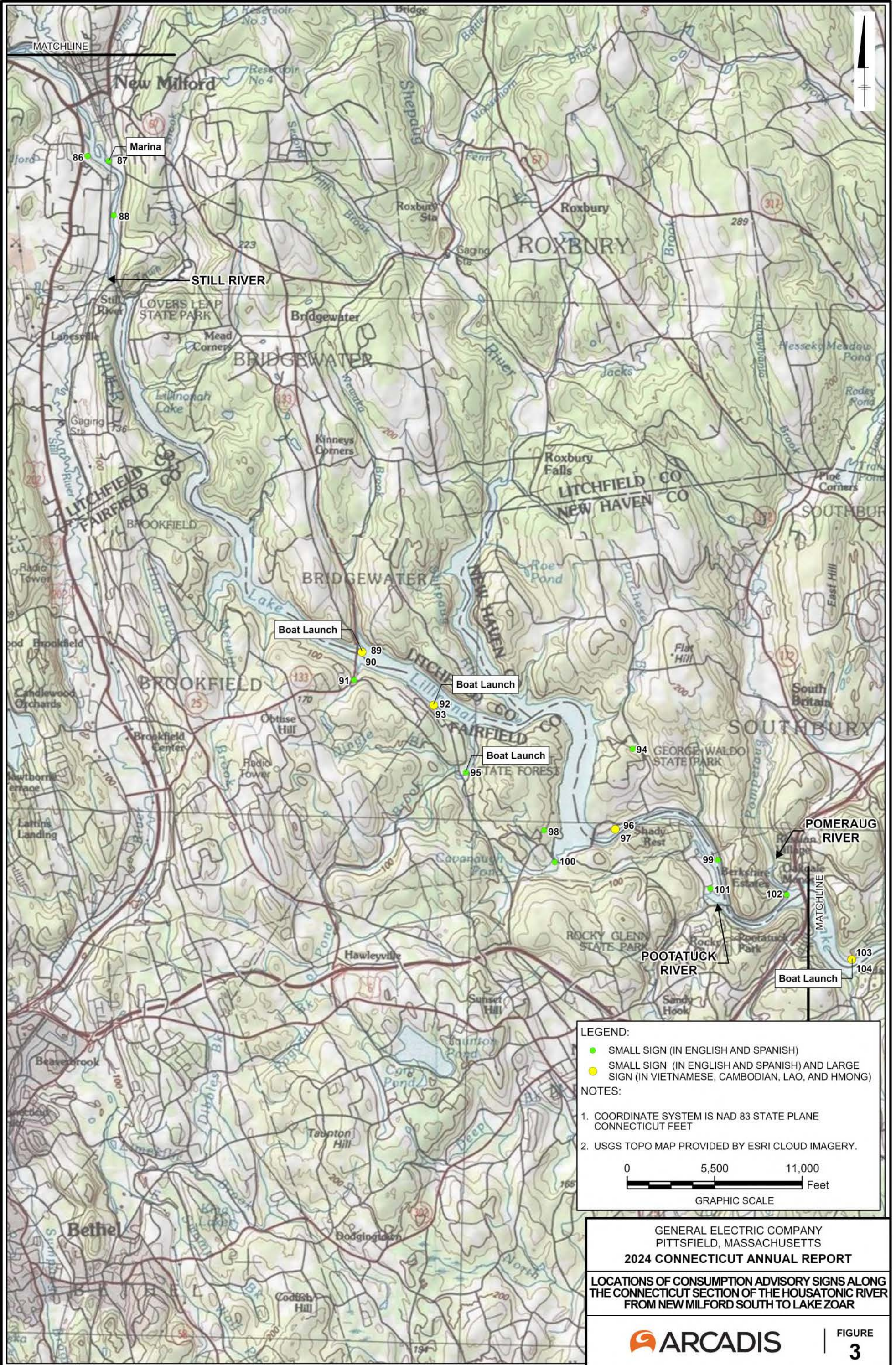


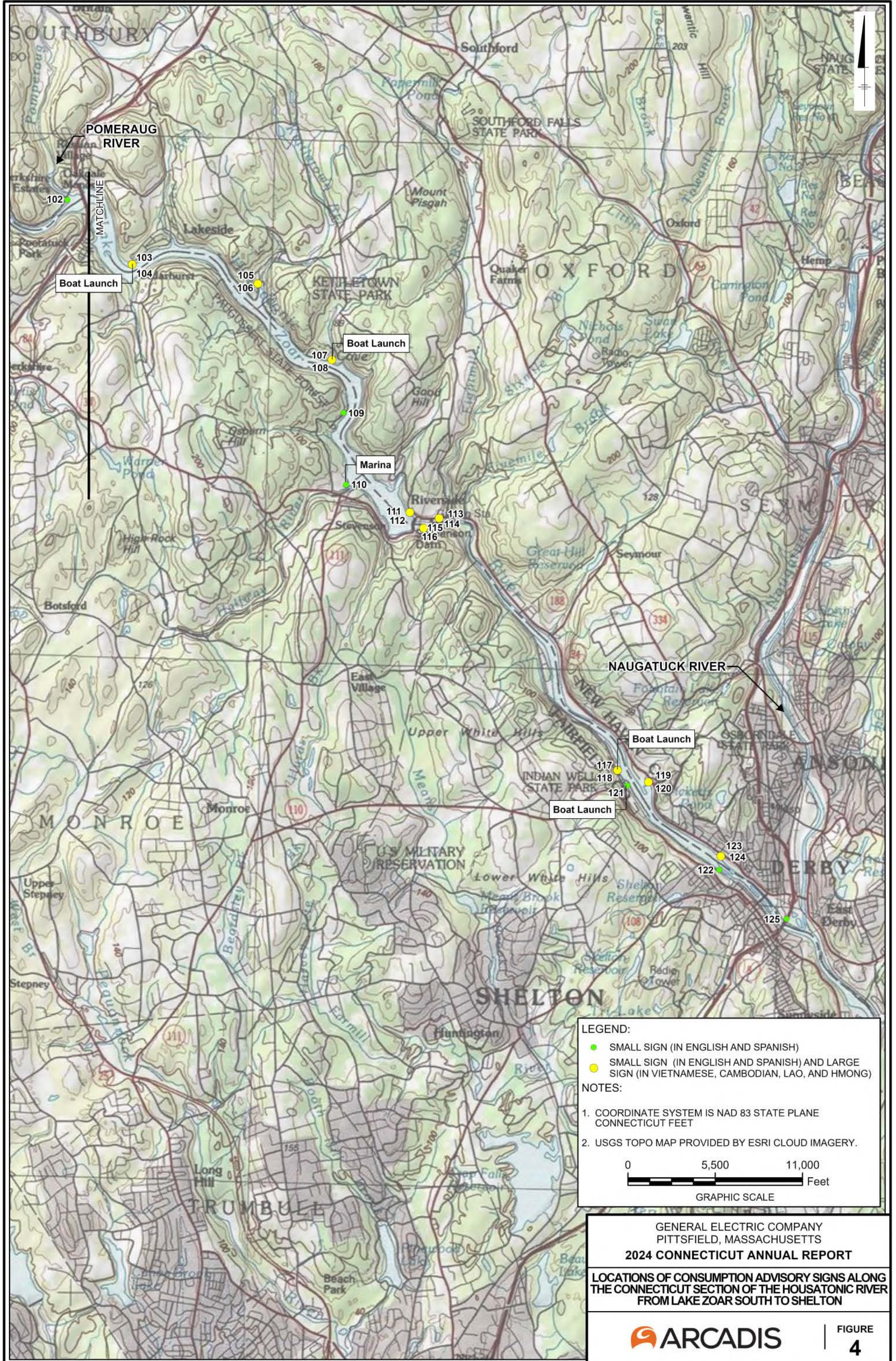
County	Business Name	Business Address
Fairfield	Bass Pro Outdoor World LLC	1 Bass Pro Dr., Bridgeport, Connecticut, 06608
Fairfield	Brookfield Town Clerk	100 Pocono Rd., Brookfield, Connecticut, 06804
Fairfield	Candlewood Bait & Tackle	36 Tamarack Ave., Danbury, Connecticut, 06811
Fairfield	Dick's Sporting Goods #1402	444 Connecticut Ave., Norwalk, Connecticut, 06854
Fairfield	Dick's Sporting Goods #612	7 Backus Ave., Danbury, Connecticut, 06810
Fairfield	Fisherman's World	2 Fort Point St., Norwalk, Connecticut, 06855
Fairfield	Monroe Town Clerk	7 Fan Hill Rd., Monroe, Connecticut, 06468
Fairfield	Orbit Marine Sports Center Inc.	3273 Fairfield Ave., Bridgeport, Connecticut, 06605
Fairfield	Pete's Place	124 Jefferson St., Stamford, Connecticut, 06902
Fairfield	Shelton Town Clerk	54 Hill St., Shelton, Connecticut, 06484
Fairfield	Sherman Town Clerk	9 Route 39 N, Sherman, Connecticut, 06784
Fairfield	Stratford Town Clerk	2725 Main St., Stratford, Connecticut, 06615
Fairfield	Walmart #2163	465 Bridgeport Ave., #2163, Shelton, Connecticut, 06484
Fairfield	Walmart #3543	67 Newtown Rd., Danbury, Connecticut, 06810
Litchfield	Back To Basics	31 Main St., Terryville, Connecticut, 06786
Litchfield	Canaan Town Clerk	108 Main St., Falls Village, Connecticut, 06031
Litchfield	Cornwall Town Clerk	26 Pine St., Cornwall, Connecticut, 06753
Litchfield	Deep Western District Hq	2065 Thomaston Rd., Watertown, Connecticut, 06795
Litchfield	Jim's Bait & Tackle	391 Norfolk Rd., East Canaan, Connecticut, 06024
Litchfield	Kent Town Clerk	41 Kent Green Blvd., Kent, Connecticut, 06757
Litchfield	New Milford Town Clerk	10 Main St., New Milford, Connecticut, 06776
Litchfield	Salisbury Town Clerk	27 Main St., Salisbury, Connecticut, 06068
Litchfield	Sanzeri's	288 S Main St., Thomaston, Connecticut, 06787
Litchfield	Torrington Wireless	246 N Elm St., Torrington, Connecticut, 06790
Litchfield	Upcountry Sportfishing	352 Main St., New Hartford, Connecticut, 06057
Litchfield	Walmart #2144	970 Torrington St., Torrington, Connecticut, 06790
Litchfield	Walmart #3546	164 Danbury Rd., New Milford, Connecticut, 06776
New Haven	Captain Morgan's Bait & Tackle	21 Boston Post Rd., Madison, Connecticut, 06443
New Haven	Dee's Bait & Tackle	93 Clay St., New Haven, Connecticut, 06513
New Haven	Derby Town Clerk	1 Elizabeth St., Derby, Connecticut, 06418
New Haven	Dick's Sporting Goods #1246	411 Universal Dr. N, North Haven, Connecticut, 06473
New Haven	Dick's Sporting Goods #1389	275 Union St., Waterbury, Connecticut, 06706
New Haven	Dick's Sporting Goods #169	470 Lewis Ave., Meriden, Connecticut, 06451
New Haven	Dick's Sporting Goods #282	1201 Boston Post Rd., Milford, Connecticut, 06460
New Haven	Fisherman's Paradise LLC	38 Bridgeport Ave., Milford, Connecticut, 06460
New Haven	Milford Town Clerk	70 W River St., Milford, Connecticut, 06460
New Haven	New England Diving Of Ct	1060 S Colony Rd., Wallingford, Connecticut, 06492
New Haven	Oxford Town Clerk	486 Oxford Rd., Oxford, Connecticut, 06478
New Haven	Seymour Town Clerk	1 First St., Seymour, Connecticut, 06483
New Haven	Walmart #2284	1100 New Haven Rd., Naugatuck, Connecticut, 06770
New Haven	Walmart #2371	844 N Colony Rd., Wallingford, Connecticut, 06492
New Haven	Walmart #3548	910 Wolcott St., Waterbury, Connecticut, 06705
New Haven	Walmart #3803	515 Saw Mill Rd., West Haven, Connecticut, 06516
New Haven	Walmart #5294	1365 Boston Post Rd., Milford, Connecticut, 06460

# Figures









# Attachment A

## Connecticut Fish Consumption Advisory Signs



# Warning to People Who Fish

Although many fish in Connecticut are safe and healthy to eat, some fish from Connecticut waters have dangerous chemicals in them.

## Housatonic River Upstream of the Derby Dam

### Includes:

- **Lake Zoar**
- **Lake Lillinonah**
- **Lake Housatonic**

Pregnant women, women who plan to become pregnant and children under six should not eat fish from the Housatonic River upstream of the Derby Dam. Others should not eat Catfish, Carp, Eels or Trout from the Housatonic River. People other than pregnant women and children under six should eat no more than one meal every two months of Bass, White Perch and Bullheads.

If you follow this advice, you and your family will be safe and healthy eating fish caught in Connecticut waters.

For more information, call the Connecticut Department of Public Health (860) 509-7742, or the Department of Environmental Protection (860) 424-3474.

*Warning to Fishermen and Their Families* has been produced as a collaborative project of Connecticut's Department of Public Health and Environmental Protection.



Keeping Connecticut Healthy



# AVISO A TODAS LAS PERSONAS QUE PESCAN

A pesar de que la mayoría de los peces de Connecticut son seguros y saludables para consumir, existen algunos que poseen peligrosos químicos en ellos.

## El Río Housatonic

(que se encuentra corriente arriba del Derby Dam)

### Incluidos:

- El lago Zoar
- El lago Lillinonah
- El Lago Housatonic

-Mujeres embarazadas, o mujeres que planean estarlo y niños menores de seis años **No deberían comer peces** de las agua del Río Housatonic que esta corriente arriba del Derby Dam.

-Todas las demás personas no deben comer pez gato, carpas, truchas de el Río Housatonic.

-Todos los demás excepto mujeres embarazadas y niños menores de seis años pueden comer no mas una vez cada dos meses del Bass, La trucha Blanca y el Bullheads.

-Para mas detalles para peces libre de riesgos para consumo que no están considerados en este aviso, consulte su Guía de Pescadores de DEP.

**Si se siguen estos avisos, tanto usted como su familia estarán libres de riesgos y saludables cuando coman de los peces atrapados en las agua de Connecticut.**

Para mas información, comuníquese con el Departamento de Salud Publica al (860) 509-7742 o al Departamento de Protección del Medio Ambiente al (860) 424-3474.



*Warning to People Who Fish: Connecticut Rivers and Lakes - Statewide* has been produced as a collaborative project of Connecticut's Departments of Public Health and Environmental Protection.



### Ceeb Toom Txog Cov Neeg Nuv Tsēs

Muaj ntses ntau ntau nyob hauv Connecticut zoo heev rau cov neeg noj. Tab sis muaj ib cov ntses nyob rau hauv tus dej Connecticut noj tsis tau rau qhov muaj tshuaj ntau yam ntwš mus rau hauv tus dej.

#### Housatonic River Nyob saum cov tsag dej (Derby Dam)

##### Muaj deb qho chaw xws li nram no:

- \*Lake Zoar
- \*Lake Lillinah
- \*Lake Housatonic

Swsis cov poj niam uas muaj me nyuam nyob hauv plab thiab cov me nyuam uas muaj nhub nyooq qis tshaj rau xyoo rov hauv yuav noj tsis tau cov ntses uas nyob ntawm qhov tsam dej (Derby Dam) uashu ua Housatonic River. Cov ntses uas noj tsis tau nyob rau hauv Housatonic muaj raws li nram no ntses tuaj kub, ntses pam nais, ntses nab, trout. Cov poj niam uas tab tom muaj me nyuam nyob hauv plab los yog cov me nyuam uas muaj hnub nyooq qis dua rau xyoo rov hauv. Txwv tsis pub noj cov ntses uas nyob hauv tus dej Housatonic. Noj tshaj ib pluag nyob rau hauv ob lub hlis twg. Ntses txajj (Bass) ntses dawb (White Perch) ntses tuaj kub (Bullheads).

Yog hais tias koj thiab koj tsev neeg mloog lus los yog ua raws lik cov lus uas tau hais tas los saum no. Koj tsev neeg yuav tsis tau tej kab mob. Koj tsev neeg yua tsib kev noj qab haus huv thiab kaj siab lug.

Uas hais txog noj cov ntses nyob hauv Connecticut River. Yog leej twg xav paub ntau tshaj nov no hu tau rau Connecticut Department of Public Health (860) 509-7742, or the Department of Environmental Protection (860) 424-3474.

### ຄຳຕັກເຕືອນປະຊາຊົນຜູ້ທ່າປາ

ເຖິງແມ່ນວ່າມີປ່າໄຫລຊະນິດໃນຮີດຖອນເນັກຕິເກັດທີ່ນັດໄປຢ່າງຢອດໄພ ແລະໂຕ້ສະພາບແຂງແຮງດີ, ແຕ່ວ່າຍັງມີປ່າໄຫລຊະນິດອື່ນໄດ້ຈາກແມ່ນ້ຳໃນຮີດຖອນເນັກຕິເກັດຊຶ່ງມີສາຍຕິດຕໍ່ກັບປ່າງອ້າງຕໍ່ເປັນເນື້ອຂອງພວກເຂົາ.

#### ແມ່ນ້ຳ ເທົ່າສະໂຕນິກ (Housatonic)

ລ່ອງຕາມລ່າມແຂດເດີເຣີ (Derby)

ຮວມທັງ:

- \* ບີ້ງໂຊ (Lake Zoar)
- \* ບີ້ງ ລິລິນອາ (Lake Lillinah)
- \* ບີ້ງ ເທົ່າສະໂຕນິກ (Lake Housatonic)

ຜູ້ບຸກຄົນ ຫຼື ຜູ້ບຸກຄົນອື່ນ ແລະ ຕົວຕົນອື່ນ ທ່ານຖືກປ້ອງກັນຫຼື ບໍ່ມີທາງມາໄດ້ຈາກຕາມລ່າມແມ່ນ້ຳ ເທົ່າສະໂຕນິກ ໃນການໄຂ່ຂະເດຣດເດີເຣີ. ບາດໍາອັນບໍ່ດວນກັນຢ່າກິດ, ຢ່າໃນ, ອຸງແລະ ຢ່າຫວັດຫາມາໄດ້ຈາກ ນັ້ນເທົ່າສະໂຕນິກ. ບາດໍາອັນບໍ່ດວນກັນຢ່າເບັ່ສ, ຢ່າໂຕ້ເພີດ ແລະ ຢ່າໃນເຫດຫຼາຍກວ່າມີຄຳຊ່ອງຊ່ອງເດືອນ.

ຖ້າທ່ານປະຕິບັດຕາມຄຳຊ່ອງຂອງເພີດ ແລະ ຄອບຄົວຂອງທ່ານ ແລະ ທ່ານຈະຢອດໄພ ແລະ ມີສະພາບແຂງແຮງດີໃນການກິນຢ່າຫາມາໄດ້ຈາກແມ່ນ້ຳໃນຮີດຖອນເນັກຕິເກັດ.

ຖ້າທ່ານຕ້ອງການລາຍລະອຽດຕື່ມອີກ, ກະນາໃຫ້ທ່ານຮຽນສາທາລະນະສຶກ ຂອງຮີດຖອນເນັກຕິເກັດ (ຖາລ) ໕໐໙-໗໗໔໔ ຫຼື ກະຊວງປ້ອງກັນສະພາບແວດລ້ອມ (ຖາລ) ໕໒໕-໓໕໗໕.

ຄຳຕັກເຕືອນດັ່ງກ່າວ ແລະ ຄອບຄົວຂອງທ່ານສາມາດຖືກແຕ່ງຕັ້ງຂຶ້ນດ້ວຍການຮີດຖອນເນັກຕິເກັດ ຢ່າງກວ້າງເວົ້າ ກະຊວງສາທາລະນະສຶກ ແລະ ກະຊວງປ້ອງກັນສະພາບແວດລ້ອມຂອງຮີດຖອນເນັກຕິເກັດ.

### ເສຣ໌ຄຼີບຸຣາຄາລຕີເກາະປຸຸງເຜີຍແຜ່ໃນຮີດຖອນເນັກຕິເກັດ ສ່ວນສະໂຕນິກ ແລະ ໂອຊາລຕີ

ຜູ້ຄົນຈຳນວນຫຼວງຫຼາຍໃນລັດ ຕິເສດສະໂຕນິກ ແລະ ໂອຊາລຕີ ໃນລັດຄັດສະເຕັດສະໂຕນິກ ທີ່ຮີດຖອນເນັກຕິເກັດ ທີ່ຮີດຖອນເນັກຕິເກັດ ແລະ ໂອຊາລຕີ ທີ່ຮີດຖອນເນັກຕິເກັດ ທີ່ຮີດຖອນເນັກຕິເກັດ ທີ່ຮີດຖອນເນັກຕິເກັດ

#### HOUSATONIC RIVER Upstream of the Derby Dam

- Includes
- LAKE ZOAR
- LAKE LILLINONAH
- LAKE HOUSATONIC

ຜູ້ຄົນຈຳນວນຫຼວງຫຼາຍໃນລັດ ຕິເສດສະໂຕນິກ ແລະ ໂອຊາລຕີ ໃນລັດຄັດສະເຕັດສະໂຕນິກ ທີ່ຮີດຖອນເນັກຕິເກັດ ທີ່ຮີດຖອນເນັກຕິເກັດ ທີ່ຮີດຖອນເນັກຕິເກັດ ທີ່ຮີດຖອນເນັກຕິເກັດ ທີ່ຮີດຖອນເນັກຕິເກັດ ທີ່ຮີດຖອນເນັກຕິເກັດ ທີ່ຮີດຖອນເນັກຕິເກັດ ທີ່ຮີດຖອນເນັກຕິເກັດ ທີ່ຮີດຖອນເນັກຕິເກັດ ທີ່ຮີດຖອນເນັກຕິເກັດ ທີ່ຮີດຖອນເນັກຕິເກັດ

### Những Ai Hay Đi Câu Cá Bắt Cá Lưu Ý

Mặc dù nhiều loại cá ở Connecticut an toàn để ăn nhưng có vài loại cá đã bị nhiễm độc khi bắt ở sông hồ Connecticut có tên sau đây:

#### Sông Housatonic

- Đầu nguồn nước của đập Derby Dam
- Gồm cả:
- Hồ Zoar
- Hồ Lillinah
- Hồ Housatonic

Đàn bà có mang hay dự tính có con hoặc trẻ em dưới sáu tuổi không được ăn các loại cá sống ở sông Housatonic đầu nguồn của đập nước Derby Dam. Các mọi người khác không được ăn Catfish ( cá tra), Carp ( cá chép), lươn hoặc Trout ở sông Housatonic. Các mọi người khác có thể ăn hai tháng một lần cá loại cá Bass, White Perch và Bullheads ( cá trê đầu lớn).

Quý vị theo sự chỉ dẫn ở trên, về việc ăn các loại cá bắt được ở các sông hồ tại Connecticut thì sẽ an toàn cho quý vị và gia đình.

Cần biết thêm chi tiết, hãy gọi Connecticut Department of Public Health ( 860) 509-7742, hay the Department of Environmental Protection ( 860) 424-3474.

Tờ lưu ý này cho các người đi câu cá và gia đình được làm ra do sự hợp tác của Connecticut Department of Public Health và Department of Environmental Protection.

*Warning to Fishermen and Their Families* has been produced as a collaborative project of Connecticut's Department of Public Health and Environmental Protection.



Keeping Connecticut Healthy



# Attachment B

**2024 Consumption Advisory Sign Photographic Log**

## PHOTOGRAPH LOG

Housatonic River  
 2024 Biota Consumption Advisory Sign Maintenance  
 Housatonic Rest of River - Connecticut



**Site Name:**  
 Near old bridge abutments

**Site Location:**  
 1

**Date Photograph Taken:**  
 June 21, 2024

**Comments:**  
 Found English sign past old bridge abutments on large tree off Weatogue Rd in Salisbury, CT. Replaced Spanish sign on same tree.



**Site Name:**  
 Fire dept. pull off

**Site Location:**  
 2

**Date Photograph Taken:**  
 June 21, 2024

**Comments:**  
 Found both English and Spanish signs next to fire department water hookup on Weatogue Rd in Salisbury, CT. Location was cut out so that signs could be seen.

**PHOTOGRAPH LOG**

Housatonic River  
 2024 Biota Consumption Advisory Sign Maintenance  
 Housatonic Rest of River - Connecticut



**Site Name:**  
 At Rte 44 bridge

**Site Location:**  
 3

**Date Photograph Taken:**  
 June 21, 2024

**Comments:**  
 Found both English and Spanish signs on telephone pole next to bridge off Church St./Rt. 44 in North Canaan, CT. Location needed some cutting.



**Site Name:**  
 At Rte 7 bridge

**Site Location:**  
 4

**Date Photograph Taken:**  
 June 21, 2024

**Comments:**  
 Found both English and Spanish signs on telephone pole adjacent to bridge at corner of Rt. 7 and Lower Rd. in North Canaan, CT. Location needed some cutting.

## PHOTOGRAPH LOG

Housatonic River  
 2024 Biota Consumption Advisory Sign Maintenance  
 Housatonic Rest of River - Connecticut



**Site Name:**  
 At lower road bridge

**Site Location:**  
 5

**Date Photograph Taken:**  
 June 21, 2024

**Comments:**  
 Found both English and Spanish signs on telephone pole off southeast corner of bridge on Lower Rd. in North Canaan, CT. Location was cut out so that signs could be seen.



**Site Name:**  
 At blast furnace historic site

**Site Location:**  
 6

**Date Photograph Taken:**  
 June 21, 2024

**Comments:**  
 Found both English and Spanish signs on tree near Blackberry River at Beckley Iron Furnace State Park. Park just before bridge and walk to bottom of falls in North Canaan, CT.

## PHOTOGRAPH LOG

Housatonic River  
 2024 Biota Consumption Advisory Sign Maintenance  
 Housatonic Rest of River - Connecticut

	<p><b>Site Name:</b> Great falls upper parking</p> <p><b>Site Location:</b> 7</p> <p><b>Date Photograph Taken:</b> June 21, 2024</p> <p><b>Comments:</b> Replaced both English and Spanish signs on large tree at end of Great Falls View Parking Lot off Housatonic River Rd., in Salisbury, CT.</p>
---	---

	<p><b>Site Name:</b> Lower great falls parking</p> <p><b>Site Location:</b> 8</p> <p><b>Date Photograph Taken:</b> June 21, 2024</p> <p><b>Comments:</b> Found English and Spanish signs on large tree at Lower Great Falls Pull-Off on Housatonic River Rd., in Salisbury, CT.</p>
--	---



## PHOTOGRAPH LOG

Housatonic River  
 2024 Biota Consumption Advisory Sign Maintenance  
 Housatonic Rest of River - Connecticut

	<p><b>Site Name:</b>        Telephone pole east side of bridge</p> <p><b>Site Location:</b>        9</p> <p><b>Date Photograph Taken:</b>        June 21, 2024</p> <p><b>Comments:</b>        Found English and Spanish signs on telephone pole near northeast corner of Falls River Bridge off Water St. in Falls Village, CT.</p>
---	---

	<p><b>Site Name:</b>        Pull off above bridge</p> <p><b>Site Location:</b>        10</p> <p><b>Date Photograph Taken:</b>        June 21, 2024</p> <p><b>Comments:</b>        Found both English and Spanish signs on tree at pull-off at Falls Mountain Rd. and Dugway Rd. in Salisbury, CT.</p>
--	---

**PHOTOGRAPH LOG**

Housatonic River  
 2024 Biota Consumption Advisory Sign Maintenance  
 Housatonic Rest of River - Connecticut



**Site Name:**  
 Canoe access kiosk

**Site Location:**  
 11

**Date Photograph Taken:**  
 June 21, 2024

**Comments:**  
 Found both English and Spanish signs on Falls Village Canoe access kiosk off Dugway Rd. in Salisbury, CT.



**Site Name:**  
 D.S. canoe access pull off

**Site Location:**  
 12

**Date Photograph Taken:**  
 June 21, 2024

**Comments:**  
 Found both English and Spanish signs on large tree adjacent to pull-off on Dugway Rd. in Salisbury, CT.

**PHOTOGRAPH LOG**

Housatonic River  
 2024 Biota Consumption Advisory Sign Maintenance  
 Housatonic Rest of River - Connecticut

	<p><b>Site Name:</b>                  Posts along corn field</p> <p><b>Site Location:</b>                  13</p> <p><b>Date Photograph Taken:</b>                  June 21, 2024</p> <p><b>Comments:</b>                  Found both English and Spanish signs on large post near southwest corner of bridge on Rt. 7 in Salisbury, CT.</p>
---	--

	<p><b>Site Name:</b>                  At kiosk DS RT 7, 112 bridge</p> <p><b>Site Location:</b>                  14</p> <p><b>Date Photograph Taken:</b>                  June 21, 2024</p> <p><b>Comments:</b>                  Found both English and Spanish signs on post of Appalachian Trail marker (southbound) at pull-off off on Rt. 7 in Salisbury, CT.</p>
--	---

**PHOTOGRAPH LOG**

Housatonic River  
2024 Biota Consumption Advisory Sign Maintenance  
Housatonic Rest of River - Connecticut



**Site Name:**  
Pull off above reed brook

**Site Location:**  
15

**Date Photograph Taken:**  
June 21, 2024

**Comments:**  
Found both English and Spanish signs, located on tree at start of footpath adjacent to pull-off on River Road in Cornwall, CT. Location needed some cutting.



**Site Name:**  
Tree below RR crossing


**Site Location:**  
16

**Date Photograph Taken:**  
June 21, 2024

**Comments:**  
Found both English and Spanish signs on tree near river adjacent to pull-off near railroad crossing on River Rd. in Cornwall, CT. Location needed some cutting.

## PHOTOGRAPH LOG

Housatonic River  
 2024 Biota Consumption Advisory Sign Maintenance  
 Housatonic Rest of River - Connecticut

	<p><b>Site Name:</b>        Tree across from Indian Weir-        River Road Cornwall</p> <p><b>Site Location:</b>        17</p> <p><b>Date Photograph Taken:</b>        June 20, 2024</p> <p><b>Comments:</b>        Found both English and Spanish signs on large tree overhanging river, adjacent to pull-off near railroad crossing on River Rd. in Cornwall, CT.</p>
---	--

	<p><b>Site Name:</b>        Pull off east side of trail</p> <p><b>Site Location:</b>        18</p> <p><b>Date Photograph Taken:</b>        June 20, 2024</p> <p><b>Comments:</b>        Replaced both English and Spanish signs on tree immediately adjacent to original location, adjacent to small pull-off on River Rd. in Cornwall, CT. Original tree trunk broke off.</p>
--	--

**PHOTOGRAPH LOG**

Housatonic River  
 2024 Biota Consumption Advisory Sign Maintenance  
 Housatonic Rest of River - Connecticut



**Site Name:**  
 Large pull off along river

**Site Location:**  
 19

**Date Photograph Taken:**  
 June 20, 2024

**Comments:**  
 Found both English and Spanish signs on tree adjacent to large pull-off on River Rd. in Cornwall, CT.



**Site Name:**  
 Pull off at old bridge abutments

**Site Location:**  
 20

**Date Photograph Taken:**  
 June 20, 2024

**Comments:**  
 Found Spanish sign on large tree adjacent to pull-off on River Rd. in Cornwall, CT. Replaced English sign on same tree.

**PHOTOGRAPH LOG**

Housatonic River  
2024 Biota Consumption Advisory Sign Maintenance  
Housatonic Rest of River - Connecticut



**Site Name:**  
Third pull off on River Rd.

**Site Location:**  
21

**Date Photograph Taken:**  
June 20, 2024

**Comments:**  
Found English and Spanish signs on tree adjacent to third pull-off near field on River Rd. in Cornwall, CT.



**Site Name:**  
First pull off on River Rd.

**Site Location:**  
22

**Date Photograph Taken:**  
June 20, 2024

**Comments:**  
Found both English and Spanish signs on post at first pull-off on River Rd. in Cornwall, CT.

## PHOTOGRAPH LOG

Housatonic River  
 2024 Biota Consumption Advisory Sign Maintenance  
 Housatonic Rest of River - Connecticut

	<p><b>Site Name:</b> Elms North Parking</p> <p><b>Site Location:</b> 23</p> <p><b>Date Photograph Taken:</b> June 20, 2024</p> <p><b>Comments:</b> Found both English and Spanish signs on post at end of parking loop off Rt. 7 in Sharon, CT. After pavement drive across field to opening in hedgerow, signs are on trail to the river.</p>
---	--

	<p><b>Site Name:</b> Mill River bridge</p> <p><b>Site Location:</b> 24</p> <p><b>Date Photograph Taken:</b> June 20, 2024</p> <p><b>Comments:</b> Found both English and Spanish signs on telephone pole at corner of Lower River Rd. and West Cornwall covered bridge in West Cornwall, CT.</p>
--	--



**PHOTOGRAPH LOG**

Housatonic River  
2024 Biota Consumption Advisory Sign Maintenance  
Housatonic Rest of River - Connecticut



**Site Name:**  
Garbage pool

**Site Location:**  
25

**Date Photograph Taken:**  
June 20, 2024

**Comments:**  
Found both English and Spanish signs on tree at "The Bend" canoe access launch off Lower River Rd. in West Cornwall, CT. Location needed some cutting.



**Site Name:**  
Pull off above fly section

**Site Location:**  
26

**Date Photograph Taken:**  
June 20, 2024

**Comments:**  
Found both English and Spanish signs on tree adjacent to pull-off on Rt. 7 just northeast of Pine Swamp Brook in Sharon, CT.

**PHOTOGRAPH LOG**

Housatonic River  
 2024 Biota Consumption Advisory Sign Maintenance  
 Housatonic Rest of River - Connecticut



**Site Name:**  
 Route 7 pull off, after Pine  
 Swamp Brook

**Site Location:**  
 27

**Date Photograph Taken:**  
 June 20, 2024

**Comments:**  
 Found both English and Spanish  
 signs on tree at Rt. 7 pull-off just  
 after Pine Swamp Brook,  
 adjacent to pull-off on non-river  
 side of road, in Sharon, CT.



**Site Name:**  
 Pine Swamp Brook

**Site Location:**  
 28

**Date Photograph Taken:**  
 June 20, 2024

**Comments:**  
 Found English and Spanish  
 signs on tree across from Rt. 7  
 one car pull-off just after Pine  
 Swamp Brook in Sharon, CT.  
 Location needed some cutting.

## PHOTOGRAPH LOG

Housatonic River  
 2024 Biota Consumption Advisory Sign Maintenance  
 Housatonic Rest of River - Connecticut

	<p><b>Site Name:</b> Trinity pull off</p> <p><b>Site Location:</b> 29(1)</p> <p><b>Date Photograph Taken:</b> June 20, 2024</p> <p><b>Comments:</b> Found both English and Spanish signs on large pine tree adjacent to Trinity Riverside Trailhead at end of Lower River Rd. in Cornwall, CT.</p>
---	--

	<p><b>Site Name:</b> Route 7 pull off</p> <p><b>Site Location:</b> 29(2)</p> <p><b>Date Photograph Taken:</b> June 20, 2024</p> <p><b>Comments:</b> Found English and Spanish signs on tree near river, along Rt. 7 in Sharon, CT. Tree with signs is toward the bottom of the riverbank.</p>
--	---

**PHOTOGRAPH LOG**

Housatonic River  
 2024 Biota Consumption Advisory Sign Maintenance  
 Housatonic Rest of River - Connecticut



**Site Name:**  
 In front of Clarkes

**Site Location:**  
 30

**Date Photograph Taken:**  
 June 20, 2024

**Comments:**  
 Found both English and Spanish signs on tree across Rt. 7 from Clarke Outdoors building in Sharon, CT.



**Site Name:**  
 Border of TMA fly section

**Site Location:**  
 31

**Date Photograph Taken:**  
 June 20, 2024

**Comments:**  
 Found English and Spanish signs across from Rt. 7 pull-off at start of Trout Management Area on tree in Sharon, CT.

**PHOTOGRAPH LOG**

Housatonic River  
2024 Biota Consumption Advisory Sign Maintenance  
Housatonic Rest of River - Connecticut



**Site Name:**  
Pull off right before Carse Brook

**Site Location:**  
32(1)

**Date Photograph Taken:**  
June 20, 2024

**Comments:**  
Found both Spanish and English signs on tree before Carse Brook at Rt. 7 pull-off in Sharon, CT. Tree with signs is 50 feet into the woods.



**Site Name:**  
First pull off after Carse Brook

**Site Location:**  
32(2)

**Date Photograph Taken:**  
June 20, 2024

**Comments:**  
Found both Spanish and English signs on tree just after Carse Brook at Rt. 7 pull-off in Sharon, CT.

**PHOTOGRAPH LOG**

Housatonic River  
 2024 Biota Consumption Advisory Sign Maintenance  
 Housatonic Rest of River - Connecticut



**Site Name:**  
 Cellar hole

**Site Location:**  
 33

**Date Photograph Taken:**  
 June 20, 2024

**Comments:**  
 Found English and Spanish signs on tree at Cellar Hole boat launch pull-off on Rt. 7 in Sharon, CT. Location was cut out so that signs could be seen.



**Site Name:**  
 Pull off below cellar hole

**Site Location:**  
 34

**Date Photograph Taken:**  
 June 20, 2024

**Comments:**  
 Found both English and Spanish signs on tree at Rt. 7 pull-off with "No Swimming No Picnicking" sign in Sharon, CT.

## PHOTOGRAPH LOG

Housatonic River  
 2024 Biota Consumption Advisory Sign Maintenance  
 Housatonic Rest of River - Connecticut



**Site Name:**

End of campsites at meadows

**Site Location:**

35

**Date Photograph Taken:**

June 20, 2024

**Comments:**

Found both English and Spanish signs on tree at end of road, down path about 100 ft in Housatonic Meadows State Campground (take left at entry - all the way to end at trail) in Sharon, CT.



**Site Name:**

Housatonic Meadows campground

**Site Location:**

36(1)

**Date Photograph Taken:**

June 20, 2024

**Comments:**

Found Spanish and English signs on tree before cabins at Housatonic Meadows State Campground (take a left at entry) in Sharon, CT.

## PHOTOGRAPH LOG

Housatonic River  
 2024 Biota Consumption Advisory Sign Maintenance  
 Housatonic Rest of River - Connecticut

	<p><b>Site Name:</b>        Housatonic Meadows        campground</p> <p><b>Site Location:</b>        36(2)</p> <p><b>Date Photograph Taken:</b>        June 20, 2024</p> <p><b>Comments:</b>        Found Spanish and English        signs on tree at end of road past        cabins at Housatonic Meadows        State Campground (take a left at        entry - just after cabins before        end of road) in Sharon, CT.        Location needed some cutting.</p>
---	--


	<p><b>Site Name:</b>        In front of pine knob loop</p> <p><b>Site Location:</b>        37</p> <p><b>Date Photograph Taken:</b>        June 20, 2024</p> <p><b>Comments:</b>        Found both English and Spanish        signs on tree across Rt. 7 from        Pine Knob Loop Trailhead        Parking in Sharon, CT.</p>
--	--



**PHOTOGRAPH LOG**

Housatonic River  
 2024 Biota Consumption Advisory Sign Maintenance  
 Housatonic Rest of River - Connecticut

	<p><b>Site Name:</b> Dual pull off below pine knob</p> <p><b>Site Location:</b> 38(1)</p> <p><b>Date Photograph Taken:</b> June 20, 2024</p> <p><b>Comments:</b> Found English and Spanish signs on telephone pole adjacent to Rt. 7 pull-off just before Pine Knob Loop Trail in Sharon, CT.</p>
---	---

	<p><b>Site Name:</b> Dual pull off below pine knob</p> <p><b>Site Location:</b> 38(2)</p> <p><b>Date Photograph Taken:</b> June 20, 2024</p> <p><b>Comments:</b> Found English and Spanish signs on telephone pole just north of Rt. 7 pull-off before Pine Knob Loop Trail in Sharon, CT.</p>
--	--

## PHOTOGRAPH LOG

Housatonic River  
 2024 Biota Consumption Advisory Sign Maintenance  
 Housatonic Rest of River - Connecticut



**Site Name:**

Dual pull off below pine knob

**Site Location:**

38(3)

**Date Photograph Taken:**

June 20, 2024

**Comments:**

Found English and Spanish signs on tree just south of Pine Knob Loop Trail on west side of Rt. 7 in Sharon, CT. Location was cut out so that signs could be seen.



**Site Name:**

Second pull off upstream  
 Housatonic meadows

**Site Location:**

39

**Date Photograph Taken:**

June 20, 2024

**Comments:**

Found both English and Spanish signs on tree at pull-off on Rt. 7 in Sharon, CT.

## PHOTOGRAPH LOG

Housatonic River  
 2024 Biota Consumption Advisory Sign Maintenance  
 Housatonic Rest of River - Connecticut

	<p><b>Site Name:</b>          At roadside pull-off with picnic table</p> <p><b>Site Location:</b>          40</p> <p><b>Date Photograph Taken:</b>          June 20, 2024</p> <p><b>Comments:</b>          Found both English and Spanish signs on tree adjacent to pull-off w/ picnic tables on Furnace Brook Rd. in Cornwall, CT.</p>
---	---

	<p><b>Site Name:</b>          First pull off upstream Housatonic meadows</p> <p><b>Site Location:</b>          41</p> <p><b>Date Photograph Taken:</b>          June 20, 2024</p> <p><b>Comments:</b>          Found both English and Spanish signs on large pine tree at pull-off on Rt. 7, just north of Housatonic Meadows State Park in Sharon, CT.</p>
--	---

## PHOTOGRAPH LOG

Housatonic River  
 2024 Biota Consumption Advisory Sign Maintenance  
 Housatonic Rest of River - Connecticut

	<p><b>Site Name:</b> Housatonic meadows parking</p> <p><b>Site Location:</b> 42</p> <p><b>Date Photograph Taken:</b> June 19, 2024</p> <p><b>Comments:</b> Both signs and sign post were gone. Installed both English and Spanish signs on tree adjacent to parking lot area near the entrance to Housatonic Meadows State Park off Rt. 7 in Sharon, CT.</p>
---	--

	<p><b>Site Name:</b> Housatonic meadows water entry</p> <p><b>Site Location:</b> 43</p> <p><b>Date Photograph Taken:</b> June 19, 2024</p> <p><b>Comments:</b> Found both English and Spanish signs on tree just south of Housatonic Meadows State Park parking area, off Rt. 7 in Sharon, CT.</p>
--	--

**PHOTOGRAPH LOG**

Housatonic River  
 2024 Biota Consumption Advisory Sign Maintenance  
 Housatonic Rest of River - Connecticut



**Site Name:**  
 Boat launch Housatonic meadows

**Site Location:**  
 44

**Date Photograph Taken:**  
 June 19, 2024

**Comments:**  
 Found both English and Spanish signs on post near boat launch in Housatonic Meadows State Park off Rt. 7 in Sharon, CT.



**Site Name:**  
 Commercial boat launch

**Site Location:**  
 45

**Date Photograph Taken:**  
 June 19, 2024

**Comments:**  
 Found both English and Spanish signs on tree at commercial boat launch in Housatonic Meadows State Park at end of road off Rt. 7 in Sharon, CT.

**PHOTOGRAPH LOG**

Housatonic River  
 2024 Biota Consumption Advisory Sign Maintenance  
 Housatonic Rest of River - Connecticut



**Site Name:**  
 At bridge just above confluence with Housatonic River

**Site Location:**  
 46 (1&2)

**Date Photograph Taken:**  
 June 19, 2024

**Comments:**  
 Found 2 sets of English and Spanish signs on telephone pole just past Furnace Brook confluence at parking area off Popple Swamp Rd. in Cornwall Bridge, CT.



**Site Name:**  
 At bridge just above confluence with Housatonic River

**Site Location:**  
 46 (3)

**Date Photograph Taken:**  
 June 19, 2024

**Comments:**  
 Found both English and Spanish signs on large maple tree at the start of Lower River Rd., next to railroad tracks in Cornwall Bridge, CT.

**PHOTOGRAPH LOG**

Housatonic River  
2024 Biota Consumption Advisory Sign Maintenance  
Housatonic Rest of River - Connecticut



**Site Name:**  
Furnace Brook confluence

**Site Location:**  
47

**Date Photograph Taken:**  
June 19, 2024

**Comments:**  
Found both English and Spanish signs on telephone pole by Furnace Brook confluence bridge off Popple Swamp Rd. in Cornwall Bridge, CT.



**Site Name:**  
Underneath Cornwall bridge

**Site Location:**  
48

**Date Photograph Taken:**  
June 19, 2024

**Comments:**  
Found both English and Spanish signs at Francis L. Sheane Fly Fishing Area pull-off on River Rd, under Rt. 7 bridge in Sharon, CT.

## PHOTOGRAPH LOG

Housatonic River  
 2024 Biota Consumption Advisory Sign Maintenance  
 Housatonic Rest of River - Connecticut

	<p><b>Site Name:</b> Above Rte 4 bridge</p> <p><b>Site Location:</b> 49</p> <p><b>Date Photograph Taken:</b> June 19, 2024</p> <p><b>Comments:</b> Found both English and Spanish signs on tree at Furnace Brook Memorial pull-off on Rt. 4 just east of Cornwall Bridge, CT.</p>
---	---

	<p><b>Site Name:</b> End of River Rd trail head</p> <p><b>Site Location:</b> 50</p> <p><b>Date Photograph Taken:</b> June 19, 2024</p> <p><b>Comments:</b> Found both English and Spanish signs on tree at pull-off on River Rd., close to Appalachian Trail gate in Sharon, CT.</p>
--	--



**PHOTOGRAPH LOG**

Housatonic River  
 2024 Biota Consumption Advisory Sign Maintenance  
 Housatonic Rest of River - Connecticut



**Site Name:**  
 Gunn Brook Pull off

**Site Location:**  
 51

**Date Photograph Taken:**  
 June 19, 2024

**Comments:**  
 Replaced both English and Spanish signs on same tree at end of Swifts Bridge Rd. off Rt. 7 in Cornwall Bridge, CT.



**Site Name:**  
 Across from Kent Falls

**Site Location:**  
 52

**Date Photograph Taken:**  
 June 19, 2024

**Comments:**  
 Found both English and Spanish signs on tree across the railroad tracks and to the southwest of Kent Falls State Park off Rt. 7 in Kent, CT.

**PHOTOGRAPH LOG**

Housatonic River  
2024 Biota Consumption Advisory Sign Maintenance  
Housatonic Rest of River - Connecticut



**Site Name:**  
Footpath Kiosk End of River Rd

**Site Location:**  
53

**Date Photograph Taken:**  
June 19, 2024

**Comments:**  
Found both English and Spanish signs on Appalachian Trail kiosk at end of River Rd. in Kent, CT.



**Site Name:**  
North Kent Pool

**Site Location:**  
54

**Date Photograph Taken:**  
June 19, 2024

**Comments:**  
Found both English and Spanish signs on Housatonic River Wildlife Management Area kiosk at end of N Kent No 2 Rd. in Kent, CT.

**PHOTOGRAPH LOG**

Housatonic River  
 2024 Biota Consumption Advisory Sign Maintenance  
 Housatonic Rest of River - Connecticut

	<p><b>Site Name:</b> Footpath near culvert past gate</p> <p><b>Site Location:</b> 55</p> <p><b>Date Photograph Taken:</b> June 19, 2024</p> <p><b>Comments:</b> Found both English and Spanish signs on tree adjacent to footpath past Appalachian Trail gate on River Rd. in Kent, CT.</p>
---	---

	<p><b>Site Name:</b> Hiker pull off River Rd</p> <p><b>Site Location:</b> 56</p> <p><b>Date Photograph Taken:</b> June 19, 2024</p> <p><b>Comments:</b> Found both English and Spanish signs on tree adjacent to Appalachian Trail parking area on River Rd. in Kent, CT.</p>
--	---

## PHOTOGRAPH LOG

Housatonic River  
 2024 Biota Consumption Advisory Sign Maintenance  
 Housatonic Rest of River - Connecticut

	<p><b>Site Name:</b>        Long pull off River Rd</p> <p><b>Site Location:</b>        57</p> <p><b>Date Photograph Taken:</b>        June 19, 2024</p> <p><b>Comments:</b>        Found English and Spanish signs on large tree adjacent to pull-off on River Rd. in Kent, CT.</p>
---	---

	<p><b>Site Name:</b>        2 car pull off above island</p> <p><b>Site Location:</b>        58</p> <p><b>Date Photograph Taken:</b>        June 19, 2024</p> <p><b>Comments:</b>        Found both English and Spanish signs adjacent to 2 car pull-off on River Rd., on downstream end of two large islands in the Housatonic River, on large tree in Kent, CT.</p>
--	--

## PHOTOGRAPH LOG

Housatonic River  
 2024 Biota Consumption Advisory Sign Maintenance  
 Housatonic Rest of River - Connecticut



**Site Name:**  
 Island pull off near brook

**Site Location:**  
 59

**Date Photograph Taken:**  
 June 19, 2024

**Comments:**  
 Found both English and Spanish signs on tree adjacent to island pull-off on River Rd. in Kent, CT. Location is near small brook.



**Site Name:**  
 John Rodgers memorial

**Site Location:**  
 60

**Date Photograph Taken:**  
 June 19, 2024

**Comments:**  
 Found both English and Spanish signs on tree next to river adjacent to pull-off on River Rd. John Rodgers Memorial in Kent, CT.

**PHOTOGRAPH LOG**

Housatonic River  
 2024 Biota Consumption Advisory Sign Maintenance  
 Housatonic Rest of River - Connecticut



**Site Name:**  
 First pull off on River Rd

**Site Location:**  
 61

**Date Photograph Taken:**  
 June 18, 2024

**Comments:**  
 Found both English and Spanish signs on tree adjacent to pull-off on River Rd. in Kent, CT.



**Site Name:**  
 Large pull off before River Rd

**Site Location:**  
 62

**Date Photograph Taken:**  
 June 18, 2024

**Comments:**  
 Found English and Spanish signs on a telephone pole adjacent to pull-off on Skiff Mountain Rd. in Kent, CT. Location was cut out so that signs could be seen.

**PHOTOGRAPH LOG**

Housatonic River  
 2024 Biota Consumption Advisory Sign Maintenance  
 Housatonic Rest of River - Connecticut



**Site Name:**  
 Large log pull off

**Site Location:**  
 63

**Date Photograph Taken:**  
 June 18, 2024

**Comments:**  
 Found both English and Spanish signs on dead tree adjacent to pull-off on Skiff Mountain Rd. in Kent, CT.



**Site Name:**  
 341 bridge street bridge

**Site Location:**  
 64

**Date Photograph Taken:**  
 June 18, 2024

**Comments:**  
 Found both English and Spanish signs on tree under west side of Macedonia Rd. (Rt 341) bridge in Kent, CT. Park near trail off Skiff Mountain Rd. and walk under bridge.

**PHOTOGRAPH LOG**

Housatonic River  
 2024 Biota Consumption Advisory Sign Maintenance  
 Housatonic Rest of River - Connecticut



**Site Name:**  
 Pull off above Bulls Bridge

**Site Location:**  
 65

**Date Photograph Taken:**  
 June 18, 2024

**Comments:**  
 Found both English and Spanish signs on tree adjacent to pull-off on Rt. 7 north of Bulls Bridge in Kent, CT. Location was cut out so that signs could be seen.



**Site Name:**  
 Large pull off Schaghticoke Rd

**Site Location:**  
 66

**Date Photograph Taken:**  
 June 18, 2024

**Comments:**  
 Found both English and Spanish signs on large tree adjacent to barricaded pull-off off Schaghticoke Rd. in Kent, CT.



**PHOTOGRAPH LOG**

Housatonic River  
 2024 Biota Consumption Advisory Sign Maintenance  
 Housatonic Rest of River - Connecticut



**Site Name:**  
 Above Bulls Bridge kiosk

**Site Location:**  
 67

**Date Photograph Taken:**  
 June 18, 2024

**Comments:**  
 Replaced both English and Spanish signs on tree past information kiosk off Bulls Bridge Rd. on west side of Housatonic River in Kent CT.



**Site Name:**  
 Bulls Bridge Kiosk

**Site Location:**  
 68

**Date Photograph Taken:**  
 June 18, 2024

**Comments:**  
 Found English and Spanish signs at kiosk off Bulls Bridge Rd., just past covered bridge on west side of Housatonic River in Kent, CT.

**PHOTOGRAPH LOG**

Housatonic River  
 2024 Biota Consumption Advisory Sign Maintenance  
 Housatonic Rest of River - Connecticut



**Site Name:**  
 Bulls Bridge pool

**Site Location:**  
 69

**Date Photograph Taken:**  
 June 18, 2024

**Comments:**  
 Found both English and Spanish signs on tree near river. Park at Bulls Bridge and walk south down Appalachian Trail approx. 1,000 ft, Kent, CT.



**Site Name:**  
 Ten Mile River bridge

**Site Location:**  
 70

**Date Photograph Taken:**  
 June 18, 2024

**Comments:**  
 Found both English and Spanish signs on tree adjacent to Ten Mile River bridge. Park at Bulls Bridge and walk south on Appalachian Trail to the Homestead Trail (approx. 1 mile), in Kent, CT.

## PHOTOGRAPH LOG

Housatonic River  
 2024 Biota Consumption Advisory Sign Maintenance  
 Housatonic Rest of River - Connecticut

	<p><b>Site Name:</b> 10 Mile River Campsites</p> <p><b>Site Location:</b> 71</p> <p><b>Date Photograph Taken:</b> June 18, 2024</p> <p><b>Comments:</b> Found both English and Spanish signs on tree near Housatonic River at 10 Mile River Campsites. Park at Bulls Bridge and walk south on Appalachian Trail to the Homestead Trail (approx. 1 mile), over Ten Mile River bridge, in Sherman, CT.</p>
---	--

	<p><b>Site Name:</b> Gunns Eddy lot</p> <p><b>Site Location:</b> 72</p> <p><b>Date Photograph Taken:</b> June 18, 2024</p> <p><b>Comments:</b> Found both English and Spanish signs on post to left of gate at Gunns Eddy lot off Rt. 7 in New Milford, CT.</p>
--	---

**PHOTOGRAPH LOG**

Housatonic River  
2024 Biota Consumption Advisory Sign Maintenance  
Housatonic Rest of River - Connecticut



**Site Name:**  
First light power plant

**Site Location:**  
73

**Date Photograph Taken:**  
June 18, 2024

**Comments:**  
Found both English and Spanish signs on tree near river adjacent to First Light Power access off Rt. 7 in New Milford, CT.



**Site Name:**  
Pull off above Gaylordsville bridge

**Site Location:**  
74

**Date Photograph Taken:**  
June 18, 2024

**Comments:**  
Found both English and Spanish signs on tree adjacent to barricaded pull-off on Rt. 7 in New Milford, CT.

**PHOTOGRAPH LOG**

Housatonic River  
 2024 Biota Consumption Advisory Sign Maintenance  
 Housatonic Rest of River - Connecticut



**Site Name:**  
 Gaylordsville bridge

**Site Location:**  
 75

**Date Photograph Taken:**  
 June 18, 2024

**Comments:**  
 Found both English and Spanish signs on tree near bottom of parking lot on southeast corner of Gaylordsville Bridge, at the end of a short trail, in Gaylordsville, CT. Location was cut out.



**Site Name:**  
 Bend of the Road pull off Rt 37

**Site Location:**  
 76

**Date Photograph Taken:**  
 June 18, 2024

**Comments:**  
 Found both English and Spanish signs on tree adjacent to small pull-off on Rt. 7, New Milford, CT. Signs sit back off Rt. 7 and were cut out to be seen.

**PHOTOGRAPH LOG**

Housatonic River  
 2024 Biota Consumption Advisory Sign Maintenance  
 Housatonic Rest of River - Connecticut

	<p><b>Site Name:</b>                  Second pull off on River Rd New Milford</p> <p><b>Site Location:</b>                  77</p> <p><b>Date Photograph Taken:</b>                  June 14, 2024</p> <p><b>Comments:</b>                  Replaced both English and Spanish signs on adjacent tree, tree with existing signs fell over. New tree is adjacent to seventh pull-off on River Rd. (coming from Boardman Rd.) in New Milford, CT.</p>
---	--

	<p><b>Site Name:</b>                  Third pull off River Rd New Milford</p> <p><b>Site Location:</b>                  78</p> <p><b>Date Photograph Taken:</b>                  June 14, 2024</p> <p><b>Comments:</b>                  Found both English and Spanish signs on tree at sixth pull-off on River Rd. (coming from Boardman Rd.) in New Milford, CT.</p>
--	--

## PHOTOGRAPH LOG

Housatonic River  
 2024 Biota Consumption Advisory Sign Maintenance  
 Housatonic Rest of River - Connecticut

	<p><b>Site Name:</b>          Fourth pull off River Rd New Milford</p> <p><b>Site Location:</b>          79</p> <p><b>Date Photograph Taken:</b>          June 14, 2024</p> <p><b>Comments:</b>          Found both English and Spanish signs on tree at fifth pull-off on River Rd. (coming from Boardman Rd.) in New Milford, CT.</p>
---	---

	<p><b>Site Name:</b>          Pulloff on RT 37 after Straight-away</p> <p><b>Site Location:</b>          80</p> <p><b>Date Photograph Taken:</b>          June 14, 2024</p> <p><b>Comments:</b>          Found both English and Spanish signs on large tree, near entrance to gravel pit, on Rt. 7, New Milford, CT. Look for survey ribbon on telephone pole, guardrail, and trees, signs sit back off Rt. 7.</p>
--	--

**PHOTOGRAPH LOG**

Housatonic River  
 2024 Biota Consumption Advisory Sign Maintenance  
 Housatonic Rest of River - Connecticut



**Site Name:**  
 Sixth pull off River Rd New Milford

**Site Location:**  
 81

**Date Photograph Taken:**  
 June 14, 2024

**Comments:**  
 Found both English and Spanish signs at fourth pull-off on River Rd. (coming from Boardman Rd.), on tree adjacent to parking area, New Milford, CT.



**Site Name:**  
 Pull off on Rt 37 US Private Rd

**Site Location:**  
 82

**Date Photograph Taken:**  
 June 14, 2024

**Comments:**  
 Found both English and Spanish signs on tree adjacent to pull-off on Rt. 7, near Kennedy Ct, New Milford, CT.



**PHOTOGRAPH LOG**

Housatonic River  
2024 Biota Consumption Advisory Sign Maintenance  
Housatonic Rest of River - Connecticut



**Site Name:**  
Beach pull off

**Site Location:**  
83

**Date Photograph Taken:**  
June 14, 2024

**Comments:**  
Found English and Spanish signs on tree at third pull-off on River Rd. (coming from Boardman Rd.), New Milford, CT.



**Site Name:**  
Eighth pull off River Rd New Milford

**Site Location:**  
84

**Date Photograph Taken:**  
June 14, 2024

**Comments:**  
Found English sign, replaced Spanish sign on tree at second pull-off on River Rd. (coming from Boardman Rd.), New Milford, CT. Cut a few branches around the signs.

**PHOTOGRAPH LOG**

Housatonic River  
 2024 Biota Consumption Advisory Sign Maintenance  
 Housatonic Rest of River - Connecticut



**Site Name:**  
 Ninth pull off River Rd New Milford

**Site Location:**  
 85

**Date Photograph Taken:**  
 June 14, 2024

**Comments:**  
 Found both English and Spanish signs on large tree at first pull-off on River Rd., New Milford, CT.



**Site Name:**  
 Bleachry Dam

**Site Location:**  
 86

**Date Photograph Taken:**  
 June 14, 2024

**Comments:**  
 Replaced screws holding English sign to tree and replaced Spanish sign, on large tree to the right of gate on path leading down to Bleachry Dam. Trail starts at back of parking lot for Orthodontics office, New Milford, CT. Cut out start of trail and around tree with the signs.

**PHOTOGRAPH LOG**

Housatonic River  
 2024 Biota Consumption Advisory Sign Maintenance  
 Housatonic Rest of River - Connecticut



**Site Name:**  
 West Cove Marina

**Site Location:**  
 87

**Date Photograph Taken:**  
 June 14, 2024

**Comments:**  
 Found English and Spanish signs on telephone pole next to boat launch at West Cove Marina. Drive to end of West St. and around back of building to launch, New Milford, CT.



**Site Name:**  
 Town Park

**Site Location:**  
 88

**Date Photograph Taken:**  
 June 14, 2024

**Comments:**  
 Found English and Spanish signs on wood post at Addis Park boat launch off Lower Grove St. in New Milford, CT.

## PHOTOGRAPH LOG

Housatonic River  
 2024 Biota Consumption Advisory Sign Maintenance  
 Housatonic Rest of River - Connecticut



**Site Name:**  
 Lillinonah State Boat Launch

**Site Location:**  
 89

**Date Photograph Taken:**  
 June 13, 2024

**Comments:**  
 Found English, Spanish, and Vietnamese, Cambodian, Lao, Hmong signs at kiosk next to Bridgewater/ Lake Lillinonah Public Boat Launch in Bridgewater, CT.



**Site Name:**  
 Lillinonah State Boat Launch

**Site Location:**  
 90

**Date Photograph Taken:**  
 June 13, 2024

**Comments:**  
 Found English, Spanish, and Vietnamese, Cambodian, Lao, Hmong signs at kiosk next to Bridgewater/ Lake Lillinonah Public Boat Launch in Bridgewater, CT.

**PHOTOGRAPH LOG**

Housatonic River  
 2024 Biota Consumption Advisory Sign Maintenance  
 Housatonic Rest of River - Connecticut



**Site Name:**  
 Lillinonah Woods

**Site Location:**  
 91

**Date Photograph Taken:**  
 June 13, 2024

**Comments:**  
 Found both English and Spanish signs on kiosk at Lillinonah Woods Park off Obtuse Hill Rd., in Brookfield, CT. Cut back bushes around the kiosk.



**Site Name:**  
 Lillinonah Lake Boat Launch-  
 Hanover Street

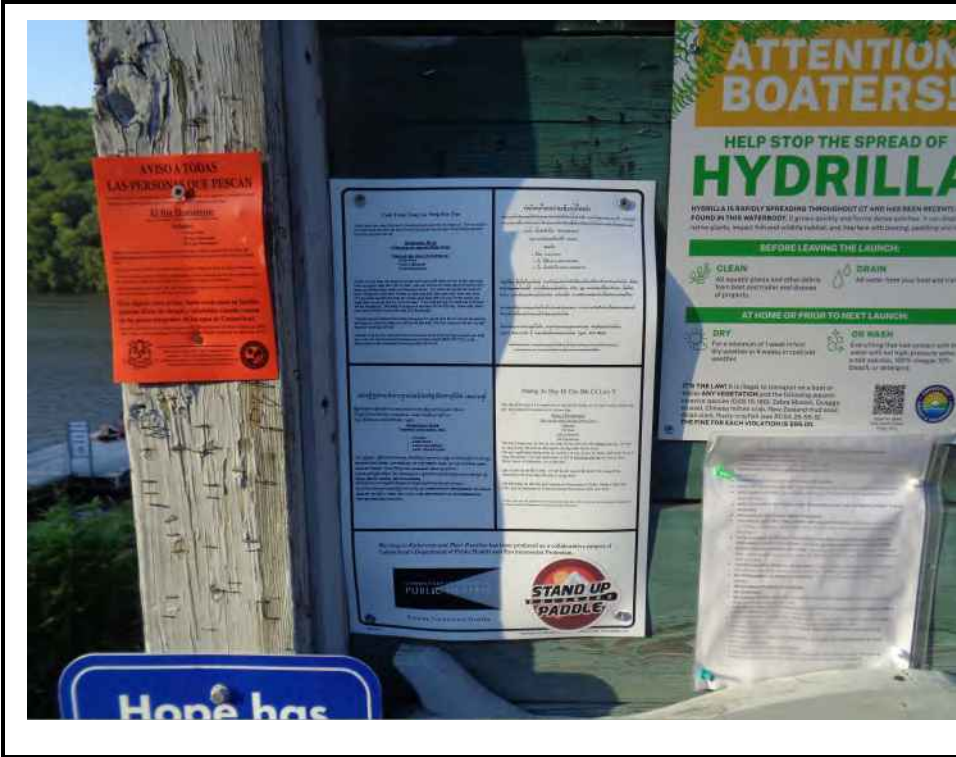
**Site Location:**  
 92

**Date Photograph Taken:**  
 June 13, 2024

**Comments:**  
 Found English, Spanish, and Vietnamese, Cambodian, Lao, Hmong signs at kiosk next to Lake Lillinonah Town Park boat launch in Newtown, CT.

**PHOTOGRAPH LOG**

Housatonic River  
 2024 Biota Consumption Advisory Sign Maintenance  
 Housatonic Rest of River - Connecticut



**Site Name:**  
 Lillinonah Lake Boat Launch-  
 Hanover Street

**Site Location:**  
 93

**Date Photograph Taken:**  
 June 13, 2024

**Comments:**  
 Found English, Spanish, and Vietnamese, Cambodian, Lao, Hmong signs at kiosk next to Lake Lillinonah Town Park boat launch in Newtown, CT.



**Site Name:**  
 George C Waldo State Park  
 Area

**Site Location:**  
 94

**Date Photograph Taken:**  
 June 13, 2024

**Comments:**  
 Found both English and Spanish signs on tree to left of access gate in George C Waldo State Park in Southbury, CT.

## PHOTOGRAPH LOG

Housatonic River  
 2024 Biota Consumption Advisory Sign Maintenance  
 Housatonic Rest of River - Connecticut

	<p><b>Site Name:</b>                  Pond Brook Confluence with Housatonic</p> <p><b>Site Location:</b>                  95</p> <p><b>Date Photograph Taken:</b>                  June 13, 2024</p> <p><b>Comments:</b>                  Found English and Spanish signs on kiosk next to Town of Newtown Park &amp; Boat Ramp in Newtown, CT.</p>
--	---

	<p><b>Site Name:</b>                  Below Shepaug River Dam</p> <p><b>Site Location:</b>                  96</p> <p><b>Date Photograph Taken:</b>                  June 13, 2024</p> <p><b>Comments:</b>                  Found English, Spanish, and Vietnamese, Cambodian, Lao, Hmong signs on large pine tree in the Housatonic River Project Recreation area, just downstream of Shepaug Dam in Southbury, CT.</p>
--	--

## PHOTOGRAPH LOG

Housatonic River  
 2024 Biota Consumption Advisory Sign Maintenance  
 Housatonic Rest of River - Connecticut

	<p><b>Site Name:</b> Below Shepaug River Dam</p> <p><b>Site Location:</b> 97</p> <p><b>Date Photograph Taken:</b> June 13, 2024</p> <p><b>Comments:</b> Found English, Spanish, and Vietnamese, Cambodian, Lao, Hmong signs on large pine tree in the Housatonic River Project Recreation area, just downstream of Shepaug Dam in Southbury, CT.</p>
--	--

	<p><b>Site Name:</b> Upper Paugusett Trails</p> <p><b>Site Location:</b> 98</p> <p><b>Date Photograph Taken:</b> June 13, 2024</p> <p><b>Comments:</b> Found both English and Spanish signs on kiosk at end of Echo Valley Rd. - The Sugarbush at Upper Paugusett in Newtown, CT.</p>
--	---



## PHOTOGRAPH LOG

Housatonic River  
2024 Biota Consumption Advisory Sign Maintenance  
Housatonic Rest of River - Connecticut



**Site Name:**  
River Road- Sandy Hook

**Site Location:**  
99

**Date Photograph Taken:**  
June 13, 2024

**Comments:**  
Found both English and Spanish signs on tree on River Rd. pull-off in Southbury, CT.



**Site Name:**  
Newtown Forest Trails

**Site Location:**  
100


**Date Photograph Taken:**  
June 13, 2024

**Comments:**  
Found both English and Spanish signs on tree across Alberts Hill Rd. from parking area for Newtown Forest Association in Newtown, CT.

## PHOTOGRAPH LOG

Housatonic River  
 2024 Biota Consumption Advisory Sign Maintenance  
 Housatonic Rest of River - Connecticut

	<p><b>Site Name:</b>          Confluence of the Pootatuck and Housatonic</p> <p><b>Site Location:</b>          101</p> <p><b>Date Photograph Taken:</b>          June 12, 2024</p> <p><b>Comments:</b>          Found both English and Spanish signs on large tree at back of parking lot off Bridge End Farm Ln. in park, Sandy Hook, CT. Cut and removed small trees that were covering the signs.</p>
---	--

	<p><b>Site Name:</b>          Pomperaug River Confluence Area</p> <p><b>Site Location:</b>          102</p> <p><b>Date Photograph Taken:</b>          June 12, 2024</p> <p><b>Comments:</b>          Found both English and Spanish signs on large tree at bottom of path off River Rd. in Southbury, CT. Park across River Rd. and walk down past gate. Removed vine that was covering signs.</p>
--	--



**PHOTOGRAPH LOG**

Housatonic River  
 2024 Biota Consumption Advisory Sign Maintenance  
 Housatonic Rest of River - Connecticut



**Site Name:**  
 Kettletown State Park

**Site Location:**  
 105

**Date Photograph Taken:**  
 June 12, 2024

**Comments:**  
 Found English, Spanish, and Vietnamese, Cambodian, Lao, Hmong signs on kiosk, in Kettletown State Park, adjacent to cove off Lake Zoar, off Georges Hill Rd., Southbury, CT.



**Site Name:**  
 Kettletown State Park

**Site Location:**  
 106

**Date Photograph Taken:**  
 June 12, 2024

**Comments:**  
 Found English, Spanish, and Vietnamese, Cambodian, Lao, Hmong signs on kiosk, in Kettletown State Park, adjacent to cove off Lake Zoar, off Georges Hill Rd., Southbury, CT.

**PHOTOGRAPH LOG**

Housatonic River  
 2024 Biota Consumption Advisory Sign Maintenance  
 Housatonic Rest of River - Connecticut



**Site Name:**  
 Jackson Cove Park

**Site Location:**  
 107

**Date Photograph Taken:**  
 June 12, 2024

**Comments:**  
 Found English, Spanish, and Vietnamese, Cambodian, Lao, Hmong signs on telephone pole adjacent to Jackson Cove boat launch, at Jackson Cove Park, Jackson Cove Rd., Oxford, CT.



**Site Name:**  
 Jackson Cove Park

**Site Location:**  
 108

**Date Photograph Taken:**  
 June 12, 2024

**Comments:**  
 Found English, Spanish, and Vietnamese, Cambodian, Lao, Hmong signs on telephone pole adjacent to Jackson Cove boat launch, at Jackson Cove Park, Jackson Cove Rd., Oxford, CT.

**PHOTOGRAPH LOG**

Housatonic River  
 2024 Biota Consumption Advisory Sign Maintenance  
 Housatonic Rest of River - Connecticut



**Site Name:**  
 Paugusett State Forest Zoar Trail

**Site Location:**  
 109

**Date Photograph Taken:**  
 June 12, 2024

**Comments:**  
 Found both English and Spanish signs on kiosk, at Paugusett State Forest Zoar Trailhead at far end of Great Quarter Rd., Sandy Hook, CT.



**Site Name:**  
 Marina Halfway River

**Site Location:**  
 110

**Date Photograph Taken:**  
 June 12, 2024

**Comments:**  
 Found both English and Spanish signs on attendant's shed at Eichlers Cove Marina, Old Bridge Rd., Sandy Hook, CT.

**PHOTOGRAPH LOG**

Housatonic River  
 2024 Biota Consumption Advisory Sign Maintenance  
 Housatonic Rest of River - Connecticut



**Site Name:**  
 Coppermine Rd Pulloff

**Site Location:**  
 111

**Date Photograph Taken:**  
 June 12, 2024

**Comments:**  
 Found English, Spanish, and Vietnamese, Cambodian, Lao, Hmong signs on tree adjacent to Coppermine Rd. pull-off, near Stevenson Dam, Oxford, CT.



**Site Name:**  
 Coppermine Rd Pulloff

**Site Location:**  
 112

**Date Photograph Taken:**  
 June 12, 2024

**Comments:**  
 Found English, Spanish, and Vietnamese, Cambodian, Lao, Hmong signs on tree adjacent to Coppermine Rd. pull-off, near Stevenson Dam, Oxford, CT.

**PHOTOGRAPH LOG**

Housatonic River  
2024 Biota Consumption Advisory Sign Maintenance  
Housatonic Rest of River - Connecticut



**Site Name:**  
Roosevelt Dr First Light Pull-off

**Site Location:**  
113

**Date Photograph Taken:**  
June 12, 2024

**Comments:**  
Replaced English and Vietnamese, Cambodian, Lao, Hmong signs on same tree where the Spanish sign was found, along trail from First Light Power pull-off area to Housatonic River, Roosevelt Dr. (Rt. 34), Oxford, CT.



**Site Name:**  
Roosevelt Dr First Light Pull-off

**Site Location:**  
114

**Date Photograph Taken:**  
June 12, 2024

**Comments:**  
Replaced English and Vietnamese, Cambodian, Lao, Hmong signs on same tree where the Spanish sign was found, along trail from First Light Power pull-off area to Housatonic River, Roosevelt Dr. (Rt. 34), Oxford, CT.



**PHOTOGRAPH LOG**

Housatonic River  
 2024 Biota Consumption Advisory Sign Maintenance  
 Housatonic Rest of River - Connecticut



**Site Name:**  
 Stevenson Dam Recreational area

**Site Location:**  
 115

**Date Photograph Taken:**  
 June 12, 2024

**Comments:**  
 Found English, Spanish, and Vietnamese, Cambodian, Lao, Hmong signs on kiosk at Housatonic River Project Recreational Area, adjacent to Stevenson Dam off of Rt. 34, downstream side of dam, Monroe, CT.



**Site Name:**  
 Stevenson Dam Recreational area

**Site Location:**  
 116

**Date Photograph Taken:**  
 June 12, 2024

**Comments:**  
 Found English, Spanish, and Vietnamese, Cambodian, Lao, Hmong signs on kiosk at Housatonic River Project Recreational Area, adjacent to Stevenson Dam off of Rt. 34, downstream side of dam, Monroe, CT.

**PHOTOGRAPH LOG**

Housatonic River  
 2024 Biota Consumption Advisory Sign Maintenance  
 Housatonic Rest of River - Connecticut



**Site Name:**  
 Indian Wells Boat Launch

**Site Location:**  
 117

**Date Photograph Taken:**  
 June 11, 2024

**Comments:**  
 Found English, Spanish, and Vietnamese, Cambodian, Lao, Hmong signs on kiosk at Indian Well State Park boat launch, Rt. 454, Shelton CT.



**Site Name:**  
 Indian Wells Boat Launch

**Site Location:**  
 118

**Date Photograph Taken:**  
 June 11, 2024

**Comments:**  
 Found English, Spanish, and Vietnamese, Cambodian, Lao, Hmong signs on kiosk at Indian Well State Park boat launch, Rt. 454, Shelton CT.

**PHOTOGRAPH LOG**

Housatonic River  
2024 Biota Consumption Advisory Sign Maintenance  
Housatonic Rest of River - Connecticut



**Site Name:**  
Pink House Cove

**Site Location:**  
119

**Date Photograph Taken:**  
June 12, 2024

**Comments:**  
Found English, Spanish, and Vietnamese, Cambodian, Lao, Hmong signs on telephone pole off of Rt. 34, adjacent to Pink House Cove Ice Fishing Area, on Housatonic River, Derby, CT. Location was cut out.



**Site Name:**  
Pink House Cove

**Site Location:**  
120

**Date Photograph Taken:**  
June 12, 2024

**Comments:**  
Found English, Spanish, and Vietnamese, Cambodian, Lao, Hmong signs on telephone pole off of Rt. 34, adjacent to Pink House Cove Ice Fishing Area, on Housatonic River, Derby, CT. Location was cut out.

**PHOTOGRAPH LOG**

Housatonic River  
 2024 Biota Consumption Advisory Sign Maintenance  
 Housatonic Rest of River - Connecticut



**Site Name:**  
 Maples Boat Launch

**Site Location:**  
 121

**Date Photograph Taken:**  
 June 11, 2024

**Comments:**  
 Found both English and Spanish signs on wood post at Maples Boat Launch in Shelton, CT. On The Maples Rd., off Indian Well Road, off Rt. 110.



**Site Name:**  
 Riverside Park

**Site Location:**  
 122

**Date Photograph Taken:**  
 June 11, 2024

**Comments:**  
 Found both English and Spanish signs on railing post at top of steps to river edge, just downstream of Derby Dam, Shelton, CT.

**PHOTOGRAPH LOG**

Housatonic River  
 2024 Biota Consumption Advisory Sign Maintenance  
 Housatonic Rest of River - Connecticut

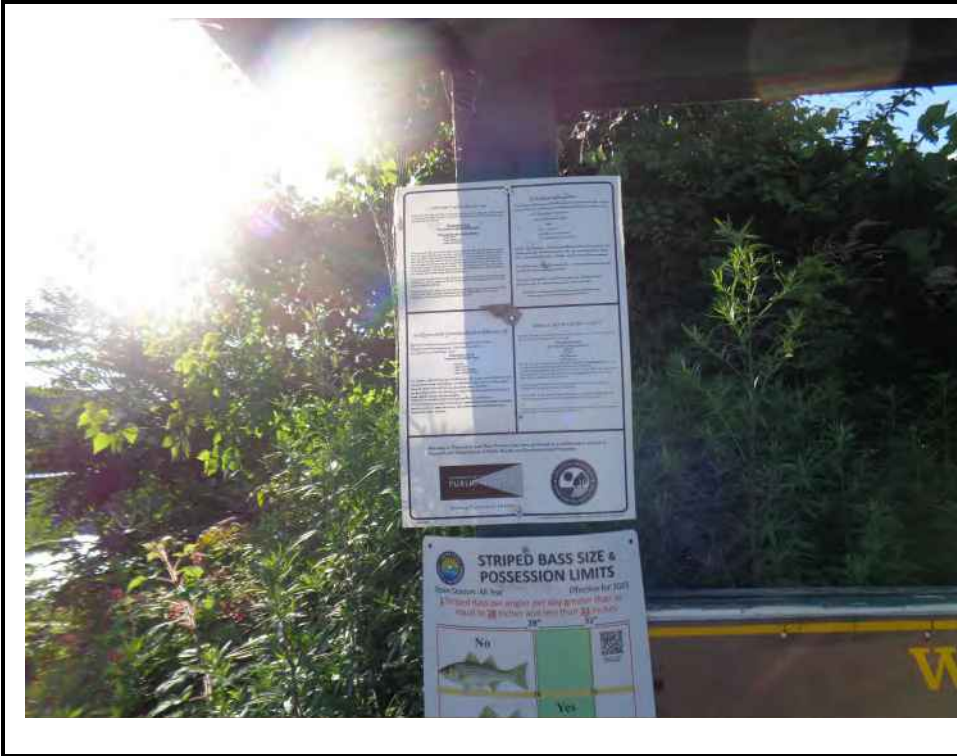


**Site Name:**  
 Derby Dam Area

**Site Location:**  
 123

**Date Photograph Taken:**  
 June 11, 2024

**Comments:**  
 Found English, Spanish, and Vietnamese, Cambodian, Lao, Hmong signs on kiosk for Derby Dam in Derby, CT. Location was cut out.



**Site Name:**  
 Derby Dam Area

**Site Location:**  
 124

**Date Photograph Taken:**  
 June 11, 2024

**Comments:**  
 Found English, Spanish, and Vietnamese, Cambodian, Lao, Hmong signs on kiosk for Derby Dam in Derby, CT. Location was cut out.

**PHOTOGRAPH LOG**

Housatonic River  
2024 Biota Consumption Advisory Sign Maintenance  
Housatonic Rest of River - Connecticut



**Site Name:**  
Hawkins Point

**Site Location:**  
125

**Date Photograph Taken:**  
June 11, 2024

**Comments:**  
Found both English and Spanish signs on telephone pole at O' Sullivan's Island Recreation Park and the Derby Greenway, Derby CT.

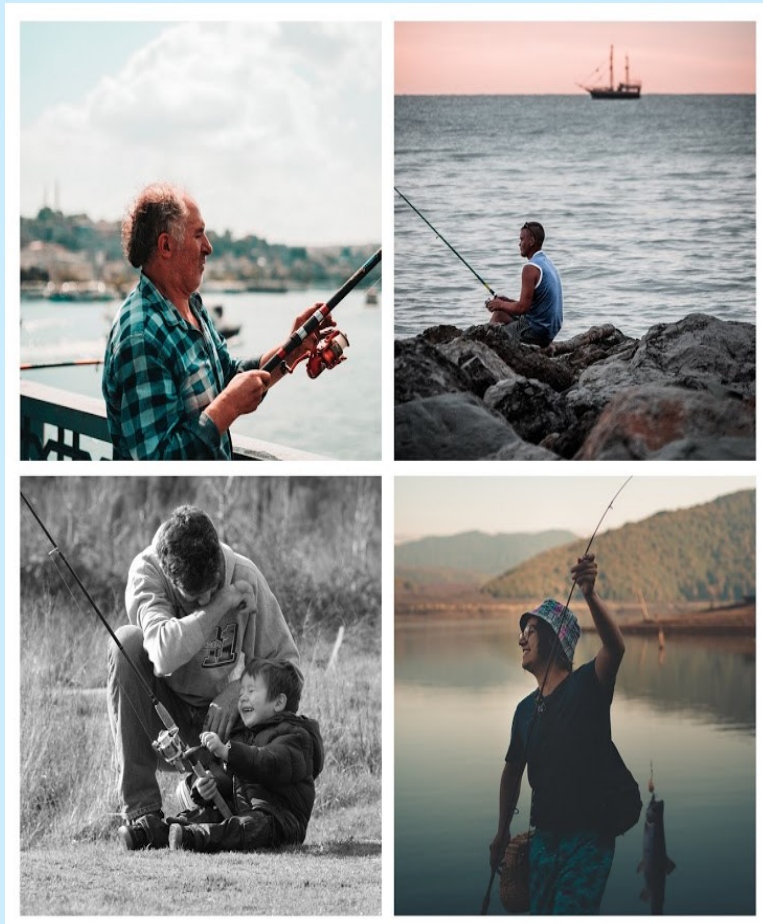
# Attachment C

**2024 Connecticut Fish Consumption Advisory Pamphlet**



# If I Catch It, Can I Eat It?

## A Guide to Eating Fish Safely 2024 Connecticut Fish Consumption Advisory



<https://portal.ct.gov/fish>  
1-877-458-FISH (3474)

### This pamphlet will give you information that will help your family avoid chemicals in fish and eat fish safely.

Fish from Connecticut's waters are a healthy, low-cost source of protein. Unfortunately, some fish take up chemicals such as mercury, perfluorooctane sulfonic acid (PFOS) and polychlorinated biphenyls (PCBs). These chemicals can build up in your body and increase health risks. The developing fetus and young children are most sensitive. Women who eat fish containing these chemicals before or during pregnancy or nursing may have children who are slow to develop and learn. Long term exposure to PCBs may increase cancer risk.

### What Does The Fish Consumption Advisory Say?

The advisory tells you how often you can safely eat fish from Connecticut's waters and from a store or restaurant. In many cases, separate advice is given for the **High Risk** and **Low Risk** Groups.

- You are in the **High Risk Group** if you are a *pregnant woman, a woman who could become pregnant, a nursing mother, or a child under six.*
- If you do not fit into the High Risk Group, you are in the **Low Risk Group.**

Advice is given for three different types of fish consumption:

1. Statewide FRESHWATER Fish Advisory: Most freshwater fish in Connecticut contain enough mercury to cause some limit to consumption. The statewide freshwater advice is that:

- High Risk Group: eat no more than 1 meal per month
- Low Risk Group: eat no more than 1 meal per week

2. Advisories for SPECIFIC WATERBODIES: Certain waterbodies contain fish with higher levels of contaminants. These waterbodies include the Housatonic River, as well as other rivers, lakes, and ponds, and certain species from Long Island Sound. The large chart in the center of this pamphlet provides details on eating fish safely from these waterbodies.

3. Advice for Fish Purchased from the MARKET: Most fish from the market are healthy to eat and contain important nutrients such as omega-3 fatty acids. However, there are some fish that contain high levels of mercury or PCBs and so should be eaten less or not at all. This pamphlet points out which fish are healthy to eat and which ones are not safe to eat (small chart on page 3).

### Are Trout Safe To Eat?

Most trout from Connecticut's rivers are safe to eat because they usually have little contamination and are routinely re-stocked. However, there are limits on trout from certain waterbodies due to PCBs and PFOS and on large trout from lakes due to mercury (see large chart in center).

### How Do These Contaminants Get Into Fish?

Mercury, PCBs and PFOS can build up in fish to levels that are thousands of times higher than in the water. These contaminants enter the water from:

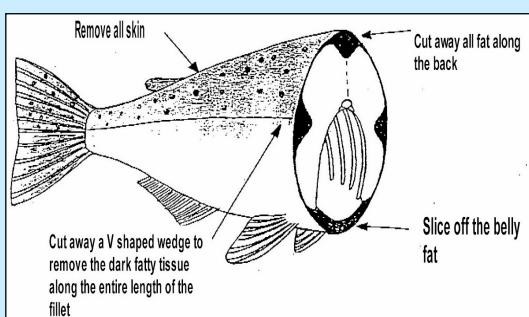
- Chemical spills that happened in the past. Even though these spills have been stopped, it may take years for the contaminant levels in the fish to drop to safe levels.
- Mercury in the air. Mercury travels long distances from where it is released. Much of it comes from air pollution outside of Connecticut.

The Connecticut Department of Energy and Environmental Protection (CT DEEP) is working to improve water quality in Connecticut and is limiting the amount of mercury which can be released into the air.

### What Else Can I Do To Eat Fish Safely?

PCBs are mostly in the fatty portions of fish. It is very important to remove skin and other fatty parts. Cook fish on a rack (broil) so that fat can drip away from the flesh.

#### Remove fatty portions before cooking



**Remove and do not eat the organs, head, skin and the dark fatty tissue along the back bone, lateral lines and belly.**

Mercury is in the edible (fillet) portion of fish. Therefore, you cannot lower your exposure to mercury by cooking or cleaning the fish. Large fish usually have the highest levels of PCBs and mercury. If you have a choice, eat smaller fish of any species. In addition, certain smaller species generally have lower levels of contamination (perch, small trout, sunfish).

### What About Fish from Markets and Restaurants?

Many fish from the market or restaurant are low in contaminants. Some of these fish are also high in omega-3 fatty acids, a nutrient oil from fish that improves brain development and helps prevent heart disease. However, some fish from the market can contain high levels of certain contaminants, especially mercury.

In general, people in the High Risk Group can eat up to 2 fish meals a week from the market or at restaurants. Certain fish are especially low in contaminants and can be eaten more often. The following are specific tips for those in the **High Risk** Group to choose healthy fish from the store:

- Swordfish and Shark: these contain high levels of mercury and **should not be eaten.**
- Canned tuna: Choose "light" tuna because it has less mercury than "white" tuna.
- Lobster and other shellfish are generally low in chemical contaminants. The tomalley portion of lobster (the green gland) can be high in contaminants and should not be eaten. This applies to lobster from Long Island Sound and elsewhere. Crab tomalley from the Mill River in Fairfield should be avoided as well and has elevated lead levels.

#### Fish from the Market and Restaurant

The chart below provides general guidance for Women & Children on which fish to choose. Fish with hearts are ♥ either especially high in omega-3 fatty acids and/or very low in contaminants and can be eaten more than twice a week.

Eat 2 Meals a Week		Eat 1 Meal a Week		Avoid
Herring ♥	Trout ♥	Tuna Steak		Swordfish
Pollock ♥	Haddock	Halibut		Shark
Salmon (wild) ♥	Perch	Red Snapper		King Mackerel
Atlantic Mackerel ♥	Tilapia	White Tuna (canned)		Striped Bass
Flounder & Fluke ♥	Light tuna (canned)	Catfish (farm-raised)		Tilefish (Gulf of Mexico)
Sole ♥	Cod	Tilefish (Atlantic)		Bluefish
Sardines & Smelt ♥	Salmon (farm-raised)			Tuna Sushi
Shellfish: oysters, shrimp, clams, scallops, lobster *		* see warning above about lobster tomalley		

People in the **Low Risk** Group can safely eat higher amounts of market seafood. For example, swordfish or shark - once per month; tuna steak or halibut - twice per week.







# 2024 Connecticut Safe Fish

## REMEMBER

Follow this advisory to make sure the fish you choose to eat are safe for your family.

- Every fresh waterbody has some consumption limits as indicated at the top of the chart.
- *Long Island Sound*: Most fish are safe to eat except for listed restrictions on striped bass, bluefish, and weakfish.
- Be aware of advice for fish from the market or restaurant. See market advice on page 3.
- Your exposure to PCBs in fish can be reduced by trimming away fat and cooking fish on a rack so that fat drips away.

## WHERE CAN I GET MORE INFORMATION?

More specific fact sheets can be obtained by calling 1-877-458-FISH (3474), or by going to the DPH WEB SITE: <https://portal.ct.gov/fish>

### Health Questions?

Call CT DPH toll-free at: **1-877-458-FISH (3474)**

### Questions about fishing in Connecticut?

Call CT DEEP at 860-424-3474.  
[www.ct.gov/deep/fishing](http://www.ct.gov/deep/fishing)

### Footnotes from Table:

**a.** The **High Risk Group** includes pregnant women, women who could become pregnant, nursing women, and children under age 6.

The **High Risk Group** should eat no more than one fish meal per month of most freshwater fish from local waters

**b.** The **Low Risk Group** should limit eating most freshwater fish to once a week.

**c.** Most trout are not part of any advisory and are safe to eat unless otherwise noted.

**d.** Includes the entire River as well as the West Branch Naugatuck River downstream of Stillwater Pond, Torrington.

**e.** The Housatonic River upstream to the Derby Dam and downstream to the Rt. 15 Bridge. Upstream on the Naugatuck River to the Kinneytown Dam.

**f.** Shad only travel to the Connecticut River to spawn, have low contamination and are not included in the advisory.

**g.** Upstream boundary is the Somersville Pond Dam.

**h.** The Natchaug River from the dam at the Willimantic Reservoir (northern boundary) downstream to where it forms the Shetucket River. The advisory extends a 1/2 mile down the Shetucket River to Plains Road. Willimantic River from where it meets the Shetucket and Natchaug Rivers upstream to the dam at Pine Street.

**i.** Hockanum River from the outlet of Shenipsit Lake (Tolland Ave., Vernon) to the Connecticut River, including several riverine impoundments of Papermill Pond, including Pitney Park (Vernon), Union Pond (Manchester), small impoundments and ponds (East Hartford) and the Tankerhoosen River (upstream to dam at Main Street, Vernon).

**j.** Downstream from the Rainbow Dam in the town of Windsor to the confluence with the Connecticut River.

**k.** Snappers (bluefish under 13") are not included in the advisory because they have very low contamination.

## STATEWIDE FRESHWATER FISH ADVICE

Waterbody	Fish Species	High Risk Group <sup>a</sup>	Low Risk Group <sup>b</sup>	Contaminant
<i>All fresh lakes, ponds, rivers &amp; streams</i>	Trout <sup>c</sup> Sunfish	No Limits on Consumption	No Limits on Consumption	--
	All other freshwater fish	One meal per month	One meal per week	Mercury

## SPECIAL ADVICE FOR THE HOUSATONIC RIVER AREA

Waterbody	Fish Species	High Risk Group <sup>a</sup>	Low Risk Group <sup>b</sup>	Contaminant
<i>Housatonic River above Lake Lillinonah</i>	Trout, Catfish, Eel, Carp, Northern Pike	Do not eat	Do not eat	PCBs
	Bass, White Perch	Do not eat	One meal per 2 months	PCBs
	Bluegill, Bullhead, Fallfish	One meal per month	One meal per month	PCBs
	Yellow Perch, Calico Bass (Crappie), Rock Bass & Sunfish	One meal per month	One meal per week	PCBs
<i>Lakes on Housatonic River: (Lillinonah, Zoar, Housatonic)</i>	Catfish, Eel, Carp, Northern Pike, Trout	Do not eat	Do not eat	PCBs
	White Perch, Fallfish, Bullhead	One meal per month	One meal per month	PCBs
	Bass	Do not eat	One meal per 2 months	PCBs
	Yellow Perch, Calico Bass (Crappie), Rock Bass, Bluegill & Sunfish	One meal per month	One meal per week	PCBs
<i>Furnace Brook (Cornwall)</i>	Trout	One meal per month	One meal per month	PCBs
<i>Blackberry River below "Blast Furnace" (North Canaan)</i>	Smallmouth Bass	One meal per month	One meal per month	PCBs
<i>Naugatuck River<sup>d</sup></i>	Bass	One meal per month	One meal per month	PFOS
<i>Housatonic River at O'Sullivan's Island<sup>e</sup></i>	All	One meal per month	One meal per month	PFOS

## SPECIAL ADVICE FOR OTHER CT FRESH WATERBODIES & LONG ISLAND

Waterbody	Fish Species	High Risk Group <sup>a</sup>	Low Risk Group <sup>b</sup>	Contaminant
<i>Dodge Pond Lake McDonough Silver Lake Wyassup Lake</i>	Largemouth Bass, Smallmouth Bass, Pickerel	Do not eat	One meal per month	Mercury
<i>Quinnipiac River (Gorge south of Meriden through Wallingford to Long Island Sound)</i>	All Species	One meal per month	One meal per month	PCBs, PFOS
<i>Versailles, Papermill Ponds &amp; attached Little River (Sprague)</i>	All Species	Do not eat	Do not eat	Mercury, PCBs
<i>Connecticut River<sup>f</sup></i>	All Species Except for Shad	One meal per month	One meal per month	PCBs, PFOS
<i>Konkapot River (North Canaan)</i>	White Sucker	Do not eat	One meal per month	Mercury
<i>Brewster Pond (Stratford)</i>	Catfish & Bullhead	Do not eat	Do not eat	Chlordane
<i>Union Pond (Manchester)</i>	All Species	Do not eat	Do not eat	PFOS
<i>Still River (Winchester)</i>	Bass	One meal per month	One meal per month	PFOS
<i>Scantic River<sup>g</sup></i>	American Eel	One meal per month	One meal per month	PFOS
<i>Pequabuck River</i>	American Eel	One meal per month	One meal per month	PFOS
<i>Natchaug, Willimantic and Shetucket Rivers<sup>h</sup> (Willimantic &amp; Mansfield)</i>	Bass All Other Species	Do not eat One meal per month	Do not eat One meal per month	PFOS
<i>Hockanum &amp; Tankerhoosen Rivers<sup>i</sup> (Vernon, Ellington, Manchester, &amp; East Hartford)</i>	All Species	Do not eat	Do not eat	PFOS
<i>Lower Farmington River<sup>j</sup></i>	Yellow Perch & Bass	One meal per month	One meal per month	PFOS
<i>Long Island Sound &amp; connected rivers</i>	Striped Bass Bluefish over 25" <sup>k</sup>	Do not eat Do not eat	One meal per month One meal per month	PCBs PCBs
	Bluefish 13-25" Weakfish	One meal per month One meal per month	One meal per month One meal per month	PCBs PCBs

# ¿Si lo atrapo, puedo comerlo?

## Guía para el Consumo Seguro de Pescado

Asesoría de Consumo de Pescado Connecticut 2024



<https://portal.ct.gov/fish>  
1-877-458-FISH (3474)

### Este folleto le proporcionará información que ayudará a su familia a evitar los productos químicos en el pescado y a comerlo de forma segura.

Los peces de las aguas de Connecticut son una fuente de proteína saludable y de bajo costo. Desafortunadamente, algunos peces ingieren sustancias químicas como el mercurio, ácido perfluorooctano sulfónico (PFOS) y los bifenilos policlorados (PCB). Estos productos químicos pueden acumularse en el cuerpo y aumentar los riesgos para la salud. Los fetos en desarrollo y los niños pequeños son más sensibles. Las mujeres que consumen pescados que contienen estas sustancias químicas, antes o durante el embarazo o la lactancia pueden tener hijos con problemas de desarrollo y de aprendizaje. La exposición a largo plazo a los PCB puede aumentar el riesgo de cáncer.

### ¿Qué dice la Asesoría de Consumo de Pescado?

La asesoría le indica con qué frecuencia puede comer pescado de las aguas de Connecticut, y de una tienda o restaurante, de forma segura. En muchos casos, se dan consejos distintos para los grupos de **Alto Riesgo** y **Bajo Riesgo**.

- Usted está en el **Grupo de Alto Riesgo** si es una mujer embarazada, una mujer que podría quedar embarazada, una madre lactante o un niño menor de seis años.
- Si no eres parte del grupo de Alto Riesgo, entonces eres parte del **Grupo de Bajo Riesgo**.

Se aconseja para tres tipos diferentes de consumo de pescado:

1. **Consejos estatales sobre el pescado de AGUA FRESCA:** La mayoría de los peces de agua fresca de Connecticut contienen suficiente mercurio para limitar el consumo. El consejo para agua fresca del estado es:

- Grupo de Alto Riesgo: no consumir más de 1 comida al mes
- Grupo de Bajo Riesgo: no consumir más de 1 comida por semana

2. **Consejos para CUERPOS DE AGUA ESPECÍFICOS:** Algunas masas de agua contienen peces con niveles más altos de contaminantes. Estos cuerpos de agua incluyen el Río Housatonic, algunos lagos y ciertas especies de Long Island Sound. El gráfico grande en el centro de este folleto proporciona detalles sobre cómo comer pescado de estas masas de agua de forma segura.

3. **Consejos para pescado comprado en el MERCADO:** La mayoría de los pescados del mercado son saludables y contienen nutrientes importantes, como los ácidos grasos omega-3. Sin embargo, hay algunos peces que contienen altos niveles de mercurio o PCB, por lo que deben consumirse menos o evitar. Este folleto señala qué pescados son saludables para comer y cuáles no son seguros (pequeña tabla en la página 3).

### ¿Es seguro comer Truchas?

La mayoría de las truchas de los ríos de Connecticut son seguras para comer porque usualmente tienen poca contaminación y se reabastecen rutinariamente. Sin embargo, existen límites para la trucha de ciertas masas de agua debido a los PCB y PFOS y para las truchas grandes de los lagos debido al mercurio (ver gráfico grande en el centro).

Página  
1

### ¿Cómo entran estos contaminantes en los peces?

El mercurio, los PCB y PFOS pueden acumularse en los peces a niveles que son miles de veces mayores a los del agua. Estos contaminantes entran en el agua por:

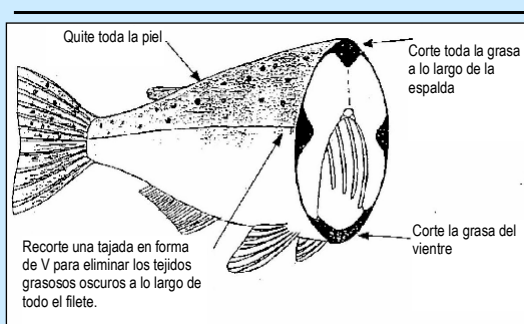
- **Derrames químicos que ocurrieron en el pasado.** Aunque estos derrames se han detenido, pueden pasar años hasta que los niveles de contaminantes en los peces bajen a niveles seguros.
- **Mercurio en el aire.** El mercurio viaja largas distancias desde donde se libera. Gran parte proviene de la contaminación atmosférica fuera de Connecticut.

El Departamento de Energía y Protección Ambiental de Connecticut (CT DEEP) está trabajando para mejorar la calidad del agua en Connecticut y está limitando la cantidad de mercurio que se puede liberar en el aire.

### ¿Qué más puedo hacer para comer pescado de forma segura?

Los PCB se encuentran principalmente en las partes grasosas del pescado. Es muy importante eliminar la piel y otras partes grasosas. Cocine el pescado en una parrilla (asador) para que la grasa pueda gotear de la carne.

#### Retire las porciones grasosas antes de cocinar



**Retire y no coma los órganos, la cabeza, la piel y los tejidos grasosos oscuros a lo largo de la espina dorsal, las líneas laterales y el vientre.**

El mercurio se encuentra en la porción comestible (filete) del pescado. Por lo tanto, no se puede reducir la exposición al mercurio cocinando o limpiando el pescado. Los peces grandes usualmente tienen los niveles más altos de PCB y mercurio. Si tiene la opción, coma peces más pequeños de cualquier especie. Además, algunas especies más pequeñas usualmente tienen niveles de contaminación más bajos (perca, trucha pequeña, pez sol).

Esta hoja informativa está financiada en parte con fondos del Programa de Seguimiento de Salud Pública Ambiental de CT y Ley de Respuesta Ambiental Exhaustiva, Compensación y Responsabilidad y a través de un acuerdo cooperativo con la Agencia para el Registro de Sustancias Tóxicas y Enfermedades, Servicio de Salud Pública y el Departamento de Salud y Servicios Humanos.

Página 2

### ¿Qué pasa con el pescado de mercados y restaurantes?

Muchos pescados del mercado o del restaurante son bajos en contaminantes. Algunos de estos pescados también tienen un alto contenido de ácidos grasos omega-3, un aceite nutritivo de pescado que mejora el desarrollo cerebral y ayuda a prevenir las enfermedades cardíacas. Sin embargo, algunos pescados del mercado pueden contener altos niveles de ciertos contaminantes, especialmente mercurio.

En general, las personas del Grupo de **Alto Riesgo** pueden comer hasta 2 comidas de pescado a la semana en el mercado o en los restaurantes. Algunos peces tienen un contenido especialmente bajo de contaminantes y se pueden comer con más frecuencia. Los siguientes son consejos específicos para que los miembros del Grupo de **Alto Riesgo** elijan pescados saludables en la tienda:

- Pez Espada y Tiburón: contienen altos niveles de mercurio y **no deben comerse**.
- Atún enlatado: Elige atún «claro» porque tiene menos mercurio que el atún «blanco».
- La langosta y otros mariscos son generalmente bajos en contaminantes químicos. El tomalley de la langosta (la glándula verde) puede tener un alto contenido de contaminantes y no debe comerse. Esto se aplica a la langosta de Long Island Sound y de otros lugares. También, se debe evitar comer el órgano verde del cangrejo, tomalley, del Río Mill en Fairfield debido a los niveles de plomo.

#### Pescado del mercado y restaurante

La siguiente tabla es un guía general para **Las Mujeres y Los Niños** sobre qué peces elegir. Los pescados con corazones ♥ son especialmente altos en ácidos grasos omega-3 y/o muy bajos en contaminantes y pueden consumirse más de dos veces por semana.

Comer 2 veces por semana		Comer 1 vez por semana	Evitar
Arenque ♥	Trucha ♥	Filete de atún	Pez espada
Abadejo ♥	Eglefino	Fletán	Tiburón
Salmón (salvaje) ♥	Perca	Pargo rojo	Caballa real
Caballa ♥	Tilapia	Atún blanco (enlatado)	Bajo rayado
Platija de verano ♥	Atún claro (enlatado)	Bagre (criado en granja)	Blanquillos (Golfo de México)
Lenguado ♥	Bacalao	Blanquillos (Atlántico)	Anjova
Sardinias & Eperlanos ♥	Salmón (criado en granja)		Sushi de atún
Mariscos: Ostras, camarones, almejas, vieiras, langosta *		* Ver advertencia arriba sobre el tomalley de langosta	

Las personas del Grupo de **Bajo Riesgo** pueden comer con seguridad mayores cantidades de mariscos del mercado. Por ejemplo, pez espada o tiburón, una vez al mes; bistec de atún o fletán, dos veces por semana.

Página 3





# Consumo Seguro Pescado de Connecticut 2024

## CONSEJOS DEL ESTADO SOBRE PECES DE AGUA FRESCAS

Cuerpo de Agua	Especies de Peces	Grupo de Alto Riesgo <sup>a</sup>	Grupo de Bajo Riesgo <sup>b</sup>	Contaminante
Todos los lagos, estanques, ríos y arroyos frescos	Trucha <sup>c</sup> Pez Sol	Sin límites de consumo	Sin límites de consumo	
	Todos los demás peces de agua fresca	Una comida al mes	Una comida por semana	Mercurio

## CONSEJOS ESPECIALES PARA LA ZONA DEL RÍO HOUSATONIC

Cuerpo de Agua	Especies de Peces	Grupo de Alto Riesgo <sup>a</sup>	Grupo de Bajo Riesgo <sup>b</sup>	Contaminante
Río Housatonic sobre el Lago Lillinonah	Trucha, Siluro, Anguilas, Carpa, Lucio del Norte	No comer	No comer	PCB
	Róbalo, Perca Blanca	No comer	Una comida cada 2 meses	PCB
	Agalla Azul, Bullhead, Fallfish	Una comida al mes	Una comida al mes	PCB
	Perca Amarilla, Cabrilla Sargacera (Crappie), Bajo de Roca & Pez Sol	Una comida al mes	Una comida por semana	PCB
Lagos en el Río Housatonic: (Lillinonah, Zoar, Housatonic)	Siluro, Anguilas, Carpa, Lucio del Norte, Trucha	No comer	No comer	PCB
	Perca Blanca, Fallfish, Bullhead	Una comida al mes	Una comida al mes	PCB
	Róbalo	No comer	Una comida cada 2 meses	PCB
	Perca Amarilla, Cabrilla Sargacera (Crappie), Bajo de Roca, Agalla Azul y Pez Sol	Una comida al mes	Una comida por semana	PCB
Furnace Brook (Cornwall)	Trucha	Una comida al mes	Una comida al mes	PCB
Río Blackberry debajo del «Blast Furnace» (North Canaan)	Róbalo de Boca Chica	Una comida al mes	Una comida al mes	PCB
Río Naugatuck <sup>d</sup>	Róbalo	Una comida al mes	Una comida al mes	PFOS
Río Housatonic en La Island de O'Sullivan <sup>e</sup>	Todas las especies	Una comida al mes	Una comida al mes	PFOS

## CONSEJOS ESPECIALES PARA OTROS CUERPOS DE AGUA FRESCAS DE CONNECTICUT Y LONG ISLAND SOUND

Cuerpo de Agua	Especies de Peces	Grupo de Alto Riesgo <sup>a</sup>	Grupo de Bajo Riesgo <sup>b</sup>	Contaminante
Estanque Dodge Lago McDonough Lago Silver Lago Wyassup	Róbalo de Boca Grande, Róbalo de Boca Chica	No comer	Una comida al mes	Mercurio
Río Quinnipiac (Garganta al Sur de Meriden a través de Wallingford hasta Long Island Sound)	Todas las especies	Una comida al mes	Una comida al mes	PCB, PFOS
Río Connecticut <sup>f</sup>	Todas las especies excepto Sábalo	Una comida al mes	Una comida al mes	PCB, PFOS
Versailles, Estanque Papermill & Lago Little (Sprague)	Todas las especies	No comer	No comer	Mercurio PCB
Río Konkapot (North Canaan)	Ventosa Blanca	No comer	Una comida al mes	Mercurio
Estanque Brewster (Stratford)	Siluro y Bullhead	No comer	No comer	Clordano
Estanque Union (Manchester)	Todas las especies	No comer	No comer	PFOS
Río Still (Winchester)	Róbalo	Una comida al mes	Una comida al mes	PFOS
Río Scantic <sup>g</sup>	Anguila Americana	Una comida al mes	Una comida al mes	PFOS
Río Pequabuck	Anguila Americana	Una comida al mes	Una comida al mes	PFOS
Ríos Natchaug, Willimantic y Shetucket <sup>h</sup> (Willimantic y Mansfield)	Róbalo Todas las demás especies	No comer Una comida al mes	No comer Una comida al mes	PFOS
Ríos Hockanum y Tankerhoosen <sup>i</sup> (Vernon, Ellington, Manchester, East Hartford)	Todas las especies	No comer	No comer	PFOS
Río Farmington Inferior <sup>j</sup>	Perca Amarilla y Róbalo	Una comida al mes	Una comida al mes	PFOS
Long Island Sound y Ríos conectados	Róbalo Rayada Anjova Pez Azul a más de 25" Anjova Azul 13-25" Pescadillas	No comer No comer Una comida al mes Una comida al mes	Una comida al mes Una comida al mes Una comida al mes Una comida al mes	PCB PCB PCB PCB

### RECUERDE

Sigue este aviso para asegurarte que el pescado que elijas comer sea seguro para tu familia.

- Cada cuerpo de agua fresca tiene algunos límites de consumo, como se indica en la parte superior de la tabla.
- *Long Island Sound*: La mayoría de los peces son seguros para comer excepto por las restricciones indicadas sobre el bajo rayado, la anjova y corvinas.
- Tenga en cuenta los consejos para el pescado del mercado o del restaurante. Vea los consejos de mercado en la página 3.
- La exposición a los PCB en el pescado se puede reducir recortando la grasa y cocinando el pescado en una parrilla para que la grasa escurra.

### ¿DÓNDE PUEDO OBTENER MÁS INFORMACIÓN?

Se pueden obtener datos más específicos llamando al 1-877-458-FISH (3474) o yendo al SITIO WEB de DPH: <https://portal.ct.gov/fish>

¿Tiene preguntas de salud?

Llame gratis a CT DPH a: **1-877-458-FISH (3474)**

¿Tiene preguntas sobre la pesca en Connecticut?

Llame a CT DEEP al 860-424-3474. [www.ct.gov/deep/fishing](http://www.ct.gov/deep/fishing)

### Notas al Pie de la Tabla:

- El **Grupo de Alto Riesgo** incluye mujeres embarazadas, mujeres que podrían quedar embarazadas, mujeres lactantes y niños menores de 6 años. El **Grupo de Alto Riesgo** no debe comer más de una comida de pescado al mes de la mayoría de los peces de agua fresca de aguas locales.
- El **Grupo de Bajo Riesgo** debería limitar el consumo de la mayoría de los peces de agua fresca a una vez por semana.
- La mayoría de las truchas no forman parte de ningún advertencia menos que se indique lo contrario.
- Incluyo todo el Río, así como el río West Branch Naugatuck, río debajo de Estanque Stillwater, Torrington.
- El Río Housatonic río arriba hasta la Represa Derby y río abajo hasta el puente de la Ruta 15. Aguas arriba en el Río Naugatuck hasta la Presa Kinneytown.
- Sábalo solo viajan al Río Connecticut para desovar, tienen poca contaminación, y no están incluidos en este advertencia.
- El límite aguas arriba es la Presa del Estanque de Somerville
- El Río Natchaug desde la presa del Embalse Willimantic (límite norte) aguas abajo hasta donde forma el Río Shetucket. El consejo se extiende 1/2 milla por el Río Shetucket hasta Plains Road. El Río Willimantic desde donde se encuentra con Los Ríos Shetucket y Natchaug río arriba hasta la presa de Pine Street.
- El Río Hockanum de la salida de Lago Shenipsit (Avenida Tolland, Vernon) al Río Connecticut, incluyendo varios embalses y estanques (East Hartford) y el Río Tankerhoosen (aguas arriba de la presa en Main Street, Vernon).
- Aguas debajo de la Presa Rainbow en la ciudad de Windsor hasta la confluencia con Río Connecticut.
- Los pargos (peces azules menores de 13") no están en el aviso porque tienen una contaminación muy baja.