



Kevin Mooney
Senior Project Manager
GE Aerospace
1 Plastics Ave.
Pittsfield, MA 01201
T (413) 553-6610
kevin.mooney@ge.com

Via Electronic Mail

February 28, 2025

Mr. Joshua Fontaine
U.S. Environmental Protection Agency, New England Region
Five Post Office Square
Suite 100
Boston, MA 02109

**Re: GE-Pittsfield/Housatonic River Site
Rest of River (GECD850)
2024 Annual Report on Biota Consumption Advisory Outreach Activities for Housatonic Rest of
River in Massachusetts**

Dear Mr. Fontaine:

Attached for the General Electric Company (GE) is a report entitled *2024 Annual Report on Biota Consumption Advisory Outreach Activities: Housatonic Rest of River – Massachusetts*, prepared for GE by Arcadis. This report is submitted in accordance with GE's Biota Consumption Advisory Outreach Plan for the Housatonic Rest of River in Massachusetts, which was submitted on July 12, 2019 and approved by EPA on July 16, 2019. This report describes the outreach activities conducted on GE's behalf in 2024, including the inspection of biota consumption advisory signs along the Massachusetts portion of the Rest of River, as well as the provision of the Massachusetts Department of Public Health pamphlet describing the consumption advisory to fishing and hunting license distributors and other relevant entities in Berkshire County. The report also describes the biota consumption advisory outreach activities planned for 2025 and future years.

Please let me know if you have any questions about this annual report.

Very truly yours,

Kevin G. Mooney
Senior Project Manager

Attachment

Cc: (via electronic mail)

Dean Tagliaferro, EPA
John Kilborn, EPA
Christopher Ferry, ASRC Federal
Thomas Czelusniak, HDR Inc.
Scott Campbell, Taconic Ridge Environmental
Izabella Zapisek, Taconic Ridge Environmental
Michael Gorski, MassDEP
Tamara Cardona-Marek, MassDEP
Ben Guidi, MassDEP
Michelle Craddock, MassDEP
Jeffrey Mickelson, MassDEP
Mark Tisa, MassDFW
Eve Schluter, MassDFW
Betsy Harper, MA AG
Traci Iott, CT DEEP
Susan Peterson, CT DEEP
Graham Stevens, CT DEEP
Carol Papp, CT DEEP
Lori DiBella, CT AG
Katie Zarada, NOAA
James McGrath, City of Pittsfield
Andrew Cambi, City of Pittsfield
Michael Coakley, PEDA
Melissa Provencher, BRPC
Smitty Pignatelli, Town of Lenox
R. Christopher Brittain, Town of Lee
Town Manager, Great Barrington
Town Administrator, Stockbridge
Town Administrator, Sheffield
Jim Wilusz, Tri Town Health Dept.
Lance Hauer, GE
Andrew Thomas, GE
Rachel Leary, GE
Adam Ayers & David Knutsen, Arcadis
James Bieke, Counsel for GE
Public Information Repository at David M. Hunt Library in Falls Village, CT
GE Internal Repository

General Electric Company

2024 Annual Report on Biota Consumption Advisory Outreach Activities: Housatonic Rest of River – Massachusetts

February 2025

2024 Annual Report on Biota Consumption Advisory Outreach Activities: Housatonic Rest of River – Massachusetts

February 2025

Prepared By:

Arcadis U.S., Inc.
One Lincoln Center, 110 West Fayette Street, Suite 300
Syracuse
New York 13202
Phone: 315 446 9120
Fax: 315 449 0017

Prepared For:

General Electric Company

Our Ref:

30236266

Table of Contents

1	Introduction	1
2	Inspection, Maintenance, and Posting of Advisory Signs	3
3	Provision of Biota Consumption Advisory Pamphlets	5
4	Future Activities.....	7
4.1	Inspection and Replacement of Advisory Signs	7
4.2	Provision of Biota Consumption Advisory Pamphlets	7
4.3	Other Activities	9
4.4	Reporting	9
5	References	10

Table

Table 1 Summary of Consumption Advisory Sign Locations and Maintenance Activities

Figures

- Figure 1 Massachusetts Fish, Frog, Turtle, Wood Duck, and Mallard Duck Consumption Advisory Sign for the Housatonic River and its Tributaries from Pittsfield South to Rising Pond in Great Barrington (in text)
- Figure 2 Massachusetts Fish, Frog, and Turtle Consumption Advisory Sign for the Housatonic River from Rising Pond Dam to the Connecticut Border (in text)
- Figure 3 Locations of Consumption Advisory Signs Along the Massachusetts Section of the Housatonic River from Pittsfield South to Lee (attached)
- Figure 4 Locations of Consumption Advisory Signs Along the Massachusetts Section of the Housatonic River from Lee South to Great Barrington (attached)
- Figure 5 Locations of Consumption Advisory Signs Along the Massachusetts Section of the Housatonic River from Great Barrington South to the Connecticut Border (attached)

Appendices

- Appendix A 2024 Consumption Advisory Sign Photographic Log
- Appendix B *Advice for Eating Fish and Waterfowl from the Housatonic River Area in Massachusetts (in both English and Spanish)*

1 Introduction

On July 12, 2019, the General Electric Company (GE) submitted to the U.S. Environmental Protection Agency (EPA) a Biota Consumption Advisory Outreach Plan for the Housatonic Rest of River in Massachusetts (Outreach Plan; Arcadis 2019). That submittal presented GE’s plan for supporting EPA and Massachusetts in improving public awareness of the biota consumption advisories issued by the Massachusetts Department of Public Health (MassDPH) for the Housatonic River in Massachusetts. The Outreach Plan was submitted in accordance with the requirements of Section II.B.6.a of a Modified Resource Conservation and Recovery Act (RCRA) Permit issued to GE by EPA on October 24, 2016, relating to the portion of the Housatonic River downstream of the confluence of the East and West Branches of the River in Pittsfield (referred to as the “Rest of River”). Following an appeal of that permit to the EPA Environmental Appeals Board and remand by that Board, EPA revised the permit and issued a Revised Modified Permit on December 16, 2020. The requirements relating to GE’s cooperation with and support of EPA and Massachusetts regarding biota consumption advisories are now located in Section II.B.7.a of the Revised Modified Permit, but are otherwise unchanged from those in the 2016 Permit.

Specific activities described in the Outreach Plan included: (1) producing, posting, inspecting, and replacing revised biota consumption advisory signs along the Massachusetts portion of the Rest of River; (2) providing fishing and hunting license distributors in Berkshire County and other relevant entities with copies of the then-current MassDPH pamphlet setting forth the biota consumption advisory for the Housatonic River (as well as the state-wide advisory); and (3) submitting an annual report to EPA summarizing the inspection activities conducted for the biota consumption advisory signs during the prior year and identifying the entities to which copies of the MassDPH biota consumption advisory pamphlets were distributed during the prior year. EPA approved the Outreach Plan by letter dated July 16, 2019.

Since that time, GE has performed the activities described in the Outreach Plan and submitted annual reports on those activities (Arcadis 2020, 2021, 2022, 2023, 2024). The most recent report, which documented GE’s outreach activities in 2023, was the *2023 Annual Report on Biota Consumption Advisory Outreach Activities in Massachusetts*, dated February 29, 2024, which was approved by EPA by letter dated July 10, 2024.

As background, the Commonwealth of Massachusetts has a general state-wide consumption advisory for eating fish, shellfish, and waterfowl caught in waters of the Commonwealth. It also has specific biota consumption advisories for the freshwater bodies in Massachusetts. These advisories, issued by MassDPH, are based on the presence or potential presence of polychlorinated biphenyls (PCBs), mercury, and/or other chemicals in the tissue of the biota. The current biota consumption advisories for the Housatonic River in Massachusetts apply to the consumption of fish, frogs, and turtles from the River between Pittsfield and the Connecticut border and to the consumption of wood ducks and mallard ducks from the River between Pittsfield and Rising Pond in Great Barrington. These specific consumption advisories are based upon findings of PCBs in the tissues of these biota, although the Housatonic River is also subject to the general state-wide advisory.

2024 Annual Report on Biota Consumption Advisory Outreach Activities:
Housatonic Rest of River – Massachusetts

This report describes biota consumption advisory outreach activities performed by Arcadis on GE's behalf in 2024. Section 2 describes the inspection and replacement, as necessary, of signs in 2024. Section 3 describes the provision of written notices regarding biota consumption advisories in Massachusetts. Section 4 describes future outreach activities, including continued inspection and replacement of advisory signs, provision of biota consumption advisory pamphlets, and submission of annual reports on those activities.

2 Inspection, Maintenance, and Posting of Advisory Signs

During June and July 2024, the polyethylene biota consumption advisory signs that were previously posted at likely public access points along the Massachusetts portion of the Rest of River, the West Branch of the Housatonic River, and several Rest of River tributaries were inspected and replaced where necessary. The signs, both for the reaches of the Housatonic River and its tributaries between Pittsfield and Rising Pond in Great Barrington and for the reach of the River from Rising Pond to the Connecticut border, are depicted below as Figures 1 and 2, respectively. More details regarding the inspection and posting of these signs in 2024 are described below after the figures.

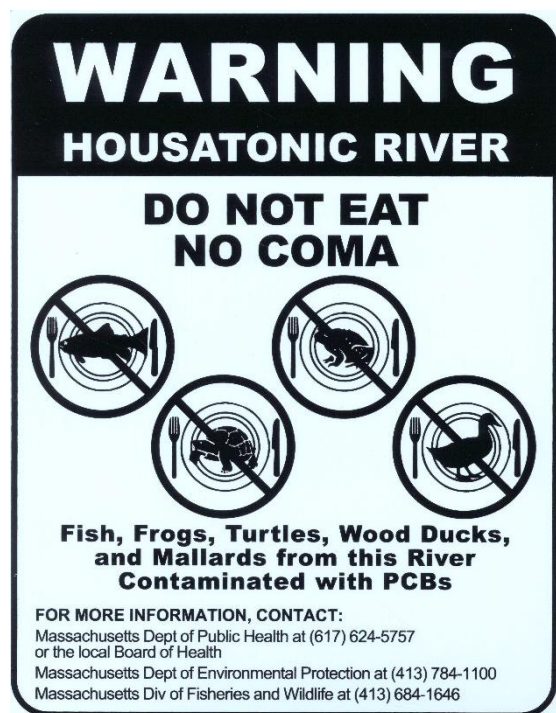


Figure 1. Massachusetts Fish, Frog, Turtle, Wood Duck, and Mallard Duck Consumption Advisory Sign for the Housatonic River and its Tributaries from Pittsfield South to Rising Pond in Great Barrington

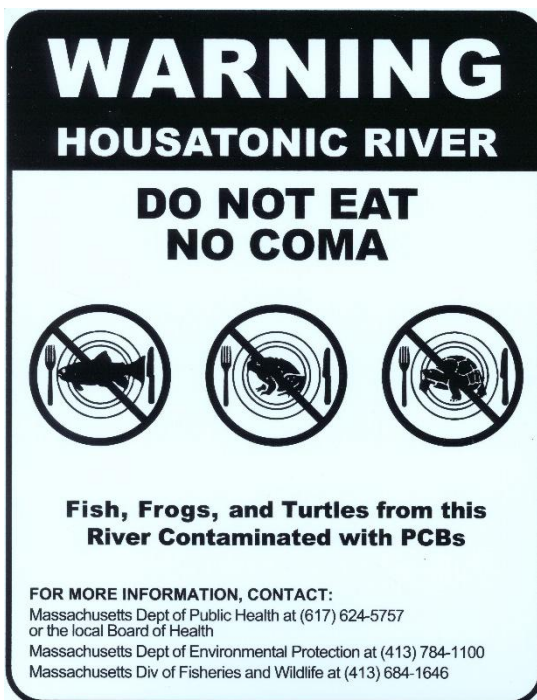


Figure 2. Massachusetts Fish, Frog, and Turtle Consumption Advisory Sign for the Housatonic River from Rising Pond Dam to the Connecticut Border

On June 7, 2024, GE notified EPA of its plans and estimated timetable for inspecting the previously posted signs.¹ Subsequently, on June 21, and July 2, 3, and 8-10, 2024, Arcadis, on behalf of GE, performed sign inspection and maintenance activities. Signs were inspected and replaced as necessary and photo documentation was obtained.

¹ In a June 17, 2021 conditional approval letter for GE's 2019 and 2020 annual reports, EPA stated that it was reviewing and discussing the current content of the signs with the State of Massachusetts, and that any modifications that EPA determines are necessary to the signs, such as including additional translations, updates to the imagery, and/or addition of a QR code linking the public to relevant information on the State's website regarding the biota consumption advisories, would be provided to GE. No such changes have been provided to GE to date.

2024 Annual Report on Biota Consumption Advisory Outreach Activities:
Housatonic Rest of River – Massachusetts

An additional sign was installed by GE on August 6, 2024, at the request of the City of Pittsfield and EPA, along the West Branch of the Housatonic River. That sign (using the Figure 1 format and posted at location ID WB-3) was installed at Westside Riverway Park on Dewey Avenue in Pittsfield and will be monitored in the future as part of the annual sign inspection program.

Table 1 lists the locations of all consumption advisory signs installed along the Rest of River and its tributaries in Massachusetts (including the newly installed sign at location WB-3), as well as their most recent installation date, their locational coordinates and elevation, and comments showing the results of the 2024 inspection for each of those signs, including any replacement activities performed. The locations of the consumption advisory signs from Pittsfield to Lee are depicted on Figure 3 (attached), the locations of the signs from Lee to Great Barrington are depicted on Figure 4 (attached), and the locations of the signs from Great Barrington to the Connecticut border are depicted on Figure 5 (attached). A sign photographic log is provided in Appendix A. Locational information is being maintained in a Geographic Information System (GIS) geospatial database and locational map, developed to assist with regular inspections and replacement of signage.

3 Provision of Biota Consumption Advisory Pamphlets

On May 31, 2024, Arcadis, on behalf of GE, distributed copies of the MassDPH pamphlet setting forth the biota consumption advisory for the Housatonic River (as well as the state-wide advisory), together with a cover letter, to fishing and hunting license distributors in Berkshire County and other relevant entities (listed below). Copies of the pamphlet were provided to those license distributors in both English and Spanish. Copies of the pamphlet provided (in both English and Spanish) are included in Appendix B.²

The entities that were provided biota consumption advisory pamphlets and cover letters in hard copy format were:

- The local Massachusetts Division of Fisheries and Wildlife (MassDFW) Western District Office at 88 Old Windsor Road in Dalton;
- The City of Pittsfield clerk's office;
- The following additional license vendors:
 - Dick's Sporting Goods – Pittsfield;
 - Walmart – Pittsfield;
 - Mill River General Store – Mill River;
 - Walmart – North Adams;
- The following game check stations:
 - Corner Grocery and Café – Worthington;
 - Avid Sports – Pittsfield;
 - Dave's Sporting Goods – Pittsfield;
 - Pete's Gun Shop – Adams;
 - Goshen General Store – Goshen;
 - Cheshire Sporting Goods – Cheshire;
- The following official weigh stations:
 - Onota Boat Livery – Pittsfield;
 - Taft's Tackle – Great Barrington;
 - Crea's Bait and Tackle – Pittsfield;
- The Boards of Health in Pittsfield, Dalton, Lenox, Lee, Stockbridge, West Stockbridge, Great Barrington, and Sheffield, as well as the Tri-Town Health Department; and
- Sportsmen's clubs in the MassDFW Western District, including those in Pittsfield, Lee, Lenox, and Stockbridge and the Berkshire County League of Sportsmen.

In addition, based on discussions with EPA, electronic copies of the informational pamphlets were provided to the town clerks' offices in Dalton, Lenox, Lee, Stockbridge, West Stockbridge, Great Barrington, Sheffield,

² In its June 17, 2021 conditional approval letter mentioned above, EPA stated that, in addition to reviewing the advisory signs, it was reviewing and discussing the current content of the MassDPH's informational pamphlets with the State. GE has not been notified of any resulting modifications to the text or format of the pamphlets.

2024 Annual Report on Biota Consumption Advisory Outreach Activities:
Housatonic Rest of River – Massachusetts

and Huntington on June 11, 2024. In addition, at the request of the Town of Lee, GE transmitted hard copies of the pamphlets (in both English and Spanish) to that Town on July 12, 2024.

It should be noted that Overwatch Outpost in Charlemont, MA, which had previously been provided biota consumption advisory pamphlets, is now closed; thus, it did not receive pamphlets in 2024 and will be removed from future distributions.

In its cover letters to all fishing and hunting license agents, GE requested these license agents to distribute the pamphlet to all persons obtaining a fishing or hunting license. In its letters to the Sportsmen's clubs and League of Sportsmen, GE requested that they inform their members of the biota consumption advisory for the Housatonic River. In addition, in all cover letters transmitting hard copies of the pamphlet, GE committed to providing the recipients with a reasonable number of additional pamphlets if requested. No additional pamphlets were requested in 2024.

In its cover letters to the town clerks' offices, GE noted that electronic copies of the pamphlet were being provided at EPA's request so that the towns could upload the pamphlets to their respective websites. In addition, GE committed to providing the recipients with hard copies of the pamphlet if requested. Apart from the Town of Lee's request (described above), no additional hard copies of the pamphlets were requested in 2024.

4 Future Activities

4.1 Inspection and Replacement of Advisory Signs

GE will continue to conduct annual inspections of the Housatonic River in Massachusetts to determine whether the consumption advisory signs that were placed at public access points are still present. If signs are missing, vandalized, or deemed illegible or if additional likely public access points are identified, GE will produce replacement or additional signs and post them at the appropriate locations. In addition, GE will ensure that the signs remain visible to the public and will provide maintenance through removal of obscuring vegetation and/or overgrowth.

In addition, if requested by the State of Massachusetts (the “State”), GE will provide additional signs to the State. At the State’s discretion, these additional signs will be posted and monitored by the State at additional locations outside the Housatonic River and the tributaries listed above.

Further, if, at another time outside the regularly scheduled inspections, EPA or Massachusetts Department of Environmental Protection (MassDEP) identifies a specific location or locations where the posting of a replacement or additional sign is warranted, GE will provide the requested sign(s) and post it/them at the appropriate location(s).

Signs will be posted so that, to the extent practicable, the bottom of the signs is no higher than six feet from the viewer’s ground level. Additionally, GE will update the GIS geospatial database and locational map of all sign locations as needed to assist with regular inspections and replacement of signage.

Prior to the inspections, GE will advise EPA of its plans and schedule for inspecting the existing signs and, as necessary, replacing them. Unless otherwise advised by EPA, any signs to be posted in 2025 as new or replacement signs will be those shown on Figures 1 and 2 above (depending on location).

In the event that, at any time, EPA advises GE that revisions to the signs are necessary, GE will consult with EPA, MassDEP, MassDFW, and MassDPH, as appropriate, regarding such revisions. Specifically, if, based on discussions with the State, EPA determines that modifications are necessary to the signs, such as including additional translations, updates to the imagery, and/or addition of a QR code linking the public to relevant information on the State’s website regarding the biota consumption advisories, EPA will advise GE of the modifications. In the event that new translations are necessary, EPA will provide those new translations to GE. If and when EPA advises GE of any necessary modifications to the signs, GE will provide a mock-up of the signs, in the designated languages, to EPA for final approval before new signs are fabricated for installation.

GE will repeat the sign inspection and maintenance activities on an annual basis until such time as the advisories are discontinued or this program is modified with EPA approval.

4.2 Provision of Biota Consumption Advisory Pamphlets

Also on an annual basis, GE will continue to provide fishing and hunting license distributors in Berkshire County and other relevant entities (listed below) with copies of the then-current MassDPH pamphlet setting forth the biota consumption advisory for the Housatonic River (as well as the state-wide advisory) and an appropriate cover letter. The pamphlet will be provided in both English and Spanish, and, in 2025, will be the same as the one included in Appendix B, also available at <https://www.mass.gov/doc/fish-and-waterfowl-consumption-advice-for-the->

2024 Annual Report on Biota Consumption Advisory Outreach Activities:
Housatonic Rest of River – Massachusetts

[housatonic-river-area-in-massachusetts/download](#) (English) and <https://www.mass.gov/doc/fish-and-waterfowl-consumption-advice-for-the-housatonic-river-area-in-massachusetts-spanish/download> (Spanish). Specifically, GE will provide that biota consumption advisory pamphlet (in both languages) and a cover letter in hard copy format to the following:

- The local MassDFW Western District Office at 88 Old Windsor Road in Dalton;
- The City of Pittsfield clerk's office;
- The following additional license vendors:
 - Dick's Sporting Goods – Pittsfield;
 - Walmart – Pittsfield;
 - Mill River General Store – Mill River;
 - Walmart – North Adams;
- The following game check stations:
 - Corner Grocery and Café – Worthington;
 - Avid Sports – Pittsfield;
 - Dave's Sporting Goods – Pittsfield;
 - Pete's Gun Shop – Adams;
 - Goshen General Store – Goshen;
 - Cheshire Sporting Goods – Cheshire;
- The following official weigh stations:
 - Onota Boat Livery – Pittsfield;
 - Taft's Tackle – Great Barrington;
 - Crea's Bait and Tackle – Pittsfield;
- The Boards of Health in Pittsfield, Dalton, Lenox, Lee, Stockbridge, West Stockbridge, Great Barrington, and Sheffield, as well as the Tri-Town Health Department; and
- All Sportsmen's clubs in the MassDFW Western District, including those in Pittsfield, Lee, Lenox, and Stockbridge and the Berkshire County League of Sportsmen.

In addition, electronic copies of the informational pamphlets will be provided to the town clerks' offices in Dalton, Lenox, Lee, Stockbridge, West Stockbridge, Great Barrington, Sheffield, and Huntington. Also, GE will specifically ask the Town of Lee whether it wishes again to receive hard copies of the pamphlets, and if it does, GE will provide those copies.

In its cover letters to all fishing and hunting license agents, GE will request these license agents to distribute the pamphlet to all persons obtaining a fishing or hunting license. In its letters to the Sportsmen's clubs and League of Sportsmen, GE will request that they inform their members of the biota consumption advisory for the Housatonic River. In addition, in all cover letters transmitting hard copies of the pamphlet, GE will commit to provide the recipients with a reasonable number of additional pamphlets in either English or Spanish if requested. In its cover letters to the town clerks' offices, GE will note that electronic copies of the pamphlet are being provided so that the towns can upload the pamphlet to their respective websites. In addition, GE will commit to providing the recipients with hard copies of the pamphlet if requested.

2024 Annual Report on Biota Consumption Advisory Outreach Activities:
Housatonic Rest of River – Massachusetts

In addition, GE anticipates that, in the event that EPA or the State determines that any modifications to the text or format of the MassDPH's informational pamphlets (including additional translations) are necessary, EPA or the State will provide GE with revised pamphlets prepared by MassDPH, including any new translations, or direct GE to a website where the revised pamphlets can be found, prior to GE's distribution of those pamphlets.

GE will repeat the pamphlet distributions on an annual basis until such time as the advisories are discontinued or this program is modified with EPA approval.

4.3 Other Activities

In addition to the activities described above, in the event that EPA, MassDEP, and/or MassDPH requests GE to provide information or technical assistance in connection with their public service announcements or public meetings to publicize MassDPH's biota consumption advisories, GE will provide such assistance.

4.4 Reporting

Continuing for 2025 and subsequent years, GE will prepare and submit to EPA an annual report that summarizes the inspection and replacement activities conducted for the biota consumption advisory signs during the prior year and identifies the locations where copies of the MassDPH biota consumption advisory pamphlets were distributed during that year. In addition, GE will review the active license agent locations and provide in the annual report an updated list of the locations where the biota consumption advisory pamphlets will be sent in the following year. Further, in the annual report, GE will propose any changes to the biota consumption advisory outreach program or the current plan.

GE will submit the annual report for 2025 by February 28, 2026, and will thereafter submit such annual reports by the end of February in the year following the subject year.

5 References

Arcadis (Arcadis U.S., Inc.). 2019. *Biota Consumption Advisory Outreach Plan – Housatonic Rest of River – Massachusetts*. Prepared for General Electric Company. July 2019.

Arcadis. 2020. *2019 Annual Report – Biota Consumption Advisory Outreach – Housatonic Rest of River – Massachusetts*. Prepared for General Electric Company. February 2020.

Arcadis. 2021. *2020 Annual Report – Biota Consumption Advisory Outreach – Housatonic Rest of River – Massachusetts*. Prepared for General Electric Company. February 2021.

Arcadis. 2022. *2021 Annual Report – Biota Consumption Advisory Outreach – Housatonic Rest of River – Massachusetts*. Prepared for General Electric Company. February 2022.

Arcadis. 2023. *2022 Annual Report – Biota Consumption Advisory Outreach – Housatonic Rest of River – Massachusetts*. Prepared for General Electric Company. February 2023.

Arcadis. 2024. *2023 Annual Report – Biota Consumption Advisory Outreach – Housatonic Rest of River – Massachusetts*. Prepared for General Electric Company. February 2024.

Table

Table 1
Summary of Consumption Advisory Sign Locations and Maintenance Activities
Housatonic River - 2024 Biota Consumption Advisory Sign Maintenance
General Electric Company
Pittsfield, Massachusetts



Location Description	2024 Location ID	Reach/ Tributary	Most Recent Sign Installation Date	Coordinates ¹		Elevation (feet) ¹	Comments
				North	West		
Fred Garner Park (Pittsfield)	HR-01	4	20-Jun-2022	42.4355	73.2497	958	Found sign on canoe launch information board, left bank of river, downstream of Pomeroy Ave. bridge.
Pomeroy Ave. Bridge (Pittsfield)	HR-02	5A	10-Sep-2019	42.4300	73.2413	987	Found sign on sign post, right bank of river, upstream of bridge.
Canoe Meadows (Pittsfield)	HR-03	5A	Jan 2020 ²	42.4305	73.2373	985	Found sign on Mass Audubon information board.
Holmes Rd. Bridge (Pittsfield)	HR-04	5A	17-Jun-2021	42.4302	73.2388	990	Found sign on tree, right bank of river, upstream of bridge. Location was cut out so that sign could be seen.
Holmes Rd. Bridge (Pittsfield)	HR-05	5A	27-Jul-2023	42.4300	73.2391	994	Found sign on sign post, left bank of river, upstream of bridge, location was cut out.
Holmes Rd. Bridge (Pittsfield)	HR-06	5A	20-Jun-2022	42.4300	73.2385	988	Found sign on tree, right bank of river, downstream of bridge. Location was cut out so that sign could be seen.
Holmes Rd. Bridge (Pittsfield)	HR-07	5A	10-Sep-2019	42.4293	73.2386	946	Found sign on sign post, left bank of river, downstream of bridge. Location was cut out so that sign could be seen.
New Lenox Rd (Lenox)	HR-08	5B	18-Sep-2019	42.3941	73.2431	934	Found sign on sign post, John Decker Canoe Launch overflow parking area, left bank of river, downstream of New Lenox Rd. Bridge. Location was cut out so that sign could be seen.
New Lenox Rd (Lenox)	HR-09	5B	17-Jun-2021	42.3937	73.2423	954	Found sign on John Decker Canoe Launch information board, left bank of river, downstream of bridge
Roaring Brook Rd (Lenox)	HR-10	5C	18-Jun-2021	42.37246	73.24040	984	Found sign on tree, right bank of river.
Woodland Rd (Lee)	HR-11	5C	18-Jun-2021	42.3658	73.2386	983	Found sign on tree, at edge of Woodland Rd., right bank of the river, adjacent to roadway for old canoe/boat launch area.
Woodland Rd (Lee)	HR-12	5C	18-Jun-2021	42.3630	73.2385	960	Found sign on tree, right bank of river, at canoe/boat launch area. Location was cut out.
Woodland Rd (Lee) (Adjacent to Woods Pond)	HR-13	6	18-Jun-2021	42.3486	73.2368	982	Found sign on tree, at edge of Woods Pond. Location needed some cutting.
Valley St (Lee) (Adjacent to Woods Pond)	HR-14	6	18-Jun-2021	42.3485	73.2406	968	Found sign on tree, at edge of Woods Pond.
Valley St (Lee) (Adjacent to Woods Pond)	HR-15	6	18-Jun-2021	42.3494	73.2415	955	Found sign on tree, at edge of Woods Pond. Location was cut out so that sign could be seen.
Housatonic St. Abutments (Woods Pond Footbridge - Lee)	HR-16	6	24-Sep-2019	42.3495	73.2434	933	Found sign on sign post, right bank of river, upstream side of footbridge.
Housatonic St. Abutments (Woods Pond Footbridge - Lenox)	HR-17	6	25-Sep-2019	42.3499	73.2439	937	Found sign on sign post, adjacent to canoe access dock, left bank of river, downstream of footbridge.
Walker St./Mill St. Bridge (Lenoxdale)	HR-18	7A	25-Sep-2019	42.3330	73.2463	939	Found sign on sign post, left bank of river, upstream of bridge. Location was cut out so that sign could be seen.
Golden Hill Rd. Bridge (Lee)	HR-19	7B	25-Sep-2019	42.3220	73.2419	894	Found sign on telephone pole, upstream of bridge, right bank of river. Location was cut out so that sign could be seen.

Table 1
Summary of Consumption Advisory Sign Locations and Maintenance Activities
Housatonic River - 2024 Biota Consumption Advisory Sign Maintenance
General Electric Company
Pittsfield, Massachusetts



Location Description	2024 Location ID	Reach/ Tributary	Most Recent Sign Installation Date	Coordinates ¹		Elevation (feet) ¹	Comments
				North	West		
Golden Hill Rd. Bridge (Lee)	HR-20	7B	25-Sep-2019	42.3218	73.2423	908	Found sign on sign post, downstream of bridge, left bank of river. Location was cut out so that sign could be seen.
Route 20 Bridge (Lee)	HR-21	7D	8-Oct-2019	42.3102	73.2544	879	Found sign on sign post, right bank of river, downstream of bridge.
West Park St. Bridge (Lee)	HR-22	7D	8-Oct-2019	42.3036	73.2509	895	Found sign on tree, right bank of river, downstream of bridge. Location was cut out so that sign could be seen.
West Park St. Bridge (Lee)	HR-23	7D	8-Oct-2019	42.3036	73.2512	898	Found sign on tree, left bank of river, downstream of bridge.
Behind Big-Y Store (Lee)	HR-24	7D	8-Oct-2019	42.2957	73.2415	873	Found sign on sign post, right bank of river. Location was cut out so that sign could be seen.
Old Pleasant St. Bridge (Lee)	HR-25	7D	8-Oct-2019	42.2938	73.2413	870	Found sign on sign post, right bank of river, upstream of bridge. Location was cut out so that sign could be seen.
Route 102 Bridge (Lee)	HR-26	7D	9-Oct-2019	42.2930	73.2403	874	Found sign on sign post, right bank of river, downstream of bridge, at river access area where Goose Pond Brook meets the Housatonic River.
Tyringham Rd. (Lee)	HR-27	7D	28-Jun-2021	42.2849	73.2395	884	Found sign on sign post, at pull-off area on Tyringham Road, right bank of river. Location was cut out so that sign could be seen.
Meadow St. Bridge (Off of Route 102 in South Lee)	HR-28	7D	28-Jun-2021	42.2784	73.2753	844	Found sign on sign post, left bank of river, upstream of bridge.
Meadow St. Bridge (Off of Route 102 in South Lee)	HR-29	7E	28-Jun-2021	42.2783	73.2754	847	Found sign on sign post, left bank of river, downstream of bridge.
Park St. Foot Bridge (Stockbridge)	HR-30	7F	28-Jun-2021	42.2783	73.3073	845	Found sign on telephone pole, near trailhead, upstream of bridge, left bank of river.
Route 7 / Park St. Bridge (Stockbridge)	HR-31	7F	13-Oct-2019	42.2791	73.3137	832	Found sign on sign post, at canoe access area, adjacent to Park St. park, left bank of river, upstream of bridge.
West Main St. Bridge (Stockbridge)	HR-32	7F	26-Jul-2023	42.2834	73.3263	831	Adjacent to Stockbridge Golf Course. Found sign on sign post, right bank of the river, downstream side of bridge, this location was cut out.
Butler Rd. Bridge (Glendale)	HR-33	7F	13-Oct-2019	42.2869	73.3322	831	Found sign on tree, right bank of river, upstream of bridge, bridge is closed to vehicles, footbridge only.
Butler Rd. Bridge (Glendale)	HR-34	7F	30-Jun-2021	42.2871	73.3323	822	Found sign on the ground, left bank of river, upstream of bridge. Reinstalled the same sign on the same tree.
Glendale Middle Rd. Bridge (Glendale)	HR-35	7G	13-Oct-2019	42.2829	73.3420	814	Found sign on sign post, at canoe access area, right bank of river, downstream of bridge, which is now a one lane bridge. Location was cut out so that sign could be seen.
Route 183 (Stockbridge)	HR-36	7H	30-Jun-2021	42.2777	73.3596	784	Found sign on tree, replaced top screw holding sign on tree, across from intersection with Dugway Rd., at pull-off area on Route 183, river access area, left bank of river.
Route 183 (Stockbridge)	HR-37	7H	30-Jun-2021	42.2765	73.3602	806	Found sign on tree, at road to former Blue Moon Kennel off of Route 183, at river access area, left bank of river.
Route 183 (Housatonic)	HR-38	8	13-Oct-2019	42.2456	73.3563	723	Found sign on tree, just north of Rising Pond Dam, upstream of dam, right bank of river/pond. Location was cut out so that sign could be seen.

Table 1
Summary of Consumption Advisory Sign Locations and Maintenance Activities
Housatonic River - 2024 Biota Consumption Advisory Sign Maintenance
General Electric Company
Pittsfield, Massachusetts



Location Description	2024 Location ID	Reach/ Tributary	Most Recent Sign Installation Date	Coordinates ¹		Elevation (feet) ¹	Comments
				North	West		
Division St. Bridge (Great Barrington)	HR-39	9	13-Oct-2019	42.2318	73.3546	764	Found sign on telephone pole, at USGS gage station and river access area, right bank of river, upstream of bridge (Note: A new temporary bridge has been installed at this location).
Housatonic Flats (Great Barrington)	HR-40	9	Jul 2023 ³	42.21643	73.34443	-	Found sign installed on kiosk at start of Housatonic Flats trail, off of Rt. 7.
Bridge St. (Great Barrington)	HR-41	9	13-Oct-2019	42.1933	73.3590	672	Found sign on sign post, behind old Searles Middle School, at canoe access area, left bank of river, upstream of Bridge St. bridge.
Brookside Rd. (Great Barrington)	HR-42	9	13-Oct-2019	42.1764	73.3598	694	Found sign on sign post, at canoe access area, left bank of river, upstream of Brookside Rd. bridge, which is closed at the present time. This location was cut out.
East Sheffield Rd. (Great Barrington)	HR-43	9	30-Jun-2021	42.1738	73.3569	681	Found sign on tree, west side of road, right bank of river.
East Sheffield Rd. (Great Barrington)	HR-44	9	14-Oct-2019	42.1627	73.3592	672	Found sign on tree, at pull-off area on East Sheffield Rd., adjacent to river, west side of road, right bank of river.
Boardman Rd. (Sheffield)	HR-45	9	3-Sep-2021	42.1598	73.3594	669	Found sign on tree, at access road to farmer's field, west side of Boardman Rd., right bank of river, elevation approximate.
Kellogg Rd. Bridge (Sheffield)	HR-46	9	14-Oct-2019	42.1444	73.3600	670	Found sign on sign post, adjacent to Appalachian Trail, left bank of river, upstream of bridge.
Route 7 Rest Area (Sheffield)	HR-47	9	11-Jul-2022	42.1294	73.3622	674	At mile marker 6.5. Found sign on sign post, left bank of river.
Sheffield Covered Bridge (Sheffield)	HR-48	9	14-Oct-2019	42.1236	73.3547	634	Found sign on wooden post, at covered bridge parking area and steps down to river, left bank of river, downstream of covered bridge.
Route 7 Bridge (Ashley Falls)	HR-49	9	6-Jul-2023	42.0748	73.3335	657	Found sign on sign post, left bank of river, adjacent to Ashley Falls USGS gaging station, upstream side of bridge.
Route 7A Bridge (Ashley Falls)	HR-50	9	11-Dec-2020	42.06987	73.34050	665	Found sign on sign post, left bank of river, downstream of bridge. Location was cut out so that sign could be seen.
Rannapo Rd. Bridge (Ashley Falls)	HR-51	9	30-Jun-2021	42.0588	73.3488	675	Found sign on sign post, left bank of river, upstream side of bridge, end of trail off Rannapo Rd. that leads to Housatonic River, adjacent to where Stony Brook meets Housatonic River.
West Branch at South St. Bridge (Pittsfield)	WB-1	West Branch Housatonic River	1-Aug-2022	42.43624	73.25702	970	Found sign on sign post, downstream side of South St. (Route 7 and 20) bridge, left bank of river
West Branch Upstream of Confluence (Pittsfield)	WB-2	West Branch Housatonic River	2-Aug-2022	42.43384	73.25090	967	Found sign on tree along walking path adjacent to riverbank, upstream of confluence of East and West Branches of Housatonic River.
West Branch on Dewey Ave. (Pittsfield) ⁴	WB-3	West Branch Housatonic River	6-Aug-2024	42.45535	73.2608	-	Installed new sign on sign post at the top of bank of the West Branch of the Housatonic River, in the Westside Riverway Park on Dewey Ave.
Wampenum Brook Confluence (Pittsfield)	WPB-1	5A/Wampenum Brook	2-Aug-2022	42.42927	73.24905	968	Found sign on sign post where Wampenum Brook (brook from Morewood Lake) meets the Housatonic River.

Table 1
Summary of Consumption Advisory Sign Locations and Maintenance Activities
Housatonic River - 2024 Biota Consumption Advisory Sign Maintenance
General Electric Company
Pittsfield, Massachusetts

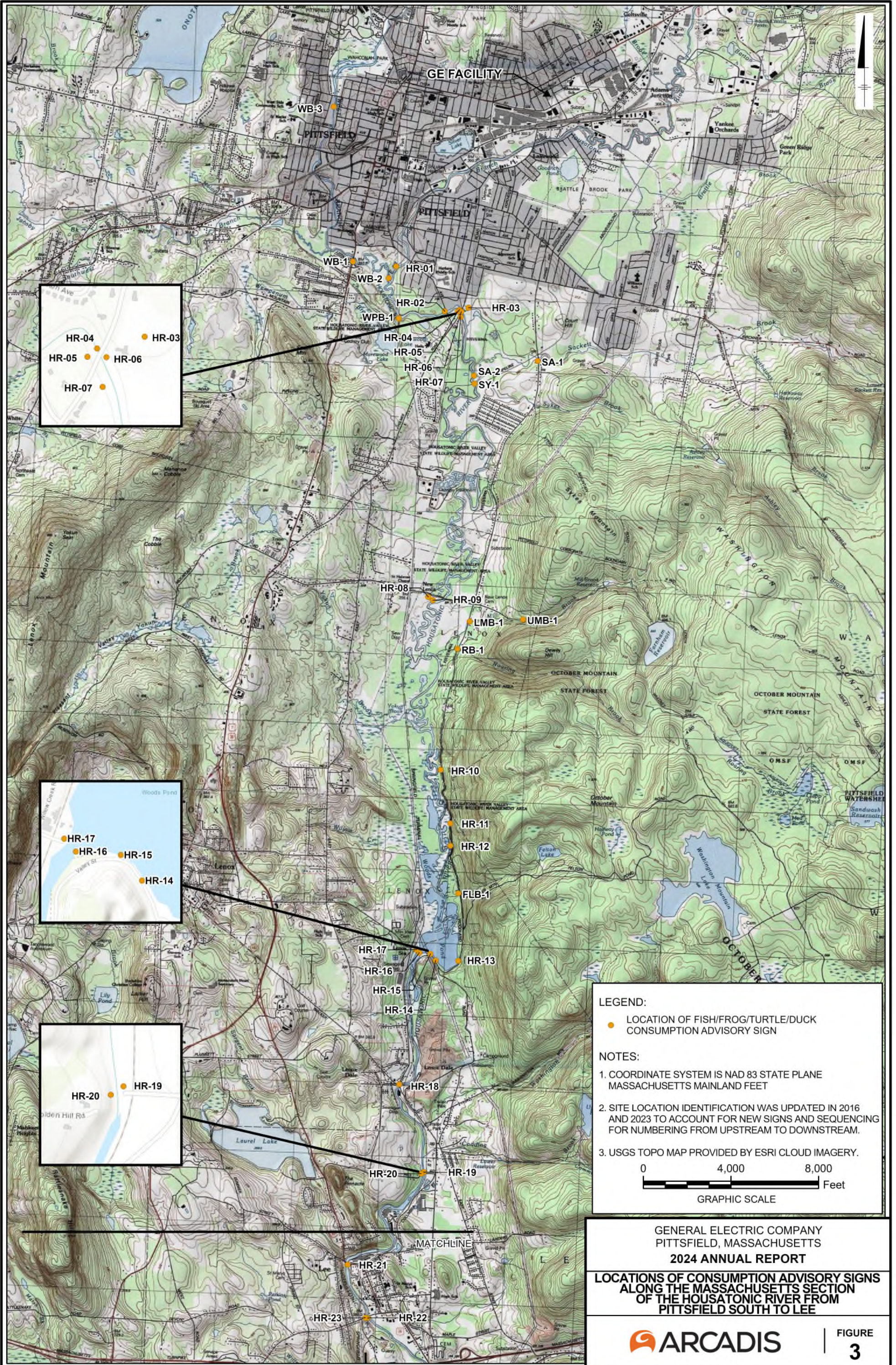


Location Description	2024 Location ID	Reach/Tributary	Most Recent Sign Installation Date	Coordinates ¹		Elevation (feet) ¹	Comments
				North	West		
Sackett Brook at East New Lenox Rd (Pittsfield)	SA-1	Sackett Brook	29-Jul-2022	42.42447	73.22542	998	Found sign on sign post where East New Lenox Rd. crosses over Sackett Brook, right side of brook, downstream of bridge.
Sackett Brook Confluence (Pittsfield)	SA-2	5A/Sackett Brook	31-Jul-2023	42.42237	73.23613	948	Found sign on sign post where Sackett Brook meets the Housatonic River.
Sykes Brook Confluence (Pittsfield)	SY-1	5A/Sykes Brook	28-Jul-2023	42.42124	73.23603	923	Found sign on sign post where Sykes Brook meets the Housatonic River.
Upper Mill Brook (Lenox)	UMB-1	Mill Brook	29-Jul-2022	42.39154	73.22650	1,147	Found sign on tree where New Lenox Rd. crosses over Mill Brook, right side of brook, downstream of bridge.
Lower Mill Brook (Lenox)	LMB-1	Mill Brook	28-Jul-2022	42.39114	73.23631	994	Found sign on sign post where Roaring Brook Rd. crosses over Mill Brook, right side of brook, downstream of bridge. Location was cut out so that sign could be seen.
Roaring Brook (Lenox)	RB-1	Roaring Brook	28-Jul-2022	42.38768	73.23807	981	Found sign on tree where Roaring Brook Rd. crosses over Roaring Brook, left side of brook, downstream of bridge.
Felton Lake Brook (Lee)	FLB-1	Felton Lake Brook	28-Jul-2022	42.35705	73.23689	1,013	Found sign on tree where Woodland Rd. crosses over Felton Lake Brook, left side of brook, downstream side of bridge.

Notes:

- Units of Coordinates are in degrees, as measured with iPad global positioning system-based Maps application. Elevation in feet measured using Compass Deluxe application.
- The sign at this location is a laminated photocopy of the sign attached to the Canoe Meadows information board by the Massachusetts Audubon Society. Its presence was originally documented by Arcadis in an inspection conducted in January 2020, as noted in the 2019 Annual Report.
- The sign at this location was provided to the Berkshire Natural Resources Council by GE in June 2022 to post. The sign was not observed to be present by Arcadis during a July 11, 2022 visit, conducted as part of the 2022 sign inspection and maintenance activities, but was observed during the 2023 inspection on July 6, 2023, as documented in the 2023 Annual Report.
- The sign at this location was installed at the request of the City of Pittsfield and EPA. The location is new for 2024.
- Reach Designations:
 Reach 4, Lyman Street Bridge to the Confluence
 Reach 5, Confluence to Woods Pond, further divided into the following subreaches:
 – Reach 5A (Confluence to the Pittsfield Wastewater Treatment Plant)
 – Reach 5B (Pittsfield WWTP to Roaring Brook)
 – Reach 5C (Roaring Brook to the start of Woods Pond)
 Reach 6, Woods Pond
 Reach 7, Woods Pond Dam to Rising Pond, further divided into the following subreaches:
 – Reach 7A (Woods Pond Dam to the Columbia Mill Dam Impoundment)
 – Reach 7B (Columbia Mill Dam Impoundment)
 – Reach 7C (Former Eagle Mill Dam Impoundment)
 – Reach 7D (Former Eagle Mill Dam to the Willow Mill Dam Impoundment)
 – Reach 7E (Willow Mill Dam Impoundment)
 – Reach 7F (Willow Mill Dam to the Glendale Dam Impoundment)
 – Reach 7G (Glendale Dam Impoundment)
 – Reach 7H (Glendale Dam to Rising Pond)
 Reach 8, Rising Pond
 Reach 9, Rising Pond Dam to the Massachusetts/Connecticut border

Figures



LEGEND:

- LOCATION OF FISH/FROG/TURTLE/DUCK CONSUMPTION ADVISORY SIGN

NOTES:

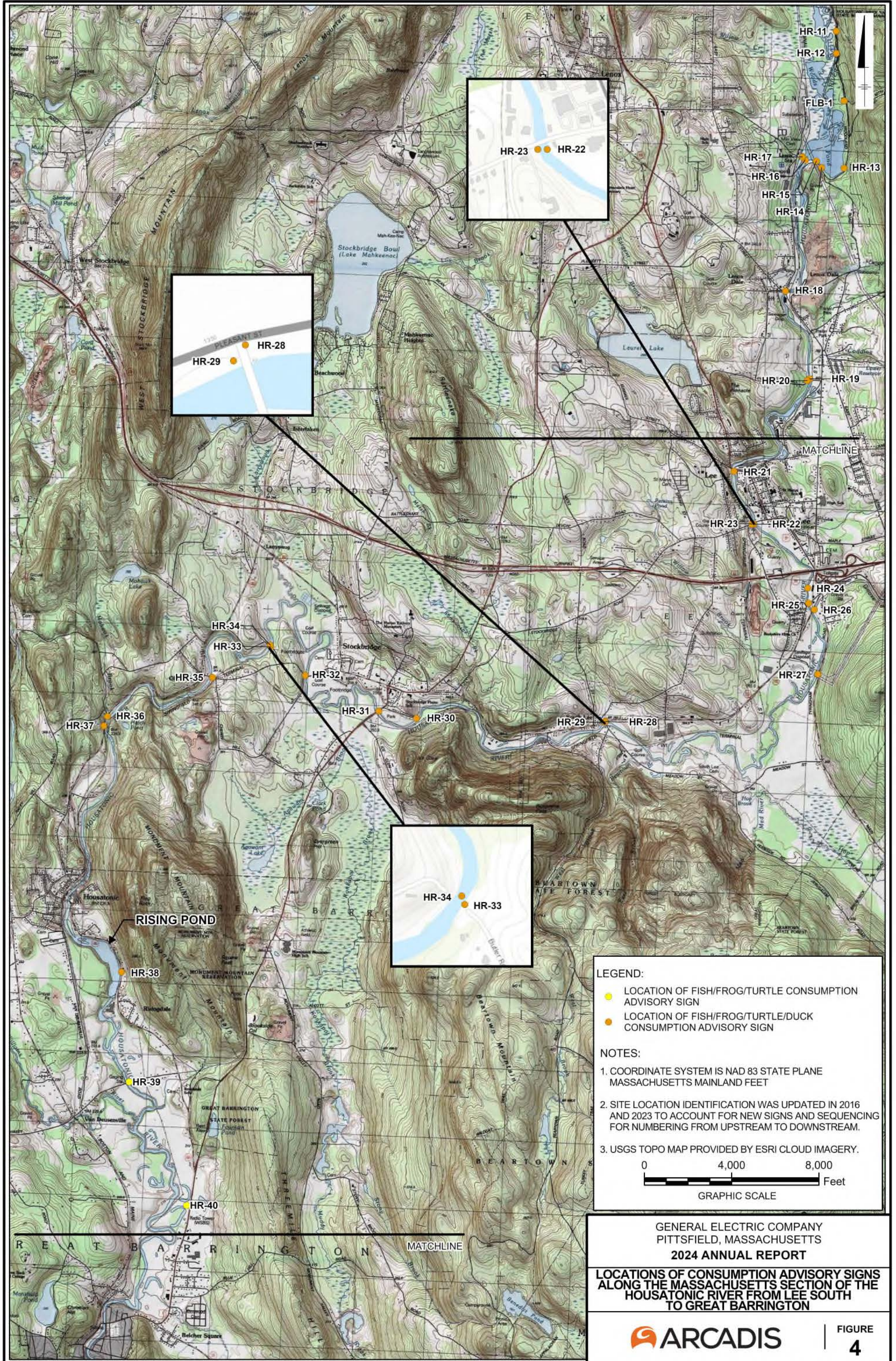
1. COORDINATE SYSTEM IS NAD 83 STATE PLANE MASSACHUSETTS MAINLAND FEET
2. SITE LOCATION IDENTIFICATION WAS UPDATED IN 2016 AND 2023 TO ACCOUNT FOR NEW SIGNS AND SEQUENCING FOR NUMBERING FROM UPSTREAM TO DOWNSTREAM.
3. USGS TOPO MAP PROVIDED BY ESRI CLOUD IMAGERY.

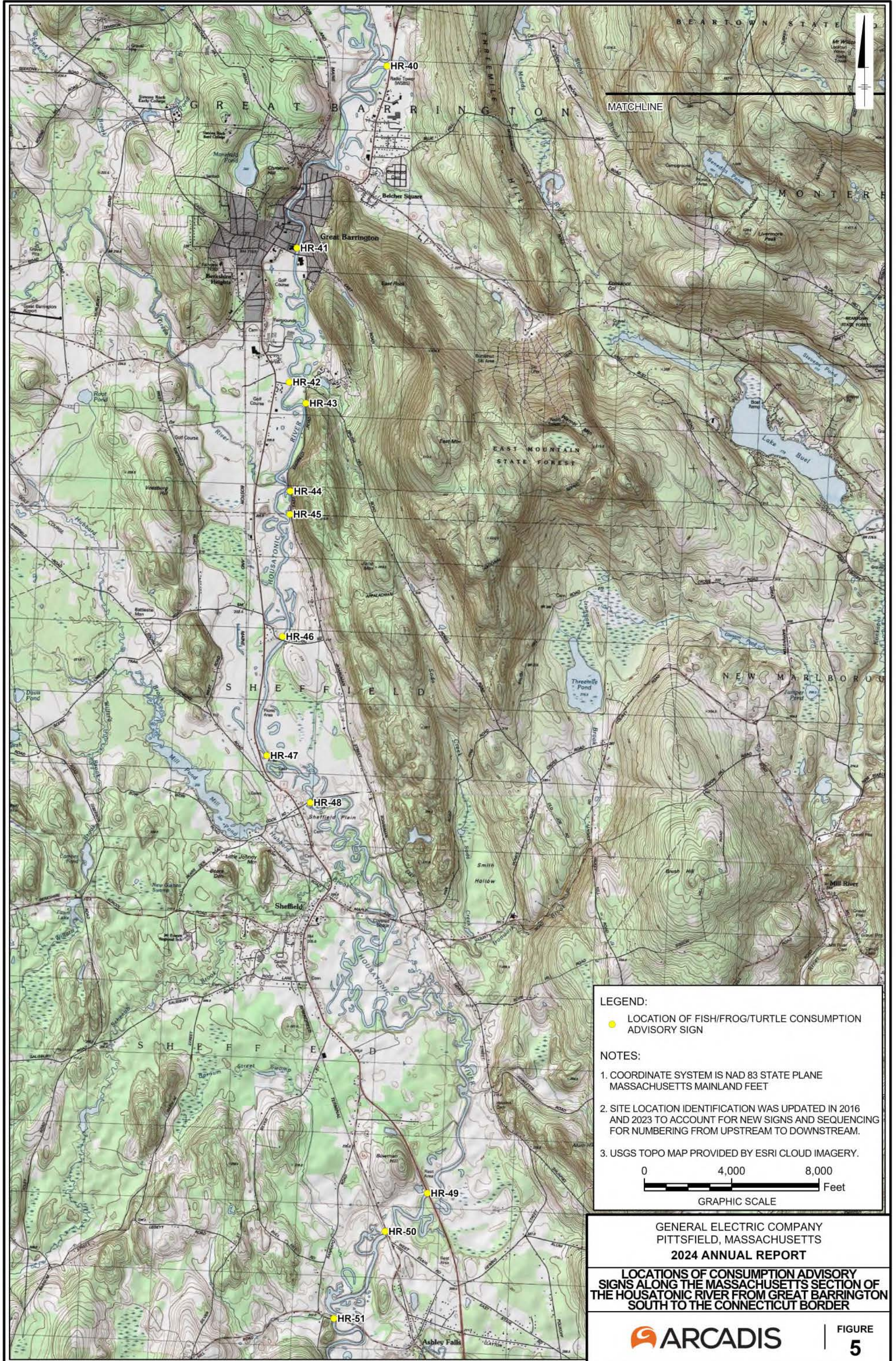
0 4,000 8,000 Feet
GRAPHIC SCALE

GENERAL ELECTRIC COMPANY
PITTSFIELD, MASSACHUSETTS
2024 ANNUAL REPORT

**LOCATIONS OF CONSUMPTION ADVISORY SIGNS
ALONG THE MASSACHUSETTS SECTION
OF THE HOUSATONIC RIVER FROM
PITTSFIELD SOUTH TO LEE**

ARCADIS | **FIGURE 3**





Appendix A

2024 Consumption Advisory Sign Photographic Log

PHOTOGRAPH LOG

Housatonic River
2024 Biota Consumption Advisory Sign Maintenance
General Electric Company
Pittsfield, Massachusetts



Site Name:
Fred Garner Park (Pittsfield)

Site Location:
HR-01

Date Photograph Taken:
July 9, 2024

Comments:
Found sign on canoe launch information board, left bank of river, downstream of Pomeroy Ave. bridge.



Site Name:
Pomeroy Ave. Bridge (Pittsfield)

Site Location:
HR-02

Date Photograph Taken:
July 9, 2024

Comments:
Found sign on sign post, right bank of river, upstream of bridge.

PHOTOGRAPH LOG

Housatonic River
2024 Biota Consumption Advisory Sign Maintenance
General Electric Company
Pittsfield, Massachusetts



Site Name:
Canoe Meadows (Pittsfield)

Site Location:
HR-03

Date Photograph Taken:
July 9, 2024

Comments:
Found sign on Mass Audubon information board.



Site Name:
Holmes Rd. Bridge (Pittsfield)

Site Location:
HR-04

Date Photograph Taken:
July 8, 2024

Comments:
Found sign on tree, right bank of river, upstream of bridge. Location was cut out so that sign could be seen.

PHOTOGRAPH LOG

Housatonic River
2024 Biota Consumption Advisory Sign Maintenance
General Electric Company
Pittsfield, Massachusetts



Site Name:
Holmes Rd. Bridge (Pittsfield)

Site Location:
HR-05

Date Photograph Taken:
July 8, 2024

Comments:
Found sign on sign post, left bank of river, upstream of bridge, location was cut out.



Site Name:
Holmes Rd. Bridge (Pittsfield)

Site Location:
HR-06

Date Photograph Taken:
July 8, 2024

Comments:
Found sign on tree, right bank of river, downstream of bridge. Location was cut out so that sign could be seen.

PHOTOGRAPH LOG

Housatonic River
2024 Biota Consumption Advisory Sign Maintenance
General Electric Company
Pittsfield, Massachusetts



Site Name:
Holmes Rd. Bridge (Pittsfield)

Site Location:
HR-07

Date Photograph Taken:
July 8, 2024

Comments:
Found sign on sign post, left bank of river, downstream of bridge. Location was cut out so that sign could be seen.



Site Name:
New Lenox Rd (Lenox)

Site Location:
HR-08

Date Photograph Taken:
July 3, 2024

Comments:
Found sign on sign post, John Decker Canoe Launch overflow parking area, left bank of river, downstream of New Lenox Rd. Bridge. Location was cut out so that sign could be seen.

PHOTOGRAPH LOG

Housatonic River
2024 Biota Consumption Advisory Sign Maintenance
General Electric Company
Pittsfield, Massachusetts



Site Name:
New Lenox Rd (Lenox)

Site Location:
HR-09

Date Photograph Taken:
July 3, 2024

Comments:
Found sign on John Decker Canoe Launch information board, left bank of river, downstream of bridge.



Site Name:
Roaring Brook Rd (Lenox)

Site Location:
HR-10

Date Photograph Taken:
July 3, 2024

Comments:
Found sign on tree, right bank of river.

PHOTOGRAPH LOG

Housatonic River
2024 Biota Consumption Advisory Sign Maintenance
General Electric Company
Pittsfield, Massachusetts



Site Name:
Woodland Rd (Lee)

Site Location:
HR-11

Date Photograph Taken:
July 3, 2024

Comments:
Found sign on tree, at edge of Woodland Rd., right bank of the river, adjacent to roadway for old canoe/boat launch area.



Site Name:
Woodland Rd (Lee)

Site Location:
HR-12

Date Photograph Taken:
July 3, 2024

Comments:
Found sign on tree, right bank of river, at canoe/boat launch area. Location was cut out.

PHOTOGRAPH LOG

Housatonic River
2024 Biota Consumption Advisory Sign Maintenance
General Electric Company
Pittsfield, Massachusetts



Site Name:

Woodland Rd (Lee) (Adjacent to Woods Pond)

Site Location:

HR-13

Date Photograph Taken:

July 3, 2024

Comments:

Found sign on tree, at edge of Woods Pond. Location needed some cutting.



Site Name:

Valley St (Lee) (Adjacent to Woods Pond)

Site Location:

HR-14

Date Photograph Taken:

July 3, 2024

Comments:

Found sign on tree, at edge of Woods Pond.

PHOTOGRAPH LOG

Housatonic River
2024 Biota Consumption Advisory Sign Maintenance
General Electric Company
Pittsfield, Massachusetts



Site Name:

Valley St (Lee) (Adjacent to Woods Pond)

Site Location:

HR-15

Date Photograph Taken:

July 3, 2024

Comments:

Found sign on tree, at edge of Woods Pond. Location was cut out so that sign could be seen.



Site Name:

Housatonic St. Abutments
(Woods Pond Footbridge - Lee)

Site Location:

HR-16

Date Photograph Taken:

July 3, 2024

Comments:

Found sign on signpost, right bank of river, upstream side of footbridge.

PHOTOGRAPH LOG

Housatonic River
2024 Biota Consumption Advisory Sign Maintenance
General Electric Company
Pittsfield, Massachusetts



Site Name:
Housatonic St. Abutments
(Woods Pond Footbridge -
Lenox)

Site Location:
HR-17

Date Photograph Taken:
July 3, 2024

Comments:
Found sign on sign post,
adjacent to canoe access dock,
left bank of river, downstream of
footbridge.



Site Name:
Walker St./Mill St. Bridge
(Lenoxdale)

Site Location:
HR-18

Date Photograph Taken:
July 3, 2024

Comments:
Found sign on sign post, left
bank of river, upstream of
bridge. Location was cut out so
that sign could be seen.

PHOTOGRAPH LOG

Housatonic River
2024 Biota Consumption Advisory Sign Maintenance
General Electric Company
Pittsfield, Massachusetts



Site Name:
Golden Hill Rd. Bridge (Lee)

Site Location:
HR-19

Date Photograph Taken:
July 3, 2024

Comments:
Found sign on telephone pole, upstream of bridge, right bank of river. Location was cut out so that sign could be seen.



Site Name:
Golden Hill Rd. Bridge (Lee)

Site Location:
HR-20

Date Photograph Taken:
July 3, 2024

Comments:
Found sign on sign post, downstream of bridge, left bank of river. Location was cut out so that sign could be seen.

PHOTOGRAPH LOG

Housatonic River
2024 Biota Consumption Advisory Sign Maintenance
General Electric Company
Pittsfield, Massachusetts



Site Name:
Route 20 Bridge (Lee)

Site Location:
HR-21

Date Photograph Taken:
July 3, 2024

Comments:
Found sign on signpost, right bank of river, downstream of bridge.



Site Name:
West Park St. Bridge (Lee)

Site Location:
HR-22

Date Photograph Taken:
July 3, 2024

Comments:
Found sign on tree, right bank of river, downstream of bridge. Location was cut out so that sign could be seen.

PHOTOGRAPH LOG

Housatonic River
2024 Biota Consumption Advisory Sign Maintenance
General Electric Company
Pittsfield, Massachusetts



Site Name:
West Park St. Bridge (Lee)

Site Location:
HR-23

Date Photograph Taken:
July 3, 2024

Comments:
Found sign on tree, left bank of river, downstream of bridge.



Site Name:
Behind Big-Y Store (Lee)

Site Location:
HR-24

Date Photograph Taken:
July 3, 2024

Comments:
Found sign on sign post, right bank of river. Location was cut out so that sign could be seen.

PHOTOGRAPH LOG

Housatonic River
2024 Biota Consumption Advisory Sign Maintenance
General Electric Company
Pittsfield, Massachusetts



Site Name:
Old Pleasant St. Bridge (Lee)

Site Location:
HR-25

Date Photograph Taken:
July 3, 2024

Comments:
Found sign on sign post, right bank of river, upstream of bridge. Location was cut out so that sign could be seen.



Site Name:
Route 102 Bridge (Lee)

Site Location:
HR-26

Date Photograph Taken:
July 3, 2024

Comments:
Found sign on sign post, right bank of river, downstream of bridge, at river access area where Goose Pond Brook meets the Housatonic River.

PHOTOGRAPH LOG

Housatonic River
2024 Biota Consumption Advisory Sign Maintenance
General Electric Company
Pittsfield, Massachusetts



Site Name:
Tyringham Rd. (Lee)

Site Location:
HR-27

Date Photograph Taken:
July 3, 2024

Comments:
Found sign on sign post, at pull-off area on Tyringham Road, right bank of river. Location was cut out so that sign could be seen.



Site Name:
Meadow St. Bridge (Off of Route 102 in South Lee)

Site Location:
HR-28

Date Photograph Taken:
July 3, 2024

Comments:
Found sign on sign post, left bank of river, upstream of bridge.

PHOTOGRAPH LOG

Housatonic River
2024 Biota Consumption Advisory Sign Maintenance
General Electric Company
Pittsfield, Massachusetts



Site Name:

Meadow St. Bridge (Off of Route 102 in South Lee)

Site Location:

HR-29

Date Photograph Taken:

July 3, 2024

Comments:

Found sign on sign post, left bank of river, downstream of bridge.



Site Name:

Park St. Foot Bridge (Stockbridge)

Site Location:

HR-30

Date Photograph Taken:

July 2, 2024

Comments:

Found sign on telephone pole, near trailhead, upstream of bridge, left bank of river.

PHOTOGRAPH LOG

Housatonic River
2024 Biota Consumption Advisory Sign Maintenance
General Electric Company
Pittsfield, Massachusetts



Site Name:
Route 7 / Park St. Bridge
(Stockbridge)

Site Location:
HR-31

Date Photograph Taken:
July 2, 2024

Comments:
Found sign on sign post, at canoe access area, adjacent to Park St. park, left bank of river, upstream of bridge.



Site Name:
West Main St. Bridge
(Stockbridge)

Site Location:
HR-32

Date Photograph Taken:
July 2, 2024

Comments:
Adjacent to Stockbridge Golf Course. Found sign on sign post, right bank of the river, downstream side of bridge, this location was cut out.

PHOTOGRAPH LOG

Housatonic River
2024 Biota Consumption Advisory Sign Maintenance
General Electric Company
Pittsfield, Massachusetts



Site Name:
Butler Rd. Bridge (Glendale)

Site Location:
HR-33

Date Photograph Taken:
July 2, 2024

Comments:
Found sign on tree, right bank of river, upstream of bridge, bridge is closed to vehicles, footbridge only.



Site Name:
Butler Rd. Bridge (Glendale)

Site Location:
HR-34

Date Photograph Taken:
July 2, 2024

Comments:
Found sign on the ground, left bank of river, upstream of bridge. Reinstalled the same sign on the same tree.

PHOTOGRAPH LOG

Housatonic River
2024 Biota Consumption Advisory Sign Maintenance
General Electric Company
Pittsfield, Massachusetts



Site Name:
Glendale Middle Rd. Bridge
(Glendale)

Site Location:
HR-35

Date Photograph Taken:
July 2, 2024

Comments:
Found sign on sign post, at canoe access area, right bank of river, downstream of bridge, which is now a one lane bridge. Location was cut out so that sign could be seen.



Site Name:
Route 183 (Stockbridge)

Site Location:
HR-36

Date Photograph Taken:
July 2, 2024

Comments:
Found sign on tree, replaced top screw holding sign on tree, across from intersection with Dugway Rd., at pull-off area on Route 183, river access area, left bank of river.

PHOTOGRAPH LOG

Housatonic River
2024 Biota Consumption Advisory Sign Maintenance
General Electric Company
Pittsfield, Massachusetts



Site Name:
Route 183 (Stockbridge)

Site Location:
HR-37

Date Photograph Taken:
July 2, 2024

Comments:
Found sign on tree, at road to former Blue Moon Kennel off of Route 183, at river access area, left bank of river.



Site Name:
Route 183 (Housatonic)

Site Location:
HR-38

Date Photograph Taken:
July 2, 2024

Comments:
Found sign on tree, just north of Rising Pond Dam, upstream of dam, right bank of river/ pond. Location was cut out so that sign could be seen.

PHOTOGRAPH LOG

Housatonic River
2024 Biota Consumption Advisory Sign Maintenance
General Electric Company
Pittsfield, Massachusetts



Site Name:

Division St. Bridge (Great Barrington)

Site Location:

HR-39

Date Photograph Taken:

July 2, 2024

Comments:

Found sign on telephone pole, at USGS gage station and river access area, right bank of river, upstream of bridge (Note: A new temporary bridge has been installed at this location).



Site Name:

Housatonic Flats (Great Barrington)

Site Location:

HR-40

Date Photograph Taken:

July 2, 2024

Comments:

Found sign installed on kiosk at start of Housatonic Flats trail, off of Rt. 7.

PHOTOGRAPH LOG

Housatonic River
2024 Biota Consumption Advisory Sign Maintenance
General Electric Company
Pittsfield, Massachusetts



Site Name:
Bridge St. (Great Barrington)

Site Location:
HR-41

Date Photograph Taken:
July 2, 2024

Comments:
Found sign on sign post, behind old Searles Middle School, at canoe access area, left bank of river, upstream of Bridge St. bridge.



Site Name:
Brookside Rd. (Great Barrington)

Site Location:
HR-42

Date Photograph Taken:
July 2, 2024

Comments:
Found sign on sign post, at canoe access area, left bank of river, upstream of Brookside Rd. bridge, which is closed at the present time. This location was cut out.

PHOTOGRAPH LOG

Housatonic River
2024 Biota Consumption Advisory Sign Maintenance
General Electric Company
Pittsfield, Massachusetts



Site Name:

East Sheffield Rd. (Great Barrington)

Site Location:

HR-43

Date Photograph Taken:

July 2, 2024

Comments:

Found sign on tree, west side of road, right bank of river.



Site Name:

East Sheffield Rd. (Great Barrington)

Site Location:

HR-44

Date Photograph Taken:

July 2, 2024

Comments:

Found sign on tree, at pull-off area on East Sheffield Rd., adjacent to river, west side of road, right bank of river.

PHOTOGRAPH LOG

Housatonic River
2024 Biota Consumption Advisory Sign Maintenance
General Electric Company
Pittsfield, Massachusetts



Site Name:
Boardman Rd. (Sheffield)

Site Location:
HR-45

Date Photograph Taken:
July 2, 2024

Comments:
Found sign on tree, at access road to farmer's field, west side of Boardman Rd., right bank of river, elevation approximate.



Site Name:
Kellogg Rd. Bridge (Sheffield)

Site Location:
HR-46

Date Photograph Taken:
July 2, 2024

Comments:
Found sign on signpost, adjacent to Appalachian Trail, left bank of river, upstream of bridge.

PHOTOGRAPH LOG

Housatonic River
2024 Biota Consumption Advisory Sign Maintenance
General Electric Company
Pittsfield, Massachusetts



Site Name:
Route 7 Rest Area (Sheffield)

Site Location:
HR-47

Date Photograph Taken:
June 21, 2024

Comments:
At mile marker 6.5. Found sign on sign post, left bank of river.



Site Name:
Sheffield Covered Bridge (Sheffield)

Site Location:
HR-48

Date Photograph Taken:
June 21, 2024

Comments:
Found sign on wooden post, at covered bridge parking area and steps down to river, left bank of river, downstream of covered bridge.

PHOTOGRAPH LOG

Housatonic River
2024 Biota Consumption Advisory Sign Maintenance
General Electric Company
Pittsfield, Massachusetts



Site Name:
Route 7 Bridge (Ashley Falls)

Site Location:
HR-49

Date Photograph Taken:
June 21, 2024

Comments:
Found sign on sign post, left bank of river, adjacent to Ashley Falls USGS gaging station, upstream side of bridge.



Site Name:
Route 7A Bridge (Ashley Falls)

Site Location:
HR-50

Date Photograph Taken:
June 21, 2024

Comments:
Found sign on sign post, left bank of river, downstream of bridge. Location was cut out so that sign could be seen.

PHOTOGRAPH LOG

Housatonic River
2024 Biota Consumption Advisory Sign Maintenance
General Electric Company
Pittsfield, Massachusetts



Site Name:

Rannapo Rd. Bridge (Ashley Falls)

Site Location:

HR-51

Date Photograph Taken:

June 21, 2024

Comments:

Found sign on sign post, left bank of river, upstream side of bridge, end of trail off Rannapo Rd. that leads to Housatonic River, adjacent to where Stony Brook meets Housatonic River.



Site Name:

West Branch at South St. Bridge (Pittsfield)

Site Location:

WB-1

Date Photograph Taken:

July 9, 2024

Comments:

Found sign on sign post, downstream side of South St. (Route 7 and 20) bridge, left bank of river.

PHOTOGRAPH LOG

Housatonic River
2024 Biota Consumption Advisory Sign Maintenance
General Electric Company
Pittsfield, Massachusetts



Site Name:

West Branch Upstream of Confluence (Pittsfield)

Site Location:

WB-2

Date Photograph Taken:

July 9, 2024

Comments:

Found sign on tree along walking path adjacent to riverbank, upstream of confluence of East and West Branches of Housatonic River.



Site Name:

West Branch on Dewey Ave. (Pittsfield)

Site Location:

WB-3

Date Photograph Taken:

August 6, 2024

Comments:

Installed new sign on sign post at the top of bank of the West Branch of the Housatonic River, in the Westside Riverway Park on Dewey Ave.

PHOTOGRAPH LOG

Housatonic River
2024 Biota Consumption Advisory Sign Maintenance
General Electric Company
Pittsfield, Massachusetts



Site Name:
Wampenum Brook Confluence
(Pittsfield)

Site Location:
WPB-1

Date Photograph Taken:
July 10, 2024

Comments:
Found sign on sign post where
Wampenum Brook (brook from
Morewood Lake) meets the
Housatonic River.



Site Name:
Sackett Brook at East New
Lenox Rd (Pittsfield)

Site Location:
SA-1

Date Photograph Taken:
July 9, 2024

Comments:
Found sign on sign post where
East New Lenox Rd. crosses
over Sackett Brook, right side of
brook, downstream of bridge.

PHOTOGRAPH LOG

Housatonic River
2024 Biota Consumption Advisory Sign Maintenance
General Electric Company
Pittsfield, Massachusetts



Site Name:
Sackett Brook Confluence
(Pittsfield)

Site Location:
SA-2

Date Photograph Taken:
July 9, 2024

Comments:
Found sign on sign post where
Sackett Brook meets the
Housatonic River.



Site Name:
Sykes Brook Confluence
(Pittsfield)

Site Location:
SY-1

Date Photograph Taken:
July 9, 2024

Comments:
Found sign on sign post where
Sykes Brook meets the
Housatonic River.

PHOTOGRAPH LOG

Housatonic River
2024 Biota Consumption Advisory Sign Maintenance
General Electric Company
Pittsfield, Massachusetts



Site Name:
Upper Mill Brook (Lenox)

Site Location:
UMB-1

Date Photograph Taken:
July 9, 2024

Comments:
Found sign on tree where New Lenox Rd. crosses over Mill Brook, right side of brook, downstream of bridge.



Site Name:
Lower Mill Brook (Lenox)

Site Location:
LMB-1

Date Photograph Taken:
July 9, 2024

Comments:
Found sign on sign post where Roaring Brook Rd. crosses over Mill Brook, right side of brook, downstream of bridge. Location was cut out so that sign could be seen.

PHOTOGRAPH LOG

Housatonic River
2024 Biota Consumption Advisory Sign Maintenance
General Electric Company
Pittsfield, Massachusetts



Site Name:
Roaring Brook (Lenox)

Site Location:
RB-1

Date Photograph Taken:
July 9, 2024

Comments:
Found sign on tree where Roaring Brook Rd. crosses over Roaring Brook, left side of brook, downstream of bridge.



Site Name:
Felton Lake Brook (Lee)

Site Location:
FLB-1

Date Photograph Taken:
July 9, 2024

Comments:
Found sign on tree where Woodland Rd. crosses over Felton Lake Brook, left side of brook, downstream side of bridge.

Appendix B

*Advice for Eating Fish and Waterfowl from the Housatonic River Area
in Massachusetts (in both English and Spanish)*

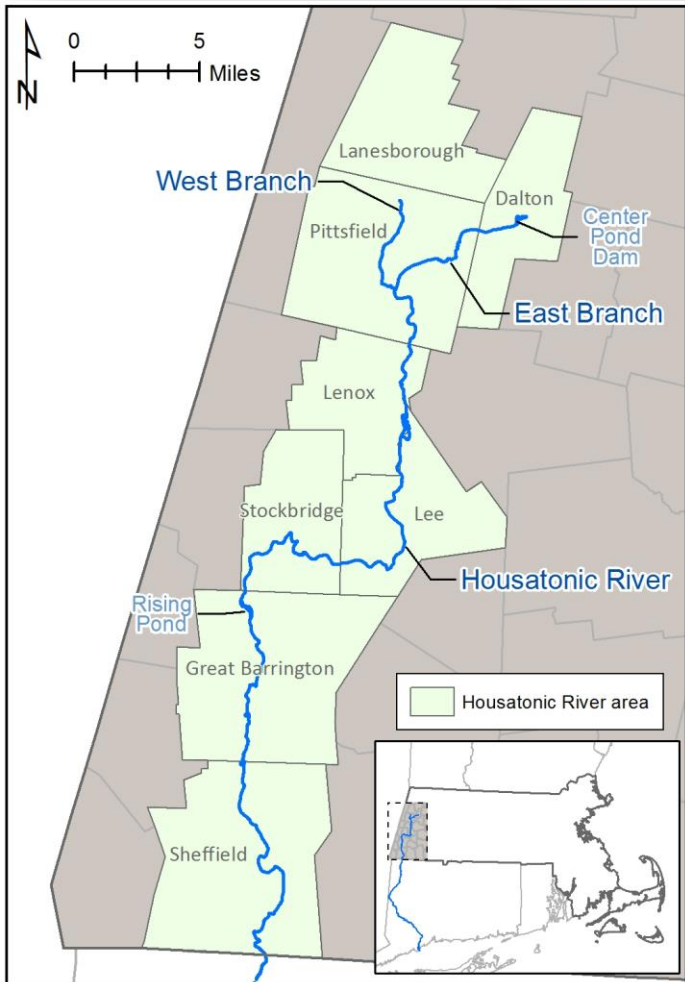
Advice for Eating Fish and Waterfowl from the Housatonic River Area in Massachusetts

MDPH advises that **NO ONE** eat the following from the Housatonic River Area



Do NOT eat: Fish, frogs, and turtles from the Housatonic River and tributaries that feed into the main river from Center Pond Dam in Dalton to the Connecticut border.

Do NOT eat: Mallards and wood ducks from the Housatonic River and its impoundments from Pittsfield south to Rising Pond in Great Barrington.



Information about the Housatonic River area

The Housatonic River area is made up of eight communities in Berkshire County: Lanesborough, Dalton, Pittsfield, Lenox, Stockbridge, Lee, Great Barrington, and Sheffield. There are three main branches of the Housatonic River—the East Branch, West Branch, and Southwest Branch—that combine to make up the main stem of the Housatonic River. The Housatonic River flows south from Pittsfield into Connecticut.

Due to releases of chemicals by the General Electric Company from the early 1930s through the late 1970s, polychlorinated biphenyls (PCBs) are present in soils, sediment, fish, and certain waterfowl in and around the Housatonic River area. PCBs do not break down easily in the environment.

While portions of the Housatonic River area have been cleaned up, PCBs may be present in fish and waterfowl at levels that could be harmful if eaten. For more information on the Housatonic River clean-up, visit www.epa.gov/ge-housatonic.

Effects of PCBs on health

- PCBs are suspected of causing liver problems, skin lesions or irritations, and some types of cancer.
- Children are especially sensitive to PCBs, especially during fetal development, nursing, and early growth. Exposure to small amounts of these chemicals may interfere with brain development even before birth.

Fish and waterfowl in the Housatonic River

Fish and waterfowl in the area may be exposed to PCBs. PCBs are a group of man-made organic chemicals banned in the 1970s. PCBs can still be found in our environment and can get into our food due to their widespread use. PCBs can enter fish's bodies and concentrate in their skin, fat, internal organs and sometimes muscles. Larger species feed on smaller species. This causes PCB concentrations to be higher in larger, older fish. PCBs in sediments are also a concern for other aquatic species (e.g., ducks, frogs, turtles).

How plants and animals are exposed to contaminants

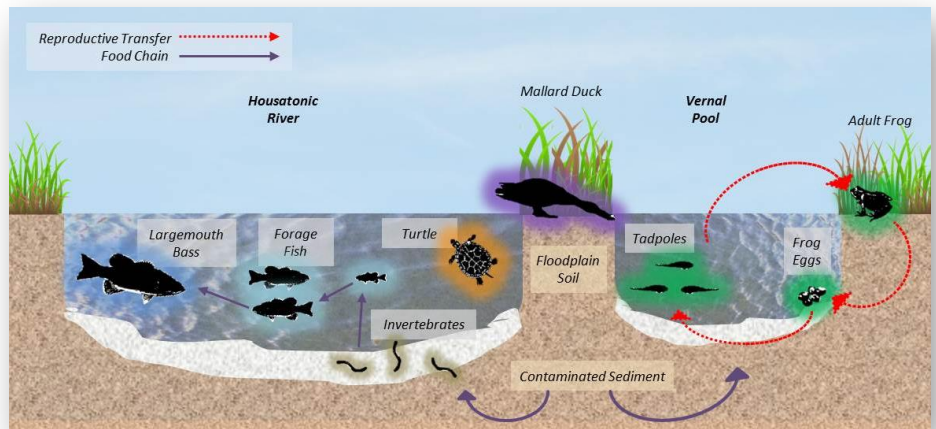


Image adapted from the EPA Housatonic River Ecological Risk Assessment, Fact Sheet: <http://savethehousatonic.org/wp-content/uploads/2008/07/FactERA.pdf>

Tips for fishing in the Housatonic River and its tributaries

- Observe posted warning signs and follow their advice.
- Do not eat fish from the Housatonic River and its tributaries.
- When fishing, release fish unharmed back into the river.
- Follow the State-wide Fish Consumption Advisory for other lakes, rivers, and ponds in the Housatonic River area in Massachusetts. More specific consumption advice is available for certain bodies of water that have been tested at www.mass.gov/dph/fishadvisories.



General State-wide Advice for eating fish caught in Massachusetts

The following is advised for pregnant women, women who may become pregnant, nursing mothers, and children under 12 years old:

- **Do Not Eat:** Freshwater fish caught in streams, rivers, lakes, and ponds in Massachusetts
- **Safe to Eat:** Fish that are stocked in streams, rivers, lakes, and ponds in Massachusetts



General State-wide Advice for eating waterfowl caught in Massachusetts

Safe Guidelines for Eating Wild Waterfowl from areas *other* than the Housatonic River area:

- Skin and remove all fat before cooking
- Discard stuffing after cooking
- Drippings should not be used for gravy
- Eat waterfowl in moderation (no more than 2 meals per month)



For more information

- To choose fish and waterfowl that are safe to eat, please contact the MDPH Bureau of Environmental Health at 617-624-5757 or 800-240-4266: www.mass.gov/dph/environmental_health
- To learn more about stocked fish, please contact the MassWildlife Western District office, Dalton. Tel: (413) 684-1646 or visit www.mass.gov/trout. For fishing regulations visit www.masswildlife.com.
- To learn more about the federal government's additional advice for safe fish consumption, please visit www.fda.gov/fishadvice and www.epa.gov/fishadvice.

Fish is good for you!

Continue to eat a variety of fish from safe sources. Fish is low in saturated fat, high in protein, and helps to prevent heart disease.

Bureau of Environmental Health
MA Department of Public Health

250 Washington Street, 7th Floor, Boston, MA 02108
Phone: 617-624-5757 | Fax: 617-624-5777 | TTY: 617-624-5286
www.mass.gov/dph/fishadvisories

Revised September 2019



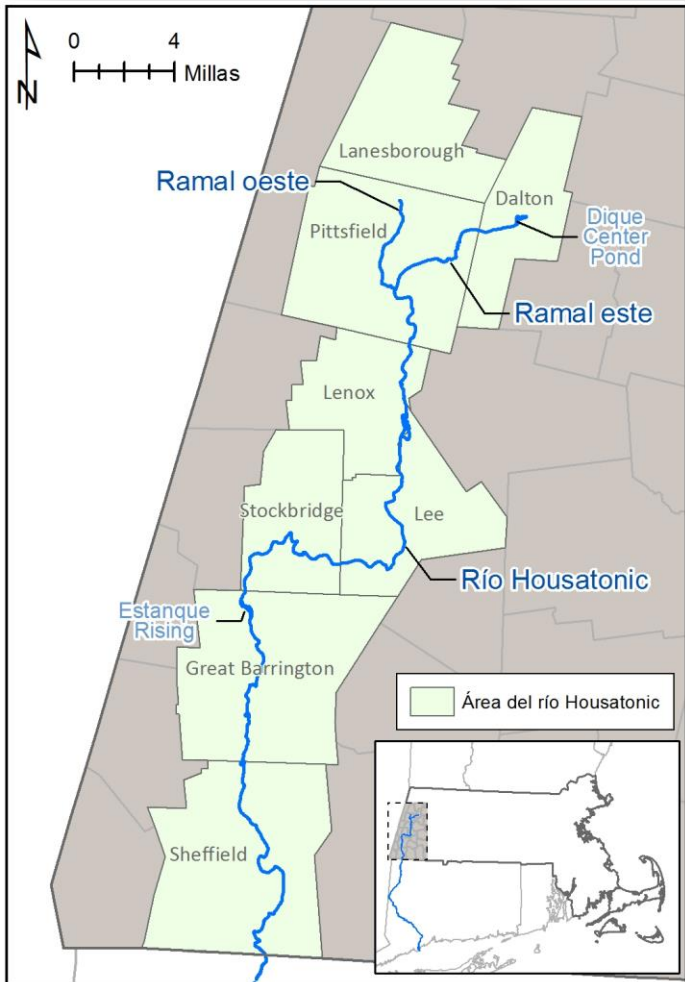
Consejos para el consumo de pescado y aves acuáticas del área del río Housatonic en Massachusetts

El Departamento de Salud Pública de Massachusetts (MDPH) aconseja que **NADIE** consuma lo siguiente del área del río Housatonic



NO consumir: peces, ranas y tortugas del río Housatonic y sus afluentes que desembocan en el río principal desde el dique Center Pond en Dalton hasta la frontera de Connecticut.

NO consumir: ánades reales y patos joyuyos del río Housatonic y sus embalses desde Pittsfield sur hasta Estanque Rising en Great Barrington.



Información sobre el área del río Housatonic

El área del río Housatonic está compuesta por ocho comunidades en el condado de Berkshire: Lanesborough, Dalton, Pittsfield, Lenox, Stockbridge, Lee, Great Barrington y Sheffield. El río Housatonic tiene tres ramales principales: el ramal este, el ramal oeste y el ramal suroeste, que se combinan para formar el curso principal del río Housatonic. El río Housatonic fluye hacia el sur desde Pittsfield hasta Connecticut.

Debido a las emisiones de sustancias químicas por parte de General Electric Company desde principios de los 30 hasta finales de los 70, existe la presencia de bifenilos policlorados (PCB) en suelos, sedimentos, peces y determinadas aves acuáticas dentro y alrededor del área del río Housatonic. Los PCB no se descomponen fácilmente en el medioambiente.

Si bien se han limpiado algunas partes del área del río Housatonic, los PCB pueden estar presentes en peces y aves acuáticas en niveles que podrían ser perjudiciales en caso de consumo. Para obtener más información sobre la limpieza del río Housatonic, ingrese en www.epa.gov/ge-housatonic.

Efectos de los PCB en la salud

- Se sospecha que los PCB causan problemas hepáticos, lesiones o irritación en la piel, y algunos tipos de cáncer.
- Los niños son particularmente sensibles a los PCB, especialmente durante el desarrollo fetal, la lactancia y la primera etapa del crecimiento. La exposición a pequeñas cantidades de estas sustancias químicas puede afectar el desarrollo cerebral, incluso antes del nacimiento.

Peces y aves acuáticas en el río Housatonic

Los peces y las aves acuáticas de la zona pueden estar expuestos a PCB. Los PCB son un grupo de sustancias químicas orgánicas sintéticas prohibidas en los 70. Todavía se pueden encontrar en nuestro medioambiente y pueden introducirse en nuestros alimentos debido a su uso generalizado. Los PCB pueden introducirse en el cuerpo de los peces y concentrarse en la piel, la grasa, los órganos internos y, en ocasiones, en los músculos. Las especies más grandes se alimentan de especies más pequeñas. Esto hace que las concentraciones de PCB sean mayores en los peces más grandes y más viejos. Los PCB presentes en sedimentos también representan una inquietud para otras especies acuáticas (p. ej.: patos, ranas, tortugas).

Cómo las plantas y los animales están expuestos a los contaminantes

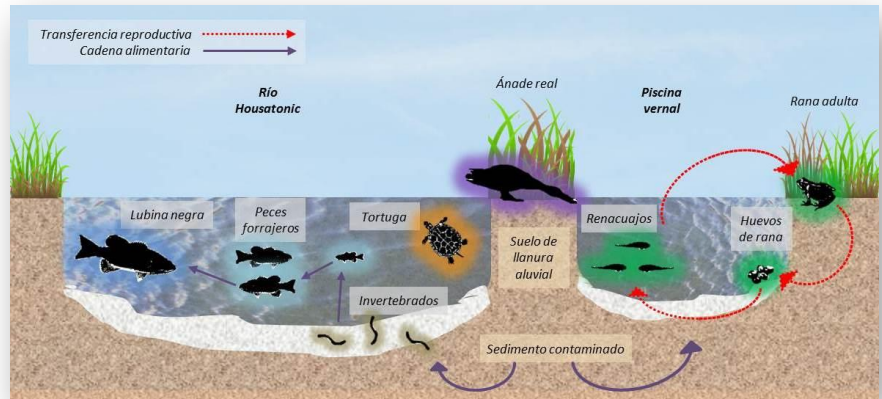


Imagen adaptada de la *Evaluación de riesgos ecológicos del río Housatonic* de la Agencia de Protección Ambiental de Estados Unidos (EPA), Hoja informativa: <http://savethehousatonic.org/wp-content/uploads/2008/07/FactERA.pdf>

Consejos para pescar en el río Housatonic y sus afluentes

- Observe las señales de advertencia y siga sus consejos.
- No coma pescado del río Housatonic y sus afluentes.
- Al pescar, libere a los peces ilesos en el río.
- Siga las Recomendaciones para el consumo de pescado en todo el estado para otros lagos, ríos y estanques del área del río Housatonic en Massachusetts. Existen consejos más específicos sobre el consumo para determinadas masas de agua que se han probado en www.mass.gov/dph/fishadvisories.

Consejos generales para todo el estado para el consumo de peces capturados en Massachusetts

La siguiente es una recomendación para mujeres embarazadas, mujeres que puedan quedar embarazadas, madres lactantes y niños menores de 12 años:

- **No consumir:** peces de agua dulce capturados en arroyos, ríos, lagos y estanques de Massachusetts
- **Seguro para el consumo:** peces de arroyos, ríos, lagos y estanques de Massachusetts

Consejos generales para todo el estado para el consumo de aves acuáticas capturadas en Massachusetts

Pautas de seguridad para el consumo de aves acuáticas salvajes procedentes de áreas diferentes al área del río Housatonic:

- Despellejar y quitar toda la grasa antes de cocinar.
- Desechar el relleno después de cocinar.
- Los goteos de grasa no deben utilizarse para preparar salsas.
- Consumir las aves acuáticas con moderación (no más de 2 comidas por mes).

Para obtener más información

- Para elegir pescados y aves acuáticas cuyo consumo sea seguro, póngase en contacto con la Oficina de Salud Ambiental del MDPH llamando al 617-624-5757 o 800-240-4266: www.mass.gov/dph/environmental_health
- Para obtener más información sobre las poblaciones de peces, póngase en contacto con la oficina del Distrito Oeste de Vida Silvestre de Massachusetts, en Dalton. Tel.: (413) 684-1646 o ingrese en www.mass.gov/trout. Para conocer las regulaciones de pesca, ingrese en www.masswildlife.com.
- Para obtener más información sobre los consejos adicionales del gobierno federal para el consumo seguro de pescado, ingrese en www.fda.gov/fishadvice y www.epa.gov/fishadvice.

¡El pescado es bueno para usted!

Siga comiendo una variedad de pescados de fuentes seguras. El pescado tiene bajo contenido de grasas saturadas, alto contenido de proteínas, y ayuda a evitar enfermedades cardíacas.