



Kevin Mooney
Senior Project Manager
Global Operations - Environment, Health & Safety

General Electric Company
1 Plastics Ave.
Pittsfield, MA 01201

T (413) 553-6610
kevin.mooney@ge.com

Via Electronic Mail

February 29, 2024

Mr. Joshua Fontaine
U.S. Environmental Protection Agency, New England Region
Five Post Office Square
Suite 100
Boston, MA 02109

**Re: GE-Pittsfield/Housatonic River Site
Rest of River (GEC850)
2023 Annual Report on Biota Consumption Advisory Outreach Activities for Housatonic Rest of
River in Connecticut**

Dear Mr. Fontaine:

Attached for the General Electric Company (GE) is a report entitled *2023 Annual Report on Biota Consumption Advisory Outreach Activities: Housatonic Rest of River – Connecticut*, prepared for GE by Arcadis. This report is submitted in accordance with GE's revised *Biota Consumption Advisory Outreach Plan for Housatonic Rest of River – Connecticut*, submitted by GE on January 20, 2022 and approved by EPA on January 26, 2022. This report describes the outreach activities conducted on GE's behalf in 2023, including the inspection and replacement of biota consumption advisory signs along the Connecticut portion of the Rest of River, as well as the provision of the Connecticut Department of Public Health pamphlet describing the consumption advisory to fishing license sales agents in the Connecticut towns and counties through which the Housatonic River flows. The report also describes the biota consumption advisory outreach activities planned for 2024 and future years for the Housatonic River in Connecticut in accordance with the approved plan.

Please let me know if you have any questions about this annual report.

Very truly yours,

Kevin G. Mooney
Senior Project Manager – Environmental Remediation

Attachment

Cc: (via electronic mail)

Dean Tagliaferro, EPA
Anni Loughlin, EPA
Tim Conway, EPA
John Kilborn, EPA
Christopher Ferry, ASRC Federal
Thomas Czelusniak, HDR Inc.
Scott Campbell, Taconic Ridge Environmental
Izabella Zapisek, Taconic Ridge Environmental
Traci Iott, CT DEEP
Susan Peterson, CT DEEP
Graham Stevens, CT DEEP
Lori DiBella, CT AG
Michael Gorski, MassDEP
John Ziegler, MassDEP
Ben Guidi, MassDEP
Michelle Craddock, MassDEP
Jeffrey Mickelson, MassDEP
Mark Tisa, MassDFW
Eve Schluter, MassDFW
Betsy Harper, MA AG
Molly Sperduto, USFWS
Mark Barash, US DOI
Diane Evers, NOAA
Melissa Provencher, BRPC
James McGrath, City of Pittsfield
Andrew Cambi, City of Pittsfield
Christopher Ketchen, Town of Lenox
R. Christopher Brittain, Town of Lee
Town Manager, Great Barrington
Town Administrator, Stockbridge
Town Administrator, Sheffield
Andrew Silber, GE
Andrew Thomas, GE
James Bieke, Sidley Austin
Adam Ayers & David Knutsen, Arcadis
Public Information Repository at David M. Hunt Library in Falls Village, CT
GE Internal Repository

General Electric Company

**2023 Annual Report on Biota
Consumption Advisory
Outreach Activities:
Housatonic Rest of River -
Connecticut**

February 2024

2023 Annual Report on Biota Consumption Advisory Outreach Activities: Housatonic Rest of River - Connecticut

February 2024

Prepared By:

Arcadis U.S., Inc.
One Lincoln Center, 110 West Fayette Street, Suite 300
Syracuse
New York 13202
Phone: 315 446 9120
Fax: 315 449 0017

Prepared For:

General Electric Company

Our Ref:

30175995

Contents

1	Introduction.....	1
2	Inspection and Maintenance of Advisory Signs.....	3
3	Provision of Biota Consumption Advisory Pamphlets	4
4	Future Activities.....	5
4.1	Provision and Maintenance of Fish Consumption Advisory Signs.....	5
4.2	Provision of Fish Consumption Advisory Pamphlets.....	6
4.3	Other Activities	7
4.4	Reporting	7
5	Schedule	8
6	References	9

Tables

Table 1	Summary of Biota Consumption Advisory Sign Locations Along the Housatonic River – Connecticut
Table 2	Fishing License Agents Provided Consumption Advisory Pamphlet

Figures

Figure 1	Locations of Consumption Advisory Signs Along the Connecticut Portion of the Housatonic River from Canaan South to Cornwall Bridge
Figure 2	Locations of Consumption Advisory Signs Along the Connecticut Portion of the Housatonic River from Cornwall Bridge South to New Milford
Figure 3	Locations of Consumption Advisory Signs Along the Connecticut Portion of the Housatonic River from New Milford South to Lake Zoar
Figure 4	Locations of Consumption Advisory Signs Along the Connecticut Portion of the Housatonic River from Lake Zoar South to Shelton

Attachments

- Attachment A** **Connecticut Fish Consumption Advisory Signs**
- Attachment B** **2023 Consumption Advisory Sign Photographic Log**
- Attachment C** **2022 Connecticut Fish Consumption Advisory Pamphlet**
- Attachment D** **2023 Connecticut Fish Consumption Advisory Pamphlet**

1 Introduction

The State of Connecticut has a general state-wide consumption advisory for eating fish from Connecticut waters, and it also has specific fish consumption advisories for specific waterbodies in Connecticut, including the Housatonic River. These advisories, developed by the Connecticut Department of Public Health (CT DPH) in conjunction with the Connecticut Department of Energy and Environmental Protection (CT DEEP), are based on the presence of polychlorinated biphenyls (PCBs), mercury, and/or other chemicals in the fish. The current fish consumption advisories for the Housatonic River in Connecticut apply to the consumption of certain fish species from certain portions of the River due to the presence or potential presence of PCBs in the fish. These advisories range from “Do not eat” to warnings to limit consumption to only “one meal per month” or “one meal per week,” depending on the species, area of the River, and the type of individual (i.e., “high-risk group,” consisting of pregnant women, women who could become pregnant, nursing women, and children under the age of six, or “low-risk group,” consisting of all others). In addition, the state-wide advisory warns against consumption of most freshwater fish throughout the State more than once a month or once a week due to the presence of mercury.

In November 2017, the General Electric Company (GE) submitted to the U.S. Environmental Protection Agency (EPA) a Biota Consumption Advisory Outreach Plan for the Housatonic River in Connecticut, which presented GE’s plan for supporting EPA and the State of Connecticut in improving public awareness of the CT DPH’s fish consumption advisories for the Housatonic River. That plan was submitted in accordance with the requirements of Section II.B.6.a of a Modified Resource Conservation and Recovery Act (RCRA) Permit issued to GE by EPA on October 24, 2016, pursuant to the 2000 Consent Decree for the GE-Pittsfield/Housatonic River Site, relating to the portion of the Housatonic River downstream of the confluence of the East and West Branches of the River in Pittsfield, including in Connecticut (referred to as the “Rest of River”).

Following an appeal of that permit to the EPA Environmental Appeals Board and remand by that Board, EPA revised the permit and issued a Revised Modified Permit on December 16, 2020. The requirements relating to GE’s cooperation with and support of EPA and the States of Massachusetts and Connecticut regarding biota consumption advisories are now located in Section II.B.7.a of the Revised Modified Permit, but are otherwise unchanged from those in the 2016 Permit. That section requires GE to “cooperate with and support EPA and the States to improve public awareness of the advisories by conducting the following: preparing, distributing, inspecting, monitoring, and maintaining educational and outreach activities, including the producing and posting of signs [in appropriate languages]; providing to hunting and fishing license distributors appropriate written notices regarding such advisories to be included with licenses; and performing all other related activities.”

On June 28, 2021, EPA issued a conditional approval letter for GE’s November 2017 Biota Consumption Advisory Outreach Plan for Connecticut and required GE to revise that plan. In accordance with that letter, GE revised the plan and submitted the revised plan to EPA on August

2023 Annual Report on Biota Consumption Advisory Outreach Activities
Housatonic Rest of River - Connecticut

9, 2021. On December 21, 2021, EPA issued a conditional approval letter for the revised plan and required GE to provide further revisions to that plan. In accordance with that letter, GE revised the plan again and submitted the revised Biota Consumption Advisory Outreach Plan for Connecticut on January 20, 2022 (Arcadis 2022a). EPA approved that revised plan on January 26, 2022.

The final outreach plan noted that GE would submit, by the end of February 2022, an annual report describing the outreach activities conducted on GE's behalf in the fall of 2021 prior to submission of the final plan (notably, the survey of then-current biota consumption advisory signs), and thereafter submit such annual reports by the end of February in the year following the subject year. GE's performance of the activities described in the Outreach Plan in 2021 were documented in the *2021 Annual Report on Biota Consumption Advisory Outreach Activities in Connecticut*, dated February 28, 2022 (Arcadis 2022b), which was conditionally approved by EPA by letter dated May 10, 2022. Biota consumption advisory outreach activities undertaken by GE in 2022 were similar to those conducted in 2021 and were documented in the *2022 Annual Report on Biota Consumption Advisory Outreach Activities in Connecticut*, dated February 28, 2023 (Arcadis 2023), which was conditionally approved by EPA by letter dated July 5, 2023.

This report describes biota consumption advisory outreach activities performed by Arcadis on GE's behalf in 2023. Section 2 of this report describes the inspection and replacement of signs in 2023. Section 3 describes the provision of written notices regarding biota consumption advisories in Connecticut in 2023. Section 4 describes future outreach activities, including inspection and replacement of advisory signs, as well as provision of biota consumption advisory pamphlets and submission of annual reports on those activities. Section 5 provides a schedule for those future activities.

2 Inspection and Maintenance of Advisory Signs

During June 2023, GE conducted a survey of the current biota consumption advisory signs along the Housatonic River and its tributaries, at the locations listed in Table 1, to determine whether the signs that were placed at public access points were still present. Copies of the current signs, which were prepared in English, Spanish, and four Asian languages (Vietnamese, Cambodian, Lao, and Hmong) and may be replaced in the future by revised signs using wording developed by the State of Connecticut (“the State”), are shown in Attachment A.¹ During the 2023 survey, GE replaced signs that were missing, vandalized, or deemed illegible. That survey is described further below.

During the period of June 20 through 30, 2023, Arcadis, on behalf of GE, performed the survey and replacement of the signs. Signs were inspected and replaced as necessary at previously posted locations, and photo documentation was obtained.

Table 1 lists the locations of all consumption advisory signs installed along the Rest of River in Connecticut, as well as their most recent installation date (when known), their locational coordinates, and comments showing the results of the 2023 inspection for each of those signs, including maintenance activities performed. The locations of the consumption advisory signs are depicted on Figures 1 through 4. On those figures, the “small” signs are those in English and Spanish and the “large” signs are those in the four Asian languages. A sign photographic log is provided in Attachment B. Locational information is being maintained in a Geographic Information System (GIS) geospatial database and locational map, developed to assist with regular inspections and replacement of signs.

¹ In its June 28 and December 21, 2021 conditional approval letters, EPA indicated that, after consultation with the State of Connecticut, it would advise GE of any desired revisions to the format and wording of these signs, including translations of the signs into appropriate non-English languages. No such changes were provided to GE in 2023, and thus there were no changes to the signs shown in Attachment A. See also Section 4.2 below.

3 Provision of Biota Consumption Advisory Pamphlets

On May 26, 2023, Arcadis, on behalf of GE, distributed copies of the 2022 Connecticut fish consumption advisory pamphlet, entitled “If I Catch It, Can I Eat It?”, and an appropriate cover letter to fishing license sales agents in the Connecticut towns and counties through which the Housatonic River flows. The pamphlet was provided in both English and Spanish. Copies of the pamphlet provided (in both English and Spanish) are included in Attachment C.²

The entities that were provided biota consumption advisory pamphlets and cover letters in hard copy format are listed in Table 2. This list of fishing license agents was previously included in the approved plan and was developed by reviewing CT DEEP’s list of town clerks and outdoor equipment retailers that sell fishing licenses (available at https://portal.ct.gov/-/media/DEEP/fishing/general_information/TownClerkRetailAgentspdf.pdf), plotting the locations of all those entities in a Geographic Information System (GIS), and then including on the list in Table 2 the Town Clerk offices located within the Connecticut towns through which the Housatonic River flows and other retailers located within the counties of Litchfield, Fairfield, and New Haven.

In its cover letters to all fishing license agents, GE requested the license agents distribute the pamphlet to all persons obtaining a fishing license. In addition, in all cover letters, GE committed to provide the recipients with a reasonable number of additional pamphlets if requested. No additional pamphlets were requested in 2023.

² In its June 28 and December 21, 2021 conditional approval letters, EPA indicated that it was in consultation with the State of Connecticut regarding translation of this pamphlet into additional languages and would provide any such translations to GE. No such additional translations were provided in 2023.

4 Future Activities

This section describes the future biota consumption outreach activities that GE will conduct in the Connecticut portion of the Rest of River. This description is taken largely from Biota Consumption Advisory Outreach Plan submitted on January 20, 2022 and approved by EPA.

4.1 Provision and Maintenance of Fish Consumption Advisory Signs

As noted above, EPA previously advised GE, in its June 28 and December 21, 2021 conditional approval letters, that, after consultation with the State, EPA will advise GE of any desired revisions to the format and wording of the advisory signs, and that this will include a translation into the non-English languages in which the signs are to be written. On December 22, 2022, EPA advised GE that it was continuing that consultation. After EPA has provided this information to GE, GE will provide a mock-up of the revised signs in the designated languages to EPA for final approval.

After EPA has approved the new format and wording of the signs, GE will post additional fish consumption advisory signs, using the new format, wording, and languages, along the Housatonic River and two affected tributaries subject to the CT DPH advisory – i.e., the Blackberry River below Blast Furnace in North Canaan and Furnace Brook in Cornwall. In addition, GE will provide and post a limited number of these fish consumption advisory signs on other tributaries of the Housatonic River that have been specified by EPA (namely, Hollenbeck River, Tenmile River, Salmon Creek, Still River, Pomperaug River, Pootatuck River, and Naugatuck River) at locations identified by EPA after consultation with the State. Further, if requested by the State, GE will provide additional such signs to the State. At the State's discretion, the additional signs will be posted and monitored by the State at additional locations outside the Housatonic River and the tributaries listed above. Additionally, GE will update and maintain the GIS geospatial database and locational map of all sign locations to assist with subsequent inspections and replacement of signage. The database and locational map will be shared with EPA and the State upon request.

On an annual basis, GE will conduct an inspection of the currently posted signs or, if revised signs have been posted in the meantime, of the posted revised signs, depending on the timing of the posting of such revised signs. During this annual inspection, if signs are missing, vandalized, or deemed illegible or if additional likely public access points are identified, GE will produce replacement or additional signs and post them at the appropriate locations. GE will also ensure that the signs remain visible to the public and will provide maintenance through removal of obscuring vegetation and/or overgrowth.

Further, if, at any time, EPA, CT DEEP, or CT DPH identifies additional locations where the posting of a replacement or additional sign is warranted or any changes to the format, wording, or languages of the signs, EPA will specify such additional locations or changes and GE will provide the requested sign(s), or make the specified changes, and post it/them at the appropriate location(s). In the event

that EPA advises GE that revisions to the signs are necessary, it will specify the desired revisions to the format and wording of the signs and will provide translations into the desired languages, and GE will again provide a mock-up of the revised signs to EPA for final approval before the signs are fabricated and installed.

If site conditions and/or CT DPH advisories change, GE will consult with EPA, CT DEEP, and CT DPH regarding updates to the biota advisory signs.

4.2 Provision of Fish Consumption Advisory Pamphlets

On an annual basis, continuing in 2024, GE will provide fishing license sales agents in the Connecticut towns and counties through which the Housatonic River flows with copies of the then-current Connecticut fish consumption advisory fact sheet/pamphlet and an appropriate cover letter. The pamphlet will be provided in both English and Spanish. In 2024, it will be the 2023 pamphlet included in Attachment D, entitled “If I Catch It, Can I Eat It?”, which also can be found in English at <https://portal.ct.gov/-/media/DPH/EHDW/IfICatchIt-2023-Final-English-December-8-2023.pdf>, and in Spanish at <https://portal.ct.gov/-/media/DPH/EHDW/If-I-Catch-It-Can-I-Eat-It-Spanish-December-8-2023-Final.pdf>, or a 2024 version if available. As noted above, EPA previously advised GE in its June 28 and December 21, 2021 conditional approval letters that it was in discussion with the State regarding the translation of the biota consumption advisory pamphlets into various additional languages, and that EPA will provide any such additional translations to GE for distribution once available. In December 2022, EPA advised GE that it was continuing that consultation.

In 2024, GE is planning to provide the most recent version of biota consumption advisory pamphlet in the appropriate languages, together with the cover letter, to the fishing license agents listed in Table 2. GE is providing this list to EPA for an annual review. If EPA advises GE of any changes to this list, GE will revise the list accordingly. Further, if, at any time, EPA, CT DEEP, or CT DPH identifies additional recipients for the advisory pamphlets, or any changes to the format, wording, or languages of the pamphlets, EPA will specify such additional recipients or changes to the pamphlets (including translations into the desired languages), and GE will provide such additional pamphlets or make such changes.

In its cover letters to all fishing license agents, GE will request the license agents to distribute the pamphlet to all persons obtaining a fishing license. In addition, in all cover letters, GE will commit to provide the recipients with a reasonable number of additional pamphlets in either English or Spanish if requested (or in other languages if EPA provides GE with translations of the pamphlets into those languages).

As with the consumption advisory signs, if site conditions and/or CT DPH advisories change, GE will consult with EPA, CT DEEP, and CT DPH regarding updates to the biota consumption advisory pamphlets.

4.3 Other Activities

In addition to the activities described above, GE will support other, related educational and outreach activities undertaken by EPA or the State to publicize the CT DPH's biota consumption advisory for the Housatonic River. Such activities may include, but are not limited to, providing information or technical assistance to EPA, CT DEEP, and/or CT DPH, as requested, for their development of public service announcements on their websites or for their holding of public meetings to publicize the biota consumption advisory, and if requested, use of QR codes on the advisory signs or in the informational pamphlets linking the public to additional information on CT DPH's website.

If site conditions and/or CT DPH advisories change, GE will consult with EPA, CT DEEP, and CT DPH regarding updates to any such outreach and educational activity materials to include current information. Further, since the manner of support and information dissemination may change over time, GE will discuss with EPA, CT DEEP, and CT DPH other changes or additions to the outreach program that are suggested by any of those agencies, and if agreed upon by EPA, CT DEEP and CT DPH and if consistent with the requirements of Section II.B.7.a of the Revised Modified Permit, GE will make such changes or additions to this revised outreach plan. Any changes proposed to this outreach plan by GE will be submitted to EPA for approval in the annual report described in Section 4.4 below.

4.4 Reporting

Continuing in 2024 and subsequent years, GE will prepare and submit to EPA an annual report summarizing the biota consumption advisory activities conducted during the prior year. The annual report will summarize the activities conducted for the biota consumption advisory signs and implementation of other outreach and educational activities (if any) during the prior year. That report will also identify the entities to which copies of the consumption advisory informational pamphlets were distributed during the prior year. The report will include figures and tables to document the locations of the signs and identify locations where signs were installed or replaced if missing or illegible. The most recent posting date, when known, will be included to help monitor the age of the signs. In addition, the report will describe the outreach activities to be conducted in the upcoming year, including any proposed changes to, or additional activities proposed for, the outreach program.

5 Schedule

In accordance with the approved Biota Consumption Advisory Outreach Plan for Connecticut, GE will conduct sign installation, inspection, maintenance, and replacement activities on an annual basis. Those activities will include the following: (1) If and when EPA advises GE of any desired revisions to the format, wording, and languages of the signs and approves the revised signs, GE will thereafter post those revised signs as described in the second paragraph of Section 4.1; and (2) in other years (before or after such posting), GE will conduct annual inspections of the posted signs and perform maintenance, replacement, and/or additional sign installation activities as necessary. Additionally, upon request by EPA or the State, GE will provide and post consumption advisory signs at specific location(s) along the River or its tributaries.

In addition, GE will provide copies of the current biota consumption advisory pamphlet to the fishing license agents listed in Table 2 (with any revisions identified by EPA) and ask them to distribute the pamphlets to all persons obtaining a fishing license. GE will subsequently repeat this activity on an annual basis, likely in the spring.

GE will submit the annual report on biota consumption advisory activities conducted in 2024 by February 28, 2025, and will thereafter submit such annual reports, as described in Section 4.4, by the end of February in the year following the subject year.

GE will continue to perform the biota consumption advisory outreach activities described in this revised plan until such time as the advisories are discontinued or this program is modified with EPA approval.

6 References

Arcadis (Arcadis U.S., Inc.). 2022a. Biota Consumption Advisory Outreach Plan for Housatonic Rest of River – Connecticut. Prepared for General Electric Company. Revised January 2022.

Arcadis. 2022b. 2021 Annual Report on Biota Consumption Advisory Outreach Activities – Housatonic Rest of River - Connecticut. Prepared for General Electric Company. February 2022.

Arcadis. 2023. 2022 Annual Report on Biota Consumption Advisory Outreach Activities: Housatonic Rest of River - Connecticut. Prepared for General Electric Company. February 2023.

Tables

Table 1
Summary of Consumption Advisory Sign Locations and Maintenance Activities
Biota Consumption Advisory Outreach Annual Report
Housatonic Rest of River - Connecticut

Location Description	Location ID	Reach/ Tributary	Translations at Location	Most Recent Sign Installation Date	Coordinates ¹		Comments
					North	West	
Near old bridge abutments	1	10	English, Spanish	English - N/A Spanish - N/A	42.0313736	73.3498315	Found both English and Spanish signs past old bridge abutments on large tree off Weatogue Rd in Salisbury, CT
Fire dept. pull off	2	10	English, Spanish	English - N/A Spanish - N/A	42.0259341	73.3531601	Found both English and Spanish signs next to fire department water hookup on Weatogue Rd in Salisbury, CT. Location was cut out so that signs could be seen
At Rte 44 bridge	3	Blackberry River	English, Spanish	English - 11/03/2021 Spanish - 11/03/2021	42.0240141	73.3409852	Found both English and Spanish signs on telephone pole next to bridge off Church St./Rt. 44 in North Canaan, CT.
At Rte 7 bridge	4	Blackberry River	English, Spanish	English - 11/03/2021 Spanish - 11/03/2021	42.0219583	73.3252832	Found both English and Spanish signs on telephone pole adjacent to bridge at corner of Rt. 7 and Lower Rd. in North Canaan, CT. Location was cut out so that signs could be seen
At lower road bridge	5	Blackberry River	English, Spanish	English - 11/03/2021 Spanish - 11/03/2021	42.0108126	73.3044297	Found both English and Spanish signs on telephone pole off southeast corner of bridge on Lower Rd. in North Canaan, CT
At blast furnace historic site	6	Blackberry River	English, Spanish	English - 11/03/2021 Spanish - 11/03/2021	42.0109047	73.2924547	Found both English and Spanish signs on tree near Blackberry River at Beckley Iron Furnace State Park. Park just before bridge and walk to bottom of falls in North Canaan, CT
Great falls upper parking	7	10	English, Spanish	English - 06/30/2023 Spanish - 06/30/2023	41.9639168	73.3718792	Replaced both English and Spanish signs on large tree at end of Great Falls View Parking Lot off Housatonic River Rd., in Salisbury, CT
Lower great falls parking	8	11	English, Spanish	English - N/A Spanish - N/A	41.9611463	73.3737373	Found English and Spanish signs on large tree at Lower Great Falls Pull-Off on Housatonic River Rd., in Salisbury, CT
Telephone pole east side of bridge	9	11	English, Spanish	English - N/A Spanish - N/A	41.9585392	73.3704315	Found English and Spanish signs on telephone pole near northeast corner of Falls River Bridge off Water St. in Falls Village, CT
Pull off above bridge	10	11	English, Spanish	English - 11/03/2021 Spanish - 06/30/2023	41.9581134	73.3712154	Found English sign on tree at pull-off at Falls Mountain Rd. and Dugway Rd. in Salisbury, CT. Replaced Spanish sign on same tree
Canoe access kiosk	11	11	English, Spanish	English - 11/03/2021 Spanish - N/A	41.9571674	73.3701217	Found both English and Spanish signs on Falls Village Canoe access kiosk off Dugway Rd. in Salisbury, CT
D.S. canoe access pull off	12	11	English, Spanish	English - 06/30/2023 Spanish - 11/03/2021	41.9484564	73.3678123	Found Spanish sign on large tree adjacent to pull-off on Dugway Rd. in Salisbury, CT. Replaced English sign on same tree
Posts along corn field	13	11	English, Spanish	English - N/A Spanish - 11/03/2021	41.9342068	73.3623084	Found both English and Spanish signs on large post near southwest corner of bridge on Rt. 7 in Salisbury, CT
At kiosk DS RT 7, 112 bridge	14	11	English, Spanish	English - N/A Spanish - 11/03/2021	41.9327070	73.3627912	Found both English and Spanish signs on post of Appalachian Trail marker (southbound) at pull-off off on Rt. 7 in Salisbury, CT
Pull off above reed brook	15	11	English, Spanish	English - 11/03/2021 Spanish - 11/03/2021	41.9175494	73.3592061	Found both English and Spanish signs. Located on tree at start of footpath adjacent to pull-off on River Road in Cornwall, CT. Location was cut out so that signs could be seen
Tree below RR crossing	16	11	English, Spanish	English - N/A Spanish - N/A	41.9131778	73.3607880	Found both English and Spanish signs on tree near river adjacent to pull-off near railroad crossing on River Rd. in Cornwall, CT. Location was cut out so that signs could be seen

Table 1
Summary of Consumption Advisory Sign Locations and Maintenance Activities
Biota Consumption Advisory Outreach Annual Report
Housatonic Rest of River - Connecticut



Location Description	Location ID	Reach/ Tributary	Translations at Location	Most Recent Sign Installation Date	Coordinates ¹		Comments
					North	West	
Tree across from Indian Weir- River Road Cornwall	17	11	English, Spanish	English - N/A Spanish - 05/04/2022	41.9036288	73.3594080	Found both English and Spanish signs on large tree overhanging river, adjacent to pull-off near railroad crossing on River Rd. in Cornwall, CT
Pull off east side of trail	18	11	English, Spanish	English - N/A Spanish - 11/03/2021	41.8960232	73.3584685	Found both English and Spanish signs on tree adjacent to small pull-off on River Rd. in Cornwall, CT
Large pull off along river	19	11	English, Spanish	English - 06/30/2023 Spanish - N/A	41.8889382	73.3573078	Found Spanish sign on tree adjacent to large pull-off on River Rd. in Cornwall, CT. Replaced English sign on same tree. Location was cut out so that signs could be seen
Small pull off along river	20	11	English, Spanish	English - 06/30/2023 Spanish - 11/03/2021	41.8859590	73.3595716	Found Spanish sign on large tree adjacent to pull-off on River Rd. in Cornwall, CT. Replaced English sign on same tree. Location was cut out so that signs could be seen
2nd pull along field	21	11	English, Spanish	English - N/A Spanish - N/A	41.8831788	73.3629210	Found English and Spanish signs on tree adjacent to second pull-off near field on River Rd. in Cornwall, CT. Location was cut out so that signs could be seen
Small pull off along field	22	11	English, Spanish	English - N/A Spanish - 11/03/2021	41.8809689	73.3641551	Found both English and Spanish signs on post at first pull-off on River Rd. in Cornwall, CT
Elms North Parking	23	11	English, Spanish	English - N/A Spanish - N/A	41.8804337	73.3659381	Found both English and Spanish signs on post at end of parking loop off Rt. 7 in Sharon, CT. Location was cut out so that signs could be seen
Mill River bridge	24	11	English, Spanish	English - N/A Spanish - 11/02/2021	41.8716745	73.3632858	Found both English and Spanish signs on telephone pole at corner of Lower River Rd. and West Cornwall covered bridge in West Cornwall, CT
Garbage pool	25	11	English, Spanish	English - N/A Spanish - 11/02/2021	41.8692857	73.3631486	Found both English and Spanish signs on tree at "The Bend" canoe access launch off Lower River Rd. in West Cornwall, CT. Location was cut out so that signs could be seen
Pull off above fly section	26	11	English, Spanish	English - N/A Spanish - 06/29/2023	41.8690233	73.3676631	Found English sign on tree adjacent to pull-off on Rt. 7 just northeast of Pine Swamp Brook in Sharon, CT. Replaced Spanish sign on same tree. Location was cut out so that signs could be seen
Pull Off US Pine Swamp Brook	27	11	English, Spanish	English - N/A Spanish - N/A	41.8667338	73.3697553	Found both English and Spanish signs on tree at Rt. 7 pull-off just after Pine Swamp Brook, adjacent to pull-off on non-river side of road, in Sharon, CT. Location was cut out so that signs could be seen
Pine Swamp Brook	28	11	English, Spanish	English - N/A Spanish - N/A	41.8665103	73.3695169	Found English and Spanish signs on tree across from Rt. 7 one car pull-off just after Pine Swamp Brook in Sharon, CT. Location was cut out so that signs could be seen
Trinity pull off	29(1)	11	English, Spanish	English - N/A Spanish - 11/02/2021	41.8635108	73.3702407	Found both English and Spanish signs on large pine tree adjacent to Trinity Riverside Trailhead at end of Lower River Rd. in Cornwall, CT
Trinity pull off	29(2)	11	English, Spanish	English - N/A Spanish - N/A	41.8650819	73.3706404	Found English and Spanish signs on tree near river, along Rt. 7 in Sharon, CT
In front of Clarkes	30	11	English, Spanish	English - N/A Spanish - 11/02/2021	41.8624019	73.3733347	Found both English and Spanish signs on tree across Rt. 7 from Clarke Outdoors building in Sharon, CT
Border of TMA fly section	31	11	English, Spanish	English - N/A Spanish - N/A	41.8587375	73.3749403	Found English and Spanish signs across from Rt. 7 pull-off at start of Trout Management Area on tree in Sharon, CT

Table 1
Summary of Consumption Advisory Sign Locations and Maintenance Activities
Biota Consumption Advisory Outreach Annual Report
Housatonic Rest of River - Connecticut



Location Description	Location ID	Reach/ Tributary	Translations at Location	Most Recent Sign Installation Date	Coordinates ¹		Comments
					North	West	
First pull off after Carse Brook	32(1)	11	English, Spanish	English – N/A Spanish – N/A	41.8546226	73.3761258	Found both Spanish and English signs on tree before Carse Brook at Rt. 7 pull-off in Sharon, CT
First pull off after Carse Brook	32(2)	11	English, Spanish	English – N/A Spanish – N/A	41.8558266	73.3756300	Found both Spanish and English signs on tree just after Carse Brook at Rt. 7 pull-off in Sharon, CT
Cellar hole	33	11	English, Spanish	English – N/A Spanish – N/A	41.8510599	73.3760175	Found English and Spanish signs on tree at Cellar Hole boat launch pull-off on Rt. 7 in Sharon, CT
Pull off below cellar hole	34	11	English, Spanish	English - N/A Spanish - 11/02/2021	41.8463806	73.3754449	Found both English and Spanish signs on tree at Rt. 7 pull-off with "No Swimming No Picnicking" sign in Sharon, CT
End of campsites at meadows	35	11	English, Spanish	English - 11/02/2021 Spanish - 11/02/2021	41.8418393	73.3767129	Found both English and Spanish signs on tree at end of road, down path about 100 ft in Housatonic Meadows State Campground (take left at entry - all the way to end at trail) in Sharon, CT. Location was cut out so that signs could be seen
Housatonic meadows campground	36(1)	11	English, Spanish	English - N/A Spanish - N/A	41.8396575	73.3780520	Found Spanish and English signs on tree before cabins at Housatonic Meadows State Campground (take a left at entry) in Sharon, CT
Housatonic meadows campground	36(2)	11	English, Spanish	English - N/A Spanish - N/A	41.8412251	73.3768500	Found Spanish and English signs on tree at end of road past cabins at Housatonic Meadows State Campground (take a left at entry - just after cabins before end of road) in Sharon, CT
In front of pine knob loop	37	11	English, Spanish	English - N/A Spanish - 11/02/2021	41.8330233	73.3832334	Found both English and Spanish signs on tree across Rt. 7 from Pine Knob Loop Trailhead Parking in Sharon, CT
Dual pull off below pine knob	38(1)	11	English, Spanish	English - N/A Spanish - N/A	41.8308085	73.3845745	Found English and Spanish signs on telephone pole adjacent to Rt. 7 pull-off just before Pine Knob Loop Trail in Sharon, CT
Dual pull off below pine knob	38(2)	11	English, Spanish	English - N/A Spanish - N/A	41.8314613	73.3845121	Found English and Spanish signs on telephone pole just north of Rt. 7 pull-off before Pine Knob Loop Trail in Sharon, CT
Dual pull off below pine knob	38(3)	11	English, Spanish	English - 11/02/2021 Spanish - 11/02/2021	41.8321875	73.3843401	Found English and Spanish signs on tree just south of Pine Knob Loop Trail on west side of Rt. 7 in Sharon, CT. Location was cut out so that signs could be seen
Second pull off upstream housatonic meadows	39	11	English, Spanish	English - 06/29/2023 Spanish - 06/29/2023	41.8279812	73.3822218	Replaced both English and Spanish signs on tree at pull-off on Rt. 7 in Sharon, CT
At roadside pull-off with picnic table	40	Furnace Brook	English, Spanish	English - 11/02/2021 Spanish - 11/02/2021	41.8238621	73.3578895	Found both English and Spanish signs on tree adjacent to pull-off w/ picnic tables on Furnace Brook Rd. in Cornwall, CT
First pull off upstream housatonic meadows	41	11	English, Spanish	English - N/A Spanish - N/A	41.8260165	73.3798139	Found both English and Spanish signs on large pine tree at pull-off on Rt. 7, just north of Housatonic Meadows State Park in Sharon, CT
Housatonic meadows parking	42	11	English, Spanish	English - 07/22/2022 Spanish - 07/22/2022	41.82473	73.37812	Found both English and Spanish signs attached to board and sign post at parking area in Housatonic Meadows State Park off Rt. 7 in Sharon, CT

Table 1
Summary of Consumption Advisory Sign Locations and Maintenance Activities
Biota Consumption Advisory Outreach Annual Report
Housatonic Rest of River - Connecticut

Location Description	Location ID	Reach/ Tributary	Translations at Location	Most Recent Sign Installation Date	Coordinates ¹		Comments
					North	West	
Housatonic meadows water entry	43	11	English, Spanish	English - 07/22/2022 Spanish - 07/22/2022	41.82452	73.37668	Found both English and Spanish signs on tree just south of Housatonic Meadows State Park parking area, off Rt. 7 in Sharon, CT
Boat launch housatonic meadows	44	11	English, Spanish	English - N/A Spanish - N/A	41.8239131	73.3733779	Found both English and Spanish signs on post near boat launch in Housatonic Meadows State Park off Rt. 7 in Sharon, CT
Commercial boat launch	45	11	English, Spanish	English - N/A Spanish - N/A	41.8231883	73.3725780	Found both English and Spanish signs on tree at commercial boat launch in Housatonic Meadows State Park at end of road off Rt. 7 in Sharon, CT. Location was cut out so that signs could be seen
At bridge just above confluence with Housatonic River	46(1&2)	11	English, Spanish	English - 11/01/2021 Spanish - N/A	41.8213871	73.3712023	Found 2 sets of English and Spanish signs on telephone pole just past Furnace Brook confluence at parking area off Popple Swamp Rd. in Cornwall Bridge, CT
At bridge just above confluence with Housatonic River	46(3)	11	English, Spanish	English - 06/28/2023 Spanish - 11/01/2021	41.8219437	73.3711222	Found Spanish sign on large pine tree at start of Lower River Rd., next to railroad tracks in Cornwall Bridge, CT. Replaced English sign on same tree
Furnace Brook confluence	47	11/Furnace Brook	English, Spanish	English - 11/01/2021 Spanish - N/A	41.8210340	73.3713518	Found both English and Spanish signs on telephone pole by Furnace Brook confluence bridge off Popple Swamp Rd. in Cornwall Bridge, CT
Underneath Cornwall bridge	48	11	English, Spanish	English - 11/01/2021 Spanish - 11/01/2021	41.8199800	73.3732500	Found both English and Spanish signs at Francis L. Sheane Fly Fishing Area pull-off on River Rd, under Rt. 7 bridge in Sharon, CT
Above Rte 4 bridge	49	Furnace Brook	English, Spanish	English - N/A Spanish - N/A	41.8186086	73.3682244	Found both English and Spanish signs on tree at Furnace Brook Memorial pull-off on Rt. 4 just east of Cornwall Bridge, CT
End of River Rd trail head	50	12	English, Spanish	English - N/A Spanish - N/A	41.8077504	73.3916629	Found both English and Spanish signs on tree at pull-off on River Rd., close to Appalachian Trail gate in Sharon, CT
Gunn Brook Pull off	51	12	English, Spanish	English - N/A Spanish - N/A	41.8050184	73.3872976	Found both English and Spanish signs on tree at end of Swifts Bridge Rd. off Rt. 7 in Cornwall Bridge, CT
Across from Kent Falls	52	12	English, Spanish	English - 11/01/2021 Spanish - 11/01/2021	41.7765666	73.4191636	Found both English and Spanish signs on tree across the railroad tracks and to the southwest of Kent Falls State Park off Rt. 7 in Kent, CT. Location was cut out so that signs could be seen
Footpath Kiosk End of River Rd	53	12	English, Spanish	English - N/A Spanish - N/A	41.7679466	73.4381184	Found both English and Spanish signs on Appalachian Trail kiosk at end of River Rd. in Kent, CT
North Kent Pool	54	12	English, Spanish	English - N/A Spanish - N/A	41.7668043	73.4380071	Found both English and Spanish signs on Housatonic River Wildlife Management Area kiosk at end of N Kent No 2 Rd. in Kent, CT
Footpath near culvert past gate	55	12	English, Spanish	English - 10/29/2021 Spanish - 10/29/2021	41.7614319	73.4471906	Found both English and Spanish signs on tree adjacent to footpath past Appalachian Trail gate on River Rd. in Kent, CT
Hiker pull off River Rd	56	12	English, Spanish	English - N/A Spanish - 10/29/2021	41.7580355	73.4502239	Found both English and Spanish signs on tree adjacent to Appalachian Trail parking area on River Rd. in Kent, CT. Signs were cut out to be seen
Long pull off River Rd	57	12	English, Spanish	English - N/A Spanish - N/A	41.7510705	73.4574571	Found English and Spanish signs on large tree adjacent to pull-off on River Rd. in Kent, CT

Table 1
Summary of Consumption Advisory Sign Locations and Maintenance Activities
Biota Consumption Advisory Outreach Annual Report
Housatonic Rest of River - Connecticut

Location Description	Location ID	Reach/ Tributary	Translations at Location	Most Recent Sign Installation Date	Coordinates ¹		Comments
					North	West	
2 car pull off above island	58	12	English, Spanish	English - 10/29/2021 Spanish - 10/29/2021	41.7507338	73.4595865	Found both English and Spanish signs adjacent to 2 car pull-off on River Rd., on downstream end of two large islands in the Housatonic River, on large tree in Kent, CT
Island pull off near brook	59	12	English, Spanish	English - N/A Spanish - 10/29/2021	41.7501105	73.4599965	Found both English and Spanish signs on tree adjacent to island pull-off on River Rd. in Kent, CT. Location is near small brook
John Rodgers memorial	60	12	English, Spanish	English - N/A Spanish - 10/29/2021	41.7454448	73.4646448	Found both English and Spanish signs on tree next to river adjacent to pull-off on River Rd. John Rodgers Memorial in Kent, CT
First pull off on River Rd	61	12	English, Spanish	English - N/A Spanish - 10/29/2021	41.7409782	73.4701715	Found both English and Spanish signs on tree adjacent to pull-off on River Rd. in Kent, CT
Large pull off before River Rd	62	12	English, Spanish	English - N/A Spanish - N/A	41.7388249	73.4723139	Found English and Spanish signs on a telephone pole adjacent to pull-off on Skiff Mountain Rd. in Kent, CT
Large log pull off	63	12	English, Spanish	English - N/A Spanish - 10/29/2021	41.7364885	73.4739591	Found both English and Spanish signs on dead tree adjacent to pull-off on Skiff Mountain Rd. in Kent, CT
341 bridge street bridge	64	12	English, Spanish	English - N/A Spanish - 10/29/2021	41.7268615	73.4815584	Found both English and Spanish signs on tree under west side of Macedonia Rd. (Rt 341) bridge in Kent, CT. Park near trail off Skiff Mountain Rd. and walk under bridge. Location was cut out so that signs could be seen
Pull off above Bulls Bridge	65	12	English, Spanish	English - N/A Spanish - 10/29/2021	41.6894114	73.5044216	Found both English and Spanish signs on tree adjacent to pull-off on Rt. 7 north of Bulls Bridge in Kent, CT. Location was cut out so that signs could be seen
Large pull off Schaghticoke Rd	66	12	English, Spanish	English - 10/28/2021 Spanish - 10/28/2021	41.6842323	73.5084392	Found both English and Spanish signs on large tree adjacent to barricaded pull-off off Schaghticoke Rd. in Kent, CT
Above Bulls Bridge kiosk	67	13	English, Spanish	English - 10/28/2021 Spanish - N/A	41.6719967	73.5110570	Found both English and Spanish signs on tree past information kiosk off Bulls Bridge Rd. on west side of Housatonic River in Kent, CT
Bulls Bridge Kiosk	68	13	English, Spanish	English - N/A Spanish - N/A	41.6758218	73.5097454	Found English and Spanish signs at kiosk off Bulls Bridge Rd., just past covered bridge on west side of Housatonic River in Kent, CT
Bulls Bridge pool	69	13	English, Spanish	English - N/A Spanish - 10/28/2021	41.6730508	73.5092244	Found both English and Spanish signs on tree near river. Park at Bulls Bridge and walk south down Appalachian Trail ~1,000 ft, Kent, CT
Ten Mile River bridge	70	13/Tenmile River	English, Spanish	English - N/A Spanish - 10/28/2021	41.6660701	73.5069456	Found both English and Spanish signs on tree adjacent to Ten Mile River bridge. Park at Bulls Bridge and walk south on Appalachian Trail/Homestead Trail ~1 mile in Kent, CT
10 Mile River Campsites	71	13	English, Spanish	English - N/A Spanish - 10/28/2021	41.6651396	73.5072450	Found both English and Spanish signs on tree near Housatonic River at 10 Mile River Campsites. Park at Bulls Bridge and walk south on Appalachian Trail/Homestead Trail over Ten Mile River bridge, in Sherman, CT
Gunns Eddy lot	72	13	English, Spanish	English - 06/27/2023 Spanish - 10/28/2021	41.6628543	73.4955364	Found Spanish sign on post to left of gate at Gunns Eddy lot off Rt. 7 in New Milford, CT. Replaced English sign on same post
First light power plant	73	13	English, Spanish	English - N/A Spanish - 10/28/2021	41.6584438	73.4921542	Found both English and Spanish signs on tree near river adjacent to First Light Power access off Rt. 7 in New Milford, CT

Table 1
Summary of Consumption Advisory Sign Locations and Maintenance Activities
Biota Consumption Advisory Outreach Annual Report
Housatonic Rest of River - Connecticut

Location Description	Location ID	Reach/ Tributary	Translations at Location	Most Recent Sign Installation Date	Coordinates ¹		Comments
					North	West	
Pull off above Gaylordsville bridge	74	13	English, Spanish	English - N/A Spanish - 06/27/2023	41.6515331	73.4881225	Found English sign on tree adjacent to barricaded pull-off on Rt. 7 in New Milford, CT. Replaced Spanish sign on same tree
Gaylordsville bridge	75	13	English, Spanish	English - N/A Spanish - 10/29/2021	41.6464521	73.4831815	Found both English and Spanish signs on tree near bottom of parking lot on southeast corner of Gaylordsville Bridge, at the end of a short trail, in Gaylordsville, CT
Bend of the Road pull off Rt 37	76	13	English, Spanish	English - N/A Spanish - 10/28/2021	41.6319932	73.4714837	Found both English and Spanish signs on tree adjacent to small pull-off on Rt. 7, New Milford, CT. Signs sit back off Rt. 7 and were cut out to be seen
Second pull off on River Rd New Milford	77	13	English, Spanish	English - 10/27/2021 Spanish - 10/27/2021	41.6325540	73.4709614	Found both English and Spanish signs on tree adjacent to seventh pull-off on River Rd. (coming from Boardman Rd.) in New Milford, CT
Third pull off River Rd New Milford	78	13	English, Spanish	English - N/A Spanish - 10/27/2021	41.6302085	73.4669438	Found both English and Spanish signs on tree at sixth pull-off on River Rd. (coming from Boardman Rd.) in New Milford, CT
Fourth pull off River Rd New Milford	79	13	English, Spanish	English - N/A Spanish - 10/27/2021	41.6230617	73.4616846	Found both English and Spanish signs on tree at fifth pull-off on River Rd. (coming from Boardman Rd.) in New Milford, CT
Pulloff on RT 37 after Straight-away	80	13	English, Spanish	English - N/A Spanish - 10/28/2021	41.6218468	73.4629815	Found both English and Spanish signs on large tree about 100 yards to the northeast of new small pull-off on Rt. 7, New Milford, CT. Signs sit back off Rt. 7 and were cut out to be seen
Sixth pull off River Rd New Milford	81	13	English, Spanish	English - 10/27/2021 Spanish - 10/27/2021	41.6161775	73.4534978	Found both English and Spanish signs at fourth pull-off on River Rd. (coming from Boardman Rd.), on tree adjacent to parking area, New Milford, CT. Cut back vines that were growing over signs
Pull off on Rt 37 US Private Rd	82	13	English, Spanish	English - N/A Spanish - 10/28/2021	41.6147693	73.4530801	Found both English and Spanish signs on tree adjacent to pull-off on Rt. 7, near Kennedy Ct, New Milford, CT
Beach pull off	83	13	English, Spanish	English - N/A Spanish - N/A	41.6143337	73.4496432	Found English and Spanish signs on tree at third pull-off on River Rd. (coming from Boardman Rd.), New Milford, CT
Eighth pull off River Rd New Milford	84	13	English, Spanish	English - N/A Spanish - 10/27/2021	41.6110867	73.4485441	Found both English and Spanish signs on tree at second pull-off on River Rd. (coming from Boardman Rd.), New Milford, CT
Nineth pull off River Rd New Milford	85	13	English, Spanish	English - N/A Spanish - 10/27/2021	41.6088386	73.4493458	Found both English and Spanish signs on large tree at first pull-off on River Rd., New Milford, CT. Cut back vines that were growing over signs
Bleachry Dam	86	13	English, Spanish	English - N/A Spanish - 10/27/2021	41.5654719	73.4127115	Found both English and Spanish signs on large tree to the right of gate on path leading down to Bleachry Dam. Trail starts at back of parking lot for Orthodontics office, New Milford, CT
West Cove Marina	87	14	English, Spanish	English - N/A Spanish - N/A	41.5646529	73.4078342	Found English and Spanish signs on telephone pole next to boat launch at West Cove Marina. Drive to end of West St. and around back of building to launch, New Milford, CT
Town Park	88	14	English, Spanish	English - N/A Spanish - N/A	41.5552755	73.4065729	Found English and Spanish signs on wood post at Addis Park boat launch off Lower Grove St. in New Milford, CT

Table 1
Summary of Consumption Advisory Sign Locations and Maintenance Activities
Biota Consumption Advisory Outreach Annual Report
Housatonic Rest of River - Connecticut

Location Description	Location ID	Reach/ Tributary	Translations at Location	Most Recent Sign Installation Date	Coordinates ¹		Comments
					North	West	
Lillinonah State Boat Launch	89	14	English, Spanish	English - N/A Spanish - N/A	41.4802646	73.3489269	Found English, Spanish, and Vietnamese, Cambodian, Lao, Hmong signs at kiosk next to Bridgewater/ Lake Lillinonah Public Boat Launch in Bridgewater, CT
Lillinonah State Boat Launch	90	14	Vietnamese, Cambodian, Lao, Hmong	N/A	41.4802646	73.3489269	
Lillinonah Woods	91	14	English, Spanish	English - N/A Spanish - 10/26/2021	41.4754540	73.3506881	Found both English and Spanish signs on kiosk at Lillinonah Woods Park off Obtuse Hill Rd., in Brookfield, CT
Lillinonah Lake Boat Launch-Hanover Street	92	14	English, Spanish	English - N/A Spanish - 10/26/2021	41.4712329	73.3323964	Found English, Spanish, and Vietnamese, Cambodian, Lao, Hmong signs at kiosk next to Lake Lillinonah Town Park boat launch in Newtown, CT
Lillinonah Lake Boat Launch-Hanover Street	93	14	Vietnamese, Cambodian, Lao, Hmong	10/26/2021	41.4712329	73.3323964	
George C Waldo State Park Area	94	14	English, Spanish	English - 06/23/2023 Spanish - 06/23/2023	41.4639192	73.2867392	Replaced both English and Spanish signs on tree to left of access gate in George C Waldo State Park in Southbury, CT
Pond Brook Confluence with Housatonic	95	14	English, Spanish	English - N/A Spanish - N/A	41.4596519	73.3248980	Found English and Spanish signs on kiosk next to Town of Newtown Park & Boat Ramp in Newtown, CT
Below Shepaug River Dam	96	15	English, Spanish	English - N/A Spanish - 10/26/2021	41.4500145	73.2905771	Found English, Spanish, and Vietnamese, Cambodian, Lao, Hmong signs on large pine tree in the Housatonic River Project Recreation area, just downstream of Shepaug Dam in Southbury, CT
Below Shepaug River Dam	97	15	Vietnamese, Cambodian, Lao, Hmong	10/26/2021	41.4500145	73.2905771	
Upper Paugusett Trails	98	14	English, Spanish	English - N/A Spanish - 10/26/2021	41.4497604	73.3069349	Found both English and Spanish signs on kiosk at end of Echo Valley Rd. - The Sugarbush at Upper Paugusett in Newtown, CT
River Road- Sandy Hook	99	15	English, Spanish	English - N/A Spanish - 10/26/2021	41.4448574	73.2670531	Found both English and Spanish signs on tree on River Rd. pull-off in Southbury, CT. Removed vines that were covering signs
Newtown Forest Trails	100	14	English, Spanish	English - N/A Spanish - 10/27/2021	41.4442831	73.3043922	Found both English and Spanish signs on tree across Alberts Hill Rd. from parking area for Newtown Forest Association in Newtown, CT
Confluence of the Pootatuck and Housatonic	101	15/Pootatuck River	English, Spanish	English - N/A Spanish - 10/27/2021	41.4398828	73.2687372	Found both English and Spanish signs on large tree at back of parking lot off Bridge End Farm Ln. in park, Sandy Hook, CT. Cut and removed small trees that were covering the signs
Pomperaug River Confluence Area	102	15/Pomeraug River	English, Spanish	English - 06/23/2023 Spanish - 06/23/2023	41.4389171	73.2511896	Replaced both English and Spanish signs on large tree at bottom of path off River Rd. in Southbury, CT. Park across River Rd. and walk down past gate. Also removed vine that was interfering with signs
Lake Zoar Boat Launch	103	15	Vietnamese, Cambodian, Lao, Hmong	06/23/2023	41.4278173	73.2362265	Found English and Spanish signs on kiosk at Lake Zoar Public Boat Launch in Southbury, CT. Replaced Vietnamese, Cambodian, Lao, Hmong sign on same kiosk
Lake Zoar Boat Launch	104	15	English, Spanish	English - N/A Spanish - N/A	41.4278173	73.2362265	

Table 1
Summary of Consumption Advisory Sign Locations and Maintenance Activities
Biota Consumption Advisory Outreach Annual Report
Housatonic Rest of River - Connecticut

Location Description	Location ID	Reach/ Tributary	Translations at Location	Most Recent Sign Installation Date	Coordinates ¹		Comments
					North	West	
Kettletown State Park	105	15	English, Spanish	English - N/A Spanish - 10/26/2021	41.424611	73.207332	Found English, Spanish, and Vietnamese, Cambodian, Lao, Hmong signs on kiosk, in Kettletown State Park, adjacent to cove of Lake Zoar, off Georges Hill Rd., Southbury, CT
Kettletown State Park	106	15	Vietnamese, Cambodian, Lao, Hmong	10/13/2021	41.424611	73.207332	
Jackson Cove Park	107	15	English, Spanish	English - N/A Spanish - 10/26/2021	41.411503	73.190221	Found English and Spanish signs on telephone pole adjacent to Jackson Cove boat launch, at Jackson Cove Park, Jackson Cove Rd, Oxford, CT. Replaced Vietnamese, Cambodian, Lao, Hmong sign on same pole
Jackson Cove Park	108	15	Vietnamese, Cambodian, Lao, Hmong	06/20/2023	41.411503	73.190221	
Paugusett State Forest Zoar Trail	109	15	English, Spanish	English - N/A Spanish - 10/27/2021	41.402352	73.187485	Found both English and Spanish signs on kiosk, at Paugusett State Forest Zoar Trailhead at far end of Great Quarter Rd., Sandy Hook, CT
Marina Halfway River	110	15	English, Spanish	English - N/A Spanish - 10/27/2021	41.389921	73.186828	Found both English and Spanish signs on attendant's shed at Eichlers Cove Marina, Old Bridge Rd., Sandy Hook, CT
Coppermine Rd Pulloff	111	15	English, Spanish	English - 10/12/2021 Spanish - 10/26/2021	41.385190	73.172136	Found English and Spanish signs on tree adjacent to Coppermine Rd. pull-off near Stevenson Dam, Oxford, CT. Replaced Vietnamese, Cambodian, Lao, Hmong sign on same tree
Coppermine Rd Pulloff	112	15	Vietnamese, Cambodian, Lao, Hmong	06/20/2023	41.385190	73.172136	
Roosevelt Dr First Light Pull-off	113	16	English, Spanish	English - 06/20/2023 Spanish - 06/20/2023	41.384197	73.165411	Replaced English, Spanish, and Vietnamese, Cambodian, Lao, Hmong signs on tree along trail from First Light Power pull-off area to Housatonic River, Roosevelt Dr. (Rt. 34), Oxford, CT
Roosevelt Dr First Light Pull-off	114	16	Vietnamese, Cambodian, Lao, Hmong	06/20/2023	41.384197	73.165411	
Stevenson Dam Recreational area	115	16	English, Spanish	English - N/A Spanish - 10/27/2021	41.382474	73.168963	Found English, Spanish, and Vietnamese, Cambodian, Lao, Hmong signs on kiosk at Housatonic River Project Recreational Area, adjacent to Stevenson Dam off of Rt. 34, downstream side of Dam, Monroe, CT
Stevenson Dam Recreational area	116	16	Vietnamese, Cambodian, Lao, Hmong	05/02/2022	41.382474	73.168963	
Indian Wells Boat Launch	117	16	English, Spanish	English - N/A Spanish - N/A	41.340743	73.124218	Found English, Spanish, and Vietnamese, Cambodian, Lao, Hmong signs on kiosk at Indian Well State Park boat launch, Rt. 454, Shelton CT
Indian Wells Boat Launch	118	16	Vietnamese, Cambodian, Lao, Hmong	N/A	41.340743	73.124218	
Across from Osbornedale State Park	119	16	English, Spanish	English - 10/12/2021 Spanish - 10/26/2021	41.338741	73.117091	Found English, Spanish, and Vietnamese, Cambodian, Lao, Hmong signs on telephone pole off of Rt. 34, adjacent to Pink House Cove Ice Fishing Area, on Housatonic River, Derby, CT. Removed vines that were growing on telephone pole and covering signs
Pink House Cove	120	16	Vietnamese, Cambodian, Lao, Hmong	05/02/2022	41.338741	73.117091	

Table 1
Summary of Consumption Advisory Sign Locations and Maintenance Activities
Biota Consumption Advisory Outreach Annual Report
Housatonic Rest of River - Connecticut

Location Description	Location ID	Reach/ Tributary	Translations at Location	Most Recent Sign Installation Date	Coordinates ¹		Comments
					North	West	
Maples Boat Launch	121	16	English, Spanish	English - N/A Spanish - 10/25/2021	41.338111	73.121916	Found both English and Spanish signs on wood post at Maples Boat Launch in Shelton, CT. On The Maples Rd., off Indian Well Road, off Rt. 110
Riverside Park	122	17	English, Spanish	English - 10/25/2021 Spanish - 10/25/2021	41.3236115	73.1007545	Found both English and Spanish signs on railing post at top of steps to river edge, just downstream of Derby Dam, Shelton, CT
Derby Dam Area	123	16	English, Spanish	English - N/A Spanish - 10/25/2021	41.325955	73.100433	Found English, Spanish, and Vietnamese, Cambodian, Lao, Hmong signs on kiosk for Derby Dam in Derby, CT
Derby Dam Area	124	16	Vietnamese, Cambodian, Lao, Hmong	10/11/2021	41.325955	73.100433	
Hawkins Point	125	17	English, Spanish	English - N/A Spanish - N/A	41.315168	73.085269	Found both signs on telephone pole at O' Sullivan's Island Recreation Park and the Derby Greenway, Derby CT

Notes:

¹ Units of Coordinates are in degrees, as measured with global positioning system-based Maps application.

N/A - Not Available, installation date prior to fall 2021

Reach Designations:

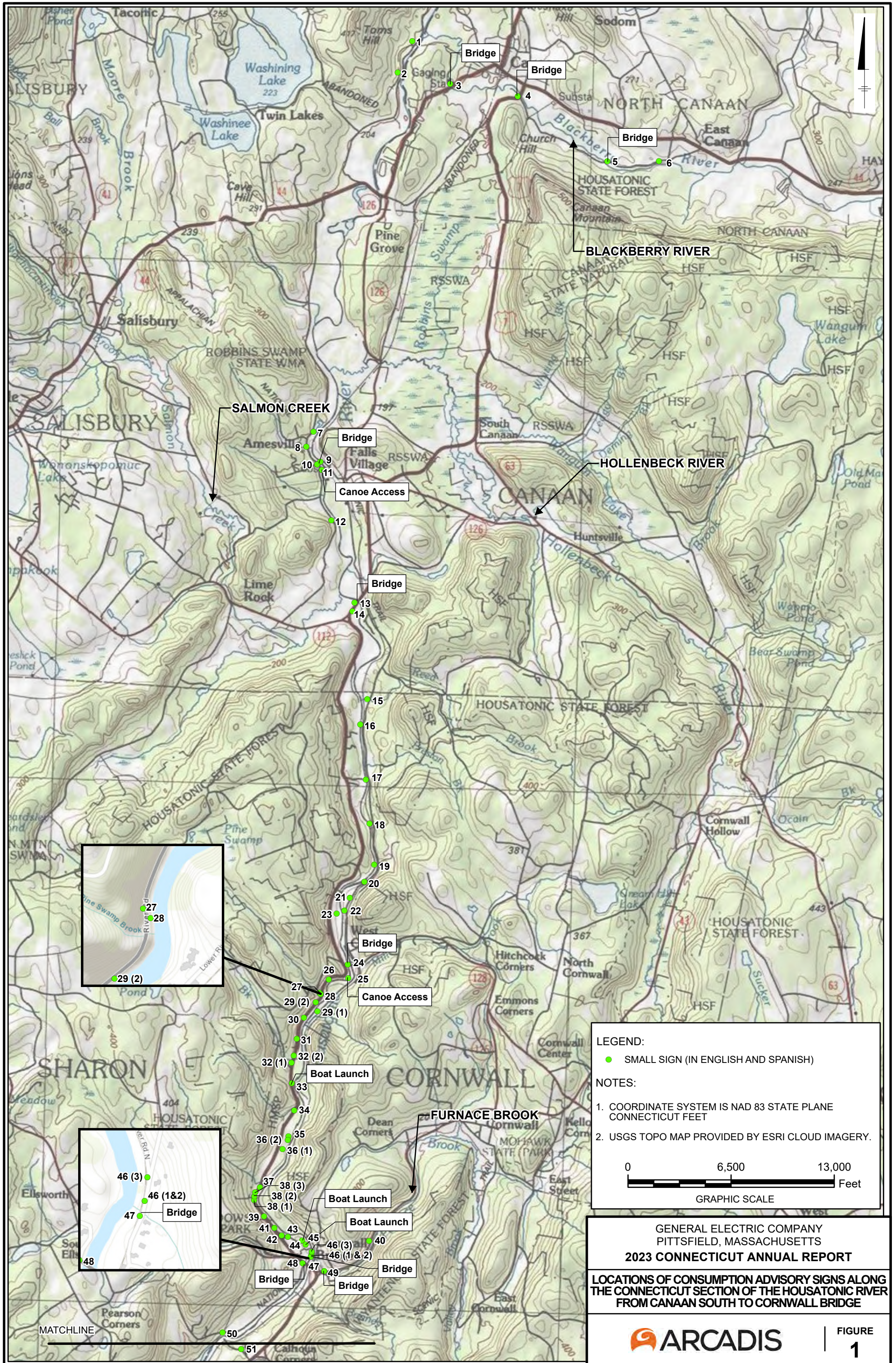
- Reach 10, Massachusetts/Connecticut border to Falls Village Dam
- Reach 11, Falls Village Dam to Cornwall Bridge
- Reach 12, Cornwall Bridge to Bulls Bridge Dam
- Reach 13, Bulls Bridge Dam to Bleachery Dam
- Reach 14, Bleachery Dam to Shepaug Dam (Lake Lillinonah)
- Reach 15, Shepaug Dam to Stevenson Dam (Lake Zoar)
- Reach 16, Stevenson Dam to Lake Housatonic/Derby Dam (Lake Housatonic)
- Reach 17, Lake Housatonic/Derby Dam to Long Island Sound

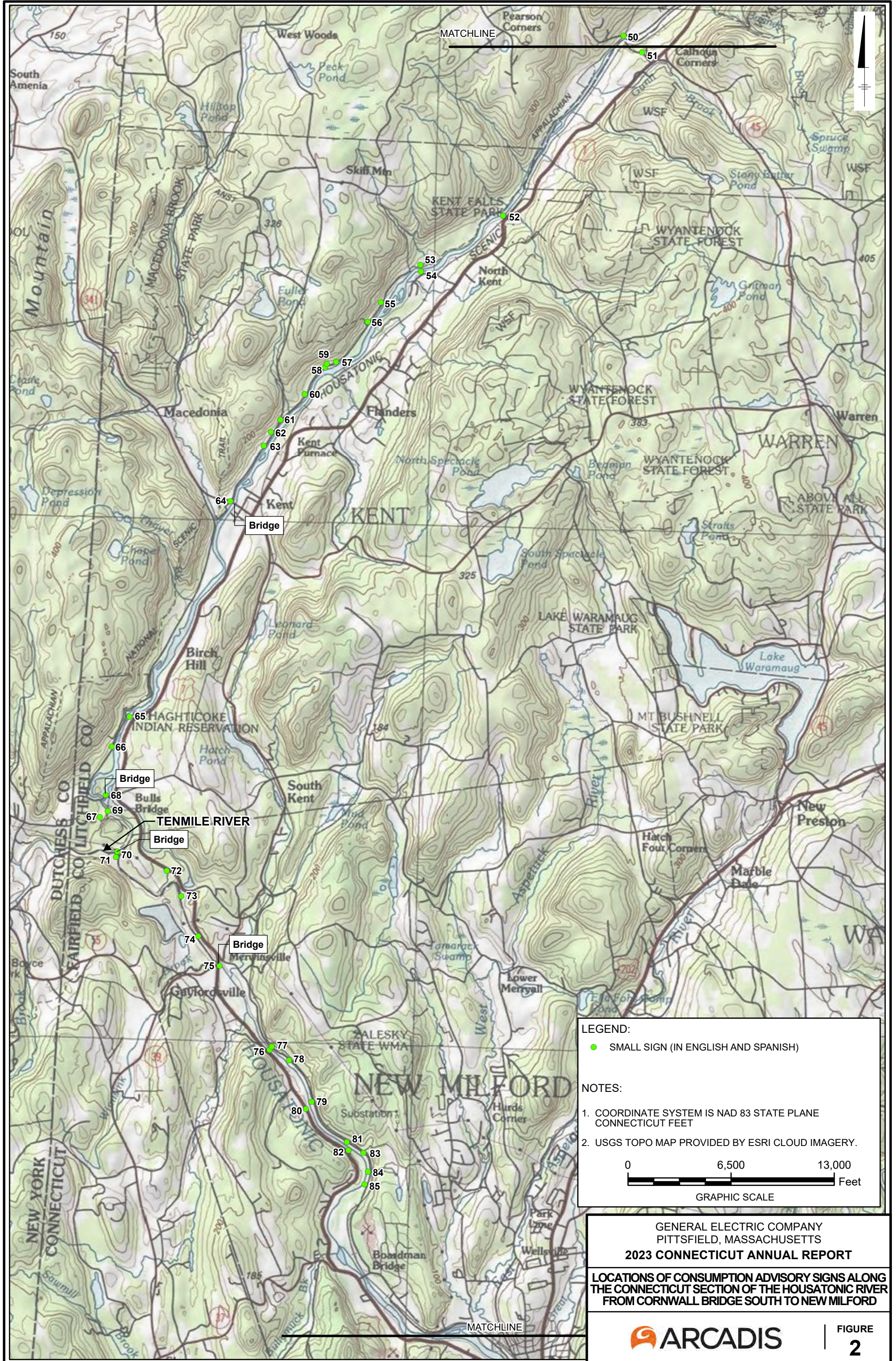
Table 2
Fishing License Agents Provided Consumption Advisory Pamphlet
Biota Consumption Advisory Outreach Annual Report
Housatonic Rest of River - Connecticut

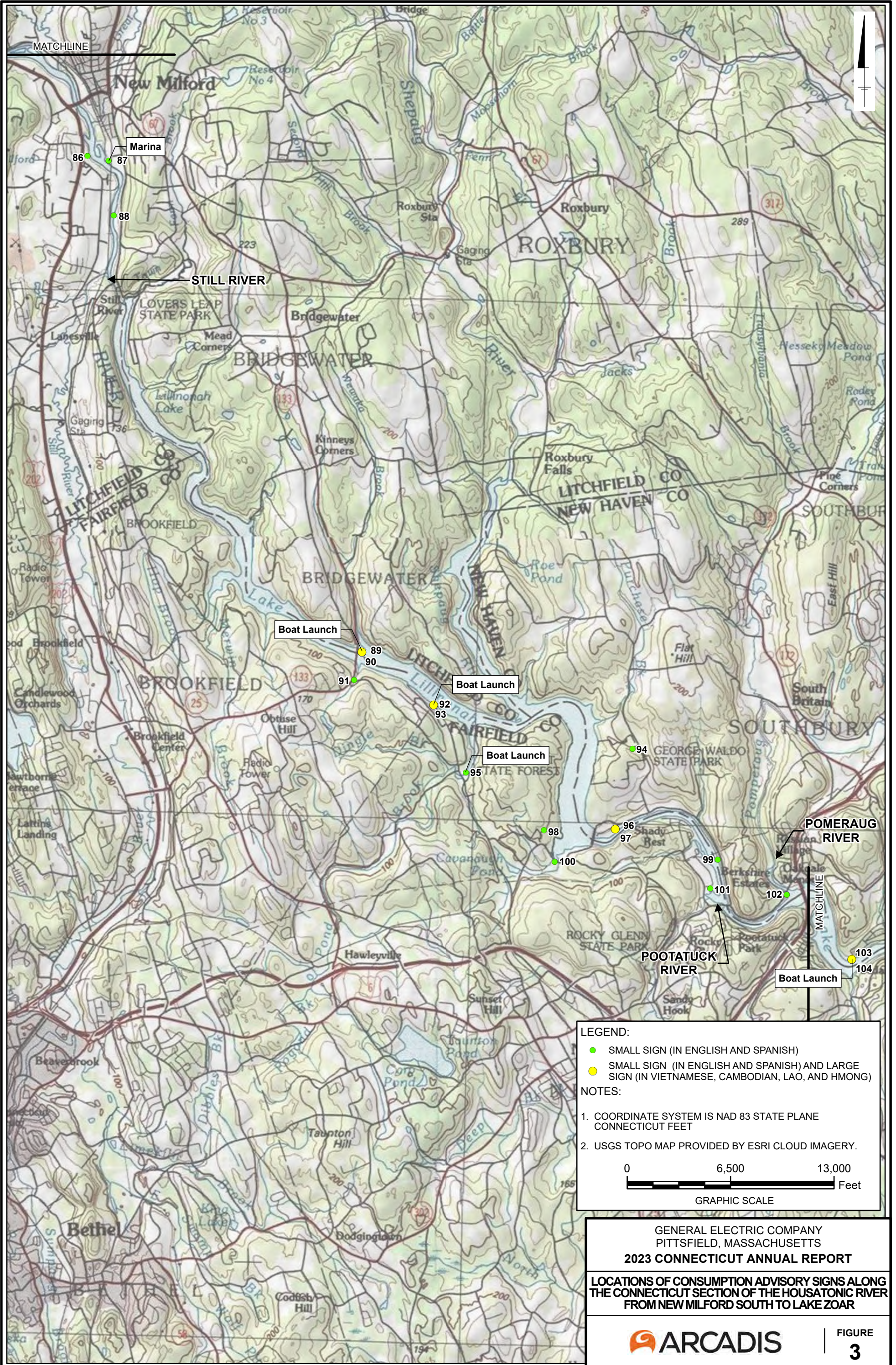


County	Business Name	Business Address
Fairfield	Bass Pro Outdoor World, LLC	1 Bass Pro Dr., Bridgeport, Connecticut, 06608
Fairfield	Brookfield Town Clerk	100 Pocono Rd., Brookfield, Connecticut, 06804
Fairfield	Candlewood Bait & Tackle	36 Tamarack Ave., Danbury, Connecticut, 06811
Fairfield	Dick's Sporting Goods #1402	444 Connecticut Ave., Norwalk, Connecticut, 06854
Fairfield	Dick's Sporting Goods #612	7 Backus Ave., Danbury, Connecticut, 06810
Fairfield	Fisherman's Paradise, LLC	2 Fort Point St., Norwalk, Connecticut, 06855
Fairfield	Monroe Town Clerk	7 Fan Hill Rd., Monroe, Connecticut, 06468
Fairfield	Orbit Marine Sports Center, Inc.	3273 Fairfield Ave., Bridgeport, Connecticut, 06605
Fairfield	Pete's Place	124 Jefferson St., Stamford, Connecticut, 06902
Fairfield	Ridgefield Town Clerk	400 Main St., Ridgefield, Connecticut, 06877
Fairfield	Shelton Town Clerk	54 Hill St., Shelton, Connecticut, 06484
Fairfield	Sherman Town Clerk	9 Route 39 N, Sherman, Connecticut, 06784
Fairfield	Stratford Bait & Tackle	1076 Stratford Ave., Stratford, Connecticut, 06615
Fairfield	Stratford Town Clerk	2725 Main St., Stratford, Connecticut, 06615
Litchfield	Back to Basics	31 Main St., Terryville, Connecticut, 06786
Litchfield	Canaan Town Clerk	108 Main St., Falls Village, Connecticut, 06031
Litchfield	Cornwall Town Clerk	26 Pine St., West Cornwall, Connecticut, 06796
Litchfield	DEEP Western District HQ	230 Plymouth Rd., Harwinton, Connecticut, 06791
Litchfield	Jim's Bait & Tackle	391 Canaan Norfolk Rd., Canaan, Connecticut, 06018
Litchfield	Kent Town Clerk	41 Kent Green Blvd., Kent, Connecticut, 06757
Litchfield	New Milford Town Clerk	10 Main St., New Milford, Connecticut, 06776
Litchfield	Salisbury Town Clerk	27 Main St., Salisbury, Connecticut, 06068
Litchfield	Sanzeri's	288 S Main St., Thomaston, Connecticut, 06787
Litchfield	Torrington Wireless	246 N Elm St., Torrington, Connecticut, 06790
Litchfield	Upcountry Sportfishing	352 Main St., New Hartford, Connecticut, 06057
New Haven	Bobby J's Bait & Tackle	354 New Haven Ave., Milford, Connecticut, 06460
New Haven	Captain Morgan's Bait & Tackle	21 Boston Post Rd., Madison, Connecticut, 06443
New Haven	Dee's Bait & Tackle	93 Clay St., New Haven, Connecticut, 06513
New Haven	Derby Town Clerk	1 Elizabeth St., Derby, Connecticut, 06418
New Haven	Dick's Sporting Goods #1246	411 Universal Dr. N, North Haven, Connecticut, 06473
New Haven	Dick's Sporting Goods #1389	275 Union St., Waterbury, Connecticut, 06706
New Haven	Dick's Sporting Goods #169	470 Lewis Ave., Meriden, Connecticut, 06451
New Haven	Dick's Sporting Goods #282	1201 Boston Post Rd., Milford, Connecticut, 06460
New Haven	Fisherman's Paradise, LLC	38 Bridgeport Ave., Milford, Connecticut, 06460
New Haven	Milford Town Clerk	70 W River St., Milford, Connecticut, 06460
New Haven	New England Diving of Connecticut	1060 S Colony Rd., Wallingford, Connecticut, 06492
New Haven	Oxford Town Clerk	486 Oxford Rd., Oxford, Connecticut, 06478
New Haven	Seymour Town Clerk	1 First St., Seymour, Connecticut, 06483

Figures







LEGEND:

- SMALL SIGN (IN ENGLISH AND SPANISH)
- SMALL SIGN (IN ENGLISH AND SPANISH) AND LARGE SIGN (IN VIETNAMESE, CAMBODIAN, LAO, AND HMONG)

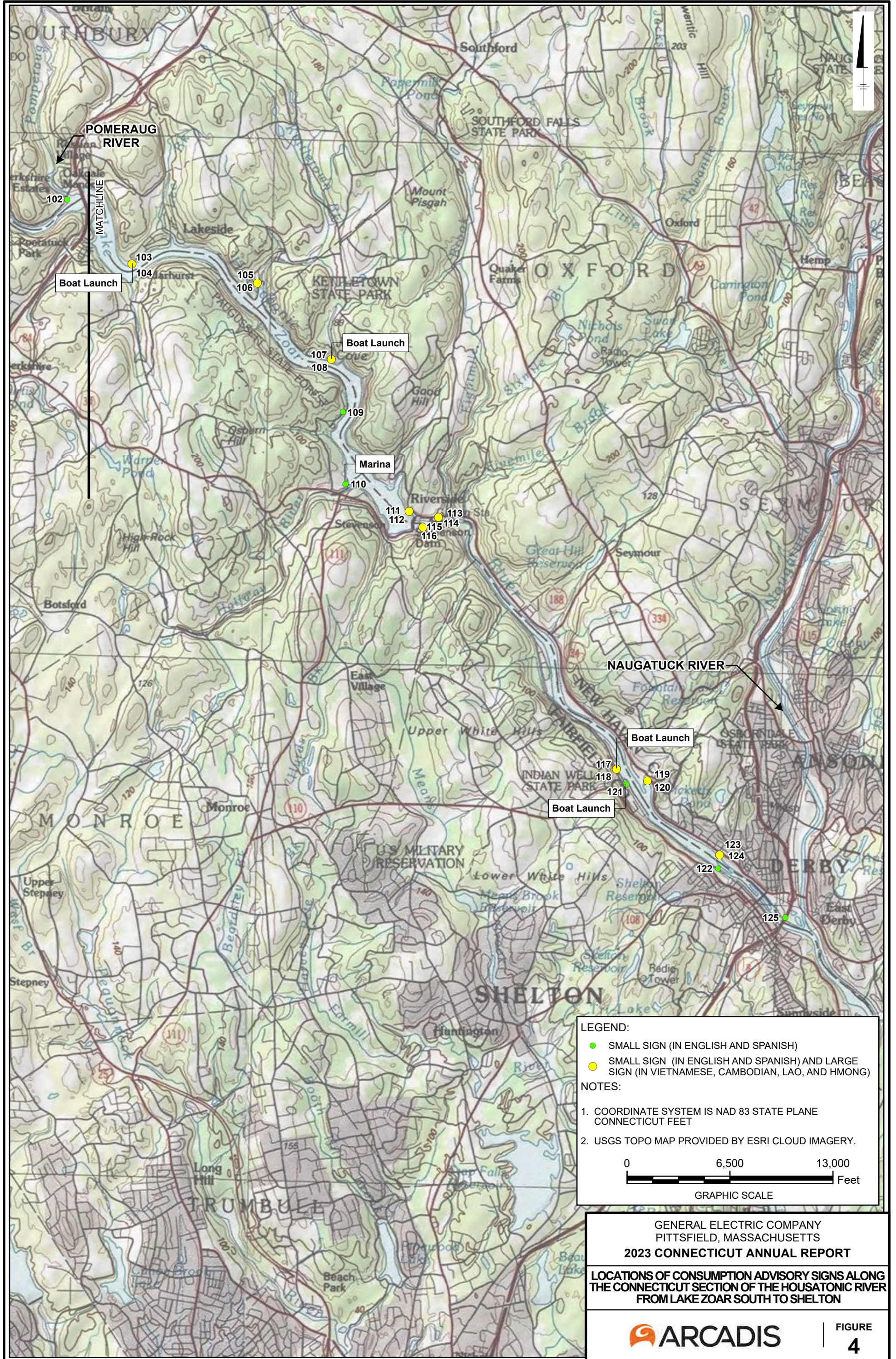
NOTES:

1. COORDINATE SYSTEM IS NAD 83 STATE PLANE CONNECTICUT FEET
2. USGS TOPO MAP PROVIDED BY ESRI CLOUD IMAGERY.

0 6,500 13,000
Feet

GRAPHIC SCALE

GENERAL ELECTRIC COMPANY
PITTSFIELD, MASSACHUSETTS
2023 CONNECTICUT ANNUAL REPORT
LOCATIONS OF CONSUMPTION ADVISORY SIGNS ALONG
THE CONNECTICUT SECTION OF THE HOUSATONIC RIVER
FROM NEW MILFORD SOUTH TO LAKE ZOAR



Attachment A

Connecticut Fish Consumption Advisory Signs

Warning to People Who Fish

Although many fish in Connecticut are safe and healthy to eat, some fish from Connecticut waters have dangerous chemicals in them.

Housatonic River Upstream of the Derby Dam

Includes:

- **Lake Zoar**
- **Lake Lillinonah**
- **Lake Housatonic**

Pregnant women, women who plan to become pregnant and children under six should not eat fish from the Housatonic River upstream of the Derby Dam. Others should not eat Catfish, Carp, Eels or Trout from the Housatonic River. People other than pregnant women and children under six should eat no more than one meal every two months of Bass, White Perch and Bullheads.

If you follow this advice, you and your family will be safe and healthy eating fish caught in Connecticut waters.

For more information, call the Connecticut Department of Public Health (860) 509-7742, or the Department of Environmental Protection (860) 424-3474.

Warning to Fishermen and Their Families has been produced as a collaborative project of Connecticut's Department of Public Health and Environmental Protection.



Keeping Connecticut Healthy



AVISO A TODAS LAS PERSONAS QUE PESCAN

A pesar de que la mayoría de los peces de Connecticut son seguros y saludables para consumir, existen algunos que poseen peligrosos químicos en ellos.

El Río Housatonic

(que se encuentra corriente arriba del Derby Dam)

Incluidos:

- El lago Zoar
- El lago Lillinonah
- El Lago Housatonic

-Mujeres embarazadas, o mujeres que planean estarlo y niños menores de seis años **No deberían comer peces** de las agua del Río Housatonic que esta corriente arriba del Derby Dam.

-Todas las demás personas no deben comer pez gato, carpas, truchas de el Río Housatonic.

-Todos los demás excepto mujeres embarazadas y niños menores de seis años pueden comer no mas una vez cada dos meses del Bass, La trucha Blanca y el Bullheads.

-Para mas detalles para peces libre de riesgos para consumo que no están considerados en este aviso, consulte su Guía de Pescadores de DEP.

Si se siguen estos avisos, tanto usted como su familia estarán libres de riesgos y saludables cuando coman de los peces atrapados en las agua de Connecticut.

Para mas información, comuníquese con el Departamento de Salud Publica al (860) 509-7742 o al Departamento de Protección del Medio Ambiente al (860) 424-3474.



Warning to People Who Fish: Connecticut Rivers and Lakes - Statewide has been produced as a collaborative project of Connecticut's Departments of Public Health and Environmental Protection.



Attachment B

2023 Consumption Advisory Sign Photographic Log

PHOTOGRAPH LOG

Housatonic River
 2023 Biota Consumption Advisory Sign Maintenance
 Housatonic Rest of River - Connecticut



Site Name:
 Near old bridge abutments

Site Location:
 1

Date Photograph Taken:
 June 30, 2023

Comments:
 Found both English and Spanish signs past old bridge abutments on large tree off Weatogue Rd in Salisbury, CT



Site Name:
 Fire dept. pull off

Site Location:
 2

Date Photograph Taken:
 June 30, 2023

Comments:
 Found both English and Spanish signs next to fire department water hookup on Weatogue Rd in Salisbury, CT. Location was cut out so that signs could be seen

PHOTOGRAPH LOG

Housatonic River
 2023 Biota Consumption Advisory Sign Maintenance
 Housatonic Rest of River - Connecticut

	<p>Site Name: At Rte 44 bridge</p> <p>Site Location: 3</p> <p>Date Photograph Taken: June 30, 2023</p> <p>Comments: Found both English and Spanish signs on telephone pole next to bridge off Church St./Rt. 44 in North Canaan, CT</p>
---	---

	<p>Site Name: At Rte 7 bridge</p> <p>Site Location: 4</p> <p>Date Photograph Taken: June 30, 2023</p> <p>Comments: Found both English and Spanish signs on telephone pole adjacent to bridge at corner of Rt. 7 and Lower Rd. in North Canaan, CT. Location was cut out so that signs could be seen</p>
--	---

PHOTOGRAPH LOG

Housatonic River
 2023 Biota Consumption Advisory Sign Maintenance
 Housatonic Rest of River - Connecticut

	<p>Site Name: At lower road bridge</p> <p>Site Location: 5</p> <p>Date Photograph Taken: June 30, 2023</p> <p>Comments: Found both English and Spanish signs on telephone pole off southeast corner of bridge on Lower Rd. in North Canaan, CT</p>
---	--

	<p>Site Name: At blast furnace historic site</p> <p>Site Location: 6</p> <p>Date Photograph Taken: June 30, 2023</p> <p>Comments: Found both English and Spanish signs on tree near Blackberry River at Beckley Iron Furnace State Park. Park just before bridge and walk to bottom of falls in North Canaan, CT</p>
--	--

PHOTOGRAPH LOG

Housatonic River
 2023 Biota Consumption Advisory Sign Maintenance
 Housatonic Rest of River - Connecticut



Site Name:
 Great falls upper parking

Site Location:
 7

Date Photograph Taken:
 June 30, 2023

Comments:
 Replaced both English and Spanish signs on large tree at end of Great Falls View Parking Lot off Housatonic River Rd., in Salisbury, CT



Site Name:
 Lower great falls parking

Site Location:
 8

Date Photograph Taken:
 June 30, 2023

Comments:
 Found English and Spanish signs on large tree at Lower Great Falls Pull-Off on Housatonic River Rd., in Salisbury, CT

PHOTOGRAPH LOG

Housatonic River
 2023 Biota Consumption Advisory Sign Maintenance
 Housatonic Rest of River - Connecticut

	<p>Site Name: Telephone pole east side of bridge</p> <p>Site Location: 9</p> <p>Date Photograph Taken: June 30, 2023</p> <p>Comments: Found English and Spanish signs on telephone pole near northeast corner of Falls River Bridge off Water St. in Falls Village, CT</p>
--	--

	<p>Site Name: Pull off above bridge</p> <p>Site Location: 10</p> <p>Date Photograph Taken: June 30, 2023</p> <p>Comments: Found English sign on tree at pull-off at Falls Mountain Rd. and Dugway Rd. in Salisbury, CT. Replaced Spanish sign on same tree</p>
--	--

PHOTOGRAPH LOG

Housatonic River
 2023 Biota Consumption Advisory Sign Maintenance
 Housatonic Rest of River - Connecticut



Site Name:
 Canoe access kiosk

Site Location:
 11

Date Photograph Taken:
 June 30, 2023

Comments:
 Found both English and Spanish signs on Falls Village Canoe access kiosk off Dugway Rd. in Salisbury, CT



Site Name:
 D.S. canoe access pull off

Site Location:
 12

Date Photograph Taken:
 June 30, 2023

Comments:
 Found Spanish sign on large tree adjacent to pull-off on Dugway Rd. in Salisbury, CT. Replaced English sign on same tree

PHOTOGRAPH LOG

Housatonic River
2023 Biota Consumption Advisory Sign Maintenance
Housatonic Rest of River - Connecticut



Site Name:
Posts along corn field

Site Location:
13

Date Photograph Taken:
June 30, 2023

Comments:
Found both English and Spanish signs on large post near southwest corner of bridge on Rt. 7 in Salisbury, CT



Site Name:
At kiosk DS RT 7, 112 bridge

Site Location:
14

Date Photograph Taken:
June 30, 2023

Comments:
Found both English and Spanish signs on post of Appalachian Trail marker (southbound) at pull-off off on Rt. 7 in Salisbury, CT

PHOTOGRAPH LOG

Housatonic River
 2023 Biota Consumption Advisory Sign Maintenance
 Housatonic Rest of River - Connecticut



Site Name:
 Pull off above reed brook

Site Location:
 15

Date Photograph Taken:
 June 30, 2023

Comments:
 Found both English and Spanish signs. Located on tree at start of footpath adjacent to pull-off on River Road in Cornwall, CT. Location was cut out so that signs could be seen



Site Name:
 Tree below RR crossing

Site Location:
 16

Date Photograph Taken:
 June 30, 2023

Comments:
 Found both English and Spanish signs on tree near river adjacent to pull-off near railroad crossing on River Rd. in Cornwall, CT. Location was cut out so that signs could be seen

PHOTOGRAPH LOG

Housatonic River
 2023 Biota Consumption Advisory Sign Maintenance
 Housatonic Rest of River - Connecticut



Site Name:

Tree across from Indian Weir-
 River Road Cornwall

Site Location:

17

Date Photograph Taken:

June 30, 2023

Comments:

Found both English and Spanish signs on large tree overhanging river, adjacent to pull-off near railroad crossing on River Rd. in Cornwall, CT



Site Name:

Pull off east side of trail

Site Location:

18

Date Photograph Taken:

June 30, 2023

Comments:

Found both English and Spanish signs on tree adjacent to small pull-off on River Rd. in Cornwall, CT

PHOTOGRAPH LOG

Housatonic River
 2023 Biota Consumption Advisory Sign Maintenance
 Housatonic Rest of River - Connecticut



Site Name:
 Large pull off along river

Site Location:
 19

Date Photograph Taken:
 June 30, 2023

Comments:
 Found Spanish sign on tree adjacent to large pull-off on River Rd. in Cornwall, CT. Replaced English sign on same tree. Location was cut out so that signs could be seen



Site Name:
 Small pull off along river

Site Location:
 20

Date Photograph Taken:
 June 30, 2023

Comments:
 Found Spanish sign on large tree adjacent to pull-off on River Rd. in Cornwall, CT. Replaced English sign on same tree. Location was cut out so that signs could be seen

PHOTOGRAPH LOG

Housatonic River
 2023 Biota Consumption Advisory Sign Maintenance
 Housatonic Rest of River - Connecticut

	<p>Site Name: 2nd pull along field</p> <p>Site Location: 21</p> <p>Date Photograph Taken: June 30, 2023</p> <p>Comments: Found English and Spanish signs on tree adjacent to second pull-off near field on River Rd. in Cornwall, CT. Location was cut out so that signs could be seen</p>
---	--

	<p>Site Name: Small pull off along field</p> <p>Site Location: 22</p> <p>Date Photograph Taken: June 30, 2023</p> <p>Comments: Found both English and Spanish signs on post at first pull-off on River Rd. in Cornwall, CT</p>
--	--

PHOTOGRAPH LOG

Housatonic River
 2023 Biota Consumption Advisory Sign Maintenance
 Housatonic Rest of River - Connecticut



Site Name:
 Elms North Parking

Site Location:
 23

Date Photograph Taken:
 June 29, 2023

Comments:
 Found both English and Spanish signs on post at end of parking loop off Rt. 7 in Sharon, CT. Location was cut out so that signs could be seen



Site Name:
 Mill River bridge

Site Location:
 24

Date Photograph Taken:
 June 29, 2023

Comments:
 Found both English and Spanish signs on telephone pole at corner of Lower River Rd. and West Cornwall covered bridge in West Cornwall, CT.

PHOTOGRAPH LOG

Housatonic River
 2023 Biota Consumption Advisory Sign Maintenance
 Housatonic Rest of River - Connecticut

	<p>Site Name: Garbage pool</p> <p>Site Location: 25</p> <p>Date Photograph Taken: June 29, 2023</p> <p>Comments: Found both English and Spanish signs on tree at "The Bend" canoe access launch off Lower River Rd. in West Cornwall, CT. Location was cut out so that signs could be seen</p>
---	--

	<p>Site Name: Pull off above fly section</p> <p>Site Location: 26</p> <p>Date Photograph Taken: June 29, 2023</p> <p>Comments: Found English sign on tree adjacent to pull-off on Rt. 7 just northeast of Pine Swamp Brook in Sharon, CT. Replaced Spanish sign on same tree. Location was cut out so that signs could be seen</p>
--	--

PHOTOGRAPH LOG

Housatonic River
 2023 Biota Consumption Advisory Sign Maintenance
 Housatonic Rest of River - Connecticut



Site Name:
 Pull Off US Pine Swamp Brook

Site Location:
 27

Date Photograph Taken:
 June 29, 2023

Comments:
 Found both English and Spanish signs on tree at Rt. 7 pull-off just after Pine Swamp Brook, adjacent to pull-off on non-river side of road, in Sharon, CT. Location was cut out so that signs could be seen



Site Name:
 Pine Swamp Brook

Site Location:
 28

Date Photograph Taken:
 June 29, 2023

Comments:
 Found English and Spanish signs on tree across from Rt. 7 one car pull-off just after Pine Swamp Brook in Sharon, CT. Location was cut out so that signs could be seen

PHOTOGRAPH LOG

Housatonic River
 2023 Biota Consumption Advisory Sign Maintenance
 Housatonic Rest of River - Connecticut



Site Name:
 Trinity pull off

Site Location:
 29(1)

Date Photograph Taken:
 June 29, 2023

Comments:
 Found both English and Spanish signs on large pine tree adjacent to Trinity Riverside Trailhead at end of Lower River Rd. in Cornwall, CT



Site Name:
 Trinity pull off

Site Location:
 29(2)

Date Photograph Taken:
 June 29, 2023

Comments:
 Found English and Spanish signs on tree near river, along Rt. 7 in Sharon, CT

PHOTOGRAPH LOG

Housatonic River
 2023 Biota Consumption Advisory Sign Maintenance
 Housatonic Rest of River - Connecticut



Site Name:
 In front of Clarkes

Site Location:
 30

Date Photograph Taken:
 June 29, 2023

Comments:
 Found both English and Spanish signs on tree across Rt. 7 from Clarke Outdoors building in Sharon, CT



Site Name:
 Border of TMA fly section

Site Location:
 31

Date Photograph Taken:
 June 29, 2023

Comments:
 Found English and Spanish signs across from Rt. 7 pull-off at start of Trout Management Area on tree in Sharon, CT

PHOTOGRAPH LOG

Housatonic River
2023 Biota Consumption Advisory Sign Maintenance
Housatonic Rest of River - Connecticut



Site Name:
First pull off after Carse Brook

Site Location:
32(1)

Date Photograph Taken:
June 29, 2023

Comments:
Found both Spanish and English signs on tree before Carse Brook at Rt. 7 pull-off in Sharon, CT



Site Name:
First pull off after Carse Brook

Site Location:
32(2)

Date Photograph Taken:
June 29, 2023

Comments:
Found both Spanish and English signs on tree just after Carse Brook at Rt. 7 pull-off in Sharon, CT

PHOTOGRAPH LOG

Housatonic River
2023 Biota Consumption Advisory Sign Maintenance
Housatonic Rest of River - Connecticut



Site Name:
Cellar hole

Site Location:
33

Date Photograph Taken:
June 29, 2023

Comments:
Found English and Spanish signs at Cellar Hole boat launch pull-off on Rt. 7 in Sharon, CT



Site Name:
Pull off below cellar hole

Site Location:
34

Date Photograph Taken:
June 29, 2023

Comments:
Found both English and Spanish signs on tree at Rt. 7 pull-off with "No Swimming No Picnicking" sign in Sharon, CT

PHOTOGRAPH LOG

Housatonic River
 2023 Biota Consumption Advisory Sign Maintenance
 Housatonic Rest of River - Connecticut

	<p>Site Name: End of campsites at meadows</p> <p>Site Location: 35</p> <p>Date Photograph Taken: June 29, 2023</p> <p>Comments: Found both English and Spanish signs on tree at end of road, down path about 100 ft in Housatonic Meadows State Campground (take left at entry - all the way to end at trail) in Sharon, CT. Location was cut out so that signs could be seen</p>
---	---

	<p>Site Name: Housatonic Meadows campground</p> <p>Site Location: 36(1)</p> <p>Date Photograph Taken: June 29, 2023</p> <p>Comments: Found Spanish and English signs on tree before cabins at Housatonic Meadows State Campground (take a left at entry) in Sharon, CT</p>
--	--

PHOTOGRAPH LOG

Housatonic River
 2023 Biota Consumption Advisory Sign Maintenance
 Housatonic Rest of River - Connecticut



Site Name:
 Housatonic Meadows
 campground

Site Location:
 36(2)

Date Photograph Taken:
 June 29, 2023

Comments:
 Found Spanish and English signs on tree at end of road past cabins at Housatonic Meadows State Campground (take a left at entry - just after cabins before end of road) in Sharon, CT



Site Name:
 In front of pine knob loop

Site Location:
 37

Date Photograph Taken:
 June 29, 2023

Comments:
 Found both English and Spanish signs on tree across Rt. 7 from Pine Knob Loop Trailhead Parking in Cornwall, CT

PHOTOGRAPH LOG

Housatonic River
 2023 Biota Consumption Advisory Sign Maintenance
 Housatonic Rest of River - Connecticut



Site Name:
 Dual pull off below pine knob

Site Location:
 38(1)

Date Photograph Taken:
 June 29, 2023

Comments:
 Found English and Spanish signs on telephone pole adjacent to Rt. 7 pull-off just before Pine Knob Loop Trail in Sharon, CT



Site Name:
 Dual pull off below pine knob

Site Location:
 38(2)

Date Photograph Taken:
 June 29, 2023

Comments:
 Found English and Spanish signs on telephone pole just north of Rt. 7 pull-off before Pine Knob Loop Trail in Sharon, CT

PHOTOGRAPH LOG

Housatonic River
 2023 Biota Consumption Advisory Sign Maintenance
 Housatonic Rest of River - Connecticut

	<p>Site Name: Dual pull off below pine knob</p> <p>Site Location: 38(3)</p> <p>Date Photograph Taken: June 29, 2023</p> <p>Comments: Found English and Spanish signs on tree just south of Pine Knob Loop Trail on west side of Rt. 7 in Sharon, CT. Location was cut out so that signs could be seen</p>
---	---

	<p>Site Name: Second pull off upstream Housatonic meadows</p> <p>Site Location: 39</p> <p>Date Photograph Taken: June 29, 2023</p> <p>Comments: Replaced both English and Spanish signs on tree at pull-off on Rt. 7 in Sharon, CT</p>
--	--

PHOTOGRAPH LOG

Housatonic River
 2023 Biota Consumption Advisory Sign Maintenance
 Housatonic Rest of River - Connecticut



Site Name:

At roadside pull-off with picnic table

Site Location:

40

Date Photograph Taken:

June 29, 2023

Comments:

Found both English and Spanish signs on tree adjacent to pull-off w/ picnic tables on Furnace Brook Rd. in Cornwall, CT



Site Name:

First pull off upstream Housatonic meadows

Site Location:

41

Date Photograph Taken:

June 29, 2023

Comments:

Found both English and Spanish signs on large pine tree at pull-off on Rt. 7, just north of Housatonic Meadows State Park in Sharon, CT

PHOTOGRAPH LOG

Housatonic River
 2023 Biota Consumption Advisory Sign Maintenance
 Housatonic Rest of River - Connecticut



Site Name:
 Housatonic meadows parking

Site Location:
 42

Date Photograph Taken:
 June 29, 2023

Comments:
 Found both English and Spanish signs attached to board and sign post at parking area in Housatonic Meadows State Park off Rt. 7 in Sharon, CT



Site Name:
 Housatonic meadows water entry

Site Location:
 43

Date Photograph Taken:
 June 29, 2023

Comments:
 Found both English and Spanish signs on tree just south of Housatonic Meadows State Park parking area, off Rt. 7 in Sharon, CT

PHOTOGRAPH LOG

Housatonic River
 2023 Biota Consumption Advisory Sign Maintenance
 Housatonic Rest of River - Connecticut

	<p>Site Name: Boat launch Housatonic meadows</p> <p>Site Location: 44</p> <p>Date Photograph Taken: June 29, 2023</p> <p>Comments: Found both English and Spanish signs on post near boat launch in Housatonic Meadows State Park off Rt. 7 in Sharon, CT</p>
---	---

	<p>Site Name: Commercial boat launch</p> <p>Site Location: 45</p> <p>Date Photograph Taken: June 29, 2023</p> <p>Comments: Found both English and Spanish signs on tree at commercial boat launch in Housatonic Meadows State Park at end of road off Rt. 7 in Sharon, CT. Location was cut out so that signs could be seen</p>
--	---

PHOTOGRAPH LOG

Housatonic River
 2023 Biota Consumption Advisory Sign Maintenance
 Housatonic Rest of River - Connecticut



Site Name:
 At bridge just above confluence with Housatonic River

Site Location:
 46 (1&2)

Date Photograph Taken:
 June 28, 2023

Comments:
 Found 2 sets of English and Spanish signs on telephone pole just past Furnace Brook confluence at parking area off Popple Swamp Rd. in Cornwall Bridge, CT



Site Name:
 At bridge just above confluence with Housatonic River

Site Location:
 46 (3)

Date Photograph Taken:
 June 28, 2023

Comments:
 Found Spanish sign on large pine tree at start of Lower River Rd., next to railroad tracks in Cornwall Bridge, CT. Replaced English sign on same tree

PHOTOGRAPH LOG

Housatonic River
 2023 Biota Consumption Advisory Sign Maintenance
 Housatonic Rest of River - Connecticut



Site Name:
 Furnace Brook confluence

Site Location:
 47

Date Photograph Taken:
 June 28, 2023

Comments:
 Found both English and Spanish signs on telephone pole by Furnace Brook confluence bridge off Popple Swamp Rd. in Cornwall Bridge, CT



Site Name:
 Underneath Cornwall bridge

Site Location:
 48

Date Photograph Taken:
 June 28, 2023

Comments:
 Found both English and Spanish signs at Francis L. Sheane Fly Fishing Area pull-off on River Rd, under Rt. 7 bridge in Sharon, CT

PHOTOGRAPH LOG

Housatonic River
 2023 Biota Consumption Advisory Sign Maintenance
 Housatonic Rest of River - Connecticut

	<p>Site Name: Above Rte 4 bridge</p> <p>Site Location: 49</p> <p>Date Photograph Taken: June 28, 2023</p> <p>Comments: Found both English and Spanish signs on tree at Furnace Brook Memorial pull-off on Rt. 4 just east of Cornwall Bridge, CT</p>
---	--

	<p>Site Name: End of River Rd trail head</p> <p>Site Location: 50</p> <p>Date Photograph Taken: June 28, 2023</p> <p>Comments: Found both English and Spanish signs on tree at pull-off on River Rd., close to Appalachian Trail gate in Sharon, CT</p>
--	---

PHOTOGRAPH LOG

Housatonic River
 2023 Biota Consumption Advisory Sign Maintenance
 Housatonic Rest of River - Connecticut

	<p>Site Name: Gunn Brook Pull off</p> <p>Site Location: 51</p> <p>Date Photograph Taken: June 28, 2023</p> <p>Comments: Found both English and Spanish signs on tree at end of Swifts Bridge Rd. off Rt. 7 in Cornwall Bridge, CT</p>
---	---

	<p>Site Name: Across from Kent Falls</p> <p>Site Location: 52</p> <p>Date Photograph Taken: June 28, 2023</p> <p>Comments: Found both English and Spanish signs on tree across the railroad tracks and to the southwest of Kent Falls State Park off Rt. 7 in Kent, CT. Location was cut out so that signs could be seen</p>
--	--

PHOTOGRAPH LOG

Housatonic River
 2023 Biota Consumption Advisory Sign Maintenance
 Housatonic Rest of River - Connecticut



Site Name:
 Footpath Kiosk End of River Rd

Site Location:
 53

Date Photograph Taken:
 June 28, 2023

Comments:
 Found both English and Spanish signs on Appalachian Trail kiosk at end of River Rd. in Kent, CT



Site Name:
 North Kent Pool

Site Location:
 54

Date Photograph Taken:
 June 28, 2023

Comments:
 Found both English and Spanish signs on Housatonic River Wildlife Management Area kiosk at end of N Kent No 2 Rd. in Kent, CT

PHOTOGRAPH LOG

Housatonic River
 2023 Biota Consumption Advisory Sign Maintenance
 Housatonic Rest of River - Connecticut

	<p>Site Name: Footpath near culvert past gate</p> <p>Site Location: 55</p> <p>Date Photograph Taken: June 28, 2023</p> <p>Comments: Found both English and Spanish signs on tree adjacent to footpath past Appalachian Trail gate on River Rd. in Kent, CT.</p>
---	---

	<p>Site Name: Hiker pull off River Rd</p> <p>Site Location: 56</p> <p>Date Photograph Taken: June 28, 2023</p> <p>Comments: Found both English and Spanish signs on tree adjacent to Appalachian Trail parking area on River Rd. in Kent, CT. Signs were cut out to be seen</p>
--	---

PHOTOGRAPH LOG

Housatonic River
 2023 Biota Consumption Advisory Sign Maintenance
 Housatonic Rest of River - Connecticut

	<p>Site Name: Long pull off River Rd</p> <p>Site Location: 57</p> <p>Date Photograph Taken: June 28, 2023</p> <p>Comments: Found English and Spanish signs on large tree adjacent to pull-off on River Rd. in Kent, CT</p>
---	--

	<p>Site Name: 2 car pull off above island</p> <p>Site Location: 58</p> <p>Date Photograph Taken: June 28, 2023</p> <p>Comments: Found both English and Spanish signs adjacent to 2 car pull-off on River Rd., on downstream end of two large islands in the Housatonic River, on large tree in Kent, CT</p>
--	---

PHOTOGRAPH LOG

Housatonic River
 2023 Biota Consumption Advisory Sign Maintenance
 Housatonic Rest of River - Connecticut



Site Name:
 Island pull off near brook

Site Location:
 59

Date Photograph Taken:
 June 27, 2023

Comments:
 Found both English and Spanish signs on tree adjacent to island pull-off on River Rd. in Kent, CT. Location is near small brook



Site Name:
 John Rodgers memorial

Site Location:
 60

Date Photograph Taken:
 June 27, 2023

Comments:
 Found both English and Spanish signs on tree next to river adjacent to pull-off on River Rd. John Rodgers Memorial in Kent, CT

PHOTOGRAPH LOG

Housatonic River
 2023 Biota Consumption Advisory Sign Maintenance
 Housatonic Rest of River - Connecticut

	<p>Site Name: First pull off on River Rd</p> <p>Site Location: 61</p> <p>Date Photograph Taken: June 27, 2023</p> <p>Comments: Found both English and Spanish signs on tree adjacent to pull-off on River Rd. in Kent, CT</p>
---	---

	<p>Site Name: Large pull off before River Rd</p> <p>Site Location: 62</p> <p>Date Photograph Taken: June 27, 2023</p> <p>Comments: Found English and Spanish signs on a telephone pole adjacent to pull-off on Skiff Mountain Rd. in Kent, CT</p>
--	---

PHOTOGRAPH LOG

Housatonic River
 2023 Biota Consumption Advisory Sign Maintenance
 Housatonic Rest of River - Connecticut

	<p>Site Name: Large log pull off</p> <p>Site Location: 63</p> <p>Date Photograph Taken: June 27, 2023</p> <p>Comments: Found both English and Spanish signs on dead tree adjacent to pull-off on Skiff Mountain Rd. in Kent, CT</p>
---	---

	<p>Site Name: 341 bridge street bridge</p> <p>Site Location: 64</p> <p>Date Photograph Taken: June 27, 2023</p> <p>Comments: Found both English and Spanish signs on tree under west side of Macedonia Rd. (Rt 341) bridge in Kent, CT. Park near trail off Skiff Mountain Rd. and walk under bridge. Location was cut out so that signs could be seen</p>
--	--

PHOTOGRAPH LOG

Housatonic River
 2023 Biota Consumption Advisory Sign Maintenance
 Housatonic Rest of River - Connecticut



Site Name:
 Pull off above Bulls Bridge

Site Location:
 65

Date Photograph Taken:
 June 27, 2023

Comments:
 Found both English and Spanish signs on tree adjacent to pull-off on Rt. 7 north of Bulls Bridge in Kent, CT. Location was cut out so that signs could be seen



Site Name:
 Large pull off Schaghticoke Rd

Site Location:
 66

Date Photograph Taken:
 June 27, 2023

Comments:
 Found both English and Spanish signs on large tree adjacent to barricaded pull-off off Schaghticoke Rd. in Kent, CT

PHOTOGRAPH LOG

Housatonic River
 2023 Biota Consumption Advisory Sign Maintenance
 Housatonic Rest of River - Connecticut

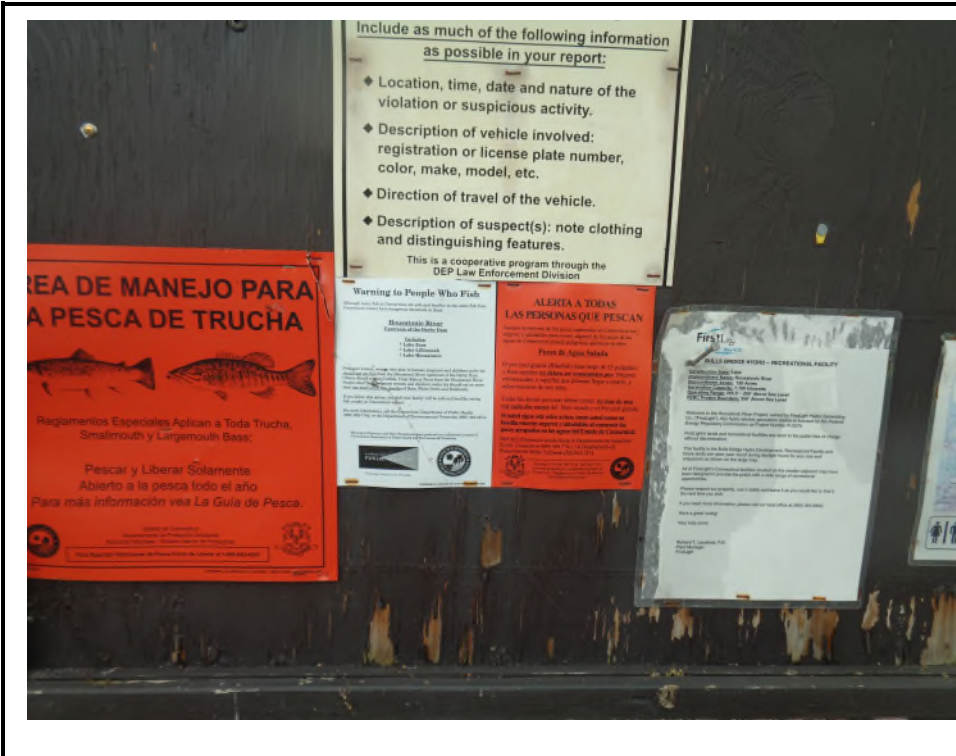


Site Name:
 Above Bulls Bridge kiosk

Site Location:
 67

Date Photograph Taken:
 June 27, 2023

Comments:
 Found both English and Spanish signs on tree past information kiosk off Bulls Bridge Rd. on west side of Housatonic River in Kent, CT



Site Name:
 Bulls Bridge Kiosk

Site Location:
 68

Date Photograph Taken:
 June 27, 2023

Comments:
 Found English and Spanish signs at kiosk off Bulls Bridge Rd. right past covered bridge on west side of Housatonic River in Kent, CT

PHOTOGRAPH LOG

Housatonic River
 2023 Biota Consumption Advisory Sign Maintenance
 Housatonic Rest of River - Connecticut

	<p>Site Name: Bulls Bridge pool</p> <p>Site Location: 69</p> <p>Date Photograph Taken: June 27, 2023</p> <p>Comments: Found both English and Spanish signs on tree near river. Park at Bulls Bridge and walk south down Appalachian Trail ~1,000 ft, Kent, CT</p>
---	---

	<p>Site Name: Ten Mile River bridge</p> <p>Site Location: 70</p> <p>Date Photograph Taken: June 27, 2023</p> <p>Comments: Found both English and Spanish signs on tree adjacent to Ten Mile River bridge. Park at Bulls Bridge and walk south on Appalachian Trail/Homestead Trail ~1 mile in Kent, CT</p>
--	--

PHOTOGRAPH LOG

Housatonic River
 2023 Biota Consumption Advisory Sign Maintenance
 Housatonic Rest of River - Connecticut

	<p>Site Name: 10 Mile River Campsites</p> <p>Site Location: 71</p> <p>Date Photograph Taken: June 27, 2023</p> <p>Comments: Found both English and Spanish signs on tree near Housatonic River at 10 Mile River Campsites. Park at Bulls Bridge and walk south on Appalachian Trail/Homestead Trail over Ten Mile River bridge, in Sherman, CT</p>
---	--

	<p>Site Name: Gunns Eddy lot</p> <p>Site Location: 72</p> <p>Date Photograph Taken: June 27, 2023</p> <p>Comments: Found Spanish sign on post to left of gate at Gunns Eddy lot off Rt. 7 in New Milford, CT. Replaced English sign on same post</p>
--	--

PHOTOGRAPH LOG

Housatonic River
 2023 Biota Consumption Advisory Sign Maintenance
 Housatonic Rest of River - Connecticut



Site Name:
 First light power plant

Site Location:
 73

Date Photograph Taken:
 June 27, 2023

Comments:
 Found both English and Spanish signs on tree near river adjacent to First Light Power access off Rt. 7 in New Milford, CT



Site Name:
 Pull off above Gaylordsville bridge

Site Location:
 74

Date Photograph Taken:
 June 27, 2023

Comments:
 Found English sign on tree adjacent to barricaded pull-off on Rt. 7 in New Milford, CT. Replaced Spanish sign on same tree.

PHOTOGRAPH LOG

Housatonic River
 2023 Biota Consumption Advisory Sign Maintenance
 Housatonic Rest of River - Connecticut



Site Name:
 Gaylordsville bridge

Site Location:
 75

Date Photograph Taken:
 June 27, 2023

Comments:
 Found both English and Spanish signs on tree near bottom of parking lot on southeast corner of Gaylordsville Bridge, at the end of a short trail, in Gaylordsville, CT



Site Name:
 Bend of the Road pull off Rt 37

Site Location:
 76

Date Photograph Taken:
 June 27, 2023

Comments:
 Found both English and Spanish signs on tree adjacent to small pull-off on Rt. 7, New Milford, CT. Signs sit back off Rt. 7 and were cut out to be seen

PHOTOGRAPH LOG

Housatonic River
 2023 Biota Consumption Advisory Sign Maintenance
 Housatonic Rest of River - Connecticut



Site Name:
 Second pull off on River Rd New Milford

Site Location:
 77

Date Photograph Taken:
 June 26, 2023

Comments:
 Found both English and Spanish signs on tree adjacent to seventh pull-off on River Rd. (coming from Boardman Rd.) in New Milford, CT



Site Name:
 Third pull off River Rd New Milford

Site Location:
 78

Date Photograph Taken:
 June 26, 2023

Comments:
 Found both English and Spanish signs on tree at sixth pull-off on River Rd. (coming from Boardman Rd.) in New Milford, CT

PHOTOGRAPH LOG

Housatonic River
 2023 Biota Consumption Advisory Sign Maintenance
 Housatonic Rest of River - Connecticut

	<p>Site Name: Fourth pull off River Rd New Milford</p> <p>Site Location: 79</p> <p>Date Photograph Taken: June 26, 2023</p> <p>Comments: Found both English and Spanish signs on tree at fifth pull-off on River Rd. (coming from Boardman Rd.) in New Milford, CT</p>
---	--

	<p>Site Name: Pulloff on RT 37 after Straight-away</p> <p>Site Location: 80</p> <p>Date Photograph Taken: June 27, 2023</p> <p>Comments: Found both English and Spanish signs on large tree about 100 yards to the northeast of new, small pull-off on Rt. 7, New Milford, CT. Signs sit back off Rt. 7 and were cut out to be seen</p>
--	---

PHOTOGRAPH LOG

Housatonic River
 2023 Biota Consumption Advisory Sign Maintenance
 Housatonic Rest of River - Connecticut

	<p>Site Name: Sixth pull off River Rd New Milford</p> <p>Site Location: 81</p> <p>Date Photograph Taken: June 26, 2023</p> <p>Comments: Found both English and Spanish signs at fourth pull-off on River Rd. (coming from Boardman Rd.), on tree adjacent to parking area, New Milford, CT. Cut back vines that were growing over signs</p>
---	---

	<p>Site Name: Pull off on Rt 37 US Private Rd</p> <p>Site Location: 82</p> <p>Date Photograph Taken: June 27, 2023</p> <p>Comments: Found both English and Spanish signs on tree adjacent to pull-off on Rt. 7, near Kennedy Ct, New Milford, CT</p>
--	--

PHOTOGRAPH LOG

Housatonic River
2023 Biota Consumption Advisory Sign Maintenance
Housatonic Rest of River - Connecticut



Site Name:
Beach pull off

Site Location:
83

Date Photograph Taken:
June 26, 2023

Comments:
Found English and Spanish signs on tree at third pull-off on River Rd. (coming from Boardman Rd.), New Milford, CT



Site Name:
Eighth pull off River Rd New Milford

Site Location:
84

Date Photograph Taken:
June 26, 2023

Comments:
Found both English and Spanish signs on tree at second pull-off on River Rd. (coming from Boardman Rd.), New Milford, CT

PHOTOGRAPH LOG

Housatonic River
 2023 Biota Consumption Advisory Sign Maintenance
 Housatonic Rest of River - Connecticut



Site Name:

Nineth pull off River Rd New Milford

Site Location:

85

Date Photograph Taken:

June 26, 2023

Comments:

Found both English and Spanish signs on large tree at first pull-off on River Rd., New Milford, CT. Cut back vines that were growing over signs



Site Name:

Bleachry Dam

Site Location:

86

Date Photograph Taken:

June 26, 2023

Comments:

Found both English and Spanish signs on large tree to the right of gate on path leading down to Bleachry Dam. Trail starts at back of parking lot for Orthodontics office, New Milford, CT

PHOTOGRAPH LOG

Housatonic River
 2023 Biota Consumption Advisory Sign Maintenance
 Housatonic Rest of River - Connecticut



Site Name:
 West Cove Marina

Site Location:
 87

Date Photograph Taken:
 June 26, 2023

Comments:
 Found English and Spanish signs on telephone pole next to boat launch at West Cove Marina. Drive to end of West St. and around back of building to launch, New Milford, CT



Site Name:
 Town Park

Site Location:
 88

Date Photograph Taken:
 June 26, 2023

Comments:
 Found English and Spanish signs on wood post at Addis Park boat launch off Lower Grove St. in New Milford, CT

PHOTOGRAPH LOG

Housatonic River
 2023 Biota Consumption Advisory Sign Maintenance
 Housatonic Rest of River - Connecticut



Site Name:
 Lillinonah State Boat Launch

Site Location:
 89

Date Photograph Taken:
 June 26, 2023

Comments:
 Found English, Spanish, and Vietnamese, Cambodian, Lao, Hmong signs at kiosk next to Bridgewater/ Lake Lillinonah Public Boat Launch in Bridgewater, CT



Site Name:
 Lillinonah State Boat Launch

Site Location:
 90

Date Photograph Taken:
 June 26, 2023

Comments:
 Found English, Spanish, and Vietnamese, Cambodian, Lao, Hmong signs at kiosk next to Bridgewater/ Lake Lillinonah Public Boat Launch in Bridgewater, CT

PHOTOGRAPH LOG

Housatonic River
 2023 Biota Consumption Advisory Sign Maintenance
 Housatonic Rest of River - Connecticut



Site Name:
 Lillinonah Woods

Site Location:
 91

Date Photograph Taken:
 June 26, 2023

Comments:
 Found both English and Spanish signs on kiosk at Lillinonah Woods Park off Obtuse Hill Rd., in Brookfield, CT



Site Name:
 Lillinonah Lake Boat Launch-
 Hanover Street

Site Location:
 92

Date Photograph Taken:
 June 23, 2023

Comments:
 Found English, Spanish, and Vietnamese, Cambodian, Lao, Hmong signs at kiosk next to Lake Lillinonah Town Park boat launch in Newtown, CT

PHOTOGRAPH LOG

Housatonic River
 2023 Biota Consumption Advisory Sign Maintenance
 Housatonic Rest of River - Connecticut

	<p>Site Name: Lillinonah Lake Boat Launch- Hanover Street</p> <p>Site Location: 93</p> <p>Date Photograph Taken: June 23, 2023</p> <p>Comments: Found English, Spanish, and Vietnamese, Cambodian, Lao, Hmong signs at kiosk next to Lake Lillinonah Town Park boat launch in Newtown, CT</p>
--	--

	<p>Site Name: George C Waldo State Park Area</p> <p>Site Location: 94</p> <p>Date Photograph Taken: June 23, 2023</p> <p>Comments: Replaced both English and Spanish signs on tree to left of access gate in George C Waldo State Park in Southbury, CT</p>
--	---

PHOTOGRAPH LOG

Housatonic River
 2023 Biota Consumption Advisory Sign Maintenance
 Housatonic Rest of River - Connecticut



Site Name:
 Pond Brook Confluence with
 Housatonic

Site Location:
 95

Date Photograph Taken:
 June 23, 2023

Comments:
 Found English and Spanish
 signs on kiosk next to Town of
 Newtown Park & Boat Ramp in
 Newtown, CT



Site Name:
 Below Shepaug River Dam

Site Location:
 96

Date Photograph Taken:
 June 23, 2023

Comments:
 Found English, Spanish, and
 Vietnamese, Cambodian, Lao,
 Hmong signs on large pine tree
 in the Housatonic River Project
 Recreation area, just
 downstream of Shepaug Dam in
 Southbury, CT

PHOTOGRAPH LOG

Housatonic River
 2023 Biota Consumption Advisory Sign Maintenance
 Housatonic Rest of River - Connecticut



Site Name:
 Below Shepaug River Dam

Site Location:
 97

Date Photograph Taken:
 June 23, 2023

Comments:
 Found English, Spanish, and Vietnamese, Cambodian, Lao, Hmong signs on large pine tree in the Housatonic River Project Recreation area, just downstream of Shepaug Dam in Southbury, CT



Site Name:
 Upper Paugusett Trails

Site Location:
 98

Date Photograph Taken:
 June 23, 2023

Comments:
 Found both English and Spanish signs on kiosk at end of Echo Valley Rd. - The Sugarbush at Upper Paugusett in Newtown, CT

PHOTOGRAPH LOG

Housatonic River
 2023 Biota Consumption Advisory Sign Maintenance
 Housatonic Rest of River - Connecticut



Site Name:
 River Road- Sandy Hook

Site Location:
 99

Date Photograph Taken:
 June 23, 2023

Comments:
 Found both English and Spanish signs on tree on River Rd. pull-off in Southbury, CT. Removed vines that were covering signs



Site Name:
 Newtown Forest Trails

Site Location:
 100

Date Photograph Taken:
 June 23, 2023

Comments:
 Found both English and Spanish signs on tree across Alberts Hill Rd. from parking area for Newtown Forest Association in Newtown, CT

PHOTOGRAPH LOG

Housatonic River
 2023 Biota Consumption Advisory Sign Maintenance
 Housatonic Rest of River - Connecticut

	<p>Site Name: Confluence of the Pootatuck and Housatonic</p> <p>Site Location: 101</p> <p>Date Photograph Taken: June 23, 2023</p> <p>Comments: Found both English and Spanish signs on large tree at back of parking lot off Bridge End Farm Ln. in park, Sandy Hook, CT. Cut and removed small trees that were covering the signs</p>
---	---

	<p>Site Name: Pomperaug River Confluence Area</p> <p>Site Location: 102</p> <p>Date Photograph Taken: June 23, 2023</p> <p>Comments: Replaced both English and Spanish signs on large tree at bottom of path off River Rd. in Southbury, CT. Park across River Rd. and walk down past gate. Also removed vine that was interfering with signs</p>
--	---

PHOTOGRAPH LOG

Housatonic River
 2023 Biota Consumption Advisory Sign Maintenance
 Housatonic Rest of River - Connecticut



Site Name:
 Lake Zoar Boat Launch

Site Location:
 103

Date Photograph Taken:
 June 23, 2023

Comments:
 Found English and Spanish signs on kiosk at Lake Zoar Public Boat Launch in Southbury, CT. Replaced Vietnamese, Cambodian, Lao, Hmong sign on same kiosk



Site Name:
 Lake Zoar Boat Launch

Site Location:
 104

Date Photograph Taken:
 June 23, 2023

Comments:
 Found English and Spanish signs on kiosk at Lake Zoar Public Boat Launch in Southbury, CT. Replaced Vietnamese, Cambodian, Lao, Hmong sign on same kiosk

PHOTOGRAPH LOG

Housatonic River
 2023 Biota Consumption Advisory Sign Maintenance
 Housatonic Rest of River - Connecticut



Site Name:
 Kettletown State Park

Site Location:
 105

Date Photograph Taken:
 June 23, 2023

Comments:
 Found English, Spanish, and Vietnamese, Cambodian, Lao, Hmong signs on kiosk, in Kettletown State Park, adjacent to cove of Lake Zoar, off Georges Hill Rd., Southbury, CT



Site Name:
 Kettletown State Park

Site Location:
 106

Date Photograph Taken:
 June 23, 2023

Comments:
 Found English, Spanish, and Vietnamese, Cambodian, Lao, Hmong signs on kiosk, in Kettletown State Park, adjacent to cove of Lake Zoar, off Georges Hill Rd., Southbury, CT

PHOTOGRAPH LOG

Housatonic River
 2023 Biota Consumption Advisory Sign Maintenance
 Housatonic Rest of River - Connecticut



Site Name:
 Jackson Cove Park

Site Location:
 107

Date Photograph Taken:
 June 20, 2023

Comments:
 Found English and Spanish signs on telephone pole adjacent to Jackson Cove boat launch, at Jackson Cove Park, Jackson Cove Rd, Oxford, CT. Replaced Vietnamese, Cambodian, Lao, Hmong sign on same pole



Site Name:
 Jackson Cove Park

Site Location:
 108

Date Photograph Taken:
 June 20, 2023

Comments:
 Found English and Spanish signs on telephone pole adjacent to Jackson Cove boat launch, at Jackson Cove Park, Jackson Cove Rd, Oxford, CT. Replaced Vietnamese, Cambodian, Lao, Hmong sign on same pole

PHOTOGRAPH LOG

Housatonic River
 2023 Biota Consumption Advisory Sign Maintenance
 Housatonic Rest of River - Connecticut

	<p>Site Name: Paugussett State Forest Zoar Trail</p> <p>Site Location: 109</p> <p>Date Photograph Taken: June 20, 2023</p> <p>Comments: Found both English and Spanish signs on kiosk, at Paugussett State Forest Zoar Trailhead at far end of Great Quarter Rd., Sandy Hook, CT</p>
---	--

	<p>Site Name: Marina Halfway River</p> <p>Site Location: 110</p> <p>Date Photograph Taken: June 20, 2023</p> <p>Comments: Found both English and Spanish signs on attendant's shed at Eichlers Cove Marina, Old Bridge Rd., Sandy Hook, CT</p>
--	--

PHOTOGRAPH LOG

Housatonic River
 2023 Biota Consumption Advisory Sign Maintenance
 Housatonic Rest of River - Connecticut



Site Name:
 Coppermine Rd Pulloff

Site Location:
 111

Date Photograph Taken:
 June 20, 2023

Comments:
 Found English and Spanish signs on tree adjacent to Coppermine Rd. pull-off near Stevenson Dam, Oxford, CT. Replaced Vietnamese, Cambodian, Lao, Hmong sign on same tree



Site Name:
 Coppermine Rd Pulloff

Site Location:
 112

Date Photograph Taken:
 June 20, 2023

Comments:
 Found English and Spanish signs on tree adjacent to Coppermine Rd. pull-off near Stevenson Dam, Oxford, CT. Replaced Vietnamese, Cambodian, Lao, Hmong sign on same tree

PHOTOGRAPH LOG

Housatonic River
 2023 Biota Consumption Advisory Sign Maintenance
 Housatonic Rest of River - Connecticut



Site Name:
 Roosevelt Dr First Light Pull-off

Site Location:
 113

Date Photograph Taken:
 June 20, 2023

Comments:
 Replaced English, Spanish, and Vietnamese, Cambodian, Lao, Hmong signs on tree along trail from First Light Power pull-off area to Housatonic River, Roosevelt Dr (Rt. 34), Oxford, CT



Site Name:
 Roosevelt Dr First Light Pull-off

Site Location:
 114

Date Photograph Taken:
 June 20, 2023

Comments:
 Replaced English, Spanish, and Vietnamese, Cambodian, Lao, Hmong signs on tree along trail from First Light Power pull-off area to Housatonic River, Roosevelt Dr (Rt. 34), Oxford, CT

PHOTOGRAPH LOG

Housatonic River
 2023 Biota Consumption Advisory Sign Maintenance
 Housatonic Rest of River - Connecticut



Site Name:
 Stevenson Dam Recreational area

Site Location:
 115

Date Photograph Taken:
 June 20, 2023

Comments:
 Found English, Spanish, and Vietnamese, Cambodian, Lao, Hmong signs on kiosk at Housatonic River Project Recreational Area, adjacent to Stevenson Dam off of Rt. 34, downstream side of Dam, Monroe, CT



Site Name:
 Stevenson Dam Recreational area

Site Location:
 116

Date Photograph Taken:
 June 20, 2023

Comments:
 Found English, Spanish, and Vietnamese, Cambodian, Lao, Hmong signs on kiosk at Housatonic River Project Recreational Area, adjacent to Stevenson Dam off of Rt. 34, downstream side of Dam, Monroe, CT

PHOTOGRAPH LOG

Housatonic River
 2023 Biota Consumption Advisory Sign Maintenance
 Housatonic Rest of River - Connecticut



Site Name:
 Indian Wells Boat Launch

Site Location:
 117

Date Photograph Taken:
 June 20, 2023

Comments:
 Found English, Spanish, and Vietnamese, Cambodian, Lao, Hmong signs on kiosk at Indian Well State Park boat launch, Rt. 454, Shelton CT



Site Name:
 Indian Wells Boat Launch

Site Location:
 118

Date Photograph Taken:
 June 20, 2023

Comments:
 Found English, Spanish, and Vietnamese, Cambodian, Lao, Hmong signs on kiosk at Indian Well State Park boat launch, Rt. 454, Shelton CT

PHOTOGRAPH LOG

Housatonic River
 2023 Biota Consumption Advisory Sign Maintenance
 Housatonic Rest of River - Connecticut



Site Name:
 Across from Osbornedale State Park

Site Location:
 119

Date Photograph Taken:
 June 20, 2023

Comments:
 Found English, Spanish, and Vietnamese, Cambodian, Lao, Hmong signs on telephone pole off of Rt. 34, adjacent to Pink House Cove Ice Fishing Area, on Housatonic River, Derby, CT. Removed vines that were growing on telephone pole and covering signs



Site Name:
 Pink House Cove

Site Location:
 120

Date Photograph Taken:
 June 20, 2023

Comments:
 Found English, Spanish, and Vietnamese, Cambodian, Lao, Hmong signs on telephone pole off of Rt. 34, adjacent to Pink House Cove Ice Fishing Area, on Housatonic River, Derby, CT. Removed vines that were growing on telephone pole and covering signs

PHOTOGRAPH LOG

Housatonic River
 2023 Biota Consumption Advisory Sign Maintenance
 Housatonic Rest of River - Connecticut



Site Name:
 Maples Boat Launch

Site Location:
 121

Date Photograph Taken:
 June 20, 2023

Comments:
 Found both English and Spanish signs on wood post at Maples Boat Launch in Shelton CT. On The Maples Rd., off Indian Well Road, off Rt. 110



Site Name:
 Riverside Park

Site Location:
 122

Date Photograph Taken:
 June 20, 2023

Comments:
 Found both English and Spanish signs on railing post at top of steps to river edge, just downstream of Derby Dam, Shelton, CT

PHOTOGRAPH LOG

Housatonic River
 2023 Biota Consumption Advisory Sign Maintenance
 Housatonic Rest of River - Connecticut



Site Name:
 Derby Dam Area

Site Location:
 123

Date Photograph Taken:
 June 20, 2023

Comments:
 Found English, Spanish, and Vietnamese, Cambodian, Lao, Hmong signs on kiosk for Derby Dam in Derby, CT



Site Name:
 Derby Dam Area

Site Location:
 124

Date Photograph Taken:
 June 20, 2023

Comments:
 Found English, Spanish, and Vietnamese, Cambodian, Lao, Hmong signs on kiosk for Derby Dam in Derby, CT

PHOTOGRAPH LOG

Housatonic River
2023 Biota Consumption Advisory Sign Maintenance
Housatonic Rest of River - Connecticut



Site Name:
Hawkins Point

Site Location:
125

Date Photograph Taken:
June 20, 2023

Comments:
Found both signs on telephone pole at O' Sullivan's Island Recreation Park and the Derby Greenway, Derby CT

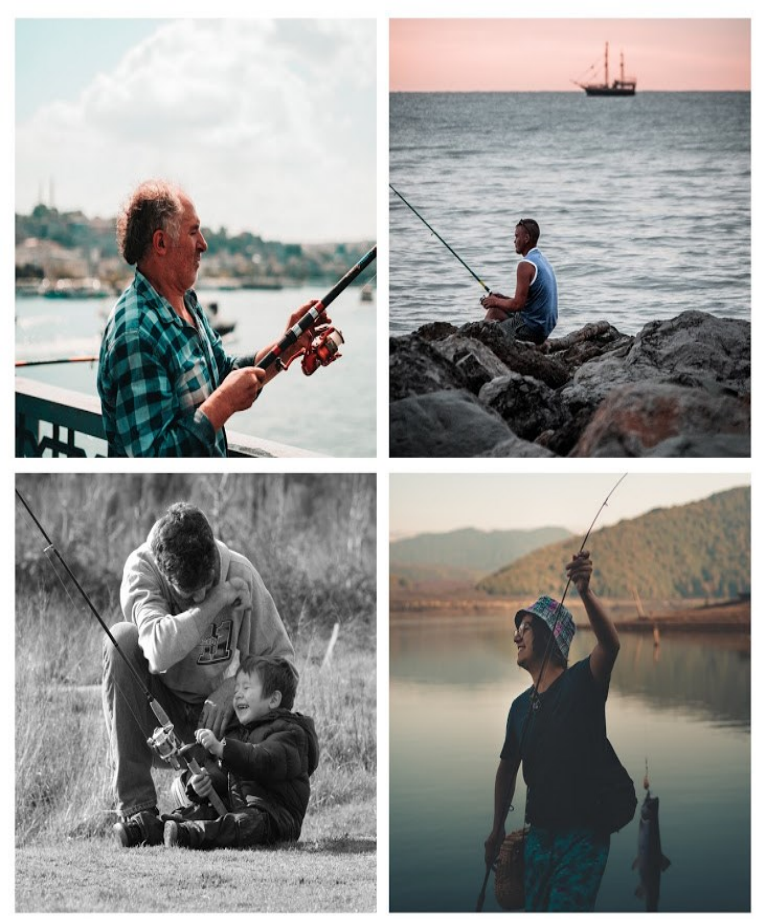
Attachment C

2022 Connecticut Fish Consumption Advisory Pamphlet



If I Catch It, Can I Eat It?

A Guide to Eating Fish Safely 2022 Connecticut Fish Consumption Advisory



<https://portal.ct.gov/fish>
1-877-458-FISH (3474)

This pamphlet will give you information that will help your family avoid chemicals in fish and eat fish safely.

Fish from Connecticut's waters are a healthy, low-cost source of protein. Unfortunately, some fish take up chemicals such as mercury and polychlorinated biphenyls (PCBs). These chemicals can build up in your body and increase health risks. The developing fetus and young children are most sensitive. Women who eat fish containing these chemicals before or during pregnancy or nursing may have children who are slow to develop and learn. Long term exposure to PCBs may increase cancer risk.

What Does The Fish Consumption Advisory Say?

The advisory tells you how often you can safely eat fish from Connecticut's waters and from a store or restaurant. In many cases, separate advice is given for the **High Risk** and **Low Risk** Groups.

- You are in the **High Risk Group** if you are a *pregnant woman, a woman who could become pregnant, a nursing mother, or a child under six.*
- If you do not fit into the High Risk Group, you are in the **Low Risk Group.**

Advice is given for three different types of fish consumption:

1. **Statewide FRESHWATER Fish Advisory:** Most freshwater fish in Connecticut contain enough mercury to cause some limit to consumption. The statewide freshwater advice is that:

- High Risk Group: eat no more than 1 meal per month
- Low Risk Group: eat no more than 1 meal per week

2. **Advisories for SPECIFIC WATERBODIES:** Certain waterbodies contain fish with higher levels of contaminants. These waterbodies include the Housatonic River, part of the Quinnipiac River, certain lakes, and certain species from Long Island Sound. The large chart in the center of this pamphlet provides details on eating fish safely from these waterbodies.

3. **Advice for Fish Purchased from the MARKET:** Most fish from the market are healthy to eat and contain important nutrients such as omega-3 fatty acids. However, there are some fish that contain high levels of mercury or PCBs and so should be eaten less or not at all. This pamphlet points out which fish are healthy to eat and which ones are not safe to eat (small chart on page 3).

Are Trout Safe To Eat?

Most trout from Connecticut's rivers are safe to eat because they usually have little contamination and are routinely re-stocked. However, there are limits on trout from certain waterbodies due to PCBs and on large trout from lakes due to mercury (see large chart in center).

How Do These Contaminants Get Into Fish?

Mercury, PCBs and per- and polyfluoroalkyl substances (PFAS) can build up in fish to levels that are thousands of times higher than in the water. These contaminants enter the water from:

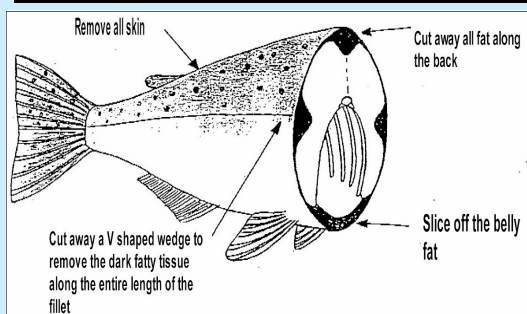
- Chemical spills that happened in the past.** Even though these spills have been stopped, it will take years for the mercury or PCB levels in the fish to drop to safe levels.
- Mercury in the air.** Mercury travels long distances from where it is released. Much of it comes from air pollution outside of Connecticut.

The Connecticut Department of Energy and Environmental Protection (CT DEEP) is working to improve water quality in Connecticut and is limiting the amount of mercury which can be released into the air.

What Else Can I Do To Eat Fish Safely?

PCBs are mostly in the fatty portions of fish. It is very important to remove skin and other fatty parts. Cook fish on a rack (broil) so that fat can drip away from the flesh.

Remove fatty portions before cooking



Remove and do not eat the organs, head, skin and the dark fatty tissue along the back bone, lateral lines and belly.

Mercury is in the edible (fillet) portion of fish. Therefore, you cannot lower your exposure to mercury by cooking or cleaning the fish. Large fish usually have the highest levels of PCBs and mercury. If you have a choice, eat smaller fish of any species. In addition, certain smaller species generally have lower levels of contamination (perch, small trout, sunfish).

What About Fish from Markets and Restaurants?

Many fish from the market or restaurant are low in contaminants. Some of these fish are also high in omega-3 fatty acids, a nutrient oil from fish that improves brain development and helps prevent heart disease. However, some fish from the market can contain high levels of certain contaminants, especially mercury.

In general, people in the High Risk Group can eat up to 2 fish meals a week from the market or at restaurants. Certain fish are especially low in contaminants and can be eaten more often. The following are specific tips for those in the **High Risk** Group to choose healthy fish from the store:

- Swordfish and Shark:** these contain high levels of mercury and **should not be eaten.**
- Canned tuna:** Choose "light" tuna because it has less mercury than "white" tuna.
- Lobster and other shellfish** are generally low in chemical contaminants. The tomalley portion of lobster (the green gland) can be high in contaminants and should not be eaten. This applies to lobster from Long Island Sound and elsewhere.

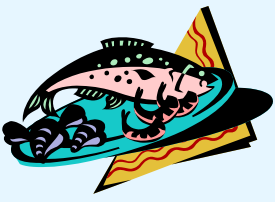
Fish from the Market and Restaurant

The chart below provides general guidance for **Women & Children** on which fish to choose. Fish with hearts are ♥ either especially high in omega-3 fatty acids and/or very low in contaminants and can be eaten more than twice a week.

Eat 2 Meals a Week		Eat 1 Meal a Week		Avoid
Herring ♥	Trout ♥	Tuna Steak		Swordfish
Pollock ♥	Haddock	Halibut		Shark
Salmon (wild) ♥	Perch	Red Snapper		King Mackerel
Atlantic Mackerel ♥	Tilapia	White Tuna (canned)		Striped Bass
Flounder & Fluke ♥	Light tuna (canned)	Catfish (farm-raised)		Tilefish (Gulf of Mexico)
Sole ♥	Cod	Tilefish (Atlantic)		Bluefish
Sardines & Smelt ♥	Salmon (farm-raised)			Tuna Sushi
Shellfish: oysters, shrimp, clams, scallops, lobster *		* see warning above about lobster tomalley		

People in the **Low Risk** Group can safely eat higher amounts of market seafood. For example, swordfish or shark - once per month; tuna steak or halibut - twice per week.





2022 Connecticut Safe Fish Consumption

REMEMBER

Follow this advisory to make sure the fish you choose to eat are safe for your family.

- Every fresh waterbody has some consumption limits as indicated at the top of the chart.
- *Long Island Sound*: Most fish are safe to eat except for listed restrictions on striped bass, bluefish, and weakfish.
- Be aware of advice for fish from the market or restaurant. See market advice on page 3.
- Your exposure to PCBs in fish can be reduced by trimming away fat and cooking fish on a rack so that fat drips away.

WHERE CAN I GET MORE INFORMATION?

More specific fact sheets can be obtained by calling 1-877-458-FISH (3474), or by going to the DPH WEB SITE: <https://portal.ct.gov/fish>

Health Questions?

Call CT DPH toll-free at: **1-877-458-FISH (3474)**

Questions about fishing in Connecticut?

Call CT DEEP at 860-424-3474.

www.ct.gov/deep/fishing

Footnotes from Table:

a. The **High Risk Group** includes pregnant women, women who could become pregnant, nursing women, and children under age 6.

The **High Risk Group** should eat no more than one fish meal per month of most freshwater fish from local waters

b. The **Low Risk Group** should limit eating most freshwater fish to once a week.

c. Most trout are not part of the advisory and are safe to eat. However, the high risk group should eat no more than one meal of large trout (over 15") per month and should not eat trout from the Housatonic River.

d. The Natchaug River from the dam at the Willimantic Reservoir (northern boundary) downstream to where it forms the Shetucket River. The advisory extends a 1/2 mile down the Shetucket River to Plains Road. Willimantic River from where it meets the Shetucket and Natchaug Rivers upstream to the dam at Pine Street.

e. Hockanum River from the outlet of Shenipsit Lake (Tolland Ave., Vernon) to the Connecticut River, including several riverine impoundments of Papermill Pond, including Pitney Park (Vernon), Union Pond (Manchester), small impoundments and ponds (East Hartford) and the Tankerhoosen River (upstream to dam at Main Street, Vernon)

f. Snappers (bluefish under 13") are not on the advisory because they have very low contamination.

STATEWIDE FRESHWATER FISH ADVICE

Waterbody	Fish Species	High Risk Group ^a	Low Risk Group ^b	Contaminant
<i>All fresh lakes, ponds, rivers & streams</i>	Trout ^e Sunfish	No Limits on Consumption	No Limits on Consumption	--
	All other freshwater fish	One meal per month	One meal per week	Mercury

SPECIAL ADVICE FOR THE HOUSATONIC RIVER AREA

Waterbody	Fish Species	High Risk Group ^a	Low Risk Group ^b	Contaminant
<i>Housatonic River above Lake Lillinonah</i>	Trout, Catfish, Eels, Carp, Northern Pike	Do not eat	Do not eat	PCBs
	Bass, White Perch	Do not eat	One meal per 2 months	PCBs
	Bluegill, Bullheads, Fallfish	One meal per month	One meal per month	PCBs
	Yellow Perch, Calico Bass (Crappie), Rock Bass & Sunfish	One meal per month	One meal per week	PCBs
<i>Lakes on Housatonic River: (Lillinonah, Zoar, Housatonic)</i>	Catfish, Eels, Carp, Northern Pike, Trout	Do not eat	Do not eat	PCBs
	White Perch, Fallfish, Bullheads	One meal per month	One meal per month	PCBs
	Bass	Do not eat	One meal per 2 months	PCBs
	Yellow Perch, Calico Bass (Crappie), Rock Bass, Bluegill & Sunfish	One meal per month	One meal per week	PCBs
<i>Furnace Brook (Cornwall)</i>	Trout	One meal per month	One meal per month	PCBs
<i>Blackberry River below "Blast Furnace" (North Canaan)</i>	Smallmouth Bass	One meal per month	One meal per month	PCBs

SPECIAL ADVICE FOR OTHER CT FRESH WATERBODIES

Waterbody	Fish Species	High Risk Group ^a	Low Risk Group ^b	Contaminant
<i>Dodge Pond Lake McDonough Silver Lake Wyassup Lake</i>	Largemouth Bass, Smallmouth Bass, Pickerel	Do not eat	One meal per month	Mercury
<i>Quinnipiac River (Gorge south to Hanover Pond) Meriden</i>	All Species	One meal per month	One meal per month	PCBs
<i>Connecticut River</i>	Catfish	One meal per month	One meal per week	PCBs
<i>Versailles, Papermill Ponds & attached Little River (Sprague)</i>	All Species	Do not eat	Do not eat	Mercury PCBs
<i>Konkapot River (North Canaan)</i>	White Suckers	Do not eat	One meal per month	Mercury
<i>Brewster Pond (Stratford)</i>	Catfish & Bullheads	Do not eat	Do not eat	Chlordane
<i>Union Pond (Manchester)</i>	Carp, Catfish, Bass	Do not eat	Do not eat	Chlordane
<i>Natchaug, Willimantic and Shetucket Rivers^d (Willimantic & Mansfield)</i>	Bass	One meal per month	One meal per month	PFAS
<i>Hockanum River^e (Vernon, Ellington, Manchester, & East Hartford)</i>	All Species	Do not eat	Do not eat	PFAS

SPECIAL ADVICE FOR LONG ISLAND SOUND

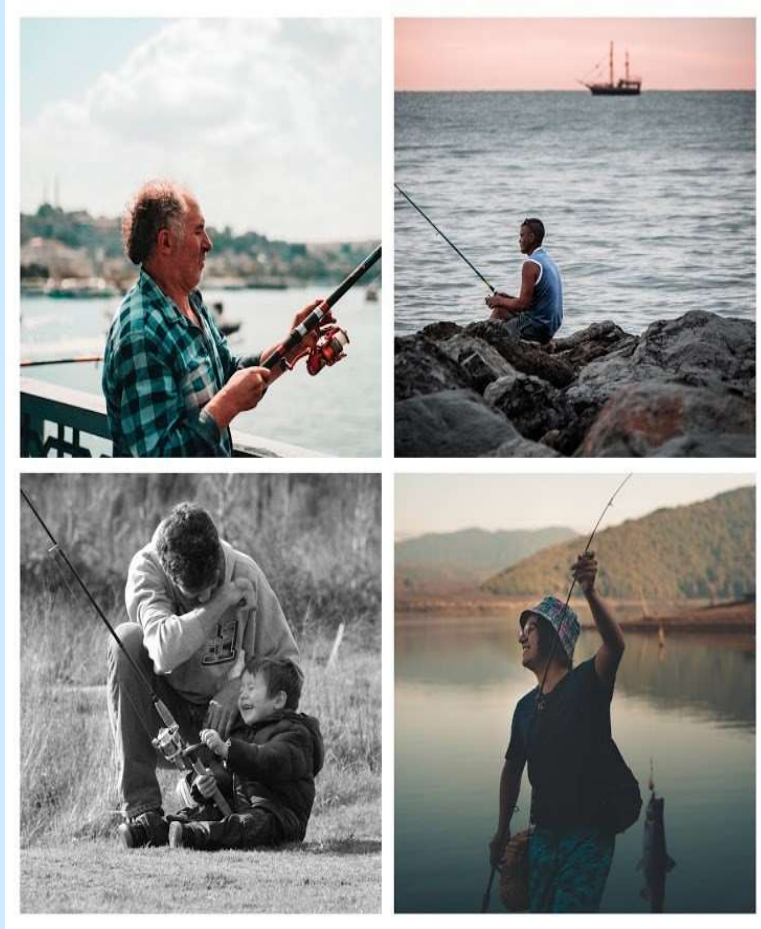
Waterbody	Fish Species	High Risk Group ^a	Low Risk Group ^b	Contaminant
<i>Long Island Sound and connected rivers</i>	Striped Bass Bluefish over 25"	Do not eat Do not eat	One meal per month One meal per month	PCBs PCBs
	Bluefish 13- 25 " ^f Weakfish	One meal per month One meal per month	One meal per month One meal per month	PCBs PCBs
<i>Mill River, Fairfield [excluding Southport Harbor]</i>	Blue Crab	Do not eat	Do not eat	Lead



¿Si lo atrapo, puedo comerlo?

Guía para el Consumo Seguro de Pescado

Asesoría de Consumo de Pescado Connecticut 2022



<https://portal.ct.gov/fish>
1-877-458-FISH (3474)

Este folleto le proporcionará información que ayudará a su familia a evitar los productos químicos en el pescado y a comerlo de forma segura.

Los peces de las aguas de Connecticut son una fuente de proteína saludable y de bajo costo. Desafortunadamente, algunos peces ingieren sustancias químicas como el mercurio y los bifenilos policlorados (PCB). Estos productos químicos pueden acumularse en el cuerpo y aumentar los riesgos para la salud. Los fetos en desarrollo y los niños pequeños son más sensibles. Las mujeres que consumen pescados que contienen estas sustancias químicas, antes o durante el embarazo o la lactancia pueden tener hijos con problemas de desarrollo y de aprendizaje. La exposición a largo plazo a los PCB puede aumentar el riesgo de cáncer.

¿Qué dice la Asesoría de Consumo de Pescado?

La asesoría le indica con qué frecuencia puede comer pescado en muchas aguas de Connecticut, y de una tienda o restaurante, de forma segura. En muchos casos, se dan consejos distintos para los grupos de **Alto Riesgo** y **Bajo Riesgo**.

- Usted está en el **Grupo de Alto Riesgo** si es una mujer embarazada, una mujer que podría quedar embarazada, una madre lactante o un niño menor de seis años.
- Si no eres parte del grupo de Alto Riesgo, entonces eres parte del **Grupo de Bajo Riesgo**.

Se aconseja para tres tipos diferentes de consumo de pescado:

1. **Consejos estatales sobre el pescado de AGUA DULCE:** La mayoría de los peces de agua dulce de Connecticut contienen suficiente mercurio para limitar el consumo. El consejo para agua dulce del estado es:

- Grupo de Alto Riesgo: no consumir más de 1 comida al mes
- Grupo de Bajo Riesgo: no consumir más de 1 comida por semana

2. **Consejos para CUERPOS DE AGUA ESPECÍFICOS:** Algunas masas de agua contienen peces con niveles más altos de contaminantes. Estos cuerpos de agua incluyen el Río Housatonic, parte del Río Quinnipiac, algunos lagos y ciertas especies de Long Island Sound. El gráfico grande en el centro de este folleto proporciona detalles sobre cómo comer pescado de estas masas de agua de forma segura.

3. **Consejos para pescado comprado en el MERCADO:** La mayoría de los pescados del mercado son saludables y contienen nutrientes importantes, como los ácidos grasos omega-3. Sin embargo, hay algunos peces que contienen altos niveles de mercurio o PCB, por lo que deben consumirse menos o evitar. Este folleto señala qué pescados son saludables para comer y cuáles no son seguros (pequeña tabla en la página 3).

¿Es seguro comer Truchas?

La mayoría de las truchas de los ríos de Connecticut son seguras para comer porque usualmente tienen poca contaminación y se reabastecen rutinariamente. Sin embargo, existen límites para la trucha de ciertas masas de agua debido a los PCB y para las truchas grandes de los lagos debido al mercurio (ver gráfico grande en el centro).

Página
1

¿Cómo entran estos contaminantes en los peces?

El mercurio, los PCB y las sustancias per y polifluoroalquilo (PFAS) pueden acumularse en los peces a niveles que son miles de veces mayores a los del agua. Estos contaminantes entran en el agua por:

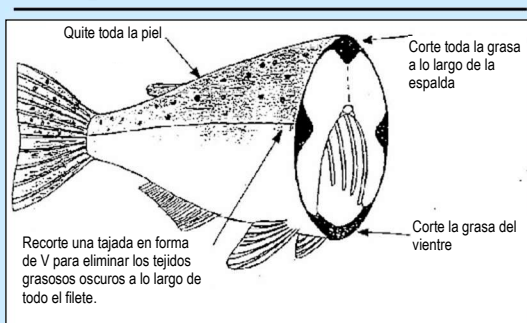
- **Derrames químicos que ocurrieron en el pasado.** Aunque estos derrames se hayan detenido, toma muchos años para que los niveles de mercurio y PCBs en los peces bajen a niveles seguros.
- **Mercurio en el aire.** El mercurio viaja largas distancias desde donde se libera. Gran parte proviene de la contaminación atmosférica fuera de Connecticut.

El Departamento de Energía y Protección Ambiental de Connecticut (CT DEEP) está trabajando para mejorar la calidad del agua en Connecticut y está limitando la cantidad de mercurio que se puede liberar en el aire.

¿Qué más puedo hacer para comer pescado de forma segura?

Los PCB se encuentran principalmente en las partes grasosas del pescado. Es muy importante eliminar la piel y otras partes grasosas. Cocine el pescado en una parrilla (asador) para que la grasa pueda gotear de la carne.

Retire las porciones grasosas antes de cocinar



Retire y no coma los órganos, la cabeza, la piel y los tejidos grasosos oscuros a lo largo de la espina dorsal, las líneas laterales y el vientre.

El mercurio se encuentra en la porción comestible (filete) del pescado. Por lo tanto, no se puede reducir la exposición al mercurio cocinando o limpiando el pescado. Los peces grandes usualmente tienen los niveles más altos de PCB y mercurio. Si tiene la opción, coma peces más pequeños de cualquier especie. Además, algunas especies más pequeñas usualmente tienen niveles de contaminación más bajos (perca, trucha pequeña, pez sol).

Página 2

¿Qué pasa con el pescado de mercados y restaurantes?

Muchos pescados del mercado o del restaurante son bajos en contaminantes. Algunos de estos pescados también tienen un alto contenido de ácidos grasos omega-3, un aceite nutritivo de pescado que mejora el desarrollo cerebral y ayuda a prevenir las enfermedades cardíacas. Sin embargo, algunos pescados del mercado pueden contener altos niveles de ciertos contaminantes, especialmente mercurio.

En general, las personas del **Grupo de Alto Riesgo** pueden comer hasta 2 comidas de pescado a la semana en el mercado o en los restaurantes. Algunos peces tienen un contenido especialmente bajo de contaminantes y se pueden comer con más frecuencia. Los siguientes son consejos específicos para que los miembros del **Grupo de Alto Riesgo** elijan pescados saludables en la tienda:

- Pez Espada y Tiburón: contienen altos niveles de mercurio y **no deben comerse**.
- Atún enlatado: Elige atún «claro» porque tiene menos mercurio que el atún «blanco».
- La langosta y otros mariscos son generalmente bajos en contaminantes químicos. El tomalley de la langosta (la glándula verde) puede tener un alto contenido de contaminantes y no debe comerse. Esto se aplica a la langosta de Long Island Sound y de otros lugares.

Pescado del mercado y restaurante

La siguiente tabla es un guía general para **Las Mujeres y Los Niños** sobre qué peces elegir. Los pescados con corazones **♥** son especialmente altos en ácidos grasos omega-3 y/o muy bajos en contaminantes y pueden consumirse más de dos veces por semana.

Comer 2 veces por semana		Comer 1 vez por semana		Evitar
Arenque ♥	Trucha ♥	Filete de atún		Pez espada
Abadejo ♥	Eglefino	Fletán		Tiburón
Salmón (salvaje) ♥	Perca	Pargo rojo		Caballa real
Caballa ♥	Tilapia	Atún blanco (enlatado)		Bajo rayado
Platija de verano ♥	Atún claro (enlatado)	Bagre (criado en granja)		Blanquillos (Golfo de México)
Lenguado ♥	Bacalao	Blanquillos (Atlántico)		Anjova
Sardinas & Eperlanos ♥	Salmón (criado en granja)			Sushi de atún
Mariscos: Ostras, camarones, almejas, vieiras, langosta *		* Ver advertencia arriba sobre el tomalley de langosta		

Las personas del **Grupo de Bajo Riesgo** pueden comer con seguridad mayores cantidades de mariscos del mercado. Por ejemplo, pez espada o tiburón, una vez al mes; bistec de atún o fletán, dos veces por semana.

Página 3





Consumo Seguro Pescado de Connecticut 2022

RECUERDE

Sigue este aviso para asegurarte que el pescado que elijas comer sea seguro para tu familia.

- Cada cuerpo de agua dulce tiene algunos límites de consumo, como se indica en la parte superior de la tabla.
- *Long Island Sound*: La mayoría de los peces son seguros para comer excepto por las restricciones indicadas sobre el bajo rayado, la anjova y corvinas.
- Tenga en cuenta los consejos para el pescado del mercado o del restaurante. Vea los consejos de mercado en la página 3.
- La exposición a los PCB en el pescado se puede reducir recortando la grasa y cocinando el pescado en una parrilla para que la grasa escurra.

¿DÓNDE PUEDO OBTENER MÁS INFORMACIÓN?

Se pueden obtener datos más específicos llamando al 1-877-458-FISH (3474) o yendo al SITIO WEB de DPH: <https://portal.ct.gov/fish>

¿Tiene preguntas de salud? Llame gratis a CT DPH a: **1-877-458-FISH (3474)**

¿Tiene preguntas sobre la pesca en Connecticut? Llame a CT DEEP al 860-424-3474. www.ct.gov/deep/fishing

Notas al pie de la tabla:

- a. El **Grupo de Alto Riesgo** incluye mujeres embarazadas, mujeres que podrían quedar embarazadas, mujeres lactantes y niños menores de 6 años. El **Grupo de Alto Riesgo** no debe comer más de una comida de pescado al mes de la mayoría de los peces de agua dulce de aguas locales.
- b. El **Grupo de Bajo Riesgo** debería limitar el consumo de la mayoría de los peces de agua dulce a una vez por semana.
- c. La mayoría de las truchas no forman parte de esta advertencia y son seguras para comer. Sin embargo, el grupo de Alto Riesgo no debe comer más de una comida de trucha grande (más de 15") al mes y no debe comer trucha del Río Housatonic.
- d. El Río Natchaug desde la presa del Embalse Willimantic (límite norte) aguas abajo hasta donde forma el Río Shetucket. El consejo se extiende 1/2 milla por el Río Shetucket hasta Plains Road. El Río Willimantic desde donde se encuentra con Los Ríos Shetucket y Natchaug río arriba hasta la presa de Pine Street.
- e. El Río Hockanum de la salida de Lago Shenipsit (Avenida Tolland, Vernon) al Río Connecticut, incluyendo varios embalses y estanques (East Hartford) y el Río Tankerhoosen (aguas arriba de la presa en Main Street, Vernon).
- f. Los pargos (peces azules menores de 13") no están en el aviso porque tienen una contaminación muy baja.

Esta hoja informativa está financiada en parte con fondos del Programa de Seguimiento de Salud Pública Ambiental de CT y Ley de Respuesta Ambiental Exhaustiva, Compensación y Responsabilidad y a través de un acuerdo cooperativo con la Agencia para el Registro de Sustancias Tóxicas y Enfermedades, Servicio de Salud Pública y el Departamento de Salud y Servicios Humanos.

CONSEJOS DEL ESTADO SOBRE PECES DE AGUA DULCE

Cuerpo de agua	Especies de peces	Grupo de Alto Riesgo ^a	Grupo de Bajo Riesgo ^b	Contaminante
<i>Todos los lagos, estanques, ríos y arroyos frescos</i>	Trucha ^c Pez Sol	Sin límites de consumo	Sin límites de consumo	--
	Todos los demás peces de agua dulce	Una comida al mes	Una comida por semana	Mercurio

CONSEJOS ESPECIALES PARA LA ZONA DEL RÍO HOUSATONIC

Cuerpo de agua	Especies de peces	Grupo de Alto Riesgo ^a	Grupo de Bajo Riesgo ^b	Contaminante
<i>Río Housatonic sobre el Lago Lillinonah</i>	Trucha, Siluro, Anguilas, Carpa, Lucio del Norte	No comer	No comer	PCB
	Lubina, Perca blanca	No comer	Una comida cada 2 meses	PCB
	Agalla Azul, Bullheads, Fallfish	Una comida al mes	Una comida al mes	PCB
	Perca Amarilla, Cabrilla Sargacera (Crappie), Bajo de Roca & Pez Sol	Una comida al mes	Una comida por semana	PCB
<i>Lagos en el Río Housatonic: (Lillinonah, Zoar, Housatonic)</i>	Siluro, Anguilas, Carpa, Lucio del Norte, Trucha	No comer	No comer	PCB
	Perca Blanca, Fallfish, Cabeza del Toro	Una comida al mes	Una comida al mes	PCB
	Lubina	No comer	Una comida cada 2 meses	PCB
	Perca Amarilla, Cabrilla Sargacera (Crappie), Bajo de Roca, Agalla Azul y Pez Sol	Una comida al mes	Una comida por semana	PCB
<i>Furnace Brook (Cornwall)</i>	Trucha	Una comida al mes	Una comida al mes	PCB
<i>Río Blackberry debajo del «Blast Furnace» (North Canaan)</i>	Lobina de Boca Chica	Una comida al mes	Una comida al mes	PCB

CONSEJOS ESPECIALES PARA OTROS CUERPOS DE AGUA FRESCOS DE CT

Cuerpo de Agua	Especies de Peces	Grupo de Alto Riesgo ^a	Grupo de Bajo Riesgo ^b	Contaminante
<i>Estanque Dodge Lago McDonough Lago Silver Lago Wyassup</i>	Lobina de Boca Grande, Lobina de Boca Chica, Lucio	No comer	Una comida al mes	Mercurio
<i>Río Quinnipiac (Garganta Sur hasta estanque Hanover) Meriden</i>	Todas las especies	Una comida al mes	Una comida al mes	PCB
<i>Río Connecticut</i>	Siluro	Una comida al mes	Una comida por semana	PCB
<i>Versailles, Estanque Papermill & Lago Little (Sprague)</i>	Todas las especies	No comer	No comer	Mercurio PCB
<i>Río Konkapot (North Canaan)</i>	Ventosa Blanca	No comer	Una comida al mes	Mercurio
<i>Estanque Brewster (Stratford)</i>	Siluro y Cabeza de Toro	No comer	No comer	Clordano
<i>Estanque Union (Manchester)</i>	Carpa, Siluro, Lubina	No comer	No comer	Clordano
<i>Ríos Natchaug, Willimantic y Shetucket^d (Willimantic y Mansfield)</i>	Lubina	Una comida al mes	Una comida al mes	PFAS
<i>Río Hockanum^e (Vernon, Ellington, Manchester y East Hartford)</i>	Todas las especies	No comer	No comer	PFAS

CONSEJOS ESPECIALES PARA LONG ISLAND SOUND

Cuerpo de agua	Especies de peces	Grupo de Alto Riesgo ^a	Grupo de Bajo Riesgo ^b	Contaminante
<i>Long Island Sound y ríos conectados</i>	Lubina Rayada Anjova Pez Azul a más de 25"	No comer No comer	Una comida al mes Una comida al mes	PCB PCB
	Anjova Azul 13 - 25 " f Pescadillas	Una comida al mes Una comida al mes	Una comida al mes Una comida al mes	PCB PCB
<i>Río Mill, Fairfield [excluido Southport Harbor]</i>	Cangrejo Azul	No comer	No comer	Plomo

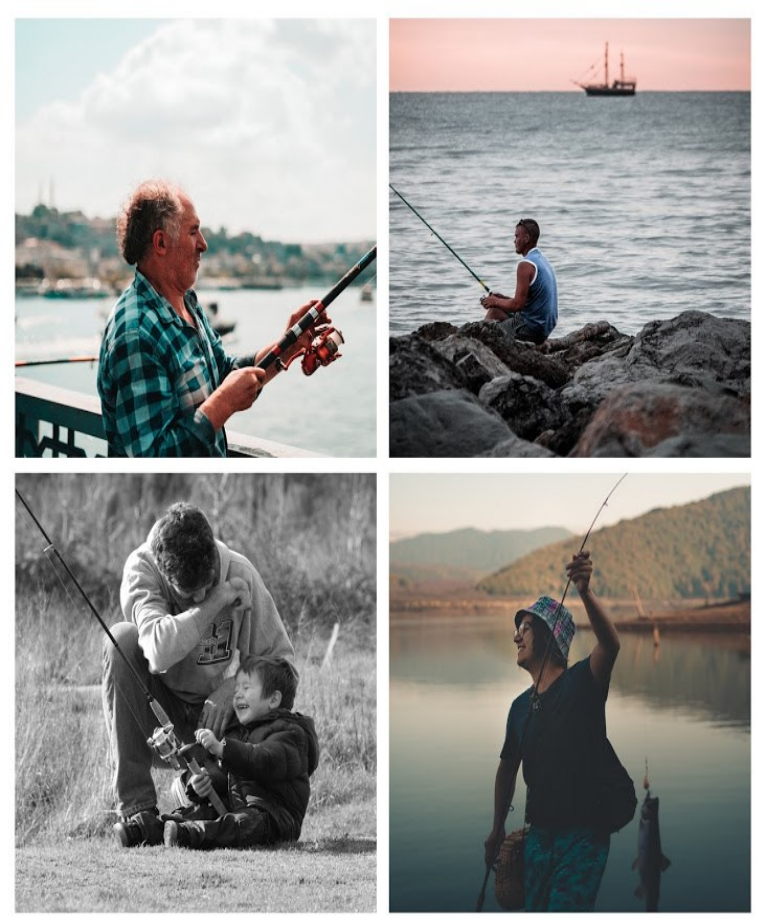
Attachment D

2023 Connecticut Fish Consumption Advisory Pamphlet



If I Catch It, Can I Eat It?

A Guide to Eating Fish Safely 2023 Connecticut Fish Consumption Advisory



<https://portal.ct.gov/fish>
1-877-458-FISH (3474)

This pamphlet will give you information that will help your family avoid chemicals in fish and eat fish safely.

Fish from Connecticut's waters are a healthy, low-cost source of protein. Unfortunately, some fish take up chemicals such as mercury, perfluorooctane sulfonic acid (PFOS) and polychlorinated biphenyls (PCBs). These chemicals can build up in your body and increase health risks. The developing fetus and young children are most sensitive. Women who eat fish containing these chemicals before or during pregnancy or nursing may have children who are slow to develop and learn. Long term exposure to PCBs may increase cancer risk.

What Does The Fish Consumption Advisory Say?

The advisory tells you how often you can safely eat fish from Connecticut's waters and from a store or restaurant. In many cases, separate advice is given for the **High Risk** and **Low Risk** Groups.

- You are in the **High Risk Group** if you are a *pregnant woman, a woman who could become pregnant, a nursing mother, or a child under six.*
- If you do not fit into the High Risk Group, you are in the **Low Risk Group.**

Advice is given for three different types of fish consumption:

1. **Statewide FRESHWATER Fish Advisory:** Most freshwater fish in Connecticut contain enough mercury to cause some limit to consumption. The statewide freshwater advice is that:

- High Risk Group: eat no more than 1 meal per month
- Low Risk Group: eat no more than 1 meal per week

2. **Advisories for SPECIFIC WATERBODIES:** Certain waterbodies contain fish with higher levels of contaminants. These waterbodies include the Housatonic River, as well as other rivers, lakes, and ponds, and certain species from Long Island Sound. The large chart in the center of this pamphlet provides details on eating fish safely from these waterbodies.

3. **Advice for Fish Purchased from the MARKET:** Most fish from the market are healthy to eat and contain important nutrients such as omega-3 fatty acids. However, there are some fish that contain high levels of mercury or PCBs and so should be eaten less or not at all. This pamphlet points out which fish are healthy to eat and which ones are not safe to eat (small chart on page 3).

Are Trout Safe To Eat?

Most trout from Connecticut's rivers are safe to eat because they usually have little contamination and are routinely re-stocked. However, there are limits on trout from certain waterbodies due to PCBs and PFOS and on large trout from lakes due to mercury (see large chart in center).

How Do These Contaminants Get Into Fish?

Mercury, PCBs and PFOS can build up in fish to levels that are thousands of times higher than in the water. These contaminants enter the water from:

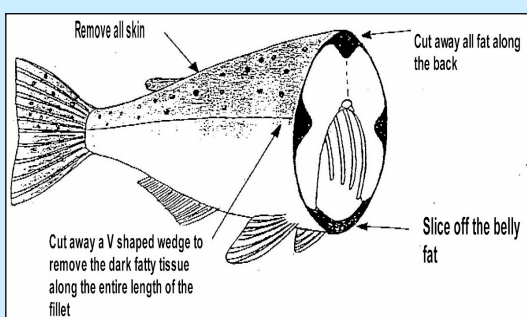
- Chemical spills that happened in the past.** Even though these spills have been stopped, it may take years for the contaminant levels in the fish to drop to safe levels.
- Mercury in the air.** Mercury travels long distances from where it is released. Much of it comes from air pollution outside of Connecticut.

The Connecticut Department of Energy and Environmental Protection (CT DEEP) is working to improve water quality in Connecticut and is limiting the amount of mercury which can be released into the air.

What Else Can I Do To Eat Fish Safely?

PCBs are mostly in the fatty portions of fish. It is very important to remove skin and other fatty parts. Cook fish on a rack (broil) so that fat can drip away from the flesh.

Remove fatty portions before cooking



Remove and do not eat the organs, head, skin and the dark fatty tissue along the back bone, lateral lines and belly.

Mercury is in the edible (fillet) portion of fish. Therefore, you cannot lower your exposure to mercury by cooking or cleaning the fish. Large fish usually have the highest levels of PCBs and mercury. If you have a choice, eat smaller fish of any species. In addition, certain smaller species generally have lower levels of contamination (perch, small trout, sunfish).

What About Fish from Markets and Restaurants?

Many fish from the market or restaurant are low in contaminants. Some of these fish are also high in omega-3 fatty acids, a nutrient oil from fish that improves brain development and helps prevent heart disease. However, some fish from the market can contain high levels of certain contaminants, especially mercury.

In general, people in the High Risk Group can eat up to 2 fish meals a week from the market or at restaurants. Certain fish are especially low in contaminants and can be eaten more often. The following are specific tips for those in the **High Risk** Group to choose healthy fish from the store:

- Swordfish and Shark: these contain high levels of mercury and **should not be eaten.**
- Canned tuna: Choose "light" tuna because it has less mercury than "white" tuna.
- Lobster and other shellfish are generally low in chemical contaminants. The tomalley portion of lobster (the green gland) can be high in contaminants and should not be eaten. This applies to lobster from Long Island Sound and elsewhere.

Fish from the Market and Restaurant

The chart below provides general guidance for Women & Children on which fish to choose. Fish with hearts are ♥ either especially high in omega-3 fatty acids and/or very low in contaminants and can be eaten more than twice a week.

Eat 2 Meals a Week		Eat 1 Meal a Week		Avoid
Herring ♥	Trout ♥	Tuna Steak	Swordfish	
Pollock ♥	Haddock	Halibut	Shark	
Salmon (wild) ♥	Perch	Red Snapper	King Mackerel	
Atlantic Mackerel ♥	Tilapia	White Tuna (canned)	Striped Bass	
Flounder & Fluke ♥	Light tuna (canned)	Catfish (farm-raised)	Tilefish (Gulf of Mexico)	
Sole ♥	Cod	Tilefish (Atlantic)	Bluefish	
Sardines & Smelt ♥	Salmon (farm-raised)		Tuna Sushi	
Shellfish: oysters, shrimp, clams, scallops, lobster *		* see warning above about lobster tomalley		

People in the **Low Risk** Group can safely eat higher amounts of market seafood. For example, swordfish or shark - once per month; tuna steak or halibut - twice per week.





2023 Connecticut Safe Fish

REMEMBER

Follow this advisory to make sure the fish you choose to eat are safe for your family.

- Every fresh waterbody has some consumption limits as indicated at the top of the chart.
- *Long Island Sound*: Most fish are safe to eat except for listed restrictions on striped bass, bluefish, and weakfish.
- Be aware of advice for fish from the market or restaurant. See market advice on page 3.
- Your exposure to PCBs in fish can be reduced by trimming away fat and cooking fish on a rack so that fat drips away.

WHERE CAN I GET MORE INFORMATION?

More specific fact sheets can be obtained by calling 1-877-458-FISH (3474), or by going to the DPH WEB SITE: <https://portal.ct.gov/fish>

Health Questions?

Call CT DPH toll-free at: **1-877-458-FISH (3474)**

Questions about fishing in Connecticut?

Call CT DEEP at 860-424-3474.
www.ct.gov/deep/fishing

Footnotes from Table:

a. The **High Risk Group** includes pregnant women, women who could become pregnant, nursing women, and children under age 6.

The **High Risk Group** should eat no more than one fish meal per month of most freshwater fish from local waters

b. The **Low Risk Group** should limit eating most freshwater fish to once a week.

c. Most trout are not part of any advisory and are safe to eat unless otherwise noted.

d. Includes the entire River as well as the West Branch Naugatuck River downstream of Stillwater Pond, Torrington.

e. The Housatonic River upstream to the Derby Dam and downstream to the Rt. 15 Bridge. Upstream on the Naugatuck River to the Kinneytown Dam.

f. Shad only travel to the Connecticut River to spawn, have low contamination and are not included in the advisory.

g. Upstream boundary is the Somersville Pond Dam.

h. The Natchaug River from the dam at the Willimantic Reservoir (northern boundary) downstream to where it forms the Shetucket River. The advisory extends a 1/2 mile down the Shetucket River to Plains Road. Willimantic River from where it meets the Shetucket and Natchaug Rivers upstream to the dam at Pine Street.

i. Hockanum River from the outlet of Shenipsit Lake (Tolland Ave., Vernon) to the Connecticut River, including several riverine impoundments of Papermill Pond, including Pitney Park (Vernon), Union Pond (Manchester), small impoundments and ponds (East Hartford) and the Tankerhoosen River (upstream to dam at Main Street, Vernon).

j. Downstream from the Rainbow Dam in the town of Windsor to the confluence with the Connecticut River.

k. Snappers (bluefish under 13") are not included in the advisory because they have very low contamination.

STATEWIDE FRESHWATER FISH ADVICE

Waterbody	Fish Species	High Risk Group ^a	Low Risk Group ^b	Contaminant
<i>All fresh lakes, ponds, rivers & streams</i>	Trout ^c Sunfish	No Limits on Consumption	No Limits on Consumption	--
	All other freshwater fish	One meal per month	One meal per week	Mercury

SPECIAL ADVICE FOR THE HOUSATONIC RIVER AREA

Waterbody	Fish Species	High Risk Group ^a	Low Risk Group ^b	Contaminant
<i>Housatonic River above Lake Lillinonah</i>	Trout, Catfish, Eel, Carp, Northern Pike	Do not eat	Do not eat	PCBs
	Bass, White Perch	Do not eat	One meal per 2 months	PCBs
	Bluegill, Bullhead, Fallfish	One meal per month	One meal per month	PCBs
	Yellow Perch, Calico Bass (Crappie), Rock Bass & Sunfish	One meal per month	One meal per week	PCBs
<i>Lakes on Housatonic River: (Lillinonah, Zoar, Housatonic)</i>	Catfish, Eel, Carp, Northern Pike, Trout	Do not eat	Do not eat	PCBs
	White Perch, Fallfish, Bullhead	One meal per month	One meal per month	PCBs
	Bass	Do not eat	One meal per 2 months	PCBs
	Yellow Perch, Calico Bass (Crappie), Rock Bass, Bluegill & Sunfish	One meal per month	One meal per week	PCBs
<i>Furnace Brook (Cornwall)</i>	Trout	One meal per month	One meal per month	PCBs
<i>Blackberry River below "Blast Furnace" (North Canaan)</i>	Smallmouth Bass	One meal per month	One meal per month	PCBs
<i>Naugatuck River^d</i>	Bass	One meal per month	One meal per month	PFOS
<i>Housatonic River at O'Sullivan's Island^e</i>	All	One meal per month	One meal per month	PFOS

SPECIAL ADVICE FOR OTHER CT FRESH WATERBODIES & LONG ISLAND

Waterbody	Fish Species	High Risk Group ^a	Low Risk Group ^b	Contaminant
<i>Dodge Pond Lake McDonough Silver Lake Wyassup Lake</i>	Largemouth Bass, Smallmouth Bass, Pickerel	Do not eat	One meal per month	Mercury
<i>Quinnipiac River (Gorge south of Meriden through Wallingford to Long Island Sound)</i>	All Species	One meal per month	One meal per month	PCBs, PFOS
<i>Versailles, Papermill Ponds & attached Little River (Sprague)</i>	All Species	Do not eat	Do not eat	Mercury, PCBs
<i>Connecticut River^f</i>	All Species Except for Shad	One meal per month	One meal per month	PCBs, PFOS
<i>Konkapot River (North Canaan)</i>	White Sucker	Do not eat	One meal per month	Mercury
<i>Brewster Pond (Stratford)</i>	Catfish & Bullhead	Do not eat	Do not eat	Chlordane
<i>Union Pond (Manchester)</i>	All Species	Do not eat	Do not eat	PFOS
<i>Still River (Winchester)</i>	Bass	One meal per month	One meal per month	PFOS
<i>Scantic River^g</i>	American Eel	One meal per month	One meal per month	PFOS
<i>Pequabuck River</i>	American Eel	One meal per month	One meal per month	PFOS
<i>Natchaug, Willimantic and Shetucket Rivers^h (Willimantic & Mansfield)</i>	Bass All Other Species	Do not eat One meal per month	Do not eat One meal per month	PFOS
<i>Hockanum & Tankerhoosen Riversⁱ (Vernon, Ellington, Manchester, & East Hartford)</i>	All Species	Do not eat	Do not eat	PFOS
<i>Lower Farmington River^j</i>	Yellow Perch & Bass	One meal per month	One meal per month	PFOS
<i>Long Island Sound & connected rivers</i>	Striped Bass Bluefish over 25" ^k	Do not eat Do not eat	One meal per month One meal per month	PCBs PCBs
	Bluefish 13-25" Weakfish	One meal per month One meal per month	One meal per month One meal per month	PCBs PCBs
<i>Mill River (Fairfield, excluding Southport Harbor)</i>	Blue Crab	Do not eat	Do not eat	Lead



¿Si lo atrapo, puedo comerlo?

Guía para el Consumo Seguro de Pescado

Asesoría de Consumo de Pescado Connecticut 2023



<https://portal.ct.gov/fish>
1-877-458-FISH (3474)

Este folleto le proporcionará información que ayudará a su familia a evitar los productos químicos en el pescado y a comerlo de forma segura.

Los peces de las aguas de Connecticut son una fuente de proteína saludable y de bajo costo. Desafortunadamente, algunos peces ingieren sustancias químicas como el mercurio, ácido perfluorooctano sulfónico (PFOS) y los bifenilos policlorados (PCB). Estos productos químicos pueden acumularse en el cuerpo y aumentar los riesgos para la salud. Los fetos en desarrollo y los niños pequeños son más sensibles. Las mujeres que consumen pescados que contienen estas sustancias químicas, antes o durante el embarazo o la lactancia pueden tener hijos con problemas de desarrollo y de aprendizaje. La exposición a largo plazo a los PCB puede aumentar el riesgo de cáncer.

¿Qué dice la Asesoría de Consumo de Pescado?

La asesoría le indica con qué frecuencia puede comer pescado de las aguas de Connecticut, y de una tienda o restaurante, de forma segura. En muchos casos, se dan consejos distintos para los grupos de **Alto Riesgo** y **Bajo Riesgo**.

- Usted está en el **Grupo de Alto Riesgo** si es una mujer embarazada, una mujer que podría quedar embarazada, una madre lactante o un niño menor de seis años.
- Si no eres parte del grupo de Alto Riesgo, entonces eres parte del **Grupo de Bajo Riesgo**.

Se aconseja para tres tipos diferentes de consumo de pescado:

1. **Consejos estatales sobre el pescado de AGUA FRESCA:** La mayoría de los peces de agua fresca de Connecticut contienen suficiente mercurio para limitar el consumo. El consejo para agua fresca del estado es:

- Grupo de Alto Riesgo: no consumir más de 1 comida al mes
- Grupo de Bajo Riesgo: no consumir más de 1 comida por semana

2. **Consejos para CUERPOS DE AGUA ESPECÍFICOS:** Algunas masas de agua contienen peces con niveles más altos de contaminantes. Estos cuerpos de agua incluyen el Río Housatonic, algunos lagos y ciertas especies de Long Island Sound. El gráfico grande en el centro de este folleto proporciona detalles sobre cómo comer pescado de estas masas de agua de forma segura.

3. **Consejos para pescado comprado en el MERCADO:** La mayoría de los pescados del mercado son saludables y contienen nutrientes importantes, como los ácidos grasos omega-3. Sin embargo, hay algunos peces que contienen altos niveles de mercurio o PCB, por lo que deben consumirse menos o evitar. Este folleto señala qué pescados son saludables para comer y cuáles no son seguros (pequeña tabla en la página 3).

¿Es seguro comer Truchas?

La mayoría de las truchas de los ríos de Connecticut son seguras para comer porque usualmente tienen poca contaminación y se reabastecen rutinariamente. Sin embargo, existen límites para la trucha de ciertas masas de agua debido a los PCB y PFOS y para las truchas grandes de los lagos debido al mercurio (ver gráfico grande en el centro).

Página
1

¿Cómo entran estos contaminantes en los peces?

El mercurio, los PCB y PFOS pueden acumularse en los peces a niveles que son miles de veces mayores a los del agua. Estos contaminantes entran en el agua por:

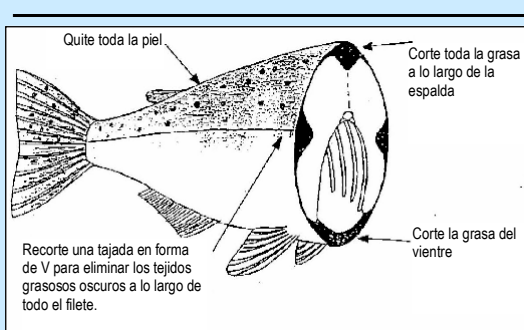
- **Derrames químicos que ocurrieron en el pasado.** Aunque estos derrames se han detenido, pueden pasar años hasta que los niveles de contaminantes en los peces bajen a niveles seguros.
- **Mercurio en el aire.** El mercurio viaja largas distancias desde donde se libera. Gran parte proviene de la contaminación atmosférica fuera de Connecticut.

El Departamento de Energía y Protección Ambiental de Connecticut (CT DEEP) está trabajando para mejorar la calidad del agua en Connecticut y está limitando la cantidad de mercurio que se puede liberar en el aire.

¿Qué más puedo hacer para comer pescado de forma segura?

Los PCB se encuentran principalmente en las partes grasosas del pescado. Es muy importante eliminar la piel y otras partes grasosas. Cocine el pescado en una parrilla (asador) para que la grasa pueda gotear de la carne.

Retire las porciones grasosas antes de cocinar



Retire y no coma los órganos, la cabeza, la piel y los tejidos grasosos oscuros a lo largo de la espina dorsal, las líneas laterales y el vientre.

El mercurio se encuentra en la porción comestible (filete) del pescado. Por lo tanto, no se puede reducir la exposición al mercurio cocinando o limpiando el pescado. Los peces grandes usualmente tienen los niveles más altos de PCB y mercurio. Si tiene la opción, coma peces más pequeños de cualquier especie. Además, algunas especies más pequeñas usualmente tienen niveles de contaminación más bajos (perca, trucha pequeña, pez sol).

Esta hoja informativa está financiada en parte con fondos del Programa de Seguimiento de Salud Pública Ambiental de CT y Ley de Respuesta Ambiental Exhaustiva, Compensación y Responsabilidad y a través de un acuerdo cooperativo con la Agencia para el Registro de Sustancias Tóxicas y Enfermedades, Servicio de Salud Pública y el Departamento de Salud y Servicios Humanos.

Página 2

¿Qué pasa con el pescado de mercados y restaurantes?

Muchos pescados del mercado o del restaurante son bajos en contaminantes. Algunos de estos pescados también tienen un alto contenido de ácidos grasos omega-3, un aceite nutritivo de pescado que mejora el desarrollo cerebral y ayuda a prevenir las enfermedades cardíacas. Sin embargo, algunos pescados del mercado pueden contener altos niveles de ciertos contaminantes, especialmente mercurio.

En general, las personas del Grupo de **Alto Riesgo** pueden comer hasta 2 comidas de pescado a la semana en el mercado o en los restaurantes. Algunos peces tienen un contenido especialmente bajo de contaminantes y se pueden comer con más frecuencia. Los siguientes son consejos específicos para que los miembros del Grupo de **Alto Riesgo** elijan pescados saludables en la tienda:

- Pez Espada y Tiburón: contienen altos niveles de mercurio y **no deben comerse**.
- Atún enlatado: Elija atún «claro» porque tiene menos mercurio que el atún «blanco».
- La langosta y otros mariscos son generalmente bajos en contaminantes químicos. El tomalley de la langosta (la glándula verde) puede tener un alto contenido de contaminantes y no debe comerse. Esto se aplica a la langosta de Long Island Sound y de otros lugares.

Pescado del mercado y restaurante

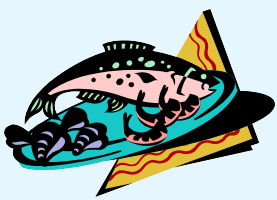
La siguiente tabla es un guía general para **Las Mujeres y Los Niños** sobre qué peces elegir. Los pescados con corazones **♥** son especialmente altos en ácidos grasos omega-3 y/o muy bajos en contaminantes y pueden consumirse más de dos veces por semana.

Comer 2 veces por semana		Comer 1 vez por semana		Evitar
Arenque ♥	Trucha ♥	Filete de atún		Pez espada
Abadejo ♥	Eglefino	Fletán		Tiburón
Salmón (salvaje) ♥	Perca	Pargo rojo		Caballa real
Caballa ♥	Tilapia	Atún blanco (enlatado)		Bajo rayado
Platija de verano ♥	Atún claro (enlatado)	Bagre (criado en granja)		Blanquillos (Golfo de México)
Lenguado ♥	Bacalao	Blanquillos (Atlántico)		Anjova
Sardinas & Eperlanos ♥	Salmón (criado en granja)			Sushi de atún
Mariscos: Ostras, camarones, almejas, vieiras, langosta *		* Ver advertencia arriba sobre el tomalley de langosta		

Las personas del Grupo de **Bajo Riesgo** pueden comer con seguridad mayores cantidades de mariscos del mercado. Por ejemplo, pez espada o tiburón, una vez al mes; bistec de atún o fletán, dos veces por semana.

Página 3





Consumo Seguro Pescado de Connecticut 2023

CONSEJOS DEL ESTADO SOBRE PECES DE AGUA FRESCAS

Cuerpo de Agua	Especies de Peces	Grupo de Alto Riesgo ^a	Grupo de Bajo Riesgo ^b	Contaminante
Todos los lagos, estanques, ríos y arroyos frescos	Trucha ^c Pez Sol	Sin límites de consumo	Sin límites de consumo	
	Todos los demás peces de agua fresca	Una comida al mes	Una comida por semana	Mercurio

CONSEJOS ESPECIALES PARA LA ZONA DEL RÍO HOUSATONIC

Cuerpo de Agua	Especies de Peces	Grupo de Alto Riesgo ^a	Grupo de Bajo Riesgo ^b	Contaminante
Río Housatonic sobre el Lago Lillinonah	Trucha, Siluro, Anguilas, Carpa, Lucio del Norte	No comer	No comer	PCB
	Róbalo, Perca Blanca	No comer	Una comida cada 2 meses	PCB
	Agalla Azul, Bullhead, Fallfish	Una comida al mes	Una comida al mes	PCB
	Perca Amarilla, Cabrilla Sargacera (Crappie), Bajo de Roca & Pez Sol	Una comida al mes	Una comida por semana	PCB
Lagos en el Río Housatonic: (Lillinonah, Zoar, Housatonic)	Siluro, Anguilas, Carpa, Lucio del Norte, Trucha	No comer	No comer	PCB
	Perca Blanca, Fallfish, Bullhead	Una comida al mes	Una comida al mes	PCB
	Róbalo	No comer	Una comida cada 2 meses	PCB
	Perca Amarilla, Cabrilla Sargacera (Crappie), Bajo de Roca, Agalla Azul y Pez Sol	Una comida al mes	Una comida por semana	PCB
Furnace Brook (Cornwall)	Trucha	Una comida al mes	Una comida al mes	PCB
Río Blackberry debajo del «Blast Furnace» (North Canaan)	Róbalo de Boca Chica	Una comida al mes	Una comida al mes	PCB
Río Naugatuck ^d	Róbalo	Una comida al mes	Una comida al mes	PFOS
Río Housatonic en La Island de O'Sullivan ^e	Todas las especies	Una comida al mes	Una comida al mes	PFOS

CONSEJOS ESPECIALES PARA OTROS CUERPOS DE AGUA FRESCAS DE CONNECTICUT Y LONG ISLAND SOUND

Cuerpo de Agua	Especies de Peces	Grupo de Alto Riesgo ^a	Grupo de Bajo Riesgo ^b	Contaminante
Estanque Dodge Lago McDonough Lago Silver Lago Wyassup	Róbalo de Boca Grande, Róbalo de Boca Chica	No comer	Una comida al mes	Mercurio
Río Quinnipiac (Garganta al Sur de Meriden a través de Wallingford hasta Long Island Sound)	Todas las especies	Una comida al mes	Una comida al mes	PCB, PFOS
Río Connecticut ^f	Todas las especies excepto Sábalo	Una comida al mes	Una comida al mes	PCB, PFOS
Versailles, Estanque Papermill & Lago Little (Sprague)	Todas las especies	No comer	No comer	Mercurio PCB
Río Konkapot (North Canaan)	Ventosa Blanca	No comer	Una comida al mes	Mercurio
Estanque Brewster (Stratford)	Siluro y Bullhead	No comer	No comer	Clordano
Estanque Union (Manchester)	Todas las especies	No comer	No comer	PFOS
Río Still (Winchester)	Róbalo	Una comida al mes	Una comida al mes	PFOS
Río Scantic ^g	Anguila Americana	Una comida al mes	Una comida al mes	PFOS
Río Pequabuck	Anguila Americana	Una comida al mes	Una comida al mes	PFOS
Ríos Natchaug, Willimantic y Shetucket ^h (Willimantic y Mansfield)	Róbalo Todas las demás especies	No comer Una comida al mes	No comer Una comida al mes	PFOS
Ríos Hockanum y Tankerhoosen ⁱ (Vernon, Ellington, Manchester, East Hartford)	Todas las especies	No comer	No comer	PFOS
Río Farmington Inferior ^j	Perca Amarilla y Róbalo	Una comida al mes	Una comida al mes	PFOS
Long Island Sound y Ríos conectados	Róbalo Rayada Anjova Pez Azul a más de 25" Anjova Azul 13-25" Pescadillas	No comer No comer Una comida al mes Una comida al mes	Una comida al mes Una comida al mes Una comida al mes Una comida al mes	PCB PCB PCB PCB
Río Mill, Fairfield [Excluido Southport Harbor]	Cangrejo Azul	No comer	No comer	Lead

RECUERDE

Sigue este aviso para asegurarte que el pescado que elijas comer sea seguro para tu familia.

- Cada cuerpo de agua fresca tiene algunos límites de consumo, como se indica en la parte superior de la tabla.
- *Long Island Sound*: La mayoría de los peces son seguros para comer excepto por las restricciones indicadas sobre el bajo rayado, la anjova y corvinas.
- Tenga en cuenta los consejos para el pescado del mercado o del restaurante. Vea los consejos de mercado en la página 3.
- La exposición a los PCB en el pescado se puede reducir recortando la grasa y cocinando el pescado en una parrilla para que la grasa escurra.

¿DÓNDE PUEDO OBTENER MÁS INFORMACIÓN?

Se pueden obtener datos más específicos llamando al 1-877-458-FISH (3474) o yendo al SITIO WEB de DPH: <https://portal.ct.gov/fish>

¿Tiene preguntas de salud?

Llame gratis a CT DPH a: **1-877-458-FISH (3474)**

¿Tiene preguntas sobre la pesca en Connecticut?

Llame a CT DEEP al 860-424-3474.

www.ct.gov/deep/fishing

Notas al Pie de la Tabla:

- El **Grupo de Alto Riesgo** incluye mujeres embarazadas, mujeres que podrían quedar embarazadas, mujeres lactantes y niños menores de 6 años. El **Grupo de Alto Riesgo** no debe comer más de una comida de pescado al mes de la mayoría de los peces de agua fresca de aguas locales.
- El **Grupo de Bajo Riesgo** debería limitar el consumo de la mayoría de los peces de agua fresca a una vez por semana.
- La mayoría de las truchas no forman parte de ningún advertencia menos que se indique lo contrario.
- Incluyo todo el Río, así como el río West Branch Naugatuck, río debajo de Estanque Stillwater, Torrington.
- El Río Housatonic río arriba hasta la Represa Derby y río abajo hasta el puente de la Ruta 15. Aguas arriba en el Río Naugatuck hasta la Presa Kinneytown.
- Sábalo solo viajan al Río Connecticut para desovar, tienen poca contaminación, y no están incluidos en este advertencia.
- El límite aguas arriba es la Presa del Estanque de Somerville
- El Río Natchaug desde la presa del Embalse Willimantic (límite norte) aguas abajo hasta donde forma el Río Shetucket. El consejo se extiende 1/2 milla por el Río Shetucket hasta Plains Road. El Río Willimantic desde donde se encuentra con Los Ríos Shetucket y Natchaug río arriba hasta la presa de Pine Street.
- El Río Hockanum de la salida de Lago Shenipsit (Avenida Tolland, Vernon) al Río Connecticut, incluyendo varios embalses y estanques (East Hartford) y el Río Tankerhoosen (aguas arriba de la presa en Main Street, Vernon).
- Aguas debajo de la Presa Rainbow en la ciudad de Windsor hasta la confluencia con Río Connecticut.
- Los pargos (peces azules menores de 13") no están en el aviso porque tienen una contaminación muy baja.

Arcadis U.S., Inc.
One Lincoln Center, 110 West Fayette Street, Suite 300
Syracuse
New York 13202
Phone: 315 446 9120
Fax: 315 449 0017
www.arcadis.com