



Citizens Coordinating Council

March 30, 2022

Agenda

- Rest of River – Upcoming Field Activities
- Rest of River – Current/Upcoming Documents for Public Input
- Post-Remediation Sampling in Upper 2-Mile Reach
- Rest of River Permit Status

Rest of River – Field Activities

First year of baseline monitoring

- Surface water sampling to conduct a study on analytical techniques
- Study of PCB-loading into Rest of River
- Evaluation of sampling locations at Woods Pond and Rising Pond dams

Rest of River – Upcoming Field Activities

Baseline Monitoring

Location	PCB Analytical Method		Sampling Frequency
	1668C	8270D-SIM	
East Branch at Pomeroy Avenue, Pittsfield, MA	✓	✓	<p>One sample per month for eight months (March, May through October, and November or December)</p> <p>*In addition, all samples will be analyzed for total Suspended Solids (TSS)</p> <p>**EPA will be collecting one split sample per sampling event.</p>
West Branch at South St./Rt 7, Pittsfield, MA	✓		
New Lenox Road, Lenox, MA	✓	✓	
Woods Pond Dam (Wing Walls)	✓		
Woods Pond Dam (Schweitzer Bridge)	✓	✓	
Rising Pond Dam (Wing Walls)	✓		
Rising Pond Dam (Division Street)	✓	✓	
Route 7/Lime Rock Road Bridge in Canaan, CT	✓	✓	

Rest of River – Field Activities

UDF Investigations

- Installation of borings/wells (started week of March 21)
- Baseline habitat assessment, including a wetland survey as needed (Late April through mid June)
- Topographic/bathymetric field survey (Late April through mid May)
- Installation of weather station: early June
- Initial Phase I Cultural Resource Assessment

Figure 3 Proposed MW/ Piezometer locations for the UDF

Note: A piezometer is a small diameter well used primarily to measure groundwater elevations.

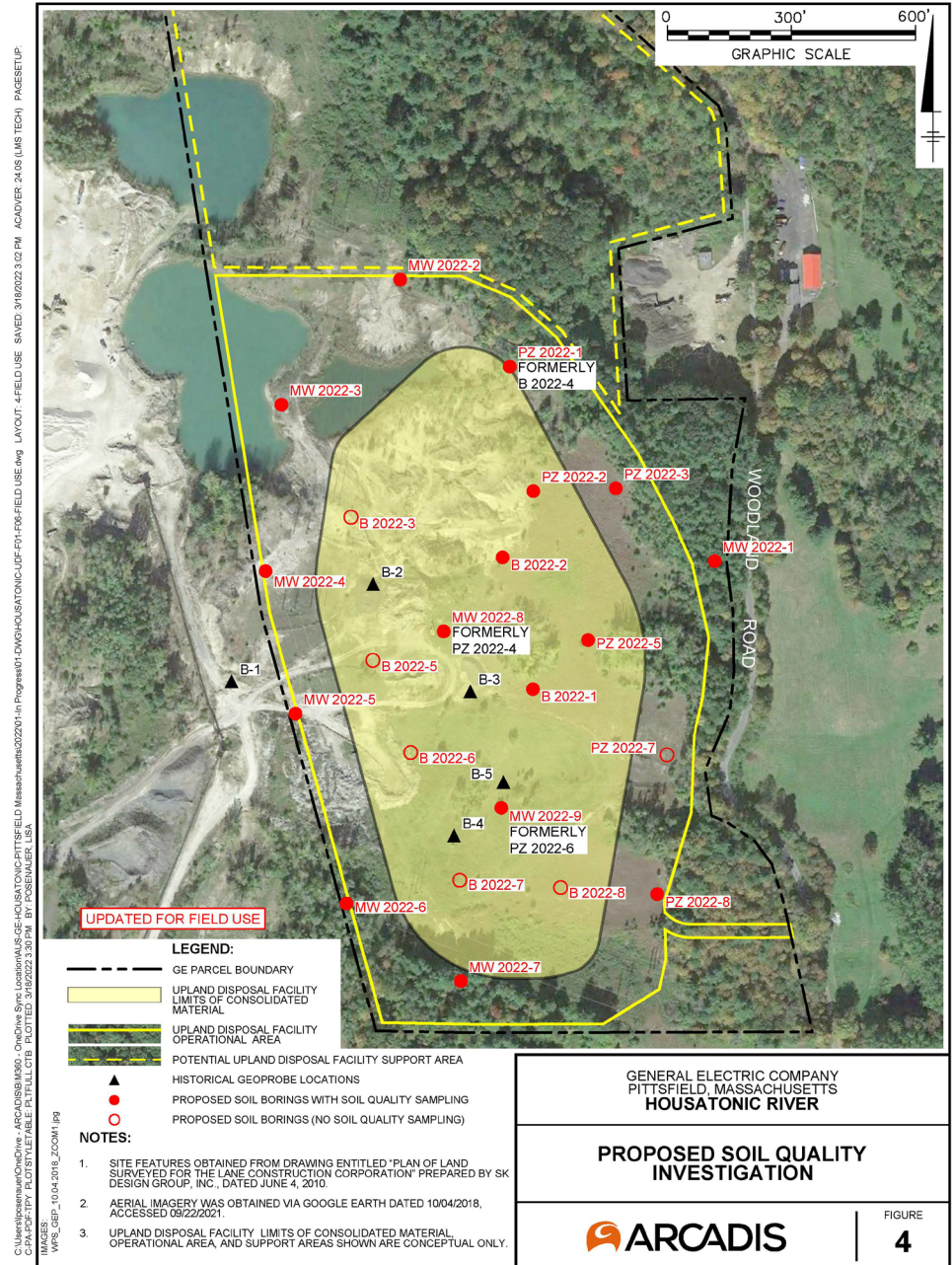


Table 1-Proposed Soil Borings/Wells for the UDF

Boring ID	Anticipated Use			
	Soil Geotechnical Data	Soil Environmental Data	Monitoring Well	Temporary Piezometer
MW 2022-1	X	X	X	
MW 2022-2	X	X	X	
MW 2022-3	X	X	X	
MW 2022-4	X	X	X	
MW 2022-5	X	X	X	
MW 2022-6	X	X	X	
PZ 2022-1	X	X		X
PZ 2022-2	X	X		X
PZ 2022-3	X	X		X
PZ 2022-4	X	X		X
PZ 2022-5	X			X
PZ 2022-6	X			X
PZ 2022-7	X			X
PZ 2022-8	X	X		X
B 2022-1	X			
B 2022-2	X			
B 2022-3	X			
B 2022-4	X			

Rest of River – Upcoming Field Activities

Reach 5A sampling to begin in April

Approximate number of samples:

-Sediment: 2,200

-Riverbank: 5,975

-Floodplain: 2,750

•**Total: 10,925**

-EPA to collect split samples for approximately 5% of analyses.

Documents with Public Input Period

Document	Date from GE	Input Due date
Woods Pond Dam Phase I Inspection Report	February 9, 2022	April 22, 2022
Rising Pond Dam Phase I Inspection Report	February 17, 2022	April 22, 2022
2021 Annual report on Biota Consumption Advisory Outreach Activities - CT	February 28, 2022	April 22, 2022
2021 Annual report on Biota Consumption Advisory Outreach Activities - Mass	February 28, 2022	April 22, 2022
Long-Term Baseline Monitoring Plan	June 30, 2022	TBD

How to Provide Input on SOW Documents

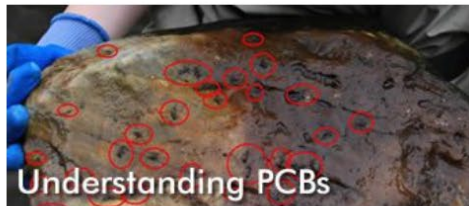
Documents available on EPA web page at:

<https://www.epa.gov/ge-housatonic/opportunities-input-housatonic-rest-river-permit-submittals>



GE Site & River Cleanup

- [Why cleanup the GE Site and the Housatonic River?](#)
- [What progress has been made?](#)
- [How much longer will the total cleanup take?](#)



Understanding PCBs

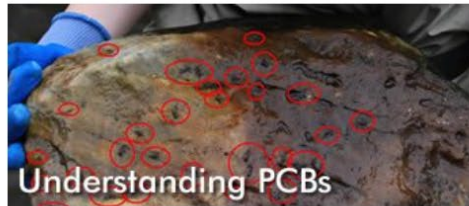
- [Fast Facts: Housatonic River PCBs](#)
- [How do PCBs get into the environment?](#)
- [How do PCBs get into plants and animals?](#)
- [Wildlife and Human Health Effects from PCBs](#)
- [Understanding the Housatonic Rest of River and Floodplain Risk Assessments](#)

Stay Updated!

- [Opportunities for Input on Housatonic Rest of River Permit Submittals](#)
- [Follow the Housatonic Cleanup on Facebook](#) 
- [Newsroom](#)
- [Public Comment, Meetings and Events](#)
 - [Public Comments and Hearing Transcripts on Draft Revised 2020 Permit](#)
- [Contact Us](#) 

Provide Comments to R1Housatonic@epa.gov

Public Input Received



Stay Updated!

- [Opportunities for Input on Housatonic Rest of River Permit Submittals](#)
- [Follow the Housatonic Cleanup on Facebook](#)

<https://www.epa.gov/ge-housatonic/opportunities-input-housatonic-rest-river-permit-submittals>

Submittals with closed input periods:

[Revised Floodplain Pre-Design Investigation Work Plan \(including Vernal Pools\), Reach 5A: Received from GE June 25, 2021 \(pdf\)](#) (17 MB)

Input period ended on August 16, 2021.

- [Public comments on submittal \(pdf\)](#) (1.1 MB)

[Revised Statement of Work: Received from GE July 12, 2021 \(pdf\)](#) (13.8 MB)

Input period ended on August 31, 2021.

- [Public comments on submittal \(pdf\)](#) (900 K)

[Revised Biota Consumption Advisory Outreach Plan for Housatonic Rest of River - Connecticut: Received from GE on August 9, 2021 \(pdf\)](#) (5.1 MB)

Input period ended on November 18, 2021.

- [Public comments on submittal \(pdf\)](#) (690 K)

[Pre-Design Investigation Work Plan, Reach 5A Riverbanks, Sediment and Backwaters: Received from GE on September 27, 2021 \(pdf\)](#) (14.5 MB)

Input period ended on November 18, 2021.

Post-Remediation Sampling in Upper 2-Mile Reach

- Sampling of Surficial/Depositional scheduled for summer 2022
- Upper 1/2-Mile Reach—Approximately 40 samples
- 1.5 Mile Reach— Approximately 140 samples
- EPA to collect split samples at a rate of 10%.

Rest of River Permit Status

- On February 8, 2022, EAB denied review of the Permit in its entirety.
- On February 28, 2022, EPA issued a letter to GE stating that the Final Permit became fully enforceable and effective on March 1, 2022.
- Information on the EAB is available at: www.epa.gov/eab