

Compliance Calculations for Lower Harbor Compliance Demonstration Areas
 New Bedford Harbor Superfund Site
 April 6, 2017

Compliance Demonstration Area ¹	Station ID	Sample Date	Sample ID	Field QC Code	Sample Date	Confirmatory: Sum 139 PCB Congeners (mg/kg)	Sum 139 PCB Congeners Average ² (mg/kg)
MU 36	LHC01	14-Jun-16	S-16U-LHC01-00-05	SA	14-Jun-16	1.76	14.2
MU 36	LHC02	07-Jun-16	S-16U-LHC02-00-05	SA	07-Jun-16	25.8	
MU 36	LHC03	14-Jun-16	S-16U-LHC03-00-04	SA	14-Jun-16	7.25	
MU 36	LHC04	14-Jun-16	S-16U-LHC04-00-05	SA	14-Jun-16	35	
MU 36	LHC05	07-Jun-16	S-16U-LHC05-00-05	SA	07-Jun-16	20.3	
MU 36	LHC06	07-Jun-16	S-16U-LHC06-00-05	SA	07-Jun-16	19.2	
MU 36	LHC07	14-Jun-16	S-16U-LHC07-00-04	SA	14-Jun-16	17	
MU 36	LHC08	14-Jun-16	S-16U-LHC08-00-05	SA	14-Jun-16	6.21	
MU 36	LHC09	14-Jun-16	S-16U-LHC09-00-05	SA	14-Jun-16	2.75	
MU 36	LHC10	07-Jun-16	S-16U-LHC10-00-05	SA	07-Jun-16	18.9	
MU 36	LHC11	07-Jun-16	S-16U-LHC11-00-05	SA	07-Jun-16	14.5	
MU 36	LHC12	07-Jun-16	S-16U-LHC12-00-05	SA	07-Jun-16	32.5	
MU 36	LHC13	14-Jun-16	S-16U-LHC13-00-05	SA	14-Jun-16	26.1	
MU 36	LHC14	07-Jun-16	S-16U-LHC14-00-05	SA	07-Jun-16	30.9	
MU 36	LHC15	07-Jun-16	S-16U-LHC15-00-04	SA	07-Jun-16	17.2	
MU 36	LHC16	07-Jun-16	S-16U-LHC16-00-05	SA	07-Jun-16	23.8	
MU 36	LHC17	07-Jun-16	S-16U-LHC17-00-05	SA	07-Jun-16	22.8	
MU 36	LHC17	07-Jun-16	S-16U-LHC17-00-05-REP	REP	07-Jun-16	17.3	
MU 36	LHC18	07-Jun-16	S-16U-LHC18-00-05	SA	07-Jun-16	0.189	
MU 36	LHC19	07-Jun-16	S-16U-LHC19-00-05	SA	07-Jun-16	5.95	
MU 36	LHC20	14-Jun-16	S-16U-LHC20-00-05	SA	14-Jun-16	0.8	
MU 36	LHC20	14-Jun-16	S-16U-LHC20-00-05-REP	REP	14-Jun-16	0.653	
MU 36	LHC21	14-Jun-16	S-16U-LHC21-00-04	SA	14-Jun-16	0.557	
MU 36	LHC22	07-Jun-16	S-16U-LHC22-00-05	SA	07-Jun-16	6.53	
MU 36	LHC23	07-Jun-16	S-16U-LHC23-00-04	SA	07-Jun-16	3.23	
MU 36	LHC24	07-Jun-16	S-16U-LHC24-00-04	SA	07-Jun-16	5.15	
MU A33/33A	LH02	17-Nov-16	S-16N-LH02-00-05	SA	17-Nov-16	9.21	9.29
MU A33/33A	LH04	21-Jul-16	S-16L-LH04-00-05	SA	21-Jul-16	4.93	
MU A33/33A	LH04	21-Jul-16	S-16L-LH04-00-05-REP	REP	21-Jul-16	5.28	
MU A33/33A	LH05	21-Jul-16	S-16L-LH05-00-05	SA	21-Jul-16	10.6	
MU A33/33A	LH07	17-Nov-16	S-16N-LH07-00-05	SA	17-Nov-16	36	
MU A33/33A	LH09	21-Jul-16	S-16L-LH09-00-05	SA	21-Jul-16	9.31	
MU A33/33A	LH11	18-Nov-16	S-16N-LH11-00-05	SA	18-Nov-16	19.5	
MU A33/33A	LH13	21-Jul-16	S-16L-LH13-00-05	SA	21-Jul-16	0.958	
MU A33/33A	LH15	22-Jul-16	S-16L-LH15-00-05	SA	22-Jul-16	0.303	
MU A33/33A	LH17	22-Jul-16	S-16L-LH17-00-05	SA	22-Jul-16	0.257	
MU A33/33A	LH19	22-Jul-16	S-16L-LH19-00-05	SA	22-Jul-16	1.65	

**Compliance Calculations for Lower Harbor Compliance Demonstration Areas
New Bedford Harbor Superfund Site
April 6, 2017**

Compliance Demonstration Area ¹	Station ID	Sample Date	Sample ID	Field QC Code	Sample Date	Confirmatory: Sum 139 PCB Congeners (mg/kg)	Sum 139 PCB Congeners Average ² (mg/kg)
Nearshore	35B-02	26-Sep-16	S-16S-35B-02-00-05	SA	26-Sep-16	19.4	12.9
Nearshore	35B-02	26-Sep-16	S-16S-35B-02-00-05-REP	REP	26-Sep-16	19.7	
Nearshore	35B-08	26-Sep-16	S-16S-35B-08-00-05	SA	26-Sep-16	34.5	
Nearshore	35B-10	26-Sep-16	S-16S-35B-10-00-05	SA	26-Sep-16	4.41	
Nearshore	35B-13	26-Sep-16	S-16S-35B-13-00-05	SA	26-Sep-16	20.7	
Nearshore	A34-01	17-Nov-16	S-16N-A34-01-00-05	SA	17-Nov-16	16.9	
Nearshore	A34-04	16-Jan-17	S-17J-A34-04-00-05	SA	16-Jan-17	0.911	
Nearshore	A34-06	16-Jan-17	S-17J-A34-06-00-05	SA	16-Jan-17	25.4	
Nearshore	B33-05	19-Aug-16	S-16G-B33-05-00-05	SA	19-Aug-16	20	
Nearshore	B34-02	14-Oct-16	S-16O-B34-02-00-05	SA	14-Oct-16	10.4	
Nearshore	B35-01	03-Nov-16	S-16N-B35-01-00-05	SA	03-Nov-16	0.358	
Nearshore	C33-02	14-Oct-16	S-16O-C33-02-00-05	SA	14-Oct-16	0.883	
Nearshore	C34-04	14-Oct-16	S-16O-C34-04-00-05	SA	14-Oct-16	5.8	
Nearshore	C35-03	18-Nov-16	S-16N-C35-03-00-05	SA	18-Nov-16	3.75	
Nearshore	D34-02	14-Oct-16	S-16O-D34-02-00-05	SA	14-Oct-16	25.5	
Nearshore	G34-02	14-Oct-16	S-16O-G34-02-00-05	SA	14-Oct-16	3.79	
Lower Harbor East	A36-01	28-Dec-16	S-16D-A36-01-00-05	SA	28-Dec-16	12.4	17.3
Lower Harbor East	A36-01	28-Dec-16	S-16D-A36-01-00-05-REP	REP	28-Dec-16	5.07	
Lower Harbor East	A36-03	28-Dec-16	S-16D-A36-03-00-05	SA	28-Dec-16	24.4	
Lower Harbor East	A36-05	16-Jan-17	S-17J-A36-05-00-05	SA	16-Jan-17	42.6	
Lower Harbor East	A36-07	20-Feb-17	S-17F-A36-07-00-05	SA	20-Feb-17	31.2	
Lower Harbor East	A36-09	19-Jan-17	S-17J-A36-09-00-05a	SA	19-Jan-17	2.33	
Lower Harbor East	A36-11	16-Jan-17	S-17J-A36-11-00-05	SA	16-Jan-17	7.06	
Lower Harbor East	A36-13	16-Jan-17	S-17J-A36-13-00-05	SA	16-Jan-17	5.06	

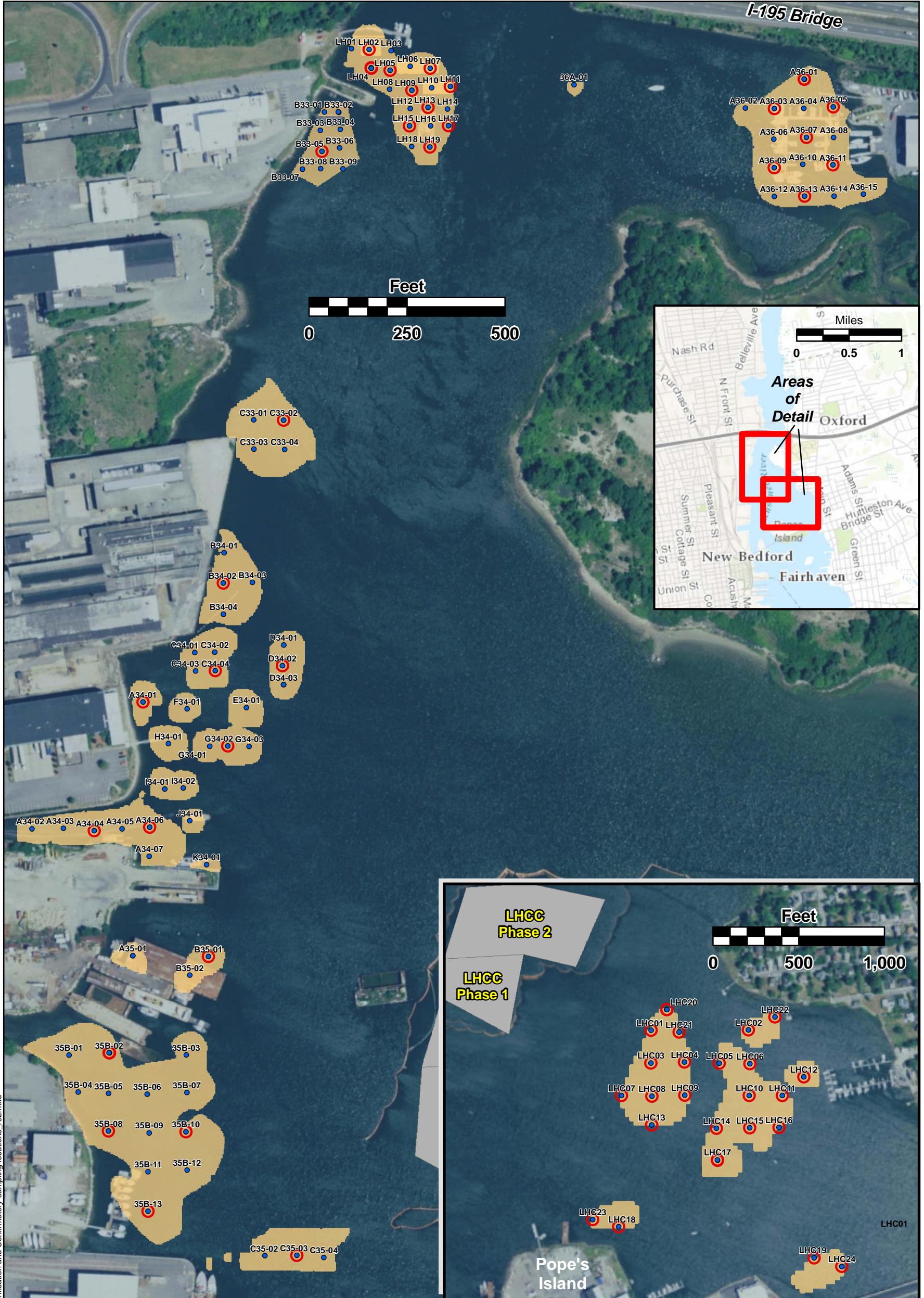
Notes:

¹ The Lower Harbor East compliance demonstration area originally included MUs A36 through D36, and MUs 37C and 37D. MU C36 has been incorporated into the Marsh Island intertidal remediation area, and MUs B36 and D36 no longer require dredging. MUs 37C and 37D have not been dredged yet.

² Field duplicate results are averaged in the compliance calculation.

ID - identification; QC - quality control; PCB - polychlorinated biphenyl

SA - field sample; REP - field duplicate



FILE: C:\GIS\New_Bedford_Harbor\Maps\NBH_LH_Verification and Confirmatory sampling locations_r02.mxd

- Legend**
- Verification Sample Location
 - Confirmatory Sample Location
 - Dredge Areas (Completed)
 - EPA CAD CELL Phase I or Phase II



Lower Harbor
Verification and Confirmatory
Sample Locations

New Bedford Harbor
Superfund Site

DATE: 2/23/2017 ANALYST: hicksj
REV. 0 APPROVED: WHITE