

Table E-1
Ambient Air Monitoring Program - Total Detectable PCB Homologues

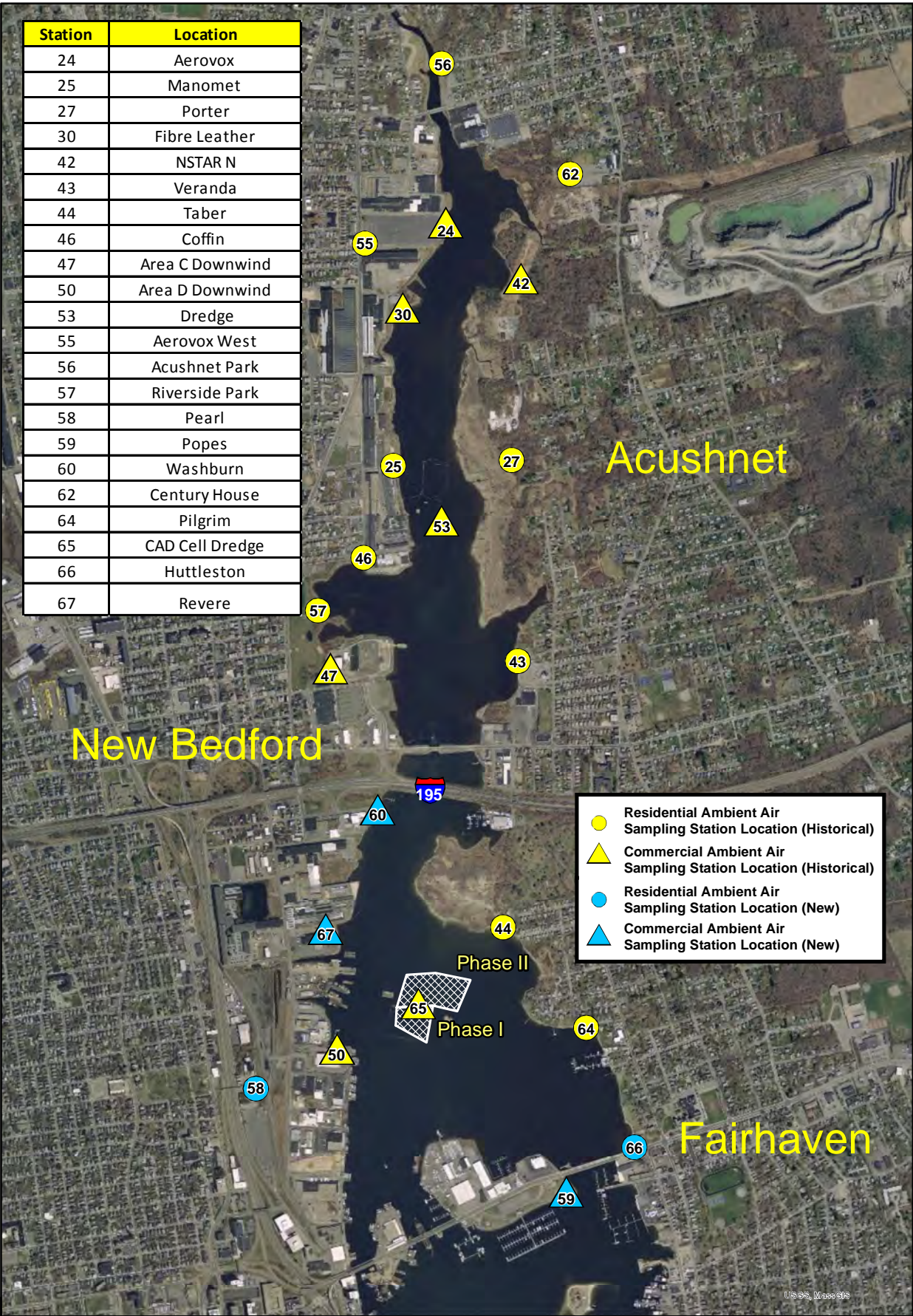
Sampling Date	PCB Concentration by Location (ng/m ³ in 24-hour time-weighted average) ¹																										Activity Period			
	24	25	25	27	30 Fibre	42	43	44	46	Area C			Area D			53	55	56	57	58 Pearl	59 Popes	60	61 South	62	63	64		65	66	67
	Aerovox	Manomet	Cliftex	Porter	Leather	NSTAR North	Veranda	Taber	Coffin	47	48	49	50	51	52	Dredge	Aerovox West	Acushnet Park	Riverside Park			Wash-burn	Fence	Century House	Boathouse	Pilgrim		LHCC Dredge	Huttleston	Revere
11/10/16	NS	NS		NS	NS	NS	13.6	NS	4.73	1.64/1.63d	NS	NS	NS	NS	NS	NS			0.661	NS	NS	NS				NS	NS	NS	NS	2016 Upper Harbor Pre- excavation PMC results. Unvalidated results.
11/07/16	NS	NS		NS	NS	NS	6.26	4.07	NS	3.38	NS	NS	5.82/3.75d	NS	NS	NS	NS			0.419	3.55	7.29				2.10	3.19	NS	5.57	2016 Lower Harbor Dredging in Area A34. Dredge was sampled. Unvalidated results.
10/19/16	NS	NS		NS	NS	NS	85.2	18.2	NS	26.2	NS	NS	21.1/24.4d	NS	NS	NS	NS			3.89	13.0	30.2				10.6	17.1	NS	22.9	2016 Lower Harbor Dredging in Area A34. Dredge was sampled.
09/20/16	NS	NS		NS	NS	NS	35.3	18.9	NS	21.4	NS	NS	20.6/22.0d	NS	NS	NS	NS			2.50	NS	59.5				15.7	37.4	NS	25.9	2016 Lower Harbor Dredging in Area A34. Dredge was sampled.
08/18/16	NS	NS		NS	NS	NS	97.6	19.1	NS	17.1/17.1d	NS	NS	6.56	NS	NS	NS	NS			3.24	10.5	12.6				11.6	30.1	11.6	9.95	2016 Lower Harbor Dredging in Area 35B. Dredge was sampled.
08/11/16	NS	61.1		32.2	35.2/39.2d	35.6	NS	NS	NS	NS	NS	NS	NS	NS	704	NS				NS	NS	NS				NS	NS	NS	NS	2016 Upper Harbor Debris Removal. Debris Barge was sampled.
07/27/16	NS	NS		NS	NS	NS	42.9	23.7	NS	18.1/16.5d	NS	NS	12.3	NS	NS	NS	NS			0.416	7.36	32.4				11.1	83.1	6.42	13.4	2016 Lower Harbor Dredging. Dredge was sampled.
07/20/16	NS	95.1		22.8	56.9/52.0d	33.2	NS	NS	25.3	NS	NS	NS	NS	NS	513	NS				NS	NS	NS				NS	NS	NS	NS	2016 Upper Harbor Debris Removal. Debris Barge was sampled.
06/27/16	NS	NS		NS	NS	NS	21.8	32.8	NS	14.4/13.4d	NS	NS	8.15	NS	NS	NS	NS			0.473	9.53	48.6				13.92	63.0	6.63	8.96	2016 Lower Harbor Debris Removal. Debris Barge was sampled.
06/13/16	NS	10.0		14.4	NS	NS	36.5	NS	0.630	6.37/5.45d	NS	NS	NS	NS	47.1	NS				NS	NS	NS				NS	NS	NS	NS	2016 Upper Harbor Debris Removal. Debris Barge was sampled.
05/23/16	NS	NS		NS	NS	NS	11.9	1.88	NS	28.2	NS	NS	23.8/24.0d	NS	NS	NS	NS			5.59	3.38	22.1				3.93	15.1	1.32	21.9	2016 Lower Harbor Debris Removal. Debris Barge was sampled.
05/16/16	NS	5.89		11.8	NS	NS	41.7	NS	3.96	3.86/2.40d	NS	NS	NS	NS	34.9	NS				NS	NS	NS				NS	NS	NS	NS	2016 Upper Harbor Debris Removal. Debris Barge was sampled.
04/25/16	NS	NS		NS	NS	NS	10.9	6.02	NS	14.7	NS	NS	6.55/6.46d	NS	NS	NS	NS			2.26	7.43	11.6				6.28	8.57	3.43	6.04	2016 Lower Harbor Dredging and Debris Removal. Dredge was sampled.
03/22/16	NS	NS		NS	NS	NS	12.6	7.48	NS	2.38/2.16d	NS	NS	0.578	NS	NS	NS	NS			0.0804	2.53	0.553				6.38	8.81	5.25	0.379	2016 Lower Harbor Dredging and Debris Removal. Dredge was sampled.
02/18/16	NS	NS		NS	NS	NS	4.88	1.34	0.114	2.69	NS	NS	0.979/1.13d	NS	NS	NS	NS			0.00	1.33	1.10				0.864	3.36	1.62	0.870	2016 Combined Lower Harbor Dredging and Parcel 265 Excavation monitoring events.
01/26/16	NS	NS		NS	NS	NS	14.1	4.39	NS	4.82	NS	NS	0.867/1.08d	NS	NS	NS	NS			0.208	2.04	0.965				4.75	NS	2.07	0.278	2016 Lower Harbor Debris Removal only.
01/21/16	NS	NS		NS	NS	NS	2.81	0.787	0.076	0.916	NS	NS	NS	NS	NS	NS	NS			NS	NS	0.071				NS	NS	NS	NS	2016 Parcel 265 Excavation air monitoring event. Pump #21 stopped at 1033.
01/18/16	0.216	0.329		NS	0.0185	11.9	1.68	0.496	0.138	0.298	NS	NS	0.102/0.117d	NS	NS	NS	0.00348			NS	NS	NS				1.87	NS	NS	NS	2016 Upper Harbor Post-Dredge Sampling Event. Location #27 Porter not sampled due to lack of access caused by snow.
12/15/15	NS	NS		NS	NS	NS	NS	NS	NS	NS	NS	NS	5.12	NS	NS	NS	NS			0.707	NA	4.55				6.35	13.5/13.2d	13.4	1.47	2015 Lower Harbor Debris Removal only. Location #59 Popes was collected but the media was found lying on the ground so it was not analyzed. Strong winds were experienced during most of the evening.
11/18/15	14.6	NS		NS	12.6	4.13	NS	3.11	6.27	14.0	NS	NS	13.7	NS	NS	35.4/38.4d	2.30			NS	NS	NS				2.13	NS	NS	NS	2015 Hydraulic Dredging in Upper Harbor Area T.
11/02/15	NS	NS		NS	NS	NS	NS	13.2	NS	NS	NS	NS	34.9	NS	NS	NS	NS			5.68	9.72	25.4				12.8	NS	10.9	23.5	2015 Lower Harbor Pre-debris removal.
10/14/15	22.6	16.4		17.4	4.48	13.0	42.8	19.5	7.32	23.6	NS	NS	17.4	NS	NS	186	0.352									11.4				2015 Hydraulic Dredging in Upper Harbor - Area S; Samples 25, 27, 30, 42, 55 and one blank analyzed on 10 day TAT for submarine power cable removal activities. The pump for the duplicate sample at Station #50 - Area D failed to run the equivalent time of the primary sample and was voided.
09/23/15	150	180		3.9	57/50d	8.1	19	16	50	63	NS	NS	42	NS	NS	300	7.4									7.5				2015 Hydraulic Dredging in Upper Harbor Area H.
8/26/2015	62	46/35d		22	19	34	84	13	21	35	NS	NS	32	NS	NS	1900	1.2									15				2015 Hydraulic Dredging in Upper Harbor - Area S.
7/21/2015	44	48		10	44	20	37	19	27	16	NS	NS	11/15d	NS	NS	NS	7.2									11				2015 Pre-Dredge Samples for the Upper Harbor. Location #56 - Acushnet Park can no longer be used as a sampling station due to frequent vandalism of pump and/or media.
6/3/2015	45	38		0.97	17	4.2	8.6	1.2	5.6	13/14d	NS	NS	16	NS	NS	NS	1.9	1.1								1.2	NS			2015 Off Season Data Collection.
4/22/2015	52	26		NA	20	3.4	16	7.6	12	0.016	NS	NS	3.6	NS	NS	NS	4.9	NS								5.7	NS			2015 Off Season Data Collection and Pre-dredge sampling for the Upper Harbor. Pump at Station #27 failed to run long enough to collect a viable sample so it was not analyzed.
4/6/2015	NS	NS		NS	NS	NS	NS	5.1	NS	NS	NS	NS	8.5	NS	NS	NS	NS	NS								2.2	NS			Lower Harbor CAD Cell Construction Phase II (Post Top of CAD Cell dredging); Pump at Station #50 failed to run the same duration as the duplicate so only the duplicate sample was analyzed. This sample is considered the primary sample so there is no duplicate for this post-dredge sampling event.



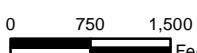

Table E-1
Ambient Air Monitoring Program - Total Detectable PCB Homologues

Sampling Date	PCB Concentration by Location (ng/m ³ in 24-hour time-weighted average) ¹																								Activity Period					
	24	25	25	27	30 Fibre	42	43	44	46	Area C			Area D			53	55	56	57	58 Pearl	59 Popes	60	61 South	62		63	64	65	66	67
	Aerovox	Manomet	Cliftex	Porter	Leather	NSTAR North	Veranda	Taber	Coffin	47	48	49	50	51	52	Dredge	Aerovox West	Acushnet Park	Riverside Park			Wash-burn	Fence	Century House		Boathouse	Pilgrim	LHCC Dredge	Huttleston	Revere
9/24/2008	NS	NS	NS		NS	NS	18		NS	NS	NS	42	NS	NS	NS	1.5	NS	NS	15											2008 Hydraulic Dredging.
8/21/2008	NS	NS	NS		NS	NS	31.7		122	NS	NS	123/11 6d	NS	2.85	NS	178	NS	NS	37.5											
7/16/2008	NS	NS	NS		NS	NS			NS	NS	NS	NS	NS	NS	NS	NA	68.6	NS												
7/8/2008	NS	NS	NS		NS	NS			NS	NS	NS	NS	NS	NS	NS	NA	8.7	NS												
6/25/2008	NS	NS	NS		NS	NS			NS	NS	NS	NS	NS	NS	NS	NA	5.52	NS												
6/19/2008	NS	NS	NS		NS	NS			NS	NS	NS	NS	NS	NS	NS	NA	8.9	NS												
6/12/2008	NS	NS	NS		NS	NS			NS	NS	NS	NS	NS	NS	NS	NA	7.3	NS												
6/8/2008	NS	NS	NA		NS	NS			NS	NS	NS	NS	NS	NS	NS	NA	25.9	NS												
11/9/2007	19.7	NS	20.2		NS	15.7			1.86	9.29	NS	NS	NS	4.39	NS	NA	NS	NS												
9/18/2007	176	NS	120		NS	16.3			21.4	57.1	NS	NS	48.7	NS	NS	130	NS	NS												
8/21/2007	282	NS	147		NS	19.2			36.1	46.9	NS	NS	36.7	NS	NS	138	NS	NS												
11/19/2006	41.1	NS	0.14		NS	NS			4.05	NS	NS	81.4	2.6	NS	NS	NA	NS	NS												
10/6/2006	2,360	NS	451		NS	NS			108	NS	NS	157	NS	NS	197	13,400	NS	NS												
8/31/2006	1,630	NS	176		NS	NS			70.4	39.2	NS	NS	NS	67.3	NS	2,340	NS	NS												
12/29/2005	83.2	NS	10.9		NS	21.4			65.1	7.42	NS	NS	NS	NS	2.18	NS	NA	10.8	13.5											
11/18/2005	15.9	NS	0.12		NS	63.6			0.14	NS	0.139	3.71	NS	NS	NS	913	0.12	3.76												
10/28/2005	15.4	NS	NS		NS	32.3			2.06	NS	4.61	12.3	0.01	NS	NS	505	3.97	2.73												
10/6/2005	1,820	NS	251		NS	119			130	NS	60.1	114	81.7	NS	NS	6,320	222	180												
9/29/2005	383	NS	104		NS	5.28			124	NS	17.3	44.2	24.2	NS	NS	391	87	77.9												
9/23/2005	178	NS	35.2		NS	83.3			115	NS	19.1	97	0.26	NS	NS	780	2.64	23.9												
9/15/2005	1490	NS	58.2		NS	22.5			99.8	NS	14.9	83.6	0.52	NS	NS	1280	37.6	102												
8/11/2005	216	NS	103		NS	25.9			37.2	NS	NS	29.3	NS	NS	21.3	NA	42.1	49.9												
12/3/2004	30	NS	27		NS	40			15	22	NS	26	22	NS	31	NA	9.33	1.52												
11/5/2004	578	NS	61		NS	73			80	NS	NS	28	NS	NS	NS	351	28.4	39.1												
10/19/2004	559	NS	259		NS	NS			36	47	48	66	17	74	100	704	NS	NS												
9/28/2004	9,560	NS	423		NS	NS			342	35	165	207	80	75	115	2,730	NS	NS												
9/23/2004	588	NS	97		NS	NS			5	7	10	17	6	5	19	1,210	NS	NS												
9/14/2004	1,450	NS	229		NS	NS			48	64	64	86	38	39	61	98	NS	NS												
9/9/2004	1,020	NS	167		NS	NS			145	28	37	56	20	16	47	723	NS	NS												
6/29/2004	2,290	NS	NS		NS	NS			NS	NS	NS	NS	NS	56	NS		NS	NS												
March-May 2000	76	NS	35		NS	29			35	61	61	61	6.8	6.8	6.8		NS	NS												
Dec 1999-Feb 2000	32	NS	3.2		NS	9.9			3.2	89	89	89	3.4	3.4	3.4		NS	NS												
Sept-Nov 1999	67	NS	22		NS	24			22	43	43	43	5.9	5.9	5.9		5.2	5.2												
June-August 1999	130	NS	46		NS	31			46	33	33	33	12	12	12		NS	NS												

Notes:
d = field duplicate result
NA = sample collected but not analyzed
ng/m³ = nanograms per cubic meter of air
NS = not sampled
PCB = polychlorinated biphenyl
ND = no detections (non-detect)
Sample station with gray blocking is a newer station added to the air sampling program or discontinued station (no activity).
P = Pending results
¹24-hour time-weighted average does not apply to Stations #53 and #65 (dredge/barge) which are on a 8-hr collection period

Station	Location
24	Aerovox
25	Manomet
27	Porter
30	Fibre Leather
42	NSTAR N
43	Veranda
44	Taber
46	Coffin
47	Area C Downwind
50	Area D Downwind
53	Dredge
55	Aerovox West
56	Acushnet Park
57	Riverside Park
58	Pearl
59	Popes
60	Washburn
62	Century House
64	Pilgrim
65	CAD Cell Dredge
66	Huttleston
67	Revere



Legend  EPA CAD CELL	Aerial Photography MASSGIS 2014   1:21,600	 Available Ambient Air Sampling Station Locations New Bedford Harbor Superfund Site <small>NAME: jacobn Date: 11/2017</small> Figure
---	---	--

Path: Y:\NBH\Projects\358G\00\12070104AcGIS\NBH_ambient_sampling_stations_20170304.mxd