

Parker Street Waste Site

Community Update

Photo Credit: Nancy Durfee

Introduction

The Parker Street Waste site (PSWS) has been defined by the U.S. Environmental Protection Agency (EPA) to include about 122 acres in New Bedford, Massachusetts. The site generally includes the area bounded by Durfee Street to the north, Liberty Street and the Oak Grove Cemetery to the east, North Street to the south, and Summit Street to the west. New Bedford High School, Keith Middle School, the Walsh and Andre McCoy athletic fields, homes, apartments and businesses are located within the site. EPA recently completed the cleanup of many residential properties at the Site, with technical assistance from the Massachusetts Department of Environmental Protection (MassDEP).

The PSWS Community Updates began in Fall 2010 as a tool to inform and involve the Parker Street community in the neighborhood cleanup. This last issue of the Community Update serves to highlight EPA's completed work on residential properties and communicate the status of the non residential areas of the PSWS. With EPA's completion of work on the residential properties, this will be the final update produced by EPA's Technical Assistance Services for Communities (TASC) program. TASC provides independent contractors who assist communities in understanding technical information about nearby hazardous waste sites. EPA has worked at the site in cooperation with the City of New Bedford, MassDEP, the Agency for Toxic Substances and Disease Registry (ATSDR), and the Massachusetts Department of Public Health, Bureau of Environmental Health (MDPH/BEH).

Site investigations and actions at the PSWS have been extensive, and for that reason, taken quite a bit of time. Staff at all agencies have worked on the PSWS Project every day over these years. EPA thanks the community, especially those heavily involved in the neighborhood interests of the project, for your input and advice, and for continuing to work with the agencies as remaining issues are understood and resolved. Community interests and involvement will continue to be an important part of EPA's future presence in New Bedford.

PSWS Community Meeting

Date: December 4, 2012

Location: New Bedford Main Library 613 Pleasant Street Meeting Room

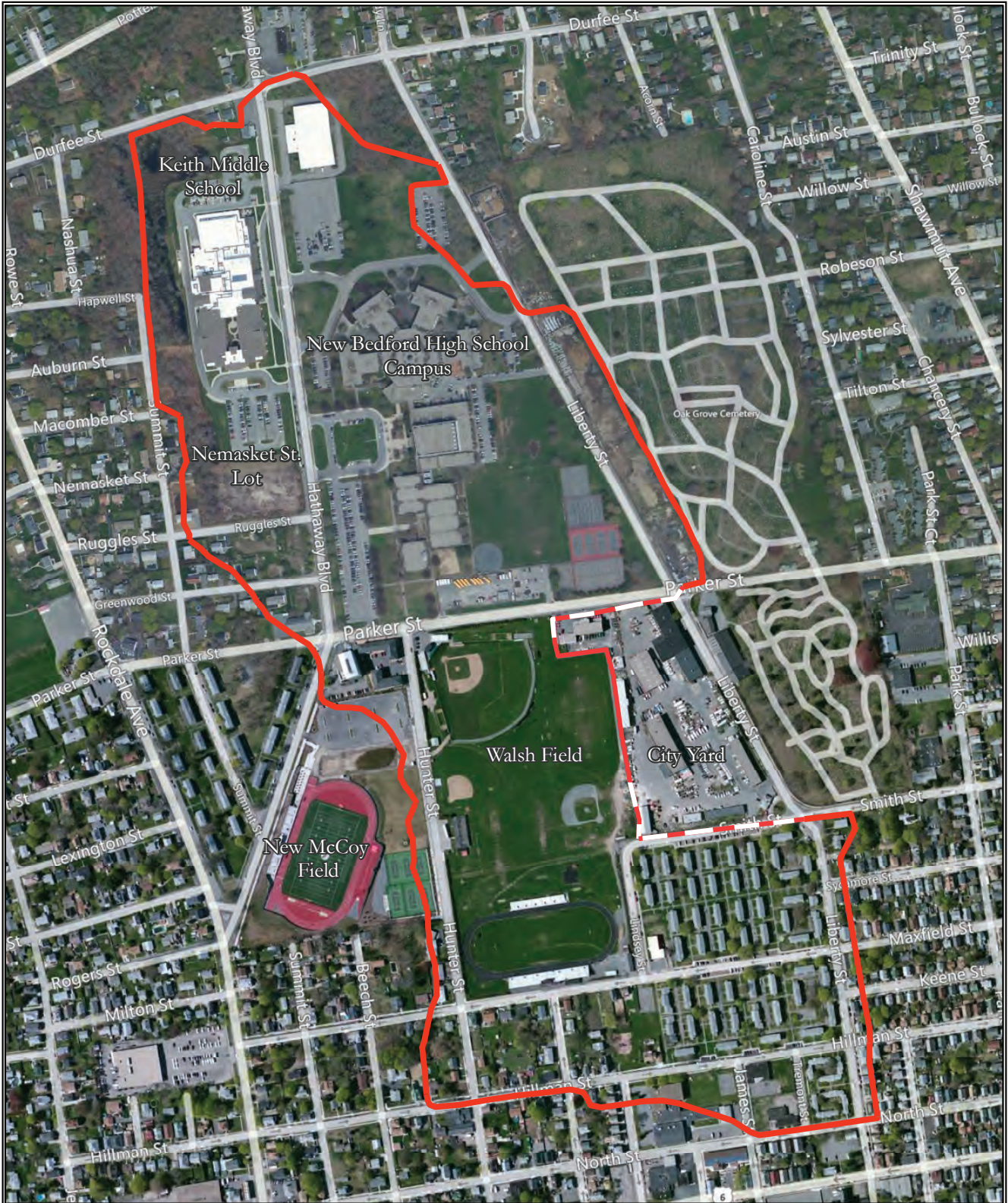
Time: 6-8 p.m.

Para obter uma versão traduzida deste documento, por favor entrar em contato com Kelsey O'Neil, EPA • (617) 918-1799 Oneil.kelsey@epa.gov

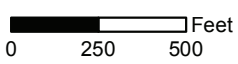
Para obtener una versión traducida de este documento, favor de comunicarse con Kelsey O'Neil, EPA • (617) 918-1799 Oneil.kelsey@epa.gov



This document has been funded in whole or in part through the EPA's TASC program. Its contents do not necessarily reflect the policies, actions or positions of the EPA, MassDEP, MDPH/BEH or the City of New Bedford.



- - - Boundary Requiring Further Evaluation
- Confirmed/Inferred Fill Boundary



Parker Street Waste Site New Bedford, MA





Created by the US EPA Region 1
GIS Center on 10/18/2012.
Map Tracker ID:8678

PARKER STREET WASTE SITE AREAS





EPA and MassDEP initiated a preliminary assessment/site inspection (PA/SI) on areas along the periphery of the previously defined site boundaries on April 26, 2010. A PA/SI is conducted to investigate the site conditions. Properties along the outside of the first defined site boundaries were sampled to determine if contamination existed on a greater number of properties in the neighborhood and to determine if that contamination posed a threat to human health and/or the environment.

The site investigation identified several residential and commercial properties with polychlorinated biphenyls (PCBs), polycyclic aromatic hydrocarbons (PAHs), and/or heavy metals in soils at or near the surface. After evaluating the sampling results from the site investigation, MassDEP identified several properties with elevated levels of contamination that required cleanup actions; and subsequently recommended that EPA undertake a time-critical removal action to address these properties with contaminated soil.

The table below summarizes the current cleanup status of each area and the parties responsible for cleanup activities. In general, the City is cleaning up properties currently owned by the City, with oversight from MassDEP. EPA cleaned up residential areas of the site through its Superfund Removal Program, pursuant to the Comprehensive Environmental Response, Compensation, and Liability Act (CERCLA), and its implementing regulations, the National Contingency Plan. EPA is providing oversight for the cleanup of areas contaminated with polychlorinated biphenyls (PCBs), pursuant to the Toxic Substances Control Act (TSCA).

Area	Status	Acting Party for Cleanup
 <p>New Bedford High School</p>	<p><i>Inside the school, PCB indoor remediation</i> Cleanup activities are ongoing. The City filed a deed restriction for room A-213-4 to document PCBs over one part per million (ppm) in remaining paint covered by two layers of paint and drywall. Further assessments are underway for rooms A-203-2, A-315-1 and A-110-1.</p> <p><i>Outside the school, school remediation</i> Approximately 8,000 cubic yards of contaminated soil have been removed since February 2011. Expanded paving/exposure barriers are being installed to prevent direct contact with impacted soil. The development of a solar power facility between the parking lots north of the school building is pending.</p> <p><i>Ground water in the mechanical room</i> Cleanup is underway; the City is coordinating with MassDEP and EPA on the final remedy.</p>	<p>The City, with oversight from MassDEP and EPA for PCBs cleanup</p>
 <p>Keith Middle School</p>	<p>Cleanup was done on the Keith Middle School land prior to building the School. The school grounds have been capped with clean backfill. More information about the cap is available at: http://www.newbedford-ma.gov/McCoy/2010/Final_LTMMIP_Fact%20Sheet_9.21.10.pdf</p> <p>The City periodically monitors the cap, indoor air, vent stacks, ground water and wetland sediment. Monitoring results are available at: http://www.newbedford-ma.gov/McCoy/sitemap/kms.html</p>	<p>The City</p>

Area	Status	Acting Party for Cleanup
 <p>Wetlands</p>	<p>The City removed PCB-impacted sediments in 2006. Routine sampling in 2008 showed levels of PCBs higher than the EPA action level. Additional assessments were conducted to determine the nature and extent of the PCB contamination.</p> <p>The City proposed cleanup of the wetland west of Keith Middle School in the August 2012 Phase III Remedial Action Plan. The cleanup includes exposure barriers (capping), digging up/disposal (removal), and activity and use limitations. Work on the cleanup of the wetlands has not begun and is still in the design phase.</p>	<p>The City, with oversight from MassDEP and EPA for PCBs cleanup</p>
 <p>Acquired Properties</p>	<p>The City issued a draft Release Abatement Measure Plan for these properties. It proposes exposure barriers (soil/pavement), digging up or disposal (removal), and activity and use limitations for cleanup.</p> <p>The City recently sought neighborhood feedback regarding the cleanup and potential future use of these properties. The discussion focused on the potential development of a solar power facility, but reuse of the properties has not yet been determined.</p>	<p>The City, with oversight from MassDEP and EPA for PCBs cleanup</p>
 <p>Nemasket Street Lots</p>	<p>A short-term solution is proposed to be implemented under the Massachusetts Contingency Plan (MCP) until resources can be put in place to achieve a permanent cleanup solution. Updates will be available at: http://www.newbedford-ma.gov/McCoy/sitemap/sitemap.html</p>	<p>The City, with oversight from MassDEP and EPA for PCBs cleanup</p>
 <p>Walsh Field</p>	<p>The City removed several areas of impacted soil and replaced the areas with clean backfill.</p> <p>The City filed a Class A Response Action Outcome (RAO) Site Closure Report with MassDEP. Source material has been reduced by digging it up and disposing of it. An activity and use limitation (AUL) controls remaining impacted soils (those below three feet or under paving) and no further cleanup activities are required.</p>	<p>The City, with oversight from MassDEP</p>

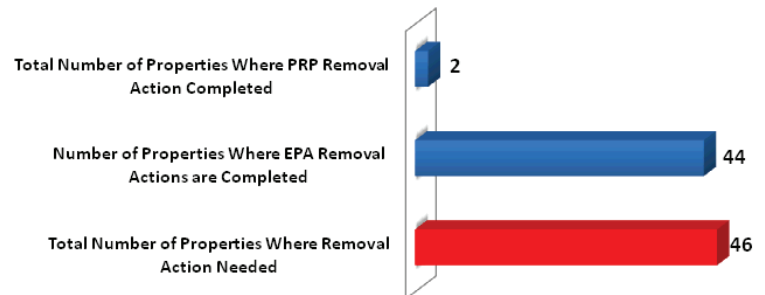
Area	Status	Acting Party for Cleanup
 <p data-bbox="126 464 315 499">New McCoy Field</p>	<p data-bbox="402 199 1227 268">The City removed several areas of soil in the top three feet of soil that had levels of contamination above the State accepted level for exposure.</p> <p data-bbox="402 310 1198 422">An activity and use limitation was developed for the property to prevent potential exposure to soils below the top three feet of soil and beneath pavement and building structures.</p> <p data-bbox="402 464 1203 575">Following soil removal, the dug-up areas were backfilled with clean fill, completing cleanup activities in the area. No other response actions are necessary.</p>	<p data-bbox="1308 199 1482 310">The City, with oversight from MassDEP</p>
 <p data-bbox="126 850 228 886">City Yard</p>	<p data-bbox="402 585 1281 697">Discussions are on-going between the City and MassDEP regarding the City Yard. It has not yet been determined if the City Yard is part of the Parker Street cleanup.</p>	<p data-bbox="1308 585 1482 697">The City, with oversight from MassDEP</p>
 <p data-bbox="126 1178 334 1247">Private residential properties</p>	<p data-bbox="402 913 1240 1058">EPA and MassDEP sampled 88 properties during site investigations. 46 properties were found to have site-related contamination at elevated levels that posed a significant contact threat/risk and warranted surface soil removal. All private properties have been cleaned up.</p>	<p data-bbox="1308 913 1482 1136">EPA, Private owner performed cleanup at 2 properties with EPA oversight</p>
 <p data-bbox="126 1564 380 1600">Commercial properties</p>	<p data-bbox="402 1299 1252 1369">Sampling has been conducted on commercial properties. MassDEP will work with property owners to determine appropriate next steps.</p>	<p data-bbox="1308 1299 1482 1369">Property owners and MassDEP</p>

EPA SAMPLING CONDUCTED ON PRIVATE PROPERTIES

EPA completed sampling (testing) and cleanup activities on the residential properties affected by the Parker Street Waste Site in late summer of 2012. Cleanup activities included removal and proper disposal of contaminated soils, installing clean soil and loam, landscaping and restoring vegetation. EPA teams worked with each property owner to restore and landscape the properties to the extent possible to look as they did before the removal work. The figures show the total number of properties sampled and those cleaned up.



PSWS REMOVAL ACTION SUMMARY OVERVIEW



HEALTH ASSESSMENTS

In September 2011, the Massachusetts Department of Public Health (MDPH) released two draft reports related to the PSWS for public comment:

1. *Health Consultation: Evaluation of Serum PCB Levels and Cancer Incidence Data, Parker Street Waste Site Neighborhood, New Bedford.*
2. *Health Consultation: Evaluation of Indoor Environmental Conditions and Potential Health Impacts, New Bedford High School.*

Two presentations were made when the draft reports were released – one at the New Bedford High School and one at the Keith Middle School – to inform the public about the findings. Public comments were accepted over a 6-week period. The public comment draft reports, presentation slides, and question and answer sheets in English, Spanish and Portuguese are available at: <http://www.mass.gov/eohhs/consumer/community-health/environmental-health/investigations/new-bedford.html>.

MDPH is currently responding to public comments received on the health reports. All public comments are being addressed and responded to. Once a response to comments is completed, a summary of the final reports and response to comments will be distributed to all interested individuals and organizations and the full reports and response to comments will be available on the MDPH website at <http://www.mass.gov/eohhs/consumer/community-health/environmental-health/investigations/new-bedford.html>.

GLOSSARY

- **Comprehensive Environmental Response, Compensation, and Liability Act (CERCLA):** A 1980 act of Congress, as amended, that: authorizes EPA to conduct response actions to address sites contaminated with hazardous substances; and provides for the liability of potentially responsible parties.
- **Massachusetts Contingency Plan (MCP):** A body of regulations designed to streamline and accelerate the assessment and cleanup of releases of hazardous materials to the environment. The MCP is implemented by the MassDEP.
- **Parker Street Waste Site (PSWS):** The project area, which includes New Bedford High School, Keith Middle School, the Heltand Memorial Skating Rink, Walsh and Andre McCoy athletic fields, residential properties, commercial properties, and two private apartment complexes.
- **Polychlorinated biphenyls (PCBs):** Mixtures of chlorinated compounds that were used in electrical equipment because they transferred heat well. EPA banned the use of PCBs in 1977 because of evidence they can build up in the environment and cause harmful health effects.
- **Polycyclic Aromatic Hydrocarbons (PAHs):** Compounds that are produced as byproducts of burning fuel. They can also be found in cooked foods, such as grilled or barbecued food. Some PAHs can cause harmful health effects.
- **Public Health Consultation:** A review of available information or collection of new data to respond to a specific health question about a potential environmental hazard. Health consultations are focused on a specific exposure issue.
- **Remediation:** A plan or action to remove pollution or contaminants from a site for the general protection of human health.
- **Toxic Substances Control Act (TSCA):** A 1976 act of Congress that regulates the introduction of new or already existing chemicals and specifically includes PBCs.

CONTACT US

This *Update* is the last in a series. Please let us know what you think of this issue by emailing ParkerStreetUpdate@gmail.com or calling Kirby Webster at (434) 975-6700 x 281.

For more information about Parker Street activities:

EPA's Parker Street Waste Site website is available at: <http://www.epa.gov/region1/parkerstreet/>

If you have questions regarding environmental contamination or site cleanup, please contact:

Kelsey O'Neil, U.S. EPA New England, Community Involvement Coordinator at (617) 918-1799 or Oneil.Kelsey@epa.gov

Molly Cote, MassDEP Southeastern Region, Project Manager at (508) 946-2792 or Molly.Cote@state.ma.us

If you have questions regarding health or health studies, please contact:

Jan Sullivan, Massachusetts Department of Public Health, Bureau of Environmental Health (MDPH/BEH) at (617) 624-5757 or Jan.Sullivan@state.ma.us

Tarah Somers, Agency for Toxic Substances and Disease Registry (ATSDR) at (617) 918-1493 or Somers.Tarah@epa.gov