

## EPA Public Information Meeting, New Bedford Harbor Site Update:

Each agenda item will involve a short presentation by the project manager or EPA contractor and will leave time for public questions and answers. Presenters will attempt to answer questions right away, however certain questions require additional follow-up and we will work to do so following the meeting.

November 3, 2016  
New Bedford Whaling National Historical Park  
33 Williams Street New Bedford  
6 pm – 8 pm

- ❖ 2015/16: Ongoing and completed work
- ❖ 2017 Planning: A look ahead
  
- Welcome and Introductions 6:00 – 6:05 pm  
*Kelsey O'Neil, EPA*
- Contract Status Update 6:05 – 6:20 pm
  - Final Remedial Action Contract Issuance  
*Ellen Iorio, Army Corp of Engineers*
- Lower Harbor Dredging Progress Update 6:20 – 6:50 pm
  - Lower Harbor CAD Cell
  - Intertidal Sampling Status  
*Dave Lederer, EPA*
- Upper Harbor Progress Update 6:50 – 7:10 pm
  - Planning implementation process
  - Lot 265 (across from Market Basket)
- Upcoming Riverside Park Shoreline Work 7:10 – 7:40 pm  
*Dave Dickerson, EPA*
- Community Involvement Update 7:40 – 8:00 pm  
*Kelsey O'Neil, EPA*

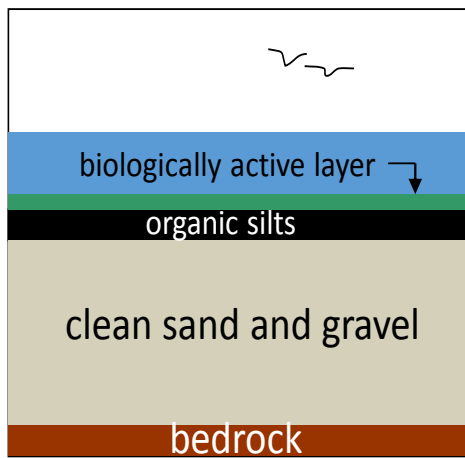
# Contract Status Update

Ellen Iorio, *Army Corp of Engineers*

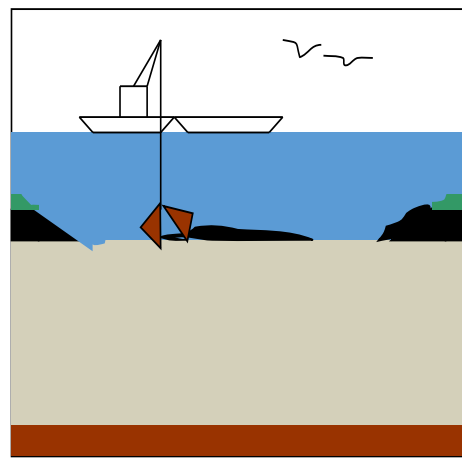
# New Bedford Harbor Superfund Site

November 3, 2016

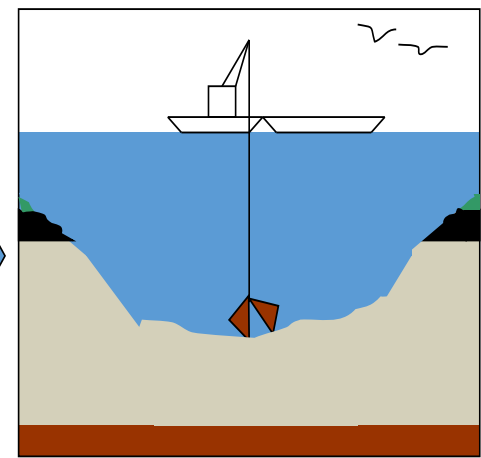
David Lederer, Remedial Project Manager



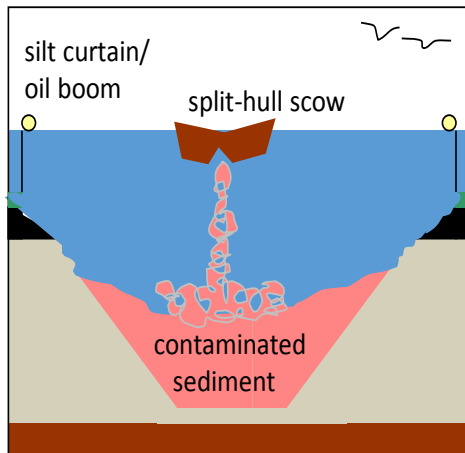
**1.** Harbor bottom as is



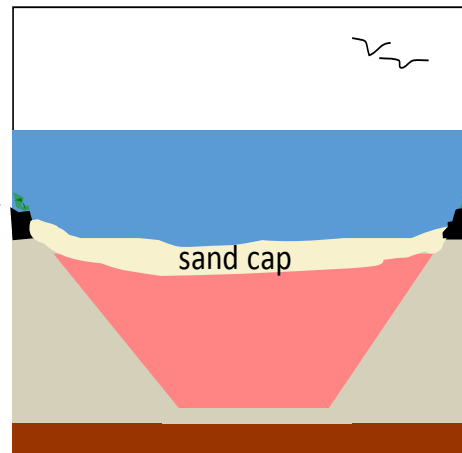
**2.** Excavation of top silts



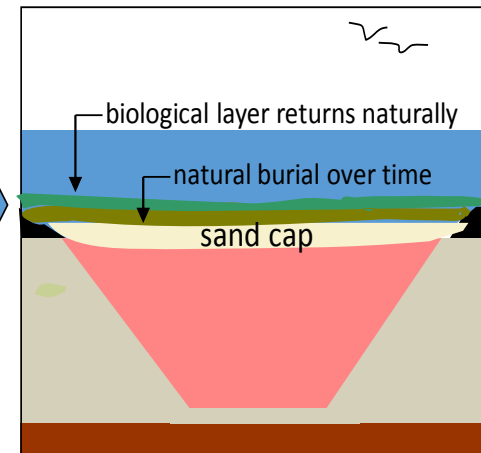
**3.** Excavation of clean sand



**4.** Placement of sediments



**5.** Sand cap in place

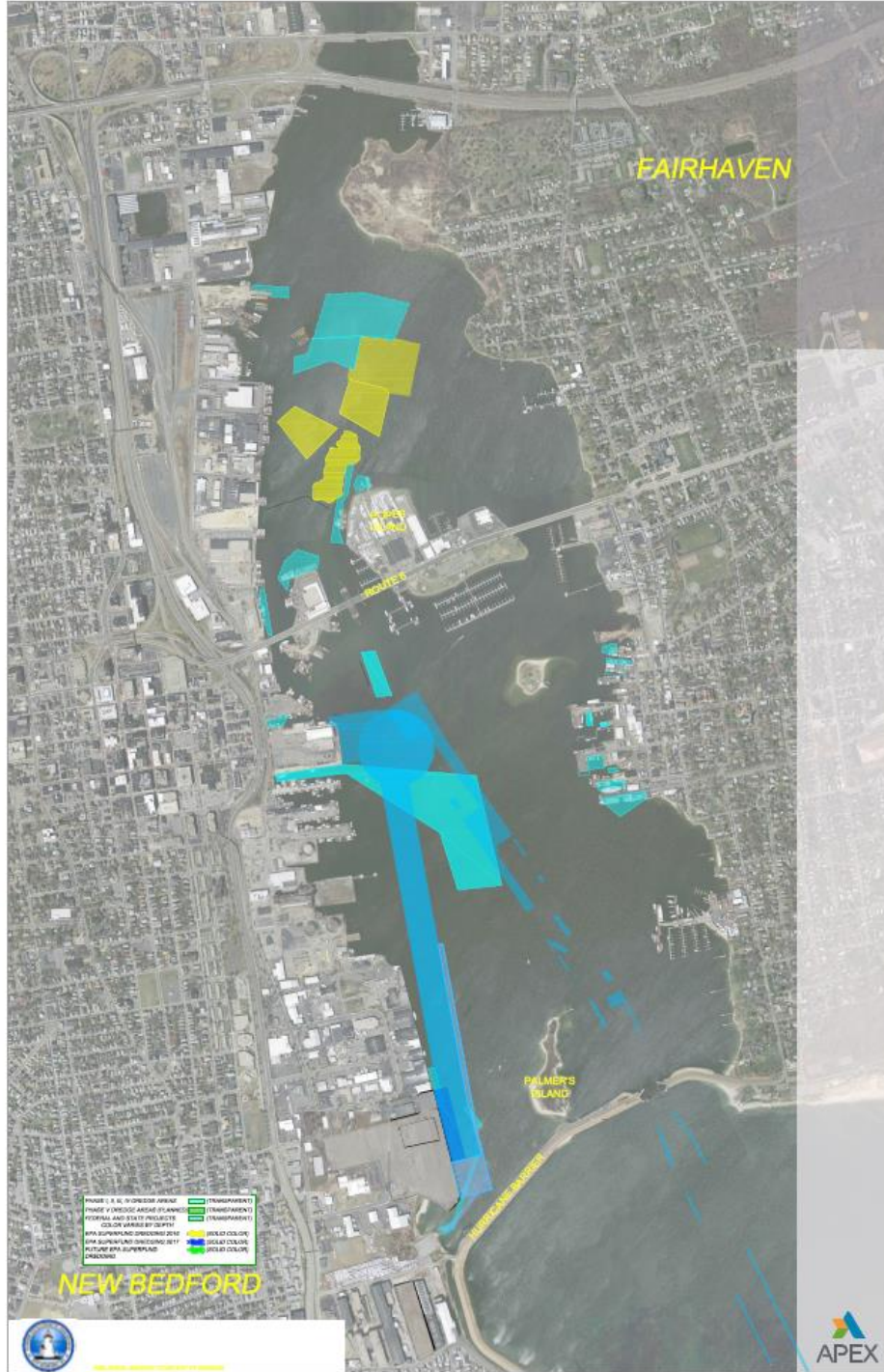


**6.** Surface fills in over time

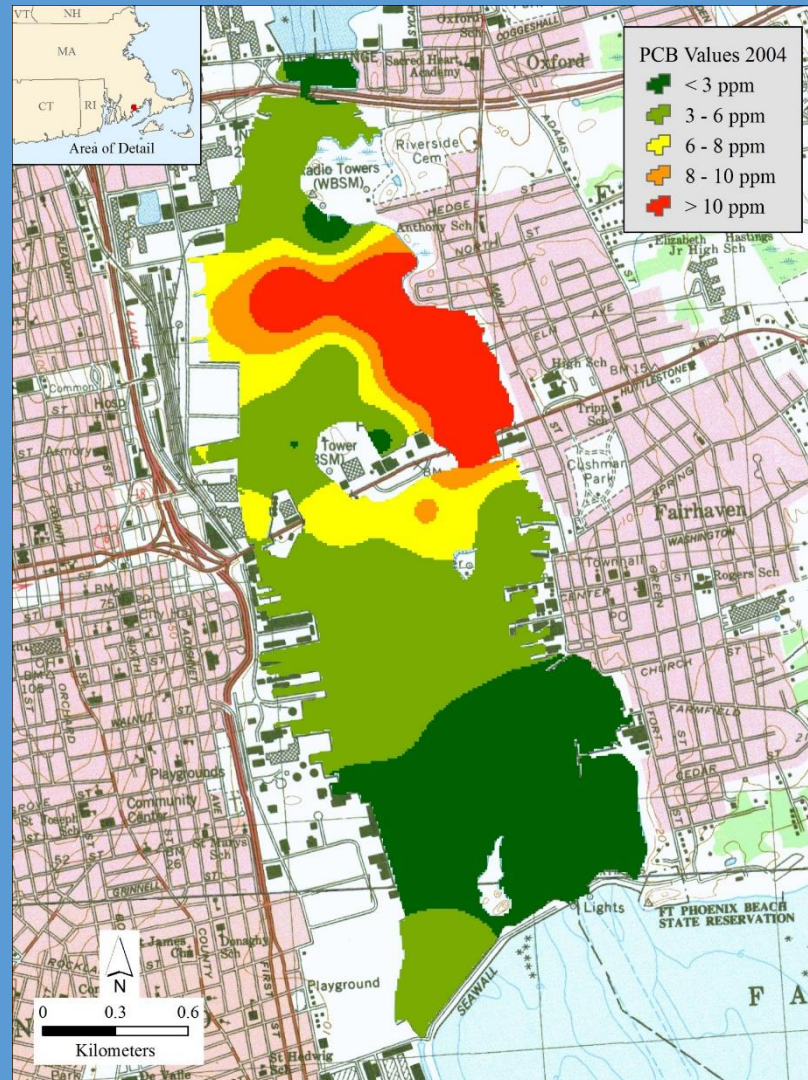
## What is a confined aquatic disposal cell?

For illustrative purposes only – NOT TO SCALE

SER  
Dredging  
2004-2014

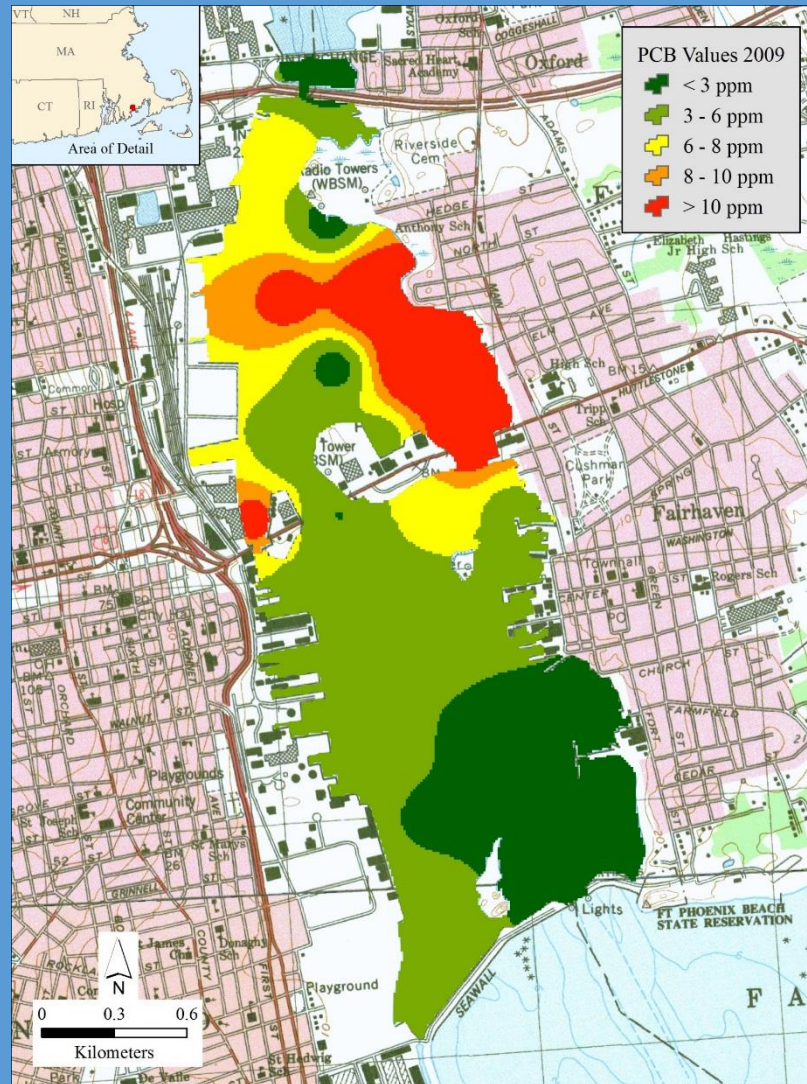


# LTM 2004 Lower Harbor Surficial Sediment [PCB]s Results (18 NOAA Congeners)



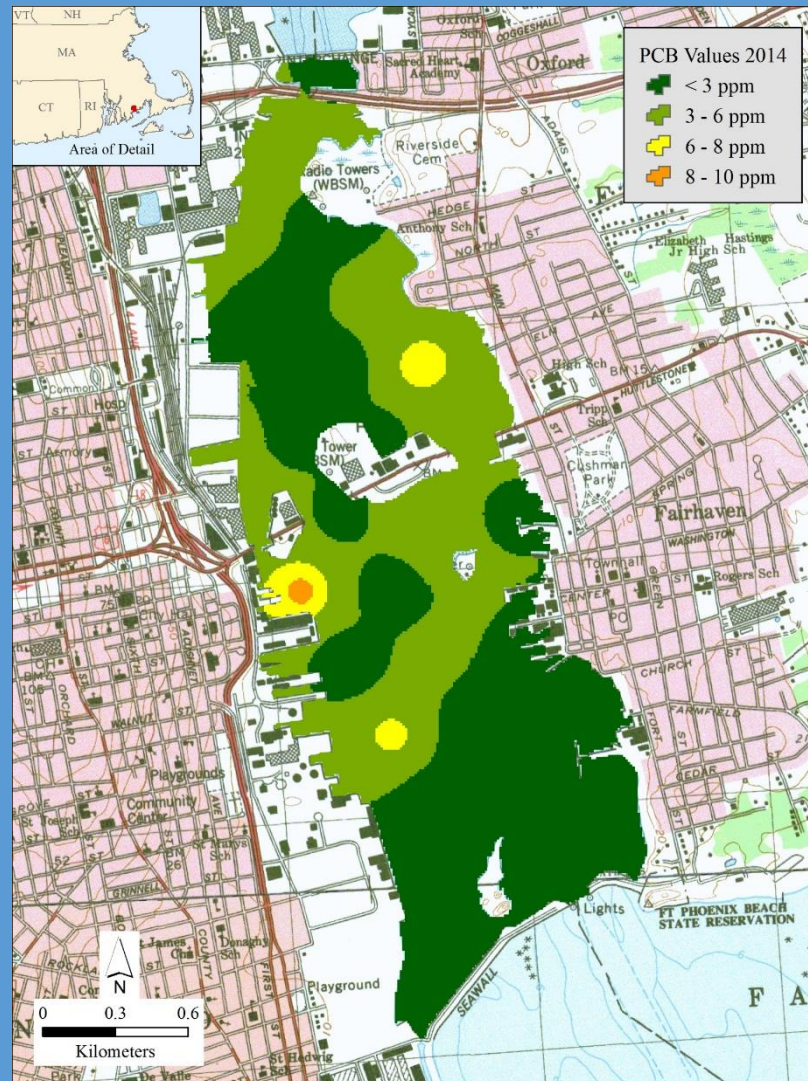
2004 Average [NOAA-18-PCB] = 5.1 ppm

# LTM 2009 Lower Harbor Surficial Sediment [PCB]s Results (18 NOAA Congeners)



2009 Average [NOAA-18-PCB] = 4.8 ppm

# LTM 2014 Lower Harbor Surficial Sediment [PCB]s Results (18 NOAA Congeners)

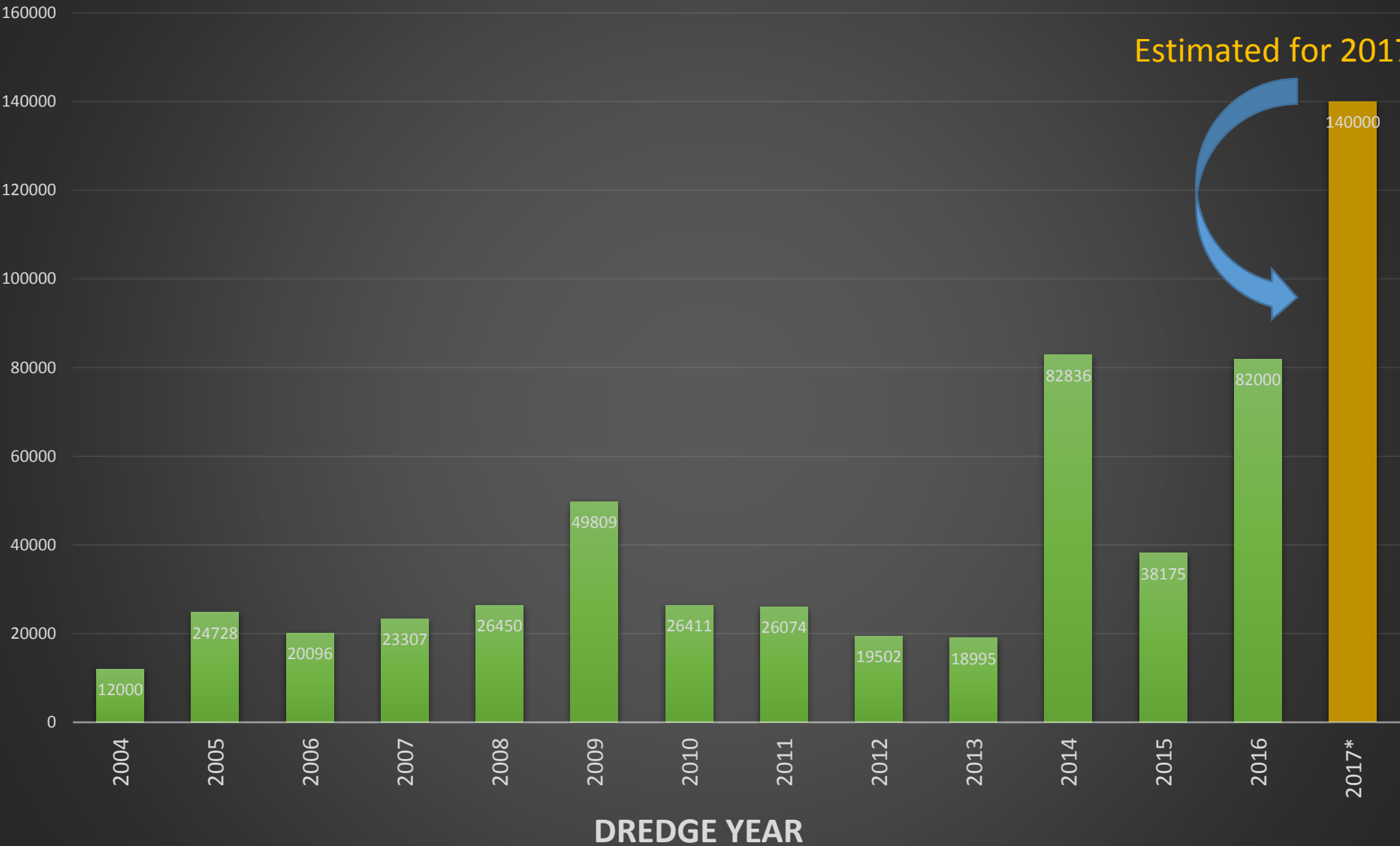
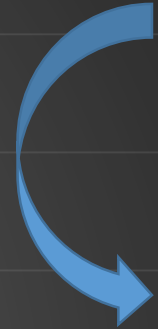


2014 Average [NOAA-18-PCB] = 2.8 ppm; 21 of 29 stations lower than 2009 data set.

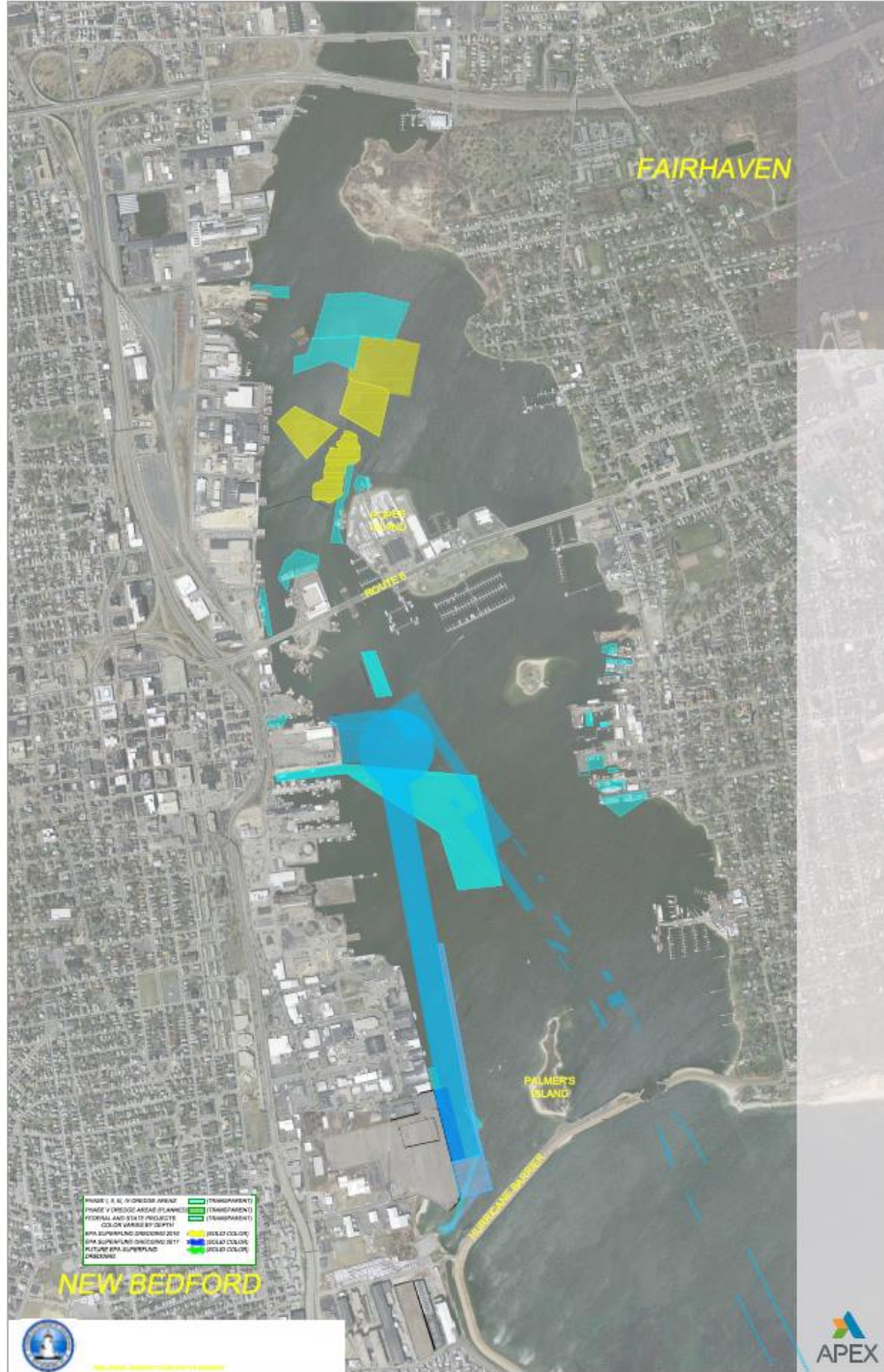


# 2004-2016 Volume Dredged from New Bedford Harbor (cubic yards)

Estimated for 2017



Jan 2016





# LHCC Progress Report...\*

- Projected total dredging in Lower Harbor for 2016 is about 82,000 cubic yards.
- Dredge approximately 30,000 cubic yards from Upper Harbor this winter.
- Dredge approximately 137,000-169,000 yards from the Lower Harbor tentatively in 2017.
- After Dredging Complete, Consolidation, and Capping (timing to be determined)

\*subject to potential change



WWW. POSEIDON

WWW. POSEIDONBARGE.COM

WWW. POSEIDONBARGE.COM

WWW. POSEIDONBARGE.COM

866 99-BARG

BOW

BOW



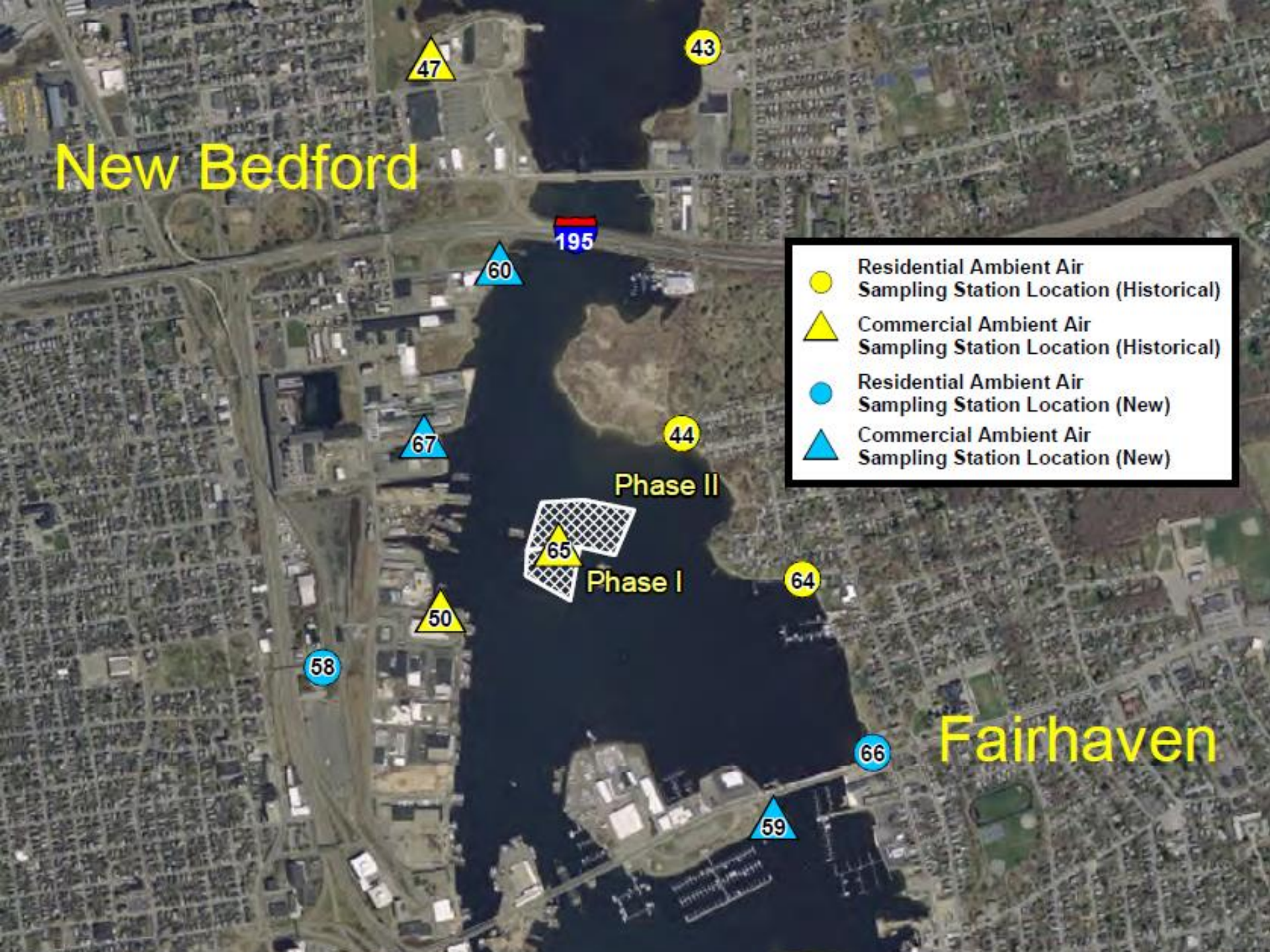
**1** Mechanical dredging in area H36 within Cozy Cove.



**2** Transporting the scow and dredge to dredge area



New Bedford

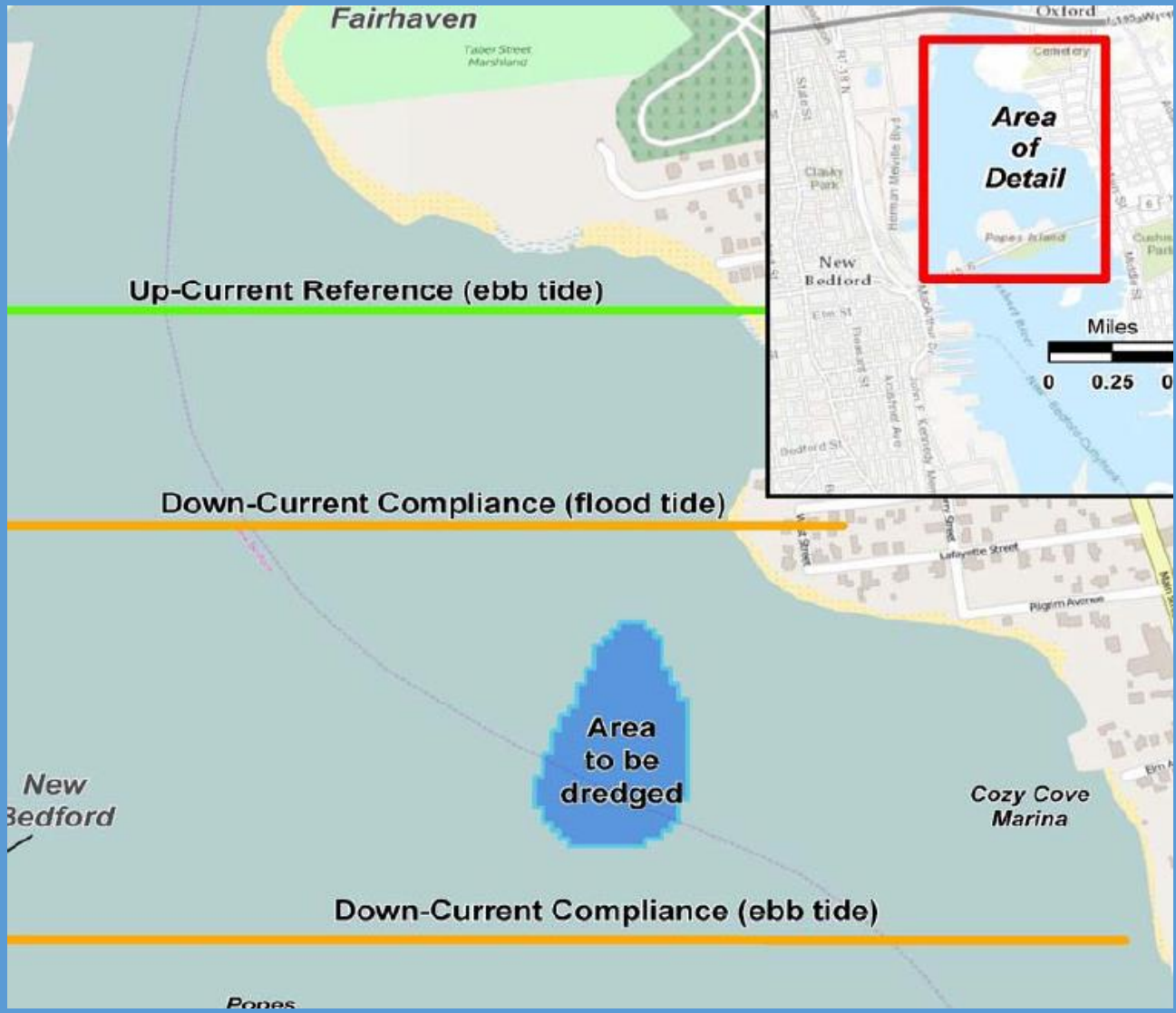


- Residential Ambient Air Sampling Station Location (Historical)
- ▲ Commercial Ambient Air Sampling Station Location (Historical)
- Residential Ambient Air Sampling Station Location (New)
- ▲ Commercial Ambient Air Sampling Station Location (New)

Phase II

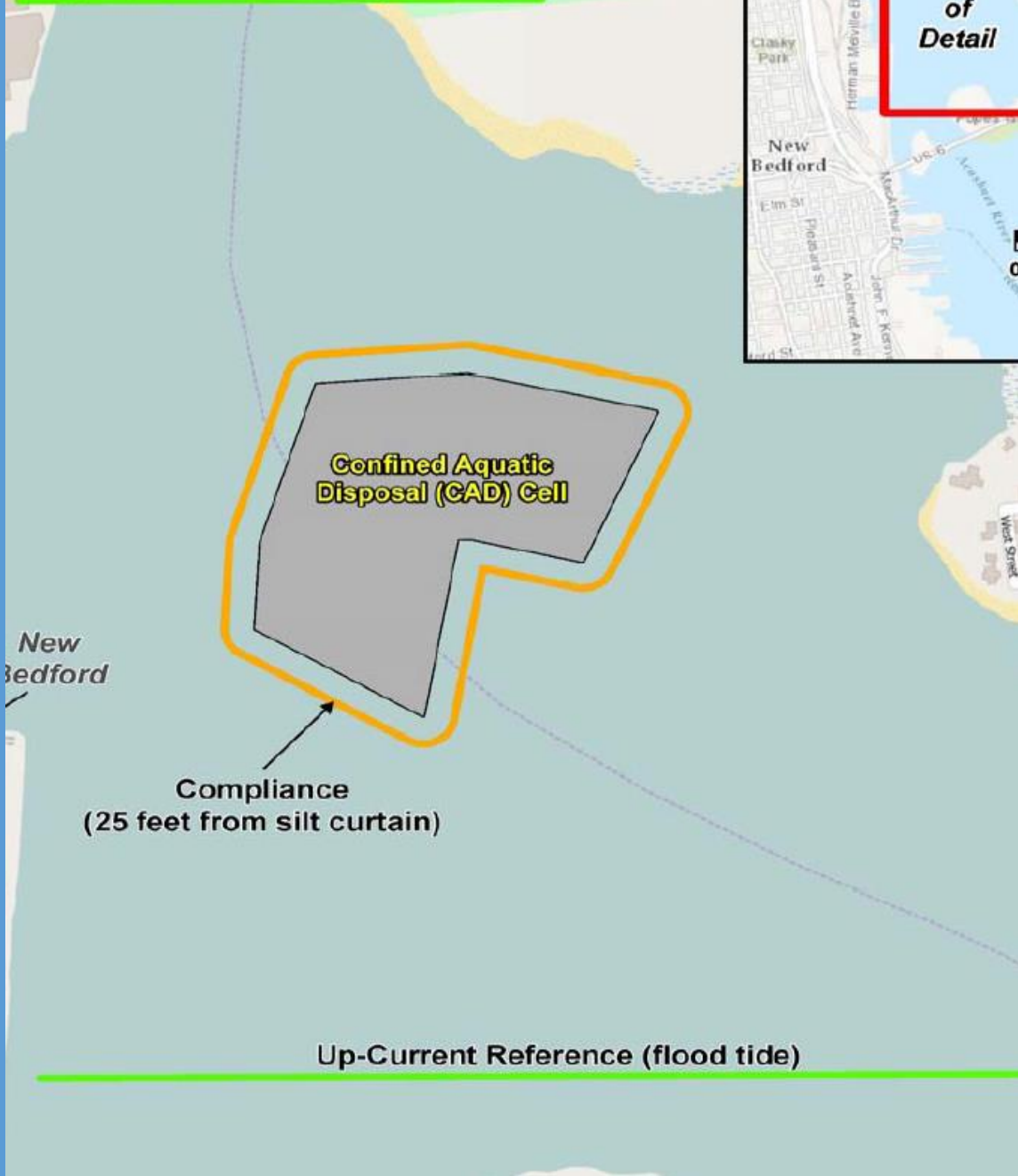
Phase I

Fairhaven





**Up-Current Reference (ebb tide)**



**Area of Detail**

**Confined Aquatic Disposal (CAD) Cell**

New Bedford

Compliance  
(25 feet from silt curtain)

**Up-Current Reference (flood tide)**

# Intertidal Status

## 2016 Intertidal Sediment Cleanup and Restoration of the Area Between the Coggeshall Street Bridge and Sawyer Street (Parcel 265)

- Cleanup started January 2016 and completed April 2016.
- Restoration completed June 2016
- A total of 4,872 CY of contaminated sediment was removed
- Backfill material was placed at the site during restoration.
- Replanting of salt marsh grass restored low marsh cover.



Sevenson

Sevenson  
EQUIPMENT RENTALS  
1000 Park Ave. East

1006E

Young

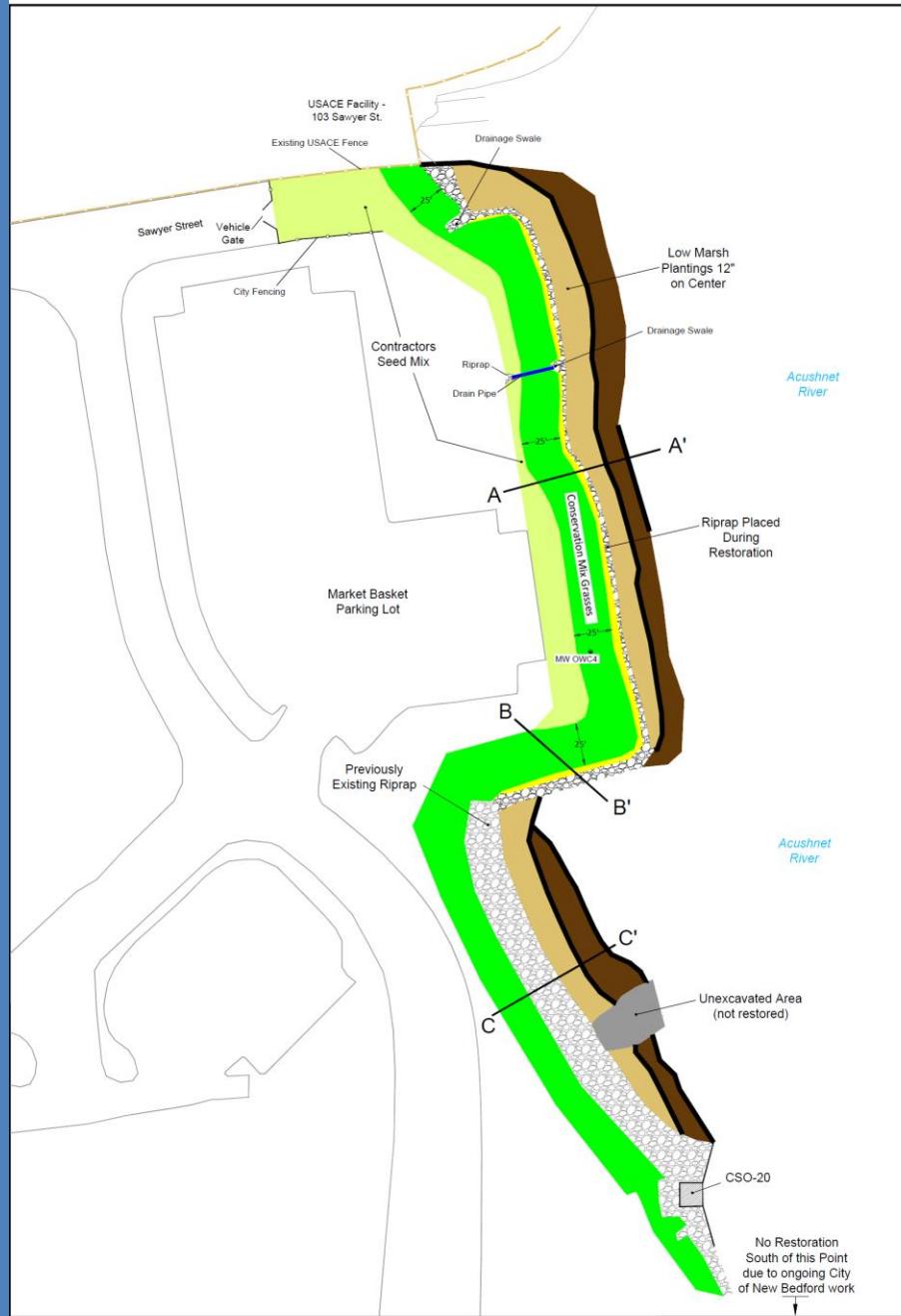












**JACOBS**

Parcel 265  
As-Built Planting Zones  
New Bedford Harbor Superfund Site

- Intertidal Sampling Status

- Planning Implementation Process