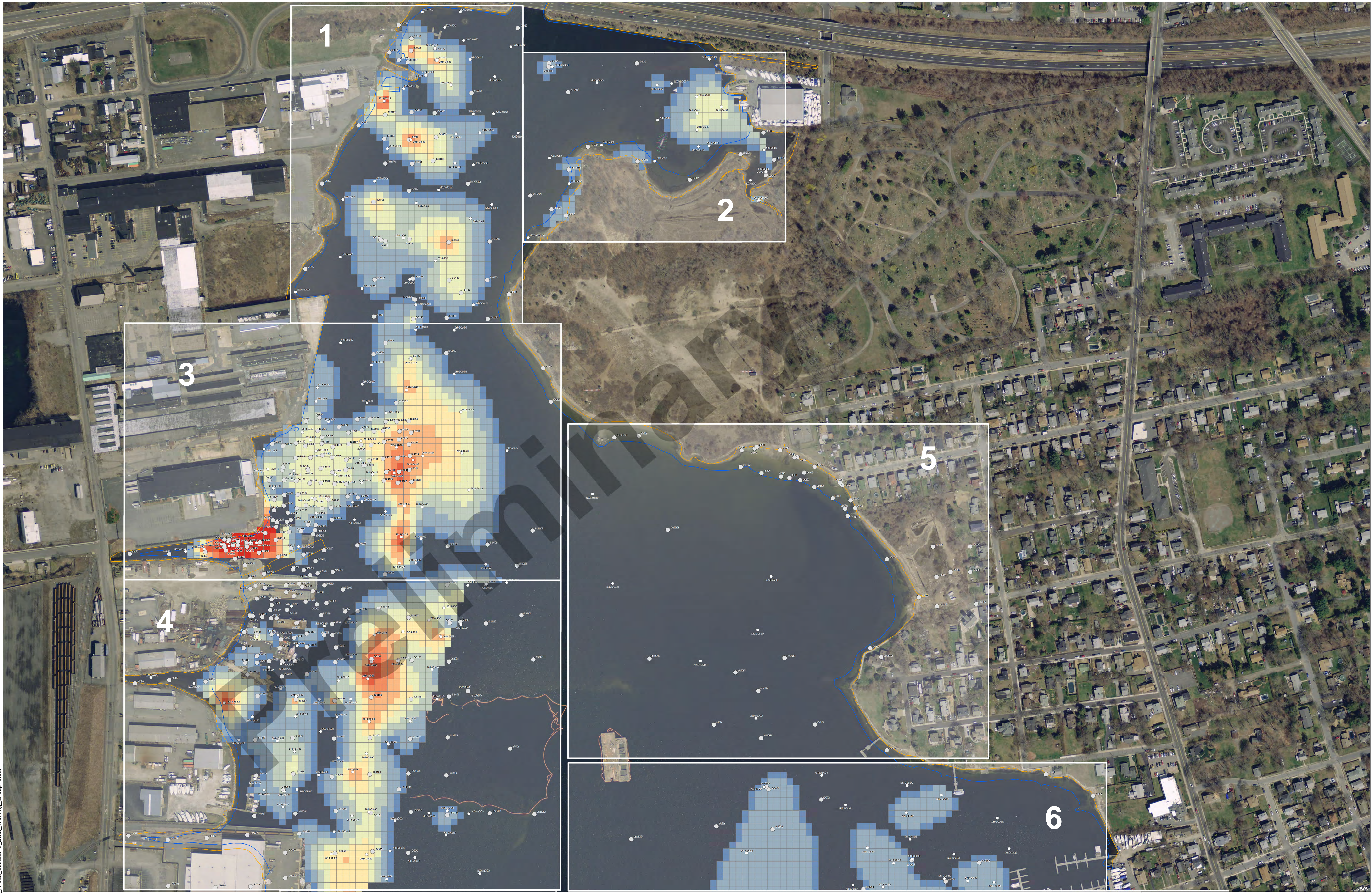


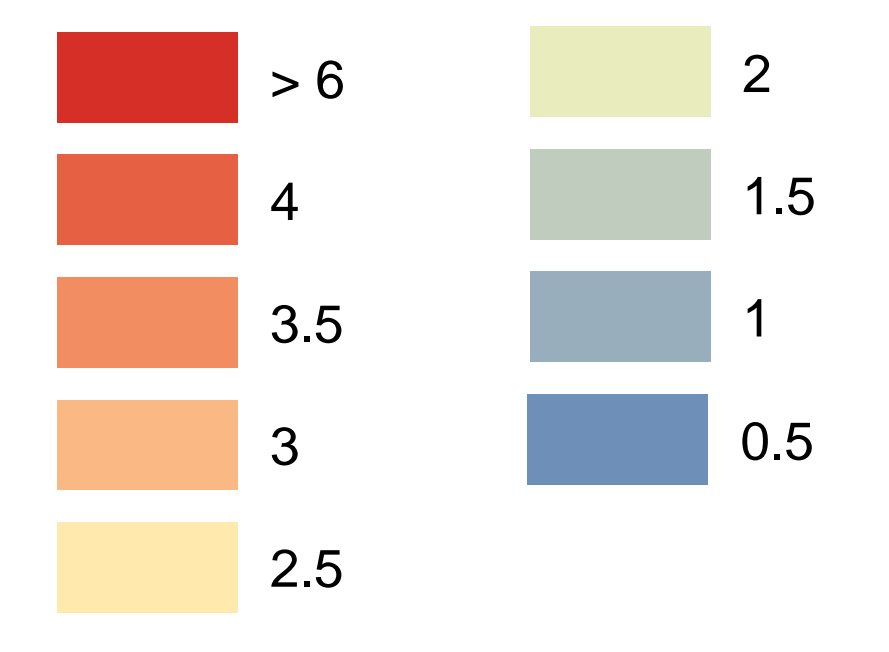
Path: Y:\NH\Projects\5556708\20150626ArcGIS\1_H_Dredge_Areas_Locations_Data_Working_Group1.mxd



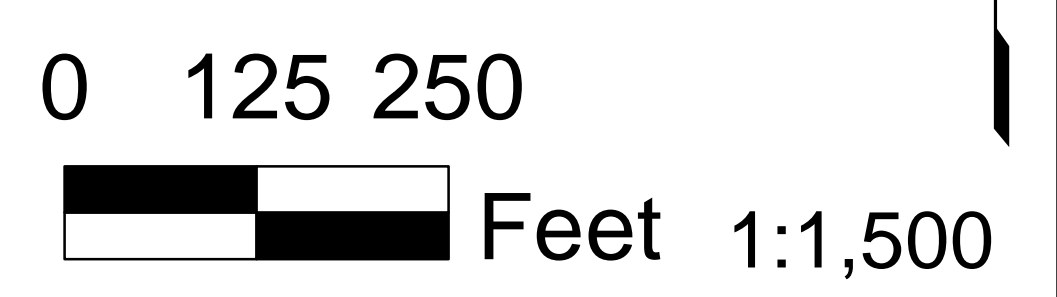
Legend

- IA Core Sample Location
- Historical Core Sample Location
- MLLW
- MLW
- MHW
- MHHW

Thickness of Sediment to Remove, ft



Aerial Photography MASSGIS 2014



Lower Harbor Dredge Areas Showing Thickness of Sediment to Remove and IA/Historical Core Locations

New Bedford Harbor Superfund Site

NAME: jpiccuito Date: 7/1/2015

Poster 1