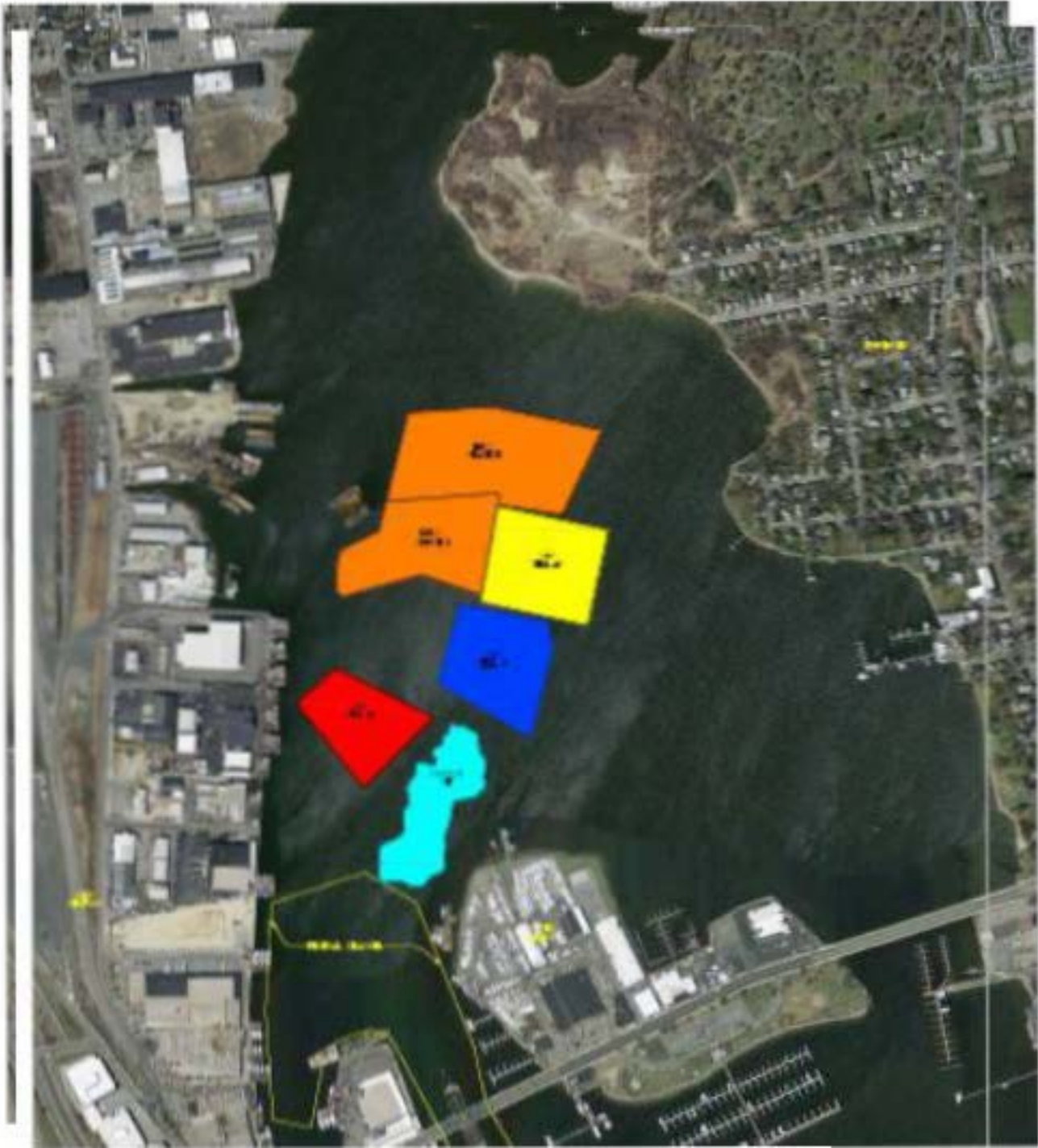


**Lower Harbor  
Confined Aquatic  
Disposal Cell (LHCC)  
April 23, 2015**



# Lower Harbor CAD Cell (LHCC) Construction

- Harbor Development Commission (HDC) has cooperative agreement with EPA to design and oversee the construction of the Lower Harbor CAD cell, or 'LHCC'.
- Phase I of the LHCC construction completed in 2014.
- Phase II of the LHCC scheduled to be completed in late 2015.

# Lower Harbor CAD Cell (LHCC) Construction; Phase II: 2015

- No 24/7 dredging allowed; dredging to be restricted under the contract to 6:30am-10:30pm, Monday through Saturday.
- Air monitoring was conducted during dredging of top-of-CAD material.
  - Results consistent with the results predicted by the modeling performed before the project began.
  - Results well below level of concern.

# Lower Harbor CAD Cell (LHCC) Design of First LH Dredge Season\*

- Design of dredging/filling program now underway. Bidding of the first season of Lower Harbor LHCC dredging scheduled to be held late in 2015.
- Dredging of contaminated areas of Lower Harbor to begin in 2016.
- Technical Working Group to receive (estimated schedule):
  - Draft dredge drawings in July.
  - Draft specifications for first season of LH dredging in August

\*all schedules tentative