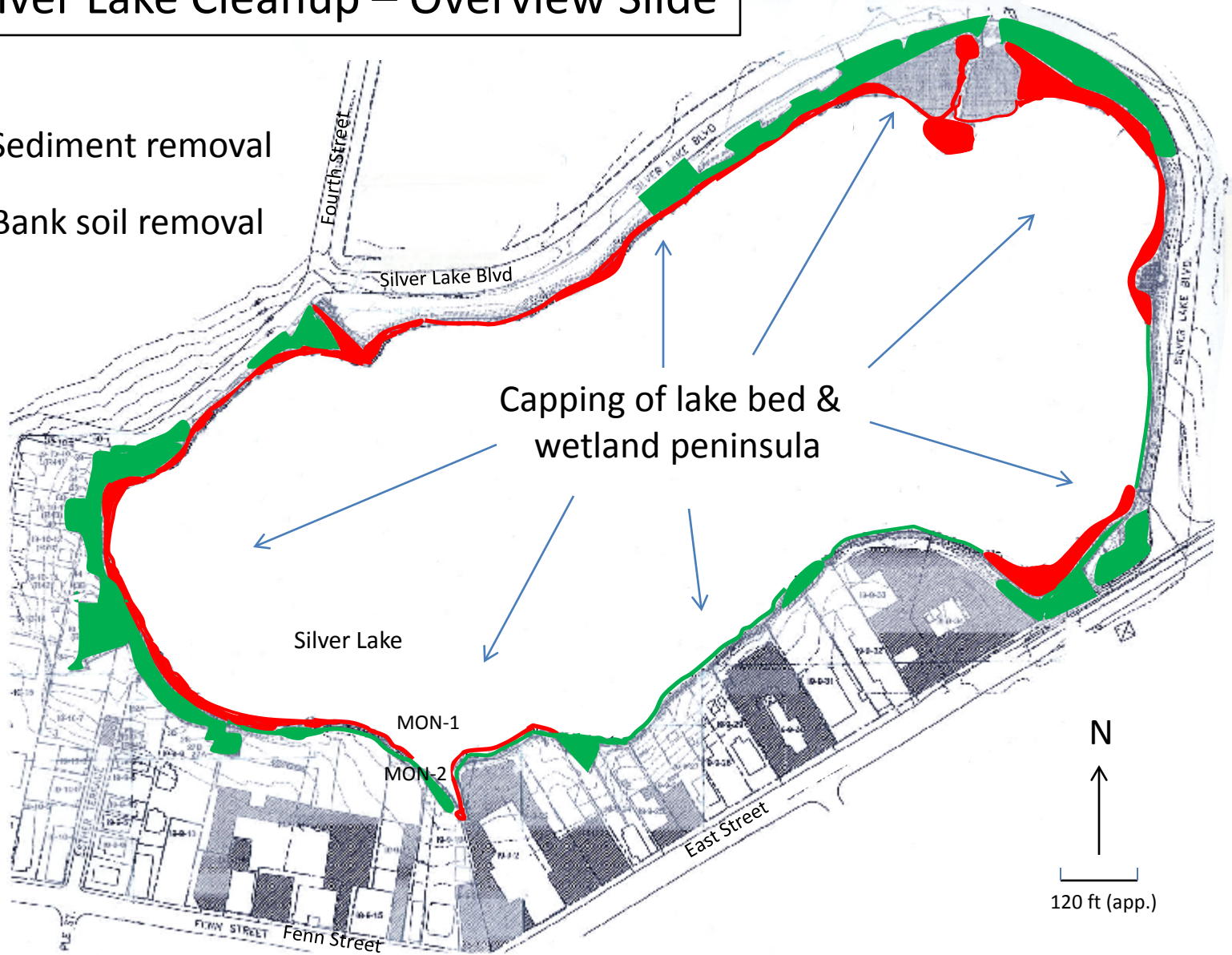


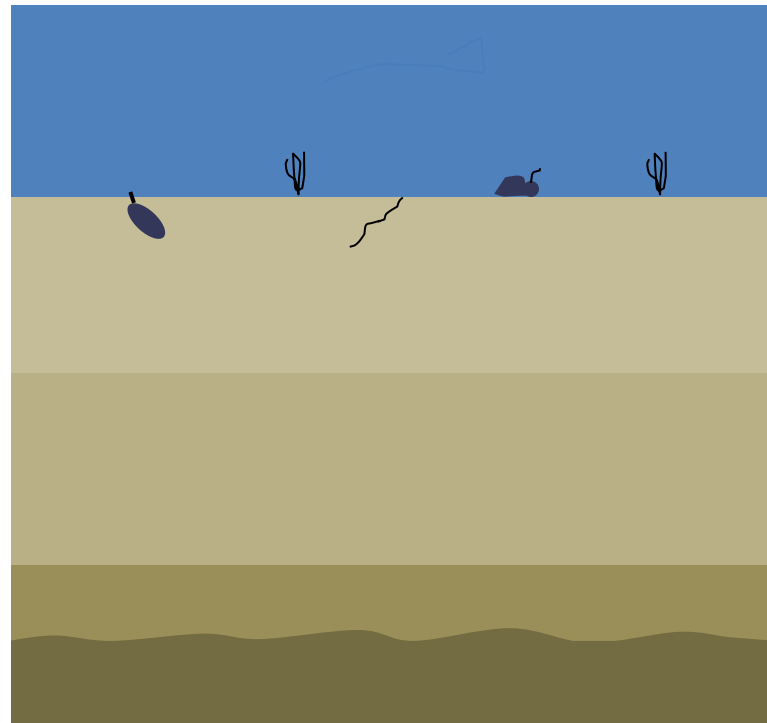
Silver Lake Cleanup – Overview Slide

 - Sediment removal

 - Bank soil removal



14-inch sand/topsoil cap over entire lake bed, placed in 1" lifts



Lake water

6" Bioturbation Layer

6" Isolation Layer

2" Mixing Layer

Native Lake Sediment

The hydraulic capping spreader-barge placing cap material



Mixing area for the hydraulic capping slurry



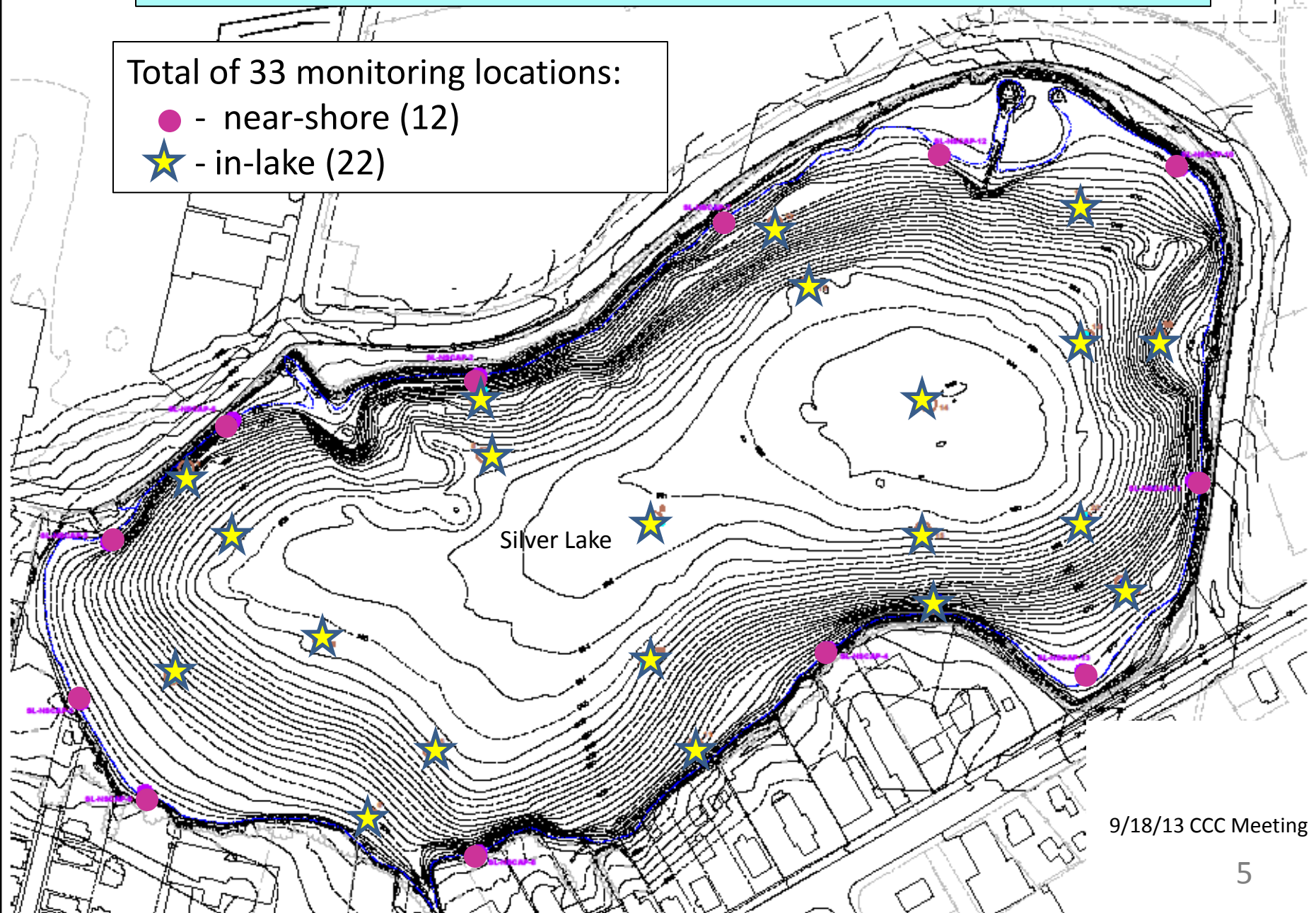
04.25.2013 16:25

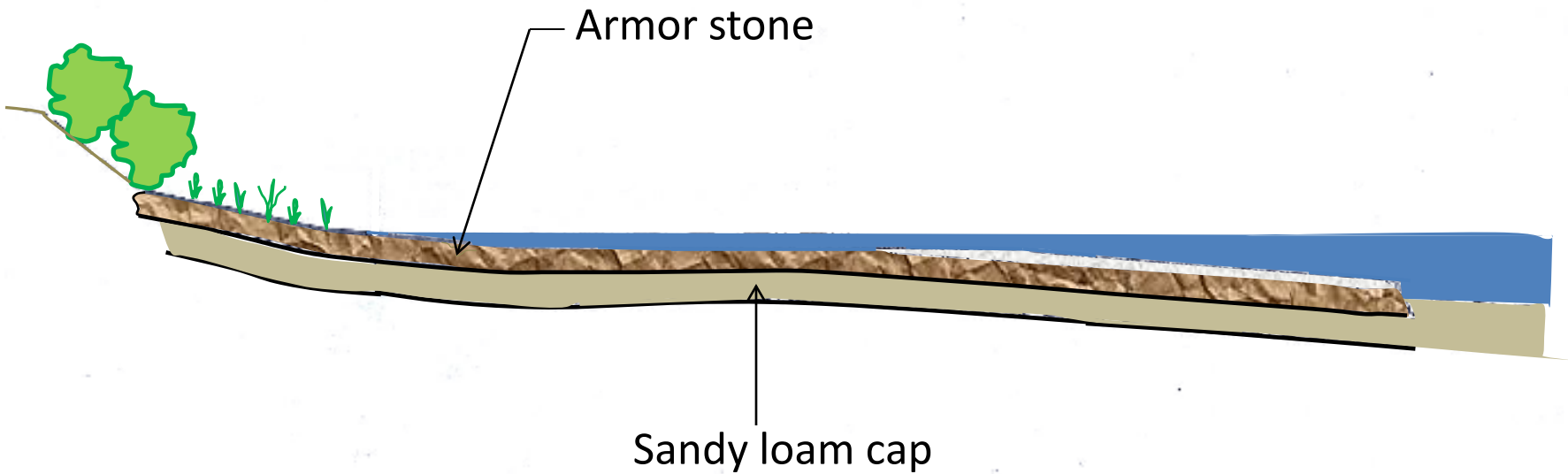
M. Argue Photo
M. Argue Photo

Cap must have minimum of 0.5% organic carbon

Total of 33 monitoring locations:

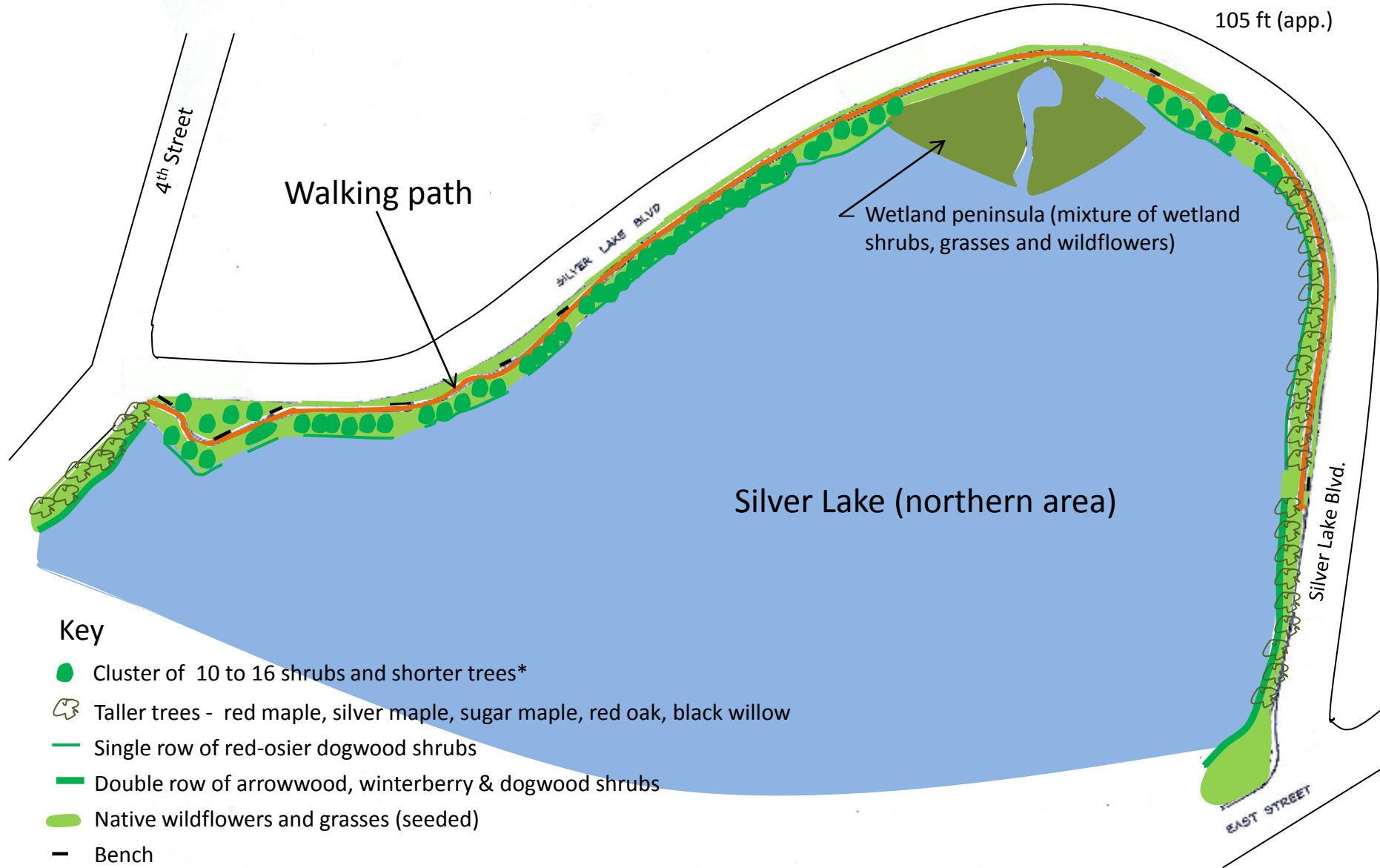
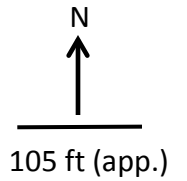
- - near-shore (12)
- ★ - in-lake (22)





Along the shoreline the cap is covered with protective armor stone

Walking path & plantings along N and E shores



*mix of arrowwood, winterberry, red-osier dogwood, nannyberry, service-berry, black chokeberry, silky dogwood, pussy willow and speckled alder

Walking path under construction



08.28.2013 08:51

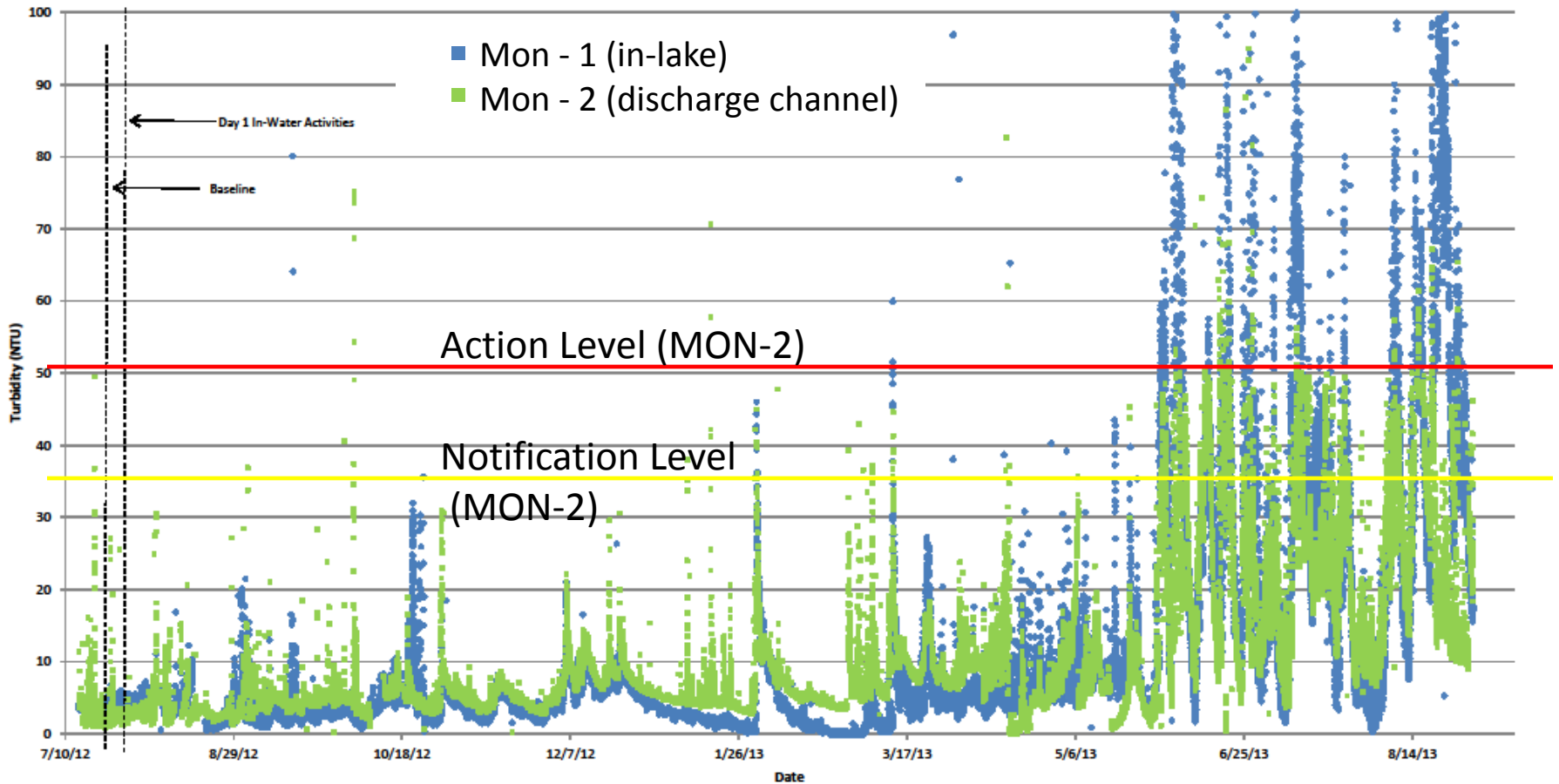
M. Argue Photo

Current Status

1. Soil and sediment removal: 100% complete
2. Near-shore cap and armor stone: 100% complete
3. Wetland peninsula capping: 100% complete
4. In-lake capping: ~90% complete
5. Walking path: ~50% complete
6. Tree and shrub planting: 0% complete
7. Fallen-trees-in-water replacement: 0% complete

12.20.2012

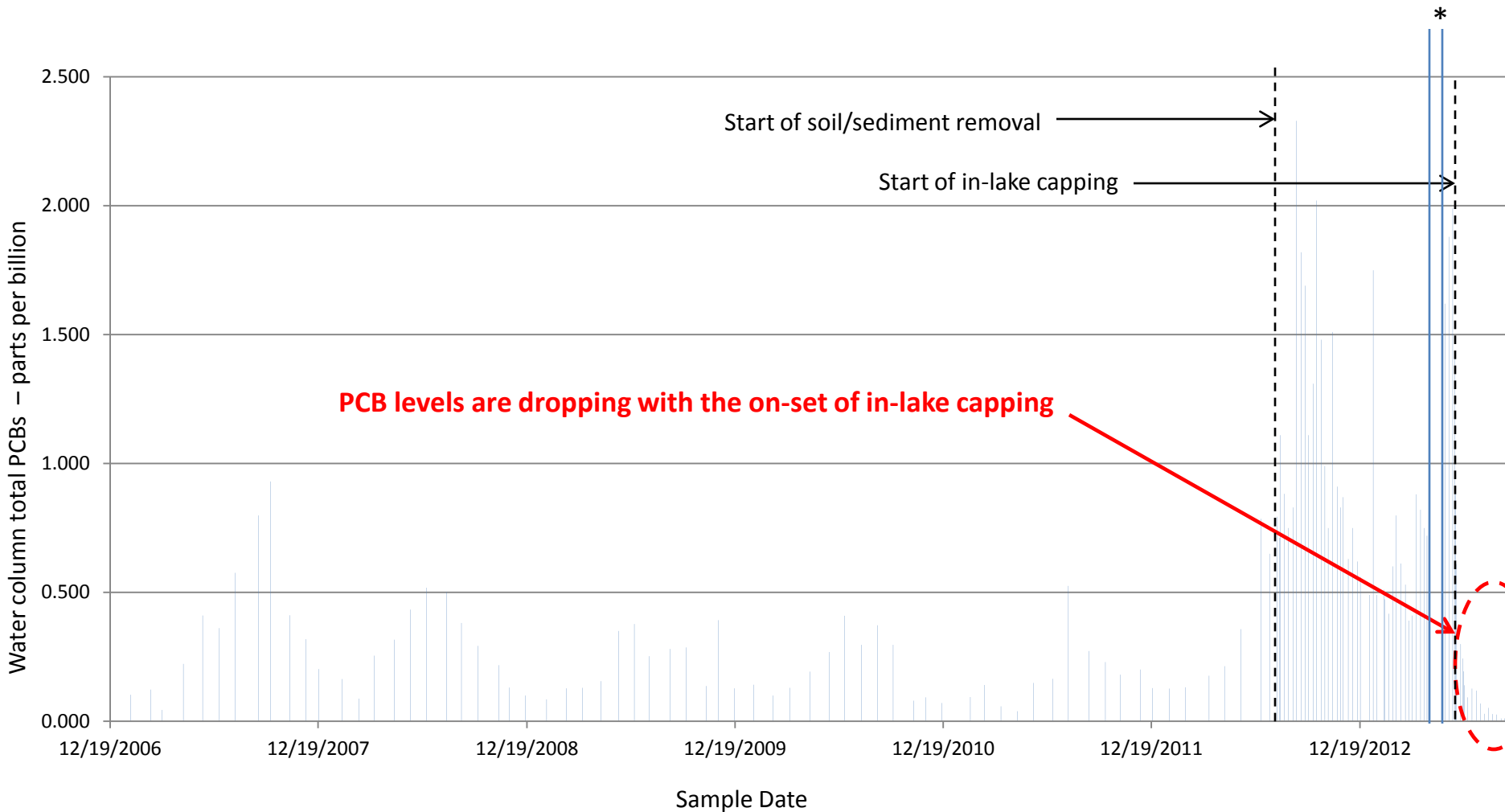
Turbidity Monitoring - Silver Lake 2012/13



Notes:

1. Major tick marks along the horizontal axis are at midnight. Turbidity measurements were recorded every 15 minutes.
2. Exceedances above 50 NTU at MON-2 were also observed during non-work hours on 7/24, 8/5, 8/17, 8/27, 9/5, 9/8, 9/22, and 9/30 (in 2012) and 1/31, 5/11, 5/22, 5/29, 6/5, 6/7, 6/14, 6/24, 7/3, 7/7, 7/11, 7/12, 7/13, 7/14, 7/19, 7/20, 7/21, 7/23, 7/24, 8/6, 8/7, 8/8, 8/9, 8/13, 8/15, 8/16, 8/17, 8/18, 8/30, and 8/31 (in 2013). As these exceedances were caused by weather events and/or field conditions not attributed to active construction, the observations have been removed from the above Figure.
3. A water quality sample was collected due to the exceedance above 50 NTU at MON-2 on 10/3/12, 1/17/13, 4/15/13, 6/4/13, 6/17/13, 6/18/13, 6/20/13, 6/26/13.
4. Malfunctions in the real-time turbidity monitor (used to collect the data presented in this Figure) indicated turbidity levels exceeded 50 NTU at MON-1 and/or MON-2 at certain times during and outside of work hours. At such times (or before work was started the following day), manual readings and/or visual observation were performed at MON-2 to confirm that turbidity levels were below the early action level of 35 NTU. The most extraneous of these exceedances have been removed from the above Figure.

Preliminary Post-Capping Water Column PCB Data Silver Lake



* 4/25/13 = 6.1 ppb; 5/3/13 = 8.38 ppb; 5/10/13 = 5.31 ppb

NOTE: MON-2 data used for 12/2006 – 5/2013; MON-1 data used thereafter since MON-2 area not yet fully remediated (MON-1 is approximately 50 ft north of MON-2).

