

# **EPA Public Informational Meeting**

**New Bedford Harbor  
Superfund Site**

**New Bedford, MA**

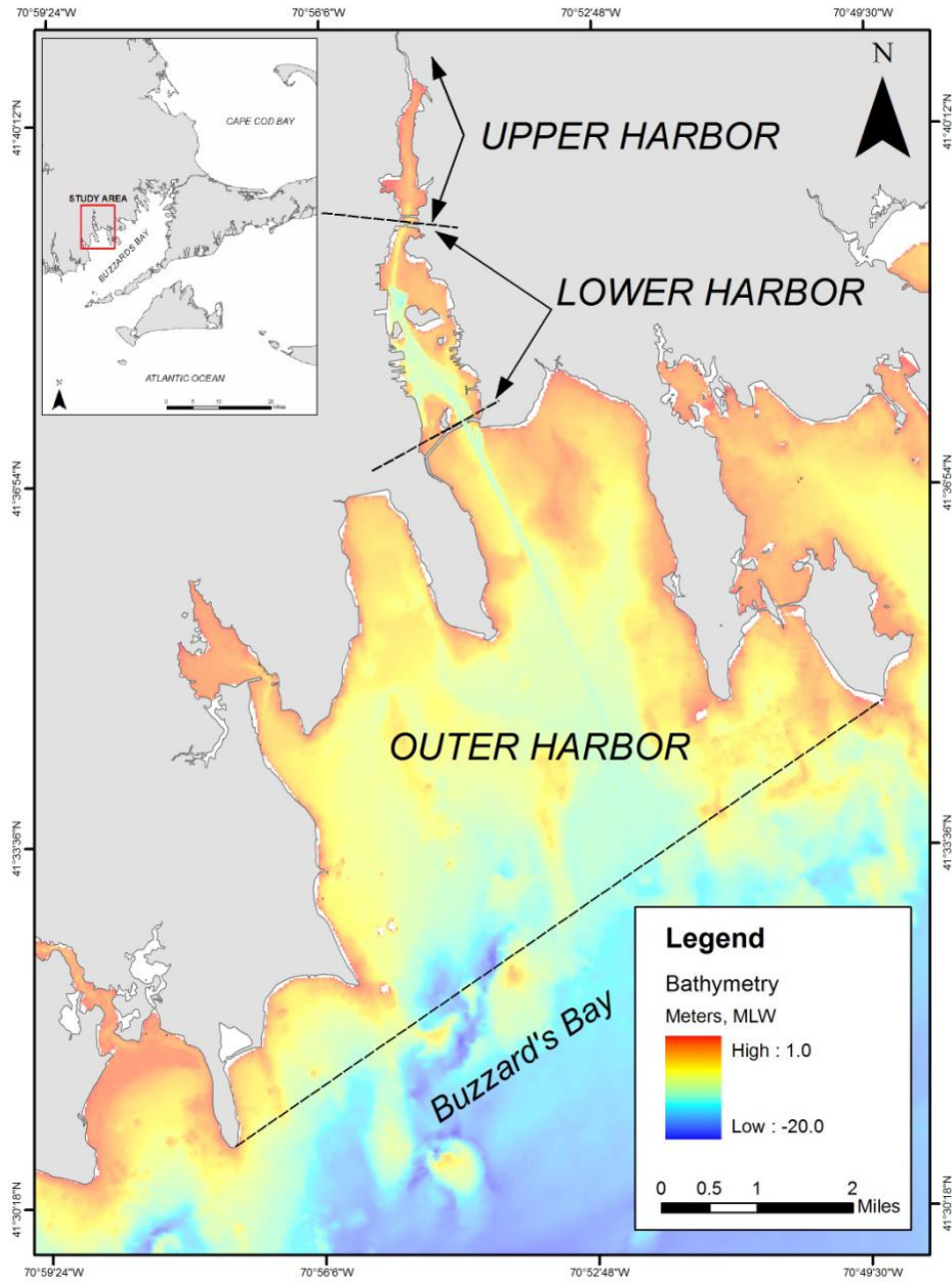
**Thursday**

**March 13, 2014**

# US and Commonwealth Cash-Out Settlement with AVX Corp.

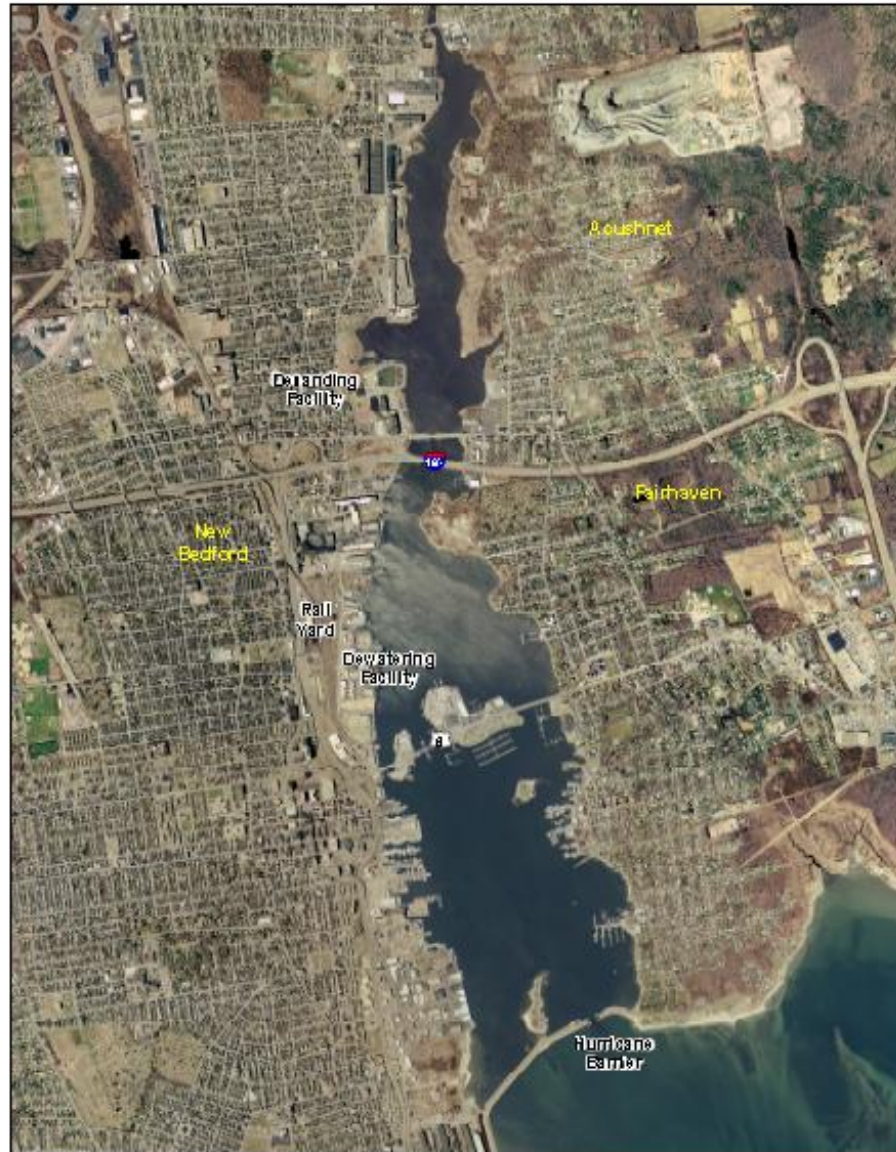
- Supplemental Consent Decree approved on September 19, 2013
- AVX Corp. to pay \$366.25M plus interest in three payments over a two year period beginning on November 19, 2013
- Settlement funds will provide for over 90% of estimated site cleanup costs and will allow EPA to accelerate the harbor cleanup
- These funds can only be used for EPA's harbor cleanup

# New Bedford Harbor SF Site



# Operable Unit # 1

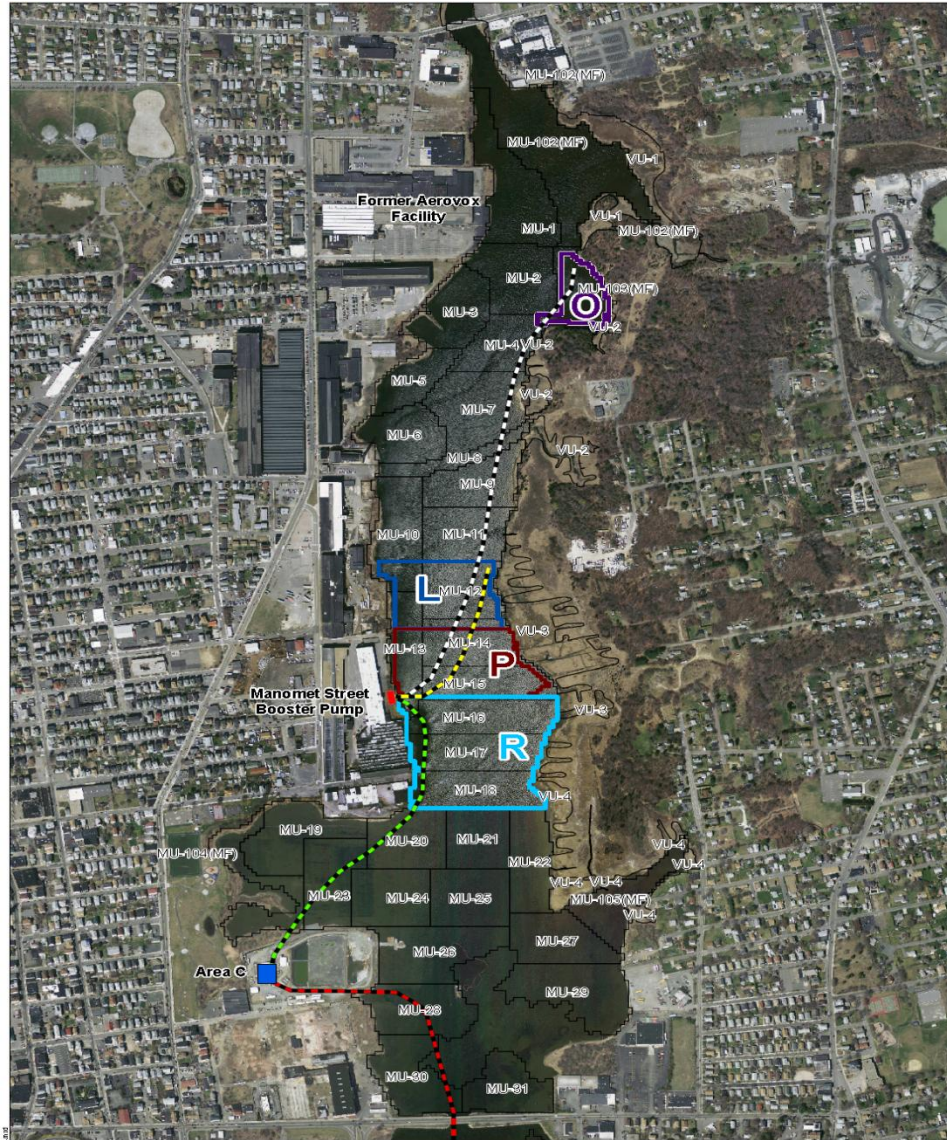
## Upper and Lower Harbor



# Upper Harbor Dredging

- **2013** – Hydraulically dredged approx. 19,000 cubic yards of sub-tidal sediment, and shipped processed filter cake and sand off-site for disposal
- **April 2014** – Continue hydraulic dredging for at least 80 days
- Monday through Friday with maintenance activities conducted on Saturdays
- Perform ambient air and water quality and monitoring as in years past
- Archeological surveys of 2014 area previously conducted
- Perform archeological surveys for areas to be dredged in 2015 - 2016

# Upper Harbor



<b>Legend</b>		2014 Dredge Area O	Management Units
Pipeline from Dredge Area O to Manomet Street Booster Pump	2014 Dredge Area L	2014 Dredge Area P	
Pipeline from Dredge Areas L, P, & R to Manomet Street Booster Pump	2014 Dredge Area R	2014 Dredge Area R	
Pipeline to Desanding			 <b>1:7,200</b>
Pipeline From Area C to Area D			
Manomet Street Booster Pump			

**JACOBS**

Booster Pump Location and Dredge Pipeline Routes

New Bedford Harbor Superfund Site

DATE: 01/11/2014 Figure 1

# Hydraulic Dredging Process

- Mobilization/Demobilization
- Debris Removal
- Hydraulic Dredging and Pump System
- Desanding Operation
- Dewatering Operation
- Waste Water Treatment Plant Operation
- Transportation and Disposal

**Step 1.** Dredging in upper harbor



**Step 2.**  
Desanding



Hydraulic dredging and disposal

**Step 3.** Dewatering

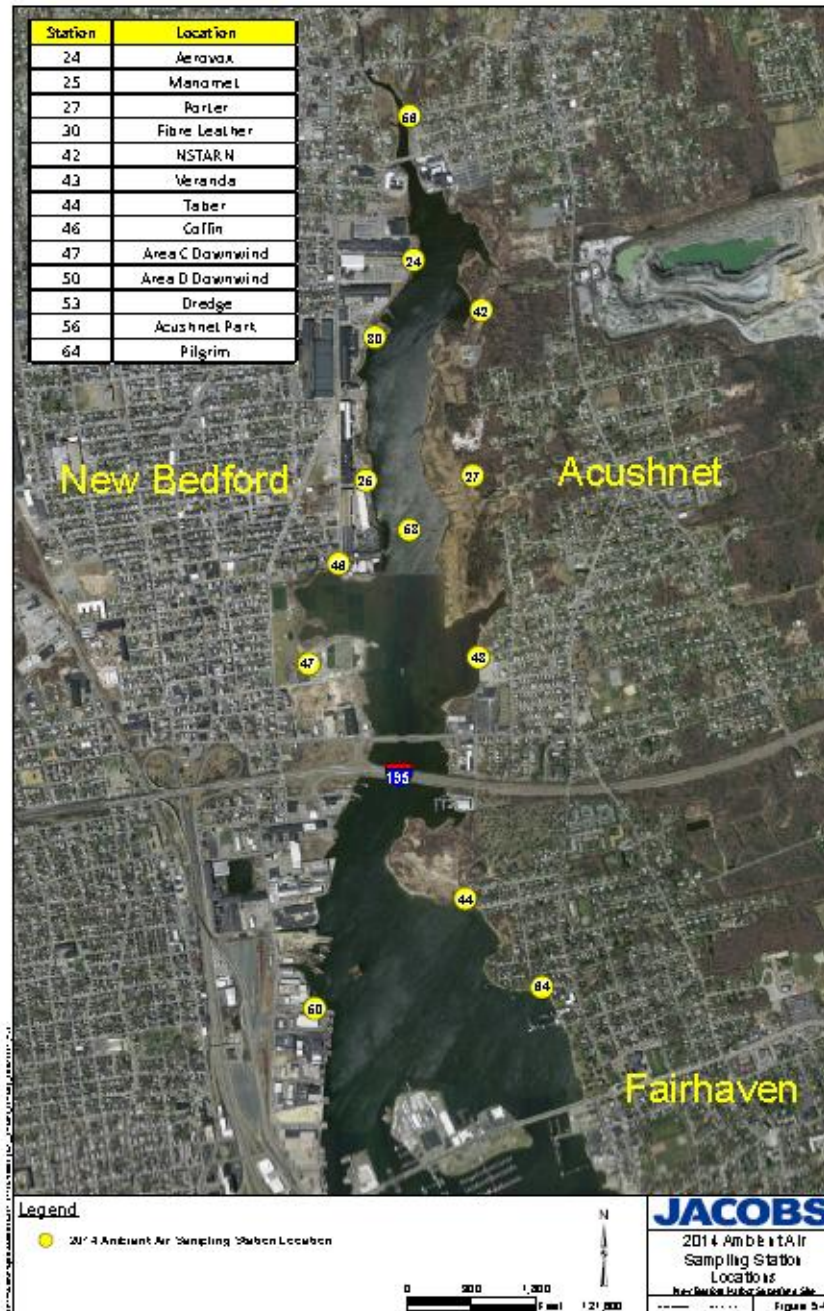


**Step 4.** Loading to rail for offsite disposal





# 2014 Air Monitoring Stations in the Harbor

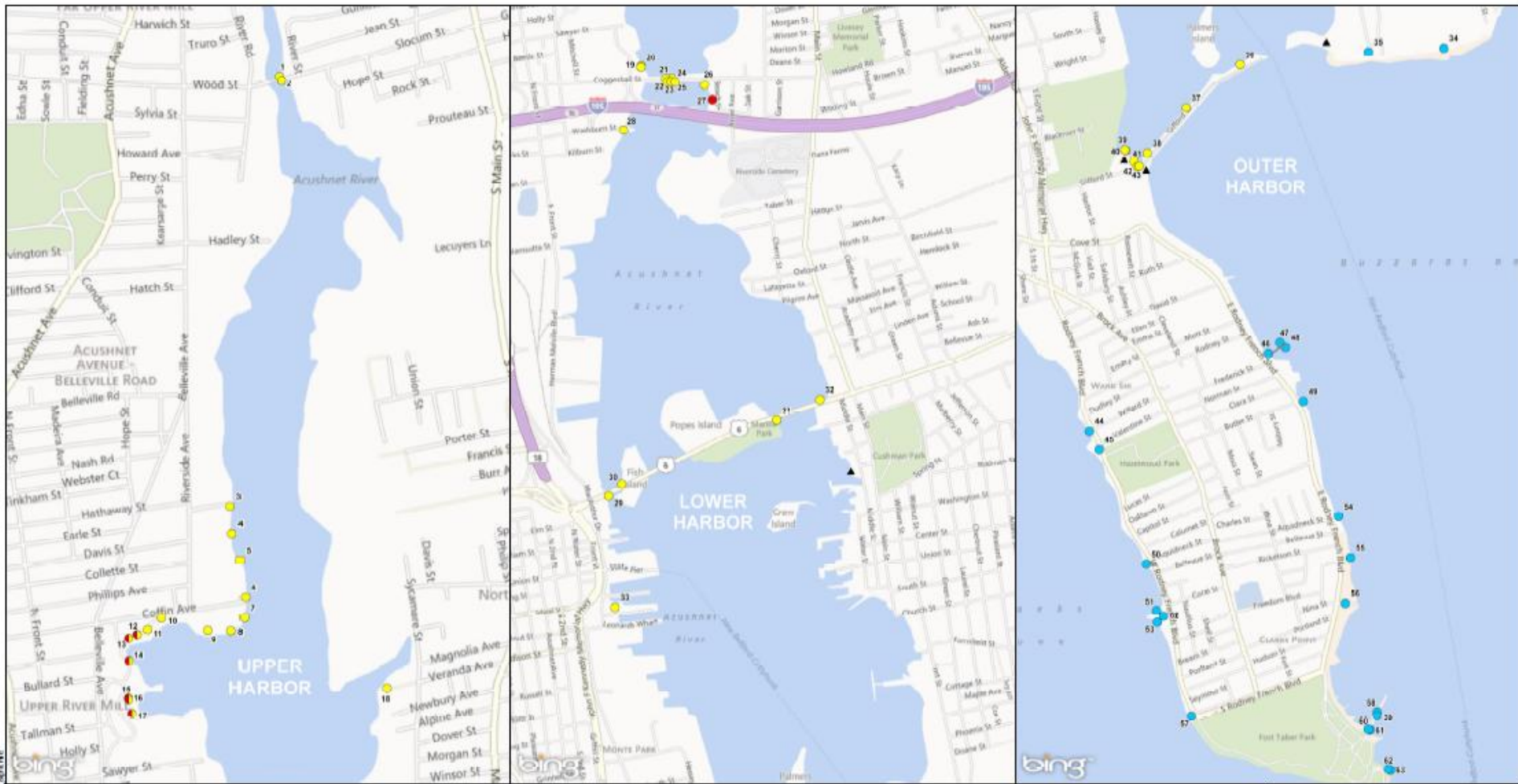


# General Schedule for Major Cleanup Elements

- 2014-2017: Upper Harbor Subtidal Hydraulic Dredging
- 2014-2015: Lower Harbor CAD Cell (LHCC) Construction
- 2015-2016: Mechanical Dredging of Lower Harbor and Upper Harbor for Disposal in the LHCC
- 2015-2018: Intertidal/Shoreline Remediation Sampling and Planning
- 2017-2020: Intertidal/Shoreline Remediation and Restoration
- Ongoing – Institutional Controls
- Tentative – Subject to Change

# EPA Cleanup – 2014 Priorities

- Planning, contracting and scheduling
- Preparation of Focused Feasibility Study (FFS) - alternate disposal options to Confined Disposal Facilities (CDFs) for Upper Harbor sediments
- Continued dredging of the Upper Harbor north of Coggeshall Street Bridge
- Completion of the construction of the Lower Harbor CAD Cell
- Continued outreach and education on the seafood consumption advisory



- Legend**
- No Fishing
  - Catch & Release
  - PCB Contaminated Sediment
  - ▲ Kiosk Location

DRAFT



**JACOBS**

**Sign Locations**

New Bedford Harbor Superfund Site

Date: 3/3/2014

Figure 1