

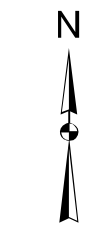
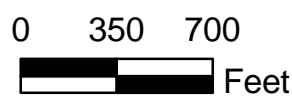
**Legend**

**Wetland Sediment Core Locations (mg/kg)**

- < 10.0
- 10.0 - 50.0
- > 50.0

Management Units

- MLLW
- MLW
- MHW
- MHHW



**New Bedford Harbor Wetland Sediment Core Locations - Index Map**

New Bedford Harbor Superfund Site

NAME: jpiccuito DATE: 09/19/2008

Figure 1



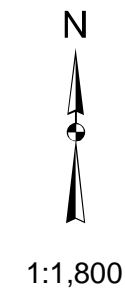
**Legend**

**Wetland Sediment Core Locations (mg/kg)**

- < 10.0
- 10.0 - 50.0
- > 50.0

- Management Units
- MLLW
- MLW
- MHW
- MHHW

Aerial Photography MASSGIS 2003



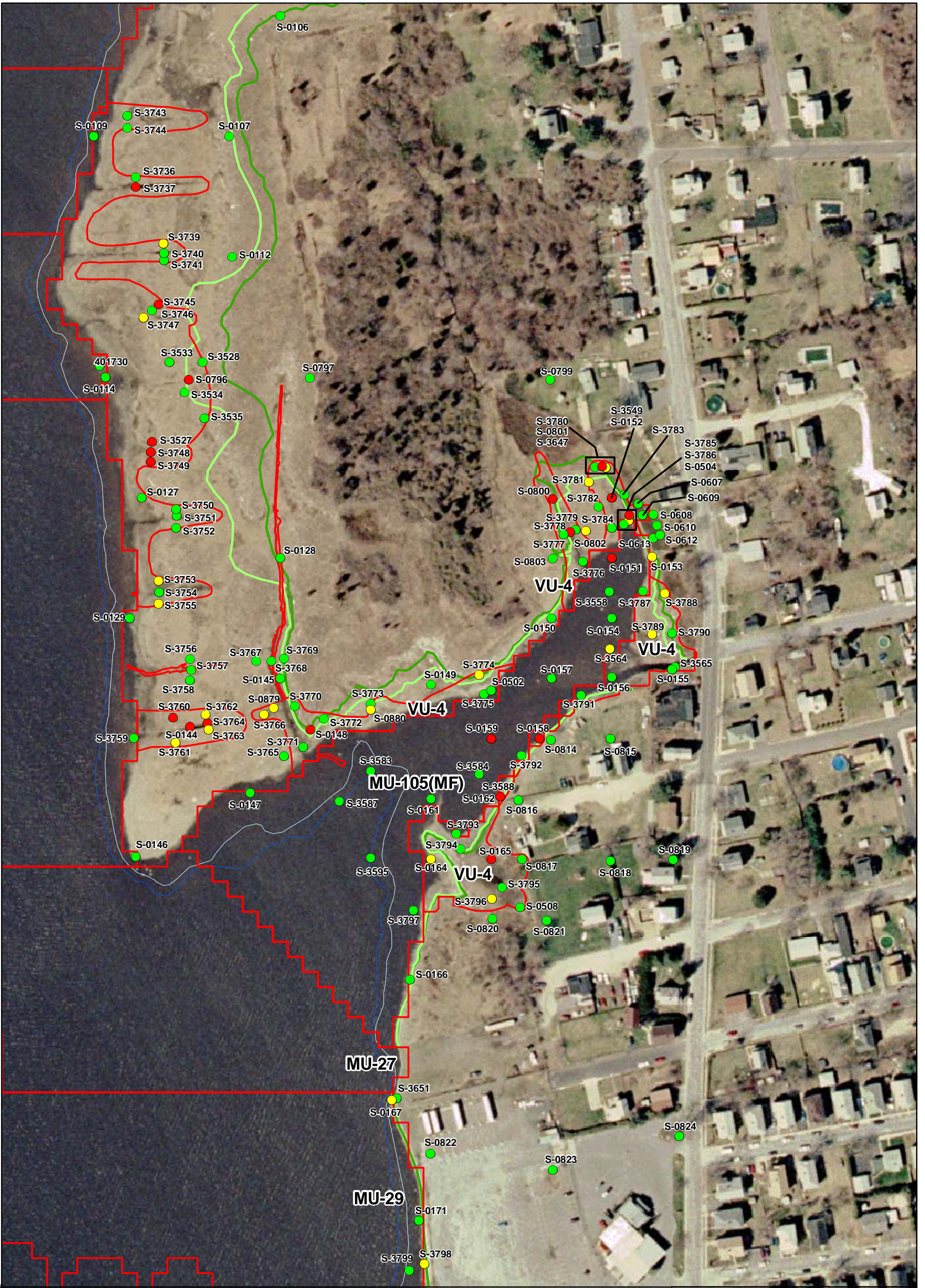
**New Bedford Harbor  
Wetland Sediment  
Core Locations**

New Bedford Harbor Superfund Site

NAME: jpiccuito DATE: 09/19/2008

Figure 2

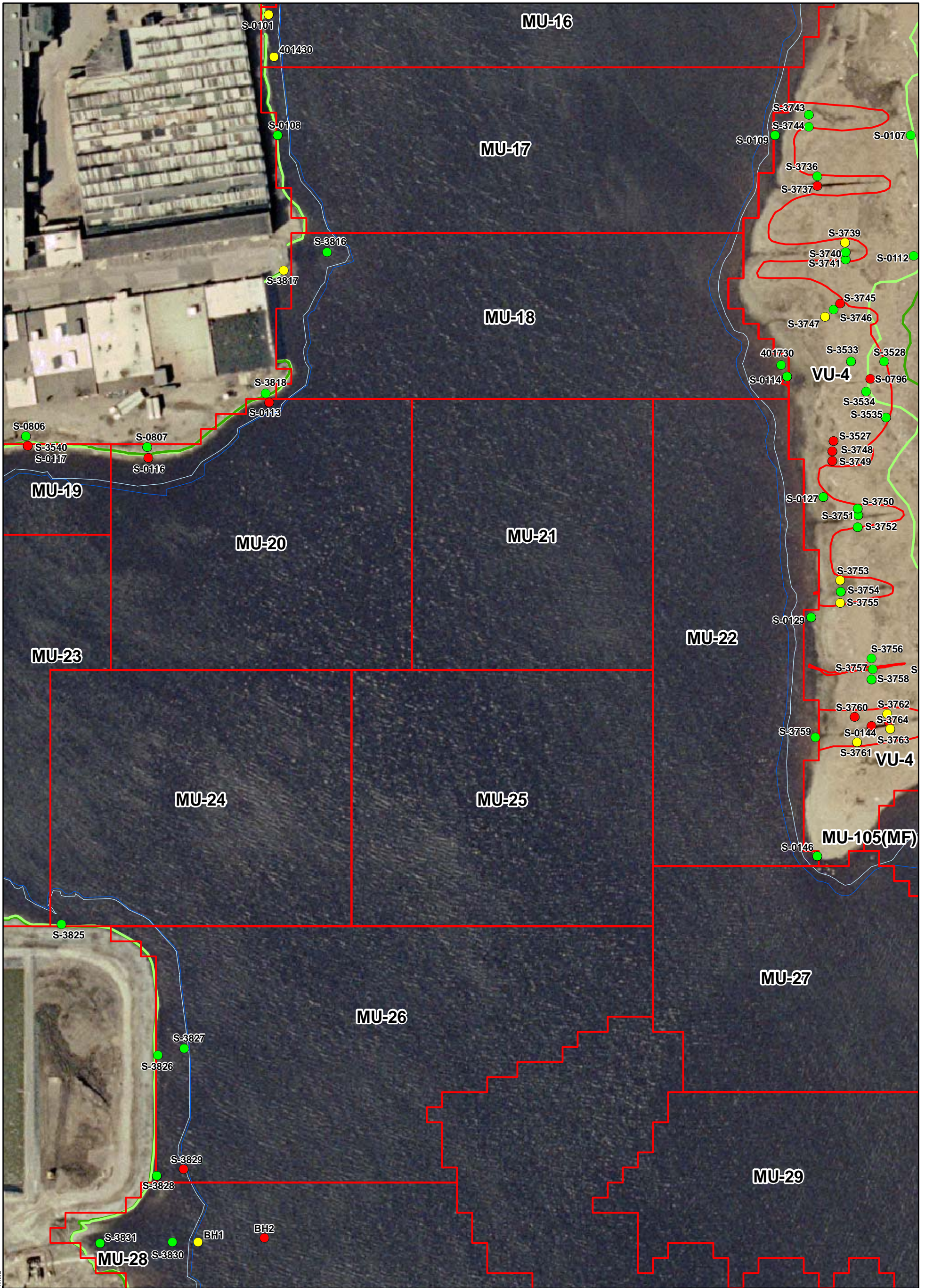
Y:\NH\Projects\3556\0602\080909\19\ArcGIS\Wetland\_cores\_fig2.mxd


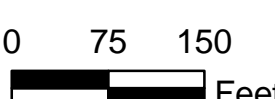



<b>Legend</b> <b>Wetland Sediment Core Locations (mg/kg)</b> <span style="color: green;">●</span> < 10.0 <span style="color: yellow;">●</span> 10.0 - 50.0 <span style="color: red;">●</span> > 50.0		<span style="border: 1px solid red; display: inline-block; width: 20px; height: 10px;"></span> Management Units  <span style="color: blue;">—</span> MLLW <span style="color: lightblue;">—</span> MLW <span style="color: green;">—</span> MHW <span style="color: darkgreen;">—</span> MHHW	   Feet 1:1,800	  <b>New Bedford Harbor Wetland Sediment Core Locations</b>  New Bedford Harbor Superfund Site NAME: jpiccuito    DATE: 09/19/2008 <b>Figure 3</b>
--	--	--	-----------------------------	---

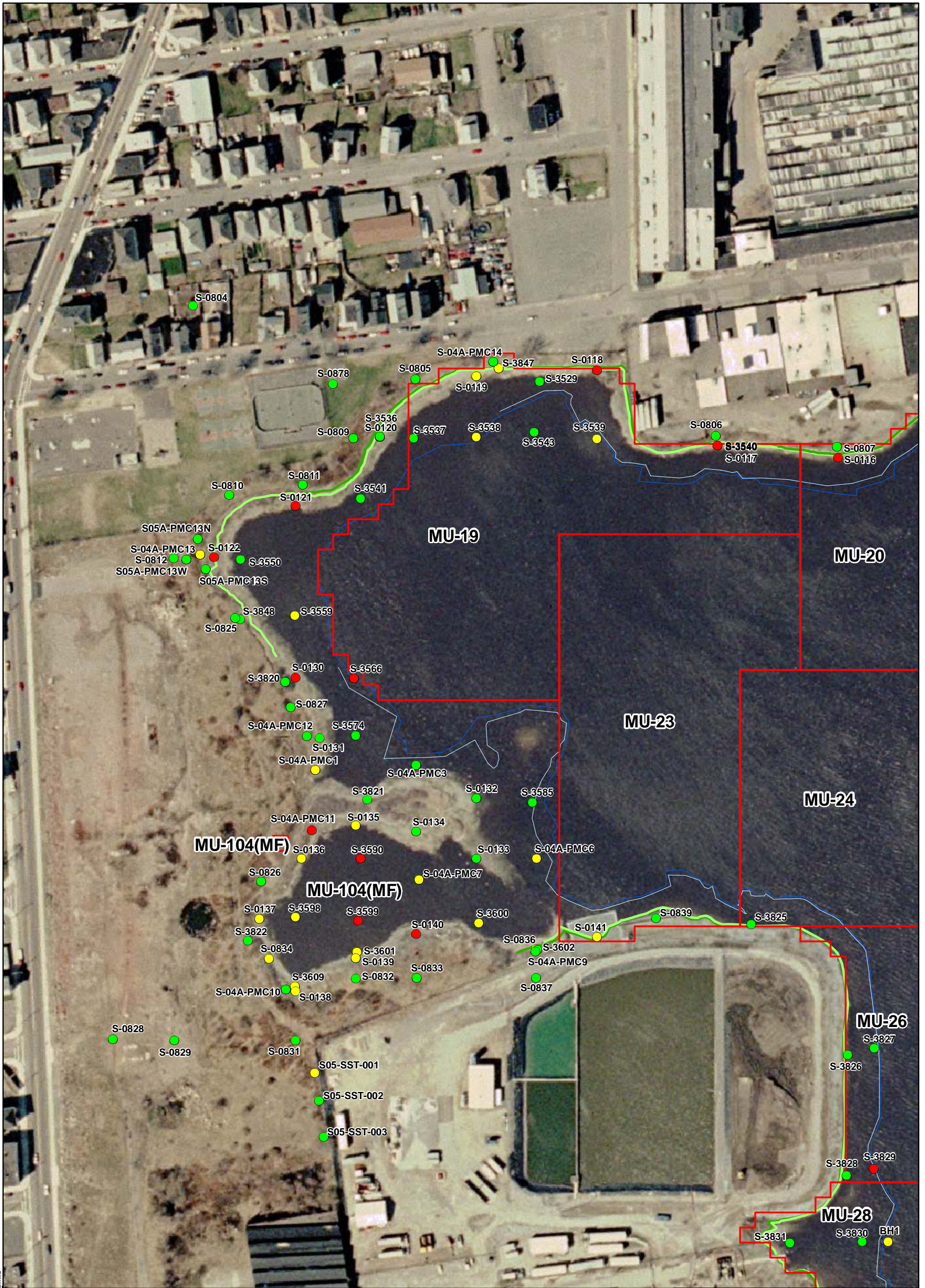
Y:\NBH\Projects\3586062\20080919\Aerial\GIS\Wetland\_cores\_fig3.mxd

Aerial Photography MASSGIS 2003



<b>Legend</b> <b>Wetland Sediment Core Locations (mg/kg)</b> <ul style="list-style-type: none"> <li><span style="color: green;">●</span> &lt; 10.0</li> <li><span style="color: yellow;">●</span> 10.0 - 50.0</li> <li><span style="color: red;">●</span> &gt; 50.0</li> </ul>		<ul style="list-style-type: none"> <li><span style="border: 1px solid red; display: inline-block; width: 15px; height: 10px;"></span> Management Units</li> <li><span style="color: blue;">—</span> MLLW</li> <li><span style="color: lightblue;">—</span> MLW</li> <li><span style="color: green;">—</span> MHW</li> <li><span style="color: darkgreen;">—</span> MHHW</li> </ul>	<div style="text-align: center;">             N         </div>	<div style="text-align: center;">             0 75 150            Feet         </div>	<div style="text-align: center;">   <b>JE JACOBS</b>  <b>New Bedford Harbor Wetland Sediment Core Locations</b>            New Bedford Harbor Superfund Site         </div>
Aerial Photography MASSGIS 2003		NAME: jpiccuito    DATE: 09/19/2008		<b>Figure 4</b>	

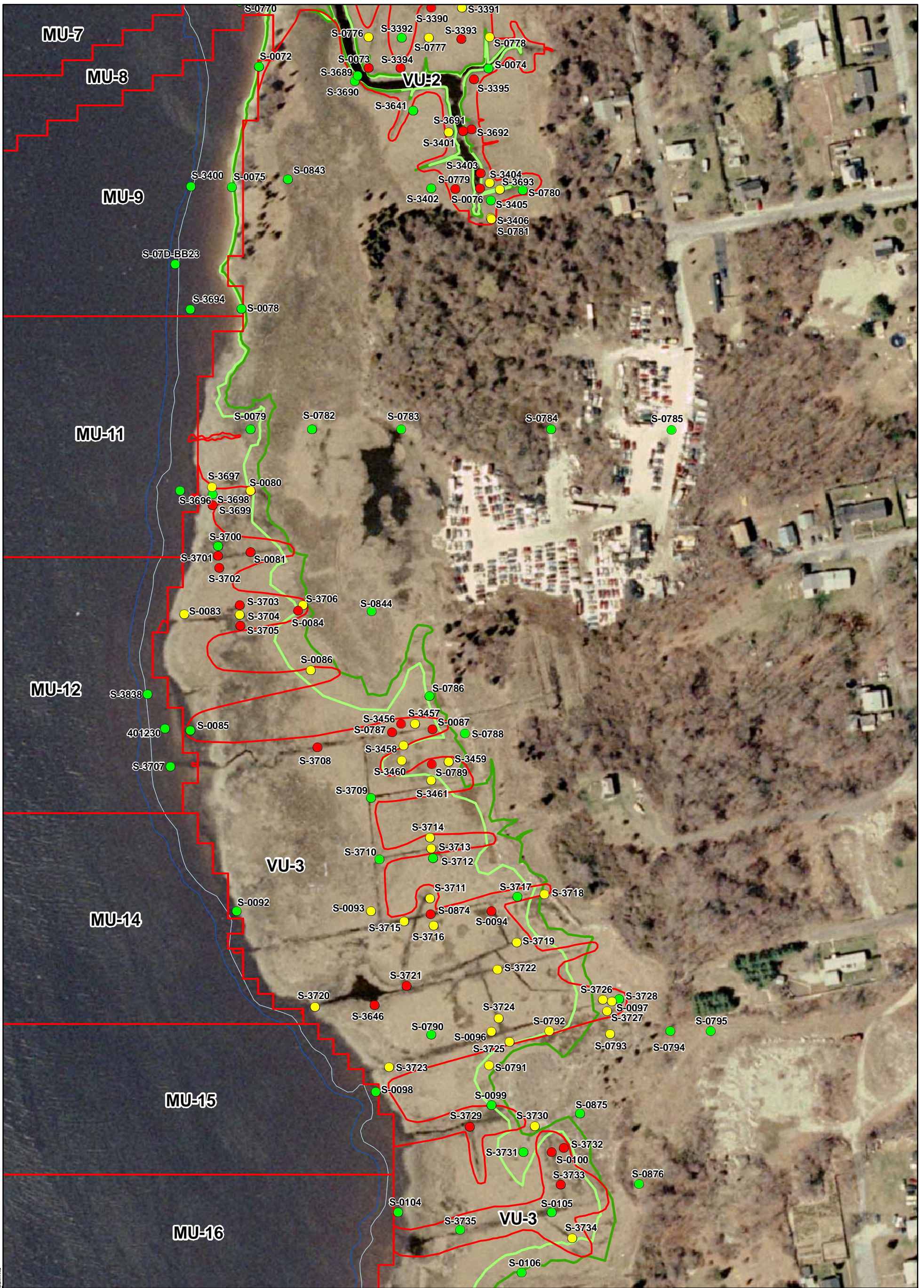
Y:\NBH\Projects\358\602\20080919\Aerial\GIS\Wetland\_cores\_fig4.mxd


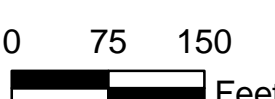



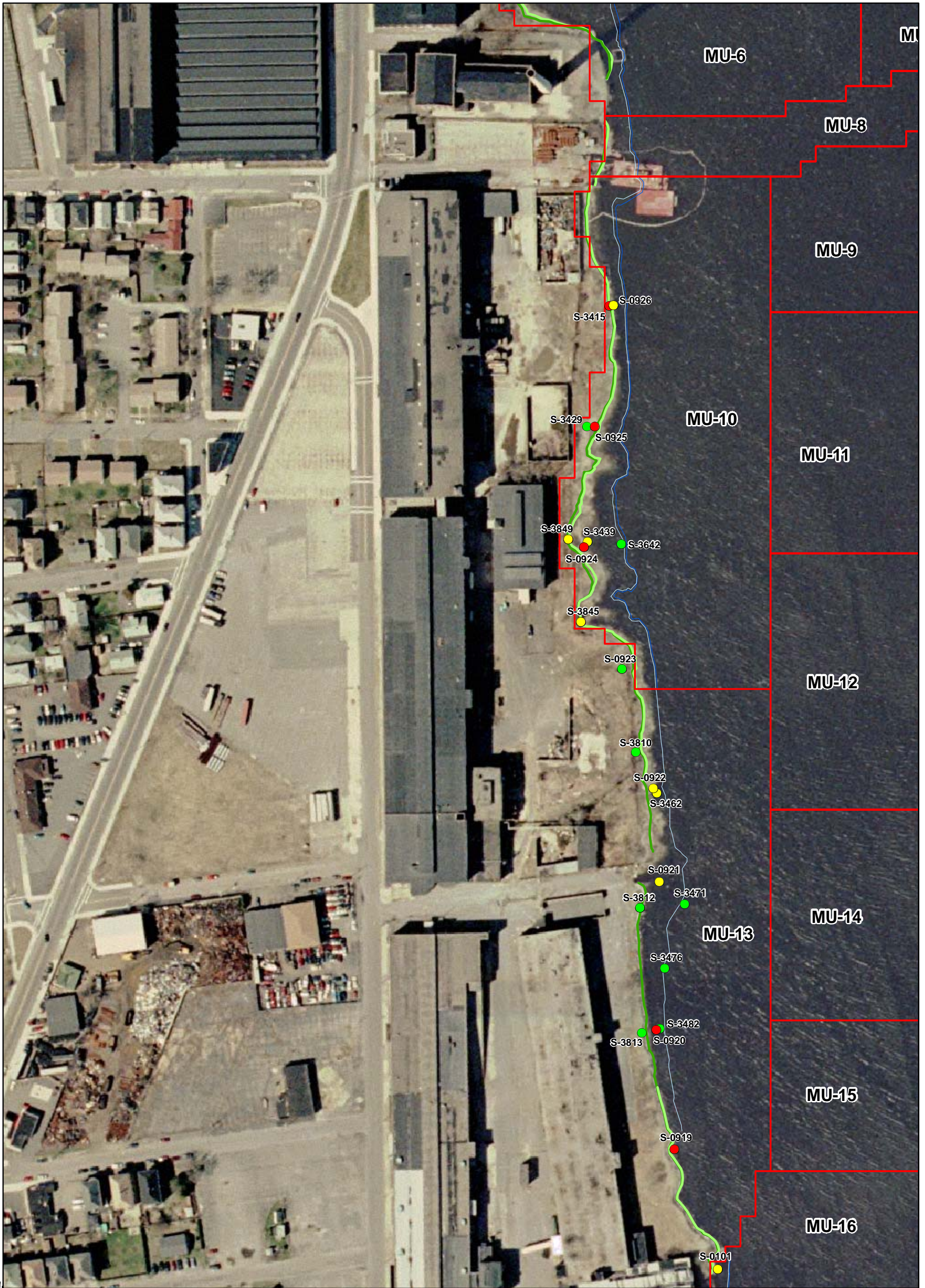
<b>Legend</b> <b>Wetland Sediment Core Locations (mg/kg)</b> ● < 10.0 ● 10.0 - 50.0 ● > 50.0		Management Units MLLW MLW MHW MHHW		 0 75 150 Feet 1:1,800		 <b>New Bedford Harbor Wetland Sediment Core Locations</b> New Bedford Harbor Superfund Site NAME: jpiccuito DATE: 09/19/2008 Figure 5	
--	--	--	--	---------------------------------	--	---	--

Y:\NBH\Projects\3556\020080319\Aerial\GIS\Wetland\_cores\_fig5.mxd

Aerial Photography MASSGIS 2003



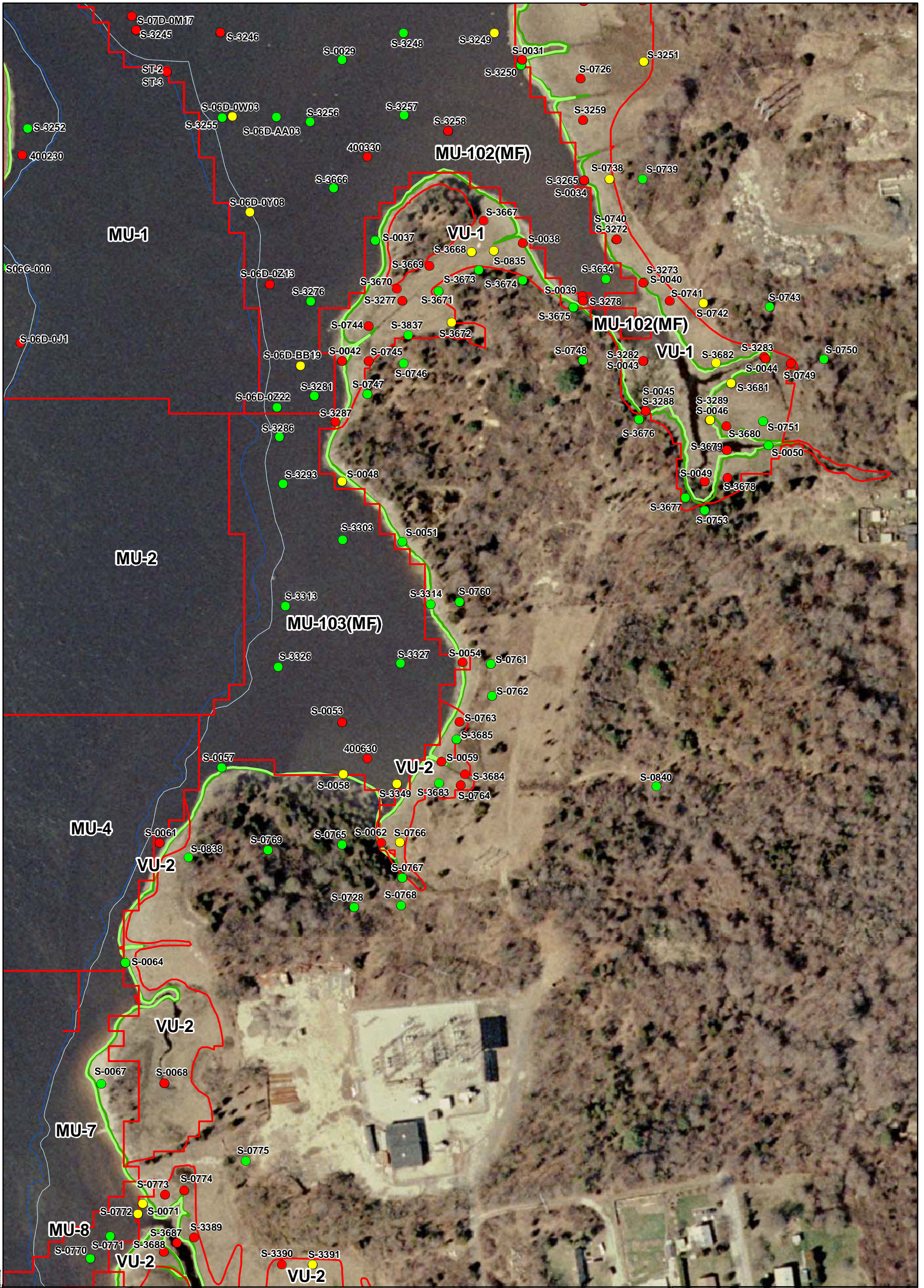
<b>Legend</b> <b>Wetland Sediment Core Locations (mg/kg)</b> <ul style="list-style-type: none"> <li><span style="color: green;">●</span> &lt; 10.0</li> <li><span style="color: yellow;">●</span> 10.0 - 50.0</li> <li><span style="color: red;">●</span> &gt; 50.0</li> </ul>		<ul style="list-style-type: none"> <li><span style="border: 1px solid red; display: inline-block; width: 15px; height: 10px;"></span> Management Units</li> <li><span style="border-bottom: 1px solid blue; width: 20px; display: inline-block;"></span> MLLW</li> <li><span style="border-bottom: 1px solid lightblue; width: 20px; display: inline-block;"></span> MLW</li> <li><span style="border-bottom: 1px solid green; width: 20px; display: inline-block;"></span> MHW</li> <li><span style="border-bottom: 1px solid darkgreen; width: 20px; display: inline-block;"></span> MHHW</li> </ul>	<div style="text-align: center;">               N         </div> <div style="text-align: center;">               0 75 150 Feet         </div>	<div style="text-align: center;">   <b>JE JACOBS</b>              New Bedford Harbor              Wetland Sediment              Core Locations              New Bedford Harbor Superfund Site              NAME: jpiccuito    DATE: 09/19/2008         </div>
Aerial Photography MASSGIS 2003		1:1,800	Figure 6	



<p><b>Legend</b></p> <p><b>Wetland Sediment Core Locations (mg/kg)</b></p> <ul style="list-style-type: none"> <li><span style="color: green;">●</span> &lt; 10.0</li> <li><span style="color: yellow;">●</span> 10.0 - 50.0</li> <li><span style="color: red;">●</span> &gt; 50.0</li> </ul>		<p><span style="border: 1px solid red; display: inline-block; width: 20px; height: 10px;"></span> Management Units</p> <p><span style="color: blue;">—</span> MLLW</p> <p><span style="color: lightblue;">—</span> MLW</p> <p><span style="color: green;">—</span> MHW</p> <p><span style="color: darkgreen;">—</span> MHHW</p>	<p style="text-align: center;">N</p> <p style="text-align: center;">0 75 150</p> <p style="text-align: center;">Feet</p> <p style="text-align: center;">1:1,800</p>	<p style="text-align: center;"><b>JE JACOBS</b></p> <p style="text-align: center;"><b>New Bedford Harbor Wetland Sediment Core Locations</b></p> <p style="text-align: center;">New Bedford Harbor Superfund Site</p> <p>NAME: jpiccuito    DATE: 09/19/2008    <b>Figure 7</b></p>
--	--	---	---	---

Y:\NBH\Projects\3586062\20080919\AerialGIS\Wetland\_cores7.mxd

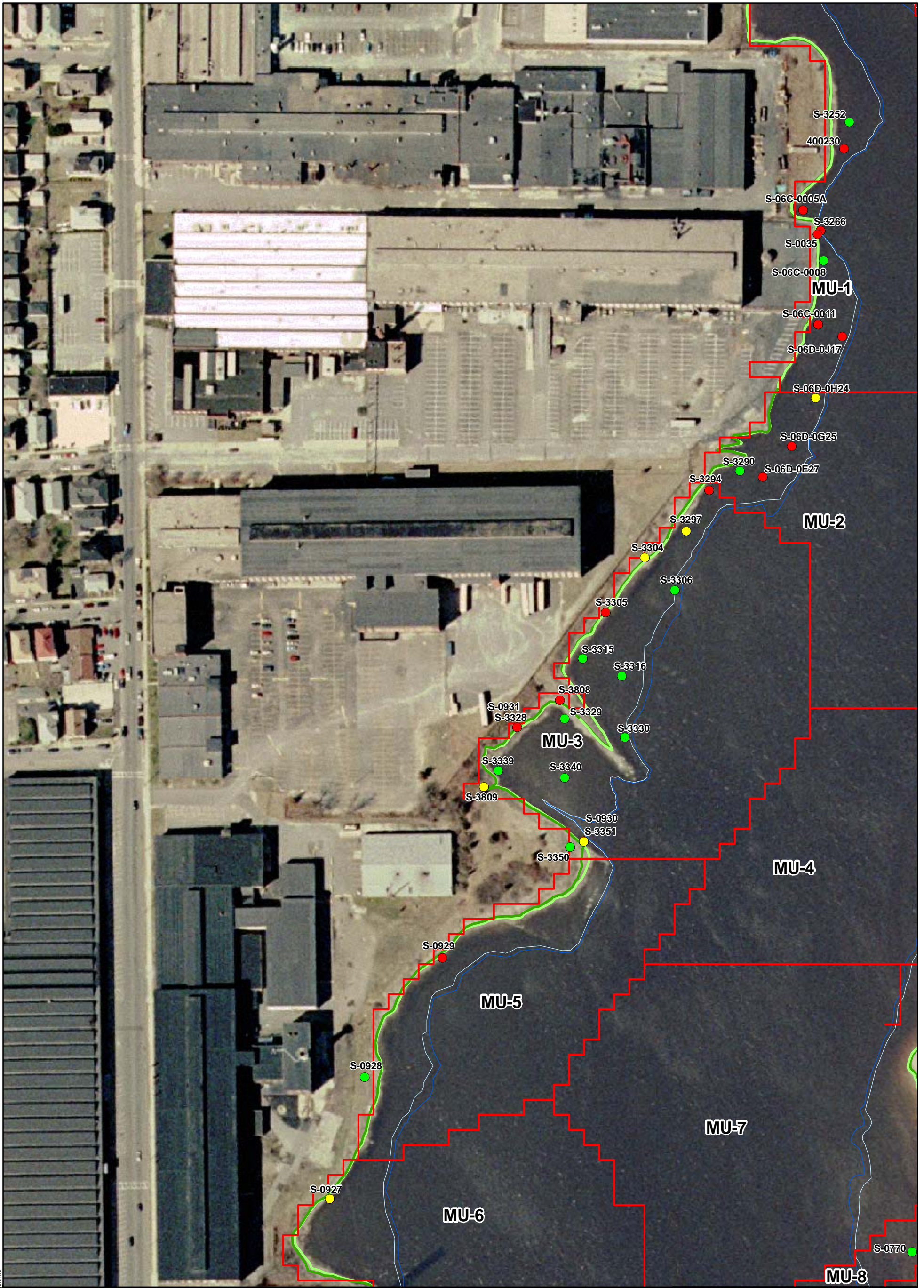
Aerial Photography MASSGIS 2003



<b>Legend</b> <b>Wetland Sediment Core Locations (mg/kg)</b> <ul style="list-style-type: none"> <li><span style="color: green;">●</span> &lt; 10.0</li> <li><span style="color: yellow;">●</span> 10.0 - 50.0</li> <li><span style="color: red;">●</span> &gt; 50.0</li> </ul>		<ul style="list-style-type: none"> <li><span style="border: 1px solid red; display: inline-block; width: 15px; height: 10px;"></span> Management Units</li> <li><span style="border-bottom: 1px solid blue; width: 20px; display: inline-block;"></span> MLLW</li> <li><span style="border-bottom: 1px solid lightblue; width: 20px; display: inline-block;"></span> MLW</li> <li><span style="border-bottom: 1px solid green; width: 20px; display: inline-block;"></span> MHW</li> <li><span style="border-bottom: 1px solid darkgreen; width: 20px; display: inline-block;"></span> MHHW</li> </ul>	
Aerial Photography MASSGIS 2003		 0 75 150 Feet	
		 N	
		1:1,800	
		<b>New Bedford Harbor Wetland Sediment Core Locations</b>	
		New Bedford Harbor Superfund Site	
		NAME: jpiccuito	DATE: 09/19/2008
		<b>Figure 8</b>	

Y:\NH\Projects\358\G0602\20080919\Aerial\GIS\Wetland\_cores\_fig8.mxd





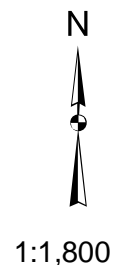
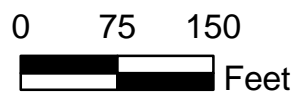
**Legend**

**Wetland Sediment Core Locations (mg/kg)**

- < 10.0
- 10.0 - 50.0
- > 50.0

Management Units

- MLLW
- MLW
- MHW
- MHHW

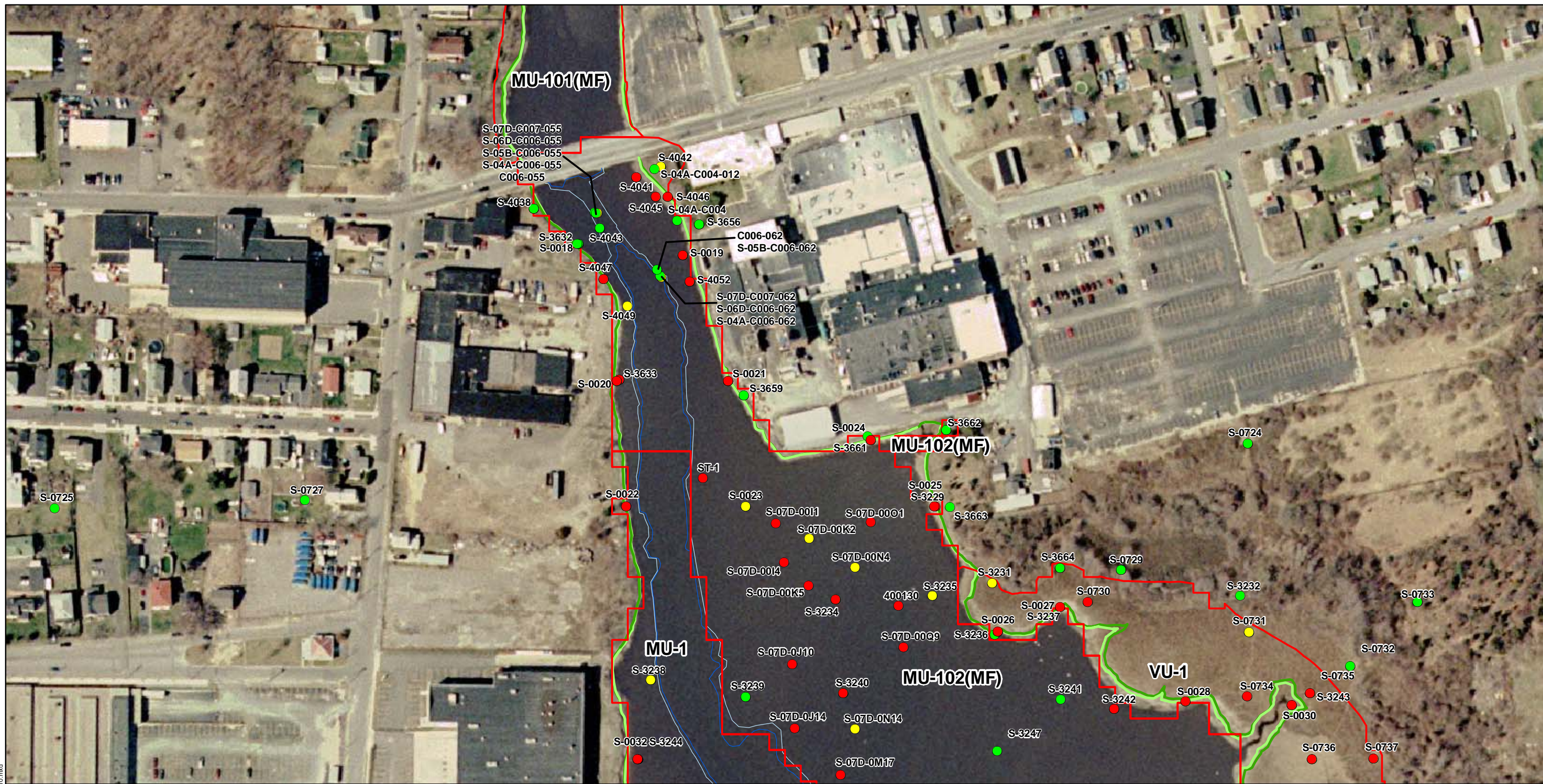


**New Bedford Harbor  
Wetland Sediment  
Core Locations**

New Bedford Harbor Superfund Site

NAME: jpiccuito DATE: 09/19/2008

Figure 9

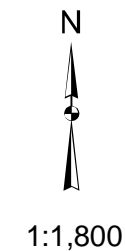


**Legend**

**Wetland Sediment Core Locations (mg/kg)**

- < 10.0
- 10.0 - 50.0
- > 50.0

- Management Units
- MLLW
- MLW
- MHW
- MHHW



**New Bedford Harbor  
Wetland Sediment  
Core Locations**

New Bedford Harbor Superfund Site

NAME: jpiccuito DATE: 09/19/2008

Figure 10

Y:\NH\Projects\3580602\080919\ArcGIS\Wetland\_cores\_fig10.mxd

Aerial Photography MASSGIS 2003