



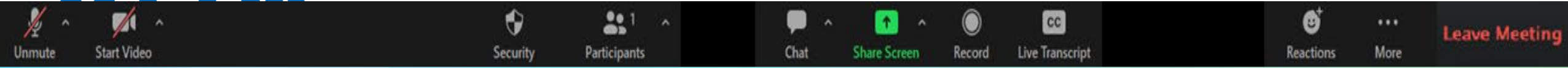
# New Bedford Harbor Superfund Site Annual Public Information Meeting

May 20, 2026

Chris Kelly, Remedial Project Manager

U.S. EPA – Region 1

# Zoom Meeting Controls

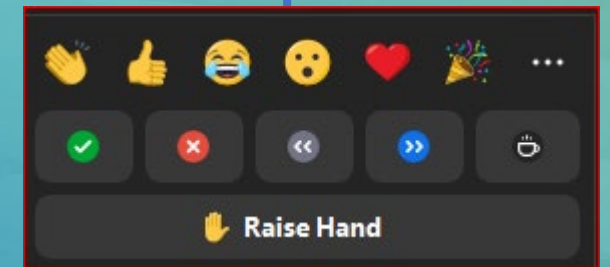


Click to show a list of other **participants** in the meeting.

**Rename:**  
Hover over your name, click **More**

Click to open the **Chat** panel where you can start or respond to a chat.

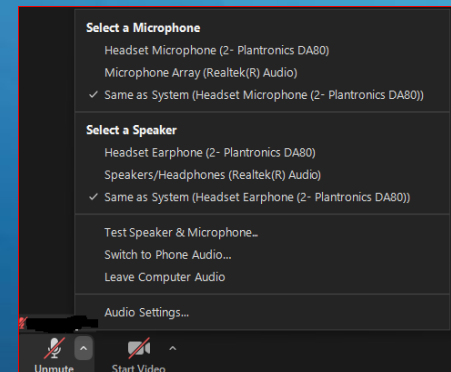
Click to **leave meeting**. You will not interrupt the meeting



**AUDIO/SOUND TROUBLESHOOT:**  
Click the “up arrow” (next to the mic icon) to open **audio settings**. “

Be sure to have “**Same as System**” selected, under Microphone and Speaker.

Calling via phone, dial \*6 to Mute/Unmute | Dial \*9 to Raise virtual hand



# Zoom Meeting Information

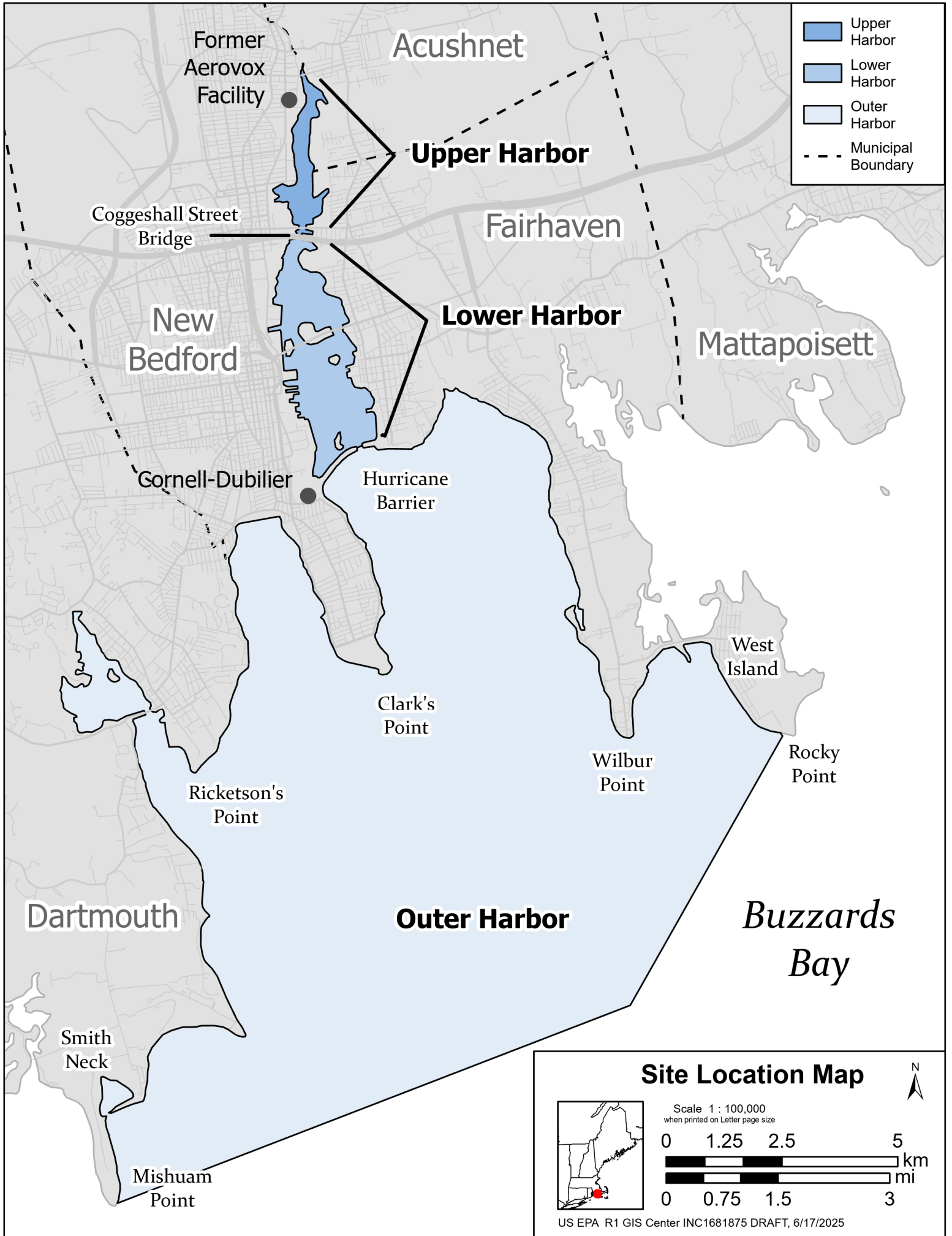
- This meeting is being recorded.
- If you cannot hear, please make sure your computer audio is turned on.
- Use the chat and/or 'raise hand' features to type or speak questions to participate.
- Hold questions until the end of the presentation.
- Be respectful of those who are speaking.
- Aim to speak slowly and clearly into the microphone.
- If you have technical difficulties type in the chat box. If this does not work, please e-mail [beato.rosa@epa.gov](mailto:beato.rosa@epa.gov) and [hubner.randy@epa.gov](mailto:hubner.randy@epa.gov).

# Project Team

- Aaron Shaheen – EPA Community Involvement Coordinator
- Chris Kelly – EPA Remedial Project Manager
- Marie Esten – U.S. Army Corps of Engineers (USACE) Project Manager
- Paul Craffey – Massachusetts Department of Environmental Protection (MassDEP) Project Consultant
- Peter Zawadzkas – Massachusetts Department of Environmental Protection Project Manager

# Agenda

- Recap of 2025 accomplishments
- Overview of planned activities for 2026
- Review of Seafood Consumption Advisories
- Community Involvement Updates
- Questions & Answers



- Upper Harbor
- Lower Harbor
- Outer Harbor
- Municipal Boundary

**Site Location Map**

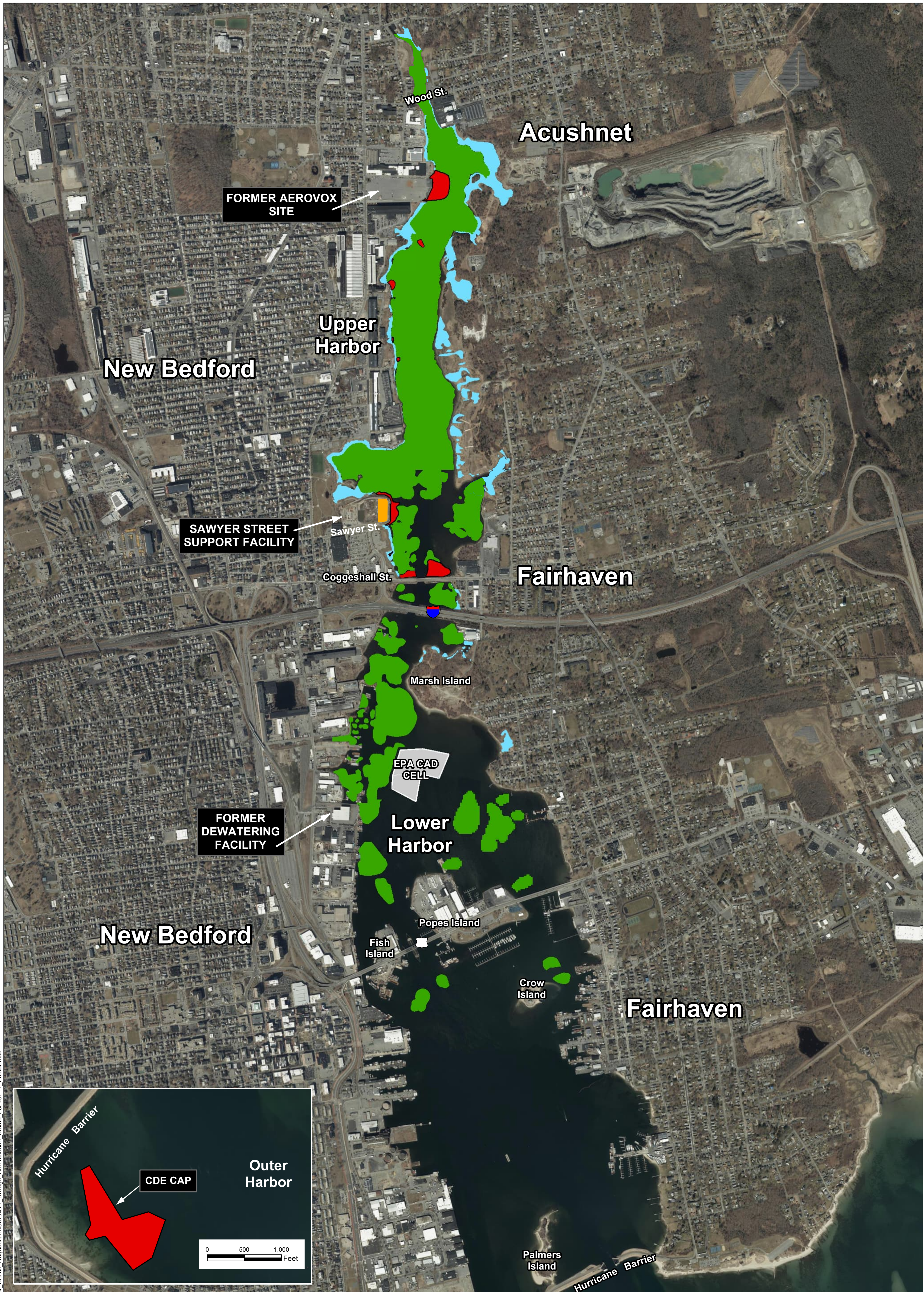
Scale 1 : 100,000  
when printed on Letter page size

0 1.25 2.5 5 km

0 0.75 1.5 3 mi

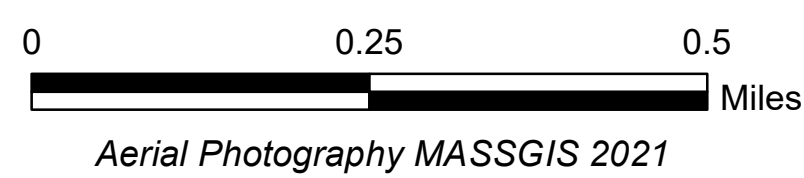
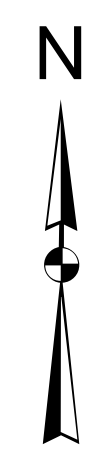
N

US EPA R1 GIS Center INC1681875 DRAFT, 6/17/2025



**Legend**

- Dredging Completed
- Intertidal Remediation Completed
- Sediment Cap Areas
- Pilot CDF
- EPA CAD Cell



**Jacobs**

**New Bedford Harbor Overview  
as of July 2024**

New Bedford Harbor Superfund Site

NAME: jpiccuito Date: 7/17/2024

**Figure 1**

Path: Y:\NBH\Projects\558G\1001\2024\621\_New\_Bedford\_Harbor\_Status\_Requests\ArcGIS\NBH\_Dredge\_Remediation\_Status\_20240711\_Poster.mxd

Aerial Photography MASSGIS 2021

# Summary of 2025 Accomplishments

(since June 2025 EPA Update)

- **June**

- ☑ Published the draft Explanation of Significant Differences (ESD) #7.

- **July/August**

- ☑ Completed construction of the Pilot Confined Disposal Facility (CDF) cap.
- ☑ Sawyer Street “Area C” soil data collection was completed.

- **September**

- ☑ EPA issued the fifth Five-Year Review of the Site’s remedy.
- ☑ EPA issued ESD #7.

- **October**

- ☑ USACE and Jacobs continued demobilization activities at the Sawyer Street facility.
- ☑ Monitoring and maintenance of remediated salt marshes and sediment caps continued.

- **November/December**

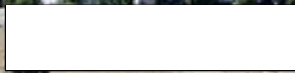
- ☑ EPA completed a risk assessment for “Area C” soil data.
- ☑ EPA completed groundwater monitoring at the Pilot CDF.
- ☑ Lower Harbor CAD Cell and CAD Cell No. 2 Berm design documents and work plans reviewed by EPA and MassDEP.



Photo: Ed Pepin  
(Year Unknown)



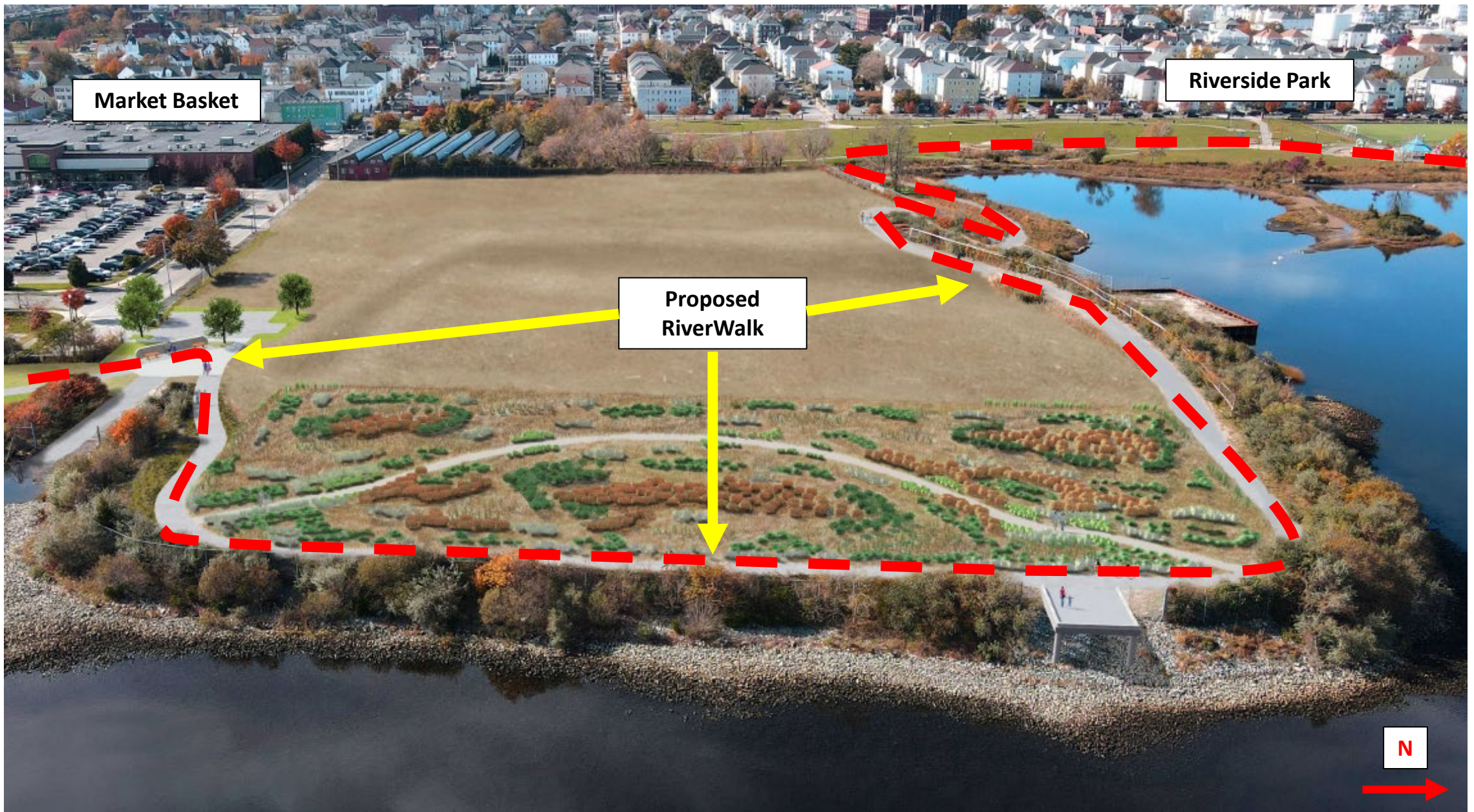
Market Basket



N



Photo: Ed Pepin  
(2025)



Market Basket

Riverside Park

Proposed RiverWalk

N

Photo: Ed Pepin  
(Year Unknown)

Artist's Rendering

# Planned Activities in 2026

- **May**

- ☑ Alternatives Analysis Report (AAR) for “Area C” soils.

- **June**

- ☑ Complete LHCC berm repairs.
- ☑ Assess Pilot CDF vegetative cover.
- ☑ Determine path forward for “Area C” soils cleanup.

- **July – September**

- ☑ Begin administrative process to select a soil cleanup option for “Area C” (EPA Decision Document)

- ☑ Anticipated O&F determination for the Pilot CDF.

- ☑ Anticipated O&F determination for sediment caps.

- ☑ Final inspections for certain salt marsh restoration areas.

- ☑ EPA grant performance period with New Bedford Port Authority ends.

- **December**

- ☑ Anticipated completion of EPA Decision Document for “Area C” soils.

# CAD Cell Berm Construction/Repair

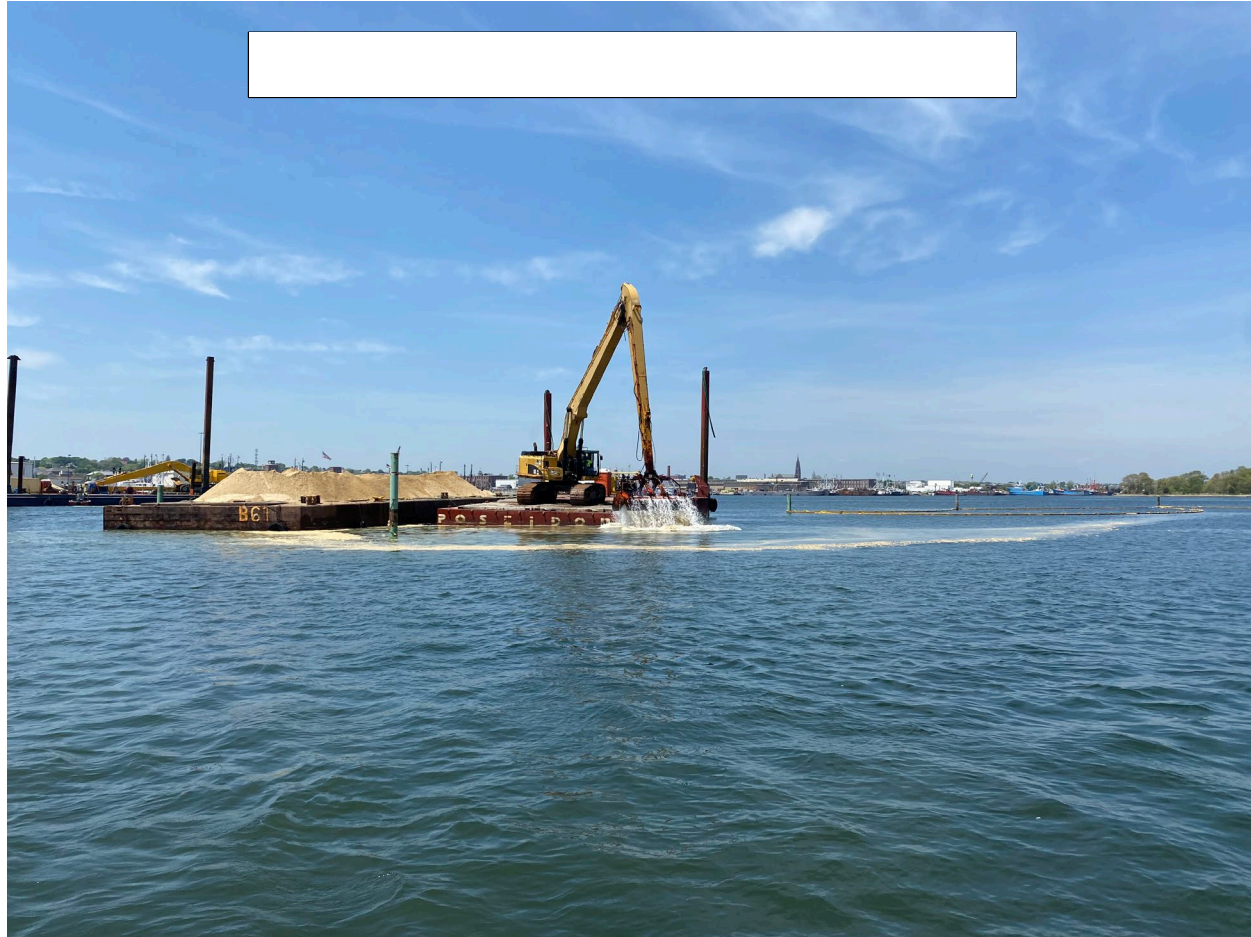
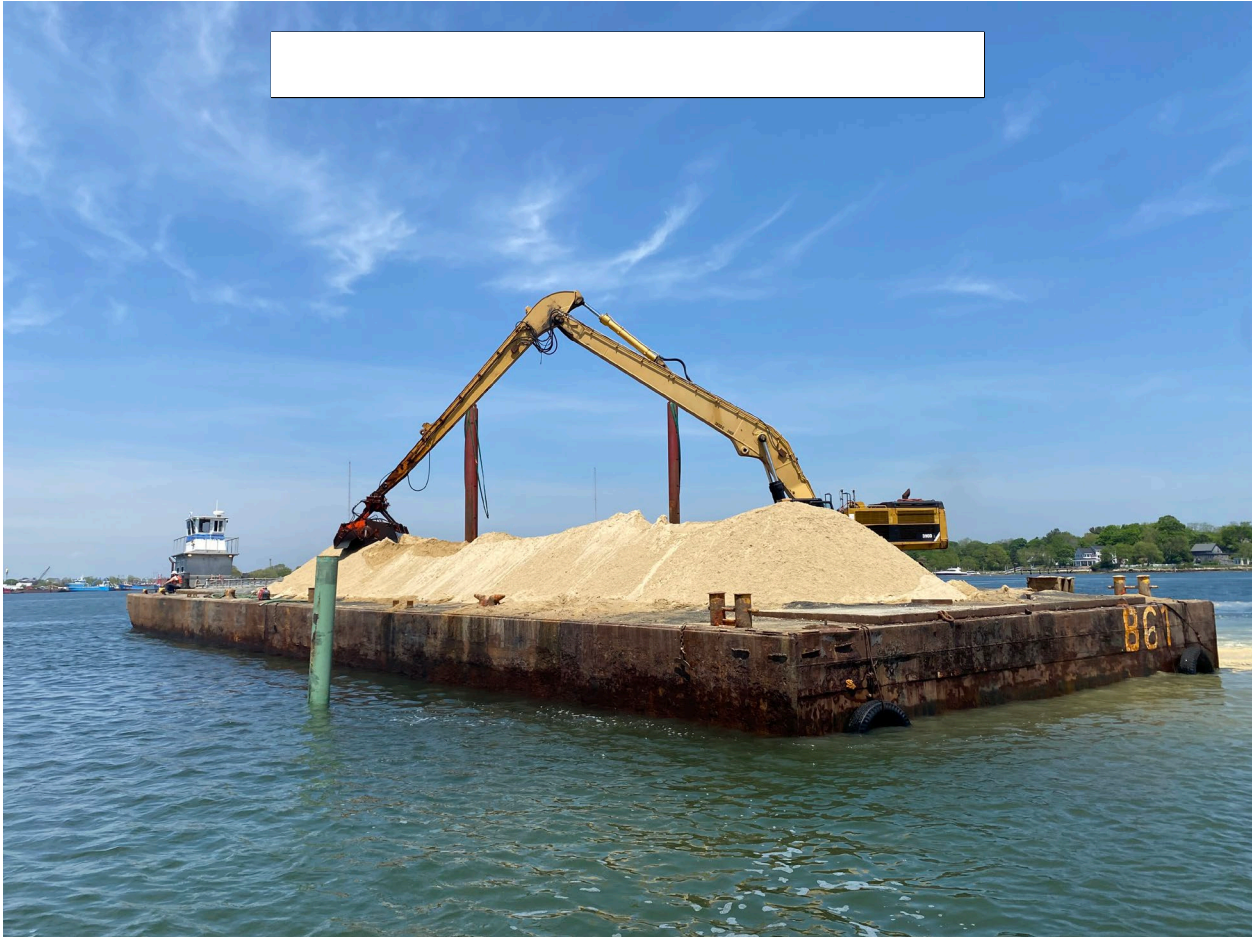
Berm Materials at North Terminal



Berm Materials at CAD Cell No. 2



# CAD Cell Berm Construction/Repair



Photos: Chris Kelly  
(2026)

# Multi-Year Site Activities

- The Sawyer Street facility is secured with fencing to prevent trespassing.
  - Office trailers and an equipment shed remain.
  - Air monitoring for PCBs continues.
    - Results are below the lower Project Risk-Based Goal (RBG) of 110 ng/m<sup>3</sup> or not detectable.
- Planned maintenance and monitoring are ongoing.
  - EPA is transferring operation and maintenance (O&M) responsibilities to MassDEP for remedy components that are operational and functional (O&F).
- Annual seafood monitoring and Seafood Consumption Outreach continue.
- EPA is developing an Institutional Controls Implementation and Assurance Plan (ICIAP or IC Plan).
  - Notices of Activity and Use Limitation (NAULs)
  - Regulated Navigational Areas (RNAs)
  - Deed Notices
  - Local Bylaws



## Salt Marsh Restoration

Photo: East Zone 2  
(Acushnet)

Salt marsh grasses being planted –  
EPA or MassDEP is responsible for  
inspecting and repairing these  
restoration areas.





Photo: Jacobs  
Engineering (2025)

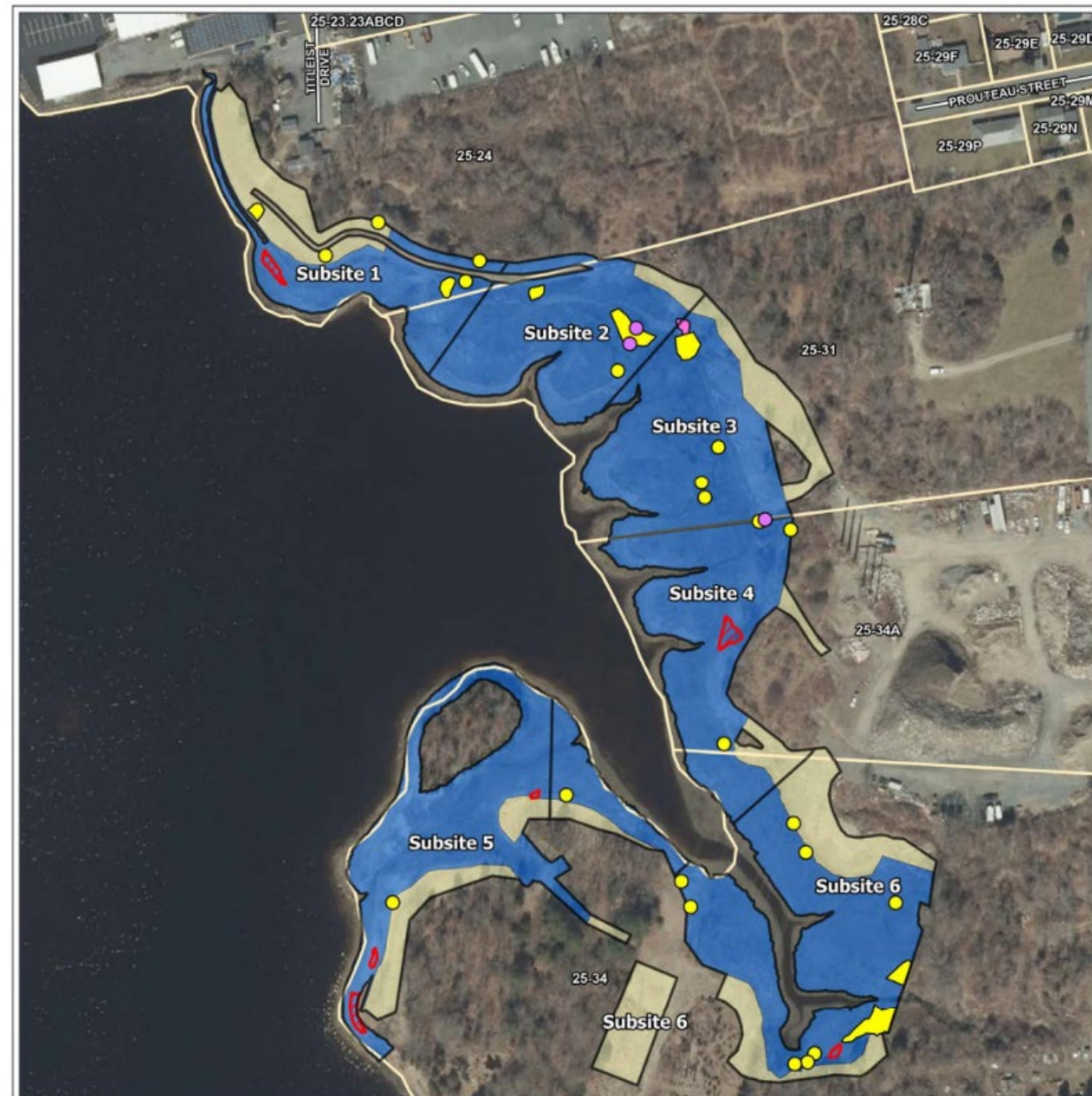
# Salt Marsh Restoration Monitoring and Maintenance

## Photo: East Zone 1 (Acushnet)

EPA or MassDEP is responsible for inspecting and repairing these restoration areas where sparse vegetation, invasive species, and/or erosional areas are observed.

### Legend:

-  Sparse vegetation
-  *Phragmites* (invasive)
-  Purple loose-strive (invasive)
-  Wetland/salt marsh area





## Sediment Cap Monitoring and Maintenance

Photo: Pilot CDF  
Shoreline Cap (New  
Bedford)

EPA is responsible for  
inspecting and repairing the  
ten Upper and Outer Harbor  
sediment caps.

Photo: Dave  
Dickerson (2025)

# 2025 Seafood Consumption Survey

- EPA continues to collaborate with the Community Economic Development Center (CEDC) to survey people utilizing popular fishing spots around the Harbor.
- First year of using mobile tablets to streamline data gathering and analysis resulted in a cleaner dataset.
- **CEDC is looking to hire more outreach coordinators this summer (being multi-lingual is a bonus!).**
- 2025 numbers:
  - 149 total surveys.
  - 77% consume fish from the Harbor.
  - 60% consume fish from the Harbor at least once per month.
  - 68% of people were not surveyed in a previous year (since 2016).



# New Bedford Harbor Superfund Site

Massachusetts regulations and U.S. EPA recommendations for locally-caught seafood

105 CMR 260.05; 322 CMR 629(2) and USEPA recommendations

## Area 1

**Area 1: Do not consume:**  
ANY fish or shellfish of any kind north of the hurricane barrier.



## Area 2: Do not Consume:

- Bottom-feeding fish (scup, tautog, flounder and eel)
- Lobster
- Bluefish
- Striped bass
- Conch
- Black Sea Bass

### Acceptable to consume once per month:

- Quahog (in non-restricted areas; acceptable once per week in Clark's Cove)

## Area 2

## Area 3

## Area 3: Do not consume:

- Lobster
- Bluefish
- Striped bass

### Acceptable to consume once per month:

- Scup
- Black Sea Bass
- Conch

### Acceptable to consume once per week:

- Quahog
- Tautog

Saltwater fishing license required per Mass. DMF

For non-English translation, recommendations for **sensitive populations**, (young children, pregnant women, etc.) **fish identification photos**, and **health information regarding PCBs** use the QR code in top left corner.



= Massachusetts regulations

*Seafood is an important part of a healthy diet provided it's caught in approved areas. The restrictions listed here are due to PCB (Poly-chlorinated biphenyl) contamination.*

# WARNING



**SHELLFISH AND  
FISH CONTAMINATED  
DO NOT EAT**

PCB sediment dredging was completed in 2020 but it will take many years for PCB levels in locally caught fish and shellfish to decrease to levels that are safe to eat.

For more info:

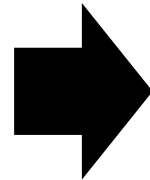
<https://www.epa.gov/new-bedford-harbor>



lighting the way  
**NB**  
new  
bedford

# Stay Updated

<https://www.epa.gov/new-bedford-harbor>



Join our e-mail list!

Mailbox:

[shaheen.aaron@epa.gov](mailto:shaheen.aaron@epa.gov)

**EPA** United States Environmental Protection Agency

Search EPA.gov

Environmental Topics | Laws & Regulations | Report a Violation | About EPA

## EPA Cleanups: Communities around New Bedford Harbor

**Community Updates**  
This site is one of many across the country to receive funding from the Infrastructure Investment and Jobs Act, which invested \$3.5 billion in environmental remediation at Superfund sites on the National Priorities List.  
[Learn more about the funding investments](#)

1 2 3 4

### General Information

Find information about the New Bedford Harbor Site's history, cleanup activities, and upcoming work.  
[Learn more about the Harbor](#)

### Harbor Cleanup Plans and Data

EPA database for the extensive monitoring program conducted in the New Bedford Harbor.  
[Examine cleanup plans and other data](#)

### Environmental Education

Find resources for teachers and students to learn more about the local environment and the New Bedford Harbor Superfund Site.  
[Explore educational materials](#)

### Stay Updated!

- [Participate in our public meetings](#)
- [Know the locally-caught seafood you're eating](#)
- [What's New](#)
- [Newsroom](#)
- [Email EPA Program Contacts](#)

### Five Year Reviews

- [Third Five-Year Review Report, September 2015 \(pdf\)](#) (46.3 MB)
- [Fourth Five-Year Review Report, September 2020 \(pdf\)](#) (44.3 MB)
- [Fifth Five-Year Review Report, September 2023 \(pdf\)](#) (21.2 MB)

### Popular Documents and Resources

- [Seventh Explanation of Significant Differences \(pdf\)](#) (21.7 MB)
- [Fact Sheet Regarding Explanation of Significant Differences, 7 July 2025 \(pdf\)](#) (2.9 MB)
- [Remedial Action Reports](#)
- [Current/Upcoming Work](#)
- [Fact Sheet - Installation of Cover Caps in Upper Harbor, June 2019 \(pdf\)](#) (1 MB)
- [Cleanup Plans & Technical Documents](#)
  - [EPA to Install Interim Sediment Cap Along Aerosol Shoreline in 2018 \(pdf\)](#) (754 KB)
  - [Annual Sediment Monitoring](#)
  - [Harbor Cleanup Plans and Legal/Administrative Records](#)
  - [Artifacts and Shipwrecks](#)
  - [Other Local EPA Projects and Programs](#)
  - [See EPA's Mapping Database for Environmental Information in the New Bedford Area](#)



Thank You

Questions?

**Contact Info:**

**Christopher J. Kelly, PG**  
**Remedial Project Manager**  
**Massachusetts Superfund Section**  
**U.S. EPA – Region 1**  
[kelly.christopher@epa.gov](mailto:kelly.christopher@epa.gov)  
**617-918-1382**

**Aaron Shaheen**  
**Community Involvement Coordinator**  
**Office of Public Affairs**  
**U.S. EPA – Region 1**  
[shaheen.aaron@epa.gov](mailto:shaheen.aaron@epa.gov)  
**617-918-1071**

**Peter Zawadzkas**  
**Project Manager**  
**MassDEP – Bureau of Waste Site Cleanup**  
[peter.zawadzkas@mass.gov](mailto:peter.zawadzkas@mass.gov)