



---

## **Bi-Weekly Progress Update #15**

### **Durham Meadows Superfund Site, Durham, CT**

### **January 23, 2026**

This update summarizes activities completed at the Durham Manufacturing Company (DMC) Study Area Remedial Action between:

**January 12 – January 23, 2026**

During this period, construction efforts were focused on the excavation and disposal of Non-Hazardous material within the Phase 01A area and continue preparations for Phase 01B activities.

#### **Major Activities Performed During the Current Two-Week Reporting Period:**

- Continued excavation and exportation of Non-Hazardous material from Phase 01A
- Continued Import of clean backfill materials
- Continued backfilling of Phase 01A excavation
- Continued the collection of weekly air samples for analysis
- Continued preparations to begin excavation in Phase 01B
- Begin installation of remaining underpinning system along facility building
- Began continuous discharge of treated water

#### **Major Activities Anticipated During the Next Two-Week Reporting Period:**

- Complete excavation and exportation of Non-Hazardous material from Phase 01A
- Continue Import of clean backfill materials
- Continue backfilling of Phase 01A excavation
- Continue the collection of weekly air samples for analysis
- Begin excavation of Phase 01B
- Begin demolition of existing shed in Phase 01B
- Continue discharge of treated water



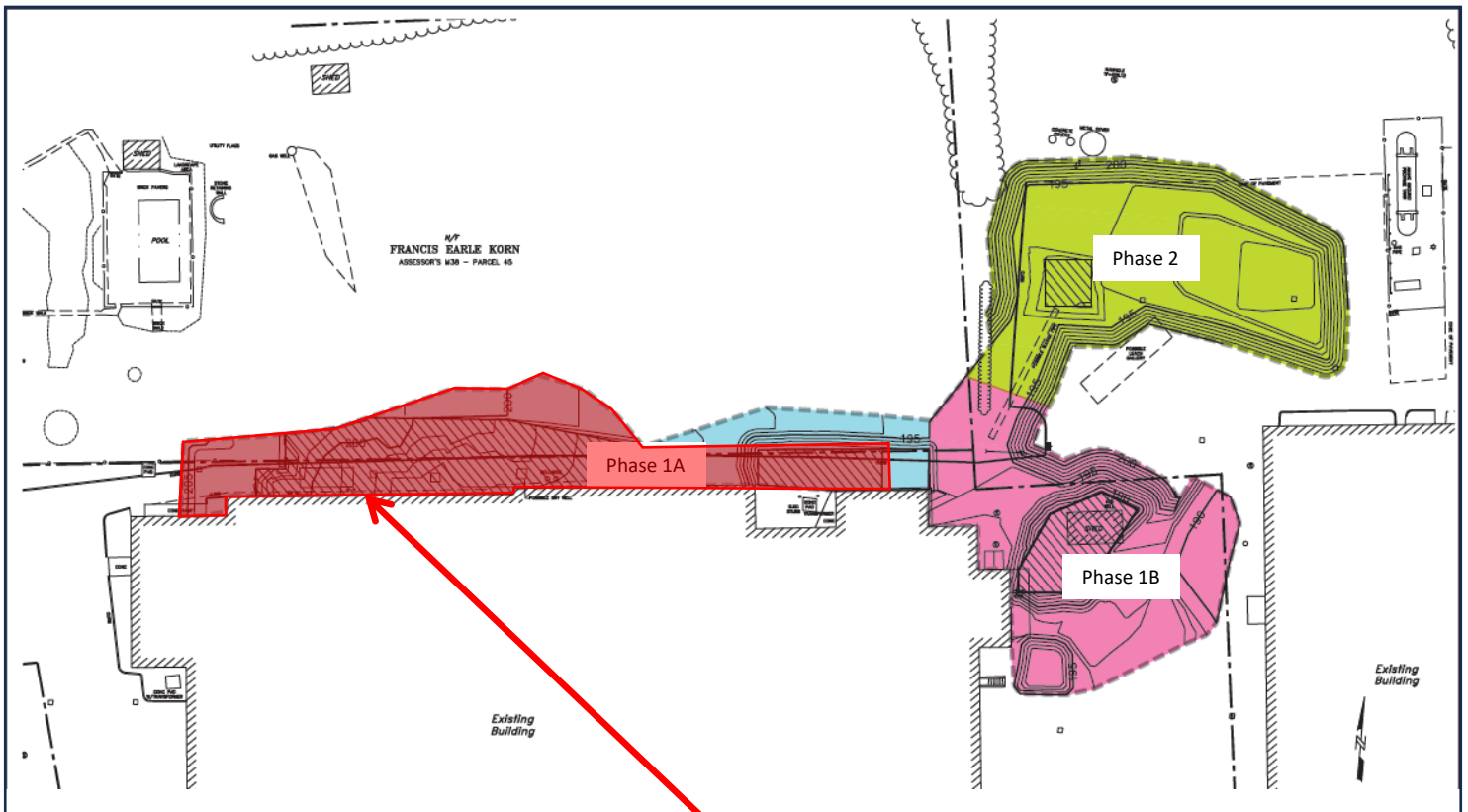
# Bi-Weekly Progress Update #15

## Durham Meadows Superfund Site, Durham, CT

### January 23, 2026

#### Excavation Overview

	Phase 1A	Phase 1B	Phase 2
Start Date	8/25/2025	Not Started	Not Started
End Date			
Percent Complete	87.7%	0%	0%



Excavation occurring on the central portion of Phase 01A and along the facade of the facility building and western portion of Phase 01A



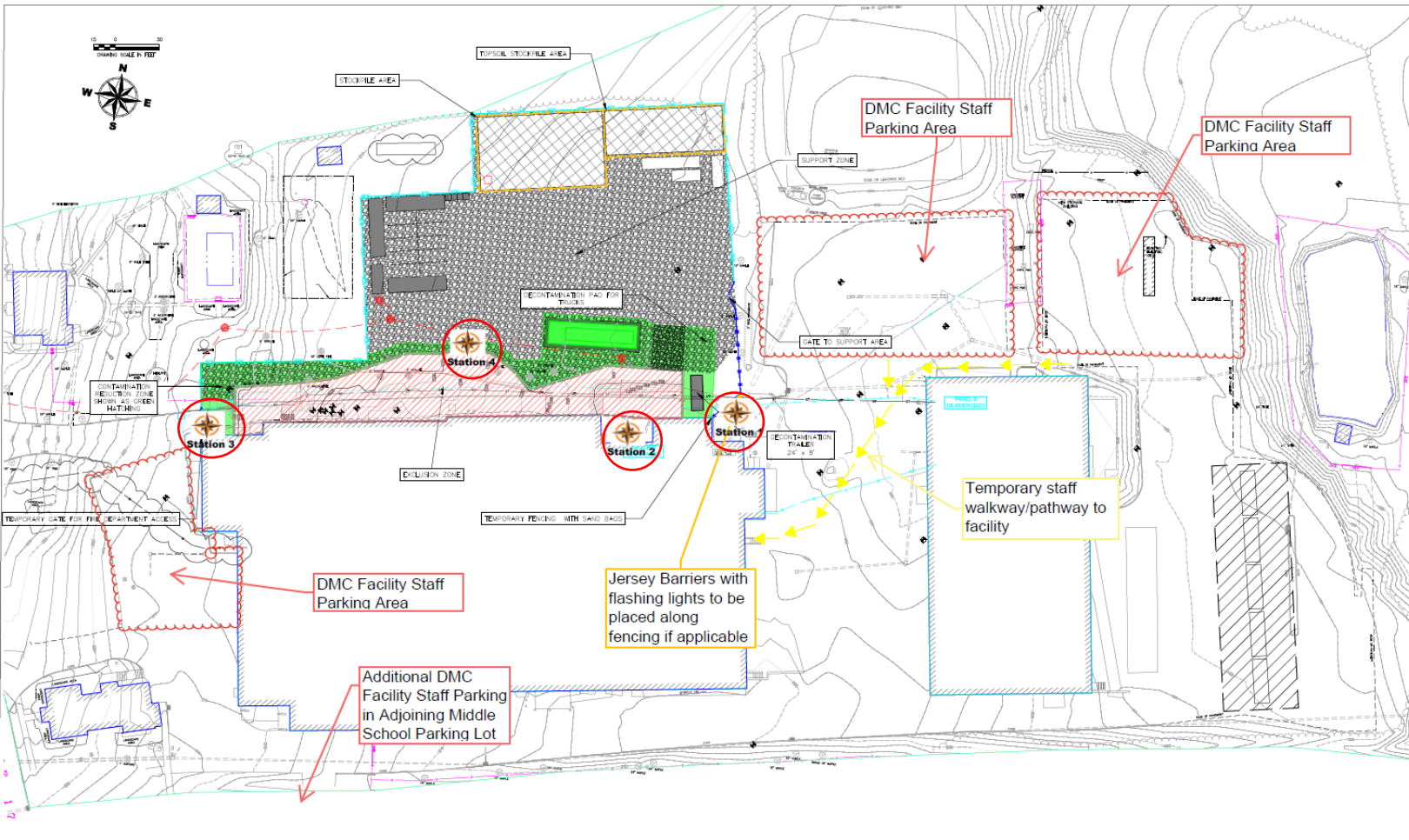
# Bi-Weekly Progress Update #15

## Durham Meadows Superfund Site, Durham, CT

### January 23, 2026

### Air Monitoring

- Weekly confirmatory sampling results are being compared to baseline (i.e., pre-excavation) monitoring results and the USEPA defined acceptable air conditions for each site-specific contaminant of concern. Weekly confirmatory sampling has continued through January.
- Project work now isolated in Phase 01A area. A total of 4 air monitoring stations are set up with continuous real-time monitoring around phase area. No exceedances observed that are relevant to construction activities.



Revisions		
Initial Submittal - RFY00	3/14/2025	
First Revision - RFV01	4/17/2025	
Second Revision - REV02	7/23/2025	



DURHAM MANUFACTURING COMPANY  
Construction Site Plan - Phase 01A  
PREPARED BY:  
US Army Corps of Engineers

002



US Army Corps  
of Engineers®  
New England District



# Bi-Weekly Progress Update #15

## Durham Meadows Superfund Site, Durham, CT

### January 23, 2026

### Vibration and Noise Monitoring

- Vibration Threshold: 0.40 in/sec
- Highest Reading: 0.754 in/sec on 1/20/2026 @ 12:50 PM
  - Highest reading occurred at vibrational monitor #2 (VM#2) due to slide rail installation adjacent to monitor location. Readings returned below threshold immediately after highest reading observed.
- Noise Threshold: 101.2 dBA
  - Noise threshold is set for informational purposes only, as the Town of Durham's noise ordinances exclude noise generated by construction equipment operated during daytime hours.
- Highest dB Reading: 95.3 dBA on 1/15/2026 @ 5:23 PM

### Seismograph & TM Location Plan

Monitoring Devices Installed on 6-6-25





# Bi-Weekly Progress Update #15

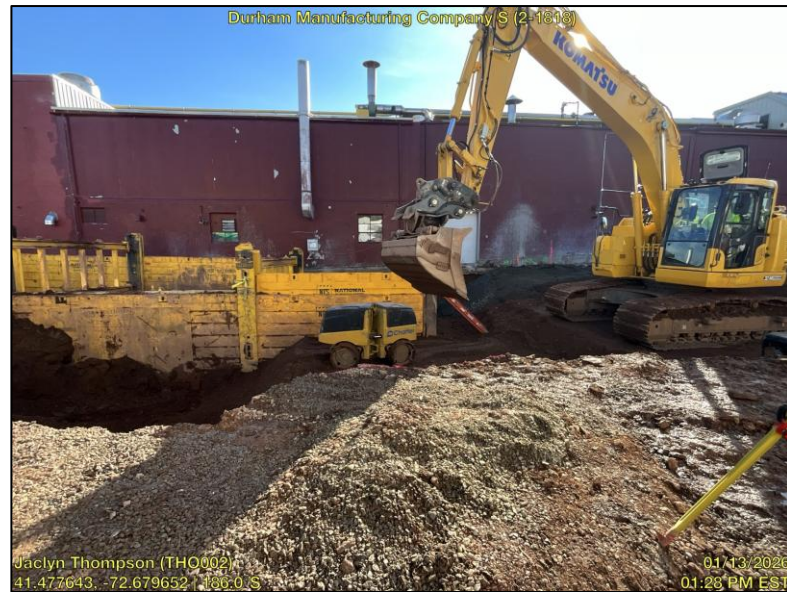
## Durham Meadows Superfund Site, Durham, CT

### January 23, 2026

#### Progress Photos



1/13: Excavation and exportation of Non-Hazardous material from Phase 01A



1/13: Backfilling and compaction of Phase 01A



1/16: Installation of underpinning system along facility building



1/23: Relocation and installation of temporary trench support system along facility building