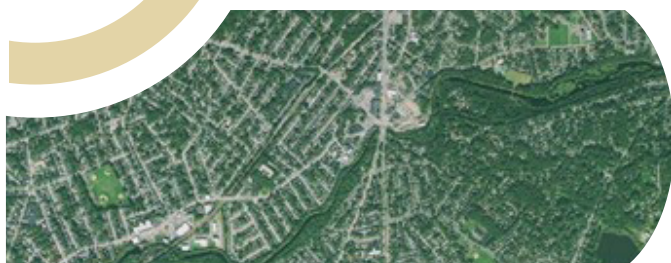


SUPERFUND

# Lower Neponset River Site

## Boston/Milton, MA



**THE SUPERFUND PROGRAM** protects human health and the environment by investigating and cleaning up often-abandoned hazardous waste sites and engaging communities throughout the process. Many of these sites are complex and need long-term cleanup actions. Those responsible for contamination are held liable for cleanup costs. EPA strives to return previously contaminated land and groundwater to productive use.

### DESCRIPTION

The Lower Neponset River Superfund Site (the Site) is currently identified by the U.S. Environmental Protection Agency (EPA) as a 3.7-mile stretch of the Neponset River from the point where it merges with the Mother Brook (a tributary to the Neponset River located upstream of Dana Avenue in Hyde Park) and extends downstream to the Walter Baker Chocolate Dam (located upstream of Adams Street in Dorchester/Milton). Based on EPA sampling conducted in 2023, the first mile of the river contains contaminated sediment, riverbank soils, and surface water and generally has elevated concentrations of polychlorinated biphenyls (PCBs), dioxins and furans, pesticides, metals, volatile organic compounds, and semi-volatile organic compounds. The Site borders residential, commercial, industrial, and public land, including the Neponset River Greenway. Historically, many mills and industries operated along, and upstream of, the Site in the neighborhoods of Hyde Park, Mattapan, Dorchester and Milton. These mills and other industrial facilities in the area may have contributed to the river contamination.

### UPCOMING ACTIVITY

The draft Engineering Evaluation/Cost Analysis (EE/CA) is being developed, which is a process and report that includes environmental sampling, monitoring, and survey information on the nature and extent of contamination for potential cleanup methods at Superfund Sites. Once the EE/CA is final, EPA will publish the EE/CA report and announce the formal public comment period. This announcement will occur through a series of community outreach activities, many of which are outlined in the Community Involvement Plan (CIP) located on the front page of the EPA Lower Neponset River Superfund Site webpage in the "Community Corner" section ([www.epa.gov/neponsetriver](http://www.epa.gov/neponsetriver)).

In the spring of 2025, EPA will also collect the remaining surface water and pore water samples throughout the Site. Additionally, EPA will be starting the groundwater investigation to support data collection efforts needed to complete the Remedial Investigation.

### KEY CONTACTS:

#### ZANETTA PURNELL

EPA Community  
Involvement Coordinator  
857-286-6766

#### NATALIE BURGO

EPA Remedial Project Manager  
617-918-1331  
[burgo.natalie@epa.gov](mailto:burgo.natalie@epa.gov)

#### ALEXANDER "TRISTAN" PLUTA

EPA Remedial Project Manager  
617-918-1258  
[pluta.alexander@epa.gov](mailto:pluta.alexander@epa.gov)

### GENERAL INFO:

#### TOLL-FREE CUSTOMER SERVICE

1-888-EPA-7341

### LEARN MORE AT:

[www.epa.gov/neponsetriver](http://www.epa.gov/neponsetriver)

continued >>



## COMMUNITY PARTICIPATION

**Community Open House and Public Meeting** – The EPA plans to host a series of open houses and a public meeting to support community engagement efforts related to the EE/CA. EPA will provide the additional information soon, including the date and location of these meetings.

**EE/CA Public Comment Period** – A “public comment period” for the EE/CA is a designated timeframe when the public can submit their formal comments on EPA’s proposed action. Commenting is an important way to make your voice heard in decision-making. Public comments can strengthen environmental decisions by providing EPA with facts or perspectives that we may not have considered during the draft process. Tips for providing effective comments on EPA actions can be found here: <https://www.epa.gov/publicnotices/tips-providing-effective-comments-epa-actions>.

**Community Advisory Group (CAG)** – Community members who live near and/or are impacted by the Site have formed a CAG. CAGs provide a way for community members to gather and exchange information, discuss their needs and concerns related to a Superfund Sites cleanup with EPA, and be part of the decision making process with EPA. Additionally, the CAG has obtained Technical Assistance Services for Communities (TASC) support, which provides an independent technical advisor to explain technical findings, assist the community in better understanding complex environmental issues, answer community questions, craft public comments, and support the community’s active roles in protecting public health and the environment. The TASC services are specially being applied to the [Phase 1 Data Evaluation Summary Memorandum report](#) and the upcoming EE/CA.

The members of the CAG represent a range of community interests. If you are interested in learning more about, or possibly joining the CAG, please reach out directly to the Site’s Community Involvement Coordinator, ZaNetta Purnell: [R1Neponset@epa.gov](mailto:R1Neponset@epa.gov)

## ALONG THE RIVER

### The Riverside Square PCB Site

The Riverside Square PCB Site is located along the northern bank of the Lower Neponset River within the Riverside Square area in Hyde Park. From the 1930s through the 1970s, several industries using PCBs operated in the Neponset River Basin, one of the most industrialized basins in the United States. In 1962 and 1964, to control flooding, the river was dredged by the Metropolitan District Commission, now a part of the Massachusetts Department of Conservation and Recreation (DCR). Dredging is the process of cleaning out the bed of the river by scooping out sediment (mud) and debris with a machine called a dredge. The dredged materials, or “spoils,” were placed in several locations along the banks of the river, essentially creating new land. The Riverside Square PCB Site is one of those riverbank locations. Preparations for excavation are currently underway, and Site work is expected to continue throughout 2025.



**SUPERFUND**

## **HELPFUL LINKS**

Remedial Investigation, A part of the Superfund Cleanup Process:

<https://www.epa.gov/superfund/about-superfund-cleanup-process>

Non-Time Critical Removal Action Under CERCLA/Superfund, Conducting Engineering Evaluation/Cost Analysis (EE/CA):

<https://semspub.epa.gov/work/11/175656.pdf>

Contaminant of Concern, Polychlorinated Biphenyls (PCBs):

<https://www.atsdr.cdc.gov/toxfaqs/tfacts17.pdf>

Phase 1 Data Evaluation Summary Memorandum report, Sampling Data for the First Mile of the Upper River:

<https://semspub.epa.gov/work/01/100032178.pdf>

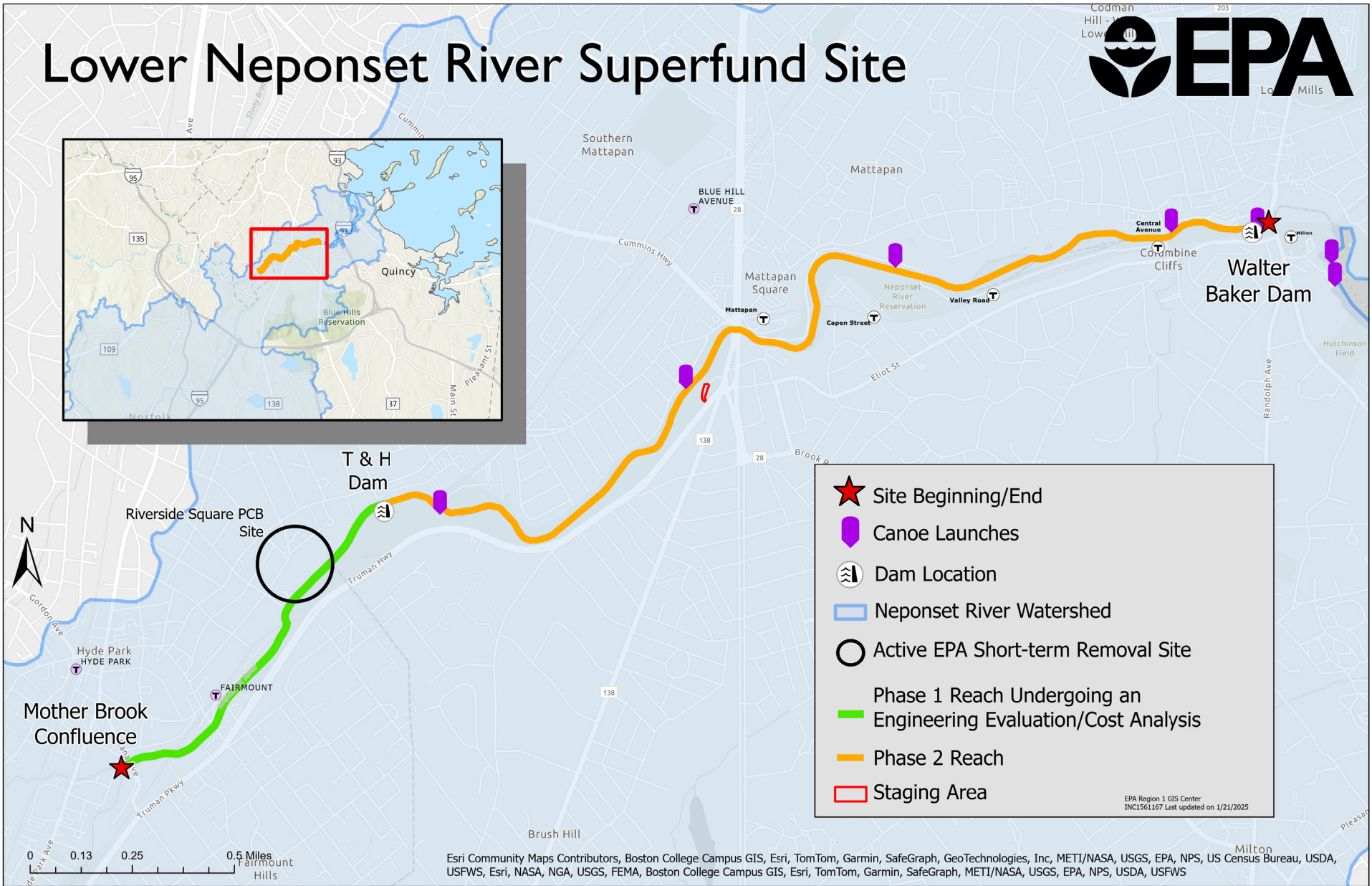
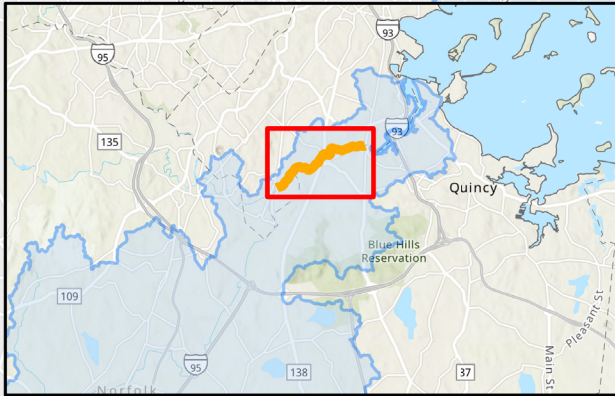
Community Advisory Group (CAG)

<https://www.epa.gov/neponsetriver/stay-updated-get-involved-lower-neponset-river-bostonmilton-ma#CAG>

Technical Assistance Services for Communities (TASC), Support Resource:

<https://www.epa.gov/superfund/technical-assistance-services-communities-tasc-program>

# Lower Neponset River Superfund Site



- ★ Site Beginning/End
- 🚣 Canoe Launches
- 🏰 Dam Location
- 🌊 Neponset River Watershed
- ⊙ Active EPA Short-term Removal Site
- 🟢 Phase 1 Reach Undergoing an Engineering Evaluation/Cost Analysis
- 🟠 Phase 2 Reach
- 📐 Staging Area

EPA Region 1 GIS Center  
INC1561167 Last updated on 1/21/2025

Esri Community Maps Contributors, Boston College Campus GIS, Esri, TomTom, Garmin, SafeGraph, GeoTechnologies, Inc, METI/NASA, USGS, EPA, NPS, US Census Bureau, USDA, USFWS, Esri, NASA, NGA, USGS, FEMA, Boston College Campus GIS, Esri, TomTom, Garmin, SafeGraph, METI/NASA, USGS, EPA, NPS, USDA, USFWS