



Environmental Remediation Group

Olin Corporation
490 Stuart Road NE
Cleveland, TN 37312
ETBowen@olin.com
Phone: 203-887-4353

January 31, 2025

Ms. Melanie Morash and Mr. Christopher Kelly
U. S. Environmental Protection Agency (USEPA), Region 1
5 Post Office Square, Suite 100
Mail Stop OSRR07-4, Boston, MA 02109-3912

RE: Upland Soil Pre-Design Investigation Schedule
Olin Chemical Superfund Site
51 Eames Street, Wilmington, MA

Dear Ms. Morash & Mr. Kelly:

Enclosed are the Upland Soil Pre-Design Investigation schedules for the Olin Chemical Superfund Site (the Site) in Wilmington, MA. The schedules include the Pre-Design soil chemical characterization work that will be completed by WSP on behalf of Olin Corporation, and a separate schedule for geotechnical investigation activities to be performed by Wilmington Woburn Industrial, LLC (WWI) and their contractors that will support design of the building that is expected to serve as a component of the permanent Containment Area cap. These schedules were developed to be consistent with requirements of the September 28, 2023 United States District Court, District of Massachusetts Consent Decree (CD) and Statement of Work (SOW).

The schedule for chemical characterization work that will be completed by WSP has been updated in response to comments received from the United States Environmental Protection Agency (USEPA) on January 10, 2025. Because USEPA's January 10, 2025 conditional approval letter did not contain any comments on the schedule for geotechnical investigation activities to be performed by WWI, the version included here is consistent with the previously submitted schedule.

If you have questions about the attached schedules or would like to discuss, please contact me by phone at (203) 887-4353 or via email at ETBowen@Olin.com.

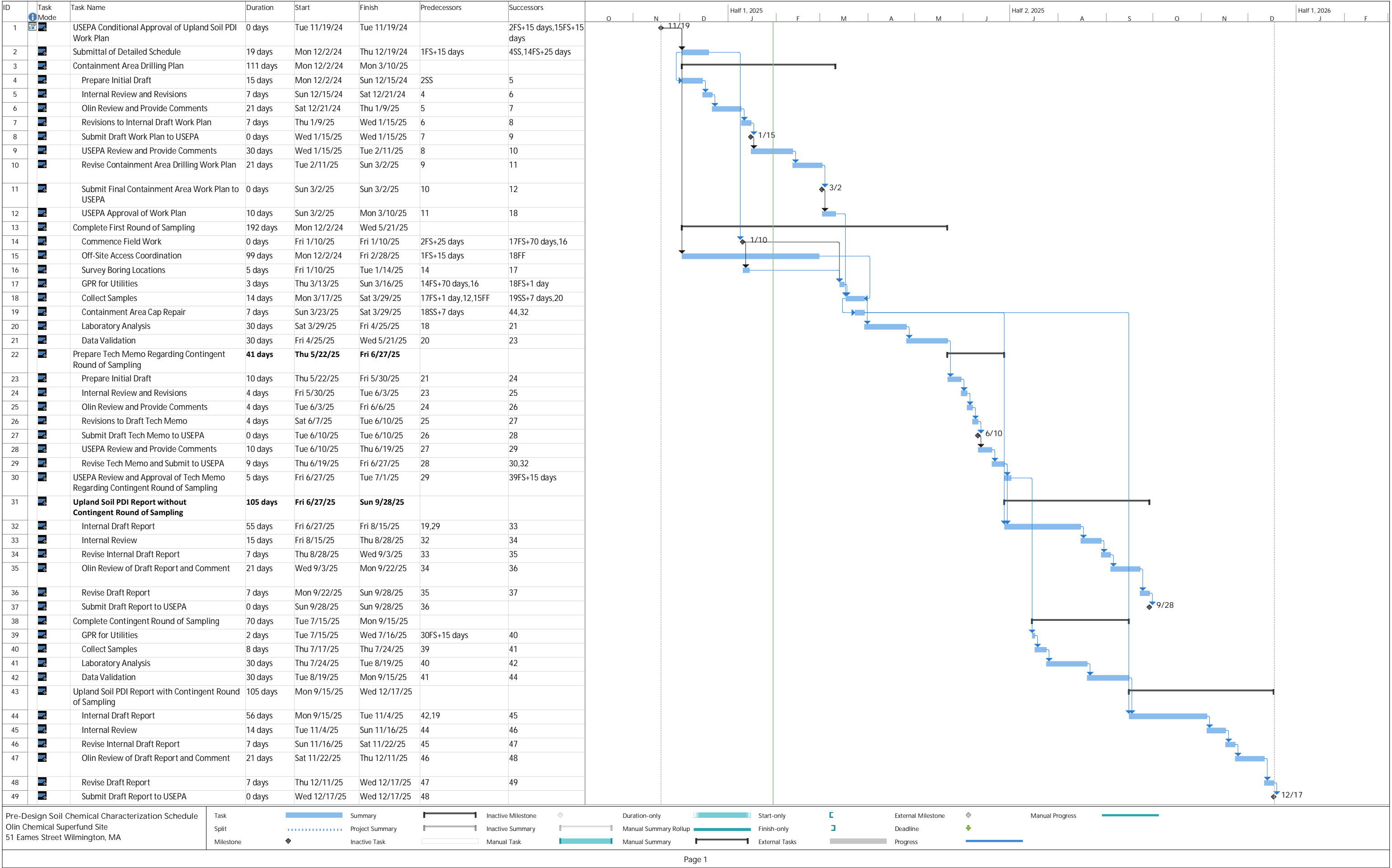
Sincerely,
OLIN CORPORATION

A handwritten signature in blue ink that reads "Elizabeth T. Bowen".

Elizabeth T. Bowen
Principal, Environmental Remediation

Enclosure:
Upland Soil Pre-Design Investigation Schedules

Cc: Garry Waldeck – Massachusetts Department of Environmental Protection
Seth Schofield – Commonwealth of Massachusetts Office of the Attorney General
James Cashwell – Olin Corporation
John Rice, Nelson Walter – WSP USA
William Buckley, Brian Poitras – GFI Partners, LLC
Robert Bird – SLR International Corporation



PRE-CONSTRUCTION DATA COLLECTION SCHEDULE

Olin Chemical Superfund Site
51 Eames Street
Wilimington, MA

D	Task Mode	Task Name	Duration	Start	Finish	Predecessors	Half 1, 2025												Half 2, 2025						
							O	N	D	J	F	M	A	M	J	J	A	S	O	N	D				
1		USEPA Conditional Approval of Upland Soil PDI Work Plan	0 days	Tue 11/19/24	Tue 11/19/24					11/19															
2		Submittal of Detailed Schedule	19 days	Mon 12/2/24	Thu 12/19/24	1FS+15 days																			
3		Containment Area Drilling Plan	111 days	Mon 12/2/24	Mon 3/10/25																				
4		Prepare Initial Draft	15 days	Mon 12/2/24	Sun 12/15/24	2SS																			
5		Internal Review and Revisions	7 days	Sun 12/15/24	Sat 12/21/24	4																			
6		Olin Review and Provide Commer	21 days	Sat 12/21/24	Thu 1/9/25	5																			
7		Revisions to Internal Draft Work Plan	7 days	Thu 1/9/25	Wed 1/15/25	6																			
8		Submit Draft Work Plan to USEPA	0 days	Wed 1/15/25	Wed 1/15/25	7					1/15														
9		USEPA Review and Provide Comments	30 days	Wed 1/15/25	Tue 2/11/25	8																			
10		Revise Containment Area Drilling Work Plan	21 days	Tue 2/11/25	Sun 3/2/25	9																			
11		Submit Final Containment Area Work Plan to USEPA	0 days	Sun 3/2/25	Sun 3/2/25	10						3/2													
12		USEPA Approval of Work Plan	10 days	Sun 3/2/25	Mon 3/10/25	11																			
13		Complete Geotechnical Borings	110.5 days	Fri 1/10/25	Fri 4/18/25																				
14		Commence Field Work	0 days	Fri 1/10/25	Fri 1/10/25	2FS+25 days				1/10															
15		Survey Boring Locations	5 days	Fri 1/10/25	Tue 1/14/25	14																			
16		GPR for Utilities	3 days	Thu 3/13/25	Sun 3/16/25	14FS+70 days,15																			
17		Soil Borings	21 days	Mon 3/31/25	Fri 4/18/25	16FS+1 day,12																			
18		Containment Area Cap Repair	10 days	Wed 4/9/25	Fri 4/18/25	17SS+11 days																			
19		Upland Soil PDI Report	242 days	Fri 4/18/25	Wed 11/19/25																				
20		Internal Draft Report	30 days	Fri 4/18/25	Thu 5/15/25	18																			
21		Internal Review	14 days	Thu 5/15/25	Tue 5/27/25	20																			
22		Revise Internal Draft Report	7 days	Tue 5/27/25	Mon 6/2/25	21																			
23		Olin Review of Draft Report and Comment	22 days	Sat 10/25/25	Thu 11/13/25	22																			
24		Revise Draft Report	7 days	Thu 11/13/25	Wed 11/19/25	23																			
25		Submit Draft Report to USEPA	0 days	Wed 11/19/25	Wed 11/19/25	24																			
							<div><div>Task</div><div>Split</div><div>Milestone</div><div>Summary</div></div> <div><div><div></div></div><div><div></div></div><div><div></div></div><div><div></div></div></div> <div><div>Project Summary</div><div>Inactive Task</div><div>Inactive Milestone</div><div>Inactive Summary</div></div> <div><div><div></div></div><div><div></div></div><div><div></div></div><div><div></div></div></div> <div><div>Manual Task</div><div>Duration-only</div><div>Manual Summary Rollup</div><div>Manual Summary</div></div> <div><div><div></div></div><div><div></div></div><div><div></div></div><div><div></div></div></div> <div><div>Start-only</div><div>Finish-only</div><div>External Tasks</div><div>External Milestone</div></div> <div><div><div></div></div><div><div></div></div><div><div></div></div><div><div></div></div></div> <div><div>Deadline</div><div>Progress</div><div>Manual Progress</div><div></div></div> <div><div><div></div></div><div><div></div></div><div><div></div></div><div><div></div></div></div>																		