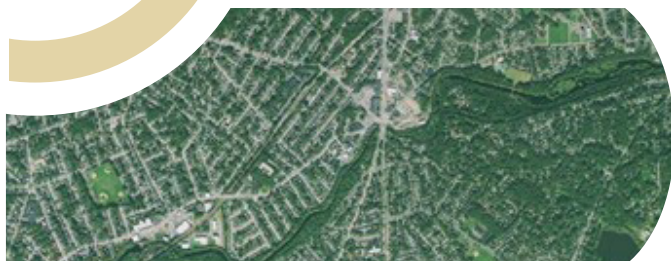


SUPERFUND

# Lower Neponset River Site

## Boston/Milton, MA



**THE SUPERFUND PROGRAM** protects human health and the environment by investigating and cleaning up often-abandoned hazardous waste sites and engaging communities throughout the process. Many of these sites are complex and need long-term cleanup actions. Those responsible for contamination are held liable for cleanup costs. EPA strives to return previously contaminated land and groundwater to productive use.

### ACTIVITIES

During 2023, EPA completed the initial sampling phase of its remedial investigation. EPA conducted sampling in the area from where Mother Brook and the Neponset River meet downstream to the Tileston and Hollingsworth (T&H) Dam (Phase 1 Sampling). EPA will create an engineering evaluation and cost analysis from the data it collected. Based on the outcome of that evaluation and analysis, EPA may conduct a non-time critical removal action. That action may include the removal of sediment contaminated with polychlorinated biphenyls (PCBs) that have collected behind the T&H Dam and in other "hot spot" areas. EPA will also use this data as part of the comprehensive Remedial Investigation and Feasibility Study for the full 3.7-mile-long site. EPA plans to begin the next phase of its investigation and sampling in Spring 2024, which will primarily take place from the T&H Dam downstream to the Walter Baker Dam (Phase 2 Sampling).

### COMMUNITY PARTICIPATION

**Community Involvement Plan** – This plan is available at <https://www.epa.gov/neponsetriver>. The plan will help ensure meaningful community involvement throughout the Superfund cleanup process. It is informed by community input and is a "living document." EPA will update the community involvement plan as it assesses and cleans up the site in the coming years.

**Community Meeting** – EPA will host a public meeting in early 2024. EPA will share information about work completed to date and activities that we are planning in the coming year. EPA will provide the date and location of the meeting in January 2024.

**Community Advisory Group** – As requested by the community, EPA is gathering resources to help community members impacted by the LNR Site to form a Community Advisory Group. The members of the advisory group will represent diverse community interests. The advisory group will provide a public forum for community members to discuss their needs and concerns about the site. EPA will share information about forming a Community Advisory Group during the public meeting in early 2024.

### KEY CONTACTS:

#### ZANETTA PURNELL

EPA Community  
Involvement Coordinator  
617-918-1306  
[purnell.zanetta@epa.gov](mailto:purnell.zanetta@epa.gov)

#### NATALIE BURGO

EPA Remedial Project Manager  
617-918-1331  
[burgo.natalie@epa.gov](mailto:burgo.natalie@epa.gov)

#### ALEXANDER "TRISTAN" PLUTA

EPA Remedial Project Manager  
617-918-1258  
[pluta.alexander@epa.gov](mailto:pluta.alexander@epa.gov)

### GENERAL INFO:

**TOLL-FREE  
CUSTOMER SERVICE**  
1-888-EPA-7341

### LEARN MORE AT:

[www.epa.gov/neponsetriver](http://www.epa.gov/neponsetriver)

continued >>



SUPERFUND

## ALONG THE RIVER

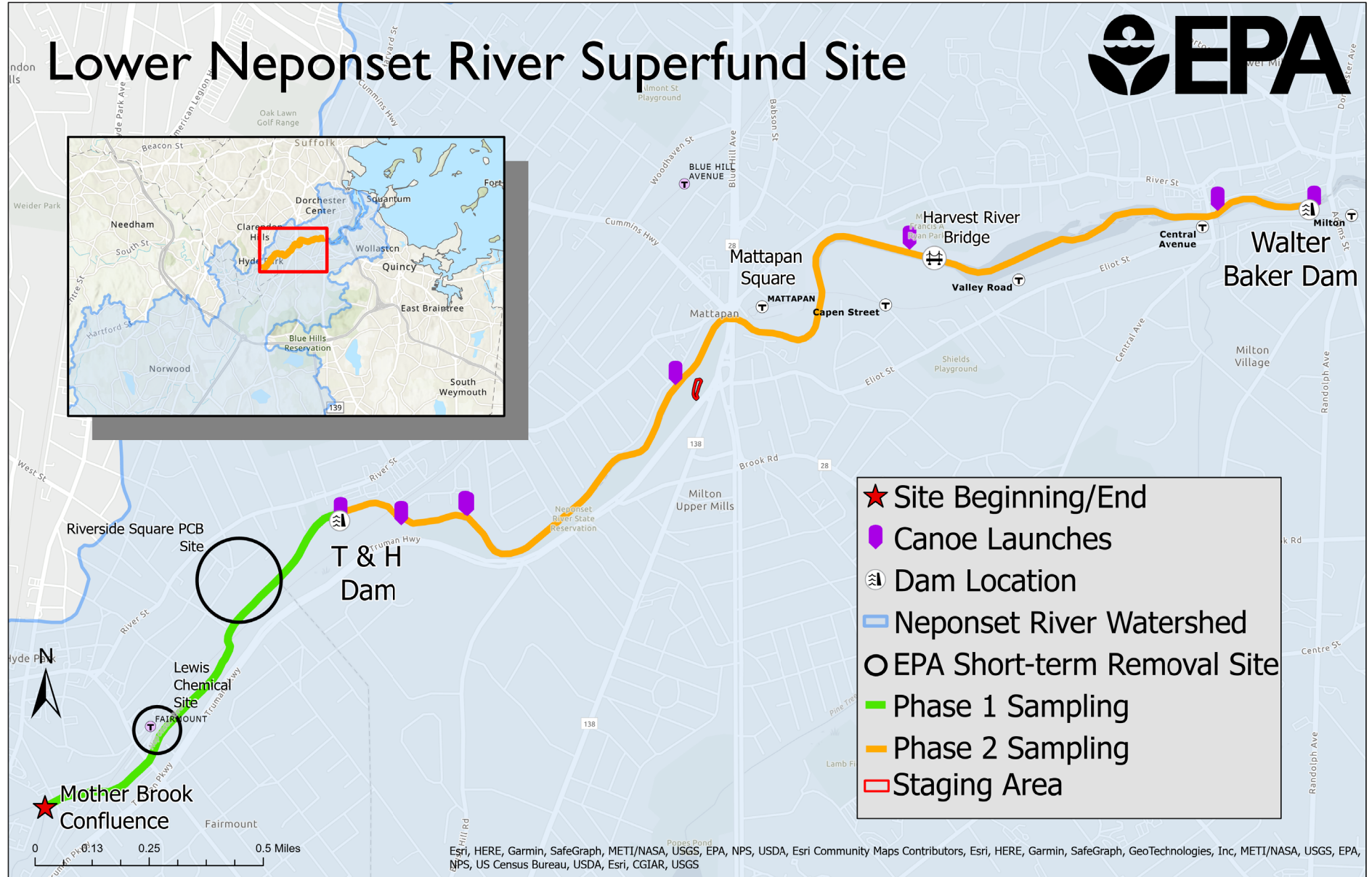
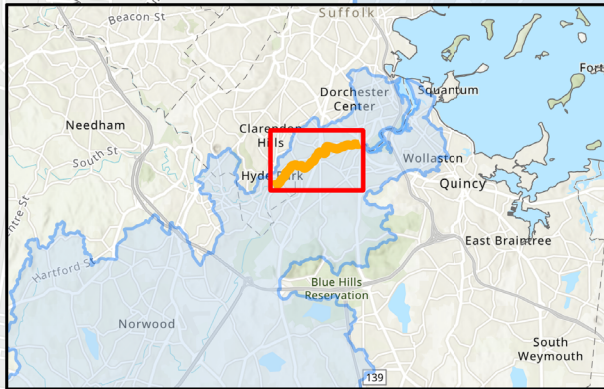
### **Lewis Chemical Removal Action**

During 2023, EPA excavated soils contaminated with PCBs, volatile organic compounds, and asbestos from the former Lewis Chemical Site located on Fairmount Court in Hyde Park. EPA shipped over 1,000 tons of contaminated soils from the site to a hazardous waste disposal facility in Vermont. EPA is now continuing work excavating 1,000 more tons of soil and is waiting for sampling results to ensure proper disposal. To ensure public and worker safety, EPA is monitoring the air during all activities to make sure contamination is not going into the air and is also taking steps to reduce odors.

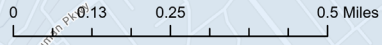
### **RIVERSIDE SQUARE REMOVAL INVESTIGATION**

During 2023, EPA collected about 500 soil samples from this site located in Hyde Park. EPA is currently evaluating the results of this sampling to decide if the removal of any contaminated soil is needed.

# Lower Neponset River Superfund Site



- ★ Site Beginning/End
- 🚣 Canoe Launches
- 🏰 Dam Location
- 📏 Neponset River Watershed
- EPA Short-term Removal Site
- 🟢 Phase 1 Sampling
- 🟠 Phase 2 Sampling
- 📐 Staging Area



Esri, HERE, Garmin, SafeGraph, METI/NASA, USGS, EPA, NPS, USDA, Esri Community Maps Contributors, Esri, HERE, Garmin, SafeGraph, GeoTechnologies, Inc, METI/NASA, USGS, EPA, NPS, US Census Bureau, USDA, Esri, CGIAR, USGS