



**SUPERFUND**

**NOTICE TO  
ABUTTERS**

# New Bedford Harbor Site

## New Bedford, Acushnet, Fairhaven and Dartmouth, MA

U.S. EPA | HAZARDOUS WASTE PROGRAM AT EPA NEW ENGLAND



**THE SUPERFUND PROGRAM** protects human health and the environment by investigating and cleaning up often-abandoned hazardous waste sites and engaging communities throughout the process. Many of these sites are complex and need long-term cleanup actions. Those responsible for contamination are held liable for cleanup costs. EPA strives to return previously contaminated land and groundwater to productive use.

### ACTIVITIES

Cleanup activities continue at the New Bedford Harbor Site. Sediments in certain shoreline areas are contaminated with PCBs (polychlorinated biphenyls) because of past industrial discharges in the harbor. EPA will continue conducting cleanup activities along certain shoreline areas of the harbor starting in fall 2022 and continuing into 2023.

The next such area to be remediated, shown on the maps on pages 2 and 3, is located on the Acushnet River shoreline in Acushnet from approximately the Eversource electrical sub-station to Pleasant Street (East Zones 2 and 3). Similar shoreline remediation has taken place over the past several years on both sides of the Acushnet River. Sediments contaminated with PCBs will be removed and disposed of at a licensed off-site landfill, and the shoreline will be restored to original conditions.

### WHAT TO EXPECT

Work is expected to begin near the Acushnet sub-station (parcel 25-43) in September 2022. Excavators, bulldozers and all-terrain dump trucks will be utilized on site throughout the excavation and backfill process. Several roll-off trucks per day will transport the excavated sediment down South Main Street and Howland/Coggeshall Street to EPA's Sawyer Street facility in New Bedford for processing and loading on to larger trucks for off-site disposal. Air monitoring will be performed throughout the project to ensure the work is being performed safely.

Once the contaminated shoreline sediment has been excavated and removed, the process of placing clean backfill to reconstruct the shoreline and saltmarshes will begin. Thousands of native saltmarsh grasses, as well as native shrubs and trees will then be planted along the shore in spring 2023.

This cleanup is being conducted by the U.S. EPA and the U.S. Army Corps of Engineers as part of the New Bedford Harbor Superfund Site remediation.

continued >

### KEY CONTACTS

#### DAVID DICKERSON

EPA Project Manager  
617-918-1329  
[dickerson.dave@epa.gov](mailto:dickerson.dave@epa.gov)

#### ZANETTA PURNELL

EPA Community  
Involvement Coordinator  
617-918-1302  
[purnell.zanetta@epa.gov](mailto:purnell.zanetta@epa.gov)

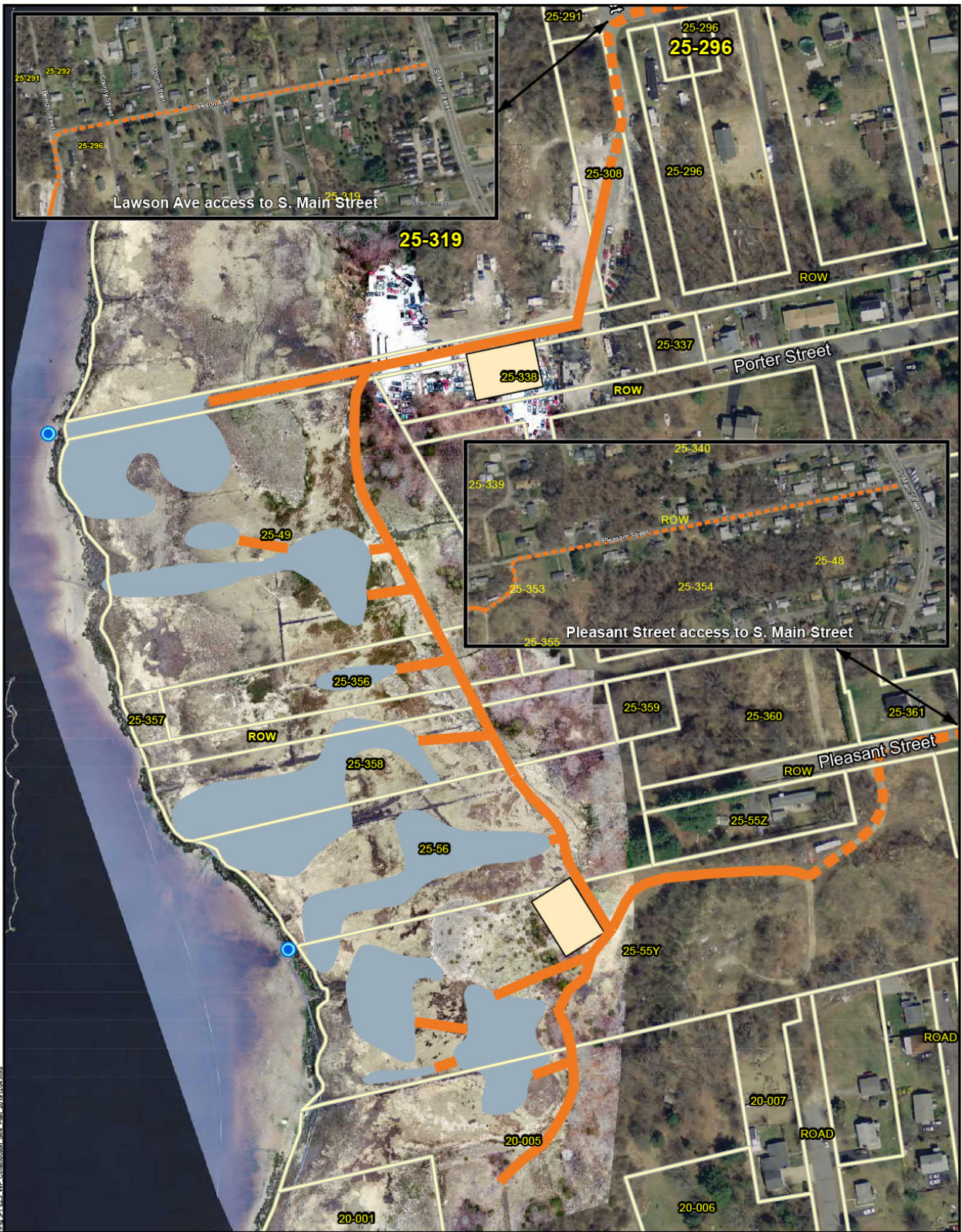
#### EPA TOLL-FREE CUSTOMER SERVICE

1-888-EPA-7341

#### LEARN MORE AT

[www.epa.gov/nbh](http://www.epa.gov/nbh)



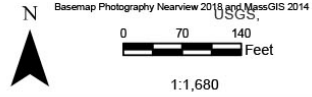


File: \\c:\projects\2019\GIS\20190320\_1015133501\_Aerial\20190320\_1015133501\_Aerial\_Site\_Map\_Aerial.mxd  
 Date: 2019/03/20 10:15:13 AM

**Legend**

- Proposed Limits of Excavation
- Proposed Staging Area / Containment Cell
- Approximate Treated Wastewater Discharge Point
- 15 ft Temporary Gravel Access Road
- Existing Access Road
- MHHW (1.99 ft NAVD88)
- MLLW (-1.97 ft NAVD88)
- Parcel Boundary

Pre-Excavation MHHW and MLLW Elevations NAVD88 ft. Nearview 2018



**JACOBS**

**Intertidal East Zone 3  
Construction Site Plan**

New Bedford Harbor Superfund Site

December 2019

Figure 3-1