



New Bedford Harbor Superfund Site Virtual Public Meeting

October 20th, 2021

6:30PM – 7:30PM



EPA Remedial Project Managers:

Dave Dickerson and Natalie Burgo

Community Involvement Coordinators:

Charlotte Gray and ZaNetta Purnell

Ask questions / share comment

MUTE your PC mic button

The screenshot shows a virtual meeting window titled "Meeting". The top left corner displays the time "00:08". A toolbar contains several icons: a purple box labeled "See participants" points to the participants icon; a blue box labeled "Ask questions / share comment" points to the chat icon; a green box labeled "Turn your video on/off" points to the video icon; a yellow box labeled "MUTE your PC mic button" points to the microphone icon; and a red box labeled "Hang up button" points to the "Leave" button. The main content area features a presentation slide with an aerial map of New Bedford Harbor on the left and text on the right. The text includes the title "New Bedford Harbor Superfund Site Virtual Public Meeting", the date and time "October 20th, 2021 6:30PM – 7:30PM", the EPA logo, and the names of the project managers: "EPA Remedial Project Managers Dave Dickerson and Natalie Burgo".

See participants

Turn your video on/off

Hang up button

Virtual Meeting Participant Instructions

Ground Rules for Online Participation

Our requests:

Keep your microphone muted when not speaking

Respect time limits for questions and comments

Keep comments and chats respectful and appropriate for a public audience

Follow the facilitators' guidance and instructions on how to participate

Project Team

- ZaNetta Purnell – EPA Community Involvement Coordinator
- Charlotte Gray – EPA Community Involvement Coordinator
- Dave Dickerson – EPA Remedial Project Manager
- Natalie Burgo – EPA Remedial Project Manager
- Marie Esten – US Army Corps of Engineers Project Manager
- Paul Craffey – Massachusetts Department of Environmental Protection Project Manager

Agenda



Review of 2021 remedial actions




Video of remedial work taken by local resident, Ed Pepin









Summary of upcoming 2022 remedial actions and community involvement



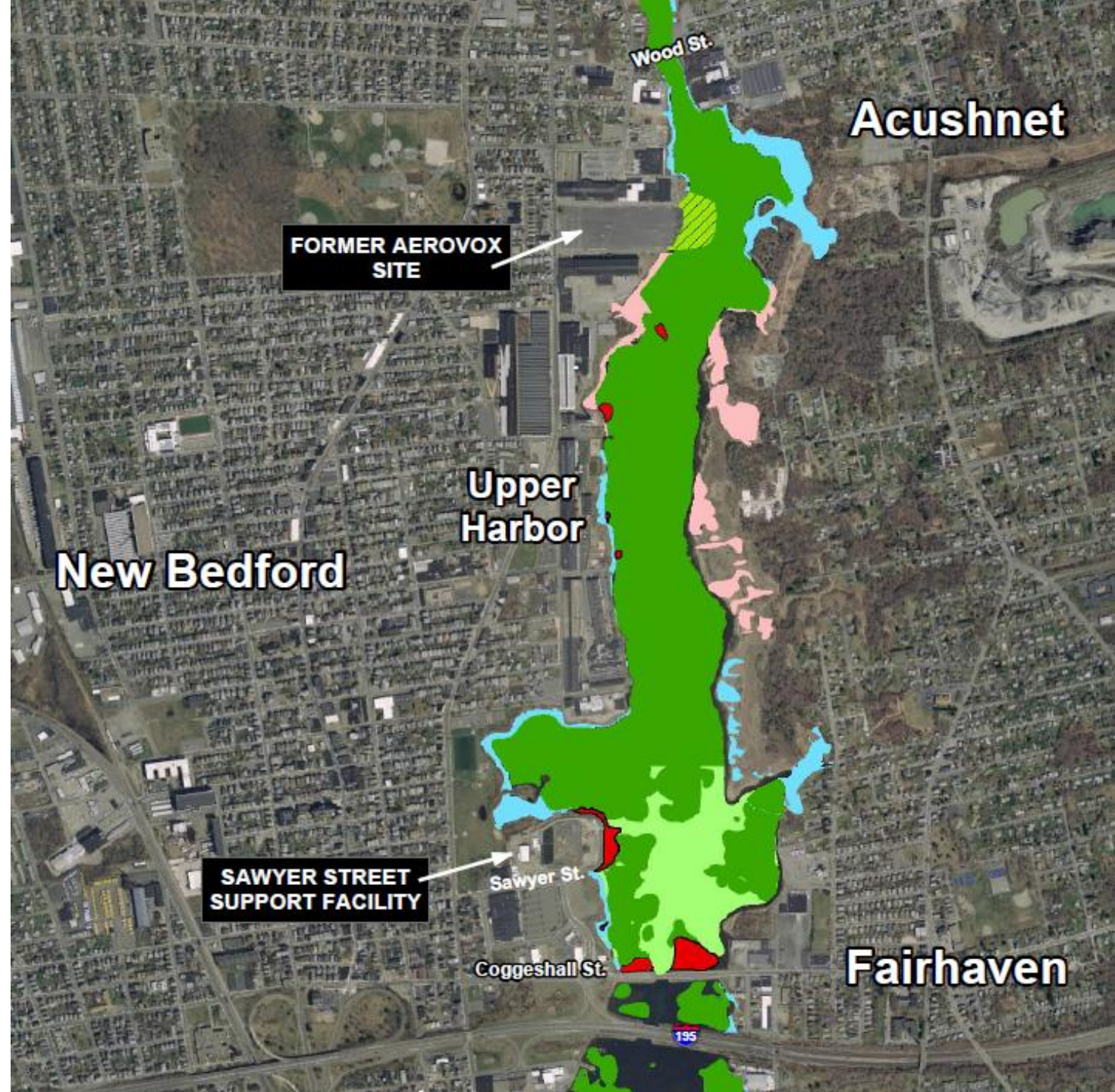
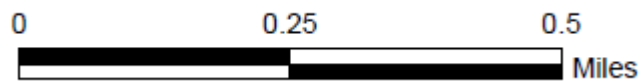
Summary of 2021 Accomplishments

1. East Zone 1 (EZ1) shoreline planting
 2. West Zone 1 (WZ1) shoreline planting
 3. East Zone 4 (EZ4) shoreline remediation and planting
 4. East Zone 5 (EZ5) shoreline remediation and planting
 5. West Zone 4 (WZ4) shoreline remediation and planting
 6. West Zone 5 (WZ5) shoreline remediation and planting
 7. Parcel 265 saltmarsh planting and temporary wave break installation
- 

New Bedford Harbor Overview, October 2021

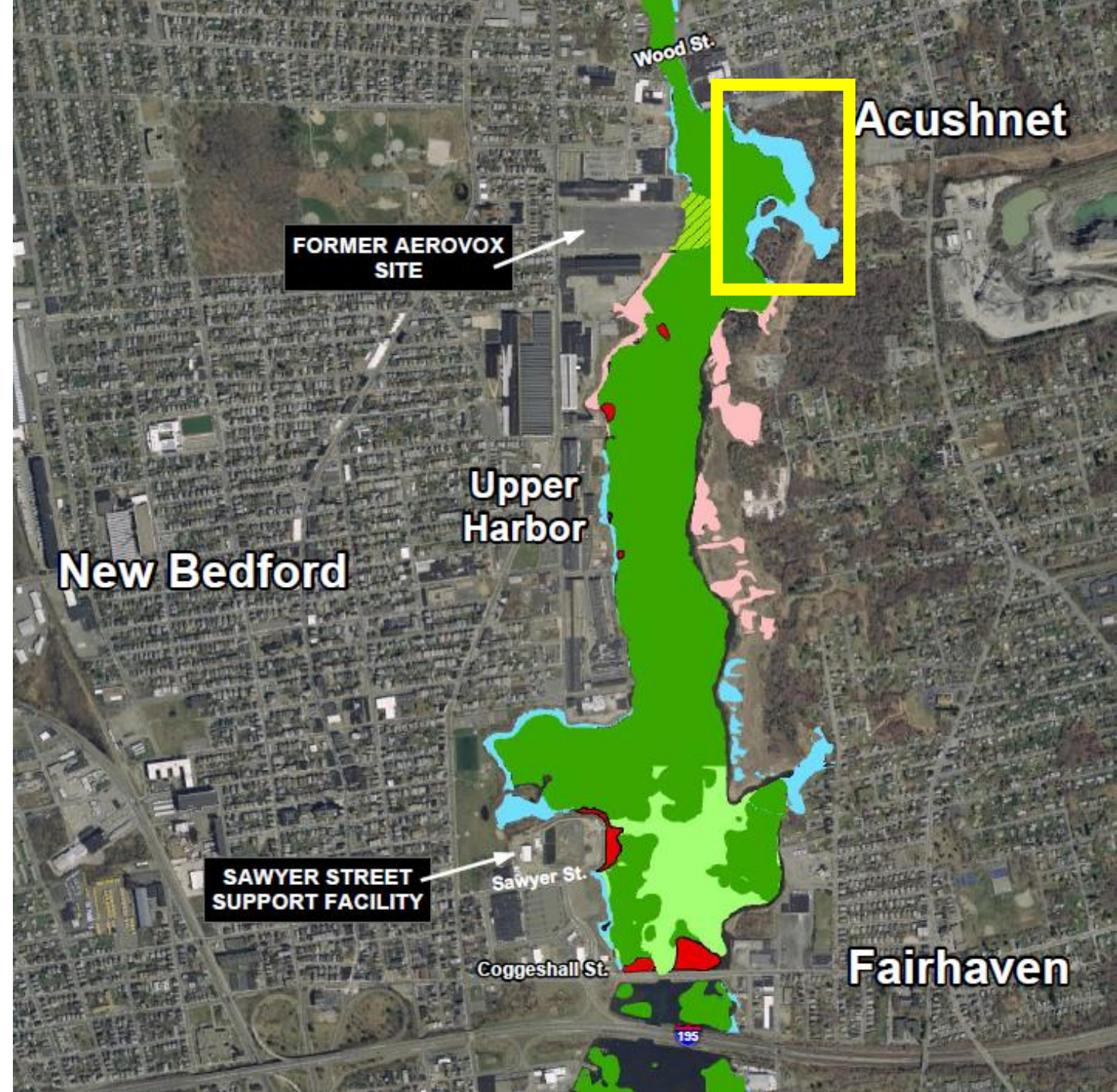
-  Completed Aerovox Interim Sediment Cap
-  Intertidal Remediation Completed
-  Intertidal Remediation to be Completed
-  Dredging Complete
-  No Remediation Required (Upper Harbor subtidal)
-  Upper Harbor sediment cover/cap areas

N



East Zone 1 (EZ1) Shoreline Planting

- 8.6-acre excavation area and abutting construction zones
- 3,300 shrubs and trees
- 34,000 salt marsh plants
- NE Conservation/Wildlife seed mix

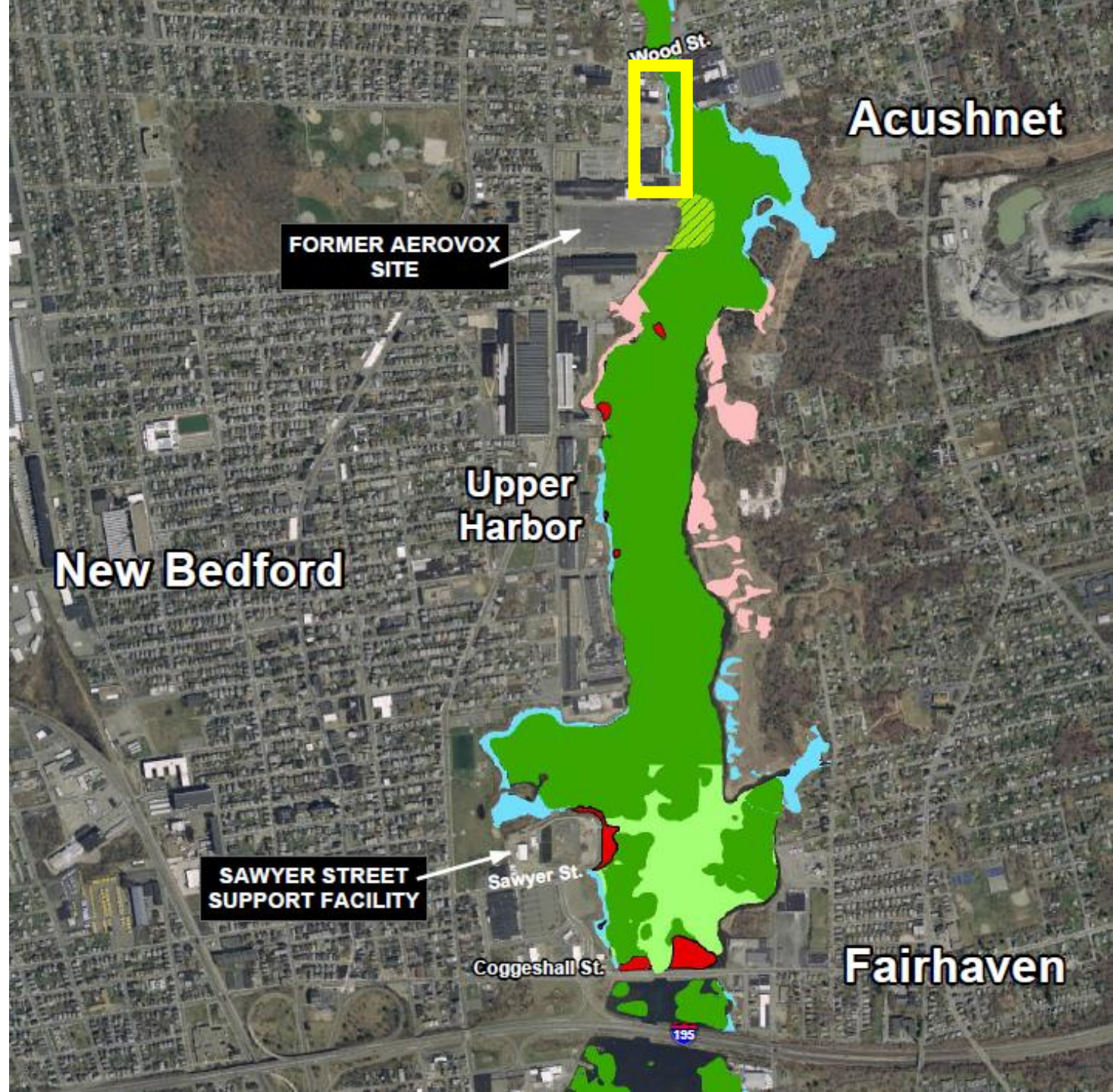






West Zone 1 (WZ1) Shoreline Planting

- 1-acre excavation area and abutting construction zones
- 500 shrubs and trees
- 7,200 salt marsh plants
- NE Conservation/Wildlife seed mix



West Zone 1 Planting Progress



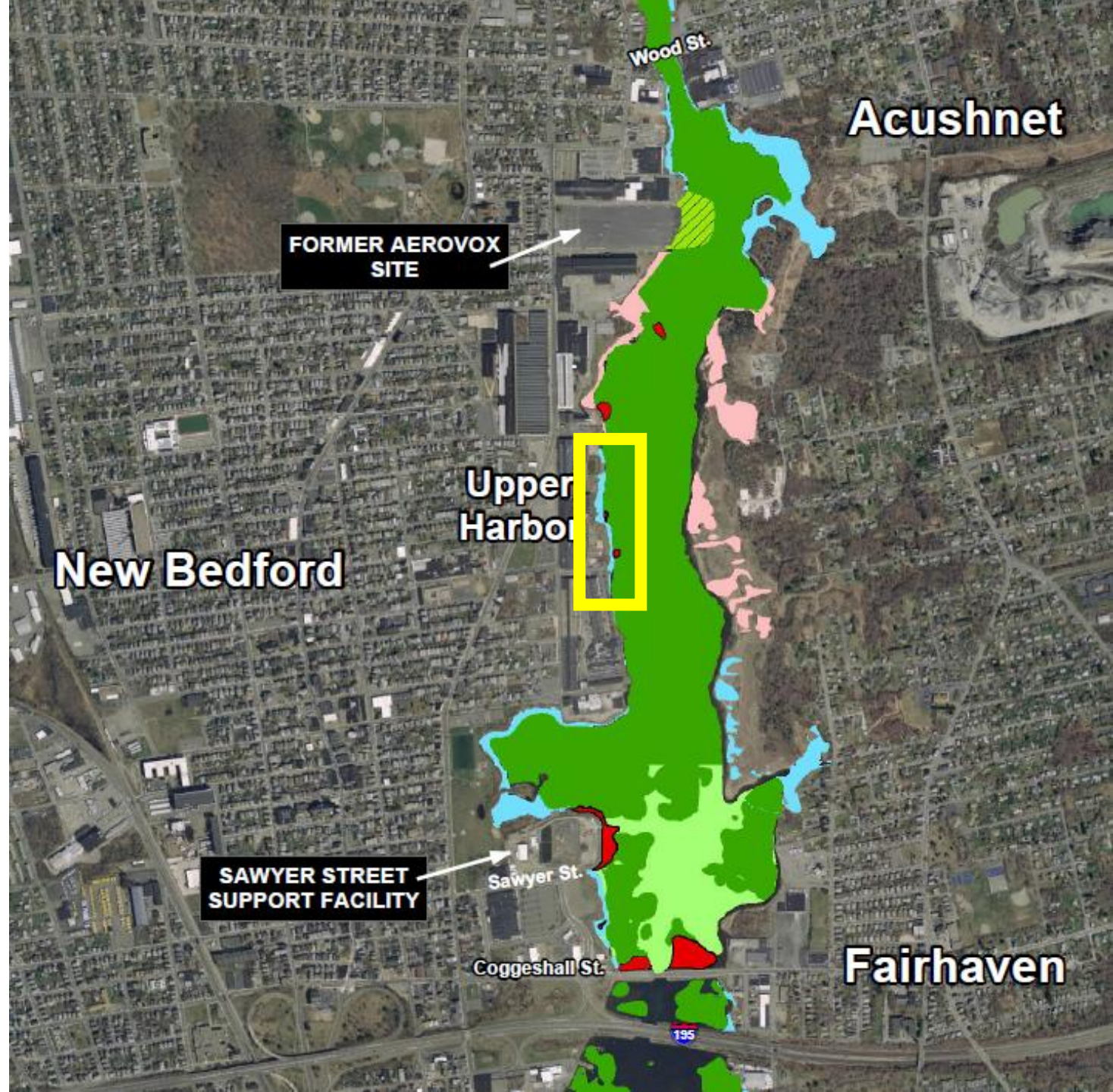
Spring 2021



Fall 2021

West Zone 4 (WZ4) Shoreline Remediation and Planting

- 1.1 acres (4,256 yd³) of contaminated sediment removed
- 1,500 shrubs and trees
- Salt marsh planting in Spring 2022



Excavation of contaminated sediment

Installation of coir logs prior to topsoil placement



West Zone 5 (WZ5) Shoreline Remediation

- 0.5 acres (1,110 yd³) of contaminated sediment removed
- 200 shrubs and trees
- Salt marsh planting in Spring 2022

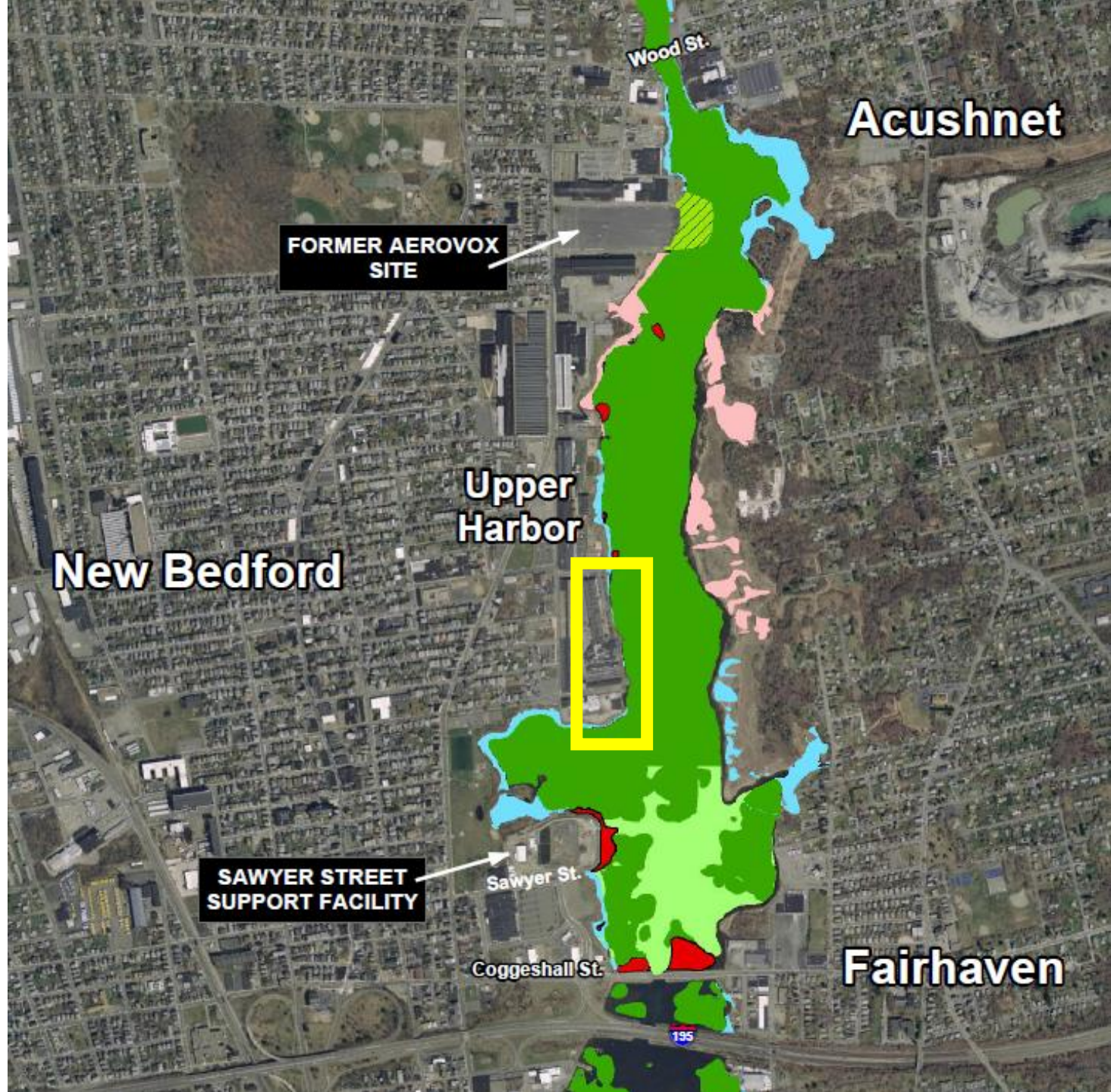
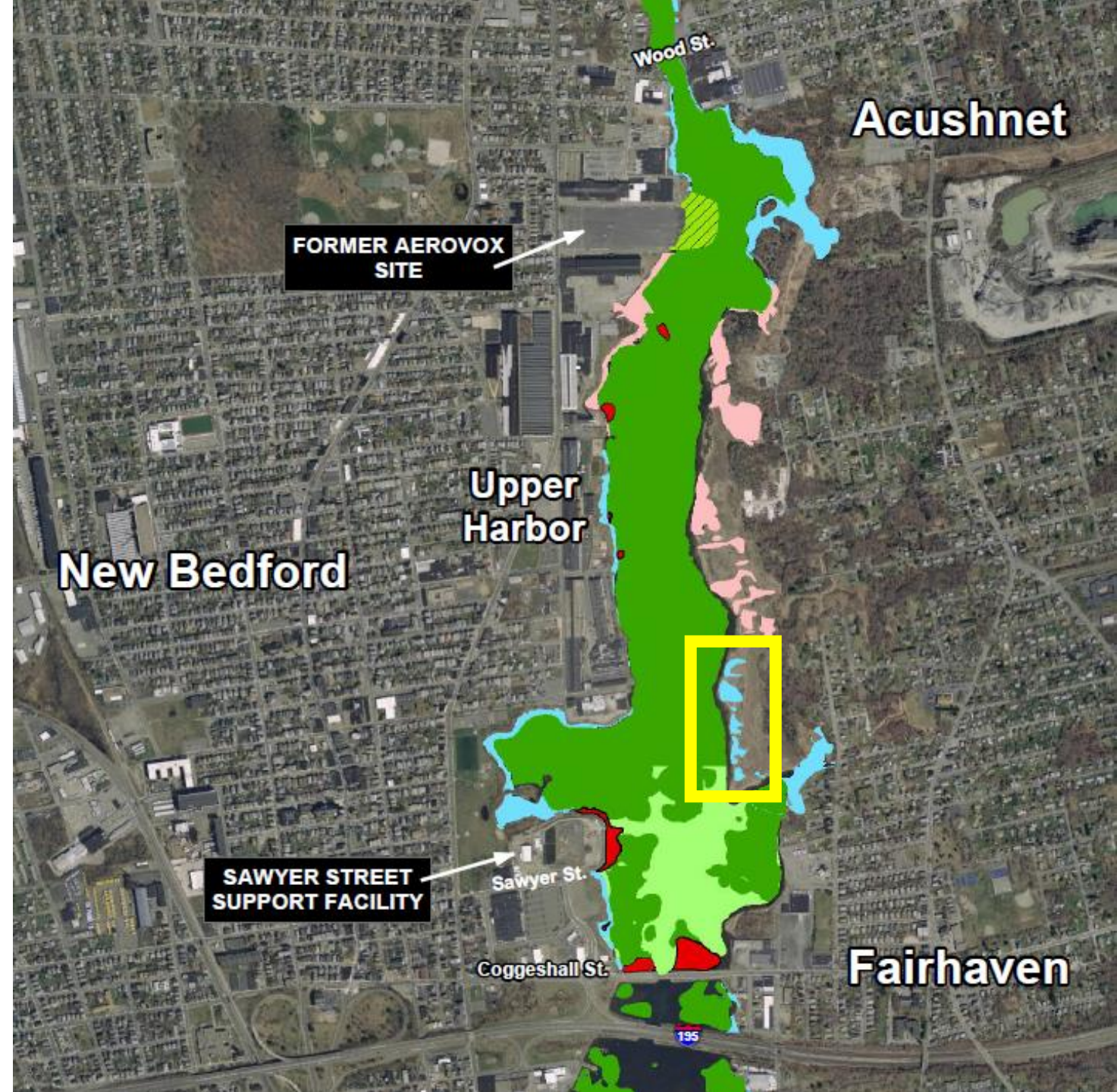




Photo credit: Edward Pepin

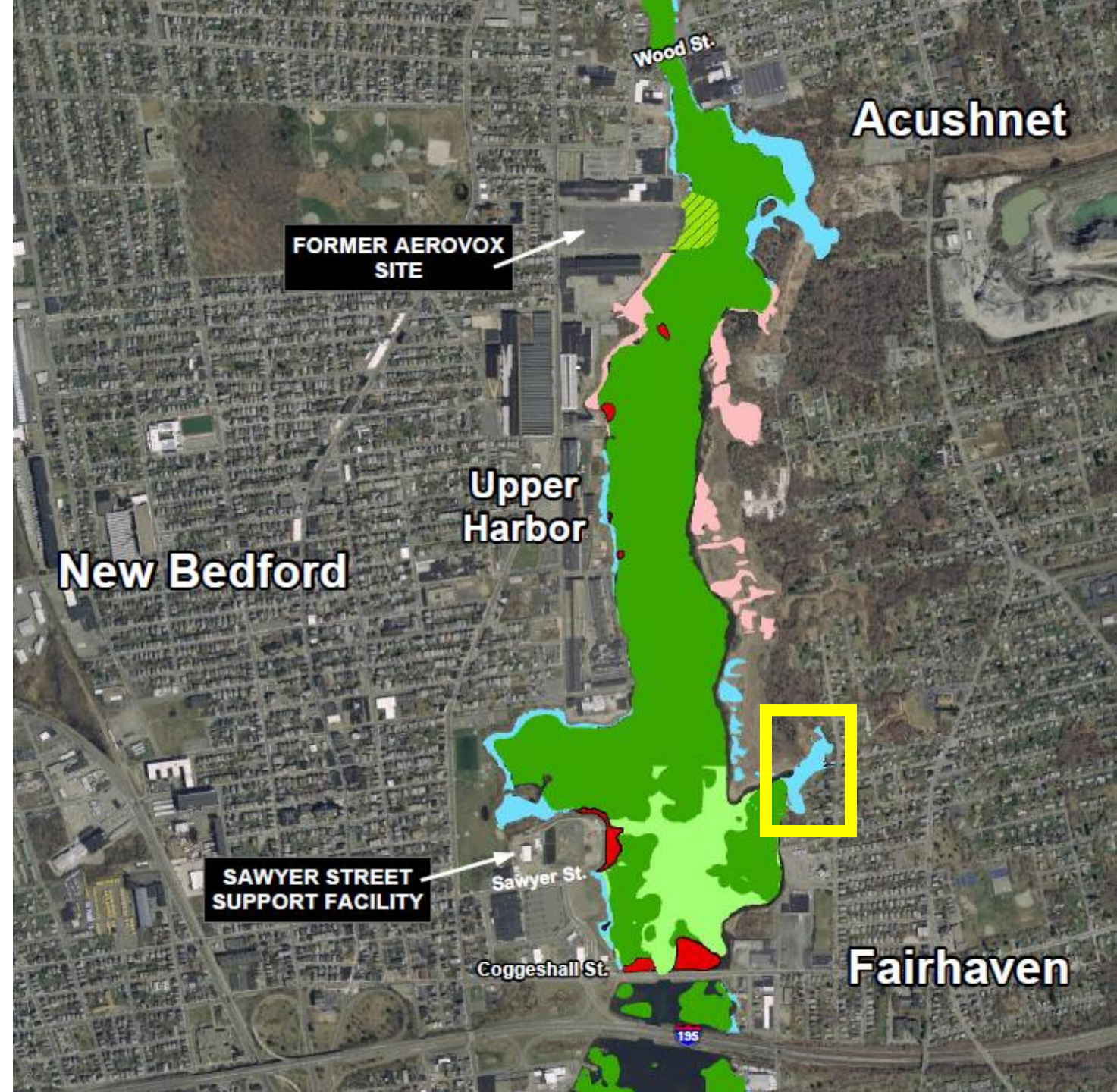
East Zone 4 (EZ4) Shoreline Remediation and Planting

- 2.1 acres (4,323 yd³) of contaminated sediment removed
- 1,850 shrubs and trees
- 100,000+ salt marsh plants (Spartina)



East Zone 5 (EZ5) Shoreline Remediation and Planting

- 2.7 acres (6,247 yd³) of contaminated sediment removed
- 550 shrubs and trees
- 40,600 salt marsh plants





Video of remedial work taken
by local resident, Ed Pepin



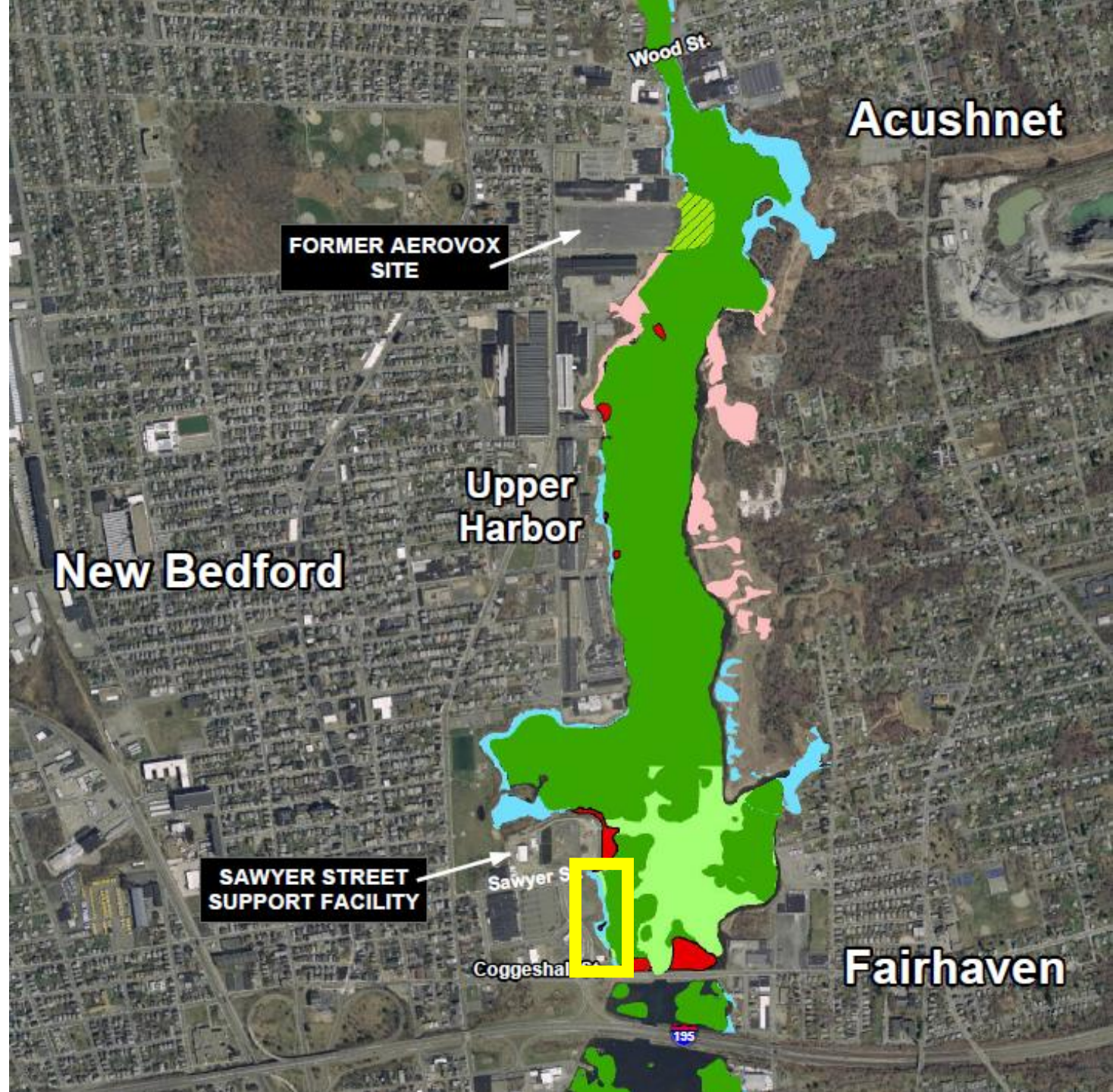


SALTMARSH PLANTINGS

Photo credit: Edward Pepin

Parcel 265 Shoreline Planting

- Approximately 11,000 salt marsh plants
- Installation of willow stakes on top of bank
- Herbivory fencing installation



Parcel 265 Restoration



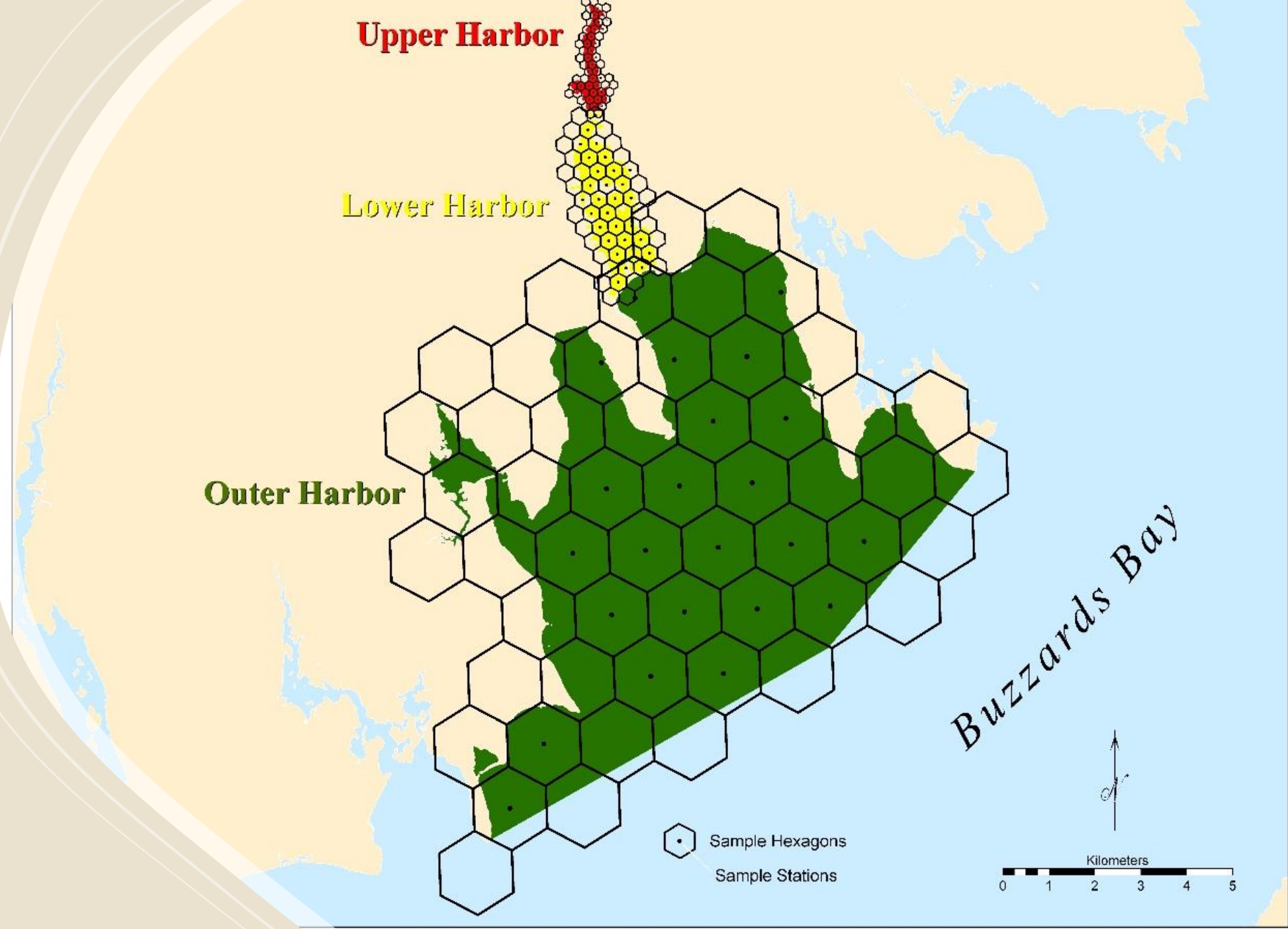
Pierce Mill
Cove / Coffin
Avenue Poison
Ivy Control

“Goatscaping”
conducted by
City of New
Bedford

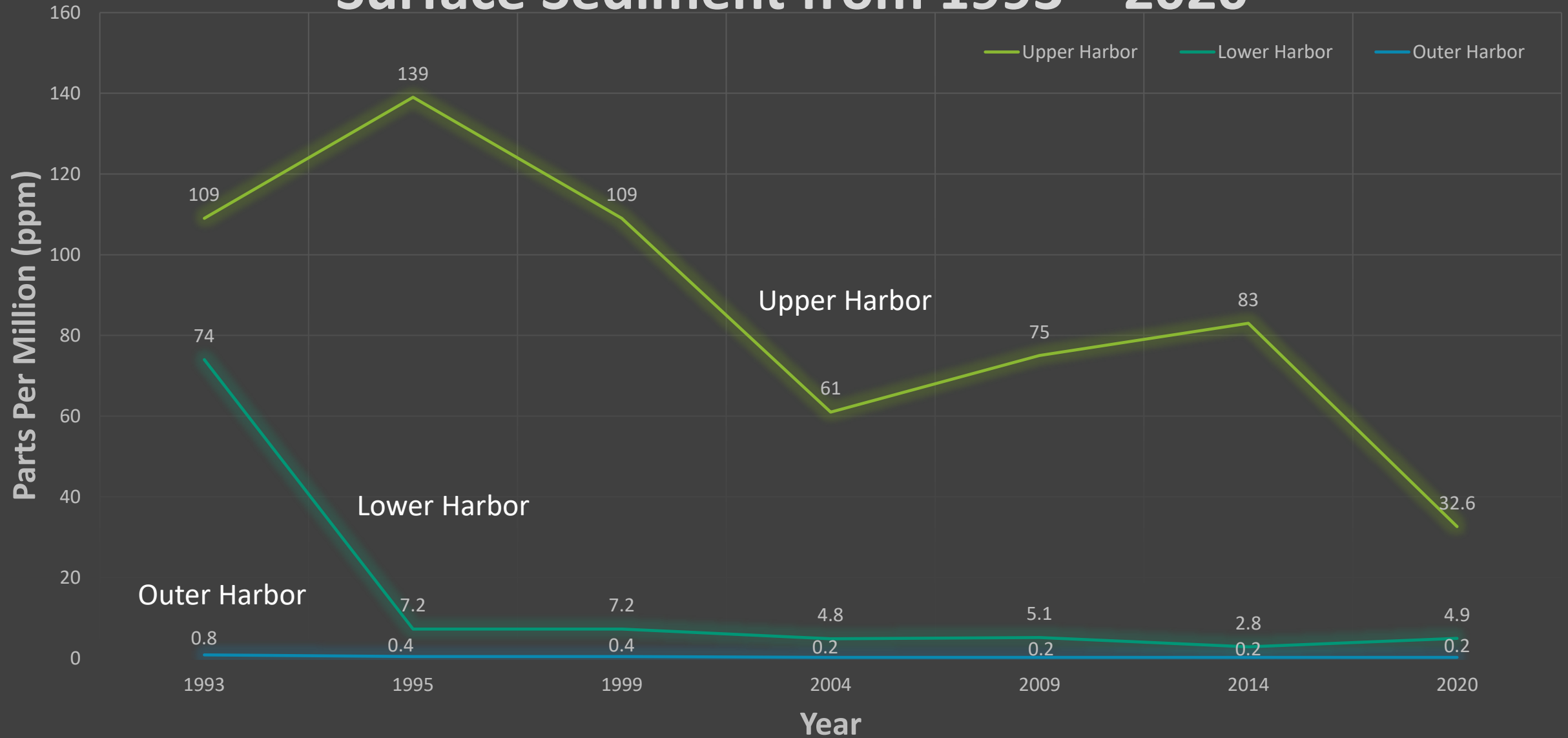


Long Term Monitoring Round VII

Completed October
2020



Long-Term Monitoring Average Total PCBs in Surface Sediment from 1993 – 2020*

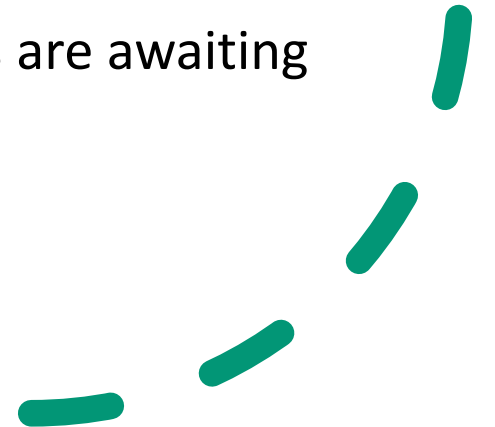


*top 1 inch of sediment only

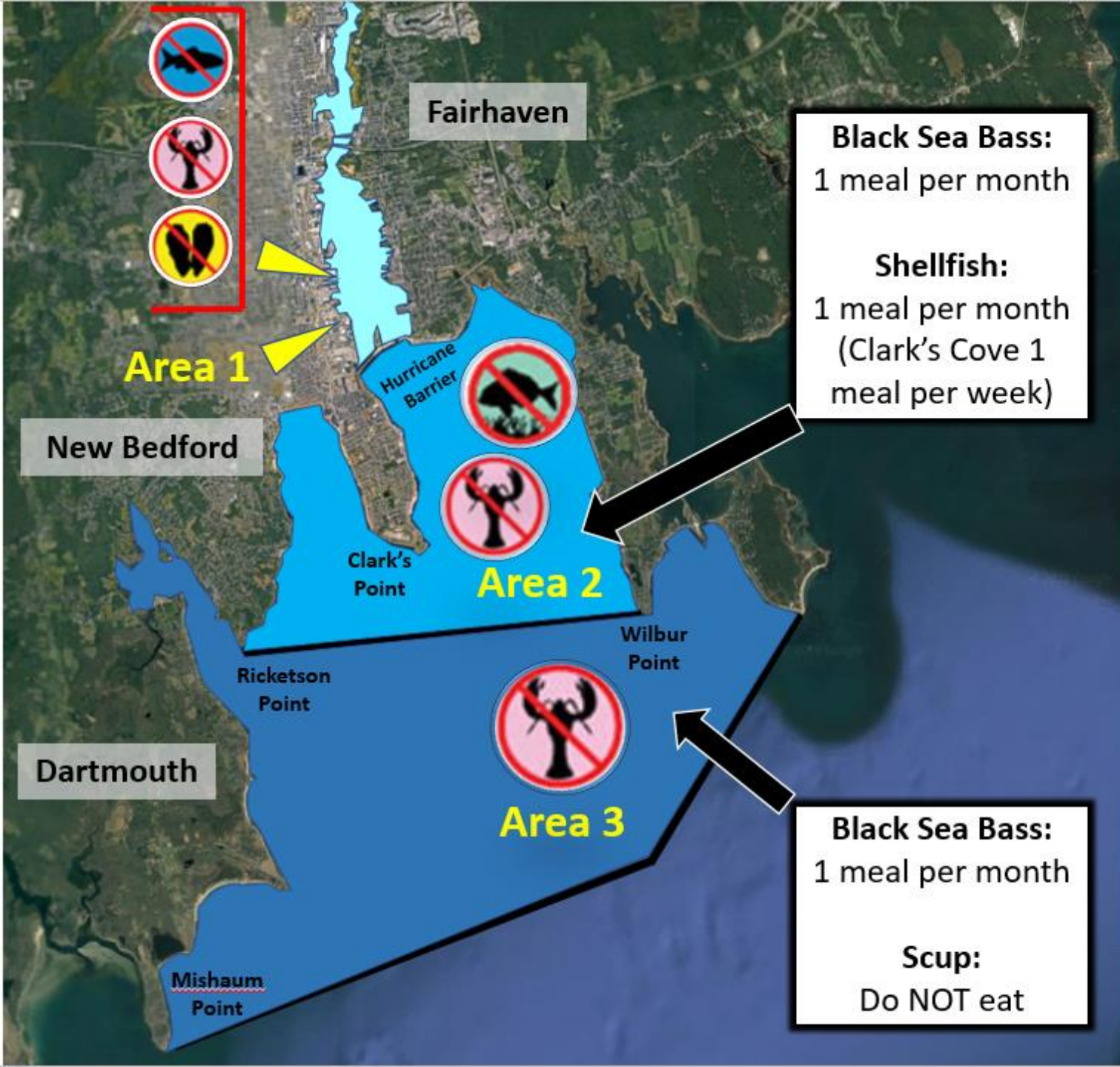
Summary of Upcoming 2022 Remedial Actions

1. Capping of the EPA Lower Harbor CAD Cell by the New Bedford Port Authority
2. West Zone 4 and 5 salt marsh plantings
3. Replanting of Pierce Mill Cove salt marsh
4. Monitoring and maintenance of remediated shorelines to date

Remaining upper harbor intertidal zones are awaiting additional funding



2010 EPA Recommendations for Recreational Fisherman/Shell fisherman per Superfund Risk Assessment



Black Sea Bass:
1 meal per month

Shellfish:
1 meal per month
(Clark's Cove 1 meal per week)

Black Sea Bass:
1 meal per month

Scup:
Do NOT eat

- 

Do NOT eat shellfish
No coma mariscos
Não coma mariscos
- 

Do NOT eat fish
No coma pescado
Não coma peixe
- 

Do NOT eat lobster
No coma langosta
Não coma lagosta
- 

Do NOT eat bottom feeding fish:
No coma pescado de fundo:
Não coma peixe de fundo:

• flounder	• tautog
• linguado	• tautoga
• solha	• bodião da ostra
• scup	• eel
• sargo	• anguila
• sargo	• anguila

Outreach Coordinator Update

- EPA and Community Economic Development Center (CEDC) work collaboratively to survey community members on fish consumption from harbor
- Surveys are asked to people who are fishing along harbor
- Have been surveying since 2015
- Bilingual/trilingual outreach
- Goal: to limit recreational seafood consumption from NBH in addition to gaining a better understanding of fishing community



Seafood Consumption Questionnaire

SEAFOOD CONSUMPTION QUESTIONNAIRE

DATE:
NAME:
LOCATION:

*This information is anonymous, none of the answers will be associated with your name or any family member/friends you may be fishing or eating fish with. Please answer ONLY based on fish caught and eaten from New Bedford Harbor.

QUESTION	NOTES
Do you fish in the Harbor?	<input type="checkbox"/> YES <input type="checkbox"/> NO
Where do you usually fish? (Use map as a guide)	
What type of fish do you typically catch? (Check all that apply)	<input type="checkbox"/> Black Sea Bass <input type="checkbox"/> Flounder <input type="checkbox"/> Scup <input type="checkbox"/> Tautog <input type="checkbox"/> Eel <input type="checkbox"/> Lobster <input type="checkbox"/> Shellfish <input type="checkbox"/> Other:
Are you eating the fish you catch from the harbor?	
Does anyone else eat the fish that you catch from the harbor? If yes, who? (friends/family?)	

QUESTION	NOTES
If you do eat seafood and/or shellfish from the harbor, how often would you estimate you eat it as a meal?	<input type="checkbox"/> 1x a Week <input type="checkbox"/> 2 x a week <input type="checkbox"/> 1 x a month <input type="checkbox"/> 2 times a month <input type="checkbox"/> Every couple of months <input type="checkbox"/> A few times a year
How many months a year do you normally fish? Only during the summer months, or year round?	
If you catch a lot of fish, do you freeze it and eat it year round?	
Do you have any concerns about the potential health effects of consuming seafood from the harbor? Why or why not?	
Any additional notes from interview?	

Updating Community Involvement Plan (CIP)

- Site specific strategy to enable meaningful community involvement throughout the Superfund cleanup process.
- Specify planned community involvement activities to address community needs, concerns, and expectations
 - Identified through community interviews and other means.
- The CIP is a “living” document and is revised as site conditions change.
- We will be conducting interviews and looking for feedback
 - Interested? [Email Charlotte Gray- gray.charlotte@epa.gov](mailto:gray.charlotte@epa.gov)

Questions and Comments

For additional
information,
please visit
www.epa.gov/nbh

