



New Bedford Harbor Superfund Site Virtual Public Meeting

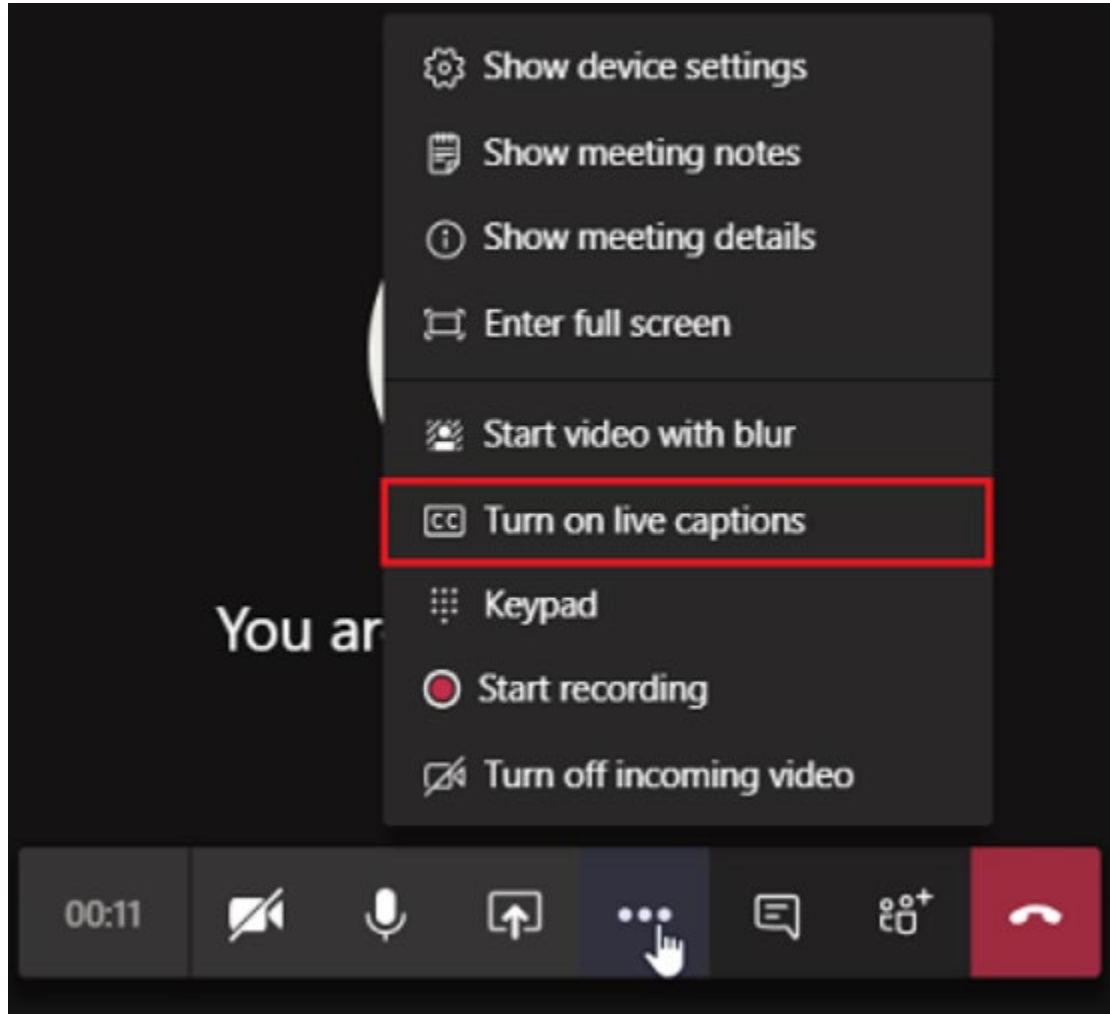
January 13th, 2021

6:00PM – 7:30PM



EPA Remedial Project Managers
Dave Dickerson and Natalie McClaine

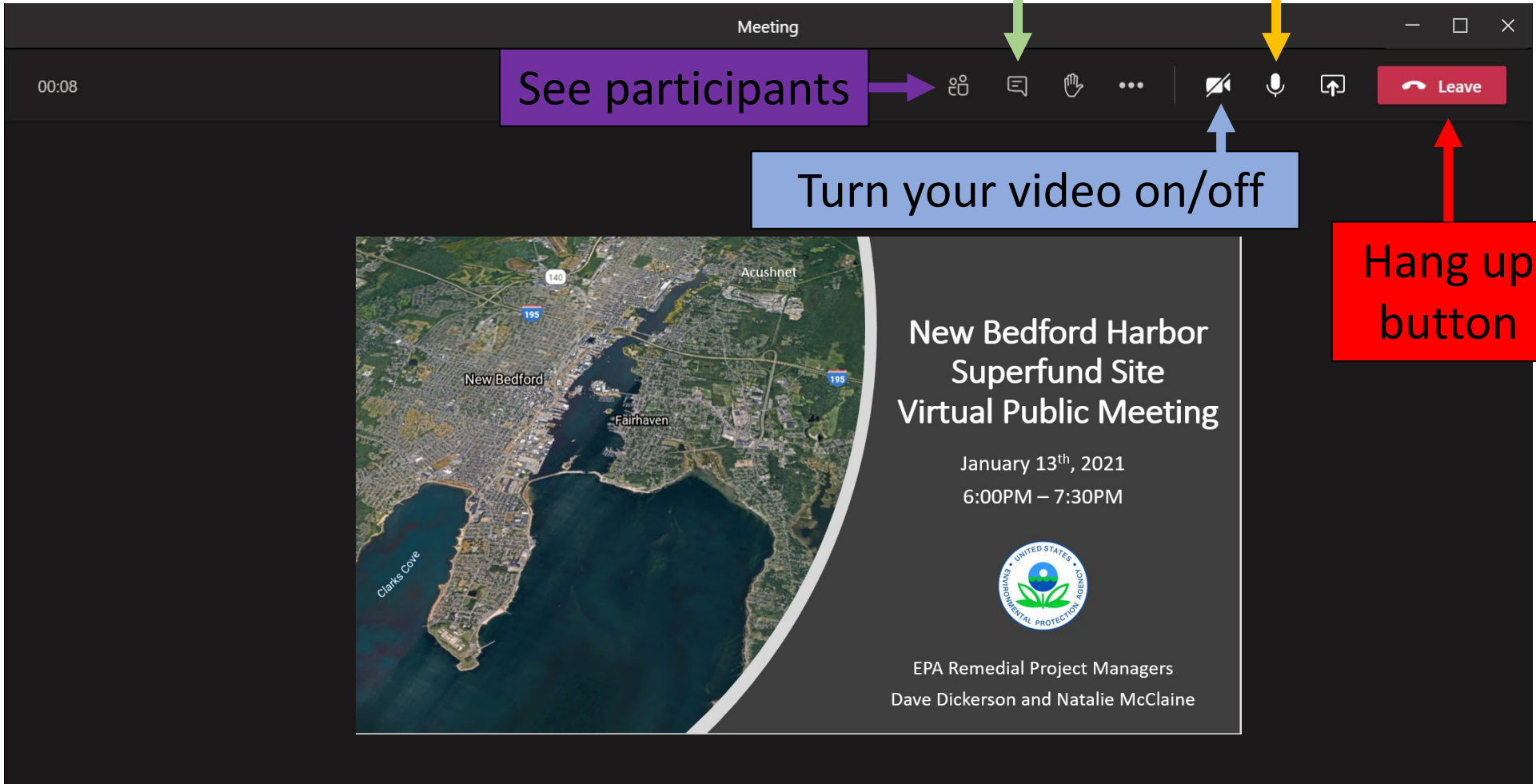
Closed Captioning



1. Once joined or in the group call, click on the 3 *ellipses* (More actions)
2. Click on *Turn on live captions (preview)*
3. The closed captions will appear on the bottom left-hand side of the screen

Ask questions / share comment

MUTE your PC mic button



See participants

Turn your video on/off

Hang up button

Virtual Meeting Participant Instructions

Agenda



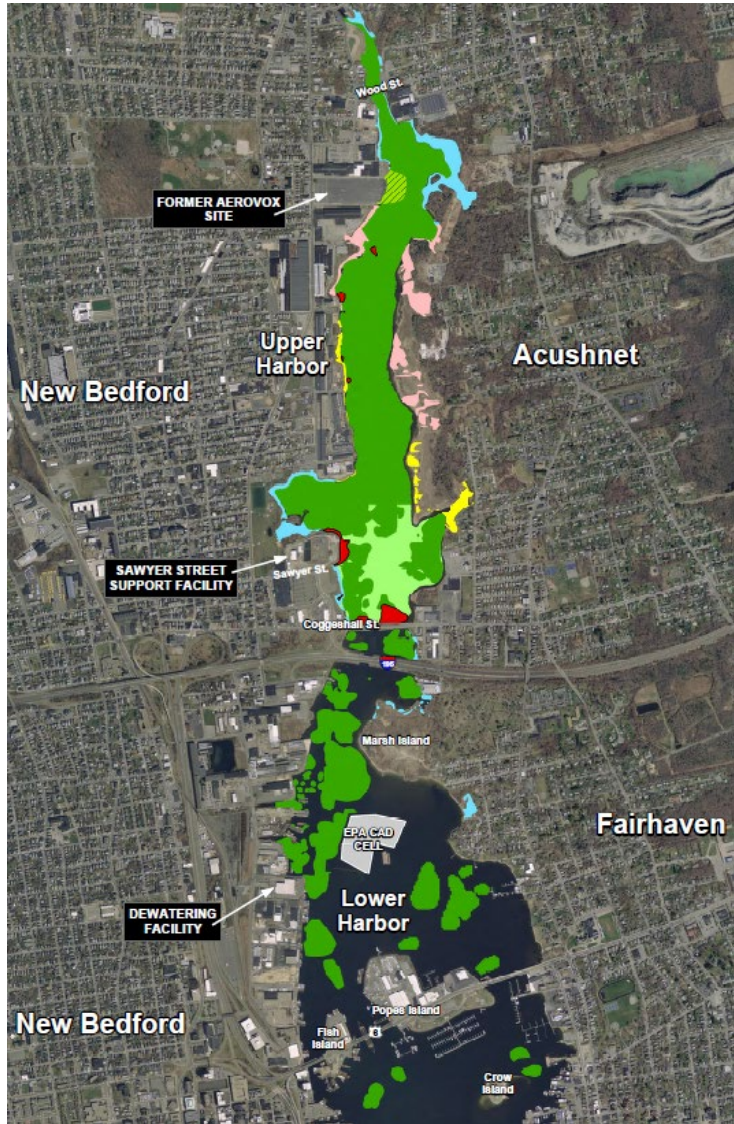
REVIEW OF 2020
ACCOMPLISHMENTS



SUMMARY OF UPCOMING
2021 REMEDIAL ACTIONS

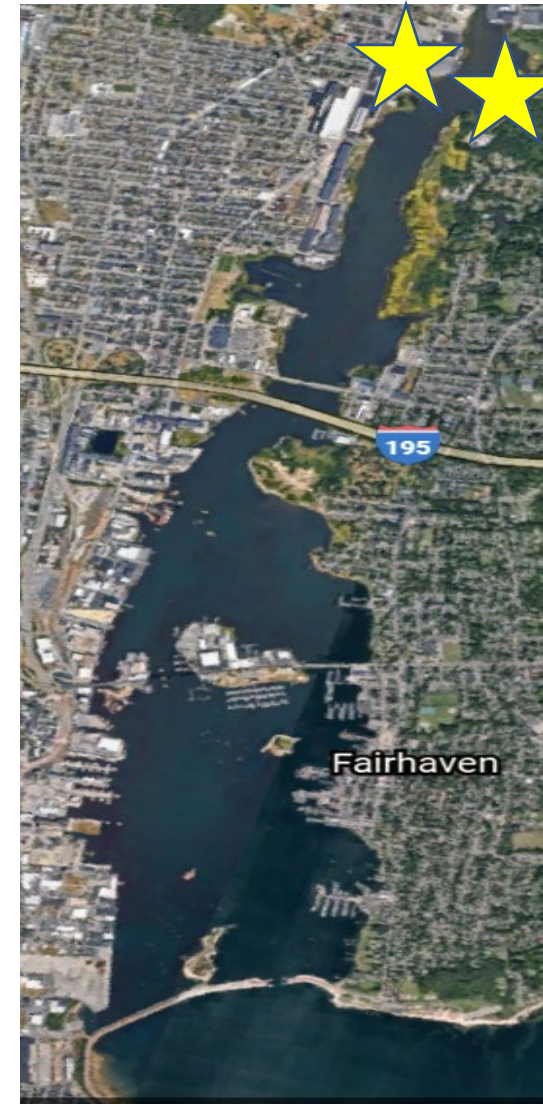
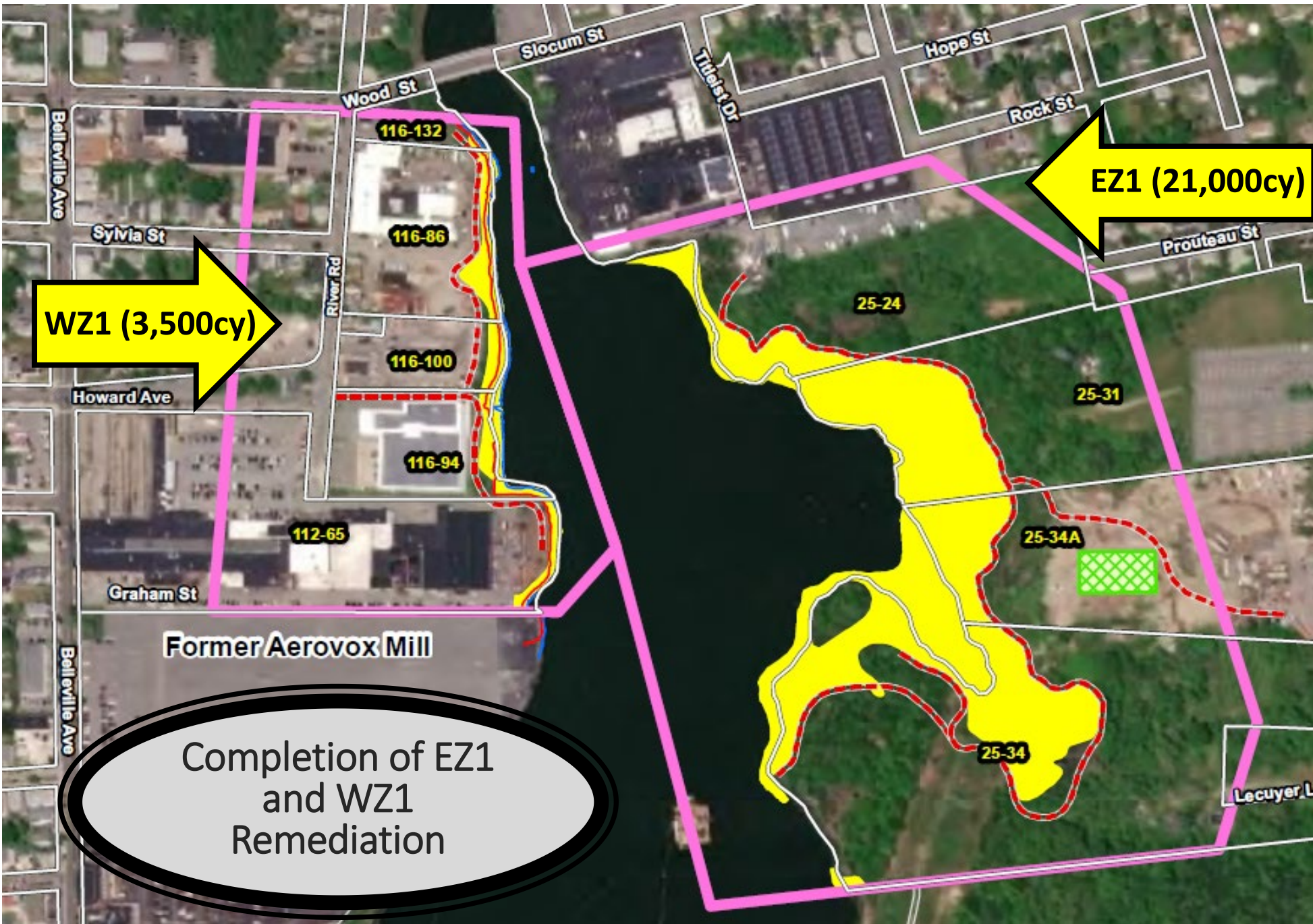
Review of 2020 Accomplishments

1. Completion of **ALL** subtidal dredging
2. Completion of East Zone 1 (EZ1) shoreline remediation
3. Completion of West Zone 1 (WZ1) shoreline remediation
4. Completion of seven upper harbor sediment caps
5. Decontamination and transfer of the rail-accessible Dewatering Facility on Hervey Tichon Avenue to the City of New Bedford
6. Demolition of Sawyer Street desanding facilities
7. Completion of site-wide (18,000 acres) Long-Term Monitoring (Round 7)
8. Constructed and redesigned Parcel 265 shoreline



Completion of all Subtidal Dredging in March 2020

(Dark Green Areas)





EZ1
Excavation in
Progress,
Looking South
– April 2020



EZ1 - Saltmarsh
Restoration
(excavation and
backfill
completed)

EZ1 -
Saltmarsh
Restoration
Taking Shape





Areas for additional
Spartina planting in
spring 2021

Restoration of Access Roads

Before and After Soil PCB Levels (EZ1 - ppm)

	<u>Before Excavation</u>	<u>After Excavation, <i>Prior to Backfill</i></u>	<u>After Excavation, <i>After Backfill</i></u>
Top foot average	1,427	1.8	0.01 (ND)
Top foot maximum	21,000	8	0.01 (ND)

WZ1 Excavation in Progress – November 2020



WZ1 Restoration (backfilling) in Progress - December 2020





Upper Harbor Sediment Caps (shown in red)



**Two Layers for
Upper Harbor
Sediment Caps**

Acushnet River

12 – 20” Armor Stone

(scour protection and PCB-free habitat layer)

24” Silty Sand

(1.5% organic carbon for PCB isolation)

Existing river sediment

Decontamination
and transfer of the
rail-accessible
Dewatering Facility
on Hervey Tichon
Ave to the City of
New Bedford





Deconstruction of the Desanding Facility, Support Facilities, and U.S. Army Corps Office

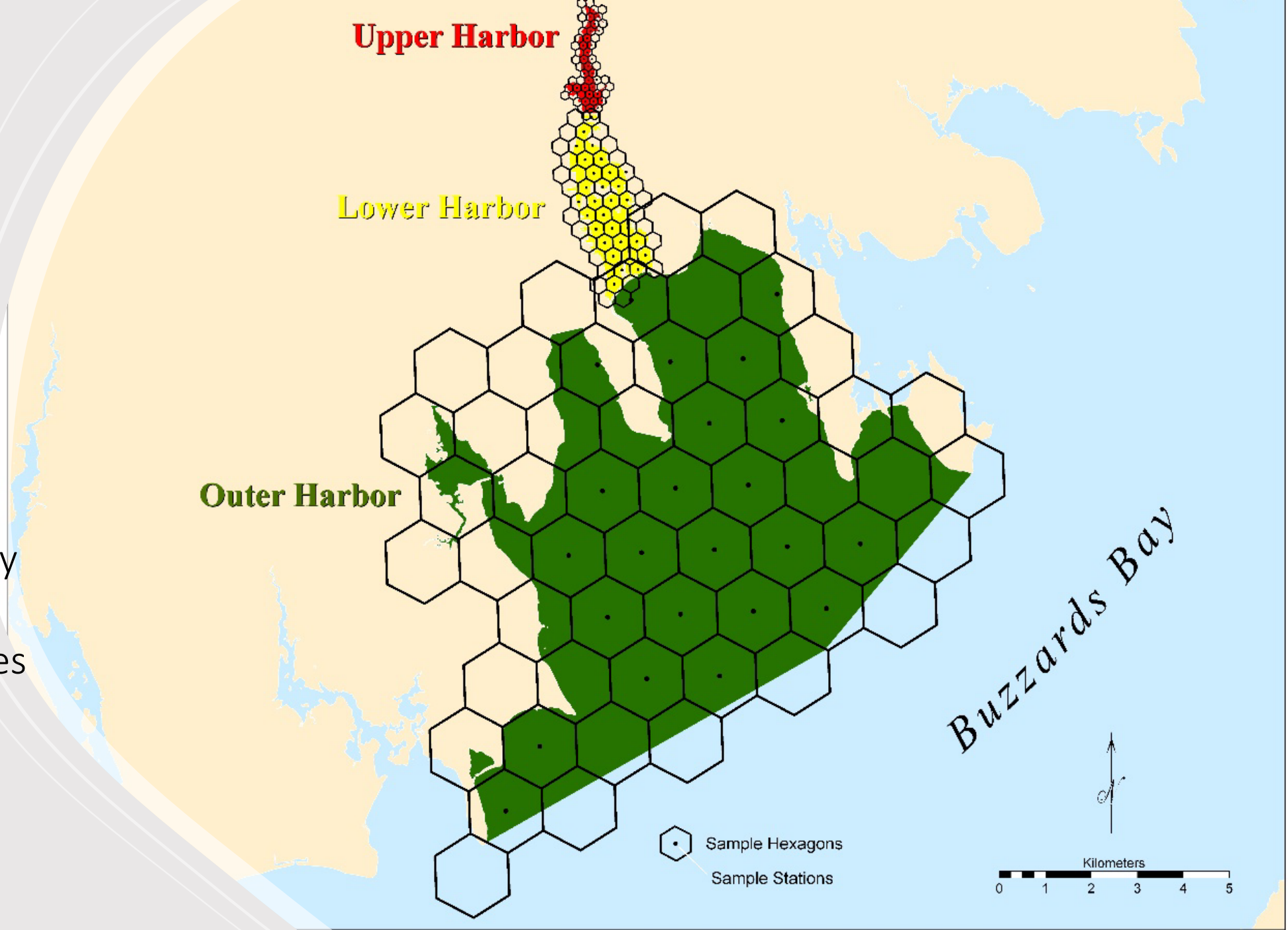


Deconstruction and Transfer of the Sawyer Street Desanding Facility to the City of New Bedford
September 2020

Long Term Monitoring

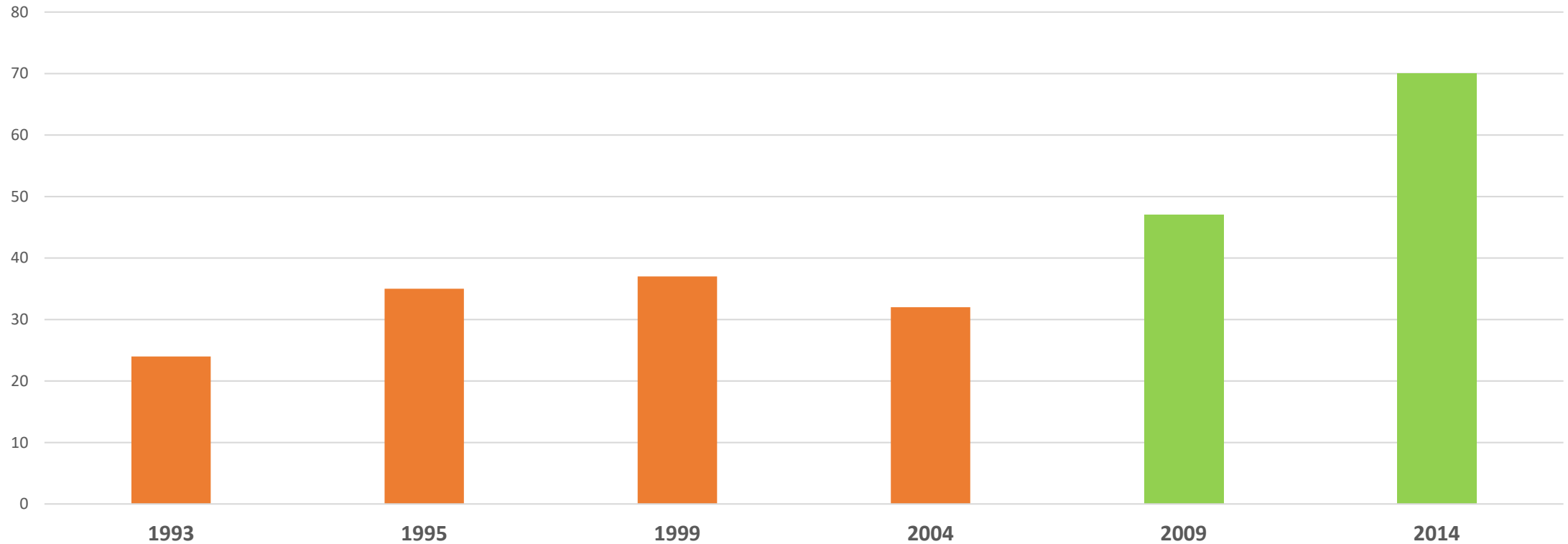
Completed October 2020

- 18,000 acres
- Sediment chemistry
- Sediment properties
- Benthic organism counts




Improvements in Benthic Community Surveys 1993 – 2014

Percent of Stations with Positive Benthic Index in Lower Harbor, USEPA Long-Term Monitoring Program for NBH

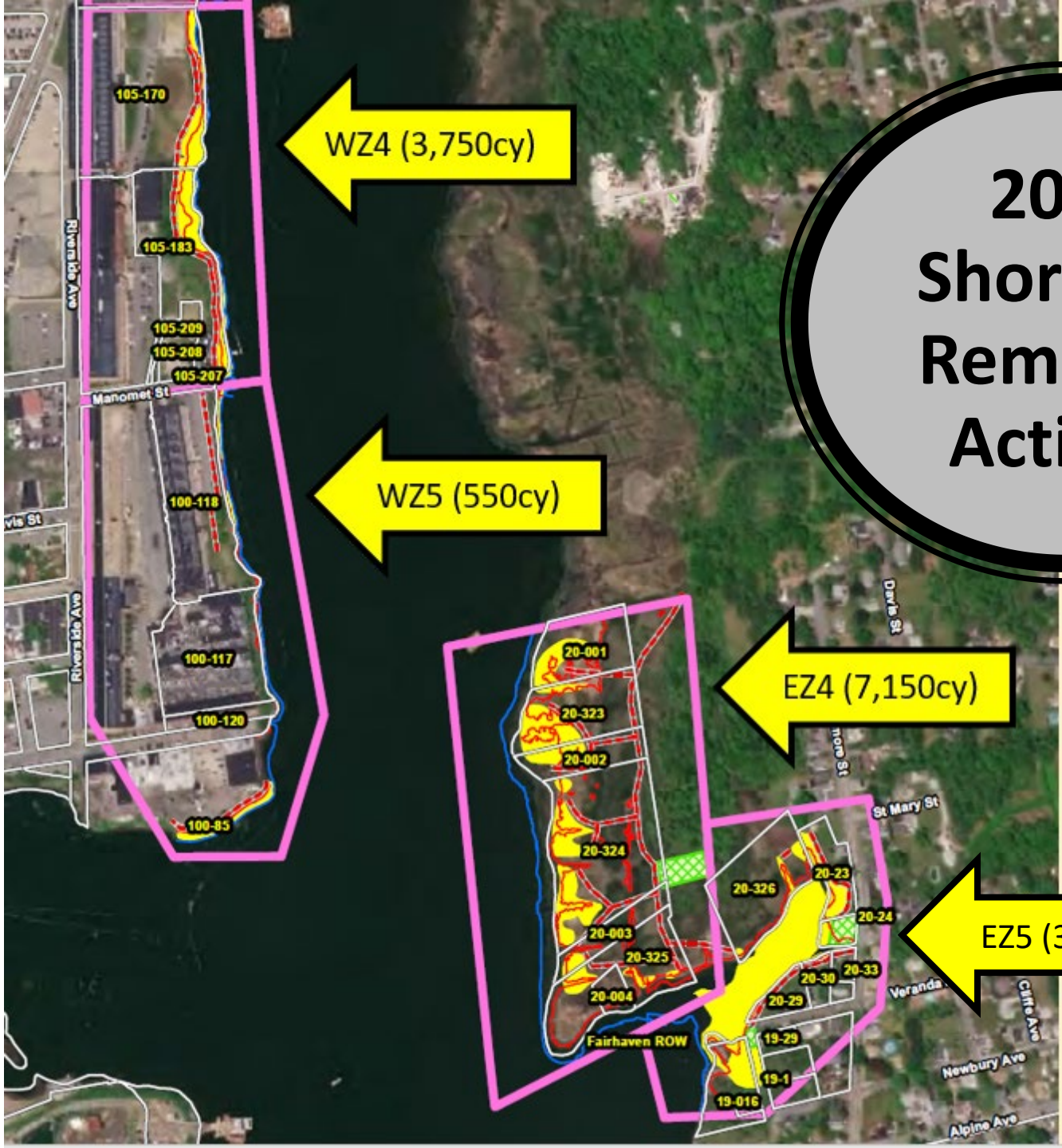


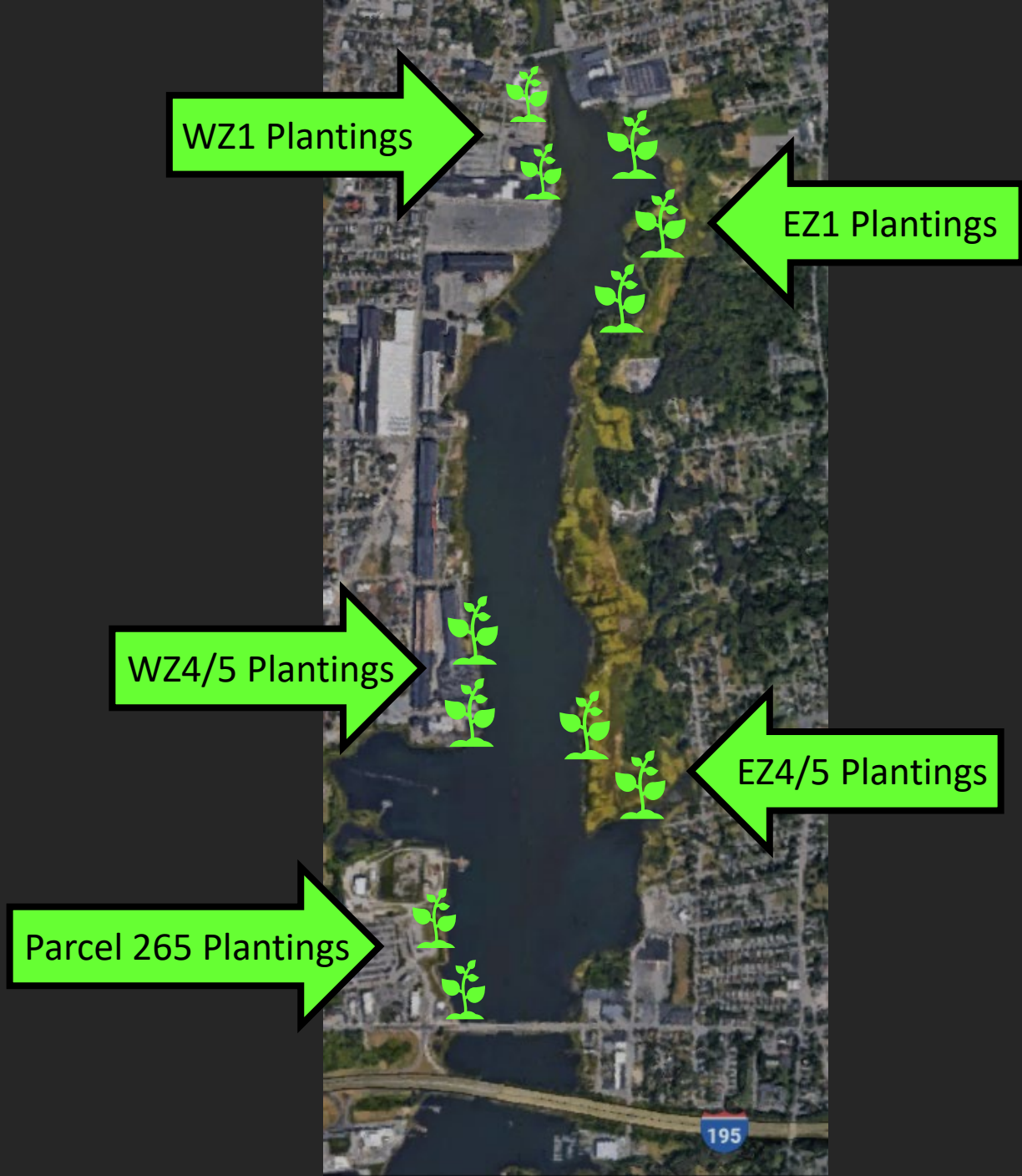


Summary of Upcoming 2021 Remedial Actions

1. East Zone 4 (EZ4) and East Zone 5 (EZ5) shoreline remediation and restoration
 2. West Zone 4 (WZ4) and West Zone 5 (WZ5) shoreline remediation and restoration
 3. Saltmarsh plantings at Parcel 265, EZ1 and WZ1
- 

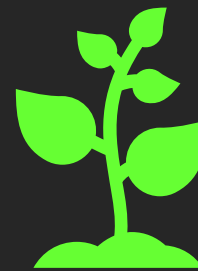
2021 Shoreline Remedial Actions





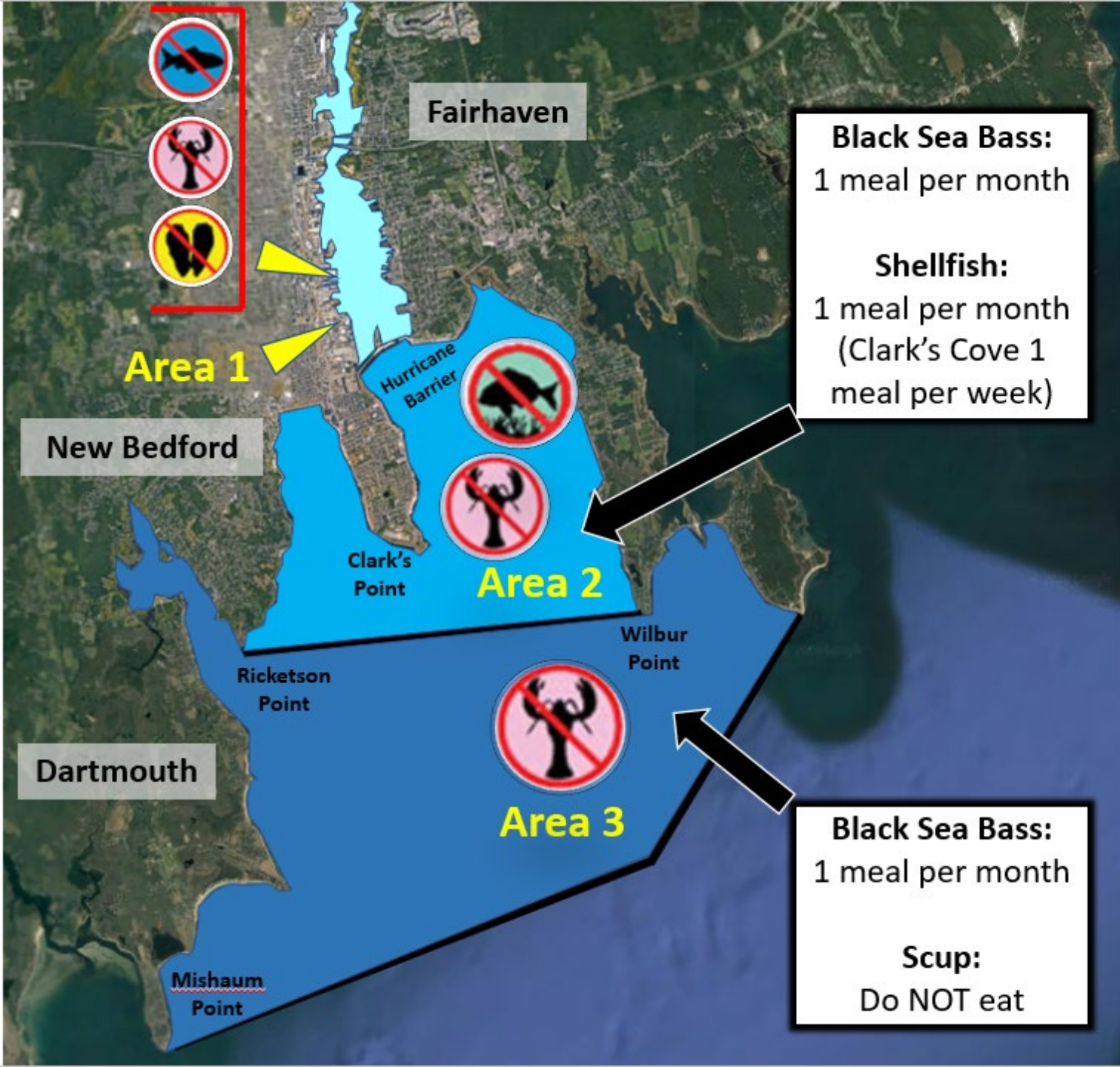
2021 Shoreline Saltmarsh Plantings

- Parcel 265
- EZ1
- WZ1
- WZ4 & 5
- EZ4 & 5



= Saltmarsh planting area

2010 EPA Recommendations for Recreational Fisherman/Shell fisherman per Superfund Risk Assessment



- 
Do NOT eat shellfish
 No coma mariscos
 Não coma mariscos
- 
Do NOT eat fish
 No coma pescado
 Não coma peixe
- 
Do NOT eat lobster
 No coma langosta
 Não coma lagosta
- 
Do NOT eat bottom feeding fish:
 No coma pescado de fundo:
 Não coma peixe de fundo:

• flounder	• tautog
• linguado	• lautoga
• solha	• bodião da ostra
• scup	• eel
• sargo	• anguila
• sargo	• anguila

Questions or Comments

