

SITCUM WATERWAY REMEDIATION PROJECT

CLEAR CREEK HABITAT IMPROVEMENT PROJECT MONITORING REPORT, 2008

PREPARED FOR:

PORT OF TACOMA
P.O. Box 1837
TACOMA, WASHINGTON 98401

PREPARED BY:

GRETTE ASSOCIATES^{LLC}

2102 NORTH 30TH STREET, SUITE A
TACOMA, WASHINGTON 98403
(253) 573-9300

151 SOUTH WORTHEN STREET, SUITE 101
WENATCHEE, WASHINGTON 98801
(509) 663-6300

JANUARY 2009



TABLE OF CONTENTS

1. INTRODUCTION.....	1
2. PROJECT MONITORING	1
2.1. WATER LEVEL MONITORING	1
2.1.1. Tidal-Induced Fluctuation.....	1
2.2. PHOTO POINTS.....	3
3. DISCUSSION	5
4. REFERENCES	6
APPENDIX A.....	7

LIST OF FIGURES

Figure 1. Tidally Induced Water Level (ft; NGVD) for the Clear Creek Habitat Improvement Project Site Pond/Wetland Complex during May 2008.....	2
Figure 2. Clear Creek Habitat Improvement Project site map indicating location of photo point transects during May and November 2008.	4

1. INTRODUCTION

This report presents the results from the 2008 monitoring activities at the Clear Creek Habitat Improvement Project site. The results contained herein represent the final scheduled monitoring activities for the Clear Creek Habitat Improvement Project site.

The Clear Creek Habitat Improvement Project site was constructed as one of the habitat components of the mitigation package for the Sitcum Waterway Remediation Project, pursuant to CERCLA. The schedule of post-construction environmental monitoring activities at the Clear Creek Habitat Improvement Project is presented in the Operations, Maintenance, and Monitoring Plan (OMMP) (Port of Tacoma 1995). Comparisons of the results of the monitoring activities to the performance standards established in the OMMP can be found in the Year 1, 3 and 5 Monitoring Reports (Grette Associates 2000, 2002, 2004).

Based on the OMMP, additional physical monitoring (water level monitoring and photo points) was scheduled to occur in year 10 (2008). There are no performance standards associated with the year 10 monitoring.

2. PROJECT MONITORING

Year 10 monitoring focused on two activities, water level monitoring and photo points. The functional objectives for the monitoring program are listed in Table 2 of the OMMP. Monitoring activities to address the functional objectives are listed in Table 3 of the OMMP.

2.1. WATER LEVEL MONITORING

The OMMP states “the results of water level monitoring...[will] be compared to the 5.5 ft (NGVD) water level” and that “this is not a performance standard, but provides a check of general project conditions during the term of the monitoring program.

The following summarizes the water level monitoring methods and results for Year 10.

2.1.1. Tidal-Induced Fluctuation

Water level monitoring was conducted in May 2008. Water level was recorded continuously within the Clear Creek Habitat pond/wetland complex using a Global Water WL-15 water level logger. In order to calibrate the reading to NGVD datum, a correction factor was added to logger depth data. This correction factor was obtained by measuring the water level within the pond/wetland complex at the beginning and end of each monitoring session. Water level was measured at the upper weir, which was surveyed during year 0 (“as-built”) and provides a known elevation.

The results from May 2008 show that regular tidal-induced water level fluctuations occurred during Year 10 monitoring of the pond/wetland complex (Figure 1). The steep leading edge of each tidal curve shows that tidal flooding was unrestricted. The extended trailing edge of each tidal curve demonstrates the weirs’ effectiveness at controlling water retention within the pond/wetland complex.

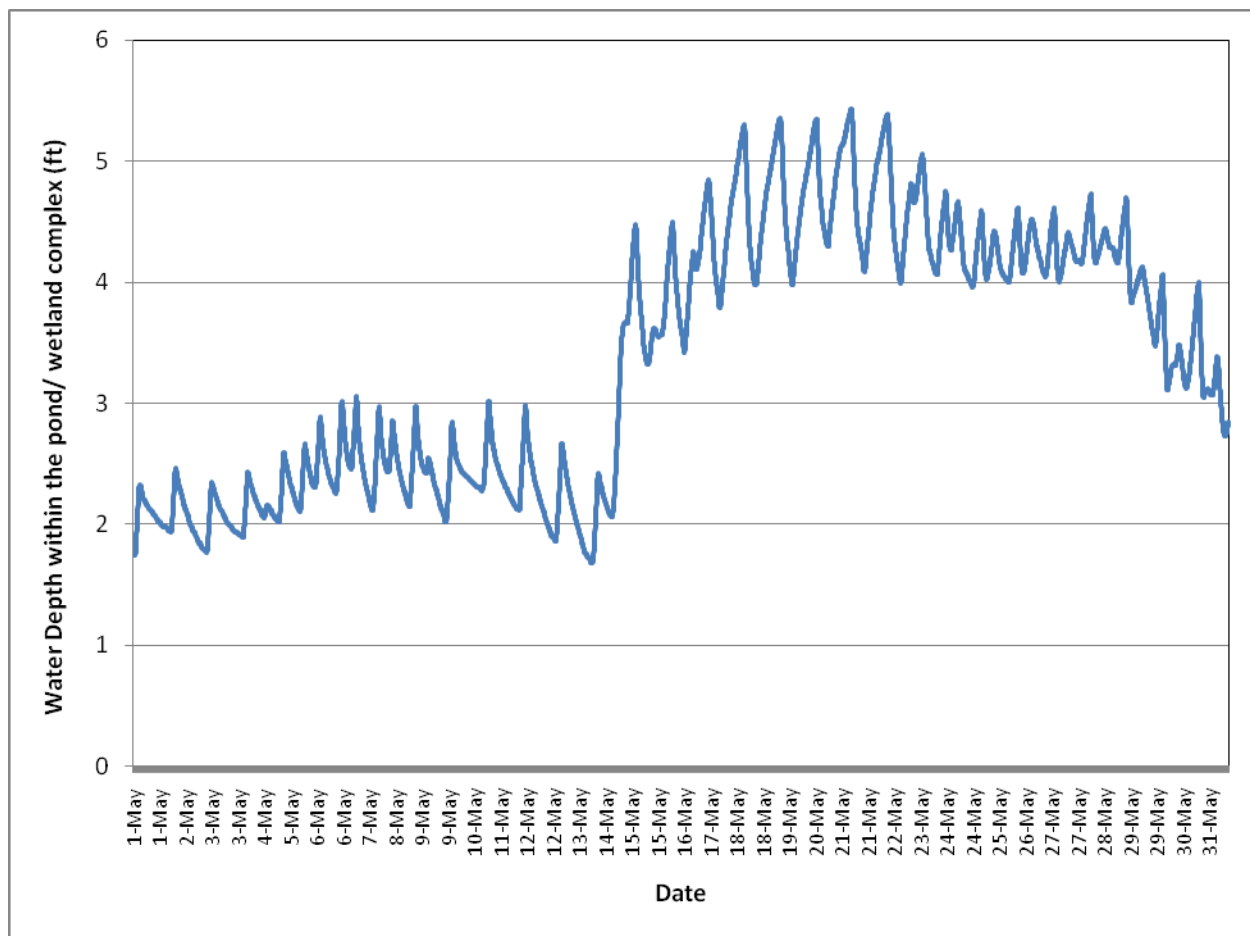


Figure 1. Tidally Induced Water Level (ft; NGVD) for the Clear Creek Habitat Improvement Project Site Pond/Wetland Complex during May 2008.

2.2. PHOTO POINTS

Section 5.5 of the OMMP describes the photo point monitoring requirements. The OMMP does not establish a performance standard for photo points. Pursuant to the OMMP, photographic documentation of the habitat area requires the establishment of set photo points around the project area. Photo points were established at one or more ends of each vegetation sampling transect. Additional locations were chosen based on their relative value for documenting the habitat area.

Figure 2 shows the location of each photo point relative to the eight transects. Each photo point was surveyed and marked with a permanent stake so that future photographs can document the same location. Time, date, photo point location, and photographer were all recorded in a photo journal. Photographs were taken in September and repeated in November 2008 to document the summer and winter conditions. Unless otherwise noted, photographs were taken at an elevation of 3 feet (NGVD) as listed in the OMMP. At many of the photo points, vegetation obstructed the view of the habitat. In response to this, additional photo points were added along each transect at the water's edge or at alternative elevations (i.e. 10 ft NGVD rather than 3 ft NGVD), duplicating the photo direction specified in the OMMP.

Results from year 10 photographs are shown in Appendix A. The photos clearly document the continued establishment of vegetation within the site.

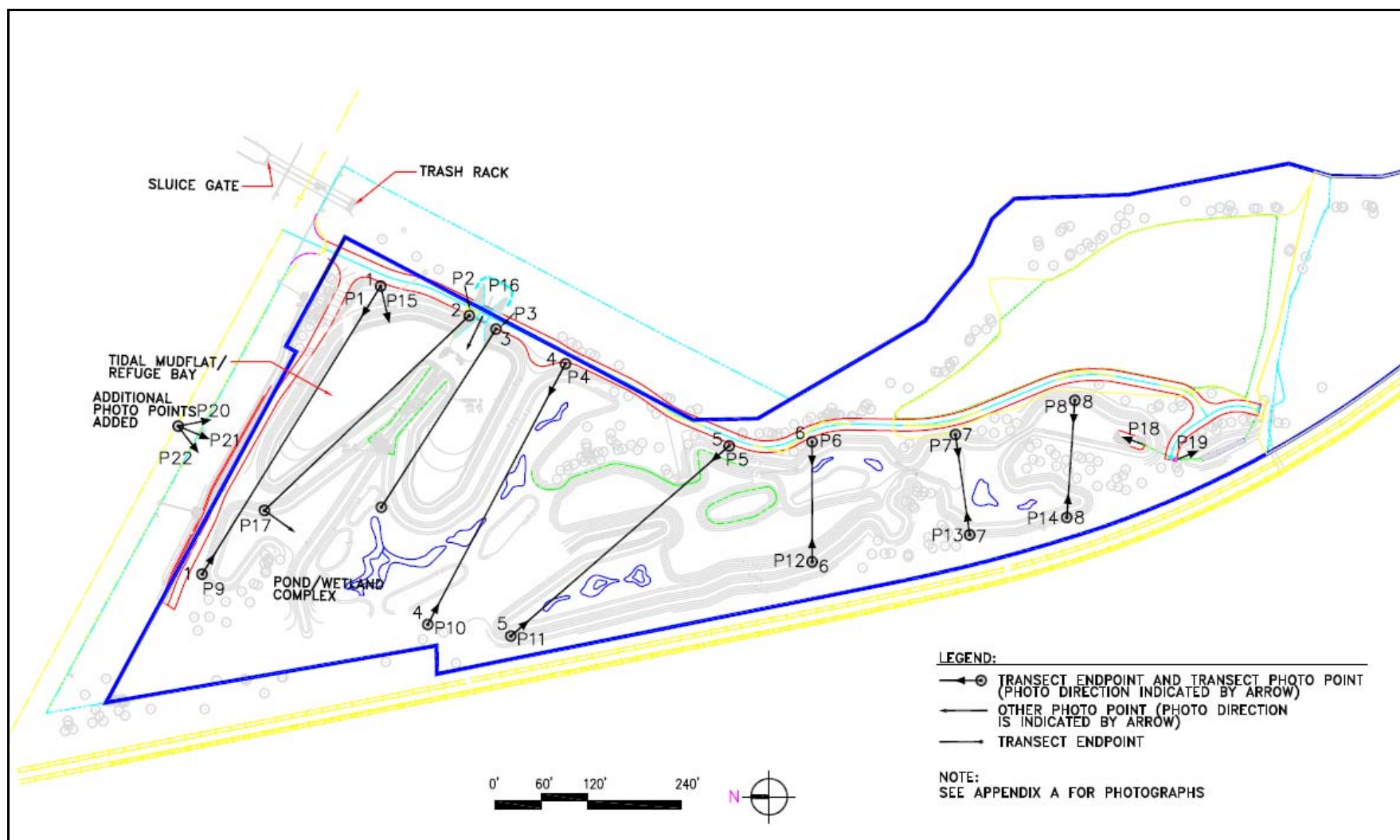


Figure 2. Clear Creek Habitat Improvement Project site map indicating location of photo point transects during May and November 2008.

3. DISCUSSION

The Clear Creek Habitat Improvement Project was designed to provide refuge, feeding, and rearing habitat for juvenile salmonids and other wildlife in the lower reaches of the Puyallup River system. Construction of the site has resulted in increased wetland, open water, and upland habitats that effectively promote the goals of the Project.

The 2008 monitoring activities demonstrate that adequate inundation continues to occur within the pond/wetland complex. Previous years' monitoring results have documented salmonid and waterfowl utilization of the Clear Creek habitat area. It is expected that adequate inundation will continue to occur and fish and waterfowl will continue to utilize the habitat.

Furthermore, the 2008 monitoring results document that vegetation growth at the habitat area has continued to progress. Overall, the Port concludes that the Clear Creek Habitat Improvement Project effectively provides a diverse range of habitat with wetland, open water, and upland components (OMMP Functional Objective 2.B.).

4. REFERENCES

Grette Associates^{LLC}. 2000. Sitcum Waterway Remediation Project Clear Creek Habitat Improvement Project Monitoring Report, 1999.

Grette Associates^{LLC}. 2002. Sitcum Waterway Remediation Project Clear Creek Habitat Improvement Project Monitoring Report, 2001.

Grette Associates^{LLC}. 2004. Sitcum Waterway Remediation Project Clear Creek Habitat Improvement Project Monitoring Report, 2003.

Port of Tacoma. 1995. Clear Creek Habitat Improvement Project. Operations, Maintenance, and Monitoring Plan.

SITCUM WATERWAY REMEDIATION PROJECT

CLEAR CREEK HABITAT IMPROVEMENT PROJECT MONITORING REPORT, 2008

APPENDIX A: MONITORING PHOTOS

APPENDIX A TABLE OF CONTENTS

<u>Photo</u>	<u>Page</u>
Photo 1A	Photo Point P1, Transect 1 (10 ft), September 2008..... A-1
Photo 1B	Photo Point P1, Transect 1 (10 ft), November 2008..... A-1
Photo 2A	Photo Point P2, Transect 2 (10 ft), September 2008..... A-1
Photo 2B	Photo Point P2, Transect 2 (10 ft), November 2008..... A-1
Photo 3A	Photo Point P3, Transect 3 (10 ft), September 2008..... A-2
Photo 3B	Photo Point P3, Transect 3 (10 ft), November 2008..... A-2
Photo 4A	Photo Point P4, Transect 4 (10 ft), September 2008..... A-2
Photo 4B	Photo Point P4, Transect 4 (10 ft), November 2008..... A-2
Photo 5A	Photo Point P5, Transect 5 (water's edge), September 2008 A-3
Photo 5B	Photo Point P5, Transect 5 (water's edge), November 2008 A-3
Photo 6A	Photo Point P6, Transect 6, September 2008..... A-3
Photo 6B	Photo Point P6, Transect 6, November 2008 A-3
Photo 7A	Photo Point P7, Transect 7 (10 ft), September 2008..... A-4
Photo 7B	Photo Point P7, Transect 7 (10 ft), November 2008..... A-4
Photo 8A	Photo Point P8, Transect 8 (water's edge), September 2008 A-4
Photo 8B	Photo Point P8, Transect 8 (water's edge), November 2008 A-4
Photo 9A	Photo Point P9, Transect 1 (water's edge), September 2008 A-5
Photo 9B	Photo Point P9, Transect 1 (water's edge), November 2008 A-5
Photo 10A	Photo Point P10, Transect 4, September 2008..... A-5
Photo 10B	Photo Point P10, Transect 4, November 2008..... A-5
Photo 11A	Photo Point P11, Transect 5 (water's edge), September 2008 A-6
Photo 11B	Photo Point P11, Transect 5 (water's edge), November 2008 A-6
Photo 12A	Photo Point P12, Transect 6 (water's edge), September 2008 A-6
Photo 12B	Photo Point P12, Transect 6 (water's edge), November 2008 A-6
Photo 13A	Photo Point P13, Transect 7 (water's edge), September 2008 A-7
Photo 13B	Photo Point P13, Transect 7 (water's edge), November 2008 A-7
Photo 14A	Photo Point P14, Transect 8, September 2008..... A-7
Photo 14B	Photo Point P14, Transect 8, November 2008..... A-7
Photo 15A	Photo Point P15, Transect 1 (10 ft), September 2008 A-8
Photo 15B	Photo Point P15, Transect 1 (10 ft), November 2008..... A-8
Photo 16A	Photo Point P16 from Bridge, September 2008..... A-8
Photo 16B	Photo Point P16 from Bridge, November 2008..... A-8
Photo 17A	Photo Point P17, Transect 2, September 2008..... A-9
Photo 17B	Photo Point P17, Transect 2, November 2008..... A-9
Photo 18A	Photo Point P18 at the Swan Creek Inflow, September 2008..... A-9
Photo 18B	Photo Point P18 at the Swan Creek Inflow, November 2008 A-9
Photo 19A	Photo Point P19, Swan Creek Refuge Bay, September 2008 A-10
Photo 19B	Photo Point P19, Swan Creek Refuge Bay, November 2008 A-10
Photo 20A	Photo Point P20 from River Road (SE), September 2008..... A-10
Photo 20B	Photo Point P20 from River Road (SE), November 2008..... A-10
Photo 21A	Photo Point P21 from River Road (S), September 2008 A-11
Photo 21B	Photo Point P21 from River Road (S), November 2008 A-11
Photo 22A	Photo Point P22 from River Road (SW), September 2008 A-11
Photo 22B	Photo Point P22 from River Road (SW), November 2008 A-11



Photo 1A. Photo Point P1, Transect 1 (10 ft), September 2008



Photo 1B. Photo Point P1, Transect 1 (10 ft), November 2008



Photo 2A. Photo Point P2, Transect 2 (10 ft), September 2008



Photo 2B. Photo Point P2, Transect 2 (10 ft), November 2008



Photo 3A. Photo Point P3, Transect 3 (10 ft), September 2008



Photo 3B. Photo Point P3, Transect 3 (10ft), November 2008



Photo 4A. Photo Point P4, Transect 4 (10 ft), September 2008



Photo 4B. Photo Point P4, Transect 4 (10ft), November 2008



Photo 5A. Photo Point P5, Transect 5 (water's edge), September 2008



Photo 5B. Photo Point P5, Transect 5 (water's edge), November 2008

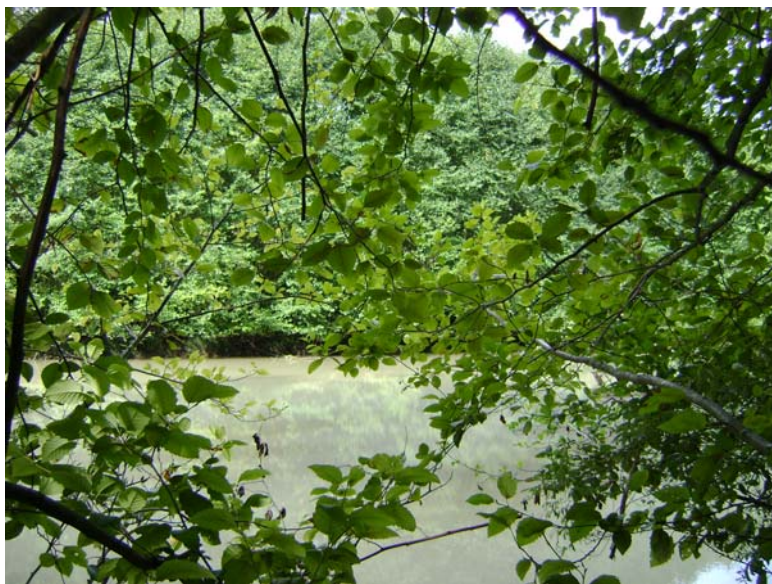


Photo 6A. Photo Point P6, Transect 6, September 2008



Photo 6B. Photo Point P6, Transect 6, November 2008



Photo 7A. Photo Point P7, Transect 7 (10 ft), September 2008



Photo 7B. Photo Point P7, Transect 7 (10 ft), November 2008



Photo 8A. Photo Point P8, Transect 8 (water's edge), September 2008



Photo 8B. Photo Point P8, Transect 8 (water's edge), November 2008



Photo 9A. Photo Point P9, Transect 1 (water's edge), September 2008



Photo 9B. Photo Point P9, Transect 1 (water's edge), November 2008



Photo 10A. Photo Point P10, Transect 4, September 2008



Photo 10B. Photo Point P10, Transect 4, November 2008



Photo 11A. Photo Point P11, Transect 5 (water's edge), September 2008



Photo 11B. Photo Point P11, Transect 5 (water's edge), November 2008



Photo 12 A. Photo Point P12, Transect 6 (water's edge), September 2008



Photo 12B. Photo Point P12, Transect 6 (water's edge), November 2008



Photo 13A. Photo Point P13, Transect 7 (water's edge), September 2008



Photo 13B. Photo Point P13, Transect 7 (water's edge), November 2008



Photo 14A. Photo Point P14, Transect 8, September 2008



Photo 14B. Photo Point P14, Transect 8, November 2008



Photo 15A. Photo Point P15, Transect 1 (10ft), September 2008



Photo 15B. Photo Point P15, Transect 1 (10ft), November 2008



Photo 16A. Photo Point P16 from Bridge, September 2008



Photo 16B. Photo Point P16 from Bridge, November 2008



Photo 17A. Photo Point P17, Transect 2, September 2008



Photo 17B. Photo Point P17, Transect 2, November 2008



Photo 18A. Photo Point P18 at the Swan Creek Inflow, September 2008



Photo 18B. Photo Point P18 at the Swan Creek Inflow, November 2008



Photo 19A. Photo Point P19, Swan Creek Refuge Bay, September 2008



Photo 19B. Photo Point P19, Swan Creek Refuge Bay, November 2008



Photo 20A. Photo Point P20 from River Road (SE), September 2008



Photo 20B. Photo Point P20 from River Road (SE), November 2008



Photo 21A. Photo Point P21 from River Road (S), September 2008



Photo 21B. Photo Point P21 from River Road (S), November 2008



Photo 22A. Photo Point P22 from River Road (SW), September 2008



Photo 22B. Photo Point P22 from River Road (SW), November 2008