



The Silver Valley and Coeur d'Alene Basin are great places to live, work, and play. Knowing the facts about our area will help keep you and your family healthy. Past mining practices left behind large volumes of lead and other heavy metals. Since the 1980s, we have made great progress in reducing risks. For example, over 7,000 properties have been cleaned up. Even so, lead and other metals remain. Read on for tips to limit exposure and safely enjoy this beautiful environment.

Lead in our Area

- In our area, lead from past mining practices is often found in:
 - Soil on hillsides and around old mill sites
 - Soil on the river banks and floodplains
 - Dirt tracked into vehicles or into homes from these areas
 - Soil under clean soil caps, under foundations and in dirt basements
 - Dust in homes
- Lead paint can be present in homes built before 1978. Learn more at <https://www.epa.gov/lead/protect-your-family-exposures-lead>
- Some toys and ceramics may contain lead.

Lead Poses a Risk

Lead is most dangerous to young children, pregnant women, and unborn children. It can cause learning disabilities, behavioral problems and slower growth. Lead can pose a risk to adults, too, causing memory loss, irritability, high blood pressure and muscle or joint pain. Lead is taken into the body by swallowing lead-contaminated dirt or water, or by inhaling air contaminated by lead dust.

- Even small amounts of lead can harm a child -- even less than a quarter teaspoon of contaminated dust or soil.
- Young children crawling and putting hands in their mouths have the most risk.
- There is no safe level of lead exposure.

Keep Clean, Eat Clean, Play Clean! **Reduce lead exposure:**

- Know where to play outdoors safely. If you don't know, ask. Contacts listed at the end of this pamphlet can help.
- Keep hands clean, especially after playing outside and before eating.
 - Teach your children how to wash hands properly. Use soap and water, but not creek or river water. Wash for at least 20 seconds to remove lead particles.
 - Hand sanitizer kills germs —but will not remove lead.



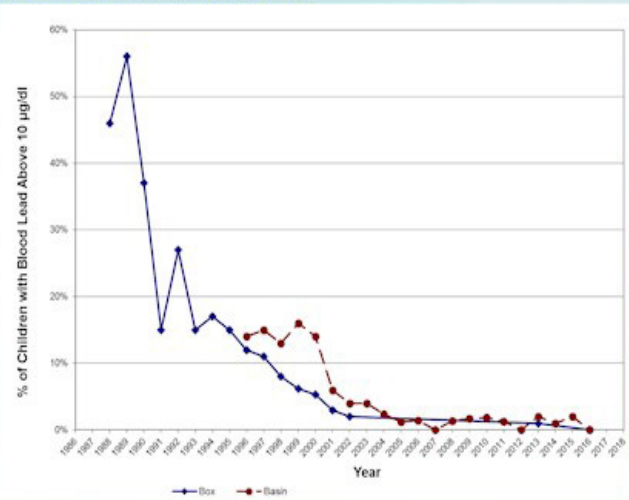
- Have a table or clean barrier (such as a towel or blanket) between your food and the ground.
- When riding ATVs, motorcycles and bikes off-road, wear protective gear including mask or bandana.
- Dust off or wash off what you can to minimize dirt that you bring home.
- Wash pets that have played in the dirt or swam in the river before letting them into your home.

Riley Says: Keep Clean, Eat Clean, Play Clean!

The Cleanup

Since the cleanup began, the area has become a healthier place to live, work, and play. Yards and public spaces are getting cleaned up. Hillsides are lush and green again. The Trail of the Coeur d'Alenes draws recreationalists and visitors season after season. Many roads in the valley are getting repaired to protect public health. About 400 local people are directly employed by the cleanup each year. The best cleanup news of all is that children's blood lead levels have dropped sharply (see chart).

Percent of Children with Blood Lead Levels ≥ 10 $\mu\text{g/dl}$, Box and Basin, 1988-2016



The cleanup is aimed at reducing risk and cleaning up contamination. It will take a long time. Here is some priority work going on now:

- Continuing property cleanups
 - Starting contaminated groundwater collection and treatment
 - Developing plans to address recreational and wildlife areas
 - Managing the local Institutional Controls Program
 - Paving public roads which serve as barriers to contamination
- Cleaning up mine waste at non-operating mine and mill sites
 - Taking steps to keep cleaned-up areas clean
 - Providing and operating repositories to safely secure waste soils
 - Continuing public outreach and education



What You Can Do...

Have Your Child's Blood-Lead Tested

The only way to know your child's blood lead level is to test it. Screening is available free of cost year-round. Plus, each summer, Panhandle Health District offers free testing for young children. PHD also provides free, private consultations on how to reduce exposures. 📞 208-783-0707

Talk to Your Health Care Provider

Anyone identified with a high blood lead level should consult with their primary care provider. Also, pregnant women are encouraged to talk to their health care provider early about ways to avoid the risk of lead exposure.



Get Your Yard Tested

Contact DEQ for information about getting your yard soil tested. 📞 208-783-5781

Follow the Institutional Controls Program (ICP)

Community members help keep contamination in check by following the ICP. The ICP is a locally enforced set of regulations to control re-contamination. It is operated by PHD. Permits are needed for many types of indoor and outdoor construction activities. Permits and consultations are free. You must comply with the ICP before digging on your property or starting some interior projects. 📞 208-783-0707

Get More Info and Borrow a Vacuum

The PHD office at 114 W. Riverside in Kellogg offers helpful information. Topics include local lead exposures, how to reduce risks, how lead affects the body, and information about buying and selling property in the Superfund Site. PHD also loans vacuum cleaners to residents. Frequent vacuuming often reduces in-home exposure. 📞 208-783-0707

A fish consumption advisory is in effect for Lake Coeur d'Alene, the Coeur d'Alene River, and the Chain Lakes.

Learn more at: <https://go.usa.gov/xRTds>



Information for Property Owners



Yard cleanups reduce residents' exposure to lead and other metals. Over 7,000 properties have been cleaned up to date.

The ICP tracks completed cleanups, sampling results, and property improvements. Records are commonly requested prior to land sales and loan refinancing. ☎ 208-783-0707

Lead-contaminated soil is part of federal lead disclosure requirements.

- [Guidelines for Property Owners Affected by Mine Waste Within the Bunker Hill Superfund Site](http://www.basincommission.com/news/AIA%20Superfund%20Liability.pdf) is available on the web. This document helps property owners understand possible Superfund liability for mining-related waste. Go to <http://www.basincommission.com/news/AIA%20Superfund%20Liability.pdf> EXIT

This link leaves the EPA website and enters an external link or a third-party site. (Links are case-sensitive.)

- To learn about obligations to disclose before the purchase and lease of housing built before 1978 and located within the Bunker Hill Superfund Site, download a [brochure](http://bit.ly/2uhMiPj) at <http://bit.ly/2uhMiPj>. The brochure is called *Lead-Contaminated Soil – Residential Real Estate Transaction Disclosure Requirements: Information for Owners, Landlords & Sellers, Buyers, and Renters, Real Estate Agents*. It defines “lead-based paint hazard” and “soil lead hazard.” It also lists the obligations of the seller, landlord, and real estate agent.
- Idaho law requires certain disclosures by seller/owners of residential property and real estate brokers and salespersons regarding the condition of certain real property.
 - Idaho Code Sections 55-2501-2518, the “Idaho Property Disclosure Act,” requires seller/owners of residential real property to disclose the known presence of hazardous materials or substances to prospective buyers.
 - Sections 54-2086 and 2087 of the “Idaho Real Estate License Law” requires real estate brokers and salespersons to disclose all adverse material facts actually known or which reasonably should have been known about the real estate to buyer/seller customers and clients.

For More Information

Contacts

Rene Gilbert, EPA Community Liaison

208-659-5237 • gilbert.maureen@epa.gov

Debra Sherbina, EPA Community Involvement

206-553-0247 • 800-424-4372, ext. 0247 • sherbina.debra@epa.gov

Valerie Wade, Panhandle Health District

208-783-0707 • vwade@phd1.idaho.gov

Ed Moreen, EPA, Coeur d'Alene

208-664-4588 • moreen.ed@epa.gov

Anne McCauley, EPA, Seattle

206-553-4689 • 800-424-4372, ext. 4689 • mccauley.anne@epa.gov

Dan McCracken, DEQ, Kellogg

208-783-5781 • dan.mccracken@deq.idaho.gov

Andy Helkey, Panhandle Health District

208-783-0707 • ahelkey@phd1.idaho.gov

Terry Harwood, Basin Environmental Improvement Project Commission

208-783-2528 • terry.harwood@deq.idaho.gov

EPA provides reasonable accommodation to individuals with disabilities where appropriate. If you need a reasonable accommodation, such as requiring information in a certain format (Braille, large print), please notify **Debra Sherbina**, listed above.

Attend Citizens' Coordinating Council Meetings

This citizen's forum is the main avenue for public input into Basin Commission activities. www.basincommission.com/CCC.asp

Web Resources (Links are case-sensitive)

Panhandle Health District

<http://panhandlehealthdistrict.org/icp>

Idaho Department of Environmental Quality

<https://go.usa.gov/xNhcR>

The Basin Environmental Improvement Project Commission

www.basincommission.com

EPA – Coeur d'Alene Basin Cleanup

<http://go.usa.gov/caz4h>

EPA – Lead Health Information

www.epa.gov/lead

EPA's Cleanup Facebook Page

www.facebook.com/cdabasin

EPA Cleanup Newsletter:

Basin Bulletin go.usa.gov/xNhqx

Join our mailing list:

sherbina.debra@epa.gov, 206-553-0247 or 800-424-4372