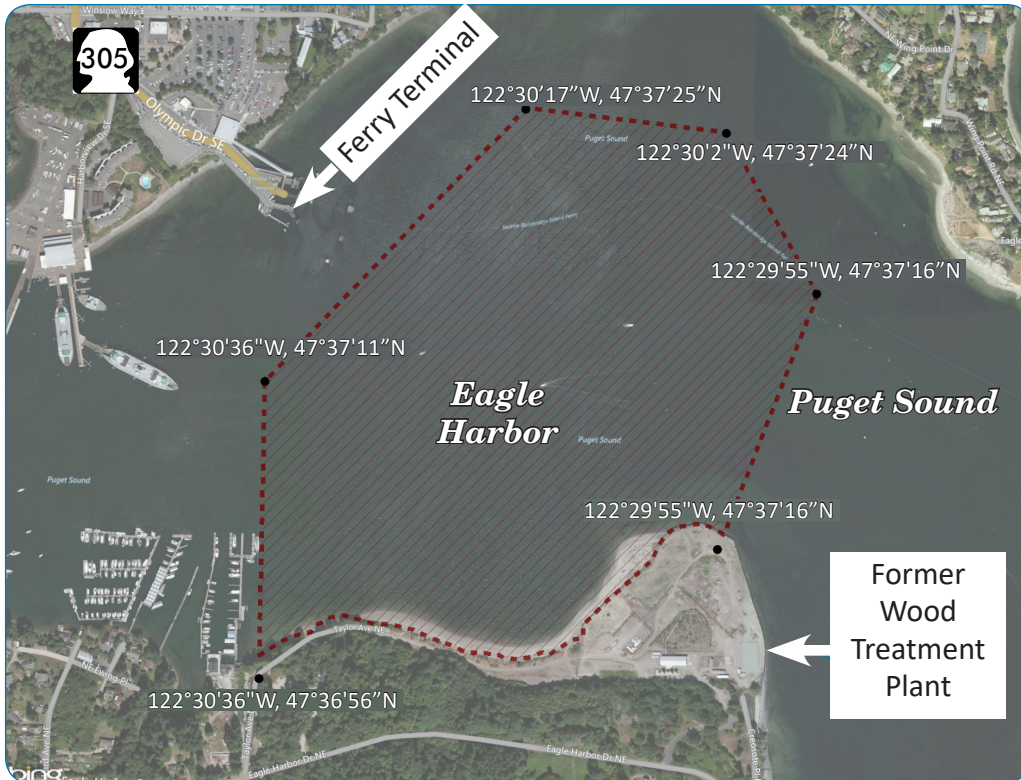


## Attention Boaters!

# 'No Anchor' area in Eagle Harbor

May 2017

Anchoring is prohibited over a large area in the eastern part of Eagle Harbor. The map shows the boundaries of the "Regulated Navigation Area."



*The "Regulated Navigation Area" within Eagle Harbor. Boaters are prohibited from anchoring, dredging, and other activities within its boundaries.*

## Why the 'No Anchor' restriction?

The sea floor in Eagle Harbor became heavily contaminated with creosote released from a former wood treating facility on the south side of the harbor. Creosote is a thick, oily, toxic liquid used to preserve rail road ties, utility poles and pier pilings. In the mid-1990s, to protect fish and other marine life, EPA "capped" portions of Eagle Harbor by burying the contamination under a layer of clean sand. Anchoring could penetrate the sand cap, bringing contamination to the surface. It could also contaminate anchors and lines, exposing boaters to the contamination.

## What activities are prohibited?

The regulation, which can be found in the Coast Pilot and at 33 CFR 165.1307, states: "All vessels and persons are prohibited from **anchoring, dredging, laying cable, dragging, seining, bottom fishing, conducting salvage operations**, or any other activity which could potentially **disturb the seabed** in the designated area. Vessels may otherwise transit or navigate within this area without reservation."

To learn more about the Wyckoff site, visit EPA's web site at: <http://www.epa.gov/superfund/wyckoff-eagle-harbor>.

For questions about the Regulated Navigation Area, or other mooring options in Eagle Harbor, contact **Tami Allen**, Harbormaster, [tallen@bainbridgewa.gov](mailto:tallen@bainbridgewa.gov) 206-780-3733.


## For Information, Contact:

**Helen Bottcher**, Project Manager  
[bottcher.helen@epa.gov](mailto:bottcher.helen@epa.gov)  
800-424-4372, extension 6069

**Debra Sherbina**, Community Involvement Coordinator,  
[sherbina.debra@epa.gov](mailto:sherbina.debra@epa.gov)  
800-424-4372, extension 0247

This document can be made available in other languages by request.

If you need this document in an alternative format, contact **Debra Sherbina** at 800-424-4372, extension 0247.

 TDD users please call the Federal Relay Service: 800-877-8339 and give the operator Debra Sherbina's phone number.