

REUSE CONCEPT PLAN

Quincy Smelting Works, Franklin Township, Michigan



EXECUTIVE SUMMARY

The Quincy Smelting Works has the potential to be a unique and significant regional destination – providing jobs, community pride, recreational opportunities and a catalyst for heritage tourism in Michigan’s Upper Peninsula. Co-locating Isle Royale National Park’s headquarters, maintenance and docking facilities on the Quincy Smelter property provides a strategic location just north of the Portage Canal to introduce visitors to the story of Michigan’s copper mining industry alongside the gateway to the scenic and rugged beauty of Isle Royale.

Locating Isle Royale National Park headquarters, maintenance and docking facilities on the Quincy Smelter property will:

- Provide Isle Royale with new facilities on Portage Lake that may not otherwise be possible, and
- Support the continued preservation and increase interpretation of a National Historic Landmark within Keweenaw National Historical Park.

STAKEHOLDER SUPPORT

The recommendation outlined in this proposal was developed over three years of extensive interagency and community collaboration. During this time, significant progress has been made to support future use for the Quincy Smelting Works. EPA has completed the cleanup of the site, and the National Park Service has conducted a value analysis of the proposal. In addition, a developer has been enlisted to determine feasibility, financing and cost implications of the recommended plan. The attached proposal has broad community support and has been endorsed by the Quincy Smelter Steering Committee.

PROJECT IMPLEMENTATION

Several steps are needed to transform the vision to reality:

- Determine optimal development, finance, and ownership structure to meet objectives of all parties and fund the project.
- Align Isle Royale’s programming needs with the layout of the Smelter buildings.
- Identify and pursue other funding for access and stabilization of the non Isle Royale portions of the site.

This proposal includes the background, the community goals and a recommended concept plan for moving forward.



Community Future Use Goals

- Preserve Quincy Smelter for public education and interpretation of park themes.
- Relocate Isle Royale’s headquarters and facilities to the site.
- Provide a regional destination for the Upper Peninsula’s heritage tourism economy.
- Integrate compatible uses to attract a diversity of visitors, generate a feeling of activity and provide for year-round use.
- Provide improved public waterfront access.
- Ensure the long-term economic sustainability and stewardship of the site.

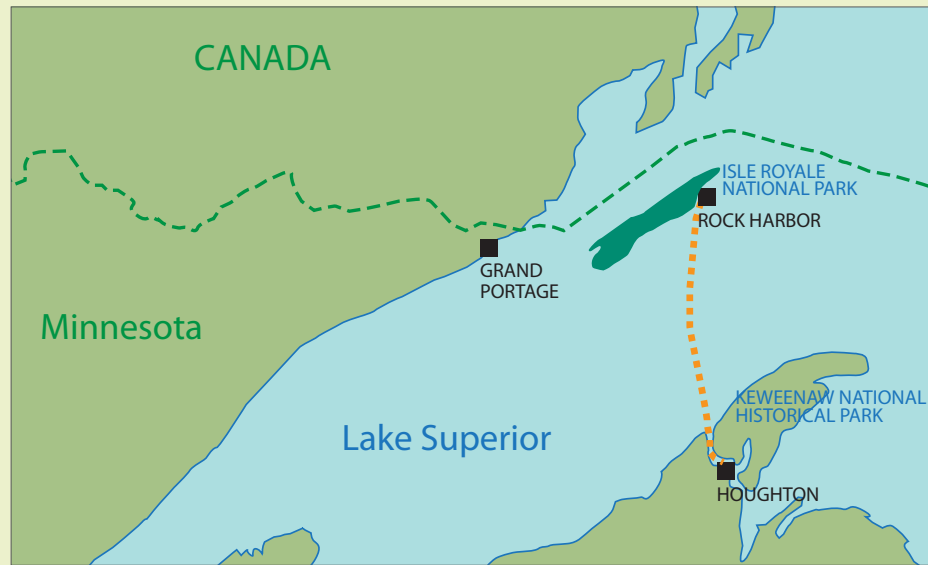
INVESTING IN THE REGION

BACKGROUND

The Quincy Smelting Works is part of the Quincy Mining Company National Historic Landmark District within the boundary of Keweenaw National Historical Park (NHP). The site includes the copper smelting complex of the Quincy Mining Company – the most complete example of an early twentieth century copper smelter in the world. When the Keweenaw NHP was established in 1992, Congress recognized the Quincy Smelting Works as representing a key component of the story of copper mining on Michigan's Keweenaw Peninsula.

The site is also part of the Torch Lake Superfund Site due to stamp sands deposited on site during copper mining industry operations. EPA Region 5 completed cleanup of the site in September 2011 and has simultaneously sponsored a multi-year reuse planning process to facilitate the restoration and reuse of the site.

Since 2008, the reuse planning process developed a foundation of interagency collaboration, held a community open house and working session, defined a community vision for the site and formed the Quincy Smelter Steering Committee. This process has resulted in broad stakeholder and interagency momentum around the vision of Quincy Smelter as a cultural heritage destination and the gateway to Isle Royale.



Ranger III ferry route to Isle Royale.



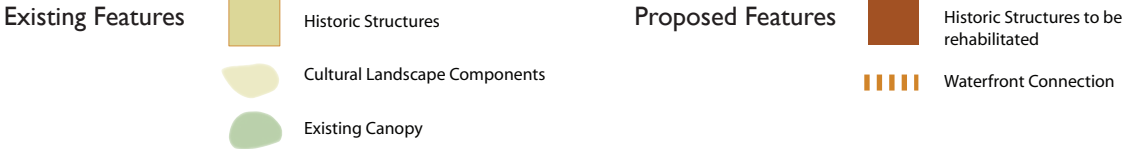
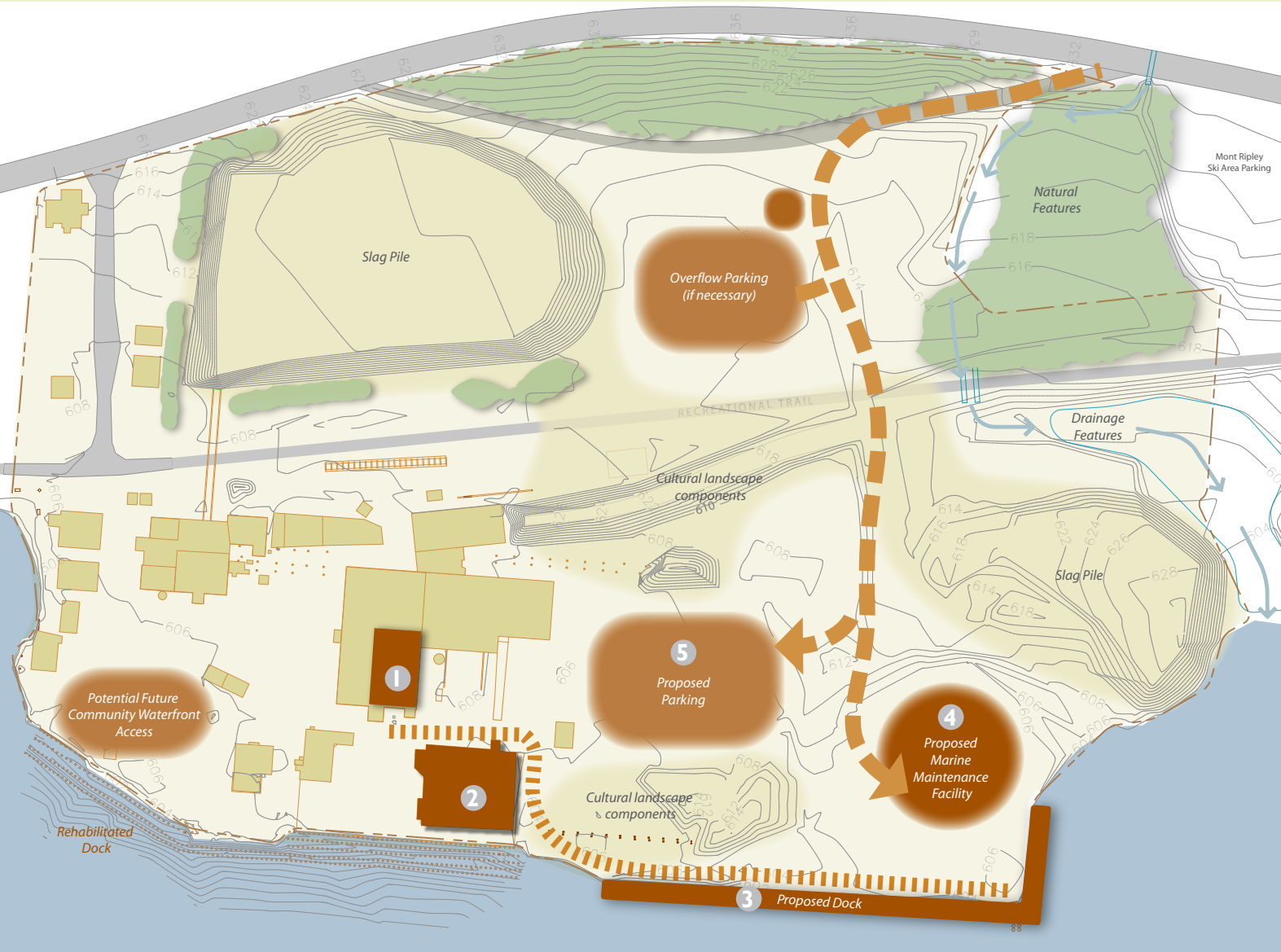
Keweenaw Heritage Sites. Source: National Park Service



Overhead rail trestles are one of the historic features at Quincy Smelter. Source: EPA.



CONCEPT PLAN



PROPOSAL

The Quincy/Isle Royale redevelopment proposal includes:

- 1 Rehabilitating the historic Reverberatory Furnace building for reuse by Isle Royale National Park.
- 2 Rehabilitating the historic dockside warehouse as a visitor welcome center and passenger waiting area.
- 3 Building a dock and waterfront connection to the welcome center.
- 4 Building a marine maintenance facility.
- 5 Adding access and parking facilities.

Below: Reverberatory Furnace Building (a) and Dockside Warehouse (b) slated for rehabilitation and reuse.



SUPPORT FOR MOVING FORWARD

Quincy Smelter, Franklin Township, Michigan



For more information, contact:

Glenn Ekdahl
Supervisor, Franklin Township
906-369-1498 / gpek Dahl@mtu.edu

Mike Pflaum
Superintendent, National Park Service
906-483-3020 / Mike_Pflaum@nps.gov

Scott See
Exec. Dir., Keweenaw NHP Advisory Commission
906-483-3040 / Scott_See@partner.nps.gov

Rosita Clark
Site Reuse Coordinator, EPA Region 5
312-886-7251 / Clarke.Rosita@epa.gov

ACKNOWLEDGEMENTS

The Quincy Smelter Steering Committee is a collaborative group of individuals, organizations, and agencies working in support of Franklin Township's revitalization efforts. Through cooperative planning, fundraising, education, and support we will return this facility to beneficial use in a way that both enhances the quality of life in our community and communicates the story of our copper mining heritage for future generations.

General Members

Glenda Bierman, Manager, Quincy Mine Hoist Association
Dallas Bond, former Executive Director, Keweenaw, Peninsula Chamber of Commerce
Cynthia Cote, Director, Copper Country Arts
Steve DeLong, Landscape Architect, National Park Service
Kim Hoagland, Chair, Keweenaw NHP Advisory Commission
Phillip Johnson, President, Finlandia University
John Laitinen, Board Trustee, Franklin Township
Pat Martin, Chair, Department of Social Sciences, MTU
Phil Musser, Executive Director, KEDA
Meg Pachmayer, Planner, Western U.P. Planning and Development Region
Betsy Rossini, Isle Royale National Park
Tim Scarlett, Graduate Program Director, Industrial Archeology, MTU
Mary Sears, Quincy Smelter Association
John Slivon, Hancock City Council Member

Executive Members

Tom Baker, Park Ranger/Mgmt. Asst., National Park Service
Glenn Ekdahl, Supervisor, Franklin Township – Co-Chair
Phyllis Green, Superintendent, Isle Royale National Park
Ed Jenich, Houghton County Board of Commissioners
Bill Laitila, Mayor, City of Hancock
Scott MacInnes, Mayor, City of Houghton
Mike Pflaum, Superintendent, National Park Service - Co-Chair
Scott See, Exec. Dir., Keweenaw NHP Advisory Commission - Co-Chair

Technical Advisors

Amy Berglund, U.P. Regional Representative, Senator Carl Levin
Tom Bloom, SRI Coordinator, EPA Region 5
Tom Casperson, State Senator (or designee)
Sandra Clark, Director, Michigan Historical Center
Rosita Clark-Moreno, Reuse Project Manager, EPA Region 5
Scott Cornelius, Project Manager, MDEQ
Brian Conway, Michigan State Historic Preservation Officer
Steve DeLong, Landscape Architect, National Park Service
Jeremy Hosking, Regional Manager, Senator Debbie Stabenow
Matt Huuki, State Representative (or designee)
Traci Jahnke, District Representative, Congressman Dan Benishek
Flo McCormack, Grant Services Coordinator, Michigan Association of Counties
Dave Novak, Community Involvement Coordinator, EPA Region 5
Nefertiti Simmons, Remedial Project Manager, EPA Region 5
U.P. Director, Governor Rick Snyder