



Agenda Overview

October 11, 2018, 6:00 p.m. - 8:00 p.m.

- Introductions (Mark Ferrell, EPA)
- Welcome (Cosmo Servidio, Regional Administrator, EPA)
- NPL Proposal (Justin Bleiler, EPA)
- Superfund Remedial Process (Stepan Nevshehirlian, EPA)
- Community Resources (Cathleen Kennedy, EPA)
- Q&A (All)
- Closing (Mark Ferrell, EPA)



Shaffer Equipment/Arbuckle Creek Area National Priorities List (NPL) Proposal

October 11, 2018

New Beginning Apostolic Church, Minden



We will cover:

- National Priorities List (NPL) Proposal
- June 2018 sampling
- Remedial process
- Ways to get involved



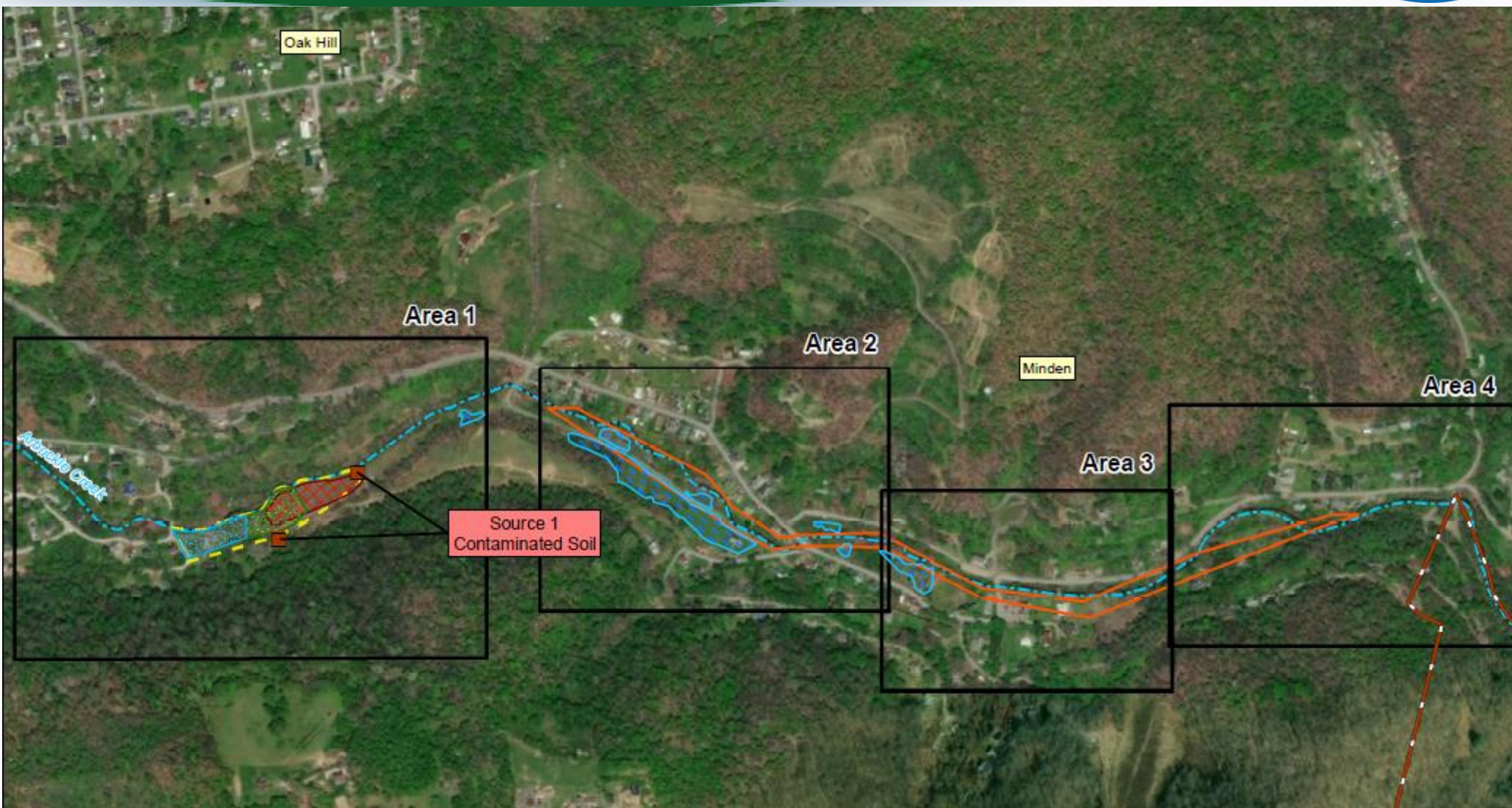
National Priorities List (NPL) Proposal

- What is the NPL?
- Hazard Ranking System (HRS) package and score of 50.54
- Site was proposed to the NPL on September 13, 2018; public comments accepted until November 13, 2018
- Decision will be made whether to finalize the site on the NPL



Site Definition

- The Hazard Ranking System (HRS) defines preliminary boundaries of contamination
 - Shaffer Equipment
 - Arbuckle Creek
 - Soils in the floodplain which contain contamination
- Site boundaries will be better defined through the remedial process



Legend

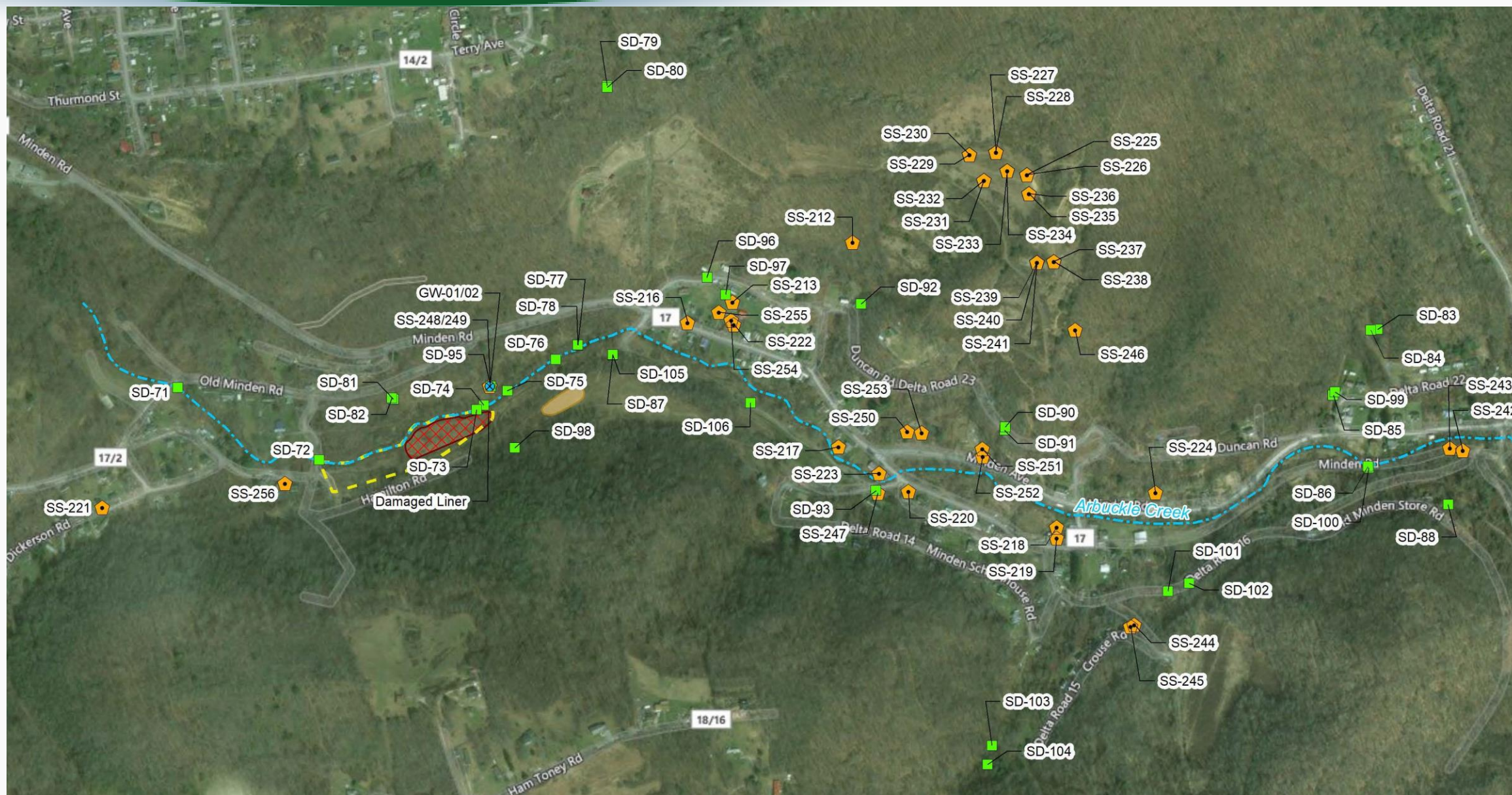
-  Approximate Shaffer Equipment Company Boundary
-  Sampling Areas
-  Capped Area Boundary
-  Excavation (6 inch)
-  Excavation (2 ft)
-  New River Gorge National River Park Boundary
-  Source 2/AOC A
-  Delineated Wetland Boundaries
-  Arbuckle Creek

Data Sources:
 Refs. 11, p. 10; 12, pp. 51-53; 32, pp. 1, 2; 67, p. 13; 84, pp. 1, 2; 85, pp. 1, 2; 96
 Section 2.2.2 of this HRS documentation record

Background: ESRI, Mapping Service
 The source of this map image is Esri, used by the EPA with Esri's permission

Coordinate System:
 WGS84 UTM Zone 17N Feet







How You Can Get Involved

- Public comment period is open until November 13, 2018
- Comments can be submitted through:
 - www.regulations.gov – Enter Docket # EPA-HQ-OLEM-2018-0586
 - Mail



Make a difference. Submit your comments and let your voice be heard.

SEARCH for: Rules, Comments, Adjudications or Supporting Documents:

[Search](#)[» Advanced Search](#)

What's Trending

[Endangered and Threatened Species: Listing Species and Designating Critical Habitat](#)

Closed on Sep 24, 2018

[Endangered and Threatened Species: Revision of Regulations for Prohibitions to Threatened Wildlife and Plants](#)

Closed on Sep 24, 2018

[Endangered and Threatened Species: Interagency Cooperation](#)

Closed on Sep 24, 2018

[National Primate Research Centers \(Letter of Support for NABR\)](#)

[Apprehension, Processing, Care, and Custody of Alien Minors and Unaccompanied Alien Children](#)

Closing on Nov 06, 2018

Comments Due Soon

[Today](#) (13)

[Next 3 Days](#) (40)

[Next 7 Days](#) (154)

[Next 15 Days](#) (314)

[Next 30 Days](#) (618)

[Next 90 Days](#) (945)

Newly Posted

[Today](#) (90)

[Last 3 Days](#) (175)

[Last 7 Days](#) (420)

[Last 15 Days](#) (985)

[Last 30 Days](#) (1,918)

[Last 90 Days](#) (5,654)

[Unable to submit a comment?](#)[FAA Section 333](#)[APIs for Developers](#)[Browse by Category](#)

Use the Browse tab to View
Featured Regulations



1 result for "EPA-HQ-OLEM-2018-0586"

Filter Results By...

Comment Period

- ☐ Open (0)
- ☐ Closed (0)

Document Type

Clear Filter

- ☒ Notice
- ☒ Proposed Rule
- ☒ Rule
- ☐ Supporting & Related Material (3)
- ☒ Other
- ☐ Public Submission (13)

Posted

Search All

Comments Due

Search All

Show [more documents](#) that include the term "EPA-HQ-OLEM-2018-0586"

Results per page: 25



Sort By: Best Match

Featured Result - Docket ID: EPA-HQ-OLEM-2018-0586

[Open Docket Folder](#)

National Priorities List, Notice of Proposed Rulemaking - Shaffer Equipment/Arbuckle Creek Area

Agency: Environmental Protection Agency (EPA)

Summary: NPL Proposed Rule

National Priorities List

Proposed Rule by EPA on 09/13/2018

ID: EPA-HQ-OLEM-2018-0586-0001

[Comment Now!](#)

Due Nov 13, 2018 11:59 PM ET

[Open Docket Folder](#)

RIN: Not Assigned



Page

1

of 1



Displaying 1 - 1 of 1



National Priorities List, Notice of Proposed Rulemaking - Shaffer Equipment/Arbuckle Creek Area

Docket Folder Summary [View all documents and comments in this Docket](#)

Docket ID: EPA-HQ-OLEM-2018-0586 Agency: Environmental Protection Agency (EPA)

Summary:
NPL Proposed Rule

RIN: Not Assigned

[+ View More Docket Details](#)

Primary Documents [View All](#) (1)



National Priorities List

Proposed Rule Posted: 09/13/2018 ID: EPA-HQ-OLEM-2018-0586-0001

[Comment Now!](#)

Due Nov 13, 2018 11:59 PM ET

Supporting Documents [View All](#) (3)



HRS Documentation Record - Shaffer Equipment Arbuckle Creek Area

Supporting & Related Material Posted: 09/13/2018 ID: EPA-HQ-OLEM-2018-0586-0002

Comments Not Accepted



State/Tribal Correspondence - Shaffer Equipment Arbuckle Creek Area

Supporting & Related Material Posted: 09/13/2018 ID: EPA-HQ-OLEM-2018-0586-0004

Comments Not Accepted



Narrative Summary - Shaffer Equipment Arbuckle Creek Area

Supporting & Related Material Posted: 09/13/2018 ID: EPA-HQ-OLEM-2018-0586-0003

Comments Not Accepted

Comments [View All](#) (14)

[Take a Tour!](#)

[Sign up for Email Alerts](#)

14

Comments Received*

[Tweet](#) [Share](#) [Email](#)

Agency Contact

Terry Jeng

RW

EPA

jeng.terry@epa.gov

703-603-8852 

*This count refers to the total comment/submissions received on this docket, as of 11:59 PM yesterday. Note: Agencies review all submissions, however some agencies may choose to redact, or withhold, certain submissions (or portions thereof) such as those containing private or proprietary information, inappropriate language, or duplicate/near duplicate examples of a mass-mail campaign. This can result in discrepancies between this count and those displayed when conducting searches on the Public Submission document type. For specific information about an agency's public submission policy, refer to its website or the Federal Register document.



For related information, [Open Docket Folder](#)

1 Your Information

Information entered will be viewable on Regulations.gov

1 Your Information

2 Your Preview

3 Your Receipt

Agency Posting Guidelines: Comments will be posted to www.regulations.gov and made available for in-person viewing at...
[More info](#)

[View Commenter's Checklist \(PDF\)](#) | [Alternate Ways to Comment](#)

Comment (Required)

5000 characters remaining

Upload file(s) (Optional)

Choose files

Drop files here

☐ I am submitting on behalf of a third party

Continue



Site Information Repository

- Oak Hill Branch of the Fayette County Library
611 Main Street, Oak Hill, WV 25901
(304) 469-9890

Hours: Monday, Wednesday, Friday; 10 a.m. – 5 p.m.
Tuesday, Thursday; 10 a.m. – 7 p.m.
Saturday; 10 a.m. – 2 p.m.

- Contains documents used to support the Hazard Ranking System (HRS) package and documents that will be generated during the remedial process

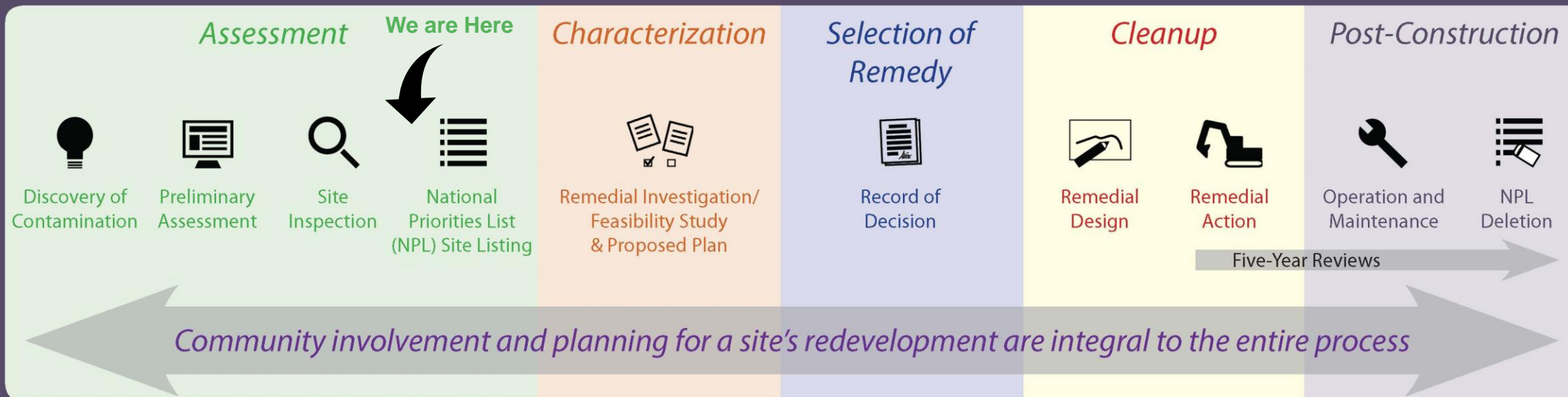


The Superfund Remedial Process

Stepan Nevshehirlian
Remedial Project Manager

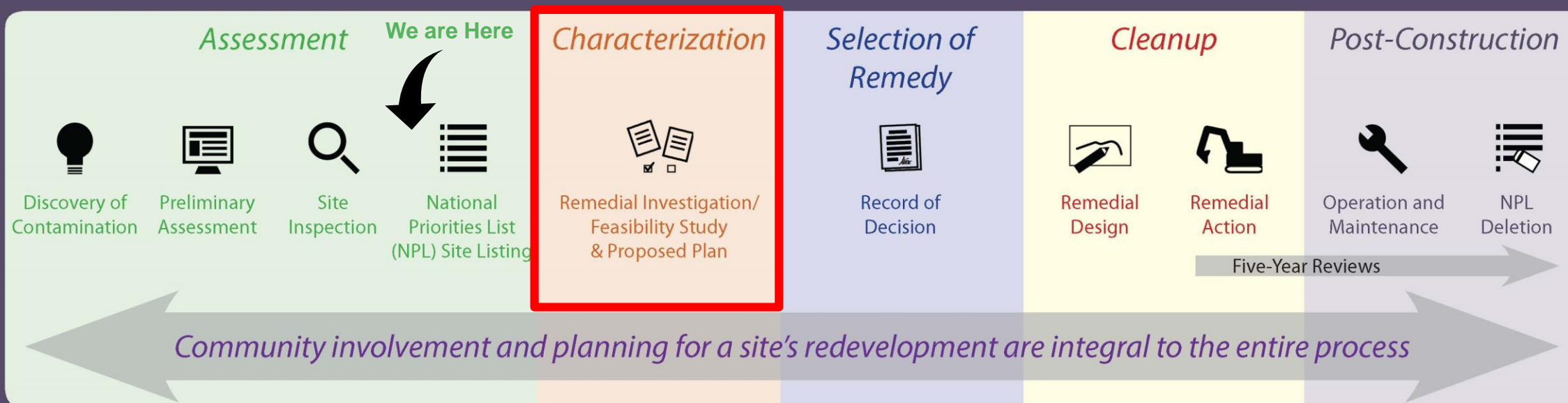


THE SUPERFUND REMEDIAL PROCESS



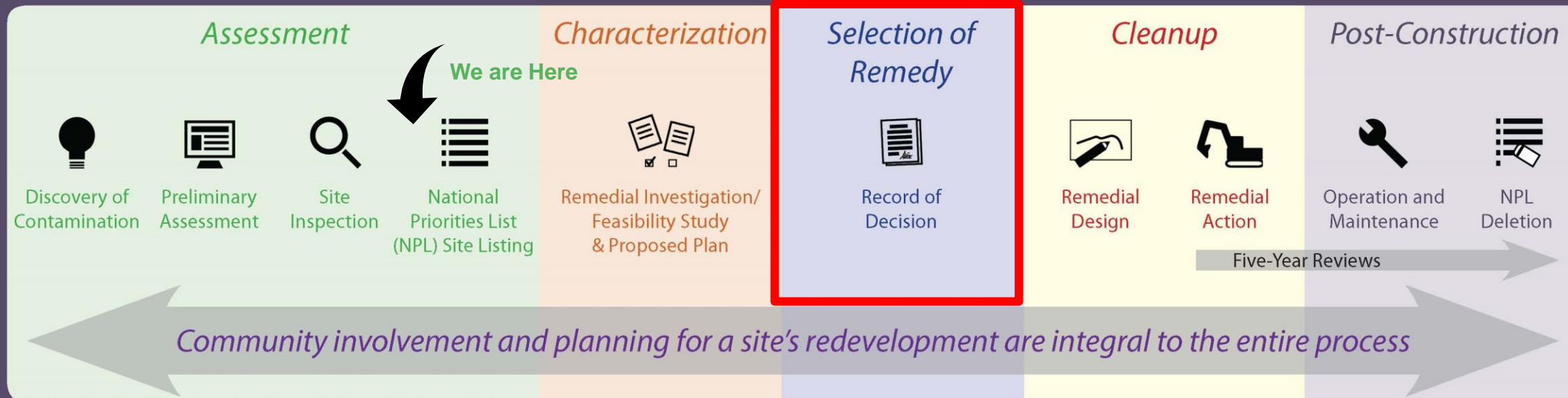


THE SUPERFUND REMEDIAL PROCESS



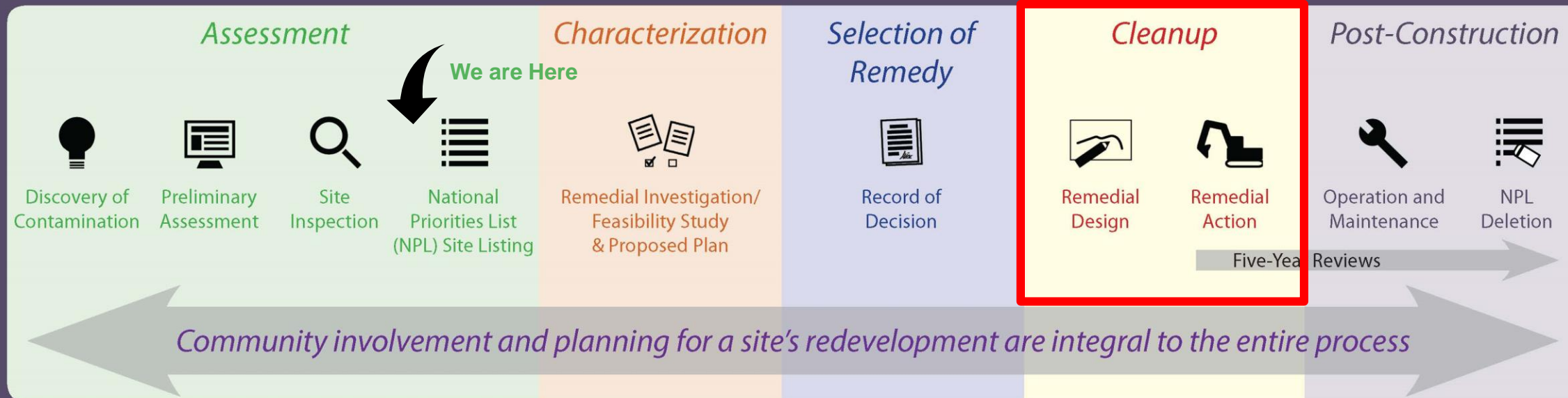


THE SUPERFUND REMEDIAL PROCESS



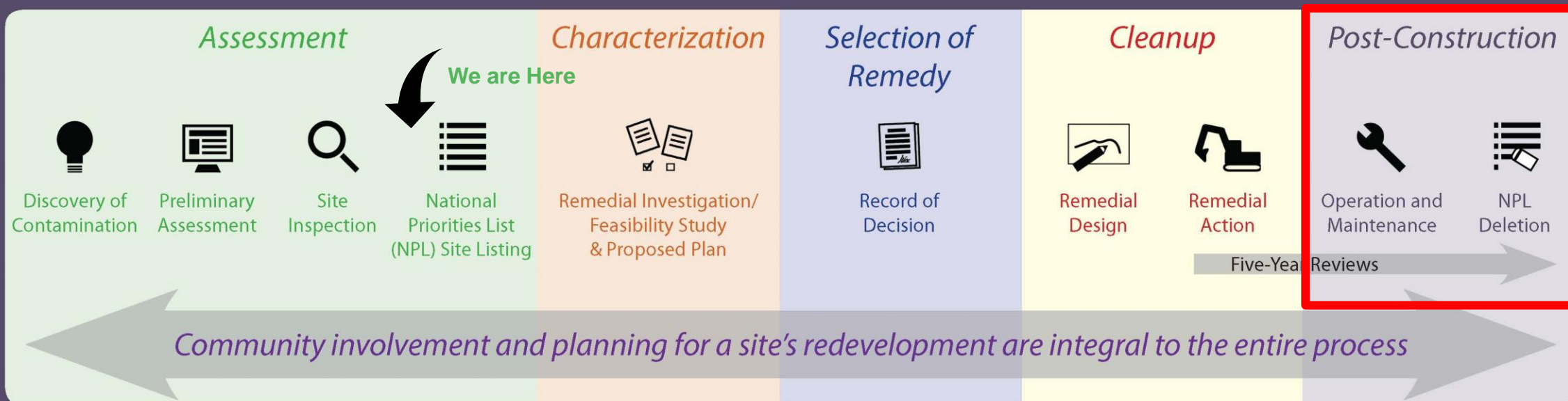


THE SUPERFUND REMEDIAL PROCESS





THE SUPERFUND REMEDIAL PROCESS





Next Steps: Characterization

- How is this work different?
 - Site Assessment vs Remedial Investigation
- Remedial Investigation
 - Groundwater and other media
 - PCBs and other compounds
 - Surface and “at depth” samples
 - Detailed Risk Assessment
- Feasibility Study
 - Conducted if Risk Assessment shows cleanup is needed
 - Evaluates cleanup options
- Health Study
 - ATSDR (Agency for Toxic Substances and Disease Registry)

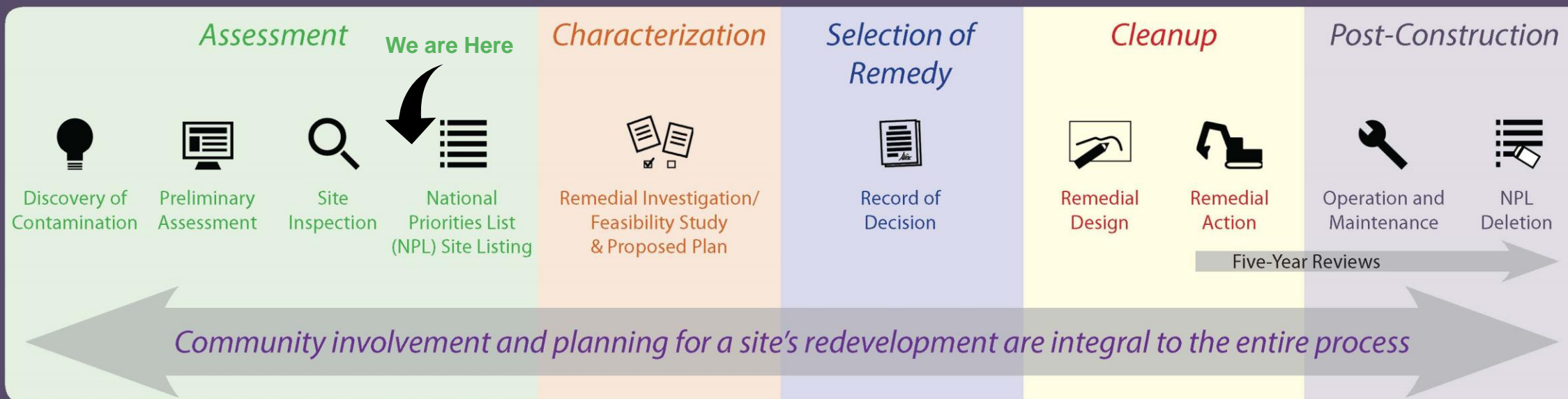
Characterization



Remedial Investigation/
Feasibility Study
& Proposed Plan



THE SUPERFUND REMEDIAL PROCESS





Community Resources

- Community Involvement Plan (CIP)
- Technical Assistance Services for Communities (TASC)
- Community Advisory Group (CAG)
- Technical Assistance Grants (TAG)



Community Resources

- Site Profile Page: www.epa.gov/superfund/shaffer
- Site Information Repository:
 - Oak Hill Branch of the Fayette County Library
 - 611 Main Street
 - Oak Hill, WV 25901
 - (304) 469-9890



Community Resources

- Public Comment period is open until **November 13, 2018**
- Comment online in the Federal Register: www.regulations.gov
 - Search for: "EPA-HQ-OLEM-2018-0586"
- Comment by mail:

U.S. Environmental Protection Agency
EPA Superfund Docket Center
Mailcode 28221T
1200 Pennsylvania Avenue NW
Washington, D.C. 20460



Contact us:

Community Involvement
Coordinator:

Cathleen Kennedy

(215) 814-2746

kennedy.cathleen@epa.gov

Remedial Project Manager:

Stepan Nevshehirlian

(215) 814-3402

nevshehirlian.stepan@epa.gov