



U.S. Environmental Protection Agency Region 3

Spectron, Inc. Superfund Site

Elkton, Maryland

Cleanup Progress and Community Update September 2007

PRP Group to Fund and Perform Cleanup

In January 2007, the EPA entered into an agreement with several companies, considered under Superfund law to be Potentially Responsible Parties (PRPs). EPA refers to the cooperating companies, jointly, as the PRP Group. Under the terms of the agreement, the PRP Group will perform and fund the remediation of the entire Spectron, Inc. Superfund Site (the Site). The Site is located at Providence Road and Little Elk Creek near Elkton, Maryland. EPA estimates the cost of the cleanup to be approximately \$19.5 million. An additional \$1.8 million will be paid to EPA for past cleanup costs, and over \$500,000 has been paid to state and federal agencies to restore aquatic habitat and resources.



OU1 Cleanup Action Started

The U.S. Environmental Protection Agency (EPA) has started cleanup activities for Operable Unit 1 (OU1). OU1 is addressing the soil and shallow groundwater in the "Plant Area" of the Site. The Plant Area is located on the southwest bank of the creek and consists of the main operating and disposal areas of the former facility.

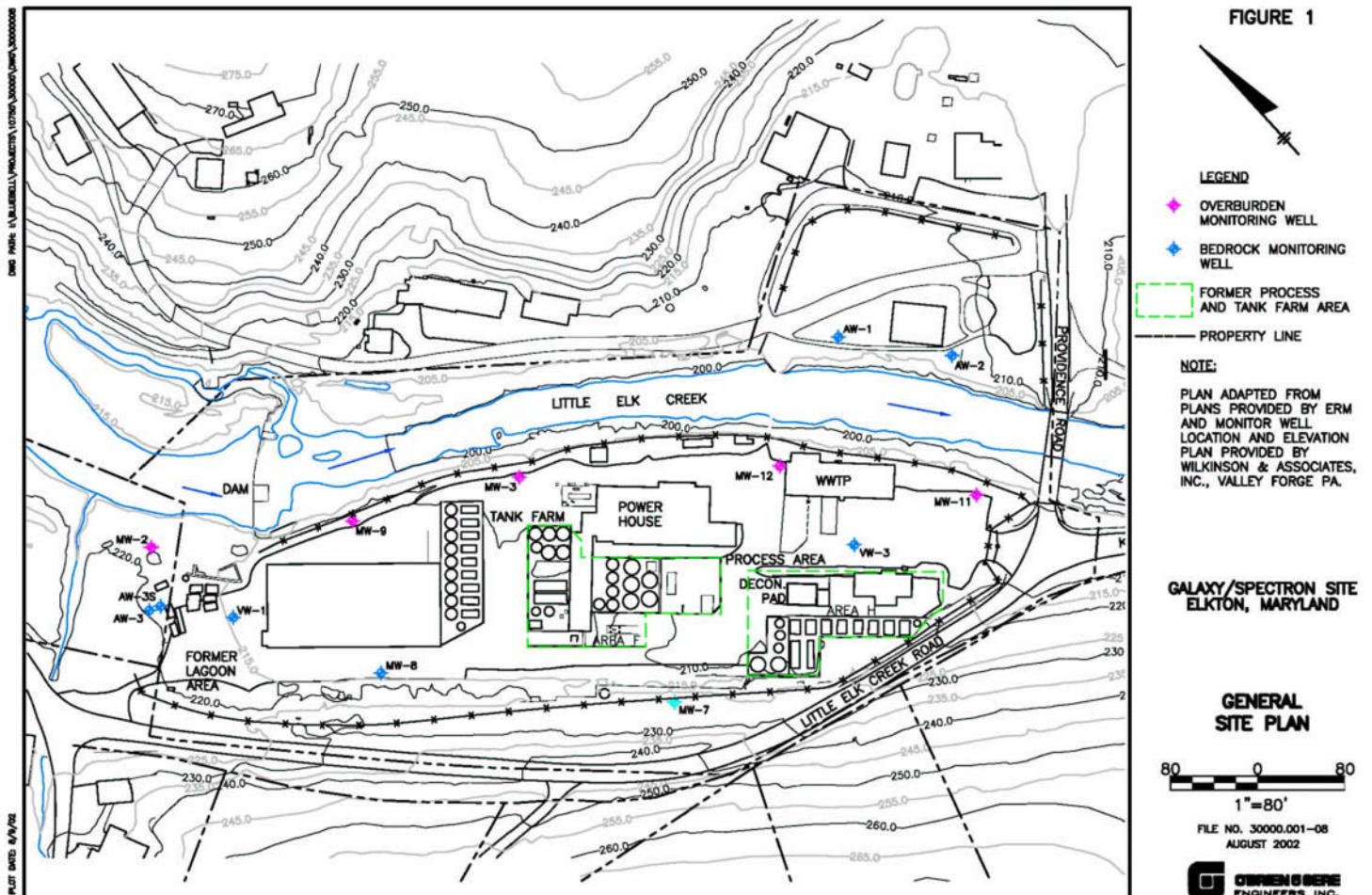
In September 2004, EPA signed a Record of Decision (ROD) for OU1. The ROD is a public document that selected which cleanup alternative will be used at the Site, and Remedial Actions are the construction or implementation of the selected alternatives. OU1 is the first of two Remedial Actions that will occur at the Site.

The major components required by the 2004 ROD are:

- Continued operation and maintenance of the groundwater treatment system, including the stream liner;
- Demolition of the other existing structures;
- Consolidation and grading of contaminated soils;
- Installation of a plastic cap to prevent direct contact with contaminated soil and shallow groundwater;
- Treatment of residual contaminants within the soil and shallow groundwater;
- Institutional methods, such as deed restrictions, to prevent use of the groundwater;
- Monitoring to ensure that the remedy is protective of human health and the environment.

Field Activities

Field work for OU1 began on August 9, 2007. Using a process known as a Membrane Interface Probe (MIP) investigation, workers are sampling to determine the presence of site-related chemicals in the groundwater. The investigation will also show the distribution of Volatile Organic Compounds (VOCs) in saturated soil and groundwater in the study area. During September and October, workers will clean the stream liner system to ensure that it continues to operate efficiently. In addition, data for the Operable Unit 2 (OU2) Remedial Investigation were collected from the area of the former facility office (northeast of the creek) at the end of August.



OU2 Progress

The investigation of the second phase of site remediation, Operable Unit 2 (OU2), is ongoing. OU2 will address groundwater in the bedrock aquifer and clean up a narrow strip of land, which is located across the creek, east of the Plant Area. The PRP Group recently installed and tested the new monitoring wells which will help to determine the nature and extent of groundwater contamination in the bedrock. However, EPA and the Maryland Department of the Environment (MDE) determined that there were data gaps regarding the bedrock groundwater and additional well locations were proposed to ensure that the groundwater data for the OU2 Remedial Investigation (RI) are complete.

When the RI results are available, they will be used to prepare a Feasibility Study (FS). The FS will analyze available engineering technologies and determine which ones can be effective remedial alternatives for the Site. EPA will review the FS and identify which remedial alternative (remedy) the Agency prefers for OU2. EPA will then issue a Proposed Plan, which will describe the preferred remedy (or remedies) for OU2. The Proposed Plan will be made available for public comment before the final remedy is selected.

For Additional Information

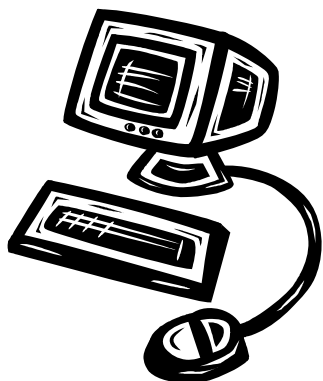
For additional information about this Site, please contact an EPA Representative:

Carrie Deitzel

Community Involvement Coordinator
215-814-5525
1-800-553-2509
deitzel.carrie@epa.gov

Rashmi Mathur

Remedial Project Manager
215-814-5234
mathur.rashmi@epa.gov



Site related documents are available for review at the following locations:

⇒ **Cecil County Library**

301 Newark Avenue
Elkton, Maryland 21921

⇒ **U.S. EPA Region 3**

Public Reading Room
1650 Arch Street
Philadelphia, PA 19103

Please call Anna Butch at 215-814-3157 to schedule an appointment.

You can also visit the Site website for additional information:

<http://www.epa.gov/reg3hwmd/super/sites/MDD000218008/index.htm>

Select the “Administrative Record” link to view Site related documents.
To view the ROD or the Proposed Plan, scroll to those selections.



U.S. Environmental Protection Agency Region 3
Attn: Carrie Deitzel
1650 Arch Street (3HS52)
Philadelphia, PA 19103

