



Safety Light Corporation Superfund Site

Columbia County, Pennsylvania

Demolition Work Completed



U.S. Environmental Protection Agency, Region 3

July 2009

The U.S. Environmental Protection Agency (EPA) is continuing its cleanup effort at the Safety Light Corp. (SLC) Superfund Site, located in South Centre Township, Pennsylvania. This fact sheet provides an update on the demolition work completed onsite.

Demolition Work Completed

The seven Safety Light buildings scheduled to be demolished because of poor structural conditions, have been torn down and the related debris removed for proper disposal.

EPA removed approximately 2,300 tons of building materials and debris, which was transported off site to a licensed and/or permitted facility for disposal. Work included:

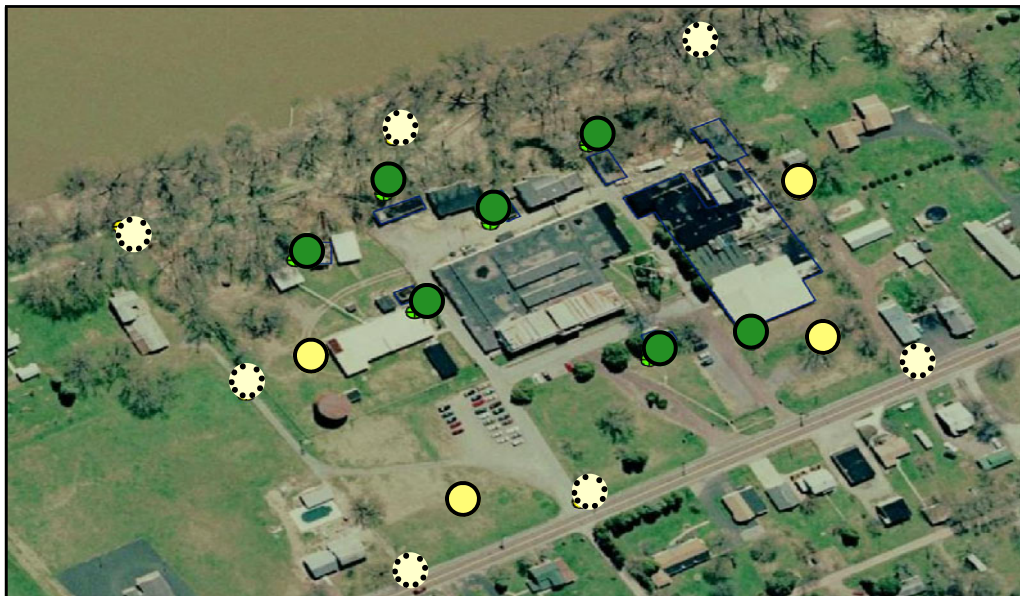
- Review and Approval of Health and Safety plans prior to work starting
- Review and Approval of Demolition plans prior to work starting
- Building Demolition, that included:
 - Dust Suppression (water and/or foam)
 - Air Monitoring
- Radioactivity Screenings (screening debris with hand-held instruments)
- Categorizing debris for disposal
- Off-site Disposal.

Air Monitoring Data

Both U.S. Army Corps of Engineers (USACE) contractors and the Pennsylvania Department of Environmental Protection (PADEP) conducted air monitoring during the demolition project to test for radioactivity. (See map below for locations.) As an added precautionary measure, PADEP included an air monitor on the Central Columbia School property, which is located about one mile north of the site.

Monitoring results show no elevated levels of radioactive dust particles in air samples during the demolition work, and dosimeter (radiation detection devices) findings were consistent with natural background levels.

Samples were continuously collected and tested using an on-site lab. To confirm these results, monthly composite samples were sent to an off-site lab for separate analysis. The additional results confirmed that levels of radioactive dust were well below the criteria established by EPA and PADEP that is protective of human health and the environment.



Approximate locations of air monitors during the demolition project.

- USACE Air Monitors
- PADEP Air Monitors
- PADEP Dosimeters (radiation detection devices)

Not shown:

One air monitor located approximately one mile north on the Central Columbia School campus.

Location markers not to scale

“Before” photo courtesy of Press Enterprise circa 2004
Circled buildings were designated for demolition project.



“After” photo taken June 2009. Dotted circles show where buildings used to stand.
An additional structure behind the main building was also removed.

More “After” photos available on EPA’s website:
www.epa.gov/reg3hwmd/super/sites/PAD987295276/index.htm

Next Steps

- ♦ U.S. Army of Corps of Engineers (USACE) contractors will return to the Site in late summer to remove:
 - a cement foundation slab of one of the demolished buildings (area can be seen in the “After” photo marked with a plastic covering),
 - additional remaining demolition debris and,
 - stored drums of wastes previously staged and awaiting transportation for off-site disposal.
- ♦ The comprehensive studies, called the Remedial Investigation and Feasibility Study (RI/FS), for the rest of the Safety Light structures (OU-1), are nearly complete.

- ♦ EPA is currently evaluating those documents and expects to issue a proposed cleanup plan for the remaining Safety Light structures during the winter of 2009 / 2010.

- ♦ Also, the complete set of data from soil, groundwater, sediment and surface water sampling is nearly complete.

EPA’s contractors are currently assembling the comprehensive environmental data for EPA’s review and analysis. Once reviewed, EPA will use the information to draft proposed cleanup plans for OU-2 and OU-3 (see Site Background).

This fact sheet, the demolition project completion report, air monitoring data logs, and other Site-related documents, will be available for review on EPA’s website, at
www.epa.gov/reg3hwmd/super/sites/PAD987295276/index.htm

Site Background

The SLC Site is located in South Centre Township, PA, situated between the Susquehanna River and Old Berwick Road.

The Site is approximately 10 acres and is bordered mostly by residential properties and the Susquehanna River.

Operations closed in December 2007. Past activities at the Site include the manufacturing of:

- Self-illuminated watches and instrument dials,
- Smoke detectors,
- Neutron sources,
- Exit signs, and
- Other products containing radioactive materials (such as radium-226, strontium-90, cesium-137, and tritium).



EPA’s Removal program (short-term cleanups) unearthed, categorized and packaged about 4,800 cubic feet of wastes, including drums and other containers of historical radioactive wastes. EPA removed the drums for off-site storage and disposal at licensed and/or permitted facilities.

EPA’s Remedial program (long-term cleanups) is cleaning up the Site in three separate pieces, called “operable units.”

- OU-1 = remaining buildings and structures,
- OU-2 = contaminated onsite groundwater, and
- OU-3 = contaminated onsite soils/sediments/surface water.

For More Information

This fact sheet and other Site-related documents are available online for review at:

- www.epa.gov/reg3hwmd/super/sites/PAD987295276/index.htm
- www.epa.gov/arweb



Or, to review a paper copy, please visit:

The Bloomsburg Area Public Library, 225 Market Street, Bloomsburg, PA 17815

If you have additional questions about the Site, please contact one of the representatives listed below:

Trish Taylor

EPA Community Involvement Coordinator
(215) 814-5539
taylor.trish@epa.gov

Mitch Cron

EPA Remedial Project Manager
(215) 814-3286
cron.mitch@epa.gov

Jeff Whitehead

Pennsylvania DEP
Radiation Health Physicist
(717) 787-2964
jewwhitehea@state.pa.us

